

S9892

Simplicity



A



B

Designed and printed in USA.



A

Average

MISSES' JEANS

Suggested Fabrics: Chambray, Chino, Cotton Blends, Denim, Linen Blends, Poplin, Twill.
Lining: Cotton Blends, Polyester Blends. **Interfacing:** Lightweight Fusible.

Notions: A,B: ¼" (1.5cm) buttons (jeans buttons optional): five for A, one for B. Also for B: One 7" (18cm) zipper (cut to fit).

Sizes	8	10	12	14	16	18	20	22	24	26
European	34	36	38	40	42	44	46	48	50	52

BODY MEASUREMENTS: Select pattern size based on body measurements

Bust	31½	32½	34	36	38	40	42	44	46	48	Ins.
Waist	24	25	26½	28	30	32	34	37	39	41½	"
Hip-9" below waist	33½	34½	36	38	40	42	44	46	48	50	"
Back-neck to waist	15¾	16	16¼	16½	16¾	17	17¼	17½	17¾	17¾	"

Lining A,B	45***	- ½ yd.										
Interfacing A,B	20"	1	1	1	1½	1½	1½	1¾	1¾	1¾	1¾	Yds.

Jeans A (sit 1" below waist)												
45**	2%	2½	2½	2½	2%	2%	3	3	3	3½	Yds.	
60**	2%	2½	2¾	2¾	2¾	2¾	2½	2½	2½	2½	"	

Jeans B (sit 1" below waist)												
45**	1½	1%	1¾	2%	2%	2%	2%	2%	2%	2½	Yds.	
60**	1%	1%	1%	1%	1%	1%	1½	1½	1%	1¾	"	

Contrast (Side Front and Back, Yoke Front and Back, Waistband)												
45**	1%	1%	1%	1½	1½	1½	1½	1½	1½	1½	Yds.	
60**	1%	1%	1%	1%	1%	1%	1¾	1¾	1%	1%	"	

FINISHED GARMENT MEASUREMENTS (Includes Design and Wearing Ease)

A,B Hip	33½	34½	36	38	40	42	44	46	48	50	Ins.
Width, each leg											
Pants A,B	19½	20	20½	21	21½	22	22½	23	23½	24	Ins.
Finished side length from waist											
Pants A,B	41¾	42	42¼	42½	42¾	43	43¼	43½	43¾	44	Ins.

*with nap **without nap

Moins Facile

JEANS POUR JEUNES FEMMES

Tissus Conseillés: Chambray, Chino, Cotonnades, Denim, Toile de lin mélangé, Popeline, Twill. **Doubleur:** Cotonnades, Tissus mélangés de polyester. **Entoilage:** thermocollant léger.

Mercerie: A, B : boutons de 1.5cm (boutons en jean facultatifs) : 5 pour A, 1 pour B. Aussi pour B : 1 fermeture à glissière de 18cm (à couper).

Tailles	8	10	12	14	16	18	20	22	24	26
Françaises	36	38	40	42	44	46	48	50	52	54
Européen	34	36	38	40	42	44	46	48	50	52

MESURES DU CORPS: Choisissez la taille du patron basée sur les mesures du corps

Poitrine	80	83	87	92	97	102	107	112	117	122	cm
Taille	61	64	67	71	76	81	87	94	99	106	"
Hanches (23cm au-dessous de la taille)	85	88	92	97	102	107	112	117	122	127	cm
Dos du cou à la taille	40	40.5	41.5	42	42.5	43	44	44	44.5	44.5	"

Doubleur A,B	115cm**	- 0.3m.										
Entoilage A,B	51cm	0.9	0.9	0.9	1.0	1.0	1.0	1.1	1.1	1.1	1.3	m

Pantalon A (Repose à 2.5cm au-dessous de la taille)												
115cm*	2.2	2.3	2.3	2.3	2.4	2.4	2.6	2.7	2.7	2.9	m	
150cm*	1.9	1.9	1.9	2.1	2.1	2.1	2.3	2.3	2.3	2.3	"	

Pantalon B (Repose à 2.5cm au-dessous de la taille)												
115cm*	1.4	1.5	1.6	1.9	2.2	2.2	2.2	2.2	2.2	2.3	m	
150cm*	1.1	1.1	1.1	1.3	1.3	1.3	1.4	1.4	1.5	1.6	"	

Contraste (Côté devant et dos, Empiècement devant et dos, Ceinture)												
115cm*	1.0	1.0	1.0	1.3	1.4	1.4	1.4	1.4	1.4	1.4	m	
150cm*	1.0	1.0	1.0	1.0	1.0	1.0	1.1	1.1	1.3	1.3	"	

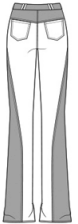
MESURES DES VÊTEMENTS FINI (Motif et aisance de port compris)

A,B Hanches	85	88	91	97	102	107	112	117	122	127	cm
Largeur, chaque jambe											
Pantalon A,B	50	51	52	53	55	56	57	58	60	61	cm
Longueur finie – côté, taille à l'ourlet											
Pantalon A,B	106	107	107	108	109	109	110	110	111	112	cm

*avec sens **sans sens



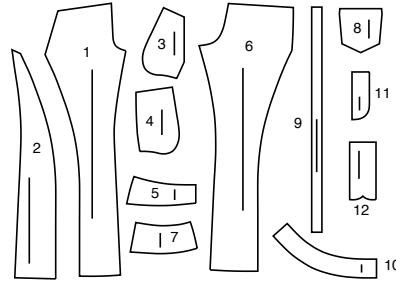
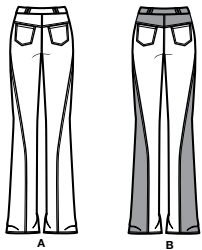
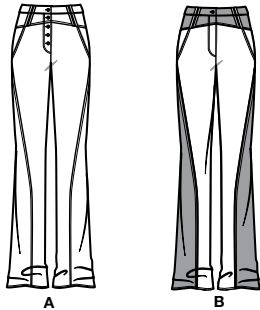
A



B

Simplicity®

Thank you for purchasing this Simplicity pattern. We made every effort to provide you with a high quality product.



- 1 Front-A,B
- 2 Side Front and Side Back-A,B
- 3 Pocket Facing-A,B
- 4 Side Front and Pocket-A,B
- 5 Yoke Front-A,B
- 6 Back-A,B
- 7 Yoke Back-A,B
- 8 Back Pocket-A,B
- 9 Carrier-A,B
- 10 Waistband-A,B
- 11 Fly Facing-A,B
- 12 Underlap-A,B

General Directions

The Pattern

- SYMBOLS**
- GRAIN LINE Place on straight grain of fabric parallel to selvage
 - PLACE SOLID LINE on fold of fabric.
 - CENTER FRONT OR BACK of garment.
 - NOTCHES
 - DOTS
 - CUTTING LINE
 - LENGTHEN OR SHORTEN LINES

SEAM ALLOWANCE: 5/8" (1.5cm) unless otherwise stated is included but not printed on MULTI-SIZE PATTERNS. Mark your size with colored felt tip pen. See chart on tissue for how to use MULTI-SIZE PATTERNS.

ADJUST IF NEEDED
Make adjustments before placing pattern on fabric.

TO LENGTHEN:
Cut pattern between lengthen or shorten lines. Spread pattern evenly, the amount needed and tape to paper.

TO SHORTEN:
At lengthen or shorten lines, make an even pleat taking up amount needed. Tape in place.

When lengthen or shorten lines are not given, make adjustments at lower edge of pattern.

Cutting/Marking

BEFORE CUTTING:
PRESS pattern pieces with a warm dry iron. PRE-SHRINK fabric by pre-washing washables or steam-pressing non-washables.

CIRCLE your cutting layout.

PIN pattern to fabric as shown in Cutting Layouts.

• FOR DOUBLE THICKNESS: Fold fabric with RIGHT sides together.

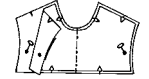
• FOR SINGLE THICKNESS: Place fabric RIGHT side up.

• FOR PILE, SHADED OR ONE WAY DESIGN FABRICS: Use "with nap" layouts

AFTER CUTTING:
Transfer markings to WRONG side of fabric before removing pattern. Use pin and chalk method or dressmaker's tracing paper and wheel.

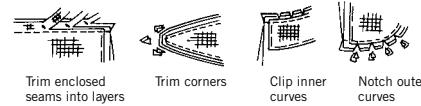
To Quick Mark:

- Snip edge of fabric to mark notches, ends of fold lines and center lines.
- Pin mark dots.



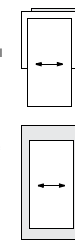
Sewing

- SEW garment following **Sewing Directions**.
- PIN or machine-baste seams matching notches.
- STITCH 5/8" (1.5 cm) seams unless otherwise stated.
- PRESS seams open unless otherwise indicated clipping when necessary so seams will lie flat.
- TRIM seams to reduce bulk, as shown below.

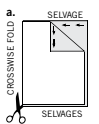


SPECIAL CUTTING NOTES

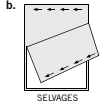
★ If layout shows a piece extending past fold, cut out all pieces except piece that extends.



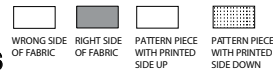
✱ Mark small arrows along both selvages indicating direction of nap or design. Fold fabric crosswise with RIGHT sides together, and cut along fold (a).



Turn one fabric layer around so arrows on both layers go in the same direction. Place RIGHT sides together (b).



Cutting Layouts

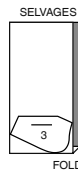


POSITION OF PATTERN PIECES MAY VARY SLIGHTLY ACCORDING TO YOUR PATTERN SIZE

LINING A,B

USE PIECE 3

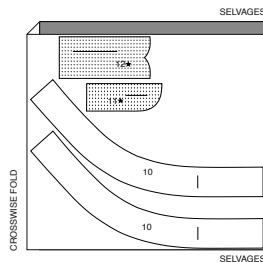
45" (115CM)
ALL SIZES



INTERFACING A,B

USE PIECES 10 11 12

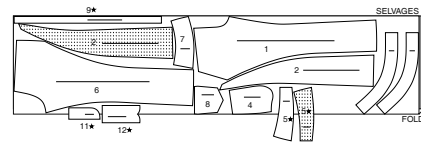
20" (51CM)
ALL SIZES



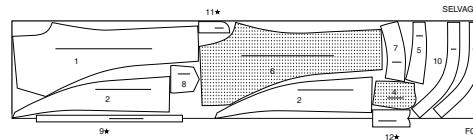
JEANS A

USE PIECES 1 2 4 5 6 7 8 9 10 11 12

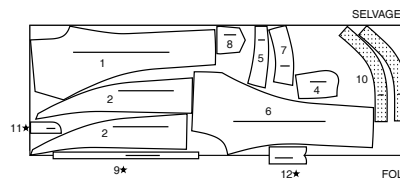
45" (115CM)
SIZES 8 10 12 14 16 18



45" (115CM)
SIZES 20 22 24 26



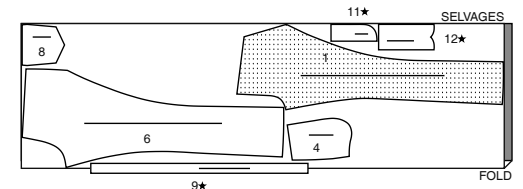
60" (150CM)
ALL SIZES



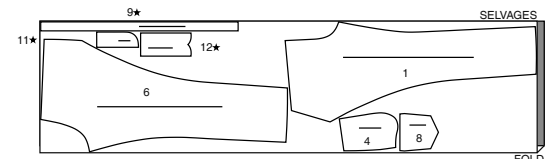
JEANS B

USE PIECES 1 4 6 8 9 11 12

45" (115CM)
SIZES 8 10 12 14

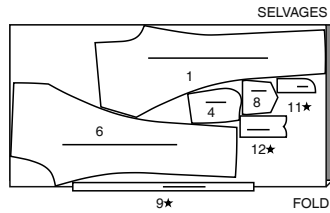


45" (115CM)
SIZES 16 18 20 22 24 26



CUTTING LAYOUTS CONTINUED ON PAGE 2

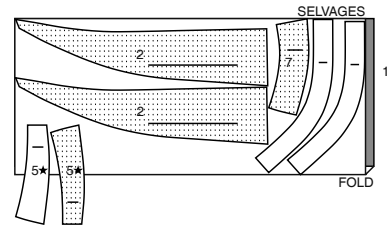
60" (150CM)
ALL SIZES



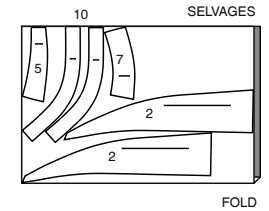
CONTRAST (WAISTBAND, FT AND BK YOKE, SIDE FRONT AND SIDE BACK)

USE PIECES 2 5 7 10

45" (115CM)
ALL SIZES



60" (150CM)
ALL SIZES



SEWING TUTORIALS



Build your skills viewing short, easy-to-follow videos at [simplicity.com/sewingtutorials](https://www.simplicity.com/sewingtutorials)

Sewing Directions



Read **General Directions** on page 1 before you begin.

Sewing methods in **BOLD TYPE** have Sewing Tutorial Video available. Scan QR CODE to watch videos:

EDGE-STITCH - Stitch close to finished edge or seam.

FINISH - Stitch 1/4" (6mm) from raw edge and finish with one of the following: (1) Pink OR (2) Overcast OR (3) Turn in along stitching and stitch close to fold OR (4) Overlock.

OPTIONAL FOR HEMS: Apply Seam Binding.

INTERFACING- Pin interfacing to WRONG side of fabric. Fuse interfacing in place following manufacturer's directions.

REINFORCE - Stitch along seamline where indicated in sewing instructions, using small machine stitches.

SLIP-STITCH - Slide needle through a folded edge, then pick up a thread of underneath fabric.

STAY-STITCH - 1/4" (6mm) from seam line within seam allowance in direction of arrows. This stitching stays in permanently to prevent stretching on curved edges. (Shown only in the first illustration).

TOP-STITCH - On outside, stitch 1/4" (6mm) from edge, seam or previous stitching, using presser foot as guide, or stitch where indicated in instructions.

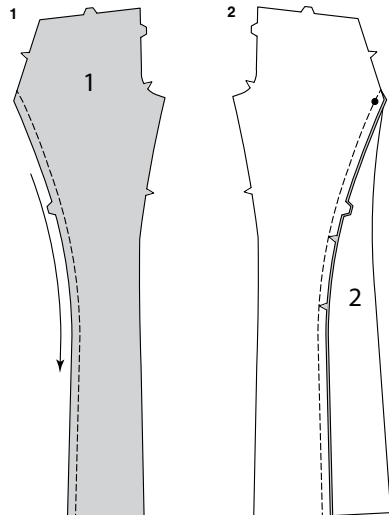
UNDERSTITCH - Open out facing or underside of garment; stitch to seam allowance close to seam.

PATTERN PIECES WILL BE IDENTIFIED BY NUMBERS THE FIRST TIME THEY ARE USED.

STITCH SEAMS WITH RIGHT SIDES TOGETHER UNLESS OTHERWISE STATED.

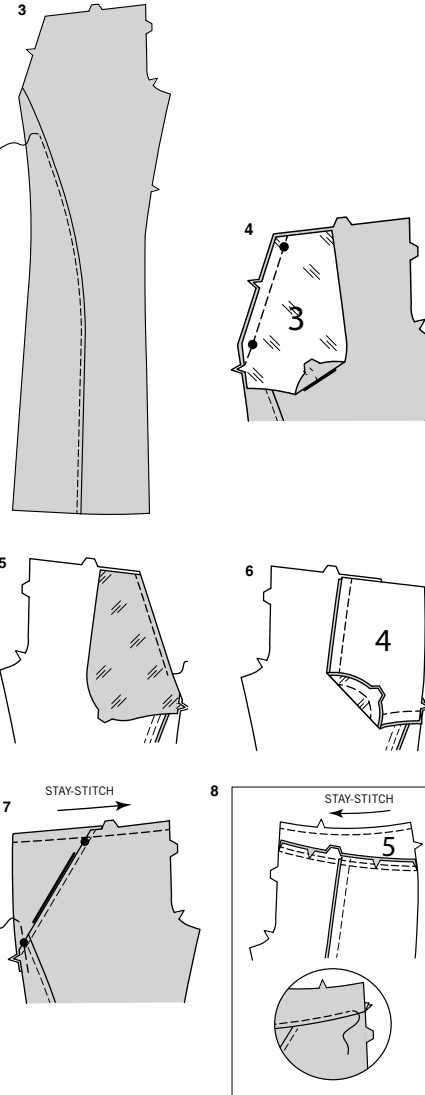
PANTS A, B

NOTE: *View A will be shown unless otherwise indicated.
Finished pants designed to be worn 1" (2.5cm) below waist.*



1. STAY-STITCH side edges of front (1) in direction of arrows.

2. With **RIGHT** sides together, stitch side front and side back (2) to front matching notches and large dots. Clip to stay-stitching if necessary. Baste. Stitch. Press seam toward side front.



3. On **OUTSIDE, TOP-STITCH** side front.

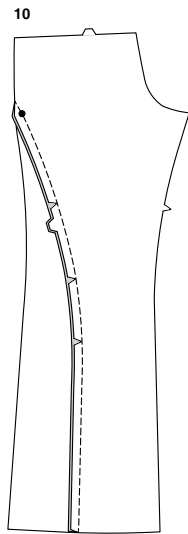
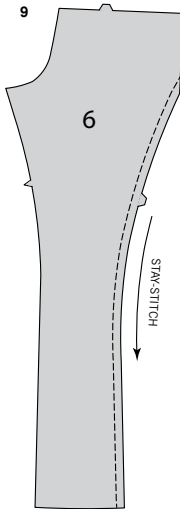
4. With **RIGHT** sides together and raw edges even, pin pocket facing (3) to front, matching large dots. Stitch single notched edge. Trim seam.

5. Turn pocket to **INSIDE**; press. On **OUTSIDE, TOP-STITCH** finished edge.

6. On **INSIDE**, with **RIGHT** sides together, pin side front and pocket (4) section to pocket facing, having raw edges even. Stitch double notched edge, as shown.

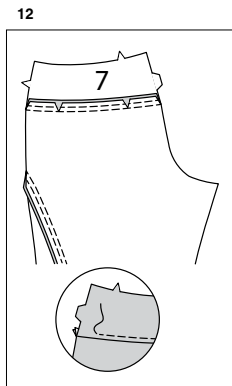
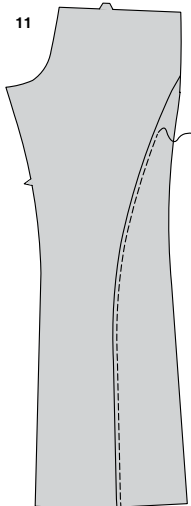
7. On **OUTSIDE**, lap garment front over front and pocket section, matching large dots, having raw edges even; pin. Baste side and upper edges together. **STAY-STITCH** upper edge of front in direction of arrows.

8. With **RIGHT** sides together, pin yoke front (5) to upper edge of front, matching notches, clipping to stay-stitching if necessary. Stitch. Press seam up. On **OUTSIDE, TOP-STITCH** yoke front. **STAY-STITCH** upper edge of yoke front.



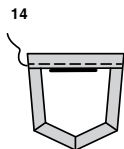
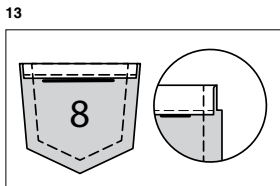
9. **STAY-STITCH** side edges of back (6) in direction of arrows.

10. With **RIGHT** sides together, stitch side front and side back (2) sections to side edges of back, matching notches and large dots. Clip to stay-stitching if necessary. Baste. Stitch. Press seam toward side.



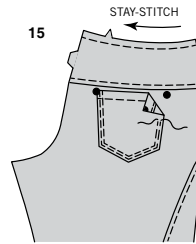
11. On **OUTSIDE**, **TOP-STITCH** side back.

12. With **RIGHT** sides together, pin yoke back (7) to upper edge of back, matching notches, clipping to stay-stitching if necessary. Stitch. Press seam up.
On **OUTSIDE**, **TOP-STITCH** yoke back.

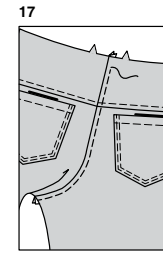
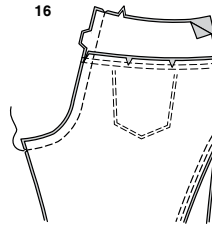


13. **FINISH** upper edge of back pocket (8). Turn upper edge to **OUTSIDE** along fold line, forming facing. Stitch along seam line on raw edges. Trim seam allowance in the facing area to 1/4" (6mm).

14. Turn corners **RIGHT** side out, turning facing to the **WRONG** side; press, pressing under raw edges along stitching. Stitch facing close to inner edge.

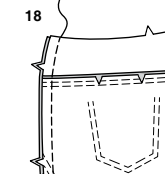


15. On **OUTSIDE**, pin pocket to back matching large dots. **EDGE-STITCH** and **TOP-STITCH** side edges of pocket. **STAY-STITCH** upper edges of yoke back in direction of arrows.

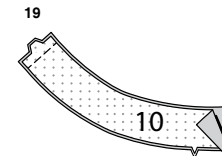


16. With **RIGHT** sides together, stitch center seam of back sections. Press seam toward right back.

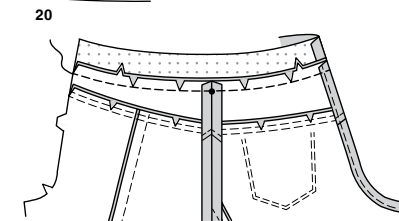
17. On **OUTSIDE**, **TOP-STITCH** **RIGHT** back.



18. With **RIGHT** sides together, stitch front to back at side seams.

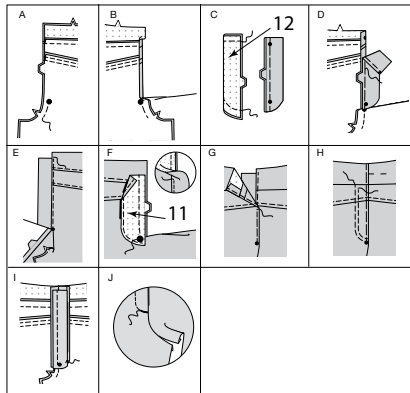


19. Apply **INTERFACING** to **WRONG** side of waistband (10) sections, following manufacturer's directions. With **RIGHT** sides together, stitch center back seam of waistband sections.



20. With **RIGHT** sides together, pin waistband to upper edge of pants matching notches, placing small dots at side seam. Clip to stay-stitching if necessary. Baste. Stitch. Press seam up.

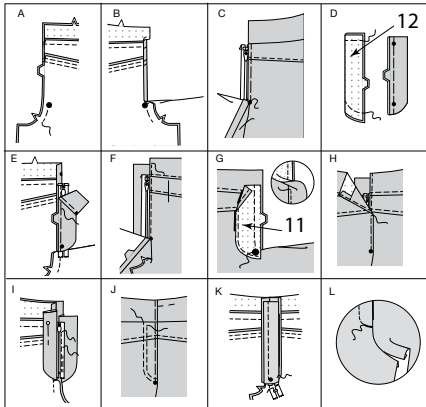
21



BUTTON FLY A

- 21.A-** Stitch front sections together at center front between large dot and notch.
B- Turn in left front opening edge along foldline; press.
C- Apply **INTERFACING** to underlap (12). With right sides together, fold underlap in half having raw edges even. Stitch upper and lower edge. Trim. Turn. Press. Baste raw edges.
D- On **INSIDE**, pin underlap to left front opening edge, matching notches and small dots, having raw edges even. Baste.
E- On **OUTSIDE**, stitch close to pressed edge of front through all layers.
F- Apply **INTERFACING** to fly facing (11). **FINISH** outer edge of fly facing. Pin fly facing to right front opening edge, matching notches and large dots. Stitch, ending at large dot. Trim. **UNDERSTITCH** fly facing. Turn facing to inside.
G- Lap **RIGHT** front over **LEFT**, matching centers. Baste close to edge through all thicknesses.
H- Turn facing down. On outside, stitch right front along stitching lines, keeping underlap free.
I- Turn underlap back in place. On inside, hand tack underlap and facing together at lower edge, as shown.
J- If desired, on outside, machine-stitch a bar tack across lower end of fly through all thicknesses.

22

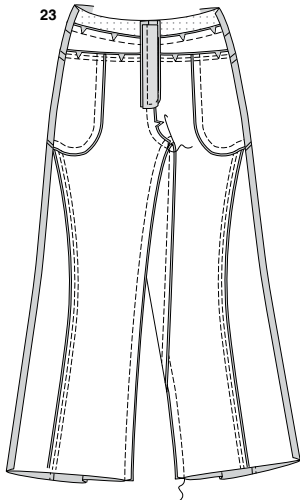


ZIPPER FLY B

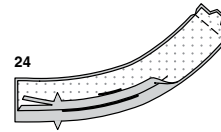
- 22.A-** Stitch front sections together at center front between large dot and notch.
B- Turn in left front opening edge along foldline; press.
C- Place closed zipper (face up) under left front opening edge, having pressed edge close to zipper teeth and zipper stop at waistband seam. Turn under upper edge of zipper tape even with seam. Using a zipper foot, baste close to pressed edge.
D- Apply **INTERFACING** to underlap (12). With **RIGHT** sides together, fold underlap in half having raw edges even. Stitch upper and lower edge. Trim. Turn. Press. Baste raw edges.
E- On **INSIDE**, pin underlap to left front opening edge (over zipper), matching notches and small dots, having raw edges even. Baste along previous basting for zipper.
F- On **OUTSIDE**, using a zipper foot, stitch close to pressed edge of front through all layers.
G- Apply **INTERFACING** to fly facing (11). **FINISH** outer edge of fly facing. Pin fly facing to right front opening edge, matching notches and large dots. Stitch, ending at large dot. Trim. **UNDERSTITCH** fly facing. Turn facing to inside.
H- Lap **RIGHT** front over **LEFT**, matching centers. Baste close to edge through all thicknesses.
I- Pin underlap out of the way. Open out fly facing. Pin remaining zipper tape to fly facing, keeping right front free. Using a zipper foot, stitch in place close to zipper teeth and along center of zipper tape.
J- Turn facing down. On outside, stitch right front along stitching lines, keeping underlap free.
K- Turn underlap back in place. On inside, hand tack underlap and facing together at lower edge, as shown. Trim away excess zipper tape even with lower edge of fly, if needed.
L- If desired, on outside, machine-stitch a bar tack across lower end of fly through all thicknesses.

CONTINUE AS FOLLOWS FOR BOTH VIEWS

- 23.** Stitch remainder of center front seam.
 Stitch front to back at entire inner leg seam.

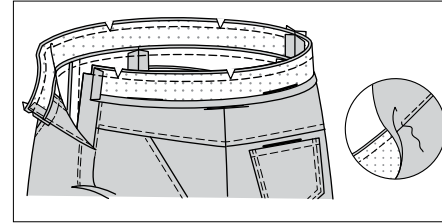


24



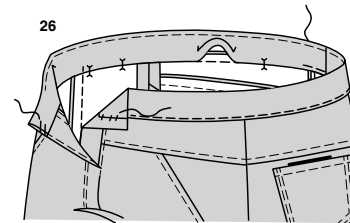
- 24.** Apply **INTERFACING** to **WRONG** side of waistband facing sections. Stitch center back seam. Press under 1/2" (1.3cm) on lower edge of waistband facing. Trim to 1/4" (6mm).

25



- 25.** Press under seam allowance on front edge of waistband facing. With **RIGHT** sides together, pin waistband to upper edge of pants matching notches and center back seam. Stitch. Trim seam. Clip curves **UNDERSTITCH** facing.

26



- 26.** Turn facing to **INSIDE**, pinning pressed edge of facing over seam, placing pins on **OUTSIDE**. On **OUTSIDE**, stitch in the ditch or **GROOVE** of seam, catching in pressed edge on **INSIDE**. **SLIP-STITCH** front edges of facing.

FINISHING

27



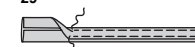
- 27.** Fold carrier (9) in half, lengthwise with **WRONG** sides together. Press, setting in a crease.

28



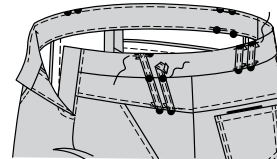
- 28.** Open out long edges of carrier and turn them to **WRONG** side so that they meet at the crease. Press.

29

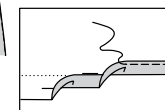


- 29.** Fold carrier in half lengthwise, bringing pressed edges together. Stitch close to both long edges.

30



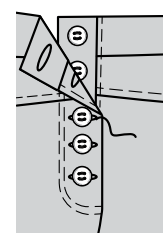
31



- 30.** For front, cut four carriers the measurement between large dots on lower yoke seam to upper waistband seam plus 1/2" (1.3cm) for back, cut four carriers each the measurements between dots on upper and lower waist band seam plus 1/2" (1.3cm). Turn under ends of each carrier. On **OUTSIDE**, pin carriers to waistband and yoke, centering ends at outer large dots. **EDGE-STITCH** ends in place. Stitch along center of carriers in the groove of upper yoke seam between large dots on front.

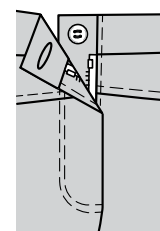
- 31.** Press up hem on lower edge of pants. Mark depth of hem; trim evenly. To form narrow hem, tuck under raw edge to meet crease. Press. Stitch hem in place.

32



- 32.VIEW A-** Make buttonholes in **RIGHT** front fly at markings. Sew buttons to underlap at markings.

33



- 33.VIEW B-** Make buttonholes in **RIGHT** front waistband at markings. Sew button to underlap at markings.



Congrats!

You've completed your sewing adventure

**SHARE
YOUR** LOOK



Post your pattern and tag us
@simplicity_creative_group and **#simplicitypatterns**
for a chance to be featured on our social media.

Look for more PDF patterns at [simplicity.com](https://www.simplicity.com)

Have a question or need help with your sewing project call us at
1-888-588-2700



Simplicity ©2023 a division of IG Design Group Americas Inc. • Atlanta, GA 30342 USA www.thedesigngroup.com • All Rights Reserved. www.simplicity.com • Made in the U.S.A. Fabriqué aux États-Unis.

To be used for individual private home use only and not for commercial or manufacturing purposes. • A usage privé seulement et non à des fins commerciales ou de production en série. • Para uso privado solamente, no se puede utilizar con propósitos de comercialización o de producción en serie.