

S9891

Simplicity®



A



B



C



Designed and printed in USA.



C

Average

## MISSES' SKIRT IN THREE LENGTHS

**Suggested Fabrics:** Denim, Nylons, Poplin, Rayon, Sateen, Tencel, Twill. **Interfacing:** Lightweight Fusible.

**Notions:** A,B,C: Three ¾" (2.2cm) D-Rings, 1½ yds. (1.6m) of elastic cording, pair of ½" (1.3cm) grommets, one cord stopper, pair of ¾" (1.5cm) buttons or heavy-duty snaps (optional). **Also for B,C:** ¾ yd. (0.7m) of ¾" (1cm) elastic.

Sizes	6	8	10	12	14	16	18	20	22	24
European	32	34	36	38	40	42	44	46	48	50

## BODY MEASUREMENTS: Select pattern size based on body measurements

Bust	30½	31½	32½	34	36	38	40	42	44	46	Ins.
Waist	23	24	25	26½	28	30	32	34	37	39	"
Hip-9" below waist	32½	33½	34½	36	38	40	42	44	46	48	"
Back-neck to waist	15½	15¾	16	16¼	16½	16¾	17	17¼	17½	17¾	"

## Skirt A (sits 1½" below waist)

45**	1¾	1¾	1¾	1¾	1¾	1¾	1¾	1¾	1¾	1¾	Yds.
60**	1	1	1	1	1	1	1	1	1	1	"

## Interfacing 20" - ¼ yd.

## Skirt B (sits 1½" below waist)

45**	2	2	2	2	2	2	2	2	2	2	Yds.
60**	1½	1½	1½	1½	1½	1½	1½	1½	1½	1½	"

## Interfacing B,C 20" - ¾ yd.

## Skirt C (sits 1½" below waist)

45**	2¾	2¾	2¾	2¾	2¾	2¾	2¾	2¾	2¾	2¾	Yds.
60**	1¾	1¾	1¾	1¾	1¾	1¾	1¾	1¾	1¾	1¾	"

## FINISHED GARMENT MEASUREMENTS (Includes Design and Wearing Ease)

A,B,C Hip	36	37	38	39½	41½	43½	45½	47½	49½	51½	Ins.
Width, lower edge											
Skirt A	38	39	40	41½	43½	45½	47½	49½	51½	53½	Ins.
Skirt B	40½	41½	42½	44½	46½	48½	50½	52½	54½	56½	"
Skirt C	44	45	46	47½	49½	51½	53½	55½	57½	59½	"
Finished back length from waist											
Skirt A	16	16	16	16	16	16	16	16	16	16	Ins.
Skirt B	26½	26½	26½	26½	26½	26½	26½	26½	26½	26½	"
Skirt C	39½	39½	39½	39½	39½	39½	39½	39½	39½	39½	"

\*with nap \*\*without nap

Moins Facile

## JUPE EN TROIS LONGUEURS POUR JEUNES FEMMES

**Tissus Conseillés:** Denim, Nylons, Popeline, Rayonne, Satin, Tissu Tencel, Twill. **Entoilage:** thermocollant léger.

**Mercerie:** A,B,C : 3 anneaux D de 2.2cm, 1.6m de cordon élastique, 1 paire d'œillets de 1.3cm, 1 arrêt cordon, 1 paire de boutons ou de boutons-pression résistants de 1.5cm (facultatif). **Aussi pour B,C :** 0.7m d'élastique de 1cm.

Tailles	6	8	10	12	14	16	18	20	22	24
Françaises	34	36	38	40	42	44	46	48	50	52
Européen	32	34	36	38	40	42	44	46	48	50

## MESURES DU CORPS: Choisissez la taille du patron basée sur les mesures du corps

Poitrine	78	80	83	87	92	97	102	107	112	117	cm
Taille	58	61	64	67	71	76	81	87	94	99	"
Hanches (23cm au-dessous de la taille)											
Dos du cou à la taille	83	85	88	92	97	102	107	112	117	122	cm
Jupe A (repose à 2.5cm au-dessous de la taille)	39.5	40	40.5	41.5	42	42.5	43	44	44	44.5	"

## Jupe A (repose à 2.5cm au-dessous de la taille)

115cm*	1.1	1.1	1.1	1.1	1.1	1.1	1.1	1.1	1.1	1.1	m
150cm*	0.9	0.9	0.9	0.9	0.9	0.9	0.9	0.9	0.9	0.9	"

## Entoilage 51cm - 0.2m

## Jupe B (repose à 2.5cm au-dessous de la taille)

115cm*	1.8	1.8	1.8	1.8	1.8	1.8	1.8	1.8	1.8	1.8	m
150cm*	1.4	1.4	1.4	1.4	1.4	1.4	1.4	1.4	1.4	1.4	"

## Entoilage B,C 51cm - 0.3m

## Jupe C (repose à 2.5cm au-dessous de la taille)

115cm*	2.2	2.2	2.2	2.2	2.4	2.4	2.4	2.4	2.4	2.4	m
150cm*	1.7	1.7	1.7	1.7	1.7	1.7	1.7	1.8	2.2	2.2	"

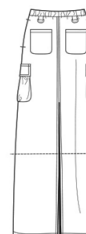
## MESURES DES VÊTEMENTS FINI (Motif et aisance de port compris)

A,B,C Hanches	91	94	97	100	105	110	116	121	126	131	cm
Largeur à l'ourlet											
Jupe A	97	99	102	105	110	116	121	126	131	136	cm
Jupe B	104	106	109	112	117	123	128	133	138	143	"
Jupe C	112	114	117	121	126	131	136	141	146	151	"
Longueur finie - dos, taille à l'ourlet											
Jupe A	41	41	41	41	41	41	41	41	41	41	cm
Jupe B	67	67	67	67	67	67	67	67	67	67	"
Jupe C	100	100	100	100	100	100	100	100	100	100	"

\*avec sens \*\*sans sens



A

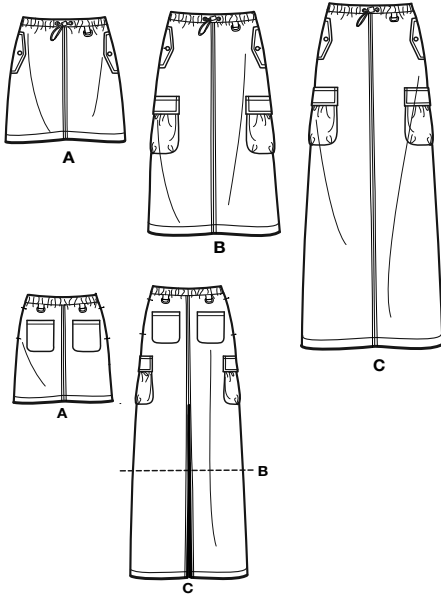


B

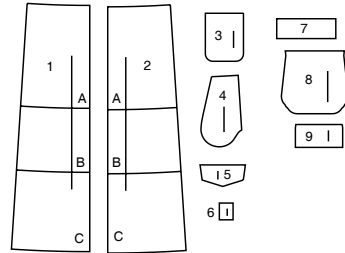
C

# Simplicity®

Thank you for purchasing this Simplicity pattern.  
We made every effort to provide you with a high quality product.



- 1 Front-A,B,C
- 2 Back-A,B,C
- 3 Back Pocket-A,B,C
- 4 Upper Pocket-A,B,C
- 5 Upper Flap-A,B,C
- 6 Tab-A,B,C
- 7 Casing-A,B,C
- 8 Lower Pocket-B,C
- 9 Lower Flap-B,C



www.simplicity.com



info@simplicity.com



1-888-588-2700

## General Directions

### The Pattern

- SYMBOLS**
- ↔ GRAIN LINE Place on straight grain of fabric parallel to selvage
  - ↓ PLACE SOLID LINE on fold of fabric.
  - CENTER FRONT OR BACK of garment.
  - ▽ NOTCHES
  - DOTS
  - CUTTING LINE
  - == LENGTHEN OR SHORTEN LINES

SEAM ALLOWANCE: 5/8" (1.5cm) unless otherwise stated is included but not printed on MULTI-SIZE PATTERNS. Mark your size with colored felt tip pen. See chart on tissue for how to use MULTI-SIZE PATTERNS.

**ADJUST IF NEEDED**  
Make adjustments before placing pattern on fabric.

**TO LENGTHEN:**  
Cut pattern between lengthen or shorten lines. Spread pattern evenly, the amount needed and tape to paper.

**TO SHORTEN:**  
At lengthen or shorten lines, make an even pleat taking up amount needed. Tape in place.

When lengthen or shorten lines are not given, make adjustments at lower edge of pattern.

### Cutting/Marking

#### BEFORE CUTTING:

PRESS pattern pieces with a warm dry iron. PRE-SHRINK fabric by pre-washing washables or steam-pressing non-washables.

CIRCLE your cutting layout.

PIN pattern to fabric as shown in Cutting Layouts.

• FOR DOUBLE THICKNESS: Fold fabric with RIGHT sides together.

• FOR SINGLE THICKNESS: Place fabric RIGHT side up.

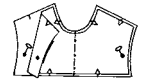
• FOR PILE, SHADED OR ONE WAY DESIGN FABRICS: Use "with nap" layouts

#### AFTER CUTTING:

Transfer markings to WRONG side of fabric before removing pattern. Use pin and chalk method or dressmaker's tracing paper and wheel.

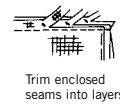
#### To Quick Mark:

- Snip edge of fabric to mark notches, ends of fold lines and center lines.
- Pin mark dots.

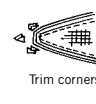


### Sewing

- SEW garment following **Sewing Directions**.
- PIN or machine-baste seams matching notches.
- STITCH 5/8" (1.5 cm) seams unless otherwise stated.
- PRESS seams open unless otherwise indicated clipping when necessary so seams will lie flat.
- TRIM seams to reduce bulk, as shown below.



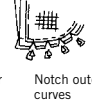
Trim enclosed seams into layers



Trim corners



Clip inner curves

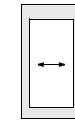
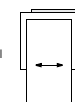


Notch outer curves

### SPECIAL CUTTING NOTES

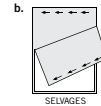
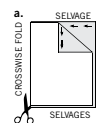
★ If layout shows a piece extending past fold, cut out all pieces except piece that extends.

Open out fabric to single thickness. Cut extending piece on RIGHT side of fabric in position shown.

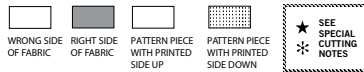


✱ Mark small arrows along both selvages indicating direction of nap or design. Fold fabric crosswise with RIGHT sides together, and cut along fold (a).

Turn one fabric layer around so arrows on both layers go in the same direction. Place RIGHT sides together (b).



## Cutting Layouts

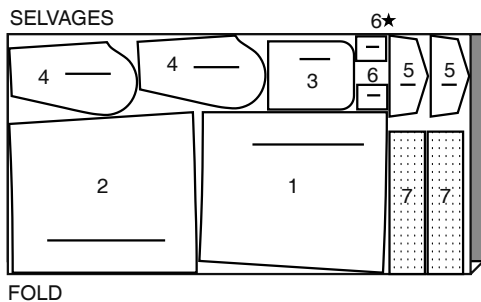


POSITION OF PATTERN PIECES MAY VARY SLIGHTLY ACCORDING TO YOUR PATTERN SIZE

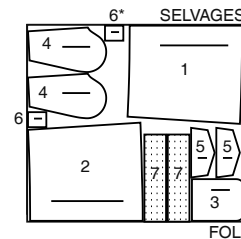
### SKIRT A

USE PIECES 1 2 3 4 5 6 7

45" (115CM) WITH NAP ALL SIZES



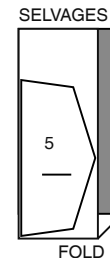
60" (150CM) WITH NAP ALL SIZES



### INTERFACING A

USE PIECE 5

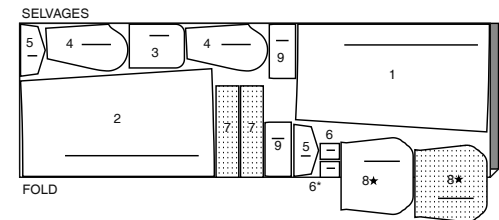
20" (51CM) ALL SIZES



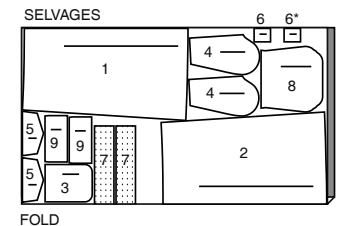
### SKIRT B

USE PIECES 1 2 3 4 5 6 7 8 9

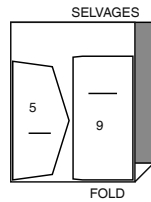
45" (115CM) WITH NAP ALL SIZES



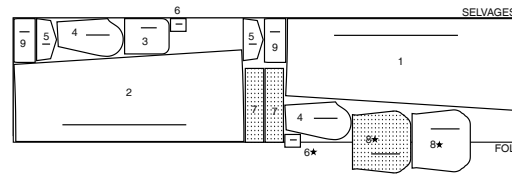
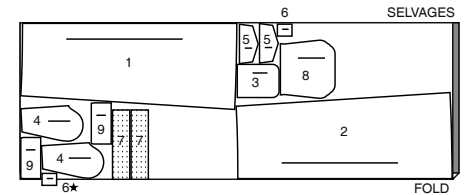
60" (150CM) WITH NAP ALL SIZES



CUTTING LAYOUTS CONTINUED ON PAGE 2

**INTERFACING B,C**  
USE PIECES 5 920" (51CM)  
ALL SIZES**SKIRT C**

USE PIECES: 1 2 3 4 5 6 7 8 9

45" (115CM)  
WITH NAP  
ALL SIZES60" (150CM)  
WITH NAP  
ALL SIZES

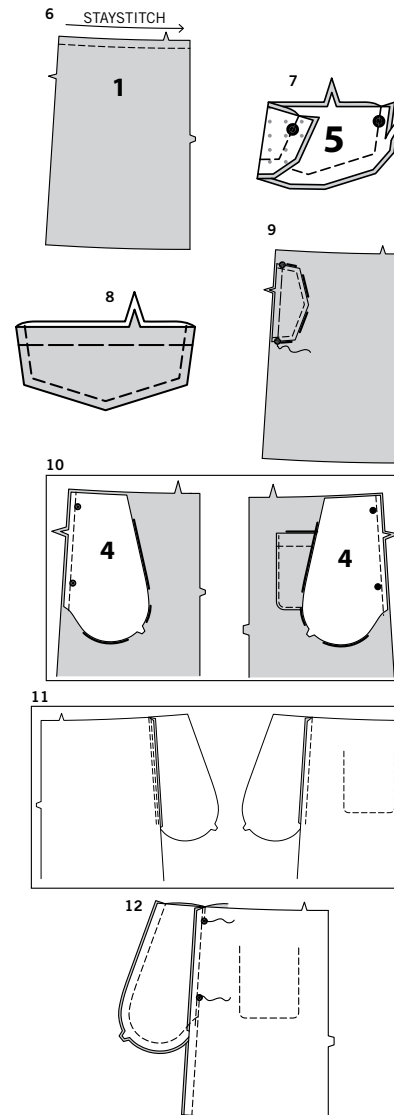
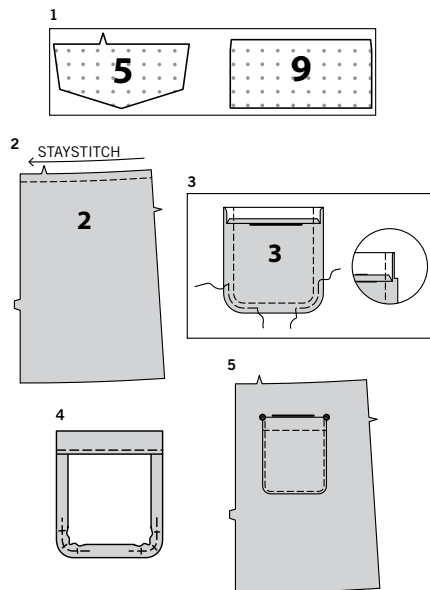
## SEWING TUTORIALS

Build your skills viewing short, easy-to-follow videos at  
[simplicity.com/sewingtutorials](https://www.simplicity.com/sewingtutorials)**Sewing Directions****FABRIC KEY**Read **General Directions** on page 1 before you begin.Sewing methods in **BOLD TYPE** have Sewing Tutorial Video available.  
Scan QR CODE to watch videos:**NARROW HEM** – see **Hems**: “sewing narrow hems” video.**STAYSTITCH** – see **Machine Stitches**: “how to stay stitching” video.**STITCH IN THE DITCH** – see **Machine Stitches**: “how to stitch in the ditch” video.**TOPSTITCH** – see **Machine Stitches**: “how to topstitch” video.**TRIM SEAM** – see **Seams**: “how to trim, clip and layer seams” video.**UNDERSTITCH** – see **Machine Stitches**: “how to understitch” video.**PATTERN PIECES WILL BE IDENTIFIED BY NUMBERS THE FIRST TIME THEY ARE USED.****STITCH 5/8" (1.5CM) SEAMS WITH RIGHT SIDES TOGETHER UNLESS OTHERWISE STATED.****SKIRT A, B, C****NOTE:** Finished skirt is designed to be worn 1-1/2" (3.8cm) below natural waist.**INTERFACING**

1. Pin interfacing to wrong side of UPPER FLAP (5) for All Views, and LOWER FLAP (9) for View B, C. Fuse in place following manufacturer's directions.

**BACK POCKETS**

2. **STAYSTITCH** upper edge of BACK (2) in the direction of the arrows.
3. Press under 1/4" (6mm) on upper edge of BACK POCKET (3). Turn upper edge to outside along fold line, forming facing. Stitch along seam line on raw edges. To ease curved edge of pocket, stitch 1/4" (6mm) inside the seam line, using a long machine-stitch. Trim seam allowance in the facing area to 1/4" (6mm).
4. Turn corners right side out, turning facing to the wrong side; press, pressing under raw edges along stitching. Pull up ease stitches to shape the curve. To eliminate bulk, notch out the fullness in the seam allowance along the curves as far as the ease stitches. Stitch facing close to inner edge.
5. On outside, pin pocket to back, matching large dots. Stitch close to side and lower edges.

**UPPER POCKETS**

6. **STAYSTITCH** upper edge of FRONT (1) in the direction of the arrows.
7. With right sides together, stitch facing to UPPER FLAP (5), leaving edge with large dots open. **TRIM SEAM.**

**NOTE:** Flaps have buttonholes, or optional snaps and will be addressed in **FINISHING**.

8. Turn flap; press. **TOPSTITCH** finished edge.

9. On outside, pin flap to front, matching large dots and notches. Baste in place 3/8" (1cm) from raw edge.

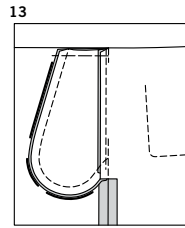
10. With right sides together, pin UPPER POCKET (4) to front (over flap) and back, matching large dots, having raw edges even. Stitch in 3/8" (1cm) seam.

11. **UNDERSTITCH** front pocket. Press seam toward pocket, pressing pocket out.

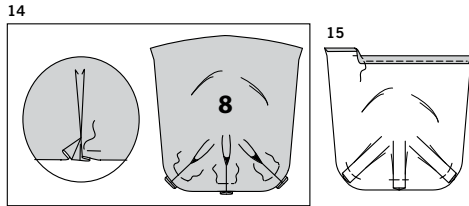
12. Pin front to back at side seams, matching large dots. Stitch side seams, leaving an opening between large dots. Stitch pocket edges together from side seam to upper edge.

**S9891**

3 of 4

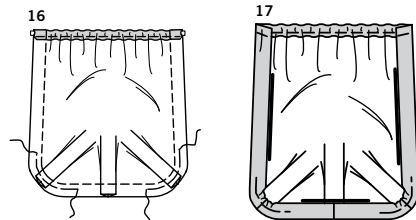


- 13.** Clip skirt back seam allowance below pocket. Press seam open below clip. Press pocket toward front. Baste upper edges together.

**LOWER POCKET B, C**

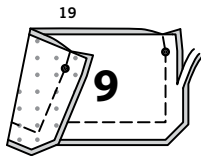
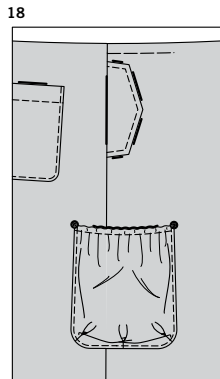
- 14.** To make pleats in lower edge of LOWER POCKET (8), on outside, fold along solid lines, bring fold to broken lines. Baste along seamline.

- 15.** Turn under upper edge of lower pocket to inside along foldline. Turn under raw edge 1/4" (6mm); press. Stitch close to inner pressed edge, forming casing.



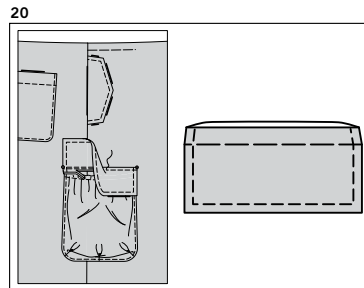
- 16.** Cut a piece of 3/8" (1cm) elastic, 7-1/4" (18.5cm) long. Attach a safety pin to one end. Thread elastic through casing. Stitch in place securely along seam line. Stitch along seamline on raw edges. To ease curved edge of pocket, stitch 1/4" (6mm) inside the seam line, using a long machine-stitch.

- 17.** Press under raw edges along stitching, pulling up ease stitches to shape the curve.

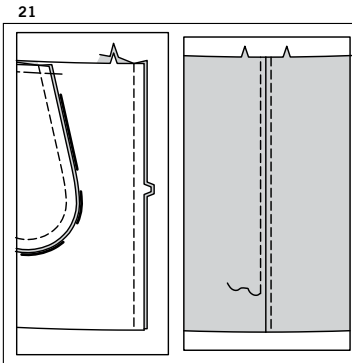


- 18.** On outside, pin lower pocket to front and back along pocket line, matching large dots. Stitch close to side and lower edges.

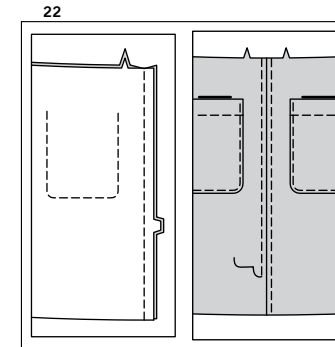
- 19.** With right sides together, stitch facing to LOWER FLAP (9), leaving edge with small dots open. **TRIM SEAM.**



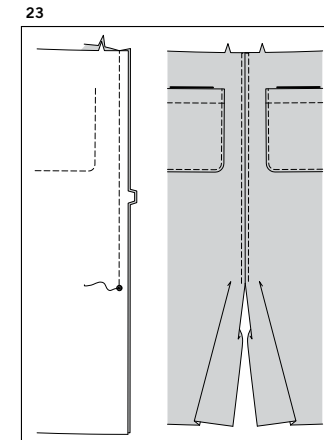
- 20.** Turn lower flap; press. Machine-baste 5/8" (1.5cm) from raw edge. On outside, **TOPSTITCH** close to finished edge. On outside, pin lower flap to front and back, placing basting along flap line, matching small dots, as shown. Stitch along basting. Trim close to stitching. Turn flap down; press. **TOPSTITCH** upper edge.

**CONTINUE AS FOLLOWS FOR ALL VIEWS**

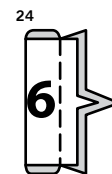
- 21.** With right sides together, stitch front sections together at center edges. On outside, **TOPSTITCH** along center seam.



- 22.** **FOR VIEW A** – With right sides together, stitch back sections together at center edges. **TOPSTITCH** along center seam.

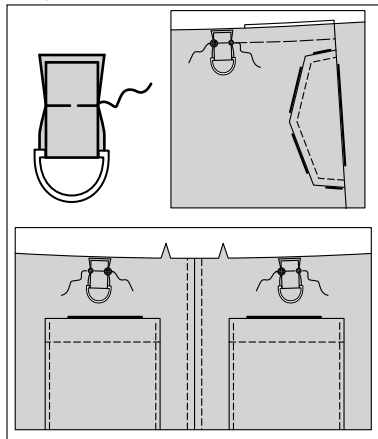


- 23.** **FOR VIEW B, C** – With right sides together, stitch back sections together at center edges from upper edge to large dot, back-stitching at dot to reinforce the seam. **TOPSTITCH** along center seam.



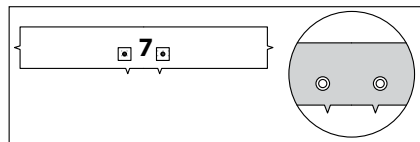
- 24.** **FOR ALL VIEWS** – To make three tabs, fold TAB (6) in half, bringing notches together. Stitch in a 3/8" (1cm) seam.

25



**25.** Turn tab; press. Thread tab through D-ring, bringing D-ring to center. Baste raw edges together. On outside, pin one tab to left side of front, and remaining tabs to back, matching large and small dots. Baste.

26



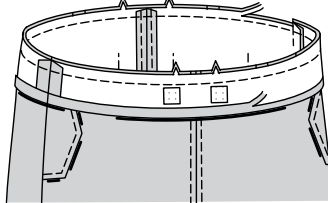
**26.** Cut two 1" (2.5cm) squares from a remnant of fusible interfacing. Fuse over small dots on CASING (7) front section. Apply grommets to casing at small dots, following manufacturer's directions.

27



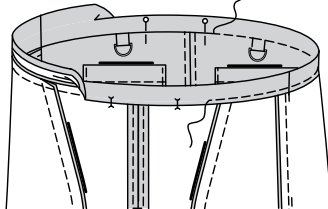
**27.** Stitch casing sections together at ends.

28



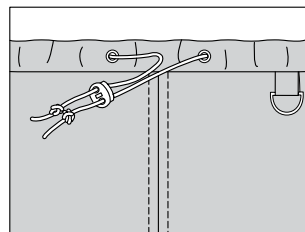
**28.** Press under 1/2" (1.3cm) on unnotched edge of casing. Trim to 1/4" (6mm). With right sides together, pin casing to skirt at upper edge, matching centers, seams, and notches. Stitch. **TRIM SEAM.** Press seam toward casing, pressing casing out.

29



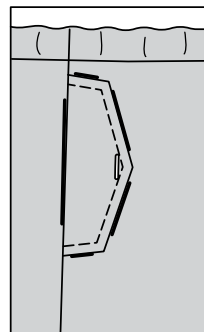
**29.** Turn pressed edge of casing to inside, just covering seam; pin, placing pins on outside. On outside, **STITCH IN THE DITCH.**

30

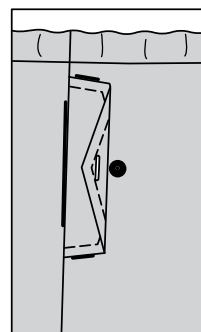


**30.** Thread 1/4" (6mm) wide elastic cord cording through grommets and bring ends to front evenly. Thread through a cord stopper. Trim cording if desired. Knot ends of cord.

31



32

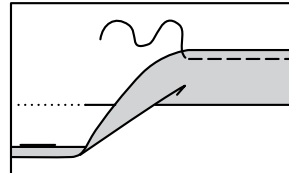


## FINISHING

**31.** Make buttonhole on upper flap at marking, or if you prefer, apply socket section of snap fastener at the small dot following manufacturer's directions.

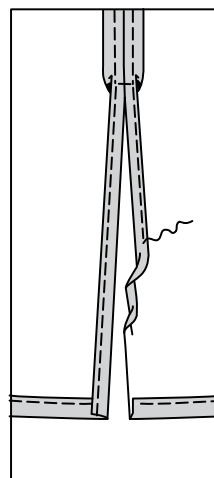
**32.** On outside, sew button to front under buttonhole, or if you prefer, apply knob section of snap fastener at small dot following manufacturer's directions.

33



**33.** Press up hem allowance. Press under 1/4" (6mm) on raw edge. Stitch close to inner pressed edge.

34



**34. FOR VIEW B, C –** Press under seam allowances on back slit. **NARROW HEM,** squaring stitching at opening end.



# Congrats!

You've completed your sewing adventure

---

## SHARE YOUR LOOK



Post your pattern and tag us  
**@simplicity\_creative\_group** and **#simplicitypatterns**  
for a chance to be featured on our social media.

Look for more PDF patterns at [simplicity.com](https://www.simplicity.com)

Have a question or need help with your sewing project call us at  
1-888-588-2700



Simplicity ©2023 a division of IG Design Group Americas Inc. • Atlanta, GA 30342 USA [www.thedesigngroup.com](https://www.thedesigngroup.com) • All Rights Reserved. [www.simplicity.com](https://www.simplicity.com) • Made in the U.S.A. Fabriqué aux États-Unis.

To be used for individual private home use only and not for commercial or manufacturing purposes. • A usage privé seulement et non à des fins commerciales ou de production en série. • Para uso privado solamente, no se puede utilizar con propósitos de comercialización o de producción en serie.