

S9889

Simplicity®



A



B



C



Designed and printed in USA.



A

Average

## MISSES' TOPS

**Suggested Fabrics:** Chambray, Linens, Rayons, Silky Types, Soft Cottons, Tencel.**Interfacing:** Lightweight Fusible.**Notions:** A,B: Three ½" (1.3cm) buttons. C: Nine ½" (1.3cm) buttons.

Sizes	4	6	8	10	12	14	16	18	20
European	30	32	34	36	38	40	42	44	46

## BODY MEASUREMENTS: Select pattern size based on body measurements

Bust	29½	30½	31½	32½	34	36	38	40	42	Ins.
Waist	22	23	24	25	26½	28	30	32	34	"
Hip-9" below waist	31½	32½	33½	34½	36	38	40	42	44	"
Back-neck to waist	15¼	15½	15¾	16	16¼	16½	16¾	17	17¼	"

## Interfacing A,B,C

	20" - ¾ yd.									
Top A	45**	1%	1%	1%	2	2	2	2	2½	2½ Yds.
	60**	1¼	1½	1¾	1½	1½	1½	1½	1½	"
Top B	45**	2%	2%	2%	2%	2%	2%	2%	2½	2½ Yds.
	60**	1½	1¾	1¾	1¾	1¾	1¾	1¾	1¾	"
Top C	45**	2½	2½	2½	2½	2½	2½	2½	2½	Yds.
	60**	1¾	1¾	1¾	1¾	2	2	2	2	"

## FINISHED GARMENT MEASUREMENTS (Includes Design and Wearing Ease)

A,B,C Bust	34	35	36	37	38½	40½	42½	44½	46½	Ins.
A,B,C Waist	35½	36½	37½	38½	40	42	44	46	48	"
B,C Hip	42	43	44	45	46½	48½	50½	52½	54½	"

## Finished back length from base of neck

Top A	22¼	22½	22¾	23	23¼	23½	23¾	24	24¼	Ins.
Top B,C	27¼	27½	27¾	28	28¼	28½	28¾	29	29¼	"

\*with nap \*\*without nap

Moins Facile

## HAUTS POUR JEUNES FEMMES

**Tissus Conseillés:** Chambray, Toiles de lin, Rayonnes, Sortes de soie, Coton souple, Tissu tencel. **Entoilage :** thermocollant léger.**Mercerie:** A, B : 3 boutons de 1.3cm. C : 9 boutons de 1.3cm.

Tailles	4	6	8	10	12	14	16	18	20
Françaises	32	34	36	38	40	42	44	46	48
Européen	30	32	34	36	38	40	42	44	46

## MESURES DU CORPS: Choisissez la taille du patron basée sur les mesures du corps

Poitrine	75	78	80	83	87	92	97	102	107	cm
Taille	56	58	61	64	67	71	76	81	87	"
Hanches (23cm au-dessous de la taille)	80	83	85	88	92	97	102	107	112	cm
Dos du cou à la taille	38.5	39.5	40	40.5	41.5	42	42.5	43	44	"

## Entoilage A,B,C

	51cm - 0.8m									
Haut A	115cm*	1.7	1.7	1.7	1.7	1.8	1.8	1.8	1.8	1.9 m
	150cm*	1.1	1.3	1.3	1.4	1.4	1.4	1.4	1.5	"
Haut B	115cm*	2.1	2.1	2.1	2.2	2.2	2.2	2.3	2.3	2.3 m
	150cm*	1.4	1.4	1.4	1.5	1.5	1.5	1.7	1.7	"
Haut C	115cm*	2.2	2.3	2.3	2.3	2.4	2.4	2.4	2.5	m
	150cm*	1.6	1.6	1.6	1.7	1.7	1.8	1.8	1.8	"

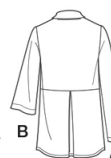
## MESURES DES VÊTEMENTS FINI (Motif et aisance de port compris)

A,B,C Poitrine	86	89	91	94	98	103	108	113	118	cm
A,B,C Taille	90	93	95	98	102	107	112	117	122	"
B,C Hanches	107	109	112	114	118	123	128	133	138	cm
Longueur finie – dos, votre nuque à l'ourlet										
Haut A	57	57	58	58	59	60	60	61	62	cm
Haut B,C	69	70	70	71	72	72	73	74	74	"

\*avec sens \*\*sans sens



A

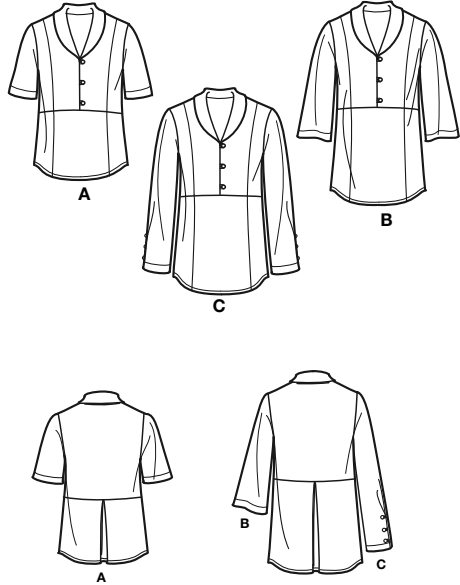


B

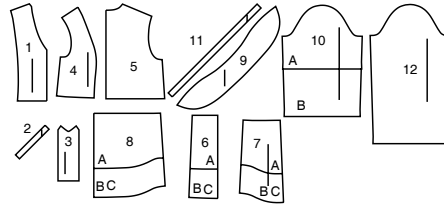
C

# Simplicity®

Thank you for purchasing this Simplicity pattern.  
We made every effort to provide you with a high quality product.



12 PIECES



- 1 Upper Front-A,B,C
- 2 Loops-A,B
- 3 Underlap-A,B,C
- 4 Upper Side Front-A,B,C
- 5 Upper Back-A,B,C
- 6 Lower Front-A,B,C
- 7 Lower Side Front-A,B,C
- 8 Lower Back-A,B,C
- 9 Collar-A,B,C
- 10 Sleeve-A,B
- 11 Loops-C
- 12 Sleeve-C



www.simplicity.com



info@simplicity.com



1-888-588-2700

## General Directions

### The Pattern

- SYMBOLS**
- ↔ GRAIN LINE Place on straight grain of fabric parallel to selvage
  - PLACE SOLID LINE on fold of fabric.
  - CENTER FRONT OR BACK of garment.
  - ▽ NOTCHES
  - DOTS
  - CUTTING LINE
  - == LENGTHEN OR SHORTEN LINES

SEAM ALLOWANCE: 5/8" (1.5cm) unless otherwise stated is included but not printed on MULTI-SIZE PATTERNS. Mark your size with colored felt tip pen. See chart on tissue for how to use MULTI-SIZE PATTERNS.

**ADJUST IF NEEDED**  
Make adjustments before placing pattern on fabric.

**TO LENGTHEN:**  
Cut pattern between lengthen or shorten lines. Spread pattern evenly, the amount needed and tape to paper.

**TO SHORTEN:**  
At lengthen or shorten lines, make an even pleat taking up amount needed. Tape in place.

When lengthen or shorten lines are not given, make adjustments at lower edge of pattern.

### Cutting/Marking

**BEFORE CUTTING:**  
PRESS pattern pieces with a warm dry iron. PRE-SHRINK fabric by pre-washing washables or steam-pressing non-washables.

CIRCLE your cutting layout.

PIN pattern to fabric as shown in Cutting Layouts.

• FOR DOUBLE THICKNESS: Fold fabric with RIGHT sides together.

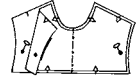
• FOR SINGLE THICKNESS: Place fabric RIGHT side up.

• FOR PILE, SHADED OR ONE WAY DESIGN FABRICS: Use "with nap" layouts

**AFTER CUTTING:**  
Transfer markings to WRONG side of fabric before removing pattern. Use pin and chalk method or dressmaker's tracing paper and wheel.

#### To Quick Mark:

- Snip edge of fabric to mark notches, ends of fold lines and center lines.
- Pin mark dots.



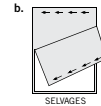
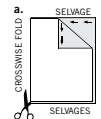
### SPECIAL CUTTING NOTES

★ If layout shows a piece extending past fold, cut out all pieces except piece that extends.

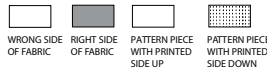
Open out fabric to single thickness. Cut extending piece on RIGHT side of fabric in position shown.

✱ Mark small arrows along both selvages indicating direction of nap or design. Fold fabric crosswise with RIGHT sides together, and cut along fold (a).

Turn one fabric layer around so arrows on both layers go in the same direction. Place RIGHT sides together (b).



## Cutting Layouts

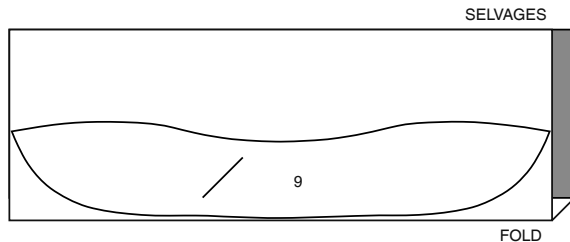


POSITION OF PATTERN PIECES MAY VARY SLIGHTLY ACCORDING TO YOUR PATTERN SIZE

### INTERFACING A,B,C

USE PIECES 9

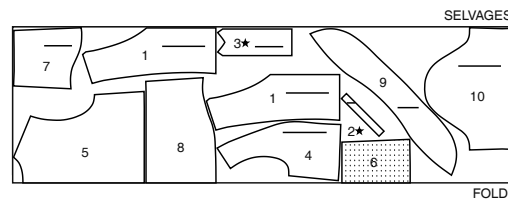
20" (51CM)  
ALL SIZES



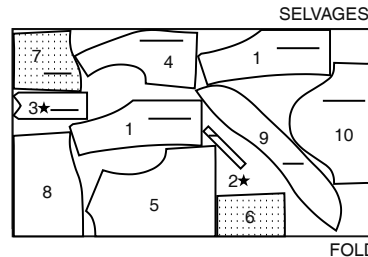
### TOP A

USE PIECES 1 2 3 4 5 6 7 8 9 10

45" (115CM)  
WITH NAP  
ALL SIZES



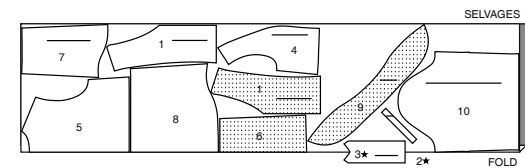
60" (150CM)  
WITH NAP  
ALL SIZES



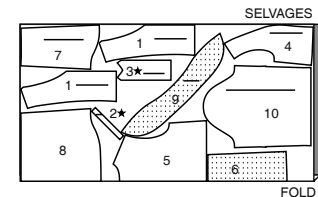
### TOP B

USE PIECES 1 2 3 4 5 6 7 8 9 10

45" (115CM)  
WITH NAP  
ALL SIZES

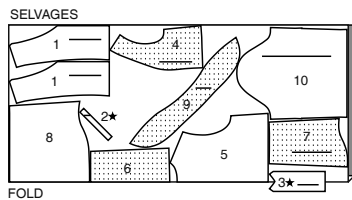


60" (150CM)  
WITH NAP  
SIZES 4 6 8 10 12 14



CUTTING LAYOUTS CONTINUED ON PAGE 2

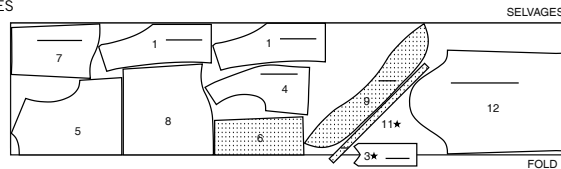
60" (150CM)  
WITH NAP  
SIZES 16 18 20



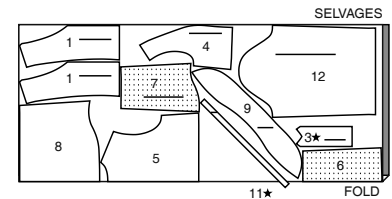
### TOP C

USE PIECES 1 3 4 5 6 7 8 9 11 12

45" (115CM)  
WITH NAP  
ALL SIZES



60" (150CM)  
WITH NAP  
ALL SIZES



### SEWING TUTORIALS



Build your skills viewing short, easy-to-follow videos at  
[simplicity.com/sewingtutorials](https://www.simplicity.com/sewingtutorials)

## Sewing Directions

**FABRIC KEY** RIGHT SIDE WRONG SIDE INTERFACING LINING Lining

Read **General Directions** on page 1 before you begin.

Sewing methods in **BOLD TYPE** have Sewing Tutorial Video available.  
Scan QR CODE to watch videos:

**NARROW HEM** - see Hems: "sewing narrow hems" video.

**EDGE STITCH** - see Machine Stitches: "how to edgestitch" video.

**REINFORCE** - see Machine Stitches: "how to reinforce" video.

**STAYSTITCH** - see Machine Stitches: "how to do stay-stitching" video.

**UNDERSTITCH** - see Machine Stitches: "how to understitch" video.

**FINISH** - see Seams: "how to finish seam allowances" video.

**SLIPSTITCH** - Slide needle through a folded edge, then pick up a thread of underneath fabric.

**INTERFACING** - Pin interfacing to **WRONG** side of fabric. Fuse interfacing in place following manufacturer's directions.

### TOP A, B, C

#### UPPER FRONT AND BACK

- 1. STAYSTITCH** side edge of upper front (1) between notches in direction of arrow.  
**NOTE:** Remaining upper front sections will be used as facing.

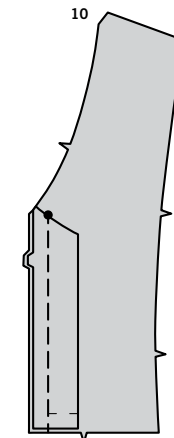
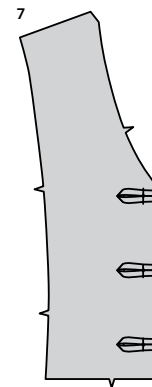
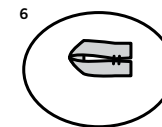
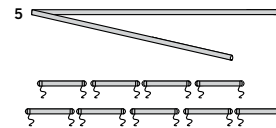
#### FOR VIEWS A, B-

- With **RIGHT** sides together, fold loops (2) in half lengthwise. Stitch in a 1/4" (6mm) seam, leaving ends open. Trim seam.

- Turn **RIGHT** side out. Press. Cut loops into three sections, each 1 1/4" (3.2cm) long. Baste ends.

#### FOR VIEW C

- With **RIGHT** sides together, fold loops (11) in half lengthwise. Stitch in a 1/4" (6mm) seam, leaving ends open. Trim seam.



- Turn **RIGHT** side out. Press. Cut loops into nine sections, each 1 1/4" (3.2cm) long. Baste ends.

#### CONTINUE AS FOLLOWS FOR ALL VIEWS

- Bring ends together, having raw edges even. Tack, as shown.

- On **OUTSIDE**, pin loops to **RIGHT** upper front, centering over small dots, having raw edges even. Baste.  
**NOTE:** For View C, remaining loops will be used for sleeve.

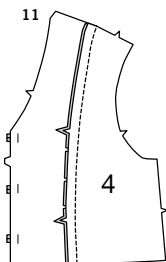
- With **RIGHT** sides together, fold underlap (3) in half lengthwise, matching notches and large dots. Stitch upper edge. Trim seam.

- Turn **RIGHT** side out. Press. Baste raw edges.

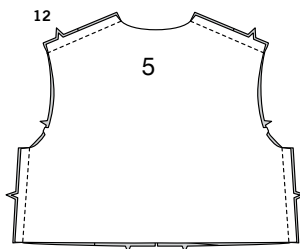
- On **OUTSIDE**, pin underlap to **LEFT** upper front edge, matching notches and large dots. Baste.

S9889

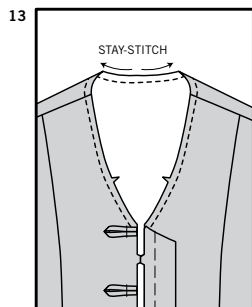
3 of 4



**11.** With RIGHT sides together, pin one upper side front (4) section to each upper front, matching notches, clipping upper front where necessary. Baste. Stitch.

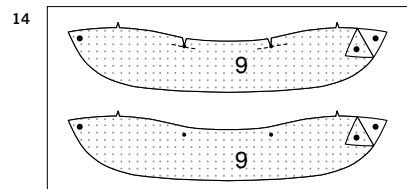


**12.** Stitch upper back (5) to upper fronts at shoulders and sides.

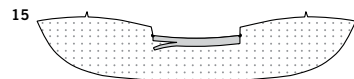


#### COLLAR AND FACING

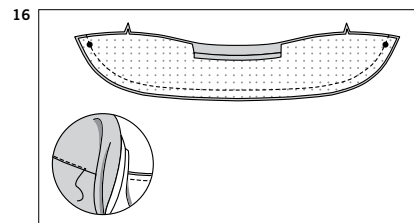
**13.** STAYSTITCH neck edge in direction of arrow.



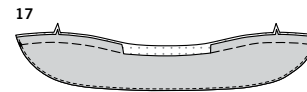
**14.** Apply **INTERFACING** to collar (9). For facing, **REINFORCE** one collar section through small dots, as shown. Clip to small dots.



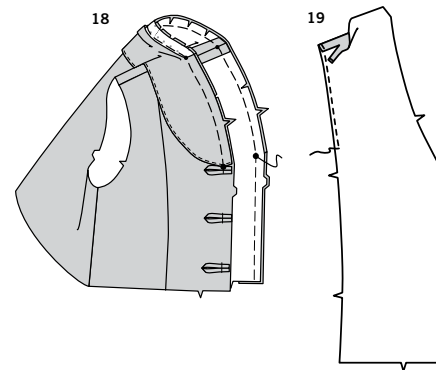
**15.** Press under seam allowance between clips. Trim pressed seam allowance to 3/8" (1cm).



**16.** With RIGHT sides together, pin collar to collar facing, matching centers. Stitch long unnotched edge. Trim seam. **UNDERSTITCH** collar.

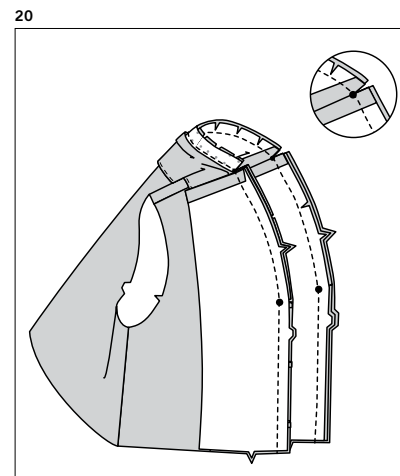


**17.** Turn RIGHT side out. Press. Baste raw edges.

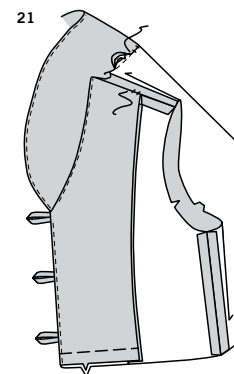


**18.** On OUTSIDE, pin collar to neck edge, facing side up, matching centers and large dots, placing small dots at shoulder seams, clipping neck edge where necessary. Baste.

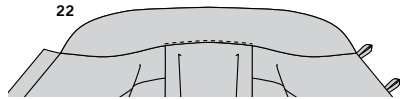
**19.** **FINISH** inner edge of upper front facing. Press under seam allowances on shoulder edges. Trim pressed seam allowances to 3/8" (1cm).



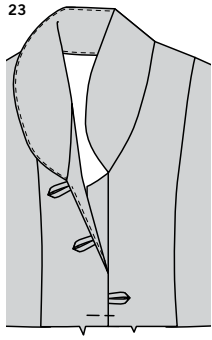
**20.** With RIGHT sides together, pin facing to upper front, over collar, matching dots and notches. Stitch front opening and neck edges, keeping pressed edge of collar free. Trim seam. Clip seam allowances at shoulders. **UNDERSTITCH** facing.



**21.** Turn facing to INSIDE, turning collar out. Press seam toward collar between clips. **SLIPSTITCH** pressed edge over seam. Tack front facing shoulder edges to seam allowances. Baste lower edges.

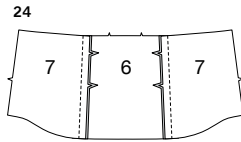


**22.** EDGESTITCH seam between clips.

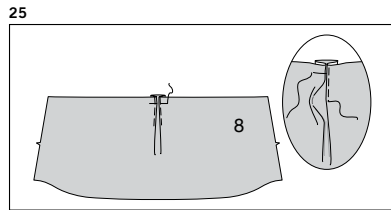


**23.** Lap RIGHT front over LEFT, matching centers. Baste across lower edges.

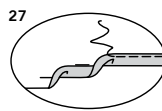
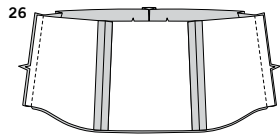
### LOWER FRONT, SLEEVE AND FINISHING



**24.** With RIGHT sides together, pin lower side front (7) sections to lower front (6) at sides, matching notches. Stitch.

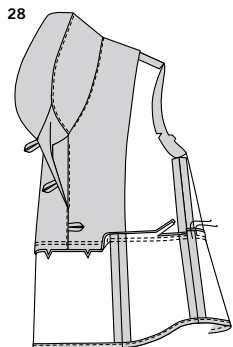


**25.** To make pleat in lower back (8), fold along solid lines. Bring folds to center. Baste. Baste across upper edge.

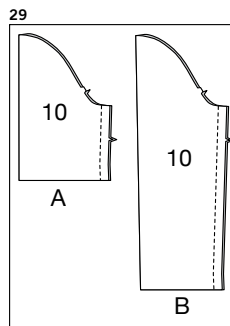


**26.** Stitch lower front to lower back at sides.

**27.** Make **NARROW HEM** at lower edge.



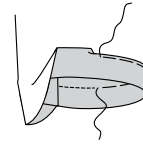
**28.** With RIGHT sides together, pin lower front and back to upper front and back matching centers and seams. Stitch. Stitch again 1/4" (6mm) away in seam allowances. Trim close to second stitching. Press seam down.



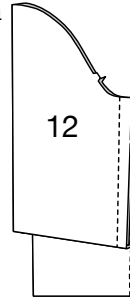
**FOR VIEWS A, B**

**29.** Stitch sleeve (10) seam.

**30.**



**31.**

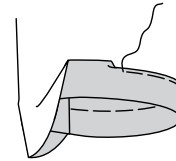


**30.** Turn up 1 1/4" (3.2cm) hem on lower edge of sleeve. Turn 1/4" (6mm) on raw edge of hem to wrong side; press. Baste close to inner edge of hem. On OUTSIDE, stitch as basted.

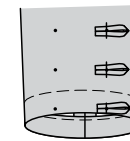
**FOR VIEW C**

**31.** Stitch sleeve (12) seam.

**32.**



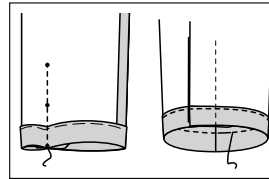
**33.**



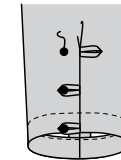
**32.** Turn up 1 1/4" (3.2cm) hem on lower edge of sleeve. Turn 1/4" (6mm) on raw edge of hem to wrong side; press. Baste.

**33.** Pin remaining loops to sleeve front, centering over small dots, as shown, having raw edges toward sleeve back. Baste.

**34.**



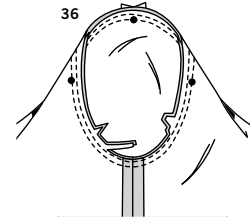
**35.**



**34.** To form pleat in sleeve, on INSIDE, bring broken lines together, matching small dots. Baste. Stitch along broken line to upper small dot. Press pleat toward sleeve front. Stitch close to inner edge of hem, as shown, continuing along pleat.

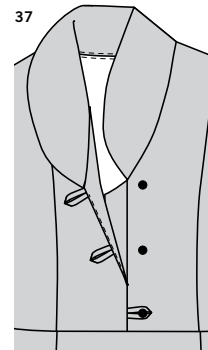
**35.** Using loops as guides, make button markings in sleeve. Sew buttons to sleeve at markings, as shown.

### CONTINUE AS FOLLOWS FOR ALL VIEWS



**36.** With RIGHT sides together, pin sleeve to armhole edge with center small dot at shoulder seam, matching notches and remaining small dots. Stitch. Stitch again 1/4" (6mm) away in seam allowances. Trim close to second stitching. Press seam toward sleeve.

**37.**



**37.** Using loops as guides, make button markings in LEFT upper front. Sew buttons to LEFT upper front at markings, as shown.



# Congrats!

You've completed your sewing adventure

---

## SHARE YOUR LOOK



Post your pattern and tag us  
**@simplicity\_creative\_group** and **#simplicitypatterns**  
for a chance to be featured on our social media.

Look for more PDF patterns at [simplicity.com](https://www.simplicity.com)

Have a question or need help with your sewing project call us at  
1-888-588-2700



Simplicity ©2023 a division of IG Design Group Americas Inc. • Atlanta, GA 30342 USA [www.thedesigngroup.com](https://www.thedesigngroup.com) • All Rights Reserved. [www.simplicity.com](https://www.simplicity.com) • Made in the U.S.A. Fabriqué aux États-Unis.

To be used for individual private home use only and not for commercial or manufacturing purposes. • A usage privé seulement et non à des fins commerciales ou de production en série. • Para uso privado solamente, no se puede utilizar con propósitos de comercialización o de producción en serie.