

S9888

Simplicity®



A



B



C

Designed and
printed in USA.

Average

MISSES' DRESSES

Suggested Fabrics: Cotton Blends, Gingham, Linen Blends, Poplin, Shirtings. **Interfacing:** Lightweight Fusible.

Notions: A,B,C: Five ½" (1.3cm) buttons, ¾" (1cm) elastic: ¾ yd. (0.8m) for A, 1 ¼ yds. (1.8m) for B,C. **Also for B,C:** One pkg. of ½" (1.3cm) single fold bias tape.

Sizes	6	8	10	12	14	16	18	20	22
European	32	34	36	38	40	42	44	46	48

BODY MEASUREMENTS: Select pattern size based on body measurements

Bust	30½	31½	32½	34	36	38	40	42	44	Ins.
Waist	23	24	25	26½	28	30	32	34	37	"
Hip-9" below waist	32½	33½	34½	36	38	40	42	44	46	"
Back-neck to waist	15½	15½	16	16¼	16½	16¾	17	17¼	17½	"

Dress A	45**	3¼	¾	¾	¾	¾	¾	¾	¾	¾	Yds.
	60**	2¼	2¼	2¼	2¼	2¼	3	3	3	3	"

Contrast (Right and Left Plackets, Collar Band)- 45** - ½ yd.

Interfacing 20" - ¾ yd.

Dress B	45**	3	¾	¾	¾	¾	¾	¾	¾	¾	Yds.
	60**	2¼	2¼	2¼	2¼	2¼	2¼	2¼	2¼	2¼	"

Interfacing B,C 20" - ¾ yd.

Dress C	45**	3¾	¾	¾	¾	¾	¾	¾	¾	¾	Yds.
	60**	2¾	2¼	2¼	3	3	¾	¾	¾	¾	"

Contrast (Right and Left Plackets, Collar Band, Collar)- 45** - ½ yd.

FINISHED GARMENT MEASUREMENTS (Includes Design and Wearing Ease)

A,B,C Bust	41	42	43	44½	46½	48½	50½	52½	54½	Ins.
A,B,C Waist	41	42	43	44½	46½	48½	50½	52½	54½	"

Width, lower edge

Dress A,B	56	57	58	59½	61½	63½	65½	67½	69½	Ins.
Dress C	61¼	62¼	63¼	64¾	66¾	68¾	70¾	72¾	74¾	"

Finished back length from base of neck

Dress A,B	40½	40¾	41	41¼	41¾	41¾	42	42¼	42½	Ins.
Dress C	49½	49¾	50	50¼	50¾	50¾	51	51¼	51½	"

*with nap **without nap

Moins Facile

ROBES POUR JEUNES FEMMES

Tissus Conseillés: Cotonnades, Vichy, Toile de lin mélangés, Popeline, Shirtings. **Entoilage :** thermocollant léger.

Mercerie: A,B,C : 5 boutons de 1.3cm, élastique de 1cm : 0.8m pour A, 1.8m pour B,C. **Aussi pour B,C :** 1 paquet de ruban de biais simple de 1.3cm.

Tailles	6	8	10	12	14	16	18	20	22
Françaises	34	36	38	40	42	44	46	48	50
Européen	32	34	36	38	40	42	44	46	48

MESURES DU CORPS: Choisissez la taille du patron basée sur les mesures du corps

Poitrine	78	80	83	87	92	97	102	107	112	cm
Taille	58	61	64	67	71	76	81	87	94	"

Hanches (23cm au-dessous de la taille)

	83	85	88	92	97	102	107	112	117	cm
	39.5	40	40.5	41.5	42	42.5	43	44	44	"

Dos du cou à la taille	39.5	40	40.5	41.5	42	42.5	43	44	44	"
Robe A	115cm*	3.0	3.0	3.0	3.0	3.0	3.2	3.2	3.3	m
	150cm*	1.9	2.1	2.1	2.1	2.1	2.6	2.7	2.7	"

Contraste (Pattes de fermeture droite et gauche, Pied de col) - 115cm* - 0.5m

Entoilage 51cm - 0.7m

Robe B	115cm*	2.7	2.7	2.9	3.1	3.2	3.2	3.3	3.4	m
	150cm*	2.1	2.2	2.2	2.3	2.3	2.5	2.6	2.6	"

Entoilage B,C 51cm - 0.7m

Robe C	115cm*	3.4	3.5	3.5	3.5	3.5	3.7	3.7	3.8	m
	150cm*	2.6	2.6	2.7	2.8	2.8	3.1	3.2	3.2	"

Contraste (Pattes de fermeture droite et gauche, Pied de col, Col)- 115cm* - 0.5m

MESURES DES VÊTEMENTS FINI (Motif et aisance de port compris)

A,B,C Poitrine	104	107	109	113	118	123	128	133	138	cm
A,B,C Taille	104	107	109	113	118	123	128	133	138	"

Largeur à l'ourlet

Robe A,B	142	145	147	151	156	161	166	171	177	cm
Robe C	156	158	161	164	170	175	180	185	190	"

Longueur finie – dos, votre nuque à l'ourlet

Robe A,B	103	104	104	105	105	106	107	107	108	cm
Robe C	126	126	127	128	128	129	130	130	131	"

*avec sens **sans sens



A



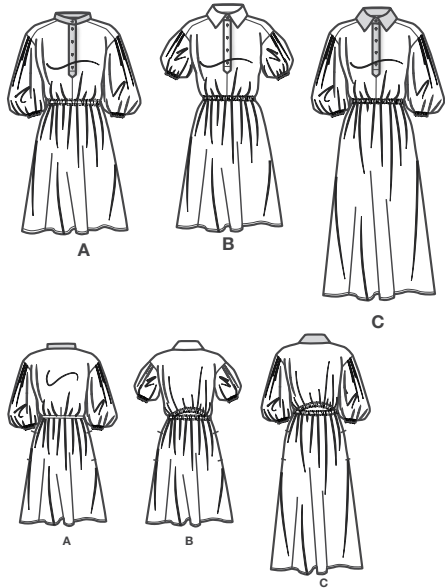
B



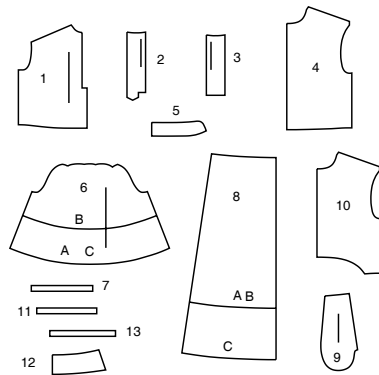
C

Simplicity®

Thank you for purchasing this Simplicity pattern.
We made every effort to provide you with a high quality product.



13 PIECES



- 1 BODICE FRONT - A,B,C
- 2 RIGHT PLACKET - A,B,C
- 3 LEFT PLACKET - A,B,C
- 4 BODICE BACK - A
- 5 COLLAR BAND - A,B,C
- 6 SLEEVE - A,B,C
- 7 ELASTIC GUIDE FOR SLEEVE - A,C
- 8 SKIRT FRONT AND BACK - A,B,C
- 9 POCKET - A,B,C
- 10 BODICE BACK - B,C
- 11 ELASTIC GUIDE FOR BACK - B,C
- 12 COLLAR - B,C
- 13 ELASTIC GUIDE FOR SLEEVE - B

General Directions

The Pattern

- SYMBOLS**
- GRAIN LINE Place on straight grain of fabric parallel to selvage
 - PLACE SOLID LINE on fold of fabric.
 - CENTER FRONT OR BACK of garment.
 - NOTCHES
 - DOTS
 - CUTTING LINE
 - LENGTHEN OR SHORTEN LINES

SEAM ALLOWANCE: 5/8" (1.5cm) unless otherwise stated is included but not printed on MULTI-SIZE PATTERNS. Mark your size with colored felt tip pen. See chart on tissue for how to use MULTI-SIZE PATTERNS.

ADJUST IF NEEDED
Make adjustments before placing pattern on fabric.

TO LENGTHEN:
Cut pattern between lengthen or shorten lines. Spread pattern evenly, the amount needed and tape to paper.

TO SHORTEN:
At lengthen or shorten lines, make an even pleat taking up amount needed. Tape in place.

When lengthen or shorten lines are not given, make adjustments at lower edge of pattern.

Cutting/Marking

BEFORE CUTTING:
PRESS pattern pieces with a warm dry iron. PRE-SHRINK fabric by pre-washing washables or steam-pressing non-washables.

CIRCLE your cutting layout.

PIN pattern to fabric as shown in Cutting Layouts.

• **FOR DOUBLE THICKNESS:** Fold fabric with RIGHT sides together.

• **FOR SINGLE THICKNESS:** Place fabric RIGHT side up.

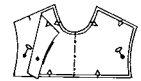
• **FOR PILE, SHADED OR ONE WAY DESIGN FABRICS:** Use "with nap" layouts

AFTER CUTTING:
Transfer markings to WRONG side of fabric before removing pattern. Use pin and chalk method or dressmaker's tracing paper and wheel.

To Quick Mark:

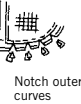
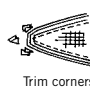
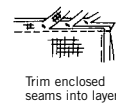
• Snip edge of fabric to mark notches, ends of fold lines and center lines.

• Pin mark dots.



Sewing

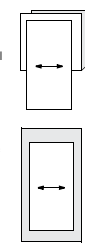
- SEW garment following **Sewing Directions**.
- PIN or machine-baste seams matching notches.
- STITCH 5/8" (1.5 cm) seams unless otherwise stated.
- PRESS seams open unless otherwise indicated clipping when necessary so seams will lie flat.
- TRIM seams to reduce bulk, as shown below.



SPECIAL CUTTING NOTES

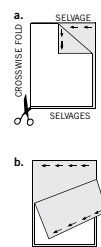
★ If layout shows a piece extending past fold, cut out all pieces except piece that extends.

Open out fabric to single thickness. Cut extending piece on RIGHT side of fabric in position shown.



✱ Mark small arrows along both selvages indicating direction of nap or design. Fold fabric crosswise with RIGHT sides together, and cut along fold (a).

Turn one fabric layer around so arrows on both layers go in the same direction. Place RIGHT sides together (b).



Cutting Layouts

- WRONG SIDE OF FABRIC
- RIGHT SIDE OF FABRIC
- PATTERN PIECE WITH PRINTED SIDE UP
- PATTERN PIECE WITH PRINTED SIDE DOWN

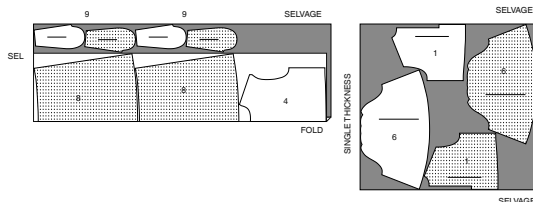
★ SEE SPECIAL CUTTING NOTES

POSITION OF PATTERN PIECES MAY VARY SLIGHTLY ACCORDING TO YOUR PATTERN SIZE

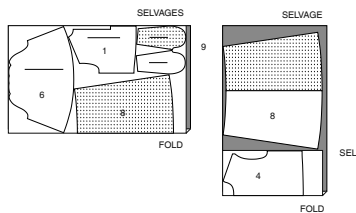
DRESS A

USE PIECES 1 4 6 8 9

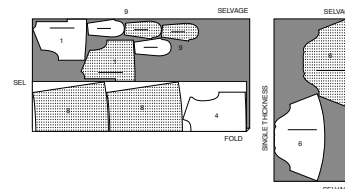
45" (115CM)
WITH NAP
ALL SIZES



60" (150CM)
WITH NAP
SIZES 6 8 10 12 14



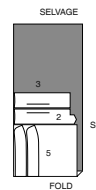
60" (150CM)
WITH NAP
SIZES 16 18 20 22



CONTRAST (RIGHT AND LEFT PLACKETS, COLLAR BAND)

USE PIECES 2 3 5

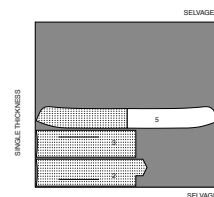
45" (115CM)
WITH NAP
ALL SIZES



INTERFACING A

USE PIECES 2 3 5

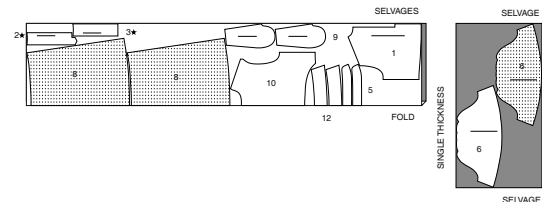
20" (51CM)
ALL SIZES



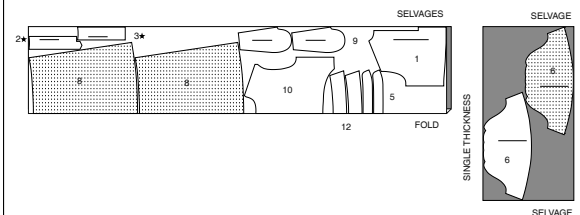
DRESS B

USE PIECES 1 2 3 5 6 8 9 10 12

45" (115CM)
WITH NAP
ALL SIZES
CUT ONE OF PIECES 2 3



60" (150CM)
WITH NAP
SIZES 6 8 10 12 14 16



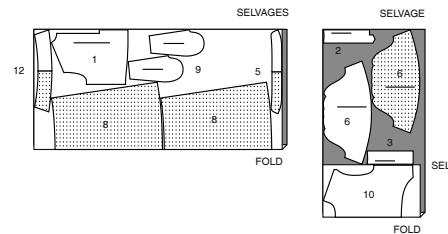
CUTTING LAYOUTS CONTINUED ON PAGE 2

S9888

2 of 4

45" (115CM)
WITH NAP
SIZES 18 20 22

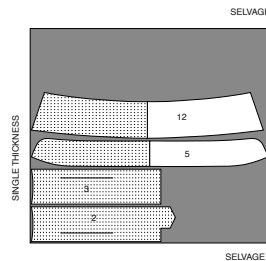
CUT ONE OF PIECES 2 3



INTERFACING B,C

USE PIECES 2 3 5 12

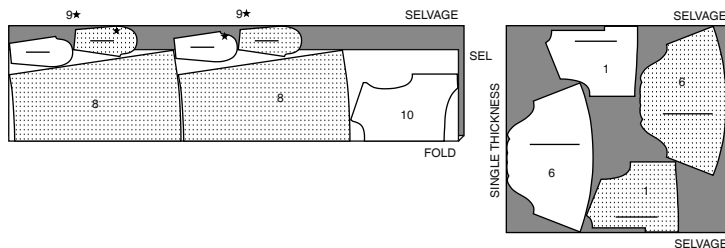
20" (51CM)
ALL SIZES



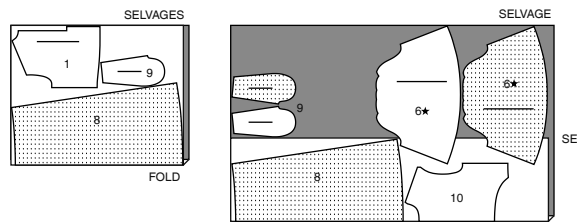
DRESS C

USE PIECES: 1 6 8 9 10

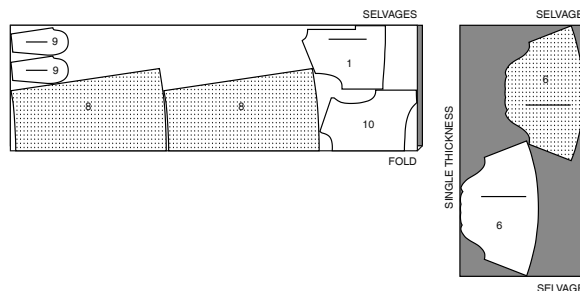
45" (115CM)
WITH NAP
ALL SIZES



60" (150CM)
WITH NAP
SIZES 6 8 10 12 14



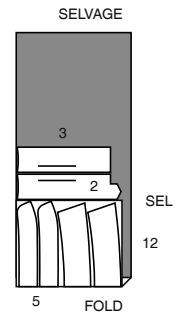
60" (150CM)
WITH NAP
SIZES 16 18 20 22



CONTRAST (RIGHT AND LEFT PLACKETS, COLLAR BAND, COLLAR)

USE PIECES 2 3 5 12

45" (115CM)
WITH NAP
ALL SIZES



SEWING TUTORIALS



Build your skills viewing short, easy-to-follow videos at [simplicity.com/sewingtutorials](https://www.simplicity.com/sewingtutorials)

Sewing Directions

FABRIC
KEY



Read **General Directions** on page 1 before you begin.

Sewing methods in **BOLD TYPE** have Sewing Tutorial Video available. Scan QR CODE to watch videos:

EDGESTITCH - see **Machine Stitches: "how to edgestitch"** video.

NARROW HEM - see **Hems: "sewing narrow hems"** video.

STAYSTITCH - see **Machine Stitches: "how to do stay stitching"** video.

TRIM SEAM - see **Seams: "how to trim, clip and layer seams"** video.

UNDERSTITCH - see **Machine Stitches: "how to understitch"** video.

PATTERN PIECES WILL BE IDENTIFIED BY NUMBERS THE FIRST TIME THEY ARE USED.

STITCH 5/8" (1.5CM) SEAMS WITH RIGHT SIDES TOGETHER UNLESS OTHERWISE STATED.

DRESS A, B, C

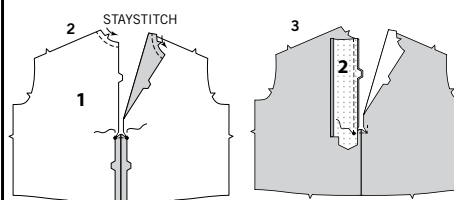
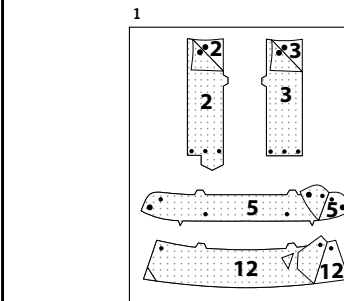
INTERFACING

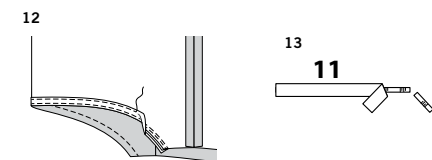
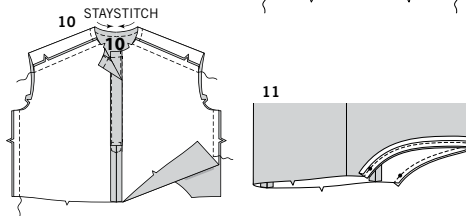
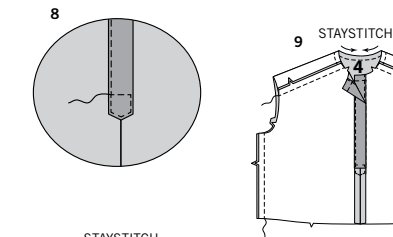
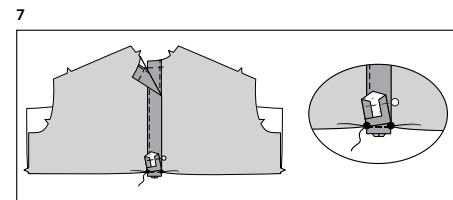
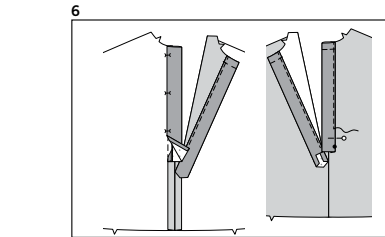
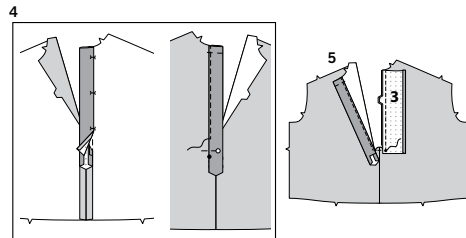
1. Pin interfacing to wrong side of **RIGHT PLACKET (2)**, **LEFT PLACKET (3)**, **COLLAR BAND (5)**, and for Views B, C, **COLLAR (12)**. Fuse interfacing in place following manufacturer's directions.

BODICE FRONT

2. **STAYSTITCH** neck edge of **BODICE FRONT (1)** in the direction of the arrows. Stitch center front seam. To reinforce front at small dots, stitch along stitching lines. Clip to small dots.

3. Press under a generous 1/4" (6mm) on unnotched long edge of **RIGHT PLACKET (2)**. With right sides together and raw edges even, pin right placket to right front, matching small dots and notches. Stitch in a 3/8" (1cm) seam from upper edge to small dot, backstitching at dot to reinforce the seam.





4. Press seam toward placket, pressing placket out. Fold placket along foldline. On inside, pin pressed edge of placket over seam, placing pins on outside. On outside, **EDGE STITCH** inner edge of placket from upper edge to small dot, catching in placket facing on the inside. Baste upper edge of placket.
5. Press under a generous 1/4" (6mm) on unnotched long edge of **LEFT PLACKET (3)**. Keeping right placket free, with right sides together and raw edges even, pin left placket to left front, matching small dots and notches. Stitch in a 3/8" (1cm) seam from upper edge to small dot, backstitching at dot to reinforce the seam.

6. Press seam toward placket, pressing placket out. Fold placket along foldline. On inside, pin pressed edge of placket over seam, placing pins on outside. On outside, **EDGE STITCH** inner edge of placket from upper edge to small dot, catching in placket facing on the inside. Baste upper edge of placket.

7. On outside, lap right placket over left placket, matching small dots. Turn under lower bodice front to stitching line between the small dots. Turn up front edge of right placket. Stitch along stitching line between the small dots, stitching lower back seam allowance of right facing to lower seam allowance of left placket.

8. Press under lower front edges of right placket. Press front. Pin lower edge of right placket over seam. On outside, **EDGE STITCH** lower edge of front placket between lower small dots, pivoting with needle in fabric at center front.

BODICE BACK A

9. **STAYSTITCH** neck edge of BODICE BACK (4) in direction of arrows. Stitch front to back at forward shoulder edges and side edges. Press seams toward back.

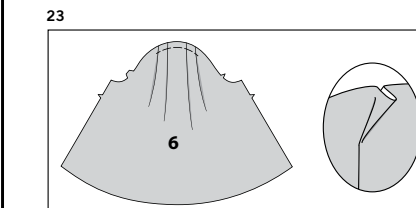
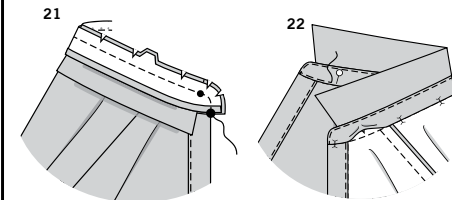
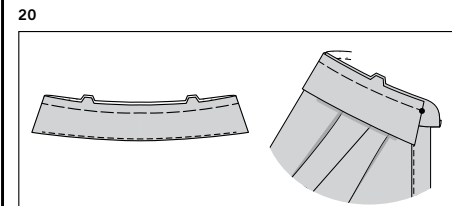
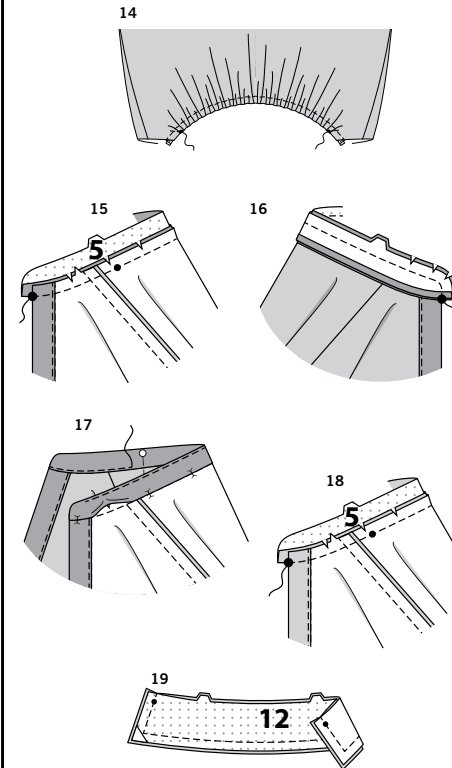
BODICE BACK B, C

10. **STAYSTITCH** neck edge of BODICE BACK (10) in direction of arrows. Stitch front to back at forward shoulder edges and side edges. Press shoulder seams toward back.

11. Cut a piece of single fold bias tape the length of the lower edge of back between the small dots, plus 1-1/2" (3.8cm). Open out one edge of tape. With right sides together, pin tape to lower edge of back having crease 3/8" (1 cm) from raw edge and lapping small dots 3/4" (2cm). Stitch. **TRIM SEAM.**

12. **UNDERSTITCH** the tape. Turn tape to inside; press. Stitch close to inner edge of tape.

13. Cut a piece of elastic the length of **ELASTIC GUIDE FOR BACK (11)**.



14. Thread elastic through casing; distribute fullness. Stitch across ends of elastic securely at small dots.

COLLAR BAND A

15. Clip dress neck edge to stay-stitching. With right sides together, pin COLLAR BAND (5) to neck edge, matching centers back, notches, and large dots, placing small dots at shoulder seams. (End of collar extends 5/8" (1.5cm) beyond front edge of garment.) Stitch neck edge. **TRIM SEAM.** Press collar out, pressing seam toward collar band.

16. Press under 5/8" (1.5cm) on notched edge of collar facing. Trim to 1/4" (6mm). With right sides together, pin collar band facing to collar band, matching centers back and large dots, having raw edges even. Stitch. **TRIM SEAM.**

17. **UNDERSTITCH** collar band facing. Turn collar band facing to inside; press. Pin pressed edge of facing over seam, placing pins on outside. On outside, stitch collar band close to seam, catching in pressed edge of facing on inside.

COLLAR BAND AND COLLAR B, C

18. Clip dress neck edge to stay-stitching. With right sides together, pin single notched edge of COLLAR BAND (5) to neck edge, matching centers back, notches, and large dots, placing small dots at shoulder seams. (Collar band extends 5/8" (1.5cm) beyond front opening edges.) Stitch neck edge. **TRIM SEAM.** Press collar band out; press seam toward band.

19. With right sides together and raw edges even, stitch facing to COLLAR (12), leaving notched edges open. **TRIM SEAM.**

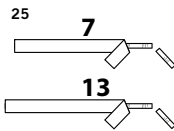
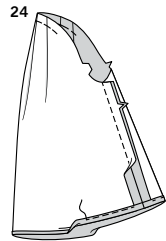
20. **UNDERSTITCH** the collar facing. Turn collar; press. Machine-baste raw edges together. With right sides together and raw edges even, pin collar (facing side) to collar band, matching centers back and double notches, placing ends at small dots. Machine-baste.

21. Press under 5/8" (1.5cm) on single notched edge of collar band facing; trim to 1/4" (6mm). With right sides together, pin collar band facing to collar band (over collar), matching centers. Stitch front and double notched edge. **TRIM SEAM.**

22. Turn collar band facing to inside; press. Pin pressed edge of facing over seam, placing pins on outside. On outside, stitch close to all edges of collar band, catching in pressed edge of facing on inside.

SLEEVE

23. To make pleats in SLEEVE (6), on outside, fold along solid lines. Bring folds to broken lines; pin. Baste across raw edge.



24. Stitch underarm seam of sleeve.
Press up 5/8" (1.5cm) on lower edge of sleeve. Turn under raw edge 1/4" (6mm). Stitch close to inner edge of casing, leaving an opening to insert elastic.

25. Cut a piece of elastic for each sleeve the length of ELASTIC GUIDE FOR SLEEVE (7) for Views A and C, or ELASTIC GUIDE FOR SLEEVE (13) for View B.

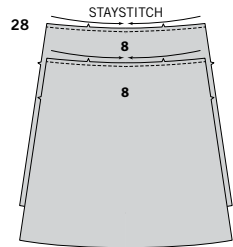
26. Insert elastic through casing; adjust to fit. Stitch ends of elastic together securely. Stitch opening closed. Distribute fullness evenly.

TIP – To secure elastic so it won't twist in wearing, stitch through all thicknesses of casing in the groove of seam.

27. Turn sleeve right side out. Hold dress wrong side out with armhole toward you. With right sides together, pin sleeve to armhole edge, matching small dots and underarm seams. Baste. Stitch. Stitch again 1/8" (3mm) from first stitching. Trim seam below notches close to stitching. Press only the seam allowance, shrinking out fullness.

SKIRT

28. STAYSTITCH SKIRT FRONT AND BACK (8) sections in direction of arrows.

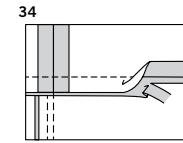
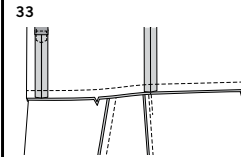
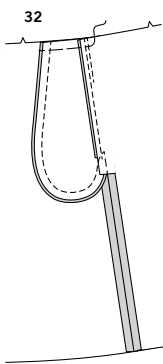
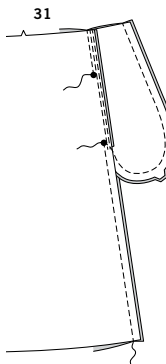
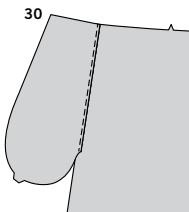
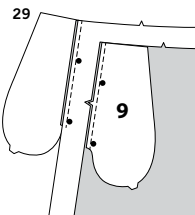


29. With right sides together, pin POCKET (9) to front and back sections, matching large dots, having raw edges even. Stitch in 3/8" (1cm) seam.

30. UNDERSTITCH front pocket. Press seam toward pocket, pressing pocket out.

31. Pin front to back at side seams, matching large dots. Stitch side seams, leaving an opening between the large dots. Stitch pocket edges together from side seam to upper edge.

32. Clip skirt back seam allowance at lower end of pocket, as shown. Press seam open below clips. Press pocket toward front. Baste to upper edge of skirt.



CONTINUE AS FOLLOWS FOR VIEW A

33. With right sides together, pin skirt to bodice at waistline seam, matching centers and side seams. Stitch in a 3/4" (2cm) seam.

34. Trim the skirt seam allowance only to within 1/4" (6mm) of stitching.

35. To form waistline casing, press seam allowance seam down. Turn under 1/4" (6mm) on raw edge of bodice; press. Stitch close to pressed edge, leaving an opening at one side seam to insert elastic.

36. Cut a piece of elastic to fit waist, plus 1" (2.5cm). Insert elastic through opening in casing. Adjust to fit. Stitch ends of elastic together securely.

37. Stitch opening closed. Distribute fullness evenly.

TIP – To secure elastic so it won't twist in wearing, stitch through all thicknesses of casing in the groove of each seam.

CONTINUE AS FOLLOWS FOR VIEWS B, C

38. With right sides together, pin skirt to bodice at waistline seam, matching centers, small dots, and side seams. Stitch in a 3/4" (2cm) seam.

39. Trim the skirt front seam allowance only to within 1/4" (6mm) of stitching.

40. To form waistline casing, press seam and 3/4" (2cm) on upper edge of back down. Turn under 1/4" (6mm) on raw edge of bodice seam allowance and back edge; press. Stitch close to pressed edge, leaving an opening at one side seam to insert elastic.

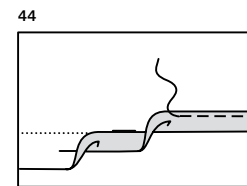
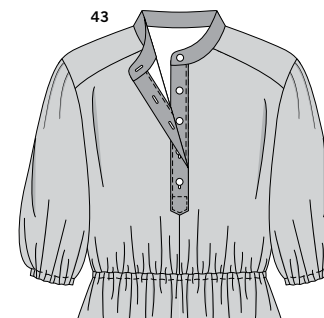
41. Cut a piece of elastic to fit waist, plus 1" (2.5cm). Insert elastic through opening in casing. Adjust to fit. Stitch ends of elastic together securely.

42. Stitch opening closed. Distribute fullness evenly.

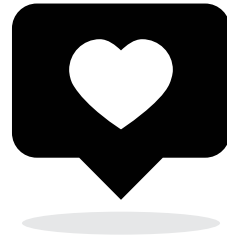
TIP – To secure elastic so it won't twist in wearing, stitch through all thicknesses of casing in the groove of each seam.

FINISHING

43. Make buttonholes in right front placket and collar band at markings. Lap right front over left, matching centers. Sew buttons under buttonholes.



44. Press up 5/8" (1.5cm) hem allowance on lower edge of skirt. **NARROW HEM.**



Congrats!

You've completed your sewing adventure

SHARE YOUR LOOK



Post your pattern and tag us
@simplicity_creative_group and **#simplicitypatterns**
for a chance to be featured on our social media.

Look for more PDF patterns at [simplicity.com](https://www.simplicity.com)

Have a question or need help with your sewing project call us at
1-888-588-2700



Simplicity ©2023 a division of IG Design Group Americas Inc. • Atlanta, GA 30342 USA www.thedesigngroup.com • All Rights Reserved. www.simplicity.com • Made in the U.S.A. Fabriqué aux États-Unis.

To be used for individual private home use only and not for commercial or manufacturing purposes. • A usage privé seulement et non à des fins commerciales ou de production en série. • Para uso privado solamente, no se puede utilizar con propósitos de comercialización o de producción en serie.