

S9885

Simplicity®

Average

Moins Facile

MISSES' KNIT DRESS IN THREE LENGTHS

**Suggested Fabrics:** Stretch Knits only such as: Bamboo Knit, Interlock, Jersey, Modal, Rayon Knit, Rib Knit, Stretch Velvet. See Pick-A-Knit® Rule.

**Notions:** A,B,C: 2½ yds. (2.00m) of ¾" (1cm) elastic, ¼ yd. (0.4m) length of ½" (1.3cm) twill tape. **Also for C:** One pkg. of ½" (1.3cm) single fold bias tape.

Sizes	8	10	12	14	16	18	20	22	24	26
European	34	36	38	40	42	44	46	48	50	52

BODY MEASUREMENTS: Select pattern size based on body measurements

Bust	31½	32½	34	36	38	40	42	44	46	48	Ins.
Waist	24	25	26½	28	30	32	34	37	39	41½	"
Hip-9" below waist	33½	34½	36	38	40	42	44	46	48	50	"
Back-neck to waist	15½	16	16½	16½	16½	17	17½	17½	17½	17½	"

Dress A	60**	2½	2½	2½	2½	2½	2½	2½	2½	2½	Yds.
Dress B	60**	2½	2½	2½	2½	2½	2½	3	3	3	Yds.
Dress C	60**	3½	3½	3½	3½	3½	3½	3½	3½	4½	Yds.

FINISHED GARMENT MEASUREMENTS (Includes Design and Wearing Ease)

A,B,C Bust	31	32	33½	35½	37½	39½	41½	43½	45½	47½	Ins.
A,B,C Waist	24	25	26½	28½	30½	32½	34½	36½	38½	40½	"
A,B,C Hip	41	42	43½	45½	47½	49½	51½	53½	55½	57½	"
Width, lower edge											
Dress B	44	45	46½	48½	50½	52½	54½	56½	58½	60½	Ins.
Dress C	45	46	47½	49½	51½	53½	55½	57½	59½	61½	"
Finished back length from base of neck											
Dress A	36½	37	37½	37½	37½	38	38½	38½	38½	39	Ins.
Dress B	49½	50	50½	50½	50½	51	51½	51½	51½	52	"
Dress C	56½	57	57½	57½	57½	58	58½	58½	58½	59	"

\*with nap \*\*without nap

ROBE EN TRICOT EN TROIS LONGUEURS POUR JEUNES FEMMES

**Tissus Conseillés:** Seulement des tricotés extensibles tels que : Tricot bambou, Interlock, Jersey, Tricot modal, Tricot de rayonne, Tricot à côtés, Velours extensible. Reportez-vous à la règle Pick-A-Knit®.

**Mercerie:** A,B,C: 2.0m d'élastique de 1cm, 0.4m de galon croisé de 1.3cm. **Aussi pour C:** 1 paquet de ruban de biais simple de 1.3cm.

Tailles	8	10	12	14	16	18	20	22	24	26
Françaises	36	38	40	42	44	46	48	50	52	54
Européen	34	36	38	40	42	44	46	48	50	52

MESURES DU CORPS: Choisissez la taille du patron basée sur les mesures du corps

Poitrine	80	83	87	92	97	102	107	112	117	122	cm
Taille	61	64	67	71	76	81	87	94	99	106	"

Hanches (23cm au-dessous de la taille)

	85	88	92	97	102	107	112	117	122	127	cm
Dos du cou à la taille	40	40.5	41.5	42	42.5	43	44	44	44.5	44.5	"

Robe A	150cm*	1.8	1.9	1.9	1.9	1.9	2.1	2.1	2.1	2.1	m
Robe B	150cm*	2.5	2.5	2.6	2.6	2.6	2.6	2.6	2.7	2.7	m
Robe C	150cm*	3.0	3.0	3.0	3.1	3.1	3.1	3.1	3.1	3.8	m

MESURES DES VÊTEMENTS FINI (Motif et aisance de port compris)

A,B,C Poitrine	79	81	85	90	95	100	105	110	116	121	cm
A,B,C Taille	61	64	67	72	77	83	88	93	98	103	"
A,B,C Hanches	104	107	110	116	121	126	131	136	141	146	"
Largeur à l'ourlet											
Robe B	112	114	118	123	128	133	138	144	149	154	cm
Robe C	114	117	121	126	131	136	141	146	151	156	"
Longueur finie -- dos, votre nuque à l'ourlet											
Robe A	93	94	95	95	96	97	97	98	98	99	cm
Robe B	126	127	128	128	129	130	130	131	131	132	"
Robe C	144	145	145	146	147	147	148	149	149	150	"

\*avec sens \*\*sans sens



Designed and printed in USA.



Use the 1 inch (2.54cm) box to ensure you are using rule at 100%

Utilisez la boîte de 2.54 cm pour vous assurer d'utiliser la règle à 100%.

Utilizar un cuadrado de 2.54 cm para asegurarse de estar usando la regla al 100%.

PICK-A-KNIT® RULE

FOR THIS PATTERN - 4" (10 cm) OF KNIT FABRIC MUST STRETCH CROSSWISE FROM HERE  
POUR CE PATRON - LE JERSEY DOIT S'ÉTIRER DANS LA LARGEUR DE 4" (10 cm) DEPUIS ICI  
PARA ESTE PATRON - LAS MALLAS DEBEN ESTIRARSE A LO ANCHO POR 4" (10 cm) DESDE AQUÍ



TO HERE 50%  
JUSQUE LA 50%  
HASTA ALLA 50%



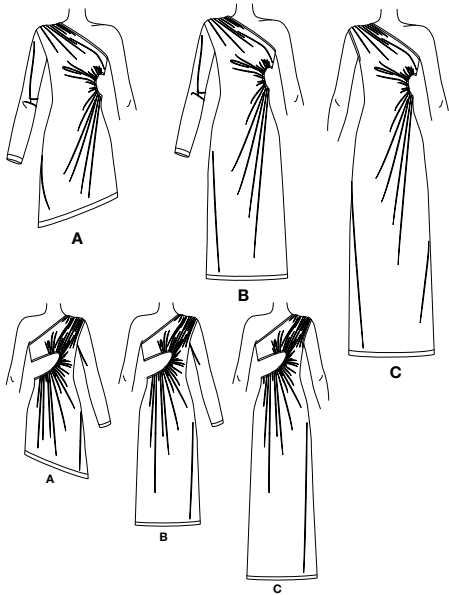
When using the Pick-A-Knit® rule to measure your fabrics stretch capacity, rule must be viewed or printed at 100%.

Quand vous utilisez la règle Pick-A-Knit® pour mesurer la capacité d'élasticité des tissus, la règle doit être visible ou imprimée à 100%.

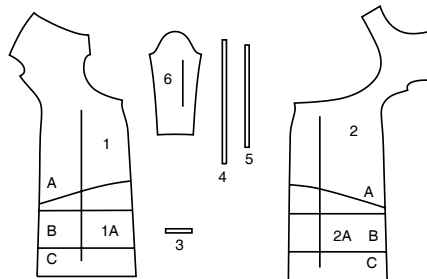
Al utilizar la regla Pick-A-Knit® para medir la capacidad de elasticidad de las telas, la regla debe estar visible o impresa al 100%.

# Simplicity®

Thank you for purchasing this Simplicity pattern.  
We made every effort to provide you with a high quality product.



6 PIECES



- 1 (1A) Front-A,B,C  
2 (2A) Back-A,B,C  
3 Guide for Gathers-A,B,C  
4 Elastic Guide for Neck-A,B,C  
5 Elastic Guide for Front and Back-A,B,C  
6 Sleeve-A,B



www.simplicity.com

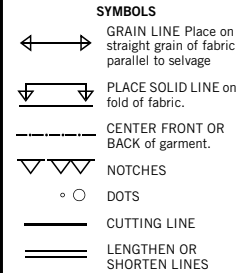


info@simplicity.com



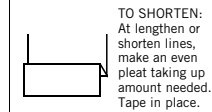
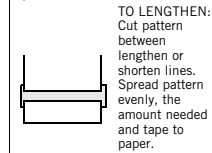
1-888-588-2700

## The Pattern



SEAM ALLOWANCE: 5/8" (1.5cm)  
unless otherwise stated is included but not printed on MULTI-SIZE PATTERNS.  
Mark your size with colored felt tip pen.  
See chart on tissue for how to use MULTI-SIZE PATTERNS.

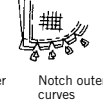
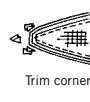
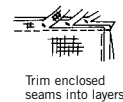
**ADJUST IF NEEDED**  
Make adjustments before placing pattern on fabric.



When lengthen or shorten lines are not given, make adjustments at lower edge of pattern.

## Sewing

- SEW garment following **Sewing Directions**.
- PIN or machine-baste seams matching notches.
- STITCH 5/8" (1.5 cm) seams unless otherwise stated.
- PRESS seams open unless otherwise indicated clipping when necessary so seams will lie flat.
- TRIM seams to reduce bulk, as shown below.



## General Directions

## Cutting/Marking

## BEFORE CUTTING:

PRESS pattern pieces with a warm dry iron. PRE-SHRINK fabric by pre-washing washables or steam-pressing non-washables.

CIRCLE your cutting layout.

PIN pattern to fabric as shown in Cutting Layouts.

• FOR DOUBLE THICKNESS: Fold fabric with RIGHT sides together.

• FOR SINGLE THICKNESS: Place fabric RIGHT side up.

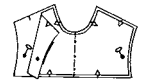
• FOR PILE, SHADED OR ONE WAY DESIGN FABRICS: Use "with nap" layouts

## AFTER CUTTING:

Transfer markings to WRONG side of fabric before removing pattern. Use pin and chalk method or dressmaker's tracing paper and wheel.

## To Quick Mark:

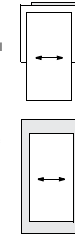
- Snip edge of fabric to mark notches, ends of fold lines and center lines.
- Pin mark dots.



## SPECIAL CUTTING NOTES

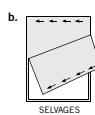
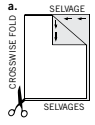
★ If layout shows a piece extending past fold, cut out all pieces except piece that extends.

Open out fabric to single thickness. Cut extending piece on RIGHT side of fabric in position shown.

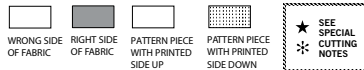


✱ Mark small arrows along both selvages indicating direction of nap or design. Fold fabric crosswise with RIGHT sides together, and cut along fold (a).

Turn one fabric layer around so arrows on both layers go in the same direction. Place RIGHT sides together (b).



## Cutting Layouts



POSITION OF PATTERN PIECES MAY VARY  
SLIGHTLY ACCORDING TO YOUR PATTERN SIZE

## DRESS A

USE PIECES 1 2 6

60" (150CM)  
WITH NAP  
ALL SIZES

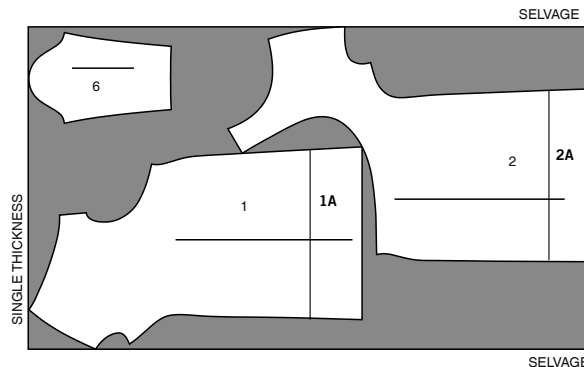


## DRESS B

USE PIECES 1(1A) 2(2A) 6

**NOTE:** BEFORE CUTTING FABRIC, JOIN PIECES IN PARENTHESIS TO CORRESPONDING PIECES FOLLOWING INSTRUCTIONS ON TISSUE PATTERN.

60" (150CM)  
WITH NAP  
ALL SIZES

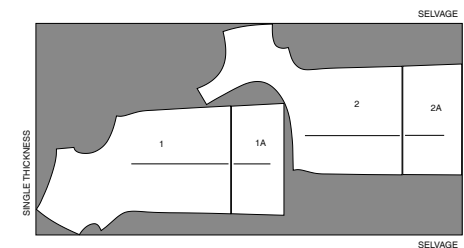


## DRESS C

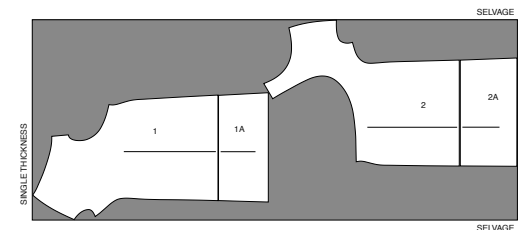
USE PIECES 1(1A) 2(2A) 11 12

**NOTE:** BEFORE CUTTING FABRIC, JOIN PIECES IN PARENTHESIS TO CORRESPONDING PIECES FOLLOWING INSTRUCTIONS ON TISSUE PATTERN.

60" (150CM) WITH NAP  
SIZES 8 10 12 14 16 18 20 22 24



60" (150CM)  
WITH NAP  
SIZES 26



## SEWING TUTORIALS



Build your skills viewing short, easy-to-follow videos at [simplicity.com/sewingtutorials](https://www.simplicity.com/sewingtutorials)

## Sewing Directions

FABRIC  
KEY



Read **General Directions** on page 1 before you begin.

Sewing methods in **BOLD TYPE** have Sewing Tutorial Video available. Scan QR CODE to watch videos:

**SLEEVE** – see **Armholes/Sleeves**: “sewing a set in sleeve” video.

**EASE/GATHER** - see **Gathering**: “sewing two row gathers” video.

**UNDERSTITCH** - see **Machine Stitches**: “how to understitch” video.

**PATTERN PIECES WILL BE IDENTIFIED BY NUMBERS THE FIRST TIME THEY ARE USED.**

**STITCH SEAMS WITH RIGHT SIDES TOGETHER UNLESS OTHERWISE STATED.**

## DRESS A, B, C

## FOR KNITS

- Use a ball point or stretch needle.
- Decrease pressure on presser foot for heavy sweater knits; increase pressure for lingerie knits.
- Stretch knits need seams that are supple enough to “give” with the fabric. You can sew them with straight stitches (stretching the fabric slightly as you sew), narrow zigzag stitches or one of the stretch stitches built into many conventional machines, or on your serger.
- Some knits require very little or no pressing while sewing. Use the appropriate temperature setting. Press lightly or use steam.
- Use a twin sewing machine needle for a double stitched hem.

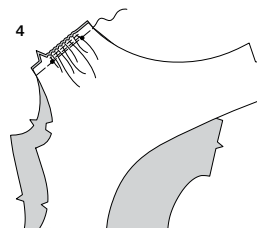
## FRONT AND BACK

## LEFT SHOULDER SEAM

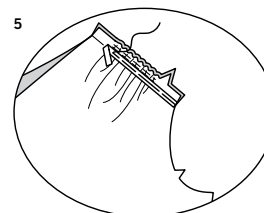
1. To **GATHER** shoulder edge of Front (1), stitch along seam line and 1/4" (6mm) **INSIDE** seam line, between inner small dots, using a long machine-stitch.

2. Using Guide for gathers (3), pull up gathering threads, matching dots. Secure thread ends.

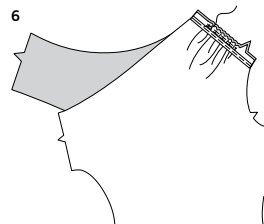
3. **GATHER** shoulder edge of Back (2) between inner small dots in the same manner as front.



4. With right sides together, pin back to front at shoulders, matching notches and dots. Baste.

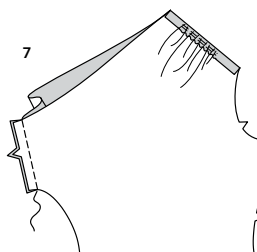


5. To stay, on inside, pin purchased twill tape to front shoulder seam allowance, centering long edge of tape along seamline, having ends even. Baste.



6. Stitch along seamline, through all thicknesses. Press seams open.

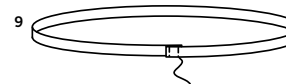
## NECK FINISHING



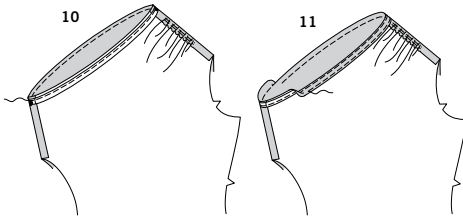
7. Stitch front to back at upper left side seam.



8. Cut one piece of elastic following Elastic guide for neck (4). Transfer markings.



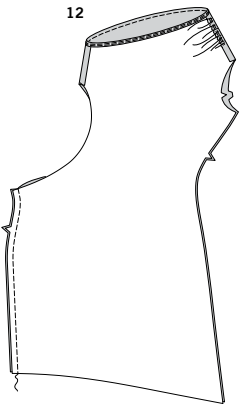
9. Lap ends of elastic, matching large dots. Sew lapped edges with several rows of machine-stitching.



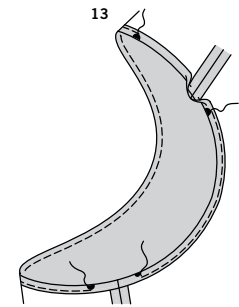
**10. Stitch/Serge** elastic to WRONG side of neck edge, lining up front and back sections and large dots, placing small dot at shoulder seam, having one long edge along seam allowance. Stitch close to outer edge, stretching elastic while stitching.

**11. Turn** neck edge to INSIDE, encasing the elastic. Stitch again over first stitching, stretching the elastic as you sew, using a conventional machine.

#### WAIST CASING



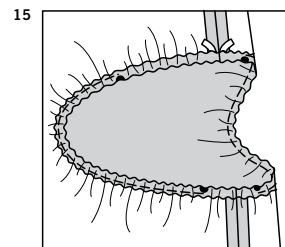
**12. Stitch** front to back at lower left side seam, leaving curved edge free. To keep elastic from getting stuck in the seam allowances as it's inserted, use fusible web or machine-basting to anchor them to dress within the casing area. Be sure to remove basting after casing is finished.



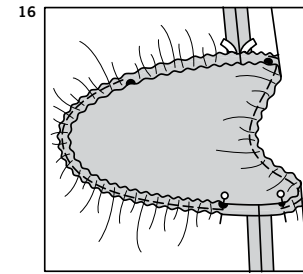
**13. Press** 5/8" (1.5cm) on waist edge to INSIDE, forming casing. Press under 1/4" (6mm) on raw edge. Stitch close to lower edge of casing between small and large dots on front and between large dots in back.



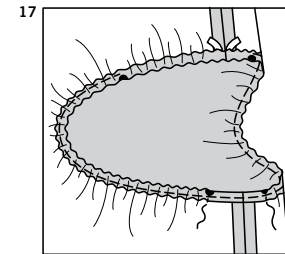
**14. Cut** one piece of elastic following Elastic guide for front and back (5). Transfer markings.



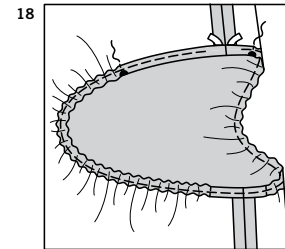
**15. Insert** front section of elastic through upper opening in front casing, with back section exiting at upper opening on back, matching large and small dots, placing side front/side back markings at lower side seam.



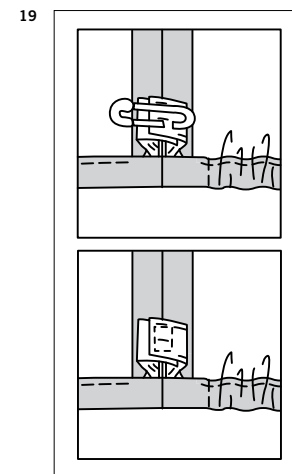
**16. Pin** elastic at side front/side back markings at lower side seam, matching small and large dots.



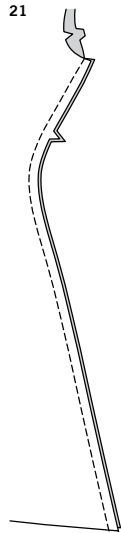
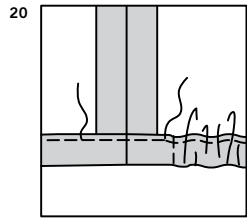
**17. Smooth** casing flat at lower side seam between small and large dots. Stitch across dots to hold elastic in place. Stitch close to lower edge of casing between small and large dots, being careful not to catch elastic.



**18. Smooth** casing flat at upper side seam between large dots. Stitch across dots to hold elastic in place. Stitch close to inner edge of casing between large dots, leaving an opening for ends of elastic, as shown, being careful not to catch elastic.



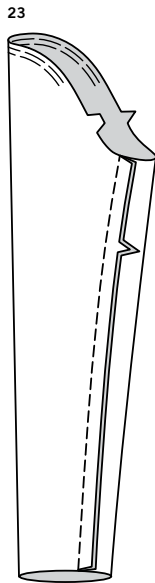
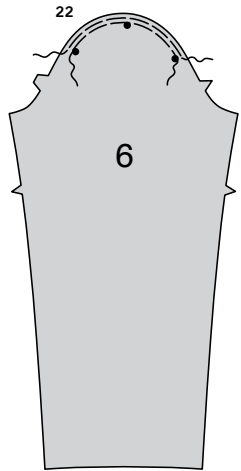
**19. Lap** side front and side back edges of elastic, matching seamlines. Hold with safety pin. Sew lapped edges of elastic with several rows of machine-stitching.



- 20.** Stitch opening in casing, stretching elastic while stitching.  
**TIP:** To secure elastic so it won't twist in wearing, stitch through all thicknesses of casing in the groove of each seam.

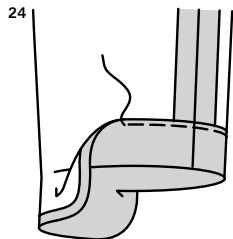
#### SLEEVE A, B

- 21.** Stitch front to back at right side seam.

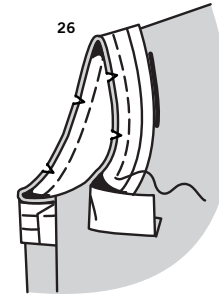
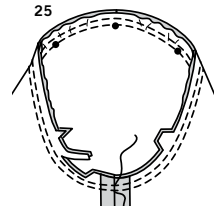


- 22.** EASESTITCH cap of Sleeve (6) between outer dots.

- 23.** Stitch sleeve seam.



- 24.** Turn up 1-1/4" (3.2cm) hem on lower edge of sleeve.  
 Press under 1/4" (6mm) on raw edge.  
 Stitch close to inner pressed edge.

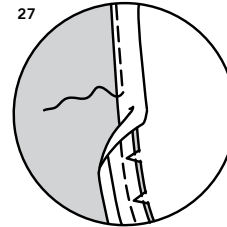


- 25.** With right sides together, pin sleeve into right armhole with center small dot at shoulder seam, matching underarm seams, notches and remaining small dots. Adjust ease; baste. Stitch. Stitch again 1/8" (3mm) away in seam allowance. Trim close to second stitching. Press seam allowances toward sleeve.

#### ARMHOLE FACING C

**NOTE:** Trim away 1/4" (6mm) from armhole edges of front and back before stitching seams.

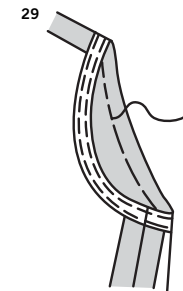
- 26.** Open out one edge of single fold bias tape.  
 With right sides together, pin tape to armhole edge, having crease 3/8" (1cm) from raw edge, turning under and lapping one end at underarm seam. Stitch in a 3/8" (1cm) seam. Trim seam to a scant 1/4" (6mm). Clip curves.



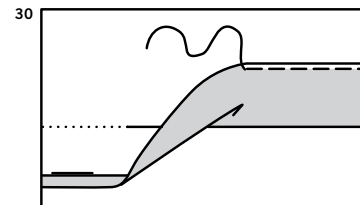
- 27.** UNDERSTITCH by pressing tape and seam away from dress, stitching through tape and seam allowances close to seam.



- 28.** Turn tape to INSIDE; press. Baste close to inner edge of tape.



- 29.** On OUTSIDE, top-stitch as basted.



#### HEM

- 30.** Turn up 1-1/4" (3.2cm) hem on lower edge of dress.  
 Press under 1/4" (6mm) on raw edge.  
 Stitch close to inner pressed edge.



# Congrats!

You've completed your sewing adventure

---

## SHARE YOUR LOOK



Post your pattern and tag us  
**@simplicity\_creative\_group** and **#simplicitypatterns**  
for a chance to be featured on our social media.

Look for more PDF patterns at [simplicity.com](https://www.simplicity.com)

Have a question or need help with your sewing project call us at  
1-888-588-2700



Simplicity ©2023 a division of IG Design Group Americas Inc. • Atlanta, GA 30342 USA [www.thedesigngroup.com](https://www.thedesigngroup.com) • All Rights Reserved. [www.simplicity.com](https://www.simplicity.com) • Made in the U.S.A. Fabriqué aux États-Unis.

To be used for individual private home use only and not for commercial or manufacturing purposes. • A usage privé seulement et non à des fins commerciales ou de production en série. • Para uso privado solamente, no se puede utilizar con propósitos de comercialización o de producción en serie.