

S9884

Simplicity®

1960s Vintage

Jiffy®

2-3 main
pattern pieces
Easy Cut
Easy SewDesigned and
printed in USA.

Very Easy

MISSES' DRESS IN TWO LENGTHS

Suggested Fabrics: Brocade, Cottons and Blends, Crepe, Linen, Metallic Brocade and Crepes, Matelasse, Ottoman, Silks, Synthetics and Blends, Velvet, Velveteen. **View 1** also in Eyelash Metallics, Satin. **Views 2, 3** also in Double Knits, Lightweight Wools and Blends. Wool Crepe. **Interfacing:** Lightweight Sew-in.

Notions: **View 1, 2, 3:** 22" (56cm) zipper, bias seam binding (optional). **Also for View 3:** 3 yds. (2.7m) of 3" (8cm) ribbon.

Sizes	6	8	10	12	14	16	18	20	22	24
European	32	34	36	38	40	42	44	46	48	50

BODY MEASUREMENTS: Select pattern size based on body measurements

Bust	30½	31½	32½	34	36	38	40	42	44	46	Ins.
Waist	23	24	25	26½	28	30	32	34	37	39	"
Hip-9" below waist	32½	33½	34½	36	38	40	42	44	46	48	"
Back-neck to waist	15½	15¾	16	16¼	16½	16¾	17	17¼	17½	17¾	"

Interfacing - Views 1, 2, 3 - 20" - ½ yd.

View 1 Dress	45**	3%	3%	3%	3%	3%	3%	3%	3%	3%	Yds.
	60**	2%	2%	2%	2%	2%	2%	2%	2%	2%	"

Views 2 & 3 Dress

	45**	2	2%	2%	2%	2%	2%	2%	2%	2%	Yds.
	60**	1%	1%	1%	1%	1%	1%	1%	1%	1%	"

FINISHED GARMENT MEASUREMENTS (Includes Design and Wearing Ease)

View 1, 2, 3 Bust	33½	34½	35½	37	39	41	43	45	47	49	Ins.
View 1, 2 Waist	30	31	32	33½	35½	37½	39½	41½	43½	45½	"
View 3 Waist	33½	34½	35½	37	39	41	43	45	47	49	"
View 1, 2, 3 Hip	36½	37½	38½	40	42	44	46	48	50	52	"
Width, lower edge											
View 1 Dress	44%	45%	46%	48¼	50¼	52¼	54¼	56¼	58¼	60¼	Ins.
View 2, 3 Dress	40%	41%	42%	44¼	46¼	48¼	50¼	52¼	54¼	56¼	"
Finished back length from base of neck											
View 1 Dress	54%	54%	55	55¼	55½	55¾	56	56¼	56½	56¾	Ins.
View 2, 3 Dress	38%	38%	39	39¼	39½	39¾	40	40¼	40½	40¾	"

*with nap **without nap

Très Facile

ROBE EN DEUX LONGUEURS POUR JEUNES FEMMES

Tissus Conseillés: Brocart, Cotons et cotonnades, Crêpe, Toile de lin, Brocart métallisé et Crêpes, Matelassé, Ottoman, Soies, Tissus synthétiques et mélanges de fibres synthétiques, Velours, Velours de coton. **Modèle 1** aussi en Tissus à fil de laine fantaisie métallisés, Satin. **Modèles 2, 3** aussi en Tricot doubles, Laines légères et mélanges de laine. Crêpe de laine. **Entoilage:** léger à coudre.

Mercerie: **Modèles 1, 2, 3:** fermeture à glissière de 56cm, extra-fort en biais (facultatif). **Aussi pour le Modèle 3:** 2.7m de ruban de 8cm.

Tailles	6	8	10	12	14	16	18	20	22	24
Françaises	34	36	38	40	42	44	46	48	50	52
Européen	32	34	36	38	40	42	44	46	48	50

MESURES DU CORPS: Choisissez la taille du patron basée sur les mesures du corps

Poitrine	78	80	83	87	92	97	102	107	112	117	cm
Taille	58	61	64	67	71	76	81	87	94	99	"
Hanches (23cm au-dessous de la taille)	83	85	88	92	97	102	107	112	117	122	cm
Dos du cou à la taille	39.5	40	40.5	41.5	42	42.5	43	44	44	44.5	"
Entoilage - Modèles 1, 2, 3 - 51cm - 0.5m											

Modèle 1 Robe	115cm*	3.1	3.1	3.1	3.1	3.1	3.1	3.1	3.2	3.2	3.2	m
	150cm*	1.9	1.9	1.9	2.1	2.1	2.1	2.4	3.0	3.0	3.0	"

Modèles 2 et 3 Robe

	115cm*	1.8	1.9	2.1	2.1	2.1	2.2	2.5	2.5	2.5	2.6	m
	150cm*	1.5	1.5	1.5	1.5	1.5	1.5	1.5	1.6	1.6	1.7	"

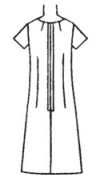
MESURES DES VÊTEMENTS FINI (Motif et aisance de port compris)

Modèle 1, 2, 3 Poitrine	85	88	90	94	99	104	109	114	119	124	m
Modèle 1, 2 Taille	76	79	81	85	90	95	100	105	110	116	"
Modèle 3 Taille	85	88	90	94	99	104	109	114	119	124	"
Modèle 1, 2, 3 Hanches	93	95	98	102	107	112	117	122	127	132	"
Largeur à l'ourlet											
Modèle 1 Robe	114	116	119	123	128	133	138	143	148	153	m
Modèles 2, 3 Robe	104	106	109	112	117	123	128	133	138	143	"
Longueur finie - dos, votre nuque à l'ourlet											
Modèle 1 Robe	138	139	140	140	141	142	142	143	144	144	m
Modèles 2, 3 Robe	98	98	99	100	100	101	102	102	103	104	"

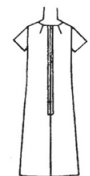
*avec sens **sans sens



1

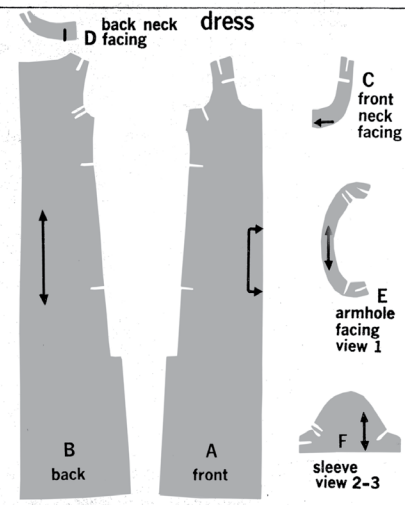
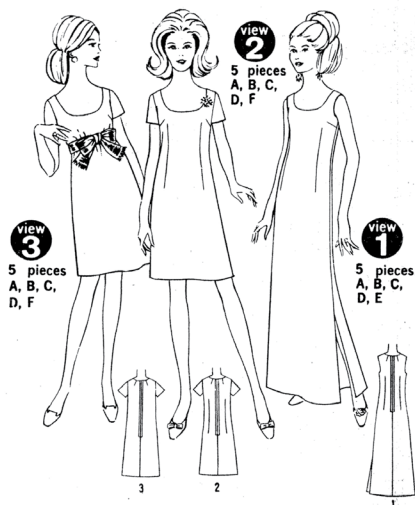


2



3

select your pattern pieces according to the view you have chosen 6 pieces given



1. Prepare your pattern

Select the pattern pieces for the view you plan to make from the box to the left. Do not cut away margins.

This pattern is made to body measurements with ease allowed for style, fit and comfort. Check your back waist and dress length. If necessary, alter the pattern before placing it on fabric. Lengthening and shortening lines are indicated on pattern.

TO LENGTHEN: Cut pattern between printed lines. Place paper underneath. Spread pattern the necessary amount and pin to paper.

TO SHORTEN: At the printed line, pin a pleat half the amount to be shortened. (i.e. $\frac{1}{2}$ " deep to shorten 1".)

See Simplicity Sewing Book for other pattern alterations.

2. Prepare your fabric

Press fabric. Unless fabric is pre-shrunk, shrink before cutting.

STRAIGHTEN ENDS: Clip one selvage and tear fabric or pull a crosswise thread and cut across fabric.

STRAIGHTEN UNEVEN GRAIN: Pull fabric on the bias in opposite direction until crosswise threads are straight and squared with selvages. This cannot be done on permanent finish fabrics.

to use your Simplicity Pattern

Read all directions carefully before beginning to work

3. Know your pattern markings

STRAIGHT GRAIN: Place an even distance from selvage or a straight thread.

FOLD GRAIN: Place on fold of fabric.

CUTTING LINE

LENGTHENING AND SHORTENING LINES

STITCHING LINES: For darts, seams, etc.

SEAM ALLOWANCE: $\frac{5}{8}$ " unless otherwise stated.

NOTCHES: Blocked in for easier cutting; match notches with same numbers.

4. Laying out and cutting your pattern

Circle cutting layout for View, Size and Fabric width.

FOR DOUBLE THICKNESS: Fold fabric with RIGHT side INSIDE and place pattern on WRONG side of fabric.

FOR SINGLE THICKNESS: Place pattern on RIGHT side of fabric.

FOR NAP OR ONE WAY DESIGN FABRICS: Use "with nap" cutting layout.

Before cutting, place all pattern pieces on fabric, following cutting layouts. Margins may be overlapped when placing pattern on fabric. When duplicate pattern pieces are cut separately, the second piece is reversed and shown as a white outline.

Cut thru pattern and fabric on cutting lines; cut notches out from cutting lines. Margins will fall away as you cut.

5. Mark your fabric

Before removing pattern, transfer markings to WRONG side of fabric with tracing wheel and dressmaker's tracing paper.

FOR SINGLE THICKNESS: Place one sheet of tracing paper face up under WRONG side of fabric.

FOR DOUBLE THICKNESS: Place one sheet of tracing paper face up under fabric; place another sheet face down under pattern.

See Simplicity Sewing Book for "chalk marking" and Tailor's-tacks.

Do not remove pattern from fabric until you are ready to sew.

6. Sewing your garment

READ DIRECTIONS on pattern pieces as you work.

STAY-STITCH: Machine-stitch thru single thickness of fabric to prevent stretching of bias or curved edges—done on seam line or $\frac{1}{8}$ " from seam line within seam allowance. Stay-stitching is shown only the first time a section of garment is illustrated.

PIN or BASTE SEAMS: Match notch 1 to 1, 2 to 2, etc. (Baste by hand or machine using a long stitch.)

STITCH SEAMS: In direction shown by arrows on pattern.

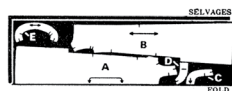
PRESS SEAMS: Open, unless otherwise stated. See Simplicity Sewing Book for additional sewing details.

Black area represents fabric

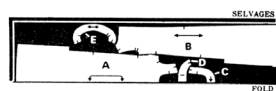
GENERAL NOTE: When pattern pieces extend beyond fold of fabric, cut out all pieces except pieces that extend; then open out fabric and on single thickness cut extending pieces on right side of fabric in position shown.

dress

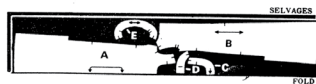
44" 45" fabric
without nap
sizes 8, 10, 12



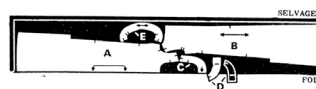
44" 45" fabric
without nap
size 14
40" 41" fabric
without nap
sizes 8, 10



44" 45" fabric
without nap
size 16
40" 41" fabric
without nap
sizes 12, 14



40" 41" fabric
without nap
size 16
35" 36" fabric
without nap
sizes 8, 10, 12



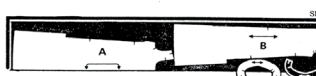
35" 36" fabric
with nap
sizes 8, 10, 12
40" 41" fabric
with nap
all sizes



35" 36" fabric
with or
without nap
size 14

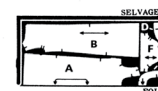


35" 36" fabric
with or
without nap
size 16

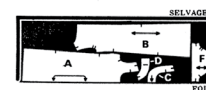


dress

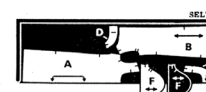
44" 45" fabric
without nap
sizes 8, 10, 12



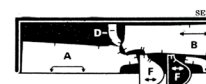
44" 45" fabric
without nap
size 14
40" 41" fabric
without nap
sizes 8, 10



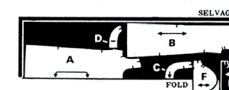
44" 45" fabric
without nap
size 16
40" 41" fabric
without nap
size 12



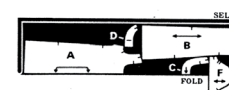
40" 41" fabric
without nap
sizes 14, 16
35" 36" fabric
without nap
sizes 8, 10, 12



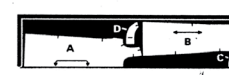
40" 41" fabric
with nap
sizes 8, 10, 12, 14



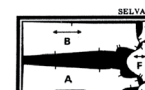
40" 41" fabric
with nap
size 16
35" 36" fabric
with nap
sizes 8, 10, 12



35" 36" fabric
with or
without nap
sizes 14, 16



54" fabric
without nap
all sizes



interfacing

NOTE: Cut 1 on fold by C and 2 by D, less $\frac{3}{8}$ " on long unnotched edge.

25" fabric
all sizes



32" 35" 36" fabric
all sizes



7384 sewing directions

Shaded area is right side of fabric

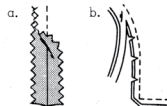
NOTE: Stitch $\frac{3}{8}$ " seams, unless otherwise stated, matching same numbered notches.

NOTE: For heavy fabric, bias seam binding may be used to encase inner edges of facings.

NOTE: When pinning interfacings in place, trim outer corners of interfacings diagonally, as shown in drawings.

suggested seam finishes

a-Pink seams.



b-For enclosed seams, trim seams and corners; clip curves.

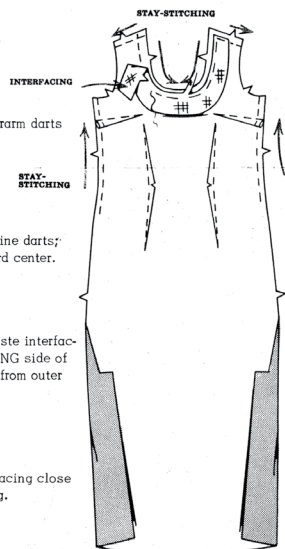


dress

NOTE: It may be necessary to stitch a deeper side seam at armhole edge, tapering from normal seam allowance at waistline.

UNIT 1
front

Make darts.



Press underarm darts down.

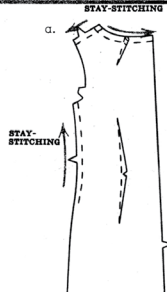
Clip waistline darts; press toward center.

Machine-baste interfacing to WRONG side of front $1\frac{1}{2}$ " from outer edges.

Trim interfacing close to stitching.

UNIT 2
back

a-Make darts; clip waistline darts.

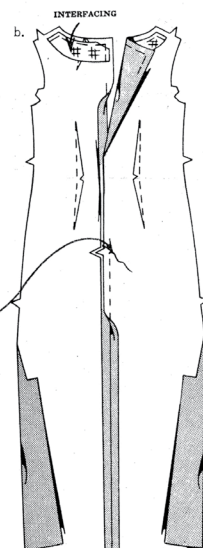


Press all darts toward center.

b-Machine-baste interfacing to WRONG side of back $1\frac{1}{2}$ " from outer edges.

Trim interfacing close to stitching.

Stitch center back seam to notch.



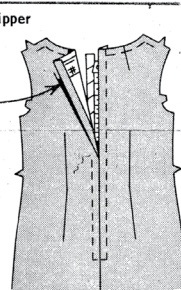
zipper

Press under $5/8$ " on back opening edges.

Pin closed zipper under opening edges with tab end $1/2$ " below neckline seam line, having opening edges meet at center of zipper.

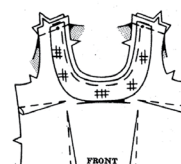
Baste.

Stitch, using a zipper foot.



shoulder seams

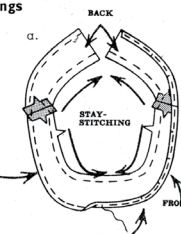
Stitch front to back at shoulder seams, easing back to fit between small dot and notch.

UNIT 3
front and back neck facings

a-Stitch shoulder seams of facing.

Stitch $1/4$ " from long unnotched edge.

Press under edge along stitching and stitch.

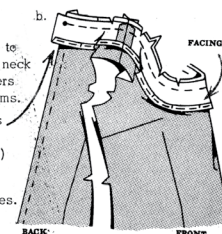


b-With RIGHT sides together, pin facing to neck edge, matching centers small dots and seams.

(Back facing extends $5/8$ " beyond center back edges of dress.)

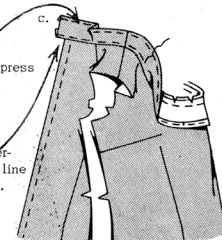
Stitch neck edge.

Trim seam; clip curves.



c-Press facing out; press seam toward facing.

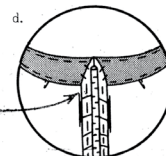
Facing side up, understitch close to seam line thru facing and seam.



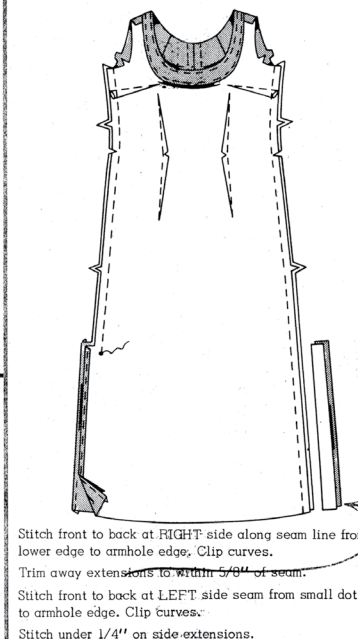
ENLARGED DETAIL

d-Press facing to INSIDE, pressing under and slip-stitching center back edges.

Sew hook and eye at neck edge.



side seams



Stitch front to back at RIGHT side along seam line from lower edge to armhole edge. Clip curves.

Trim away extensions to within $5/8$ " of seam.

Stitch front to back at LEFT side seam from small dot to armhole edge. Clip curves.

Stitch under $1/4$ " on side extensions.

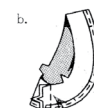
UNIT 4
armhole facings

a-Stitch $1/4$ " from long unnotched edge of facing.

Press under edge along stitching and stitch.

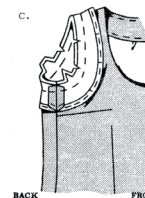


b-Stitch ends.



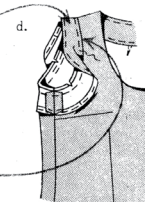
c-With RIGHT sides together, stitch facing to armhole edge, matching seams.

Trim seam; clip curves.



d-Press facing out; press seam toward facing.

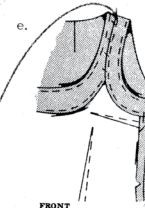
Facing side up, understitch close to seam line thru facing and seam.



e-Press facing to INSIDE.

Slip-stitch neck and armhole facings together at shoulders.

Tack armhole facings to side seams.



hem and slit opening

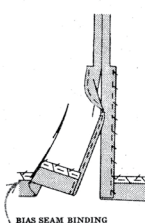
Mark length.

Press up hem along marking.

Mark depth of hem; trim evenly.

Stitch one edge of bias seam binding $1/4$ " over raw edge, (or stitch under $1/4$ " on raw edge).

Press LEFT side extensions to INSIDE along seam line, forming facings; slip-stitch.



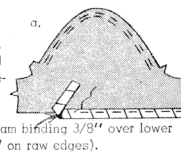
Printed in U.S.A.
© Copyright 1967 by Simplicity Pattern Co. Inc.

dress

Prepare dress same as view 1, see units 1 thru 3, stitch both side seams from lower edge to armhole edge. Omit reference to extensions.

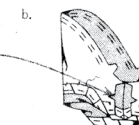
UNIT 4
sleeves

a-To ease top of sleeves, stitch along seam line and $1/4$ " INSIDE seam line between notches, using a long machine-stitch. Stitch one edge of bias seam binding $3/8$ " over lower edge (or stitch under $1/4$ " on raw edges).



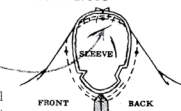
b-Stitch underarm seam.

Press up hem; slip-stitch.



stitching sleeve unit to dress

With RIGHT sides together, pin sleeve in armhole with center small dot at shoulder seam, matching underarm seams and remaining small dots. Pull up machine-stitching to fit.



Baste, easing in fullness. Stitch. Stitch $1/8$ " from first stitching. Trim seam close to stitching. Press seam toward sleeve, shrinking out fullness.

hem

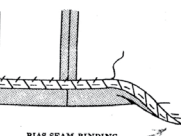
Mark length.

Press up hem.

Mark depth of hem; trim evenly.

Stitch one edge of bias seam binding $1/4$ " over raw edge (or stitch under $1/4$ " on raw edge).

Slip-stitch hem.

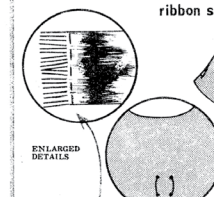


dress

Prepare dress same as view 1, see units 1 thru 3. Do not make waistline darts in front and back. When stitching side seams, stitch both side seams from lower edge to armhole edge. Omit reference to extensions.

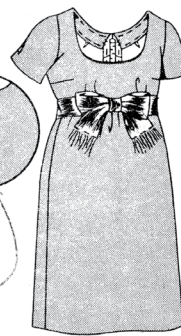
For sleeves, stitching sleeve unit to dress and hem, see view 2, unit 4.

ribbon sash



Machine-stitch $1\frac{1}{2}$ " from ends of ribbon. Pull out threads parallel to machine-stitching as far as stitching, forming fringe. Make thread carriers in front between small dots each side of center.

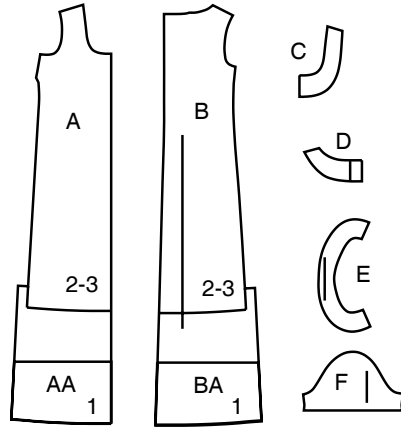
Slip sash thru carriers and tie into a bow at center front.



Simplicity®

Thank you for purchasing this Simplicity pattern.
We made every effort to provide you with a high quality product.

SUPPLEMENTAL CUTTING LAYOUTS



A- DRESS FRONT VIEWS 1, 2 & 3
AA- EXTENSION VIEW 1
B- DRESS BACK VIEWS 1, 2 & 3
BA- EXTENSION VIEW 1
C- FRONT NECK FACING
D- BACK NECK FACING
E- ARMHOLE FACING - VIEW 1
F- SLEEVE - VIEW 2 AND VIEW 3

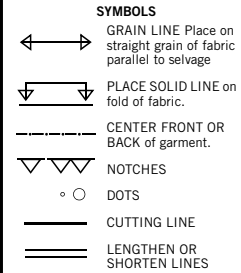

www.simplicity.com

info@simplicity.com


1-888-588-2700

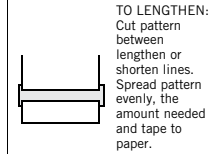
General Directions

The Pattern



SEAM ALLOWANCE: 5/8" (1.5cm) unless otherwise stated is included but not printed on MULTI-SIZE PATTERNS. Mark your size with colored felt tip pen. See chart on tissue for how to use MULTI-SIZE PATTERNS.

ADJUST IF NEEDED
Make adjustments before placing pattern on fabric.



TO LENGTHEN:
Cut pattern between lengthen or shorten lines. Spread pattern evenly, the amount needed and tape to paper.

TO SHORTEN:
At lengthen or shorten lines, make an even pleat taking up amount needed. Tape in place.

When lengthen or shorten lines are not given, make adjustments at lower edge of pattern.

Cutting/Marking

BEFORE CUTTING:

PRESS pattern pieces with a warm dry iron. PRE-SHRINK fabric by pre-washing washables or steam-pressing non-washables.

CIRCLE your cutting layout.

PIN pattern to fabric as shown in Cutting Layouts.

• FOR DOUBLE THICKNESS: Fold fabric with RIGHT sides together.

• FOR SINGLE THICKNESS: Place fabric RIGHT side up.

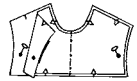
• FOR PILE, SHADED OR ONE WAY DESIGN FABRICS: Use "with nap" layouts

AFTER CUTTING:

Transfer markings to WRONG side of fabric before removing pattern. Use pin and chalk method or dressmaker's tracing paper and wheel.

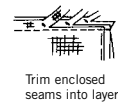
To Quick Mark:

- Snip edge of fabric to mark notches, ends of fold lines and center lines.
- Pin mark dots.

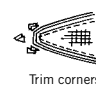


Sewing

- SEW garment following **Sewing Directions**.
- PIN or machine-baste seams matching notches.
- STITCH 5/8" (1.5 cm) seams unless otherwise stated.
- PRESS seams open unless otherwise indicated clipping when necessary so seams will lie flat.
- TRIM seams to reduce bulk, as shown below.



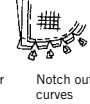
Trim enclosed seams into layers



Trim corners



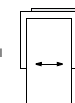
Clip inner curves



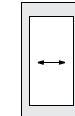
Notch outer curves

SPECIAL CUTTING NOTES

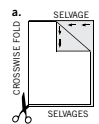
★ If layout shows a piece extending past fold, cut out all pieces except piece that extends.



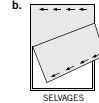
Open out fabric to single thickness. Cut extending piece on RIGHT side of fabric in position shown.



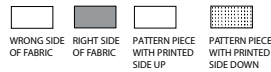
✱ Mark small arrows along both selvages indicating direction of nap or design. Fold fabric crosswise with RIGHT sides together, and cut along fold (a).



Turn one fabric layer around so arrows on both layers go in the same direction. Place RIGHT sides together (b).



Cutting Layouts

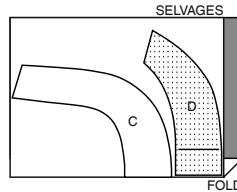


POSITION OF PATTERN PIECES MAY VARY SLIGHTLY ACCORDING TO YOUR PATTERN SIZE

INTERFACING 1 2 3

USE PIECES C, D

20" (51CM)
ALL SIZES

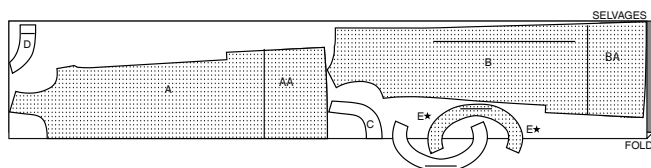


VIEW 1 DRESS

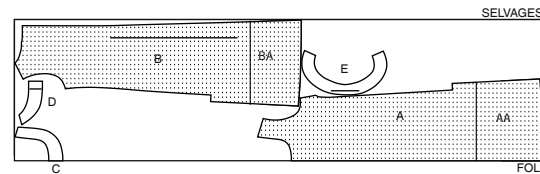
USE PIECES: A AA B BA C D E

NOTE: BEFORE YOU ALTER OR CUT, LAP AND TAPE TOGETHER PIECES A AND AA, B AND BA, MATCHING SYMBOLS. CUT AS ONE.

45" (115CM) WITH NAP
ALL SIZES



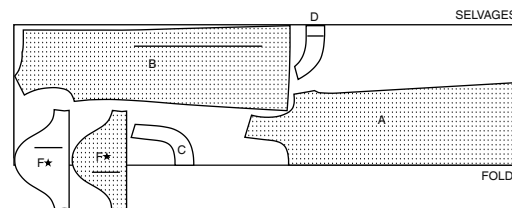
60" (150CM)
WITH NAP
ALL SIZES



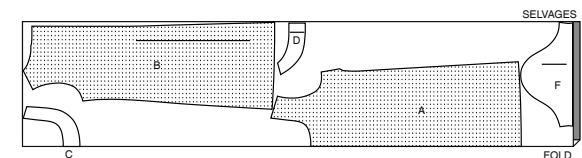
VIEW 2 OR 3 DRESS

USE PIECES A B C D F

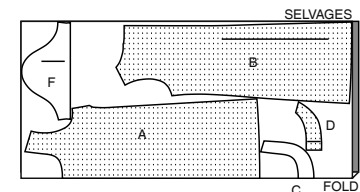
45" (115CM)
WITH NAP
SIZES 6 8 10 12 14 16



45" (115CM)
WITH NAP
SIZES 18 20 22 24



60" (150CM)
WITH NAP
ALL SIZES





Congrats!

You've completed your sewing adventure

SHARE YOUR LOOK



Post your pattern and tag us
@simplicity_creative_group and **#simplicitypatterns**
for a chance to be featured on our social media.

Look for more PDF patterns at [simplicity.com](https://www.simplicity.com)

Have a question or need help with your sewing project call us at
1-888-588-2700



Simplicity ©2023 a division of IG Design Group Americas Inc. • Atlanta, GA 30342 USA www.thedesigngroup.com • All Rights Reserved. www.simplicity.com • Made in the U.S.A. Fabriqué aux États-Unis.

To be used for individual private home use only and not for commercial or manufacturing purposes. • A usage privé seulement et non à des fins commerciales ou de production en série. • Para uso privado solamente, no se puede utilizar con propósitos de comercialización o de producción en serie.