

S9883

Simplicity

1960s Vintage



Jiffy

3 main pattern pieces
Easy Cut
Easy Sew



Designed and printed in USA.

Very Easy

Très Facile

MISSES' REVERSIBLE COAT

Suggested Fabrics: Broadcloth, Cottons and Blends, Cotton Damask, Cotton Homespun, Corduroy, Double Knits, Fleece, Linen, Looped Mohair, Mohair, Silks, Synthetics and Blends, Textured Silks, Tweeds, Velveteen, Wools and Blends, Worsteds.
Interfacing: Lightweight Sew-in.

Notions: Seam binding, purchased belt (optional).

Sizes	8	10	12	14	16	18	20	22	24	26
European	34	36	38	40	42	44	46	48	50	52

BODY MEASUREMENTS: Select pattern size based on body measurements

Bust	31½	32½	34	36	38	40	42	44	46	48	Ins.
Waist	24	25	26½	28	30	32	34	37	39	41½	"
Hip-9" below waist	33½	34½	36	38	40	42	44	46	48	50	"
Back-neck to waist	15¾	16	16¼	16½	16¾	17	17¼	17½	17¾	17¾	"

Coat or (Contrast) Coat Facing

45**	¾	¾	¾	¾	¾	¾	¾	¾	¾	¾	¾	Yds.
60**	2%	2%	2%	2%	2%	2%	2%	3	3%	3%	3%	"

Interfacing 20"- 1½ yds.

FINISHED GARMENT MEASUREMENTS (Includes Design and Wearing Ease)

Bust	45	46	47½	49½	51½	53½	55½	57½	59½	61½	Ins.
Waist	45	46	47½	49½	51½	53½	55½	57½	59½	61½	"
Hip	45	46	47½	49½	5½	53½	55½	57½	59½	61½	"
Width, lower edge											
Coat	45	46	47½	49½	5½	53½	55½	57½	59½	61½	Ins.
Finished back length from base of neck											
Coat	41¼	41½	41¾	42	42¼	42½	42¾	43	43¼	43½	Ins.

*with nap **without nap

MANTEAU RÉVERSIBLE POUR JEUNES FEMMES

Tissu Conseillés: Broadcloth, Cotons et cotonnades, Damas de coton, Tissu Homespun de coton, Velours côtelé, Tricotés doubles, Molleton, Toile de lin, Mohair bouclé, Mohair, Soies, Tissus synthétiques et mélanges de fibres synthétiques, Soies à texture, Tweeds, Velours de coton, Laines et mélanges de laine, Tissus de laine peignées. **Entoilage :** léger à coudre.

Mercerie: extra-fort, ceinture achetée (facultative).

Tailles	8	10	12	14	16	18	20	22	24	26
Françaises	36	38	40	42	44	46	48	50	52	54
Européen	34	36	38	40	42	44	46	48	50	52

MESURES DU CORPS: Choisissez la taille du patron basée sur les mesures du corps

Poitrine	80	83	87	92	97	102	107	112	117	122	cm
Taille	61	64	67	71	76	81	87	94	99	106	"
Hanches (23cm au-dessous de la taille)	85	88	92	97	102	107	112	117	122	127	cm
Dos du cou à la taille	40	40.5	41.5	42	42.5	43	44	44	44.5	44.5	"

Manteau ou parementure (contrastant) de manteau

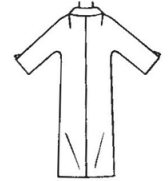
115cm*	3.0	3.0	3.1	3.1	4.1	4.1	4.1	4.2	4.2	4.3	m
150cm*	2.4	2.4	2.4	2.4	2.4	2.5	2.6	2.7	2.9	3.0	"

Entoilage 51cm- 1.3m

MESURES DES VÊTEMENTS FINI (Motif et aisance de port compris)

Poitrine	114	117	121	126	131	136	141	146	151	156	cm
Taille	114	117	121	126	131	136	141	146	151	156	"
Hanches	114	117	121	126	131	136	141	146	151	156	"
Largeur à l'ourlet											
Manteau	114	117	121	126	131	136	141	146	151	156	cm
Longueur finie – dos, votre nuque à l'ourlet											
Manteau	105	105	106	107	107	108	109	109	110	110	cm

*avec sens **sans sens

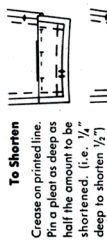


AUTHENTIC VINTAGE PATTERN REPRODUCTION

INCLUDES ADDITIONAL SIZE OPTIONS AND CUTTING LAYOUTS

HOW TO USE YOUR SIMPLICITY PATTERN

- 1. SELECT THE PATTERN PIECES** for the view you are making. These pieces are listed in the box to the right.
- 2. PRESS THE PATTERN PIECES.**
- 3. COMPARE YOUR BODY MEASUREMENTS** with those on back of the envelope.
- 4. IF ALTERATIONS ARE NECESSARY,** they should be made in the pattern before placing on fabric. (Caution: In addition to body measurements, ease is allowed in the pattern for garment style and comfortable wearing.) Pattern pieces show where to make simple alterations such as:



For Children's Wear, alter at lower edge except in shorts and slacks, etc., when crotch needs alterations, in which case alter above the crotch.

See the **Simplicity Sewing Book** for other alterations.

5. PREPARE FABRIC. Press creases out of fabric. Unless fabric is pre-shrunk, sponge or shrink before cutting.

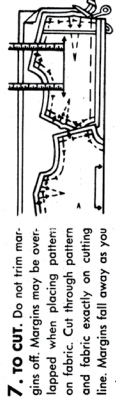
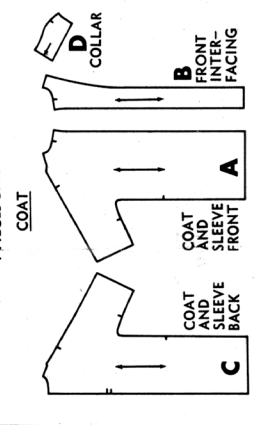
To Straighten End. Slip selvage and pull

LIST OF PIECES

SELECT YOUR PATTERN PIECES, SEE CUTTING LAYOUTS AND NOTES

COAT - A, B, C, D

4 PIECES GIVEN

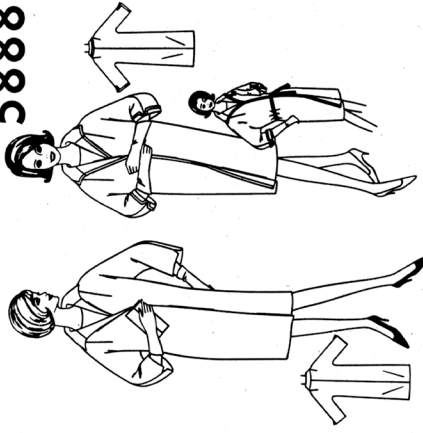


SEWING DIRECTIONS

- 1. READ INSTRUCTIONS** printed on each pattern piece as you work.
- 2. WORK IN UNITS** according to the sewing directions.
- 3. STAY-STITCHING** is a line of regular machine-stitching (in one thickness of fabric) on, or close to the seam line within the seam allowance. It prevents stretching. Stay-stitching will be shown only the first time a section of garment is illustrated in the instructions.

Simplicity PRIMER

Guide for Cutting - Sewing - Detailed Dressmaking 5888



- 4. SEAM ALLOWANCE** is 5/8" unless otherwise stated.
- 5. TO JOIN SEAMS,** match notches with same numbers, 1 to 1, 2 to 2, etc.
- 6. STITCHING DIRECTIONS** are shown by arrows on printed seam lines. Press each seam before it is placed on fabric. If a seam allowance is not indicated, it was stitched. Note: We suggest machine-basting, using longest machine stitch.

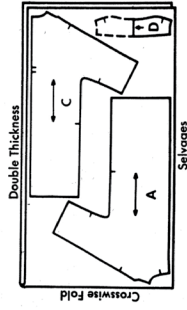
THE SIMPLICITY SEWING BOOK featuring the **Simplicity Unit System of Sewing is now on sale.**

Cutting Layouts

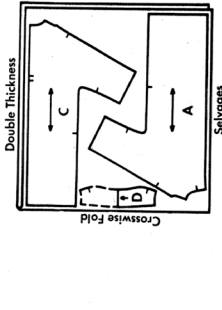
Coat Or Coat Facing

NOTE: Cut 1 D.

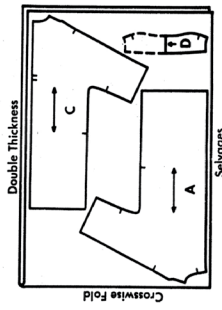
35" 36" Fabric Without Nap
All Sizes



44" 45" Fabric Without Nap
Sizes 10, 12, 14, 16

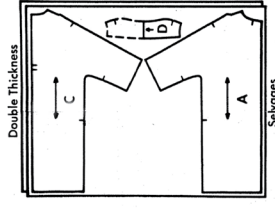


44" 45" Fabric Without Nap
Size 18



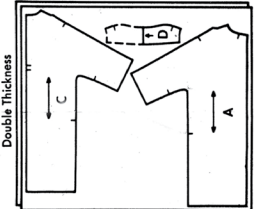
54" Fabric With or Without Nap
Sizes 10, 12

NOTE: For nap or one way design fabric, cut 2 pieces of fabric the place right sides together, with nap direction.



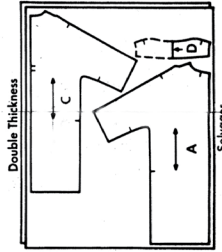
54" Fabric With Nap
Sizes 14, 16

NOTE: For nap or one way design fabric, cut 2 pieces of fabric the place right sides together, with nap direction.



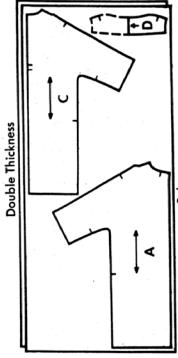
54" Fabric With Nap
SIZE 18
44" 45" Fabric With Nap
Sizes 10, 12, 14, 16

NOTE: For nap or one way design fabric, cut 2 pieces of fabric, then place right sides together with nap or design running in the same direction.

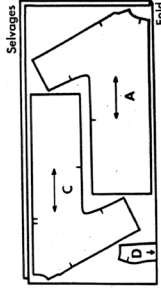


44" 45" Fabric With Nap
SIZE 18
35" 36" Fabric With Nap
All Sizes

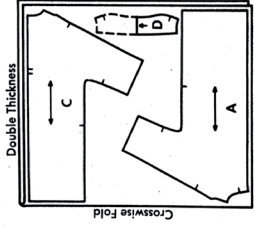
NOTE: For nap or one way design fabric, cut 2 pieces of fabric, then place right sides together with nap or design running in the same direction.



60" Fabric Without Nap
Sizes 10, 12, 14

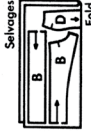


54" Fabric Without Nap
SIZES 14, 16, 18
60" Fabric Without Nap
SIZES 16, 18



COAT INTERFACING

25" 32" 35" 36" Fabric
All Sizes



NOTE: Piece B as shown, allowing for seam.

8. MARK FABRIC. Construction details must be marked on the fabric. Mark center front and back with a clip at top and bottom. **Tailor's Tacks.** Use long double thread without knot. Take 2 small



stitches thru pattern and both fabric layers, leaving long loop. Cut top loops and remove pattern. Separate fabric, clip threads between fabric layers, leaving thread tufts on both layers.

TRACING WHEEL AND DRESS-MAKER'S TRACING PAPER. Markings should be made on wrong side of fabric. Use ruler to guide straight lines; mark curves freehand.

For doubled fabric: lay one piece of tracing paper face up under fabric; a second piece, face down directly under pattern. Do not remove all pins.

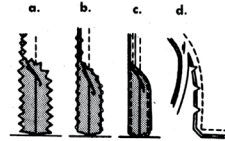
For single thickness: lay one piece of tracing paper face up under the wrong side of fabric. **Do not remove pattern until ready to work on each piece.**

5888

SHADED AREA IS RIGHT SIDE OF FABRIC

SUGGESTED SEAM FINISHES

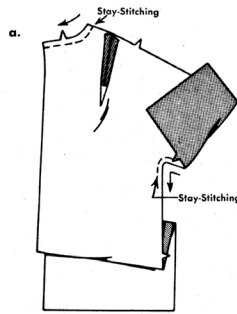
- a—Pink seams.
- b—Overcast separately.
- c—Turn in edges 1/8" and stitch separately.
- d—For enclosed seam, trim seam and corners; clip curves.



NOTE: When pinning interfacing sections in place, trim outer corners of interfacing diagonally, as shown in drawings.
NOTE: Coat may be made with or without top-stitching.

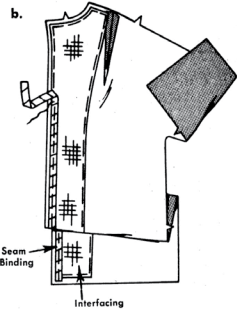
COAT

UNIT 1 - COAT AND SLEEVE FRONT



a—To make dart, on **INSIDE**, fold along solid line. Stitch along broken line. Press dart toward center.

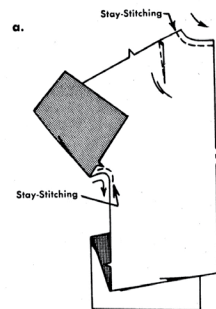
Trim dart; press open.



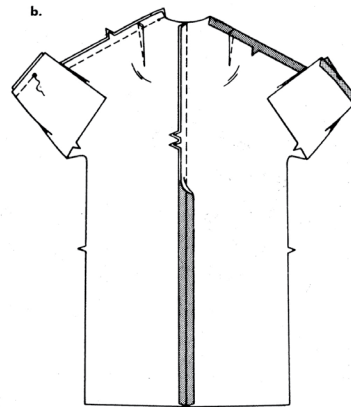
b—Machine-baste interfacing (B) to **WRONG** side of front, 1/2" from outer edges. Trim interfacing close to stitching. Sew inner edge in place with long running stitches.

Baste center of straight seam binding along front seam line, over interfacing, as shown.

UNIT 2 - COAT AND SLEEVE BACK AND SEAMS



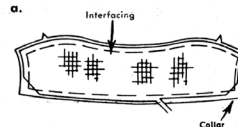
a—Make dart; press toward center.



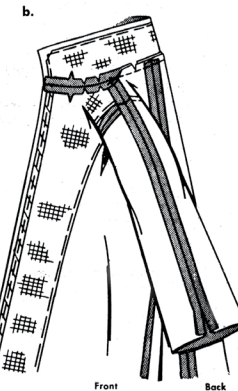
b—Join center back seam.

Pin front unit to back unit at shoulder seams, matching small and medium dots ●, easing back to fit between small dot ● at neck edge and notch. Stitch from neck edge to medium dot ● at lower edge of sleeve. Press seam open, pressing under opening edges below medium dots ● along seam lines.

UNIT 3 - COLLAR (UNDER SECTION)



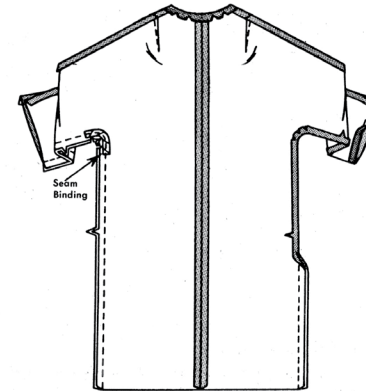
a—Machine-baste interfacing to **WRONG** side of one collar section, 1/2" from raw edges. Trim interfacing close to stitching.



b—Clip coat neck edge to stay-stitching.

With **RIGHT** sides together, pin collar to coat neck edge, matching centers back and small dots ●. Baste. Stitch seam. Trim seam; clip curves. Press seam open.

UNDERARM SEAMS AND LOWER EDGES OF SLEEVES



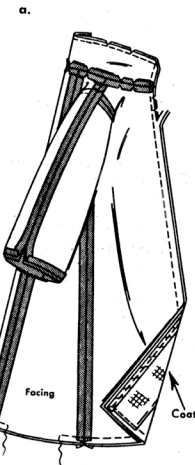
Pin front unit to back unit at underarm seams.

To reinforce curve at underarm, baste center of straight seam binding along seam line, as shown.

Stitch entire underarm seams; clip curves. (Do not clip seam binding.)

Press under 5/8" on lower edge of sleeve.

UNIT 4 - FACING AND COLLAR (UPPER SECTION)

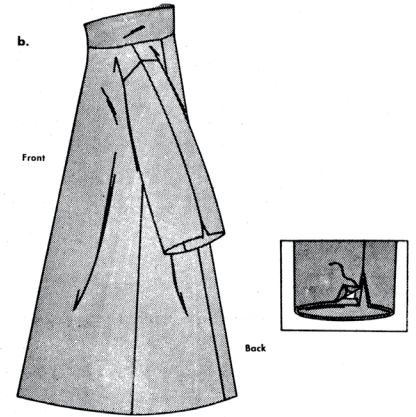


a—Prepare facing and remaining collar section same as for coat, omitting interfacing.

With **RIGHT** sides together, pin facing and collar to coat and collar, matching centers, seams, small and medium dots ●, having raw edges even.

Stitch front, collar and lower edges, leaving an opening in lower edge to turn, as shown.

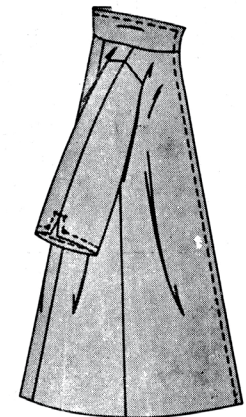
Trim seam and corners.



b—Turn **RIGHT** side out; press. On **INSIDE**, tack neck seams together. Slip-stitch lower opening edges together.

Slip-stitch sleeve edges together.

TOP-STITCHING



Top-stitch 5/8" from front and collar edges.

Top-stitch 5/8" from sleeve edges squaring stitching thru small dots ●, as shown.

Lower edges of sleeves may be turned back, forming cuffs.

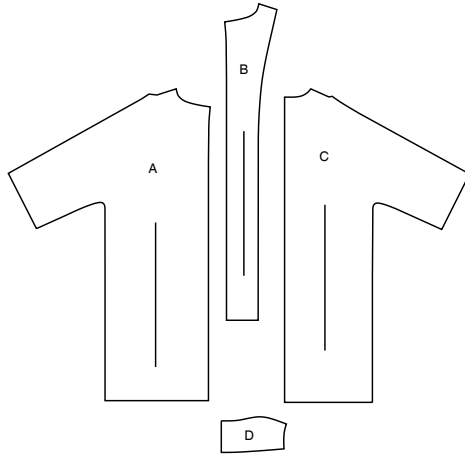
A purchased belt may be worn at waistline.

Simplicity®

Thank you for purchasing this Simplicity pattern.
We made every effort to provide you with a high quality product.

SUPPLEMENTAL CUTTING LAYOUTS

4 PIECES



A COAT AND SLEEVE FRONT
B FRONT INTERFACING
C COAT AND SLEEVE BACK
D COLLAR

The Pattern General Directions Cutting/Marking

SYMBOLS

- GRAIN LINE: Place on straight grain of fabric parallel to selvage
- PLACE SOLID LINE on fold of fabric.
- CENTER FRONT OR BACK of garment.
- NOTCHES
- DOTS
- CUTTING LINE
- LENGTHEN OR SHORTEN LINES

ADJUST IF NEEDED

Make adjustments before placing pattern on fabric.

TO LENGTHEN: Cut pattern between lengthen or shorten lines. Spread pattern evenly, the amount needed and tape to paper.

TO SHORTEN: At lengthen or shorten lines, make an even pleat taking up amount needed. Tape in place.

When lengthen or shorten lines are not given, make adjustments at lower edge of pattern.

BEFORE CUTTING:

PRESS pattern pieces with a warm dry iron. PRE-SHRINK fabric by pre-washing washables or steam-pressing non-washables.

CIRCLE your cutting layout.

PIN pattern to fabric as shown in Cutting Layouts.

- FOR DOUBLE THICKNESS: Fold fabric with RIGHT sides together.
- FOR SINGLE THICKNESS: Place fabric RIGHT side up.
- FOR PILE, SHADED OR ONE WAY DESIGN FABRICS: Use "with nap" layouts

AFTER CUTTING:

Transfer markings to WRONG side of fabric before removing pattern. Use pin and chalk method or dressmaker's tracing paper and wheel.

To Quick Mark:

- Snip edge of fabric to mark notches, ends of fold lines and center lines.
- Pin mark dots.

Sewing

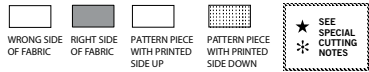
- SEW garment following Sewing Directions.
- PIN or machine-baste seams matching notches.
- STITCH 5/8" (1.5 cm) seams unless otherwise stated.
- PRESS seams open unless otherwise indicated clipping when necessary so seams will lie flat.
- TRIM seams to reduce bulk, as shown below.

Trim enclosed seams into layers
Trim corners
Clip inner curves
Notch outer curves

SPECIAL CUTTING NOTES

- If layout shows a piece extending past fold, cut out all pieces except piece that extends.
- Open out fabric to single thickness. Cut extending piece on RIGHT side of fabric in position shown.
- Mark small arrows along both selvages indicating direction of nap or design. Fold fabric crosswise with RIGHT sides together, and cut along fold (a).
- Turn one fabric layer around so arrows on both layers go in the same direction. Place RIGHT sides together (b).

Cutting Layouts

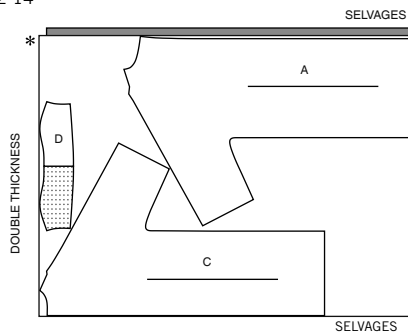


POSITION OF PATTERN PIECES MAY VARY SLIGHTLY ACCORDING TO YOUR PATTERN SIZE

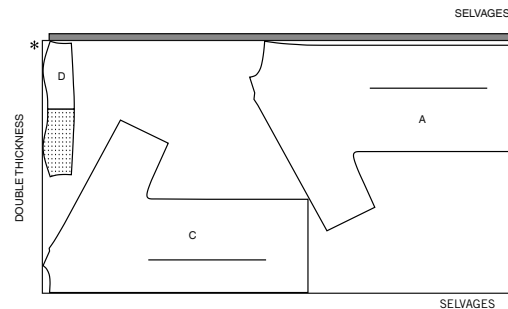
COAT OR (CONTRAST) COAT FACING

USE PIECES A C D
CUT ONE OF PIECE D

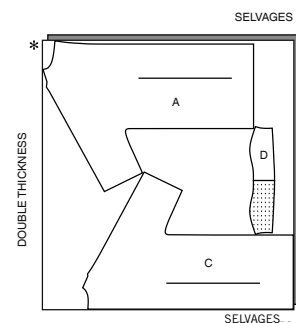
45" (115CM)
WITH NAP
SIZES 8 10 12 14



45" (115CM)
WITH NAP
SIZES 16 18 20
22 24 26



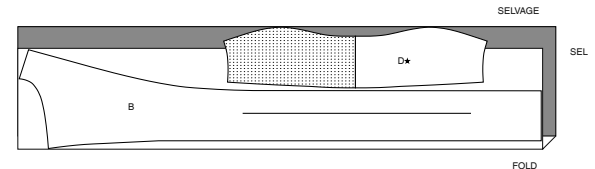
60" (150CM)
WITH NAP
ALL SIZES



INTERFACING

USE PIECES B D

20" (51CM)
ALL SIZES





Congrats!

You've completed your sewing adventure

**SHARE
YOUR** LOOK



Post your pattern and tag us
@simplicity_creative_group and **#simplicitypatterns**
for a chance to be featured on our social media.

Look for more PDF patterns at [simplicity.com](https://www.simplicity.com)

Have a question or need help with your sewing project call us at
1-888-588-2700



Simplicity ©2023 a division of IG Design Group Americas Inc. • Atlanta, GA 30342 USA www.thedesigngroup.com • All Rights Reserved. www.simplicity.com • Made in the U.S.A. Fabriqué aux États-Unis.

To be used for individual private home use only and not for commercial or manufacturing purposes. • A usage privé seulement et non à des fins commerciales ou de production en série. • Para uso privado solamente, no se puede utilizar con propósitos de comercialización o de producción en serie.