

S9881

Simplicity[®] COSTUMES



 Designed and printed in USA.

Shop all the pattern brands you love @

Simplicity[®].com

Average

MISSES' SKIRTS

Suggested Fabrics: Brocade, Jacquard, Satin, Shantung, Silks and Silk Types, Taffeta. **Lining:** Lining Fabric. **Stiffening:** Net. **Interfacing:** Lightweight Fusible.

Notions: A,B,C: 7" (18cm) zipper. **Also for A:** Two hooks and eyes. **Also for B,C:** Skirt hook closure, one hook and eye. **Also for C:** 3¾" (9cm) length of ¾" (2cm) hook and loop tape.

Sizes	6	8	10	12	14	16
European	32	34	36	38	40	42

Interfacing A,B,C

20" - 1½ yds.

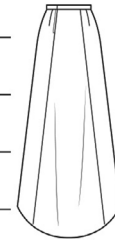
51cm - 1.0m

Skirt A	45"*	2¾	2¾	2¾	2¾	2¾	2¾	Yds.
	60"*	2½	2½	2½	2½	2½	2½	"
	115cm*	2.5	2.5	2.5	2.5	2.5	2.5	m
	150cm*	2.3	2.4	2.4	2.5	2.5	2.5	"
Skirt B	45"*	6½	6½	6½	6½	6½	6½	Yds.
	60"*	5¾	5¾	5¾	5¾	5¾	5¾	"
	115cm*	5.6	5.6	5.6	5.6	5.6	5.6	m
	150cm*	5.3	5.3	5.3	5.3	5.3	5.3	"
Lining	45"***	3½	3½	3½	3½	3½	3½	Yds.
	115cm**	3.2	3.2	3.2	3.2	3.2	3.2	m
Skirt C	60"*	5	5½	5½	5½	5½	5½	Yds.
	150cm*	4.6	4.7	4.7	4.8	4.8	4.8	m
Netting	54"***	2½	2½	2½	2½	2½	2½	Yds.
	137cm**	2.4	2.4	2.4	2.4	2.4	2.4	m

FINISHED GARMENT MEASUREMENTS (Includes Design and Wearing Ease)

A,B,C Hip	39	40	41	42½	44	46	Ins.
	(99)	(102)	(104)	(108)	(112)	(117)	(cm)
Width, lower edge							
Skirt A,B,C (without train)	64½	65½	66½	68	69½	71½	Ins.
	(164)	(166)	(169)	(174)	(177)	(182)	(cm)
Finished back length from waist							
Skirt A,B,C (without train)	41½	41½	41½	41½	41½	41½	Ins.
	(105)	(105)	(105)	(105)	(105)	(105)	(cm)

*with nap **without nap



A



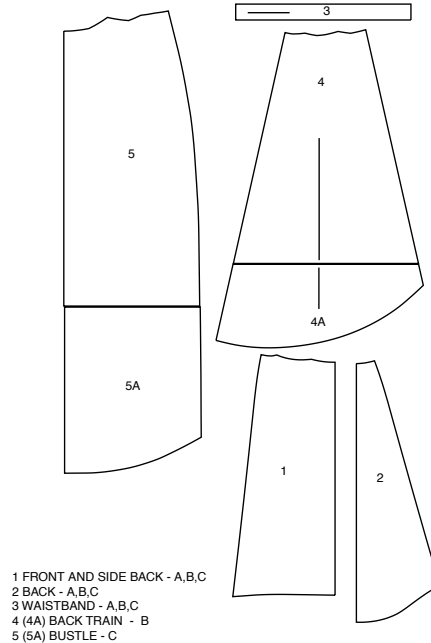
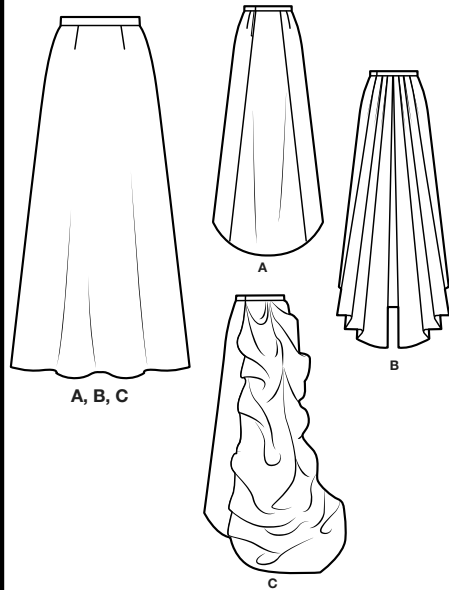
B



C

Simplicity®

Thank you for purchasing this Simplicity pattern.
We made every effort to provide you with a high quality product.



www.simplicity.com



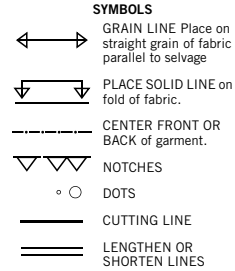
info@simplicity.com



1-888-588-2700

General Directions

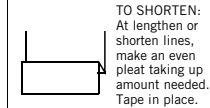
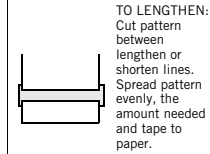
The Pattern



SEAM ALLOWANCE: 5/8" (1.5cm) unless otherwise stated is included but not printed on MULTI-SIZE PATTERNS. Mark your size with colored felt tip pen. See chart on tissue for how to use MULTI-SIZE PATTERNS.

ADJUST IF NEEDED

Make adjustments before placing pattern on fabric.



When lengthen or shorten lines are not given, make adjustments at lower edge of pattern.

Cutting/Marking

BEFORE CUTTING:

PRESS pattern pieces with a warm dry iron. PRE-SHRINK fabric by pre-washing washables or steam-pressing non-washables.

CIRCLE your cutting layout.

PIN pattern to fabric as shown in Cutting Layouts.

• FOR DOUBLE THICKNESS: Fold fabric with RIGHT sides together.

• FOR SINGLE THICKNESS: Place fabric RIGHT side up.

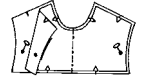
• FOR PILE, SHADED OR ONE WAY DESIGN FABRICS: Use "with nap" layouts

AFTER CUTTING:

Transfer markings to WRONG side of fabric before removing pattern. Use pin and chalk method or dressmaker's tracing paper and wheel.

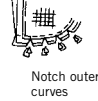
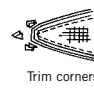
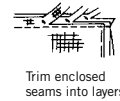
To Quick Mark:

- Snip edge of fabric to mark notches, ends of fold lines and center lines.
- Pin mark dots.



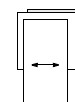
Sewing

- SEW garment following **Sewing Directions**.
- PIN or machine-baste seams matching notches.
- STITCH 5/8" (1.5 cm) seams unless otherwise stated.
- PRESS seams open unless otherwise indicated clipping when necessary so seams will lie flat.
- TRIM seams to reduce bulk, as shown below.

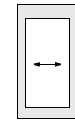


SPECIAL CUTTING NOTES

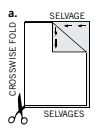
★ If layout shows a piece extending past fold, cut out all pieces except piece that extends.



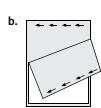
Open out fabric to single thickness. Cut extending piece on RIGHT side of fabric in position shown.



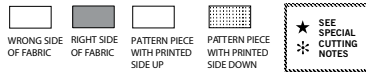
✱ Mark small arrows along both selvages indicating direction of nap or design. Fold fabric crosswise with RIGHT sides together, and cut along fold (a).



Turn one fabric layer around so arrows on both layers go in the same direction. Place RIGHT sides together (b).



Cutting Layouts

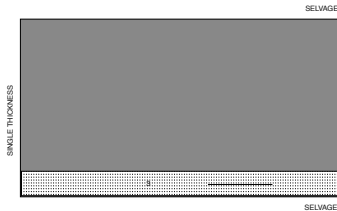


POSITION OF PATTERN PIECES MAY VARY SLIGHTLY ACCORDING TO YOUR PATTERN SIZE

INTERFACING A,B,C

USE PIECE 3

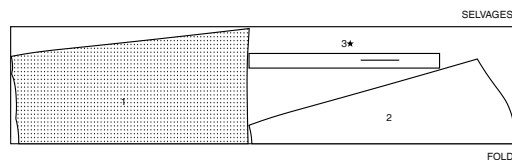
20" (51CM)
ALL SIZES



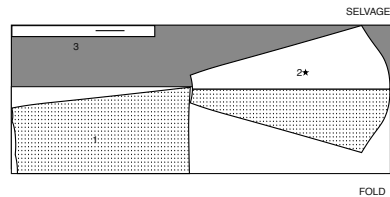
SKIRT A

USE PIECES 1 2 3

45" (115CM)
WITH NAP
ALL SIZES



60" (150CM)
WITH NAP
ALL SIZES

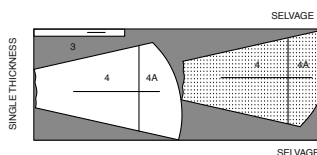
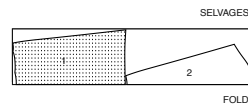


SKIRT B

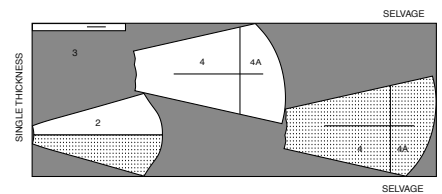
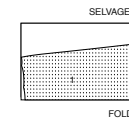
USE PIECES 1 2 3 4 (4A)

B,C, NOTE: BEFORE CUTTING FABRIC JOIN PIECE IN PARENTHESIS TO CORRESPONDING PIECE FOLLOWING INSTRUCTIONS ON TISSUE PATTERN.

45" (115CM)
WITH NAP
ALL SIZES



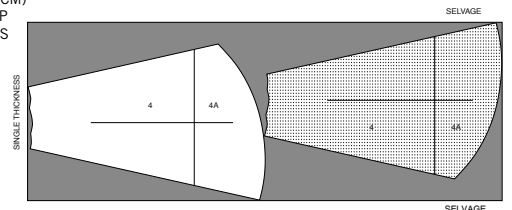
60" (150CM)
WITH NAP
ALL SIZES



LINING

USE PIECES 4 (4A)

46" (115CM)
WITH NAP
ALL SIZES



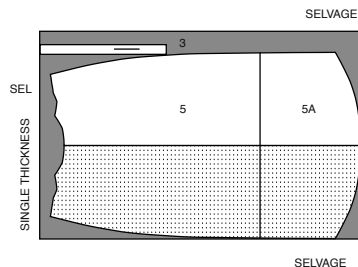
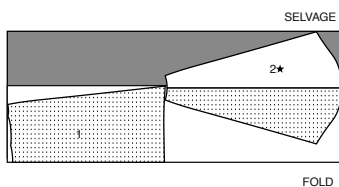
CUTTING LAYOUTS CONTINUED ON PAGE 2

S9881

2 of 4

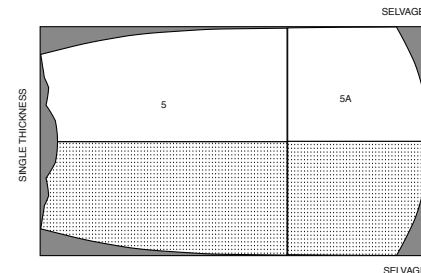
SKIRT C

USE PIECES 1 2 3 5 (5A)

60" (150CM)
WITH NAP
ALL SIZES

NETTING

USE PIECES 5 (5A)

54" (140CM)
WITH NAP
ALL SIZES

Sewing Directions

FABRIC KEY

Read **General Directions** on page 1 before you begin.

STAY-STITCH - Stitch 3/8" (1cm) from cut edge in direction of arrows. This stitching stays in permanently to prevent stretching on curved edges. (Shown only in the first illustration.)

FINISH -To finish unnotched edge, stitch 1/4" (6mm) from edge, turn under along stitching and stitch OR zig-zag over the edge OR overlock/serge over the edge.

PATTERN PIECES WILL BE IDENTIFIED BY NUMBERS THE FIRST TIME THEY ARE USED.

STITCH SEAMS WITH RIGHT SIDES TOGETHER UNLESS OTHERWISE STATED.

SKIRT A

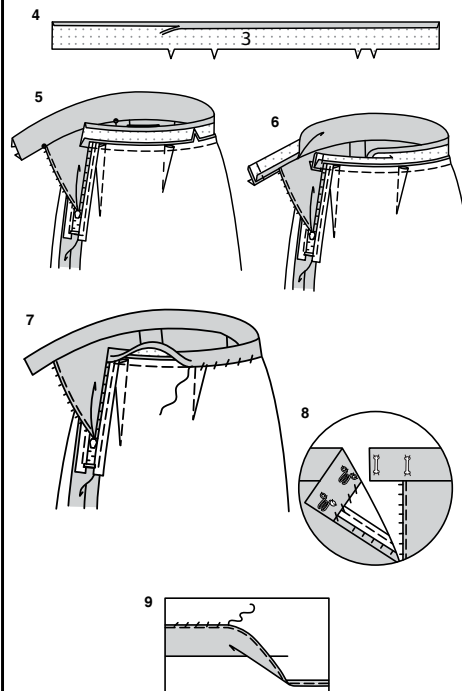
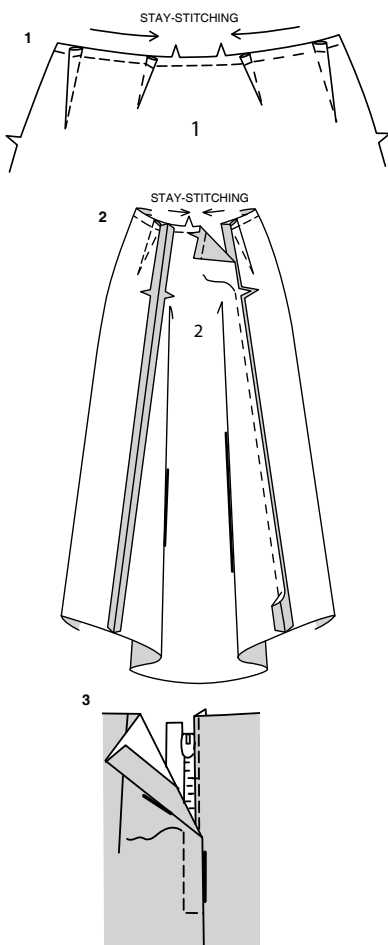
NOTE: DETERMINE FINISHED LENGTH BEFORE CUTTING AND SEWING.

FRONT AND BACK

- 1. STAY-STITCH** upper edge of FRONT AND SIDE BACK (1).
Make darts. Press darts closest to center front toward center; press remaining darts away from center.
- 2. STAY-STITCH** upper edge of BACK (2).
With right sides together, pin back to front and side back sections. Stitch side back seams, leaving LEFT side back seam open above notch. Back-stitch to reinforce seam.

ZIPPER

- 3.** Press under 5/8" (1.5cm) on LEFT side front opening edge and 1/2" (1.3cm) on LEFT side back opening edge.
Pin LEFT back edge to zipper tape, placing pressed edge close to zipper teeth and tab end of zipper 1" (2.5cm) below upper edge. Baste.
Pin and baste LEFT side front edge to zipper tape, lapping LEFT side front 1/8" (3mm) over LEFT side back.
Stitch as baste using an adjustable zipper foot.



WAISTBAND

- 4.** Apply INTERFACING to WAISTBAND (3).
Press under 5/8" (1.5cm) on long unnotched edge of waistband; trim to 1/4" (6mm).
- 5.** With right sides together, pin band to skirt, matching centers, placing opening edges at outer small dots and RIGHT side back seam at inner small dot. Baste, easing skirt to fit. Stitch. Trim seam; press toward band.
- 6.** Fold band with right sides together. Stitch ends. Trim seams and corners.
- 7.** Turn band; press.
Slip-stitch pressed edge of band over seam.

FINISHING

- 8.** Lap ends of band. Fasten with hooks and eyes, as shown.

- 9.** Press up 1" (2.5cm) hem on lower edge of skirt.
FINISH the raw edge.
Slip-stitch hem in place, easing in fullness.

SKIRT B

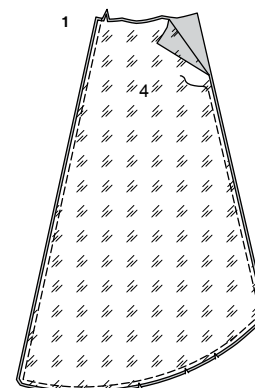
NOTE: DETERMINE FINISHED LENGTH BEFORE CUTTING AND SEWING.

FRONT AND BACK

MAKE SAME AS SKIRT A, SEE STEPS 1, 2 AND 3.

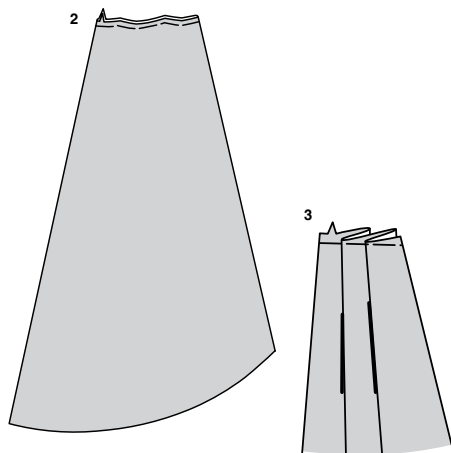
BACK TRAIN

- 1.** With right sides together, pin BACK TRAIN (4) to back train LINING (4), matching center backs and having raw edges even. Stitch side, lower and center back edges. Layer seams. Trim corners; clip curves.



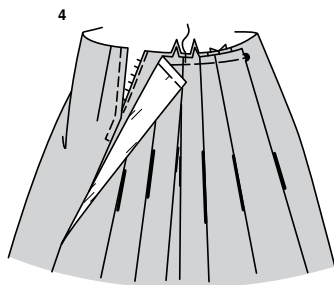
S9881

3 of 4

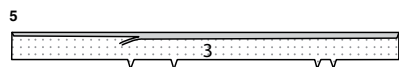


2. Turn back train right side out; press. Baste across upper edge. (Repeat with remaining back train sections.)

3. To make pleats, on OUTSIDE, fold along solid lines, bring solid line to broken line in direction of arrows; pin. Baste across upper edge.

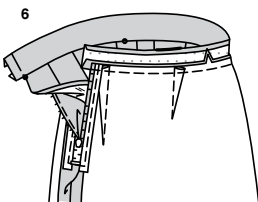


4. Open zipper at side back edge of skirt. On OUTSIDE, pin one back train section to skirt back on RIGHT side, matching center backs and placing finished edge at large dot on skirt. Pin remaining back train to skirt back on LEFT side, matching centers. (Train extends beyond LEFT back opening edge, as shown). Baste upper edges of skirt and train together.

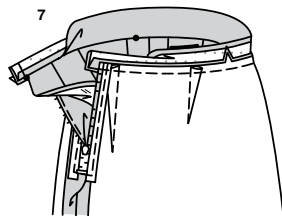


WAISTBAND

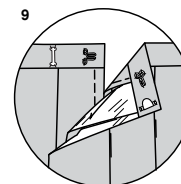
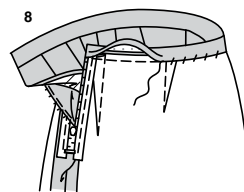
5. Apply INTERFACING to WAISTBAND (3). Press under 5/8" (1.5cm) on long unnotched edge of waistband; trim to 1/4" (6mm).



6. With right sides together, pin band to skirt, matching centers, placing zipper opening edges at outer small dots, RIGHT side back seam at inner small dot and train LEFT back edge at large dot on band. Baste, easing skirt to fit. Stitch. Trim seam; press toward band.



7. Fold band with right sides together. Stitch ends. Trim seams and corners.



8. Turn band; press. Slip-stitch pressed edge of band over seam.

FINISHING

9. Lap ends of band. Fasten end with hook and eye closure and fasten inner edge with hook and eye, as shown. Hem skirt same as SKIRT A, see step 9.

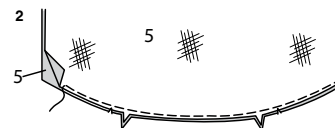
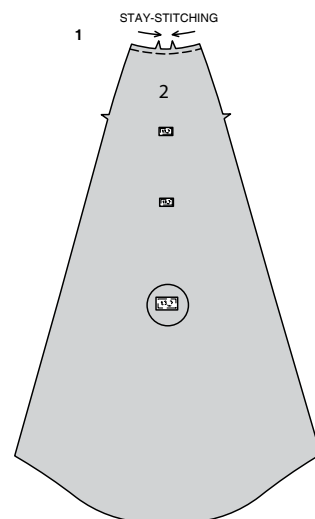
SKIRT C

NOTE: DETERMINE FINISHED LENGTH BEFORE CUTTING AND SEWING.

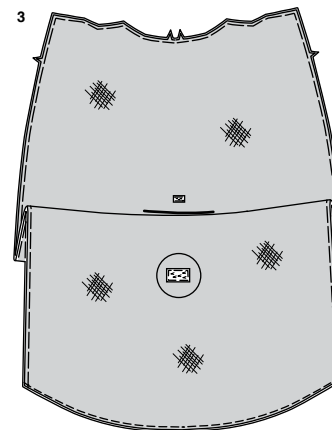
FRONT AND BACK

Prepare front and side back same as SKIRT A, see **step 1**.

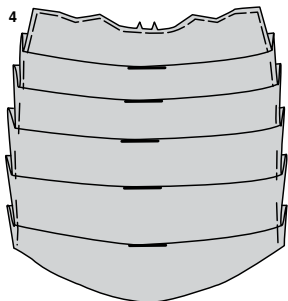
1. **STAY-STITCH** upper edge of BACK (2). Cut three strips of hook and loop tape, each 1-1/4" (3.2cm) long. Pin fuzzy side of tape to skirt back at solid lines, facing up. Stitch along outer edges, as shown. (The remaining half of tape will be sewn to bustle.)



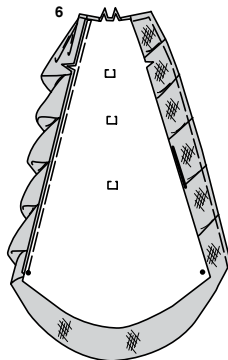
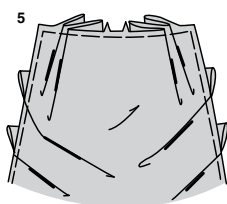
2. With right sides together, pin net BUSTLE (5) to BUSTLE (5) at lower edge, matching centers and having raw edges even. Stitch in 3/8" (1cm) seam; clip curves.



3. Turn net to inside, having raw edges even; press. Baste raw edges. Pin remaining hook and loop tape sections to net side of bustle, placing stiff side facing up. Stitch along outer edges, as shown.



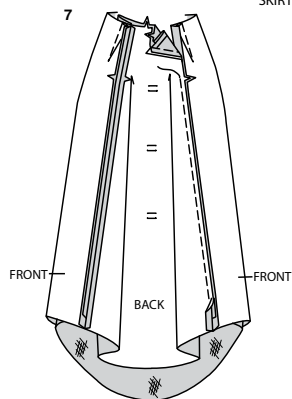
4. To make pleats on side edges of bustle, on outside, fold along solid lines. Bring folds to broken lines in direction of arrows; pin. Baste across side edges.



SKIRT BACK

5. To make pleats on upper edge of bustle nearest center back, on outside, fold along solid lines. Bring folds to nearest broken lines in direction of arrows; pin. Make remaining pleats at upper edge in the same manner. Baste across upper edge.

6. On outside, pin net side of bustle to back, matching centers and small dots, having raw edges even. (Bustle back extends beyond skirt back). Baste bustle and back together at side edges, as shown.

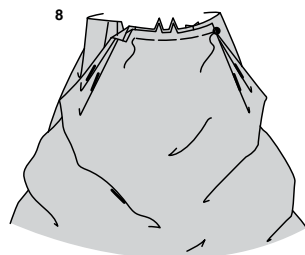


7. With right sides together, pin back to front and side back. Stitch side back seams, leaving LEFT side back seam open above notch. Back-stitch to reinforce seam.

ZIPPER

Apply zipper same as SKIRT A, see step 3

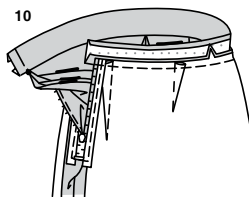
8. Open zipper at side back edge of skirt. On OUTSIDE, pin bustle to skirt back, matching center backs, folding and placing pleated edge at large dot on skirt right back. Fold pleated edge on LEFT side of bustle, as shown. (Bustle extends beyond LEFT back opening edge). Baste upper edges of skirt back and bustle together as far as large dot.



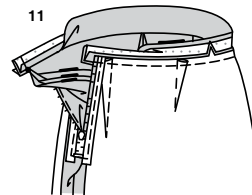
WAISTBAND



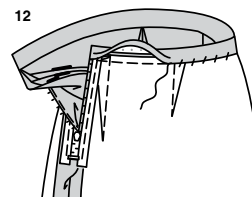
9. Apply INTERFACING to WAISTBAND (3). Press under 5/8" (1.5cm) on long unnotched edge of waistband; trim to 1/4" (6mm).



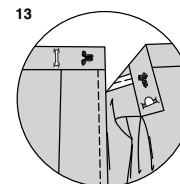
10. With right sides together, pin band to bustle, matching centers, placing opening edges at outer small dots, RIGHT side back seam at inner small dot and placing bustle LEFT back edge at large dot on band. Baste, easing skirt to fit. Stitch. Trim seam; press toward band.



11. Fold band with right sides together. Stitch ends. Trim seams and corners.

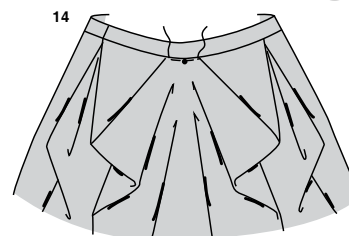


12. Turn band; press. Slip-stitch pressed edge of band over seam.



FINISHING

13. Lap ends of band. Fasten end with hook and eye closure and fasten inner edge with hook and eye, as shown. Hem skirt same as SKIRT A, see step 9.



14. Fold back bustle at small dot and bring fold up to center back at waist seam, as shown. Stitch across fold to hold in place.



15. Fasten hook and loop tape on bustle to hook and loop tape on skirt back, forming puffs.



Congrats!

You've completed your sewing adventure

SHARE YOUR LOOK



Post your pattern and tag us
@simplicity_creative_group and **#simplicitypatterns**
for a chance to be featured on our social media.

Look for more PDF patterns at [simplicity.com](https://www.simplicity.com)

Have a question or need help with your sewing project call us at
1-888-588-2700



Simplicity ©2023 a division of IG Design Group Americas Inc. • Atlanta, GA 30342 USA www.thedesigngroup.com • All Rights Reserved. www.simplicity.com • Made in the U.S.A. Fabriqué aux États-Unis.

To be used for individual private home use only and not for commercial or manufacturing purposes. • A usage privé seulement et non à des fins commerciales ou de production en série. • Para uso privado solamente, no se puede utilizar con propósitos de comercialización o de producción en serie.