

S9874

Simplicity[®]

Clothes Fit Dolls 18 in/45.5cm



Designed and printed in USA



easy-to-sew

Shop all the pattern brands you love @

Simplicity[®].com

Easy

18" (46CM) DOLL CLOTHES

Suggested Fabrics: A,B,C,D,E,F,G,H: Chambray, Cotton/Cotton Blends, Lightweight Denim, Satin. **A,B also in:** Novelty Sheer. **C,D also in:** Cotton Jersey. **F also in:** Satin.

Notions: A,B: Six 3/16" - 1/4" (5mm - 6mm) buttons, two 3/16" - 1/4" (5mm - 6mm) snaps. C,D,E,F,G: 1/2" (1.3cm) hook and loop tape: 5" (13cm) length for C, 2 1/4" (6cm) length for D, 1" (2.5cm) length for E, 2 3/4" (7cm) length for F, 2 1/2" (6cm) length for G. **Also for E:** 1/4 yd. (0.3m) of 1/4" (6mm) grosgrain ribbon. **Also for F:** 1/4 yd. (0.3m) of 1/8" (3mm) ribbon. H: 3/8 yd (0.6m) of 1/4" (6mm) elastic.

Cardigan A

18" x 13" (46cm x 33cm) fabric remnant

Shirt B

18" x 15" (46cm x 35cm) fabric remnant

Top C

16" x 14" (40cm x 35cm) fabric remnant

Top D

13" x 6" (33cm x 14cm) fabric remnant

Top E

14" x 7" (35cm x 18cm) fabric remnant

Dress F

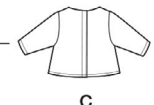
14" x 18" (35cm x 44cm) fabric remnant

Pants G

18" x 15" (46cm x 38cm) fabric remnant

Skirt H

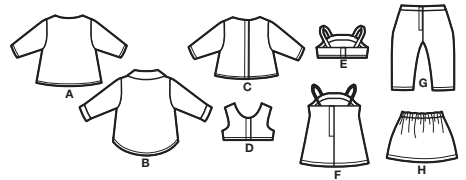
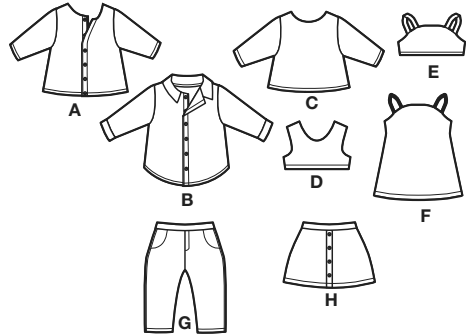
9" x 14" (23cm x 35cm) fabric remnant



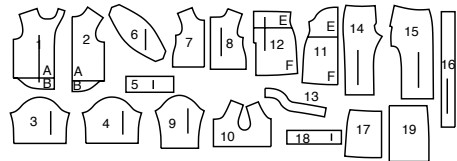
*with nap **without nap

Simplicity® S9874

Thank you for purchasing this Simplicity pattern.
We made every effort to provide you with a high quality product.

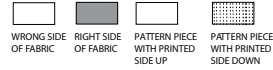


19 PIECES



- | | |
|-----------------|---------------------|
| 1 Front-A,B | 10 Top-D |
| 2 Back-A,B | 11 Front-E,F |
| 3 Sleeve-A | 12 Back-E,F |
| 4 Sleeve-B | 13 Front Facing-E,F |
| 5 Sleeve Band-B | 14 Front-G |
| 6 Collar-B | 15 Back-G |
| 7 Front-C | 16 Waistband-G |
| 8 Back-C | 17 Front-H |
| 9 Sleeve-C | 18 Waistband-H |
| | 19 Back-H |

Cutting Layouts



POSITION OF PATTERN PIECES MAY VARY SLIGHTLY ACCORDING TO YOUR PATTERN SIZE

General Directions For Cutting

PRE-SHRINK and iron all fabric.

FOR DOUBLE THICKNESS -Fold fabric with RIGHT sides together. Pin pattern to WRONG side of fabric.

FOR SINGLE THICKNESS -Pin pattern to RIGHT side of fabric.

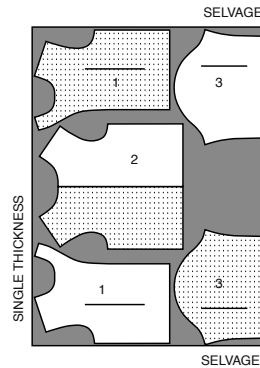
★ If layout shows a piece extending past fold, cut out all pieces except piece that extends. Open out fabric to single thickness. Cut extending piece on RIGHT side of fabric in position shown.

✱ Mark small arrows along both selvages indicating direction of nap or design. Fold fabric crosswise with RIGHT sides together, and cut along fold. Turn one fabric layer around so arrows on both layers go in the same direction. Place RIGHT sides together.

CARDIGAN A

USE PIECES 1 2 3

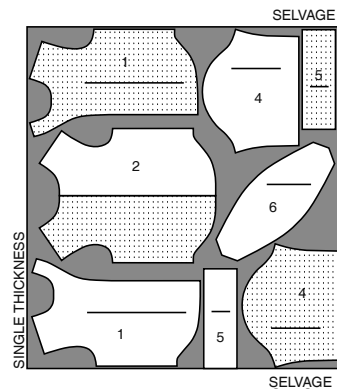
18" x 13" (46CM x 33CM) Remnant



SHIRT B

USE PIECES 1 2 3 4 5 6

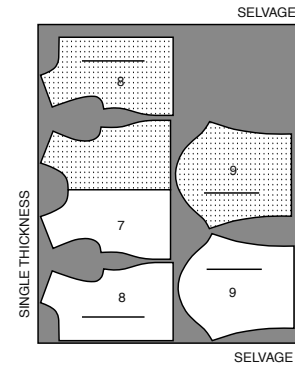
18" x 15 (46CM x 35CM) Remnant



TOP C

USE PIECES 7 8 9

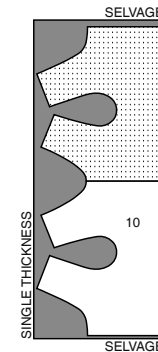
16" x 14" (40CM x 35CM) Remnant



TOP D

USE PIECES 10

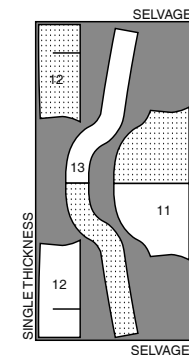
13" x 6" (33CM x 14CM) Remnant



TOP E

USE PIECES 11 12 13

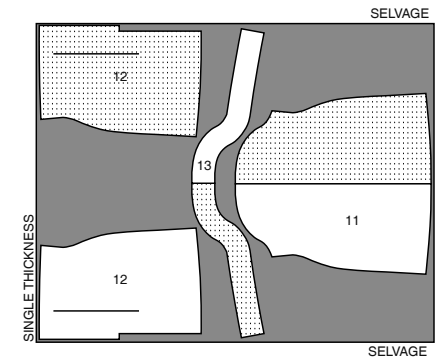
14" x 7" (35CM x 18CM) Remnant



DRESS F

USE PIECES 11 12 13

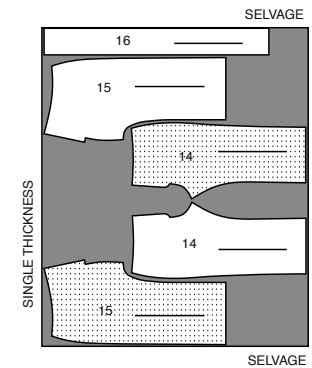
14" x 18" (35CM x 44CM) Remnant



PANTS G

USE PIECES 14 15 16

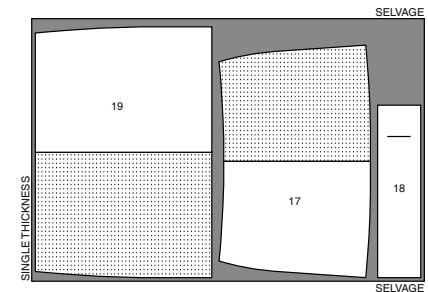
18" x 15 (46CM x 38CM) Remnant



SKIRT H

USE PIECES 17 18 19

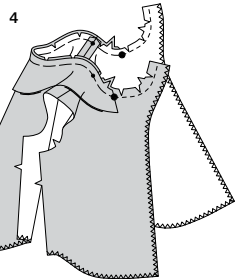
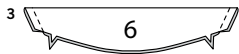
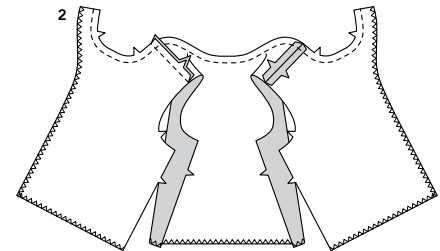
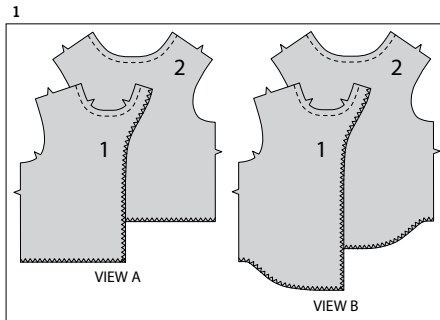
9" x 14" (23CM x 35CM) Remnant



SEWING TUTORIALS



Build your skills viewing short, easy-to-follow videos at [simplicity.com/sewingtutorials](https://www.simplicity.com/sewingtutorials)



Sewing Directions

FABRIC KEY RIGHT SIDE WRONG SIDE INTERFACING LINING LINING

Read **General Directions** on page 1 before you begin.

EASE – see **Gathering**: “sewing two row gathers” video

NARROW HEM – see **Hems**: “sewing narrow hems” video

TOPSTITCH – see **Machine Stitches**: “how to topstitch” video

TRIM SEAM – see **Seams**: “how to trim, clip and layer seams” video

PATTERN PIECES WILL BE IDENTIFIED BY NUMBERS THE FIRST TIME THEY ARE USED.

STITCH 1/4" (6MM) SEAMS WITH RIGHT SIDES TOGETHER UNLESS OTHERWISE STATED.

CARDIGAN A, SHIRT B

1. Finish front and lower edges of **FRONT (1)**, and lower edges of **BACK (2)**, with a zigzag or overlock stitch. Machine stitch neck edges, along seam line.

2. With **Right sides** together, pin front to back at shoulder seams. Stitch.

COLLAR B

3. Fold **COLLAR (6)** in half along fold line with **RIGHT sides** together. Stitch ends. **TRIM SEAM.**

4. Turn collar **Right side** out; press. Baste raw edges together. Clip neck edge of shirt to stitching, being careful not to clip through stitching. Clipping will help the seam lie flat, but will weaken the seam. So try to clip, sparingly. On **Outside**, pin collar to neck edge, matching large dots and placing small dots at shoulder seams. Baste.

CONTINUE AS FOLLOWS FOR BOTH VIEWS

5. Fold facing to the **Outside** along fold line. Pin facing to neck edge, having raw edges even, matching notches. Baste. Stitch neck edge. **TRIM SEAM.**

6. Turn facing to **inside** along fold line; press, pressing neck seam allowance toward cardigan and collar out for **View B**. On **Outside**, stitch 1/8" (3mm) from finished edge or collar seam.

SLEEVE A

7. Finish lower edges of **SLEEVE (3)** with a zigzag or overlock stitch. Press lower edge of sleeve to the **Inside** along 1/2" (1.3cm) hem allowance. **NARROW HEM.**

SLEEVE B

8. Fold **SLEEVE BAND (5)** along fold line with **Wrong sides** together. Baste side and lower edges.

9. **EASE** notched edge of **SLEEVE (4)** between small dots. Pin sleeve band to sleeve, matching small dots and notches, pulling up ease stitches to fit. Stitch notched edge. **TRIM SEAM.** Press seam toward band. On **Outside**, stitch band close to seam.

CONTINUE AS FOLLOWS FOR BOTH VIEWS

10. With **RIGHT sides** together, pin sleeve to armhole edge, matching notches, and placing small dot at shoulder seam. Stitch. Clip curves. Press seam toward cardigan or shirt.

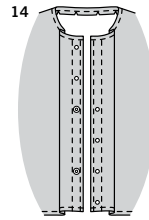
11. Pin front to back at entire underarm seam, matching armhole seams and notches. Stitch. **TRIM SEAM.**

12. Open out the facing on the lower edge of front. Machine-stitch 1/4" (6mm) from lower edge of cardigan or shirt. Press up hem along stitching, easing out the fullness for **View B**; pin. (**View B** is shown in illustration.)

13. Press facing back in place. Stitch hem a generous 1/8" (3mm) from pressed edge. (**View B** is shown in illustration.)

S9874

3 of 5



14

- 14.** On Outside, **TOPSTITCH** along stitching line and close to front edge. Hand-sew buttons over lower four dots on left side of garment, and over top two small dots on right front. Sew socket sections of snaps to third and fifth small dots on right front, and knob sections under snaps on the left front.

TOP C

- 1.** If you prefer, cut a 1/2" (1.3cm) wide section of fusible interfacing remnant the shape of the neck, armhole, and lower edge of **FRONT (7)** and **BACK (8)**, as shown. Pin to Wrong side of fabric. Fuse interfacing to top, following manufacturer's directions.

- 2.** Pin front to back at shoulder seams, matching notches. Stitch.

- 3.** Finish neck edge with a zigzag or overlock stitch. Press under 1/4" (6mm) along neck edge. Stitch 1/8" (3mm) from pressed edge.

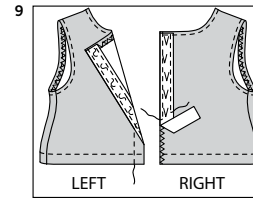
- 4.** Finish lower edge of **SLEEVE (9)** with a zigzag or overlock stitch. Press up 1/2" (1.3cm) hem and stitch 3/8" (1cm) from pressed edge.

- 5.** With Right sides together, pin sleeve to armhole edge, matching notches, and placing small dot at shoulder seam. Stitch. Clip to the stitching, if necessary, being careful not to clip through the stitching. Clipping will help the seam lie flat, but will weaken the seam. So try to clip, sparingly.

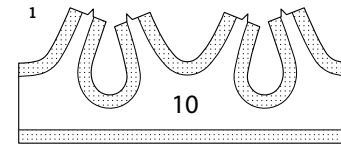
- 6.** Pin front to back at entire underarm seam, matching armhole seams and notches. Stitch. Clip curves.

- 7.** Finish lower edge of top with a zigzag or overlock stitch. Press up 1/2" (1.3cm) hem and stitch 3/8" (1cm) from pressed edge.

- 8.** Finish back opening edges with a zigzag or overlock stitch. Cut a strip of hook and loop tape 4-7/8" (12.25cm) long. Separate the tape. On Outside, pin soft half of the tape along the Left back edge. Stitch close to the inner edge of tape, as shown.

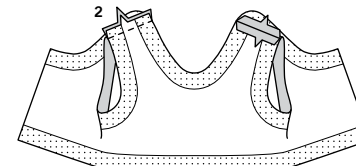


9

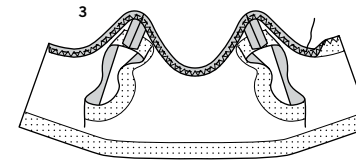


1

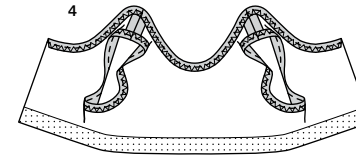
10



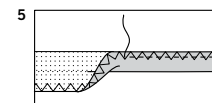
2



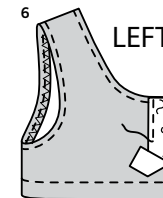
3



4

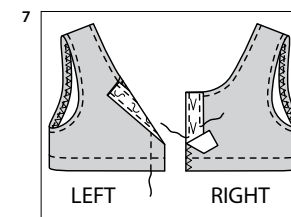


5



6

LEFT



7

LEFT

RIGHT

- 9.** Turn tape to the Inside; press. On Outside, stitch 3/8" (1cm) from fold. On the Outside, pin the rough half of the tape to the right back opening edge. Stitch close to both long edges of the tape.

TOP D

- 1.** If you prefer, cut a 1/2" (1.3cm) wide section of fusible interfacing remnant the shape of the neck, armhole, and lower edges of **TOP (10)**, as shown. Pin to Wrong side of fabric. Fuse interfacing to top, following manufacturer's directions.

- 2.** Pin front to back at shoulder seams, matching notches. Stitch.

- 3.** Finish neck edge with a zigzag or overlock stitch. Press under 1/4" (6mm) along neck edge. Stitch 1/8" (3mm) from pressed edge.

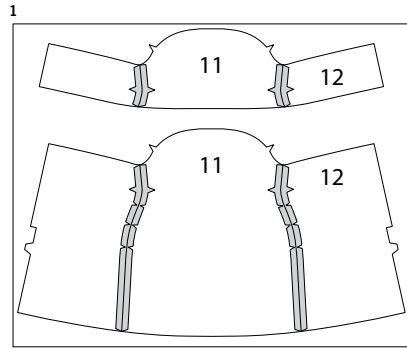
- 4.** Finish armhole edge with a zigzag or overlock stitch. Press under 1/4" (6mm) along armhole edge. Stitch 1/8" (3mm) from pressed edge in the same manner as neck edge.

- 5.** Finish lower edge of top with a zigzag or overlock stitch. Press up 1/2" (1.3cm) hem and stitch 3/8" (1cm) from pressed.

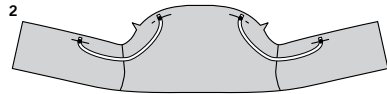
- 6.** Finish back opening edges with a zigzag or overlock stitch. Cut a strip of hook and loop tape 2-1/8" (5.4cm) long. Separate the tape. On Outside, pin soft half of the tape along the Left back edge. Stitch close to the inner edge of tape, as shown.

- 7.** Turn tape to the Inside; press. On Outside, stitch 3/8" (1cm) from fold. On the Outside, pin the rough half of the tape to the Right back opening edge. Stitch close to both long edges of the tape.

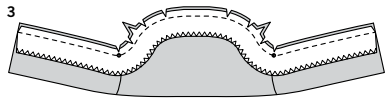
TOP E, DRESS F



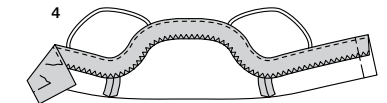
1. Stitch FRONT (11) to BACK (12) at side edges. Clip curves.



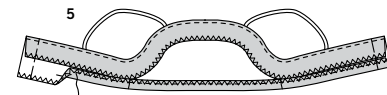
2. To make straps, cut two pieces of ribbon 4-1/2" (11.5cm) long. On Outside, pin ribbon to front and back over small dots with raw edges even. Baste.



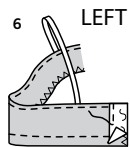
3. Finish lower edge of FRONT FACING (13) with a zigzag or overlock stitch. With Right sides together and raw edges even, pin facing to top or dress, matching centers and notches, placing inner small dots at side seams. Stitch. **TRIM SEAM.**



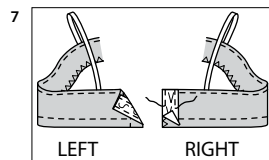
4. Turn facing to Inside; press, pressing out straps. On Outside, stitch close to finished edge. Baste raw edges together.



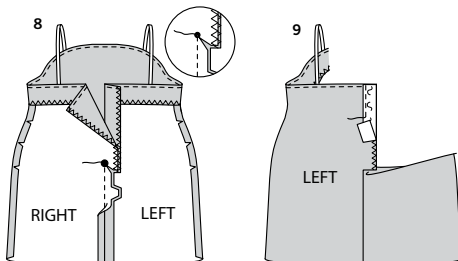
5. Finish lower edge of top with a zigzag or overlock stitch. Press up 3/8" (1cm) hem and stitch 1/4" (6mm) from pressed edge.



6. Finish back edges of top with a zigzag or overlock stitch. Cut a strip of hook and loop tape 1" (2.5 cm) long. Separate the tape. On Outside, pin the soft half of the tape along Left back edge. Stitch close to the inner edge of the tape, as shown.

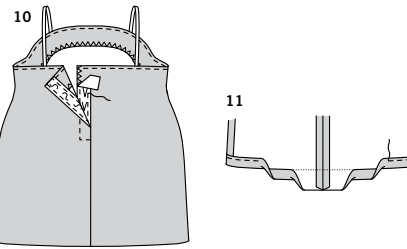


7. Turn tape to the inside, press. On Outside, stitch 3/8" (1cm) from fold, and across to the seam, catching in lower edge of the tape. Pin rough half of the tape along Right back opening edge. Stitch close to both long edges of tape.



8. Finish back edges with a zigzag or overlock stitch. Stitch center back seam from the lower edge to the large dot. Back-stitch at dot to reinforce the seam. Clip the seam allowance of the Right back to the stitching at the large dot. Press seam open below the clip.

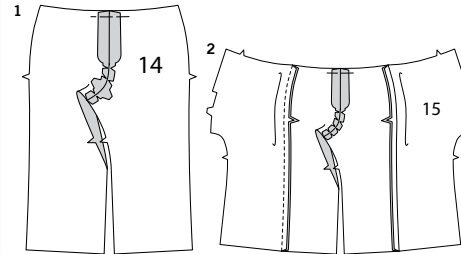
9. Cut a strip of hook and loop tape 2-7/8" (7.3 cm) long. Separate the tape. On Outside, pin the soft half of the tape along Left back edge. Stitch close to the inner edge of the tape, as shown.



10. Turn tape to the inside, press. On Outside, stitch 3/8" (1cm) from fold, and across to the seam, catching in lower edge of the tape. Pin rough half of the tape along Right back opening edge. Stitch close to both long edges of tape.

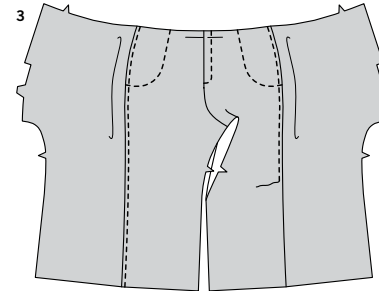
11. Press up 3/4" (2cm) hem. Turn under raw edge to meet crease. Stitch close to inner pressed edge.

PANTS G

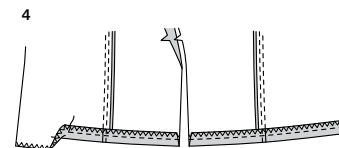


1. With Right sides together, pin center front edges of FRONT (14), matching notches. Stitch. Clip curve. Press seam open. Baste across seam allowance on upper edge.

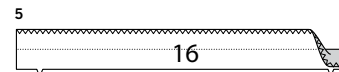
2. Stitch front to BACK (15) at side edges. Press seam toward front.



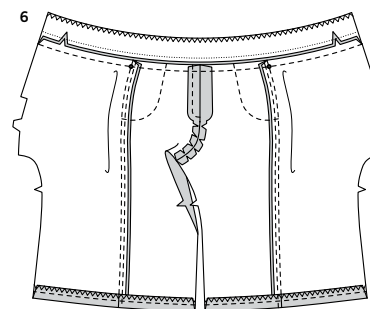
3. On Outside, stitch along stitching lines (indicating pockets) and along left front (indicating fly). Stitch front 1/8" (3mm) from side seams.



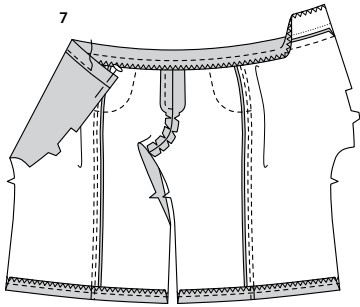
4. Finish lower edge of leg with zigzag or overlock stitch. Press up 1/2" (1cm) hem. Stitch 1/4" (6mm) from pressed edge.



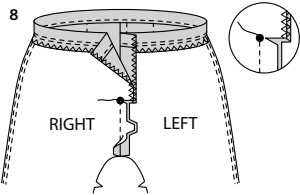
5. Finish unnotched edge of waistband (16) with a zigzag or overlock stitch. Fold waistband in half lengthwise with wrong sides together.



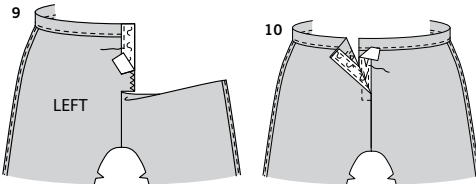
6. Open out the waistband. With Right sides together, pin waistband to upper edge of pants, matching notches, and placing small dots at side seams. Baste; stitch. Press waistband up, pressing seam toward waistband.



- 7.** Re-fold waistband bringing raw edge 1/4" (6mm) over seam on Inside. Pin, placing pins on Outside. On Outside, stitch waistband close to seam, catching in finished edge on the Inside. Press.

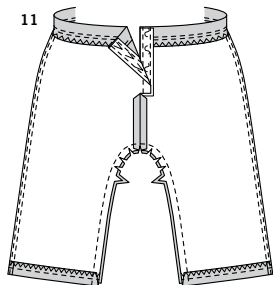


- 8.** Finish back edges of pants with a zigzag or overlock stitch. Stitch center back seam from the lower edge to the large dot. Back-stitch at dot to reinforce the seam. Clip the seam allowance of the Right back to the stitching at the large dot. Press seam open below the clip.

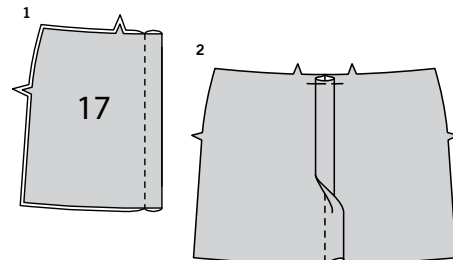


- 9.** Cut a strip of hook and loop tape 2-1/2" (6.3 cm) long. Separate the tape. On Outside, pin the soft half of the tape along Left back edge. Stitch close to the inner edge of the tape, as shown.

- 10.** Turn tape to the Inside, press. On Outside, stitch 3/8" (1cm) from fold, and across to the seam, catching in lower edge of the tape. Pin rough half of the tape along Right back opening edge. Stitch close to both long edges of tape.



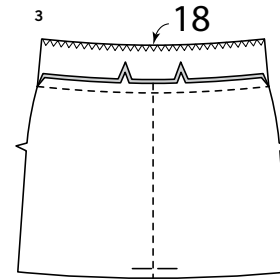
- 11.** With RIGHT sides together, pin front to back at inner leg seam, matching center front and center back seams. Stitch. Clip curves.



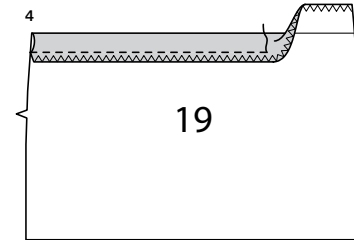
SKIRT H

- 1.** To make pleat on FRONT (17), fold in half along center with Wrong sides together. Stitch along stitching line.

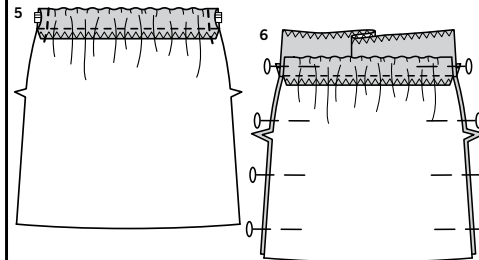
- 2.** Press pleat flat bringing stitching to center. Baste across raw edge.



- 3.** Finish unnotched edge of WAISTBAND (18) with zigzag or overlock stitch. With Right sides together and raw edges even, pin waistband to front, matching centers and notches. Stitch. Press seam toward waistband.

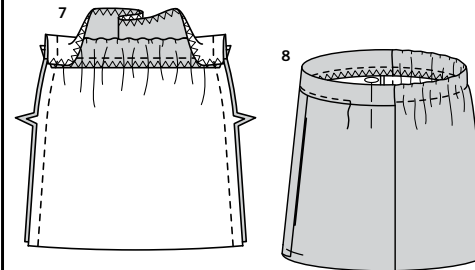


- 4.** Finish upper edge of BACK (19) with a zigzag or overlock stitch. To make casing for back, press under upper edge along fold line. Stitch 1/2" (1.3cm) from pressed edge.



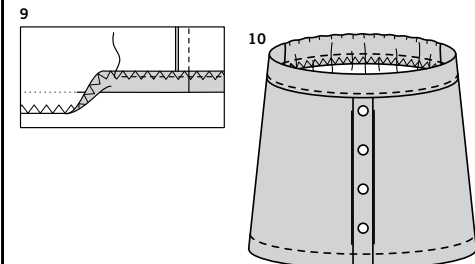
- 5.** Cut a piece of 1/4" (6mm) elastic 4-1/2" (11.5cm) long. Thread elastic through opening in one side edge of casing, bringing raw edges even. Stitch ends of elastic at side edges, securely.

- 6.** With Right sides together and raw edges even, pin front to back at side edges, matching centers and notches.



- 7.** Fold upper ends of waistband over back along fold line. Stitch side seams.

- 8.** Turn skirt; press, pressing seams toward front and waistband to inside along fold line. On Inside, pin waistband over seam, placing pins on Outside. On Outside, stitch waistband close to seam, catching in waistband facing on the Inside.



- 9.** Finish lower edge of skirt with a zigzag or overlock stitch. Press up 1/2" (1.3cm) hem and stitch 3/8" (1cm) from pressed edge.

- 10.** On Outside center front, hand sew one button 1" (2.5cm) from lower edge of skirt. Sew remaining three buttons on center 1" (2.5cm) apart from first.



Congrats!

You've completed your sewing adventure

**SHARE
YOUR** LOOK



Post your pattern and tag us
@simplicity_creative_group and **#simplicitypatterns**
for a chance to be featured on our social media.

Look for more PDF patterns at [simplicity.com](https://www.simplicity.com)

Have a question or need help with your sewing project call us at
1-888-588-2700



Simplicity ©2023 a division of IG Design Group Americas Inc. • Atlanta, GA 30342 USA www.thedesigngroup.com • All Rights Reserved. www.simplicity.com • Made in the U.S.A. Fabriqué aux États-Unis.

To be used for individual private home use only and not for commercial or manufacturing purposes. • A usage privé seulement et non à des fins commerciales ou de production en série. • Para uso privado solamente, no se puede utilizar con propósitos de comercialización o de producción en serie.