

S9872

Simplicity®



easy-to-sew

Designed and  
printed in USA. 

Shop all the pattern brands you love at

Simplicity®.com

Very Easy

**ZIPPER CASES****Suggested Fabrics and Lining:** Cotton/Cotton Blends, Rip Stop. **Interfacing:** Lightweight Fusible.**Notions:** A,B,C,D,E,F: 7" (18cm) length of ¼" (6mm) ribbon. **Also for A,E,F:** 12" (30cm) zipper (adjust to fit). **Also for B,C:** 9" (23cm) zipper (adjust to fit for C). **Also for D:** 16" (41cm) zipper (adjust to fit).**Zipper Case A** - 7" H x 11" Width at top x 8" Width at bottom x 3" D  
(18cm x 28cm x 20cm x 8cm)**Fabric, Lining:** 45"\* - ¾ yd. (115cm\* - 0.4m)  
**Interfacing:** 20" - ¾ yd. (51cm - 0.6m)**Zipper Case B** - 6¼" H x 9" Width at top x 6" Width at bottom x 3" D  
(16cm x 23cm x 15cm x 8cm)**Fabric, Lining, Interfacing:** 18" x 10" (46cm x 25cm) remnant each**Zipper Case C** - 4¾" H x 7½" Width at top x 5" Width at bottom x 2½" D  
(12cm x 19cm x 13cm x 6cm)**Fabric, Lining, Interfacing:** 15" x 9" (38cm x 23cm) remnant each**Zipper Case D** - 5½" H x 10" W x 5¼" D (14cm x 25cm x 14cm)**Fabric and Lining:** 45"\* - ¾ yd. each (115cm\* - 0.7m)  
**Interfacing:** 20" - ¾ yd. (51cm - 0.7m)  
**Contrast:** 7" x 6" (18cm x 15cm) remnant**Zipper Case E** - 4¾" H x 8¼" W x 4½" D (12cm x 21cm x 11cm)**Fabric, Lining, Interfacing:** 19" x 14" (48cm x 36cm) remnant each  
**Contrast:** 6" x 6" (15cm x 15cm) remnant**Zipper Case F** - 3½" H x 7" W x 3½" D (9cm x 18cm x 9cm)**Fabric, Lining, Interfacing:** 16" x 10" (41cm x 25cm) remnant each  
**Contrast:** 5" x 6" (13cm x 15cm) remnant

\*with nap \*\*without nap



A



B



C



D



E



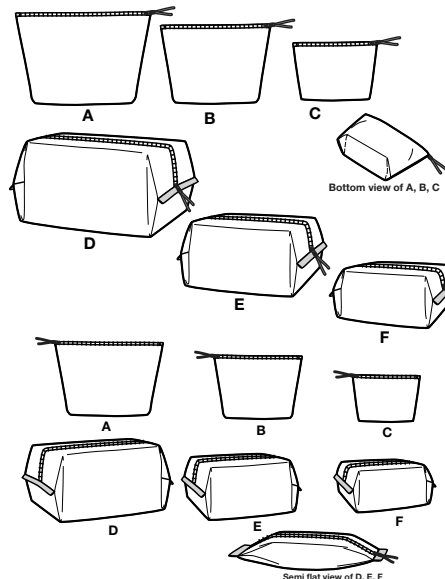
F



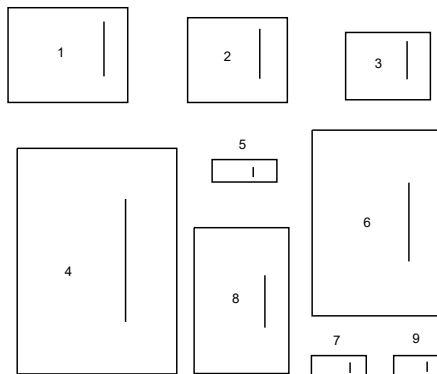
D,E,F

# Simplicity® S9872

Thank you for purchasing this Simplicity pattern.  
We made every effort to provide you with a high quality product.

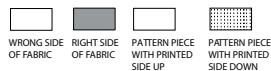


9 PIECES



- 1 FRONT AND BACK - A  
2 FRONT AND BACK - B  
3 FRONT AND BACK - C  
4 FRONT AND BACK - D  
5 BAND - D  
6 FRONT AND BACK - E  
7 BAND - E  
8 FRONT AND BACK - F  
9 BAND - F

## Cutting Layouts



POSITION OF PATTERN PIECES MAY VARY  
SLIGHTLY ACCORDING TO YOUR PATTERN SIZE

### General Directions For Cutting

**PRE-SHRINK** and iron all fabric.

**FOR DOUBLE THICKNESS** -Fold fabric with **RIGHT** sides together.  
Pin pattern to **WRONG** side of fabric.

**FOR SINGLE THICKNESS** -Pin pattern to **RIGHT** side of fabric.

★ If layout shows a piece extending past fold, cut out all pieces except piece that extends. Open out fabric to single thickness. Cut extending piece on **RIGHT** side of fabric in position shown.

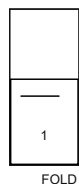
✱ Mark small arrows along both selvages indicating direction of nap or design.  
Fold fabric crosswise with **RIGHT** sides together, and cut along fold. Turn one fabric layer around so arrows on both layers go in the same direction. Place **RIGHT** sides together.

### ZIPPER CASE A

USE PIECE 1

45" (115CM)  
WITH NAP  
FOR LINING FOLLOW SAME LAYOUT.

SELVAGES



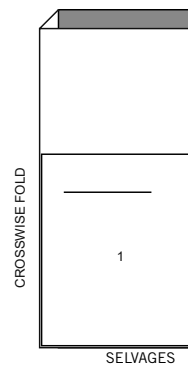
FOLD

### INTERFACING

USE PIECE 1

20" (51CM)

SELVAGES



SELVAGES

### ZIPPER CASE B

CUT TWO OF PIECE 2 FROM EACH OF 18" X 10" (46CM X 25CM) FABRIC, LINING AND INTERFACING REMNANTS.

### ZIPPER CASE C

CUT TWO OF PIECE 3 FROM EACH OF 15" X 9" (38CM X 23CM) FABRIC, LINING AND INTERFACING REMNANTS.

### ZIPPER CASE D, LINING D

USE PIECE 4

45" (115CM)  
WITH NAP

SINGLE THICKNESS



SELVAGE

FOR INTERFACING FOLLOW SAME LAYOUT USING  
20" (51CM) WIDTH.  
CUT ONE OF PIECE 4 ON **WRONG** SIDE FOR LINING AND INTERFACING.

### CONTRAST (BANDS)

CUT TWO OF PIECE 5 FROM 7" X 6" (18CM X 15CM) FABRIC REMNANT.

### ZIPPER CASE E

CUT ONE OF PIECE 6 FROM EACH OF 19" X 14" (48CM X 36CM) FABRIC, LINING AND INTERFACING REMNANTS.  
CUT ONE OF PIECE 6 ON **WRONG** SIDE FOR LINING AND INTERFACING.

### CONTRAST (BANDS)

CUT TWO OF PIECE 7 FROM 6" X 6" (15CM X 15CM) FABRIC REMNANT.

### ZIPPER CASE F

CUT ONE OF PIECE 8 FROM EACH OF 16" X 10" (41CM X 25CM) FABRIC, LINING AND INTERFACING REMNANTS. CUT ONE OF PIECE 8 ON **WRONG** SIDE FOR LINING AND INTERFACING.

### CONTRAST (BANDS)

CUT TWO OF PIECE 9 FROM 6" X 5" (13CM X 15CM) FABRIC REMNANT.

### SEWING TUTORIALS



Build your skills viewing short, easy-to-follow videos at  
[simplicity.com/sewingtutorials](http://simplicity.com/sewingtutorials)

## Sewing Directions

FABRIC  
KEY



Sewing methods in **BOLD TYPE** have Sewing Tutorial Video available.  
Scan QR CODE to watch videos:

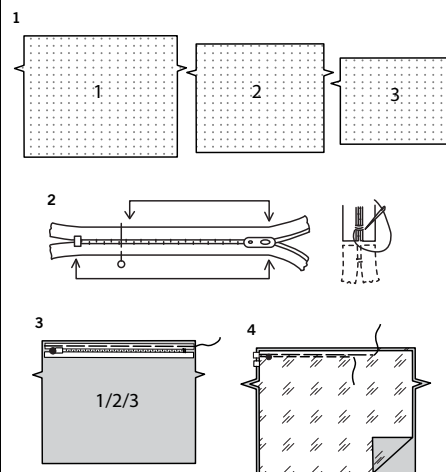
**EDGE STITCH** - see Machine Stitches: "how to edgestitch" video.

**SLIPSTITCH** - see Hand Stitching: "how to slipstitch" video.

**PATTERN PIECES WILL BE IDENTIFIED BY NUMBERS THE FIRST TIME THEY ARE USED.**

**STITCH IN 1/2" (1.3CM) SEAMS WITH RIGHT SIDES TOGETHER UNLESS OTHERWISE STATED.**

### COSMETIC BAGS A, B, C



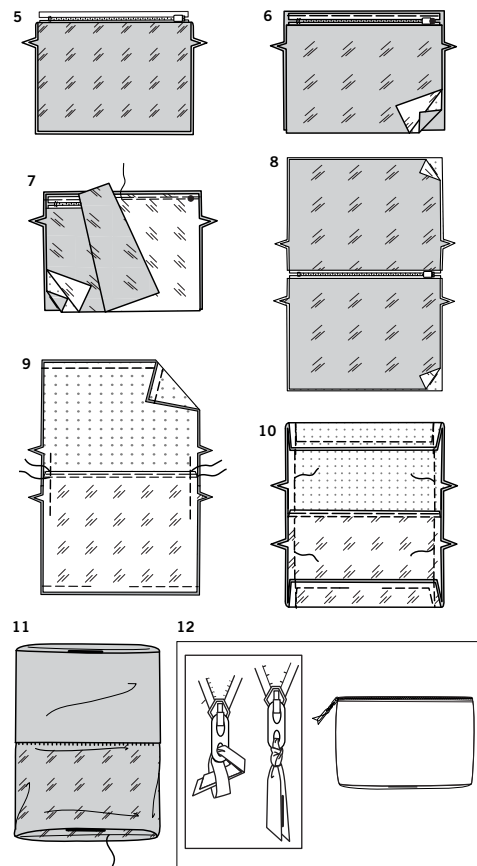
**1.** Apply fusible interfacing to **WRONG** side of front and back (1, 2, or 3) fabric sections, following manufacturer's instructions.

**2.** It may be necessary to adjust the length of your zipper. Measure the opening of front and back from large dot to opposite seam line on upper edge.  
Close the zipper and measure from the tab down along the teeth to the length needed. Mark new length.  
With matching buttonhole twist or heavy-duty thread, make several overcast stitches across zipper teeth at marking. Trim away lower end of zipper tape to within 5/8" (1.3cm) of overcast stitches.

**NOTE:** Use an adjustable zipper foot to apply zipper.

**3.** On **OUTSIDE**, pin closed zipper (face down) on opening edge of one fabric section, having top stop at large dot and placing outer edge of zipper tape a generous 1/8" (3mm) from raw edge of fabric. Baste in place.

**4.** With **RIGHT** sides together and raw edges even, pin one lining section to opening edge of fabric section (over zipper), matching large dots. Baste in place.  
Stitch along seam line.

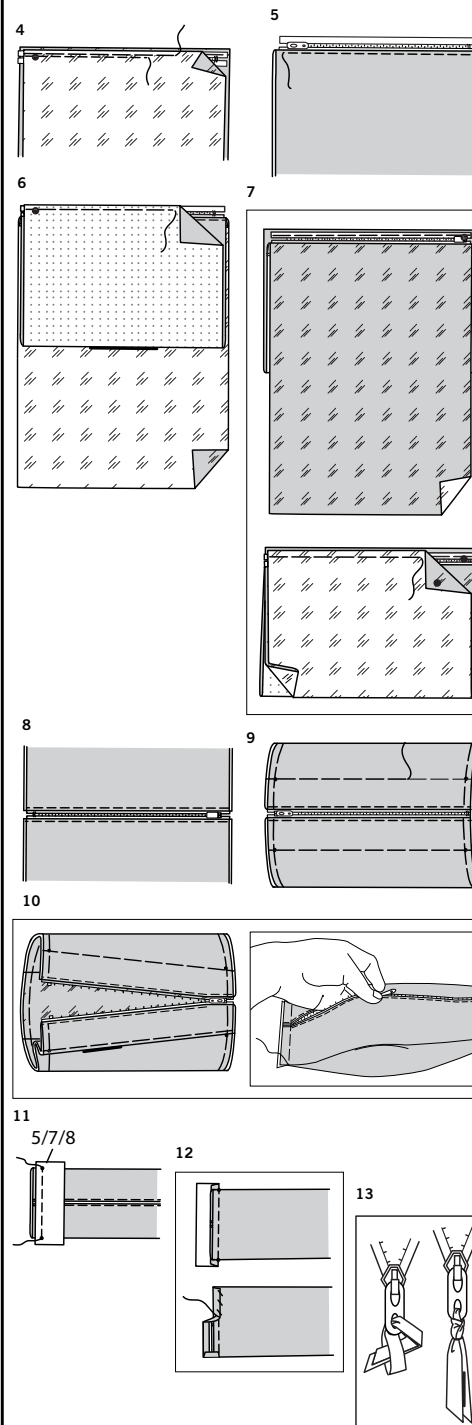


5. Press lining and fabric away from zipper.
6. On OUTSIDE, pin remaining half of zipper (face down) to opening edge of remaining fabric section, having top stop at large dot and outer edge of zipper tape a generous 1/8" (3mm) from raw edge; baste.
7. With RIGHT sides together and raw edges even, pin remaining lining section to remaining opening edge of fabric section (over zipper), matching large dots; stitch along seam line.
8. Press lining and fabric away from zipper.
9. Partially open zipper (not shown).  
With RIGHT sides together and raw edges even, pin bag front and back together and lining front and back together along outer edges.  
To make sure that the ends of the zipper will line up correctly, have inner edge of zipper teeth touching within seam allowance on opening end. Have inner edges of zipper tape touching on opposite end.  
Stitch each side seam between notches, breaking and reinforcing stitches at zipper seams; back-stitch at each end to reinforce seam.  
Stitch lower edges of bag fabric sections together.  
Stitch lower edges of lining sections together, leaving an opening for turning.  
**TIP-** Whipstitch ends of zipper teeth and tape together within seam allowance before stitching side seams.
10. To form "accordian style" corners on bag, turn lower edges of bag and lining towards each other along fold lines, as shown; pin.  
Stitch remainder of side seams, connecting to previous stitching.
11. Turn bag RIGHT side out through opening in lining and zipper opening.  
**SLIPSTITCH** opening in lining closed.  
Tuck in lower edge of bag along fold lines; press along folds, setting in crease.
12. Slip lining into bag, tucking in lower edge along fold lines to fit. Insert ribbon through the hole in the zipper pull and fasten in a knot at end of pull. Trim ends at an angle to desired length.

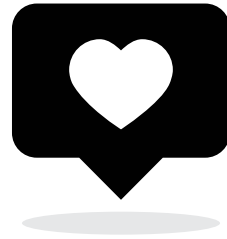
## BAG D, E, F

1. Apply fusible interfacing to WRONG side of front and back (4, 6, or 8) fabric sections, following manufacturer's instructions.
2. It may be necessary to adjust the length of your zipper. Measure the opening of front and back from large dot to opposite seam line on upper edge.  
Close the zipper and measure from the tab down along the teeth to the length needed. Mark new length.  
With matching buttonhole twist or heavy-duty thread, make several overcast stitches across zipper teeth at marking. Trim away lower end of zipper tape to within 5/8" (1.3cm) of overcast stitches.
3. On OUTSIDE, pin closed zipper (face down) to opening edge of one front and back fabric section, having top stop at large dot and placing outer edge of zipper tape a generous 1/8" (3mm) from raw edge of fabric.  
Baste in place.

**NOTE:** Use an adjustable zipper foot to apply zipper.



4. With RIGHT sides together and raw edges even, pin one lining section to opening edge of fabric section (over zipper), matching large dots; baste in place.  
Stitch along seam line.
5. Press fabric and lining away from zipper.  
Using a zipper foot, **EDGE STITCH** zipper edge.
6. Have the zipper face up with the RIGHT side of the fabric section and the WRONG side of the lining section facing up towards you.  
Turn up remaining opening edge of fabric section (bringing RIGHT sides of fabric together) and pin to remaining half of zipper, having top stop at large dot and placing outer edge of zipper tape a generous 1/8" (3mm) from raw edge of fabric.  
Baste in place, being careful not to catch in lining.
7. Turn the entire section over so that the zipper is face down and the RIGHT side of the lining is facing up towards you.  
Turn up remaining opening edge of lining (bringing RIGHT sides of lining together) and pin to WRONG side of zipper, matching large dots and having raw edges even. Stitch along seam line.
8. Turn RIGHT side out through opening on one side of fabric section. Open zipper.  
Press non-edgestitched edges of fabric and lining away from zipper and **EDGE STITCH**.  
**TIP-** If necessary, **EDGE STITCH** from each end towards the center, connecting stitches where they meet.
9. Pin raw edges of bag and lining together, matching small dots and foldlines, forming a tube.  
Machine-baste raw edges together.  
Hand-baste fabric to lining along each fold line using long hand-stitches.  
**TIP-** Roll a piece of cardboard into a tube and tape. Insert cardboard tube fabric tube so that you can easily baste bag to lining along fold lines.
10. Form "accordian style" folds, as follows, working on one half of the bag at a time:  
On OUTSIDE, fold OUTWARD along outer foldline at small dots near zipper; press, setting in fold.  
Fold OUTWARD along remaining outer foldline on that same side; press, setting in fold.  
Fold INWARD along inner foldline, having outer folds even, flattening bag; press. Baste across ends through all thicknesses.
11. With RIGHT sides and raw edges together, pin band (5, 7, or 9) to TOPSIDE of bag, matching small dots. Stitch between small dots, back-stitching at each dot to reinforce seam.
12. Press band out, pressing seam toward band.  
Press under seam allowance on remaining long edge of band, followed by short ends.  
Turn to UNDERSIDE and invisibly **SLIPSTITCH** over stitching.
13. Insert ribbon through the hole in the zipper pull and fasten in a knot at end of pull. Trim ends at an angle to desired length.



# Congrats!

You've completed your sewing adventure

---

## SHARE YOUR LOOK



Post your pattern and tag us  
**@simplicity\_creative\_group** and **#simplicitypatterns**  
for a chance to be featured on our social media.

Look for more PDF patterns at [simplicity.com](https://www.simplicity.com)

Have a question or need help with your sewing project call us at  
1-888-588-2700



Simplicity ©2023 a division of IG Design Group Americas Inc. • Atlanta, GA 30342 USA [www.thedesigngroup.com](https://www.thedesigngroup.com) • All Rights Reserved. [www.simplicity.com](https://www.simplicity.com) • Made in the U.S.A. Fabriqué aux États-Unis.

To be used for individual private home use only and not for commercial or manufacturing purposes. • A usage privé seulement et non à des fins commerciales ou de production en série. • Para uso privado solamente, no se puede utilizar con propósitos de comercialización o de producción en serie.