

S9868

Simplicity

1970s Vintage



Designed and printed in USA.

easy-to-sew

Very Easy

APRONS AND POTHOLDER

Suggested Fabrics: Broadcloth, Canvas, Chintz, Cotton Sateen, Duck, Gingham, Homespun, Linen, Poplin, **Potholder Padding:** Insulated Cotton Batting such as Insul - Bright®.

Notions: **View 1:** 4¼ yds. (3.9m) of ½" - ¾" (1.3cm - 1.5cm) fold-over braid. **View 2:** 2½ yds. (2.3m) of ½" - ¾" (1.3cm - 1.5cm) fold-over braid, 2½ yds. (2.7m) of 1½" (4cm) lace insertion. **View 3:** Two ¾" (1.5cm) buttons, one pkg. of ¼" (6mm) double fold bias tape (for appliqué and potholder), embroidery floss (optional), 5¼ yds. (4.8m) wide rickrack.

Sizes	S (8-10)	M (12-14)	L (16-18)	XL (20-22)
Sizes-European	34-36	38-40	42-44	46-48

Apron - View 1					
45"*	2½	2½	2¾	2¾	Yds.
115cm*	2.3	2.3	2.6	2.6	m

Apron - View 2					
45"*	2¾	2½	2½	2½	Yds.
115cm*	2.2	2.2	2.3	2.3	m

Apron - View 3					
45"*	2	2	2	2½	Yds.
115cm*	1.8	1.9	1.9	2.0	m

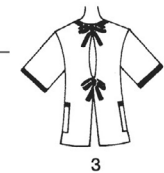
Contrast (Appliqué or Potholder)

13" x 7" (33cm x 18cm) fabric remnant
Potholder Padding: 22" - ¾ yd. (56cm - 0.3m)

FINISHED GARMENT MEASUREMENTS (Includes Design and Wearing Ease)

Finished back length from base of neck					
Apron - View 1,2	32½	33	33½	34½	Ins.

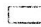
*with nap **without nap



Shop all the pattern brands you love @

Simplicity.com

5377 sewing directions

 Shaded area is right side of fabric

The metric equivalent for inches is in parenthesis: 1/4" (6mm), 5/8" (1.5cm), 4-1/2" (11.4cm), 13" (33cm).

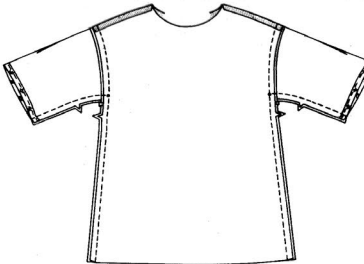
NOTE: Stitch 5/8" seams, unless otherwise stated, matching same numbered notches.

VIEW 1
apron

UNIT 1
front, back and sleeves

Stitch front to back at shoulder seams, matching small dots.
Encase lower edge of sleeve in fold-over braid.
With **RIGHT** sides together, pin sleeve to armhole edge with center small dot at shoulder seam, matching remaining small dots. Stitch between outer small dots. Press seam toward sleeve.

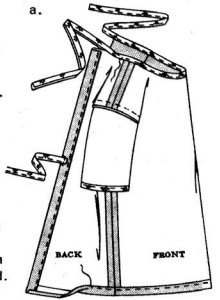
underarm seams



Pin front to back at underarm seam, matching small dots. Stitch entire underarm seam from lower edge to edge of sleeve.

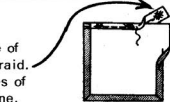
UNIT 2
hems, neck edge and tie ends

Press under 1/4" on back opening and lower edges of apron. Press back opening and lower edges to **INSIDE** along fold lines from hems. Stitch hems in place. Encase neck edge in fold-over braid, extending ends about 13" for tie ends. Continue stitching on double edges of braid. Cut 2 pieces of braid each 13" long for tie ends. Stitch double edges of each tie end. On **INSIDE**, sew a tie end to each back between small dots, as shown.

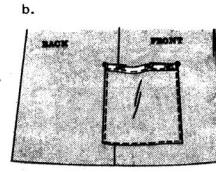


UNIT 3
pocket

a—Encase upper edge of pocket in fold-over braid. Press under raw edges of pocket along seam line.



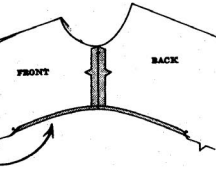
b—On **OUTSIDE**, pin pockets along pocket lines in apron, placing upper corners at medium dots, as shown. Stitch close to side and lower edges, reinforcing stitching at upper corners.



UNIT 1
front, back and armhole edges

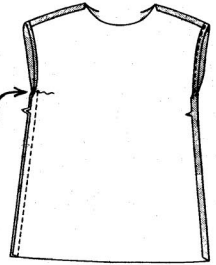
Stitch front to back at shoulder seams, matching small dots. Press under 1/4" on armhole edge between small dots.

VIEW 2
apron



side seams

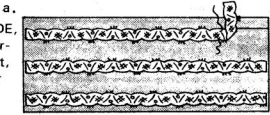
Pin front to back at side seams, matching small dots. Stitch side seams as far as small dots, reinforcing stitching at small dot. Press armhole edges to **INSIDE** along seam line. Stitch close to pressed edge.



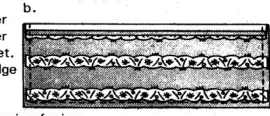
For hems, neck edge and tie ends, see view 1 unit 2.

UNIT 3
pocket

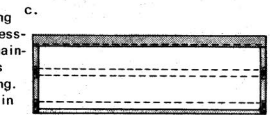
a—On **OUTSIDE**, pin lace insertion to pocket, placing upper edge of each piece, along solid line, as shown. Stitch close to both edges of insertion.



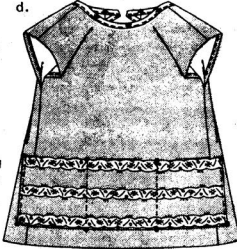
b—Press under 1/4" on upper edge of pocket. Turn upper edge to **OUTSIDE** along upper solid line, forming facing. Stitch along seam line on all raw edges; trim to 1/4".



c—Press facing to **INSIDE**, pressing under remaining raw edges along stitching. Stitch facing in place.



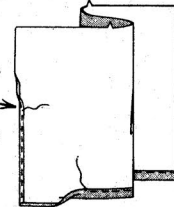
d—On **OUTSIDE**, pin pockets along pocket lines in apron, matching centers front and medium dots. Stitch close to side and lower edges, reinforcing stitching at upper corners. Stitch along stitching lines.



VIEW 3
apron

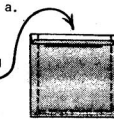
UNIT 1
preparing apron

Narrowly hem side edges of apron. Press up hem. Press under 1/4" on raw edge and stitch.

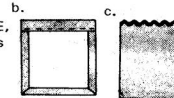


UNIT 2
pockets

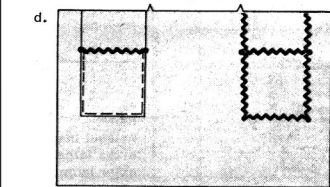
a—Press under 1/4" on upper edge of pocket. Turn upper edge to **OUTSIDE** along fold line, forming facing. Stitch along seam line on all raw edges; trim to 1/4".



b—Press facing to **INSIDE**, pressing under raw edges along stitching. Stitch facing in place.



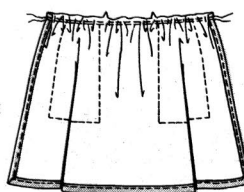
c—On **OUTSIDE**, stitch center of rick-rack along upper edge of pocket turning under ends of rick-rack at side edges.



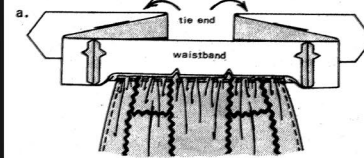
d—On **OUTSIDE**, pin pockets along pocket lines in apron, matching medium dots. Baste side and lower edges. Stitch center of rick-rack along solid lines and along finished edge of pockets, folding out fullness at corners.

gathers

Gather upper edge of apron. To gather, stitch along seam line and 1/4" **INSIDE** seam line, using a long machine-stitch.



UNIT 3
waistband and tie ends



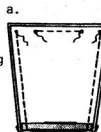
a—With **RIGHT** sides together, stitch tie ends to waistband. Pin **WRONG** side of apron to **RIGHT** side of band, matching centers, placing side edges of apron at small dots in band; as shown. Pull up machine-stitching to fit; baste. Stitch. Trim seam; press toward band.

b—Fold band and tie ends, lengthwise, **RIGHT** sides together. Stitch to small dots. Trim seams and corners.

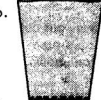
c—Turn band and tie ends. Press, pressing under seam allowance on remaining raw edge of band; trim to 1/4". Stitch over seam.

UNIT 4
bib and suspenders

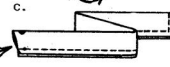
a—Press under 5/8" on lower edge of bib and bib facing; trim to 1/4". With **RIGHT** sides together, pin facing to bib, matching centers small and medium dots. Stitch side and upper edges, leaving openings between small and medium dots, as shown. Trim seams.



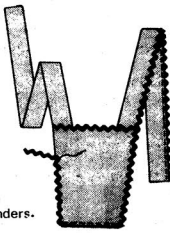
b—Turn bib; press, pressing under opening edges along seam line. Stitch lower opening edges together.



c—Fold suspenders in half, lengthwise, **RIGHT** sides together. Stitch, leaving end with small and medium dots open. Trim seam and corners.

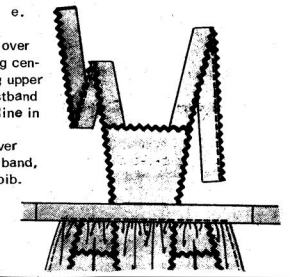


d—Turn suspenders; press. Slip raw ends between openings at upper edge of bib, matching small and medium dots. Stitch.



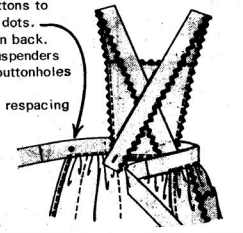
Stitch center of rick-rack along upper edge of bib. Stitch center of rick-rack along side edge of bib and along outer edge of suspenders.

e—Pin apron over bib, matching centers, placing upper edge of waistband along solid line in bib. Top-stitch over stitching on band, catching in bib.



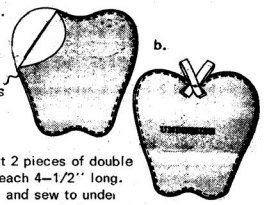
finishing

On **INSIDE**, sew buttons to waistband at small dots. Cross suspenders in back. Pin back ends of suspenders to waistband with buttonholes marking at button. Adjust suspenders, respacing buttonhole marking if necessary. Unpin suspenders and make worked or machine buttonholes. Fasten suspenders.



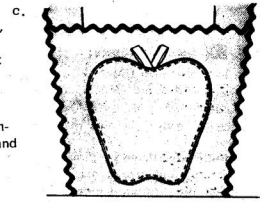
UNIT 5
applique

a—With **WRONG** sides together, pin the two applique pieces together. Stitch close to raw edges.



b—For stem, cut 2 pieces of double fold bias tape each 4-1/2" long. Form two loops and sew to under side of applique at small dot, as shown.

c—On **OUTSIDE**, pin applique to bib centering it as shown. Stitch close to outer edge. Edge may be embroidered by hand or machine.



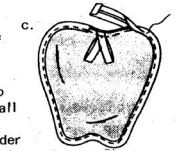
UNIT 6
potholder

a—Baste a padding section to **WRONG** side of each potholder section.



b—With padded sides together, baste the two potholder sections together.

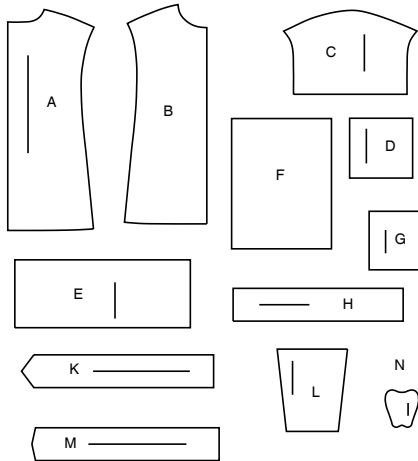
c—For stem, cut 2 pieces of double fold bias tape each 4-1/2" long. Form two loops and baste to one side of potholder at small dot, as shown. Encase raw edges of potholder in double fold bias tape turning under and lapping one end as shown.



Thank you for purchasing this Simplicity pattern. We made every effort to provide you with a high quality product.

SUPPLEMENTAL CUTTING LAYOUTS

12 PIECES



- A APRON BACK - VIEW 1,2
- B APRON FRONT - VIEW 1,2
- C SLEEVE - VIEW 1
- D POCKET - VIEW 1
- E POCKET - VIEW 2
- F APRON - VIEW 3
- G POCKET - VIEW 3
- H WAISTBAND - VIEW 3
- K TIE END - VIEW 3
- L BIB - VIEW 3
- M SASPENDER - VIEW 3
- N GUIDE - VIEW 3

General Directions

The Pattern

- SYMBOLS**
- GRAIN LINE: Place on straight grain of fabric parallel to selvage
 - PLACE SOLID LINE on fold of fabric.
 - CENTER FRONT OR BACK of garment.
 - NOTCHES
 - DOTS
 - CUTTING LINE
 - LENGTHEN OR SHORTEN LINES

SEAM ALLOWANCE: 5/8" (1.5cm) unless otherwise stated is included but not printed on MULTI-SIZE PATTERNS. Mark your size with colored felt tip pen. See chart on tissue for how to use MULTI-SIZE PATTERNS.

ADJUST IF NEEDED
Make adjustments before placing pattern on fabric.

TO LENGTHEN:
Cut pattern between lengthen or shorten lines. Spread pattern evenly, the amount needed and tape to paper.

TO SHORTEN:
At lengthen or shorten lines, make an even pleat taking up amount needed. Tape in place.

When lengthen or shorten lines are not given, make adjustments at lower edge of pattern.

Cutting/Marking

BEFORE CUTTING:
PRESS pattern pieces with a warm dry iron. PRE-SHRINK fabric by pre-washing washables or steam-pressing non-washables.

CIRCLE your cutting layout.

PIN pattern to fabric as shown in Cutting Layouts.

• FOR DOUBLE THICKNESS: Fold fabric with RIGHT sides together.

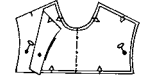
• FOR SINGLE THICKNESS: Place fabric RIGHT side up.

• FOR PILE, SHADED OR ONE WAY DESIGN FABRICS: Use "with nap" layouts

AFTER CUTTING:
Transfer markings to WRONG side of fabric before removing pattern. Use pin and chalk method or dressmaker's tracing paper and wheel.

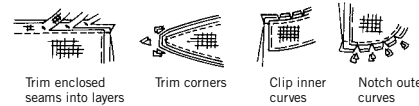
To Quick Mark:

- Snip edge of fabric to mark notches, ends of fold lines and center lines.
- Pin mark dots.



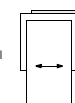
Sewing

- SEW garment following Sewing Directions.
- PIN or machine-baste seams matching notches.
- STITCH 5/8" (1.5 cm) seams unless otherwise stated.
- PRESS seams open unless otherwise indicated clipping when necessary so seams will lie flat.
- TRIM seams to reduce bulk, as shown below.



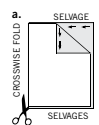
SPECIAL CUTTING NOTES

★ If layout shows a piece extending past fold, cut out all pieces except piece that extends.

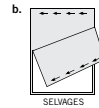


Open out fabric to single thickness. Cut extending piece on RIGHT side of fabric in position shown.

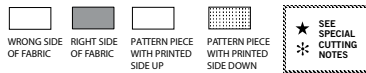
✳ Mark small arrows along both selvages indicating direction of nap or design. Fold fabric crosswise with RIGHT sides together, and cut along fold (a).



Turn one fabric layer around so arrows on both layers go in the same direction. Place RIGHT sides together (b).



Cutting Layouts

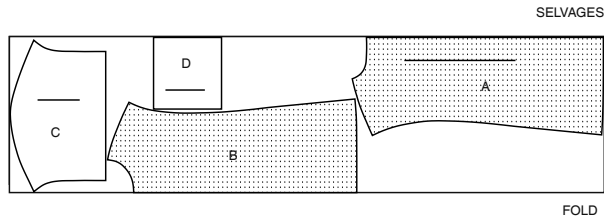


POSITION OF PATTERN PIECES MAY VARY SLIGHTLY ACCORDING TO YOUR PATTERN SIZE

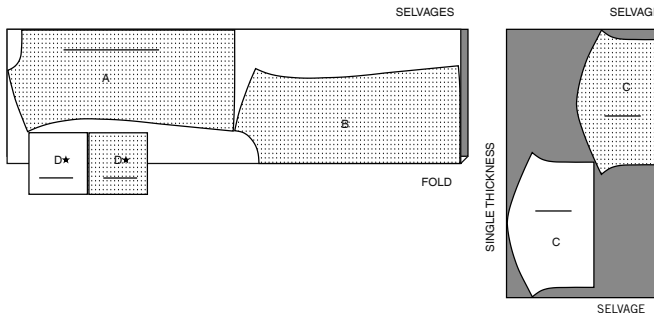
APRON - VIEW 1

USE PIECES A B C D

45" (115CM) WITH NAP SIZE S



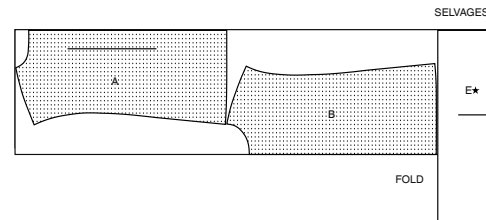
45" (115CM) WITH NAP SIZES M L XL



APRON - VIEW 2

USE PIECES A B E

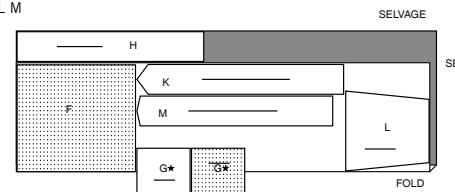
45" (115CM) WITH NAP ALL SIZES



APRON - VIEW 3

USE PIECES F G H K L M

45" (115CM) WITH NAP ALL SIZES



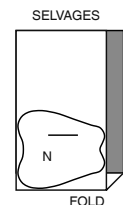
CONTRAST (APPLIQUE AND POTHOLDER)

CUT TWO OF PIECE N 13" X 7" (33CM X 18CM) REMNANT

PADDING

USE PIECE N

22" (56CM) ALL SIZES





Congrats!

You've completed your sewing adventure

**SHARE
YOUR** LOOK



Post your pattern and tag us
@simplicity_creative_group and **#simplicitypatterns**
for a chance to be featured on our social media.

Look for more PDF patterns at [simplicity.com](https://www.simplicity.com)

Have a question or need help with your sewing project call us at
1-888-588-2700



Simplicity ©2023 a division of IG Design Group Americas Inc. • Atlanta, GA 30342 USA www.thedesigngroup.com • All Rights Reserved. www.simplicity.com • Made in the U.S.A. Fabriqué aux États-Unis.

To be used for individual private home use only and not for commercial or manufacturing purposes. • A usage privé seulement et non à des fins commerciales ou de production en série. • Para uso privado solamente, no se puede utilizar con propósitos de comercialización o de producción en serie.