

S9865

Simplicity



Designed and printed in USA.



GIRLS' AND BOYS' JACKET AND PANTS

Average

Suggested Fabrics: Stretch Knits only such as Double Knits, Fleece, Jersey, Lightweight Scuba, Sweatshirting. See Pick-A-Knit® Rule. **Interfacing A:** Lightweight Fusible.

Notions: A: 18" (46cm) separating zipper (adjust to fit), 4¾ yds. (4.3m) of ½" (1.3cm) elastic, one pkg. of ½" (1.3cm) single fold bias tape. B: 2¾ yds. (2.3m) of ½" (1.3cm) elastic, ¾ yd. (0.7m) of ¾" - ½" (1cm - 1.3cm) twill tape.

Sizes	7	8	10	12	14
-------	---	---	----	----	----

BODY MEASUREMENTS: Select pattern size based on body measurements

Chest	26	27	28½	30	32	Ins.
Waist	23	23½	24½	25½	26½	"
Hip	27	28	30	32	34	"
Back-neck to waist	11½	12	12¾	13½	14½	"
Height	50	52	56	58½	61	"

Jacket A 60** 1½ 1½ 1½ 1½ 1½ Yds.

Contrast 1 (Middle Sleeve 2) 60** ¾ ¾ ¾ ¾ ¾ Yds.

Contrast 2 (Middle Sleeve 1, 3) 60** ¾ ¾ ¾ ¾ ¾ Yds.

Interfacing 20" - ¼ yd.

Pants B 60** 1½ 1½ 1½ 1½ 1½ Yds.

FINISHED GARMENT MEASUREMENTS (Includes Design and Wearing Ease)

A Chest	32¾	33¾	35	36¾	38¾	Ins.
A Waist	32¾	33¾	35	36¾	38¾	"
B Waist	30¾	31¾	33	34¾	36¾	"
B Hip	30¾	31¾	33	34¾	36¾	"

Width, each leg

Pants B 16 16¾ 17 17¾ 18 Ins.

Finished back length from base of neck

Jacket A (incl. casing) 17¾ 17¾ 18¾ 19¾ 20 Ins.

Finished side length from waist

Pants B 34¾ 36 38¾ 41 42¾ Ins.

*with nap **without nap

Moins Facile

VESTE ET PANTALON POUR FILLETES ET GARÇONNETS

Tissus Conseillés: Tricot extensibles tels que Tricot doubles, Molleton, Jersey, Scuba léger, Tissus pour sweatshirt. Reportez-vous à la règle Pick-A-Knit®. **Entoilage A :** thermocollant léger.

Mercerie: A : fermeture à glissière séparable de 46cm (à ajuster), 4.4m d'élastique de 1.3cm, 1 paquet de ruban de biais simple de 1.3cm. B : 2.3m d'élastique de 1.3cm, 0.7m de talonnette de coton de 1cm - 1.3cm.

Tailles	7	8	10	12	14
---------	---	---	----	----	----

MESURES DU CORPS: Choisissez la taille du patron basée sur les mesures du corps

Poitrine	66	68.5	72.5	76	81.5	cm
Taille	58.5	59.5	62	65	67.5	"
Hanches	68.5	71	76	81.5	86.5	"
Dos du cou à la taille	29	30.5	32.5	34.5	36	"
Hauteur	127	132	143	149	155	"

Veste A 150cm* 1.3 1.4 1.4 1.4 1.5 m

Contraste 1 (Partie milieu de la manche 2) 150cm* 0.6 0.7 0.7 0.8 m

Contraste 2 (Partie milieu de la manche 1, 3) 150cm* 0.7 0.7 0.8 0.8 m

Entoilage 51cm - 0.2m

Pantalons B 150cm* 1.3 1.4 1.4 1.5 1.5 m

MESURES DES VÊTEMENTS FINI (Motif et aisance de port compris)

A Poitrine	83	85	89	93	98	cm
A Taille	83	85	89	93	98	"
B Taille	77	80	84	88	93	"
B Hanches	77	80	84	88	93	"

Largeur, chaque jambe

Pantalons B 41 42 43 44 46 cm

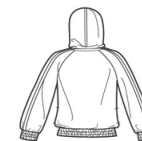
Longueur finie – dos, votre nuque à l'ourlet

Veste A (y compris coulisse) 44 45 47 49 51 cm

Longueur finie – côté, taille à l'ourlet

Pantalons B 88 91 98 104 108 cm

*avec sens **sans sens



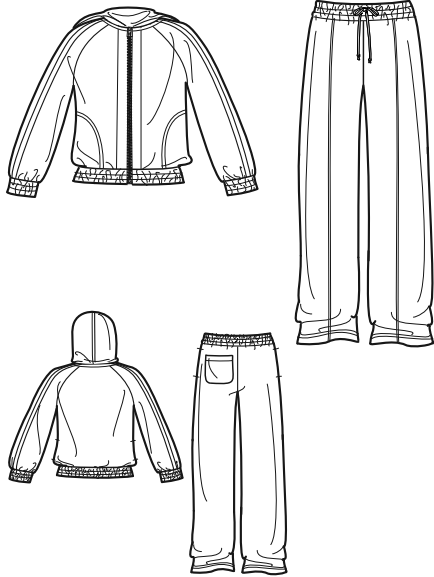
A



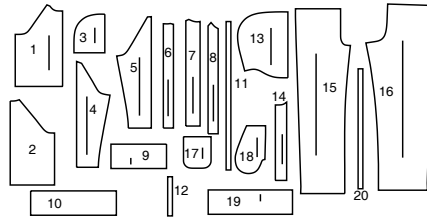
B

Simplicity®

Thank you for purchasing this Simplicity pattern. We made every effort to provide you with a high quality product.



20 PIECES



- 1 Front-A
- 2 Back-A
- 3 Pocket-A
- 4 Sleeve Front-A
- 5 Sleeve Back-A
- 6 Middle Sleeve 1-A
- 7 Middle Sleeve 2-A
- 8 Middle Sleeve 3-A
- 9 Sleeve Casing-A
- 10 Casing-A
- 11 Elastic Guide for Lower Edge-A
- 12 Elastic Guide for Sleeve-A
- 13 Hood-A
- 14 Front Facing-A
- 15 Front-B
- 16 Back-B
- 17 Back Pocket-B
- 18 Pocket-B
- 19 Casing-B
- 20 Elastic Guide for Waist-B

General Directions

The Pattern

SYMBOLS

- GRAIN LINE Place on straight grain of fabric parallel to selvage
- PLACE SOLID LINE on fold of fabric.
- CENTER FRONT OR BACK OF GARMENT.
- NOTCHES
- DOTS
- CUTTING LINE
- LENGTHEN OR SHORTEN LINES

ADJUST IF NEEDED

Make adjustments before placing pattern on fabric.

TO LENGTHEN: Cut pattern between lengthen or shorten lines. Spread pattern evenly, the amount needed and tape to paper.

TO SHORTEN: At lengthen or shorten lines, make an even pleat taking up amount needed. Tape in place.

SEAM ALLOWANCE: 5/8" (1.5cm) unless otherwise stated is included but not printed on MULTI-SIZE PATTERNS. Mark your size with colored felt tip pen. See chart on tissue for how to use MULTI-SIZE PATTERNS.

When lengthen or shorten lines are not given, make adjustments at lower edge of pattern.

Cutting/Marking

BEFORE CUTTING:

PRESS pattern pieces with a warm dry iron. PRE-SHRINK fabric by pre-washing washables or steam-pressing non-washables.

CIRCLE your cutting layout.

PIN pattern to fabric as shown in Cutting Layouts.

- FOR DOUBLE THICKNESS: Fold fabric with RIGHT sides together.
- FOR SINGLE THICKNESS: Place fabric RIGHT side up.
- FOR PILE, SHADED OR ONE WAY DESIGN FABRICS: Use "with nap" layouts

AFTER CUTTING:

Transfer markings to WRONG side of fabric before removing pattern. Use pin and chalk method or dressmaker's tracing paper and wheel.

To Quick Mark:

- Snip edge of fabric to mark notches, ends of fold lines and center lines.
- Pin mark dots.

SPECIAL CUTTING NOTES

- ★ If layout shows a piece extending past fold, cut out all pieces except piece that extends.
- ✱ Mark small arrows along both selvages indicating direction of nap or design. Fold fabric crosswise with RIGHT sides together, and cut along fold (a).

Open out fabric to single thickness. Cut extending piece on RIGHT side of fabric in position shown.

Turn one fabric layer around so arrows on both layers go in the same direction. Place RIGHT sides together (b).

Sewing

- SEW garment following Sewing Directions.
- PIN or machine-baste seams matching notches.
- STITCH 5/8" (1.5 cm) seams unless otherwise stated.
- PRESS seams open unless otherwise indicated clipping when necessary so seams will lie flat.
- TRIM seams to reduce bulk, as shown below.

Cutting Layouts

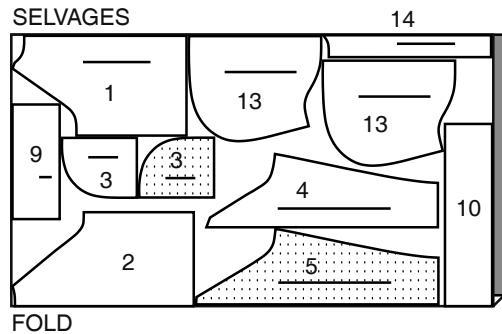
- WRONG SIDE OF FABRIC
- RIGHT SIDE OF FABRIC
- PATTERN PIECE WITH PRINTED SIDE UP
- PATTERN PIECE WITH PRINTED SIDE DOWN
- ★ SEE SPECIAL CUTTING NOTES

POSITION OF PATTERN PIECES MAY VARY SLIGHTLY ACCORDING TO YOUR PATTERN SIZE

JACKET A

USE PIECES 1 2 3 4 5 9 10 13 14

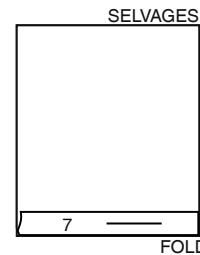
60" (150CM) WITH NAP ALL SIZES



CONTRAST 1 SLEEVE BANDS COLOR #1

USE PIECES 7

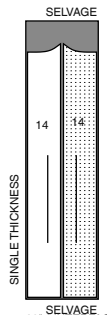
60" (150CM) WITH NAP ALL SIZES



INTERFACING

USE PIECES 14

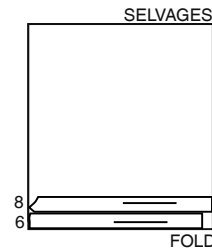
20" (51CM) ALL SIZES



CONTRAST 2 SLEEVE BANDS COLOR #2

USE PIECES 6 8

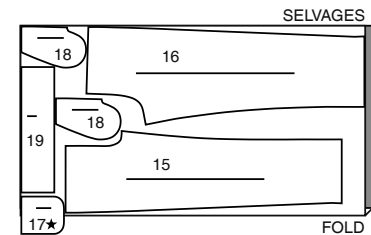
60" (150CM) WITH NAP ALL SIZES



PANT B

USE PIECES 15 16 17 18 19

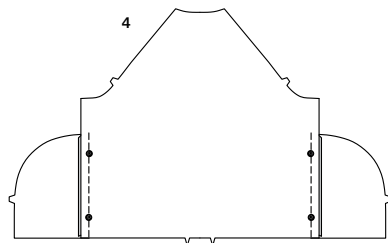
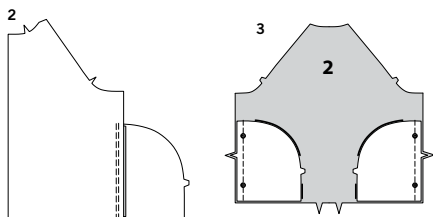
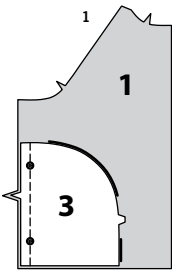
60" (150CM) WITH NAP ALL SIZES



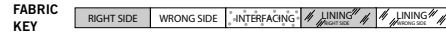
SEWING TUTORIALS



Build your skills viewing short, easy-to-follow videos at [simplicity.com/sewingtutorials](https://www.simplicity.com/sewingtutorials)



Sewing Directions



Sewing methods in **BOLD TYPE** have Sewing Tutorial Video available. Scan QR CODE to watch videos:

STAYSTITCH - see how to do stay-stitching video.

TOPSTITCH - see how to topstitch video.

UNDERSTITCH - see how to understitch video.

OPTIONAL FOR HEMS: see how to apply seam binding video.

SLIPSTITCH - see how to slipstitch video.

FINISH - Stitch 1/4" (6mm) from raw edge and finish with one of the following: (1) Pink OR (2) Overcast OR (3) Turn in along stitching and stitch close to fold OR (4) Overlock.

INTERFACING- Pin interfacing to **WRONG** side of fabric. Fuse interfacing in place following manufacturer's directions.

JACKET A

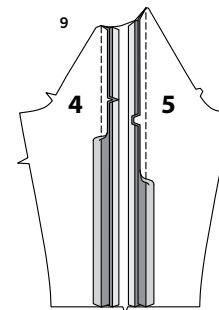
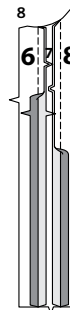
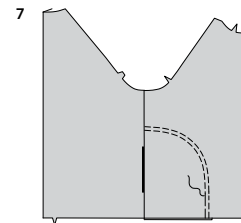
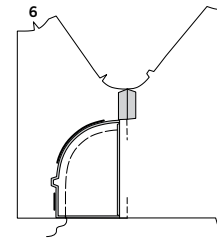
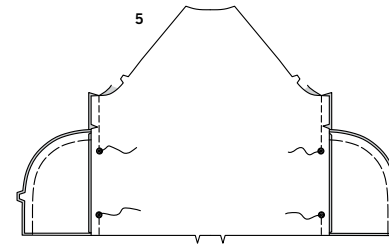
FRONT, BACK AND SLEEVE

1. With **RIGHT** sides together, pin one pocket (3) section to each front (1) section, matching large dots and notches. Stitch. Trim. **UNDERSTITCH** pocket between large dots, as shown.

2. Press seam toward pocket pressing pocket out.

3. With **RIGHT** sides together, pin one remaining pocket section to back (2) at each side, matching large dots and notches. Stitch. Trim.

4. Press seam toward pocket pressing pocket out.



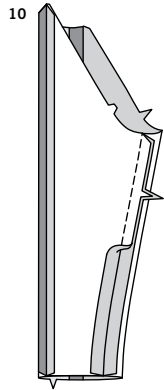
5. Stitch fronts to back at sides, leaving open between large dots. Baste pocket edges together. Clip back seam allowances at upper pocket edges.

6. Turn pockets toward front. Press. Baste to front along seamlines.

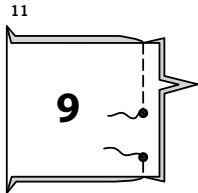
7. Stitch front along stitching lines. **TOPSTITCH** 1/4" (6mm) from first stitching.

8. Pin middle sleeve (6), (7) and (8) sections together, matching notches. Stitch.

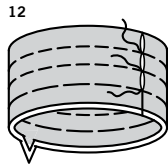
9. Pin middle sleeve section to sleeve front (4) and sleeve back (5). Stitch.



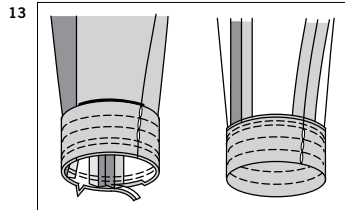
10. Stitch sleeve seam.



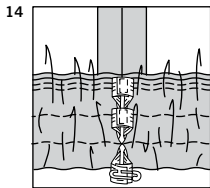
11. Stitch ends of sleeve casing (9) together, leaving open between small dots.



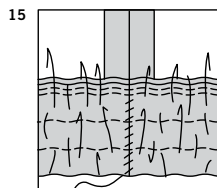
12. With WRONG sides together, fold sleeve casing along foldline. Press. Baste raw edges. Stitch sleeve casing along stitching lines.



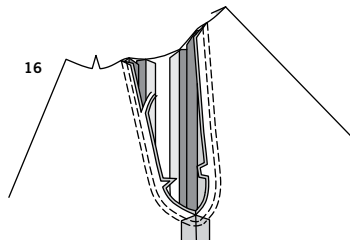
13. On OUTSIDE, pin casing to lower edge of sleeve, having raw edges even, matching under arm seams. Stitch. Stitch again 1/4" (6mm) from first stitching within the seam allowance. Trim seam close to second stitching. Press seam toward sleeve, pressing band out.



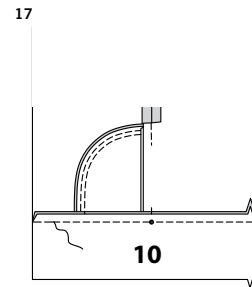
14. Cut three pieces of elastic the length of elastic guide for sleeve (12). Insert elastic through openings in casing. Overlap ends and hold with a safety pin.



15. Stitch ends of elastic together securely. SLIPSTITCH openings. Distribute fullness evenly.

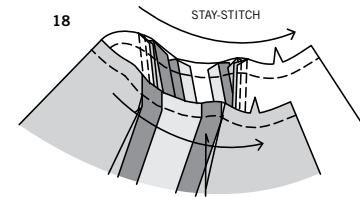


16. With RIGHT sides together, pin sleeve to armhole edge, matching underarm seams and notches. Baste. Stitch. Stitch again 1/4" (6mm) from first stitching. Trim seam close to stitching. Press only seam allowance. Turn seam toward sleeve.

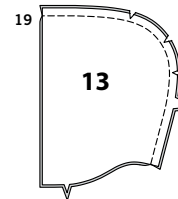


CASING AND HOOD

17. With RIGHT sides together, pin casing to lower edge of jacket, matching centers and notches, placing small dots at side seams. Baste. Stitch front edges to 1 1/2" (3.8cm). Press seam up.

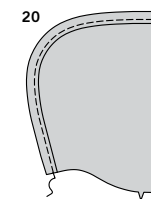


18. STAYSTITCH neck edge 1/2" (1.3cm) from cut edge.

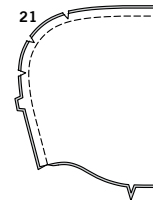


19. With RIGHT sides together, stitch two hood (13) sections together at center back seam. Clip curves.

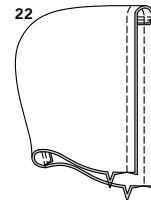
NOTE: Remaining hood sections will be used as facing.



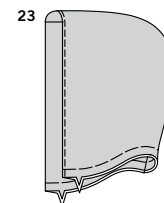
20. Press hood seam to LEFT side. On OUTSIDE, TOP-STITCH LEFT center back seam, catching in seam allowance on INSIDE.



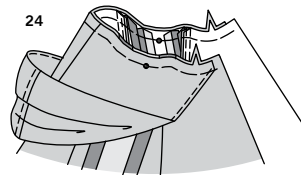
21. With RIGHT sides together, stitch two hood FACING (13) sections together at center back seam. Clip curves.



22. With RIGHT sides together, pin hood sections together, matching large dots and seams. Stitch front edge. Trim. UNDERSTITCH facing.

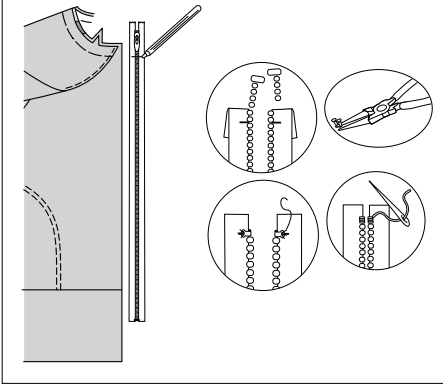


23. Turn hood RIGHT side out. Press. Baste raw edges.

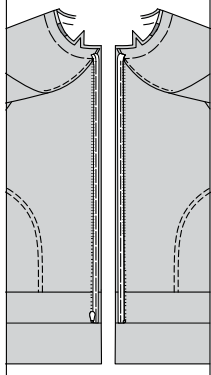


24. With RIGHT sides together, pin hood to neck edge, placing small dots at shoulder seams, matching centers and large dots. Baste, clipping to stay-stitching if necessary.

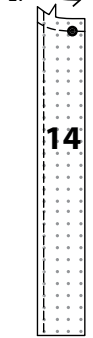
25



26



27



ZIPPER AND FINISHING

NOTE: It may be necessary to shorten zipper. To make new zipper stop, place closed zipper along opening edge and zipper stop even with foldline. Mark placement of new zipper stop 1/8" (3mm) below upper seamline.

25. Remove teeth above marking for new zipper stop. Bend a straight metal eye with pliers and sew securely to each tape at new marking. OR make several whipstitches over tape at marking.

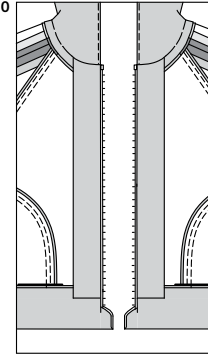
26. Open and separate zipper. On OUTSIDE, pin zipper, face down, along front opening edges, placing zipper stop even with foldline and zipper teeth over seamline. Baste.

27. Apply **INTERFACING** to front facing (14). **FINISH** long unnotched edge without dot, as shown. **STAYSTITCH** neck edge of facing, 1/2" (1.3cm) from cut edge.

28. Pin facings to casing, having front edges even, as shown. Stitch. Press seams up.

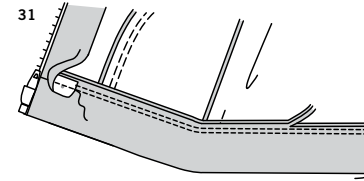
29. With **RIGHT** sides together, fold casing along foldline. Pin front facing and casing to front opening and neck edges, over zipper, clipping neck edge of facing where necessary. Baste along seamline from casing seam to neck edge. Stitch front opening edge along basting, using a zipper foot. Stitch neck edge.

30



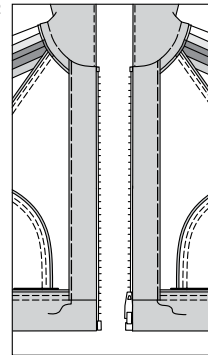
30. Turn facings to inside and zipper teeth out, turning in casing along foldline. Press, pressing in seam allowance on front casing edges.

31



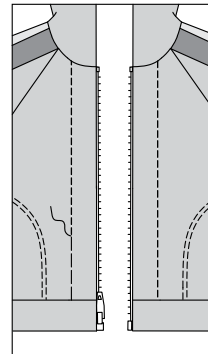
31. Open out facings at lower edge. With **WRONG** sides together, pin lower casing edges together, matching centers, notches and small dots. Stitch, connecting with previous stitching. Stitch again 1/4" (6mm) away in seam allowance. Trim close to stitching.

32

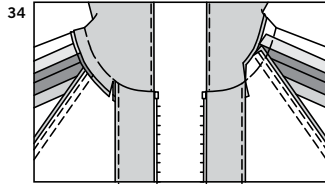


32. Baste facings in place close to finished edges.

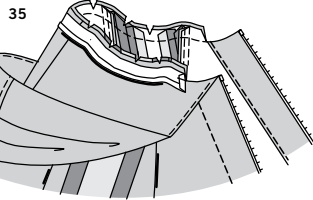
33



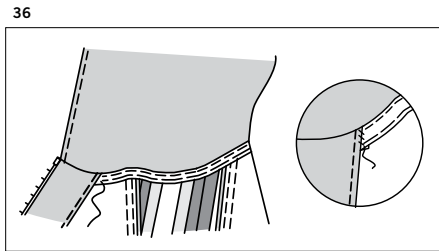
33. On **OUTSIDE**, **TOPSTITCH** as basted.



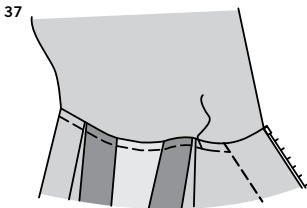
34. Clip neck seam allowances at facing edges, as shown.



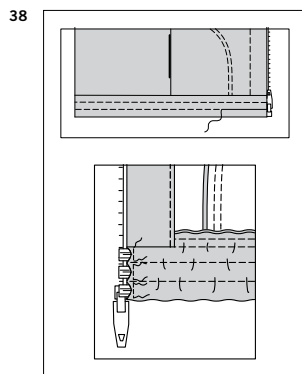
35. Open out one edge of single fold bias tape. With RIGHT sides together, pin tape to neck edge having crease 5/8" (1.5cm) from raw edge, turning under ends at clips. Stitch. Trim seam; clip curves. **UNDERSTITCH.**



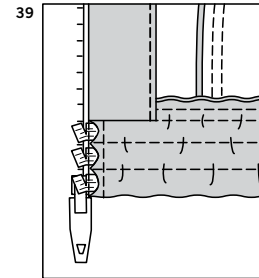
36. Turn tape to INSIDE; press. Baste close to inner edge of tape. **SLIPSTITCH** ends.



37. On OUTSIDE, top-stitch as basted.



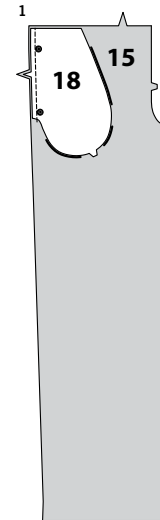
38. On OUTSIDE, stitch casing along stitching lines. Cut three pieces of elastic the length of elastic guide for lower edge (11). Insert elastic through openings in casing, extending ends 5/8" (1.5cm) beyond casing edges. To secure elastic, stitch across ends of casing to lower edge, as shown. Distribute fullness evenly. **TIP**-To secure elastic so it won't twist in wearing, stitch through all thicknesses of casing in the groove of each seam.



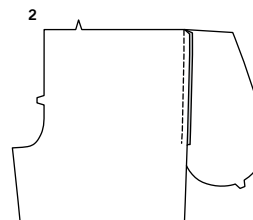
39. Trim ends of elastic close to stitching.

PANTS B

FRONT AND BACK



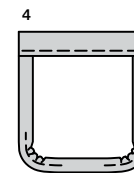
1. With RIGHT sides together, pin one pocket (18) to each pants front (15) at side, matching large dots, having raw edges even. Stitch in 3/8" (1cm) seam.



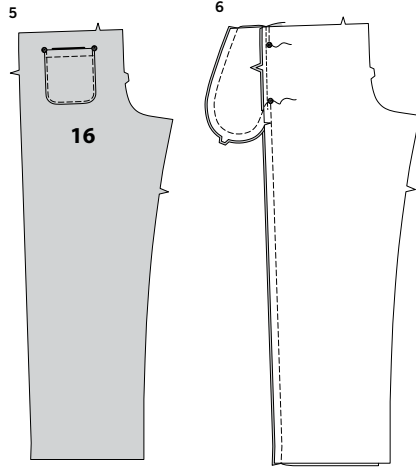
2. Press seam toward pocket, pressing pocket out.



3. Press under 1/4" (6mm) on upper edge of back pocket (17). Turn upper edge to OUTSIDE along fold line, forming facing. Stitch pocket along seam line on raw edges. To ease curved edge of pocket, stitch 1/4" (6mm) INSIDE the seam line, using a long machine-stitch. Trim seam allowance in the facing area to 1/4" (6mm).

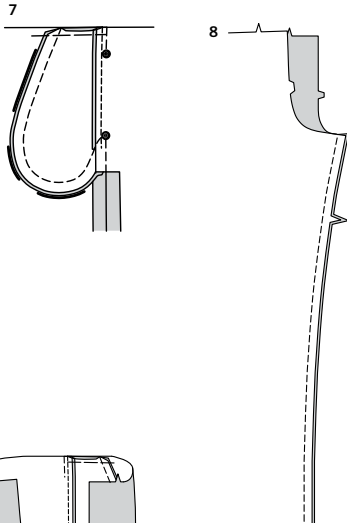


4. Turn corners RIGHT side out, turning facing to WRONG side; press, pressing under raw edges along stitching. Pull up ease stitches to shape the curve. To eliminate bulk, notch out the fullness in the seam allowance along the curves as far as ease stitches. Stitch facing close to inner edge.



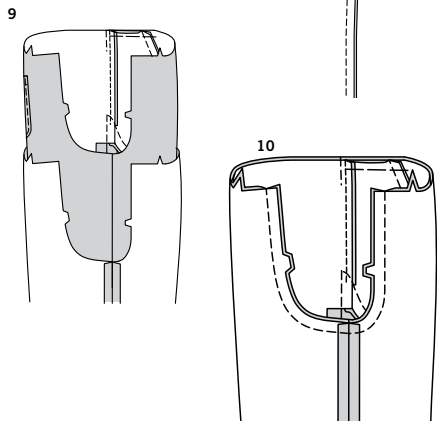
5. On **OUTSIDE**, pin back pocket to left back (16), placing corners at large dots. Stitch close to side and lower edges.

6. Stitch remaining pockets to pants back sections, in same manner as for front.
With **RIGHT** sides together, pin front to back at side seams, matching large dots.
Stitch side seams, leaving an opening between large dots.
Stitch pocket edges together from side seam to upper edge.
Clip pants back seam allowance below pocket.



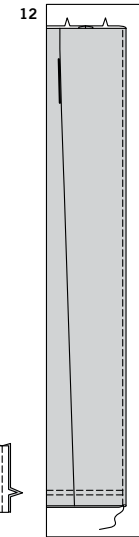
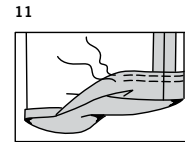
7. Press seam open below clips. Press pocket toward front. Baste upper edge of pocket to front close to upper edge.

8. Stitch front to back at inner leg seams.



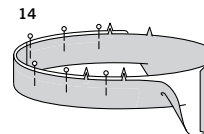
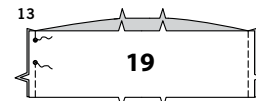
9. With **RIGHT** sides together, insert one leg **INSIDE** the other.

10. With **RIGHT** sides together, pin center seam, matching inner leg seams and notches. Stitch. To reinforce seam, stitch again over first stitching.



11. Turn up 1 1/2" (3.8cm) hem on lower edge of pants.
Turn 1/4" (6mm) on raw edge of hem to wrong side; press. Stitch close to inner edge of hem. Stitch again 1/4" (6mm) below previous stitching.

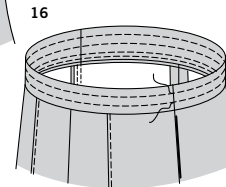
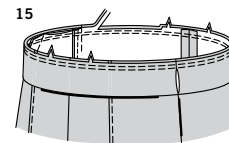
12. To form tuck in front, with **WRONG** sides together, fold front along solid line. Stitch close to fold. Do not press tuck.



CASING AND FINISHING

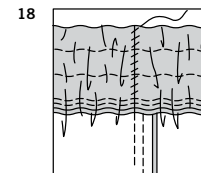
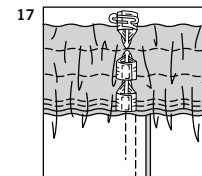
13. With **RIGHT** sides together, stitch casing (19) sections together at side edges, leaving open between small dots.

14. Fold casing in half, with **WRONG** sides together and raw edges even; press. Pin. The side with the opening is the underside of the casing.



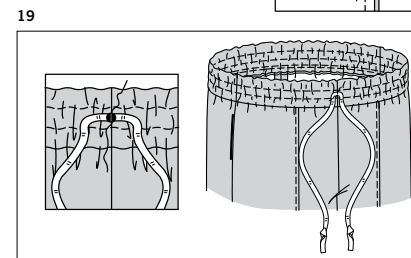
15. With the underside facing you, pin casing to upper edge of pants, having raw edges even, matching centers and side seams. Stitch. Stitch again 1/4" (6mm) from first stitching within the seam allowance.
Trim seam close to second stitching. Press seam toward pants, pressing casing out.

16. On **OUTSIDE**, stitch casing along stitching lines.



17. Cut three pieces of elastic the length of elastic guide for waist (20). Insert elastic. Overlap ends and hold with a safety pin. Stitch ends of elastic together securely.

18. **SLIPSTITCH** opening edges of casing together. Distribute fullness evenly. **TIP**-To secure elastic so it won't twist in wearing, stitch through all thicknesses of casing in the groove of each seam.



19. For tie, cut a piece of twill tape 21" (53.3cm) long. Knot ends. Center tie horizontally over small dot on front casing. Stitch along center through all thicknesses. Tie in a bow.



Congrats!

You've completed your sewing adventure

**SHARE
YOUR** LOOK



Post your pattern and tag us
@simplicity_creative_group and **#simplicitypatterns**
for a chance to be featured on our social media.

Look for more PDF patterns at [simplicity.com](https://www.simplicity.com)

Have a question or need help with your sewing project call us at
1-888-588-2700



Simplicity ©2023 a division of IG Design Group Americas Inc. • Atlanta, GA 30342 USA www.thedesigngroup.com • All Rights Reserved. www.simplicity.com • Made in the U.S.A. Fabriqué aux États-Unis.

To be used for individual private home use only and not for commercial or manufacturing purposes. • A usage privé seulement et non à des fins commerciales ou de production en série. • Para uso privado solamente, no se puede utilizar con propósitos de comercialización o de producción en serie.