

S9863

Simplicity



Designed and printed in USA.



Average

CHILDREN'S AND GIRLS' TOPS AND PANTS

Suggested Fabrics: A,B: Stretch Knits only such as Cotton Lycra, ITY, Rib Knit. See Pick-A-Knit® Rule. **Contrast A,B:** Crepe de Chine, Dotted Swiss, Double Georgette, Embroidered Mesh, Lace, Novelty Sheer, Silky Types. **C:** Cotton Blends, Gabardine, Lightweight Denim, Linen Blends, Stretch Wovens. **Lining C:** Cotton Blends, Polyester Blends. **Interfacing:** Lightweight Fusible.

Notions: C: One 7" (18cm) invisible zipper (adjust to fit).

Sizes	3	4	5	6	7	8	10	12	14
-------	---	---	---	---	---	---	----	----	----

BODY MEASUREMENTS: Select pattern size based on body measurements

Chest	22	23	24	25	26	27	28½	30	32	Ins.
Waist	20½	21	21½	22	23	23½	24½	25½	26½	"
Hip	—	24	25	26	27	28	30	32	34	"
Back-neck to waist	9	9½	10	10½	11½	12	12¾	13½	14½	"
Approx. Height	38	41	44	47	50	52	56	58½	61	"

Top A	60**	%	%	%	%	%	%	%	%	%	Yds.
Contrast (Sleeves)	45/60**										

Top B	60**	%	%	%	%	%	%	%	%	%	Yds.
Contrast (Sleeves)	45/60**										

Pants C	45**	1%	1%	1%	1%	1%	1%	1%	1%	2%	Yds.
	60**	¾	¾	¾	1	1	1	1	1	1	"

Lining (Pockets)
45** - ½ yd.
60** - ¾ yd.

Interfacing
20" - ¾ yd.

FINISHED GARMENT MEASUREMENTS (Includes Design and Wearing Ease)

A,B Chest	22	23	24	25	26	27	28½	30	32	Ins.
A,B Waist	20	21	22	23	23	24	25½	27	29	"
C Waist	19½	20½	21½	22½	22½	23½	24	25½	27½	"
C Hip	24	25	26	27	29½	30½	32	33½	35½	"
Width, lower edge										
Top A,B	22	23	24	25	26	27	28½	30	32	Ins.
Width, each leg										
Pants C	14%	15%	15%	16%	16%	17%	18	18%	19½	Ins.
Finished back length from base of neck										
Top A,B	13%	13%	14%	14%	16%	17%	18	18%	19½	Ins.
Finished side length from waist										
Pants C	23½	25	26½	28	28½	29½	32	34½	36	Ins.

*with nap **without nap

Moins Facile

HAUTS ET PANTALON POUR ENFANTS ET FILLETES

Tissus Conseillés: A, B : Lycra de coton, ITY (tricotés interlock en fil retors), Tricot à côtes. Reportez-vous à la règle Pick-A-Knit®. **Contraste A, B :** Crêpe de Chine, Plumetis, Double Georgette, Tissu à mailles brodé, Dentelle, Tissu transparent de fantaisie, Sortes de soie. **C :** Cottonnades, Gabardine, Denim léger, Toile de lin mélangé, Tissus tissés extensibles. **Doublure C :** Cottonnades, Tissus mélangés de polyester. **Entoilage :** thermocollant léger.

Mercurie: C : 1 fermeture à glissière invisible de 18 cm (à ajuster).

Tailles	3	4	5	6	7	8	10	12	14
---------	---	---	---	---	---	---	----	----	----

MESURES DU CORPS: Choisissez la taille du patron basée sur les mesures du corps

Poitrine	56	58	61	64	66	69	73	76	81	cm
Taille	52	53	55	56	58	60	62	65	67	"
Hanches	—	61	64	66	69	71	76	81	87	"
Dos du cou à la taille	23	24	25.5	27	29.5	31	32.5	34.5	36	"
Taille approx.	97	104	112	119	127	132	142	149	155	"

Haut A	150cm*	0.6	0.6	0.6	0.6	0.6	0.6	0.7	0.7	0.7	m
Contraste (Manches)	115/150cm*										

Haut B	150cm*	0.6	0.6	0.6	0.6	0.6	0.6	0.7	0.7	0.7	m
Contraste (Manches)	115/150cm*										

Pantalon C	115cm*	1.0	1.0	1.0	1.1	1.1	1.5	1.6	1.7	1.9	m
	150cm*	0.8	0.8	0.8	0.9	1.0	1.0	1.0	1.1	1.1	"

Doublure (Poches)
115cm* - 0.5m
51cm - 0.3m

Entoilage

MESURES DES VÊTEMENTS FINI (Motif et aisance de port compris)

A,B Poitrine	56	58	61	64	66	69	72	76	81	cm
A,B,C Taille	51	53	56	58	58	61	65	69	74	"
C Taille	50	52	55	57	57	60	61	65	70	"
C Hanches	61	64	66	69	75	77	81	85	90	"
Largeur à l'ourlet										
Haut A,B	56	58	61	64	66	69	72	76	81	cm
Largeur, chaque jambe										
Pantalon C	37	39	40	41	43	44	46	48	50	cm
Longueur finie – dos, votre nuque à l'ourlet										
Haut A,B	34	35	36	37	43	44	46	48	50	cm
Longueur finie – côté, taille à l'ourlet										
Pantalon C	60	64	67	71	72	75	81	88	91	cm

*avec sens **sans sens



Use the 1 inch (2.54cm) box to ensure you are using rule at 100%
Utilisez la boîte de 2.54 cm pour vous assurer d'utiliser la règle à 100%.
Utilizar un cuadrado de 2.54 cm para asegurarse de estar usando la regla al 100%.

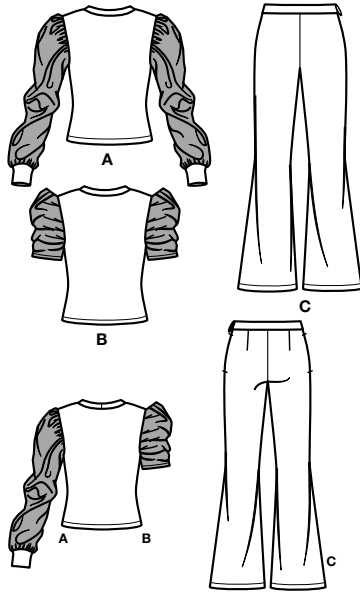
PICK-A-KNIT® RULE

FOR THIS PATTERN - 4" (10 cm) OF KNIT FABRIC MUST STRETCH CROSSWISE FROM HERE
POUR CE PATRON - LE JERSEY DOIT S'ETIRER DANS LA LARGEUR DE 4" (10 cm) DEPUIS ICI
PARA ESTE PATRON - LAS MALLAS DEBEN ESTIRARSE A LO ANCHO POR 4" (10 cm) DESDE AQUI

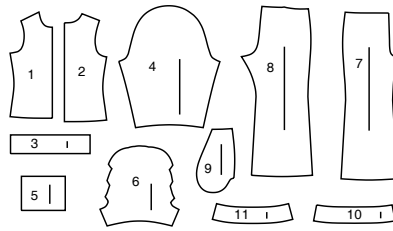
When using the Pick-A-Knit® rule to measure your fabrics stretch capacity, rule must be viewed or printed at 100%.
Quand vous utilisez la règle Pick-A-Knit® pour mesurer la capacité d'élasticité des tissus, la règle doit être visible ou imprimée à 100%.
Al utilizar la regla Pick-A-Knit® para medir la capacidad de elasticidad de las telas, la regla debe estar visible o impresa al 100%.

Simplicity®

Thank you for purchasing this Simplicity pattern. We made every effort to provide you with a high quality product.



11 PIECES



- 1 Front-A,B
- 2 Back-A,B
- 3 Neckband-A,B
- 4 Sleeve-A
- 5 Sleeve Band-A
- 6 Sleeve-B
- 7 Front-C
- 8 Back-C
- 9 Pocket-C
- 10 Front Waistband-C
- 11 Back Waistband-C

General Directions

The Pattern

- SYMBOLS**
- GRAIN LINE Place on straight grain of fabric parallel to selvage
 - PLACE SOLID LINE on fold of fabric.
 - CENTER FRONT OR BACK of garment.
 - NOTCHES
 - DOTS
 - CUTTING LINE
 - LENGTHEN OR SHORTEN LINES

SEAM ALLOWANCE: 5/8" (1.5cm) unless otherwise stated is included but not printed on MULTI-SIZE PATTERNS. Mark your size with colored felt tip pen. See chart on tissue for how to use MULTI-SIZE PATTERNS.

ADJUST IF NEEDED
Make adjustments before placing pattern on fabric.

TO LENGTHEN:
Cut pattern between lengthen or shorten lines. Spread pattern evenly, the amount needed and tape to paper.

TO SHORTEN:
At lengthen or shorten lines, make an even pleat taking up amount needed. Tape in place.

When lengthen or shorten lines are not given, make adjustments at lower edge of pattern.

Cutting/Marking

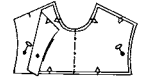
BEFORE CUTTING:
PRESS pattern pieces with a warm dry iron. PRE-SHRINK fabric by pre-washing washables or steam-pressing non-washables.

CIRCLE your cutting layout.
PIN pattern to fabric as shown in Cutting Layouts.

- FOR DOUBLE THICKNESS: Fold fabric with RIGHT sides together.
- FOR SINGLE THICKNESS: Place fabric RIGHT side up.
- FOR PILE, SHADED OR ONE WAY DESIGN FABRICS: Use "with nap" layouts

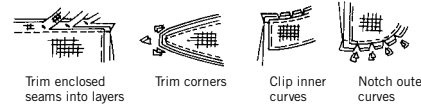
AFTER CUTTING:
Transfer markings to WRONG side of fabric before removing pattern. Use pin and chalk method or dressmaker's tracing paper and wheel.

- To Quick Mark:**
- Snip edge of fabric to mark notches, ends of fold lines and center lines.
 - Pin mark dots.



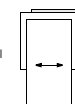
Sewing

- SEW garment following Sewing Directions.
- PIN or machine-baste seams matching notches.
- STITCH 5/8" (1.5 cm) seams unless otherwise stated.
- PRESS seams open unless otherwise indicated clipping when necessary so seams will lie flat.
- TRIM seams to reduce bulk, as shown below.

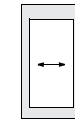


SPECIAL CUTTING NOTES

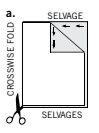
★ If layout shows a piece extending past fold, cut out all pieces except piece that extends.



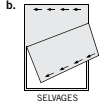
Open out fabric to single thickness. Cut extending piece on RIGHT side of fabric in position shown.



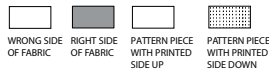
✱ Mark small arrows along both selvages indicating direction of nap or design. Fold fabric crosswise with RIGHT sides together, and cut along fold (a).



Turn one fabric layer around so arrows on both layers go in the same direction. Place RIGHT sides together (b).



Cutting Layouts



POSITION OF PATTERN PIECES MAY VARY SLIGHTLY ACCORDING TO YOUR PATTERN SIZE

CHILDREN'S / GIRLS' SIZES

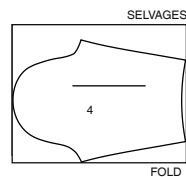
TOP A USE PIECES 1 2 3 5

60" (150CM)
WITH NAP
ALL SIZES



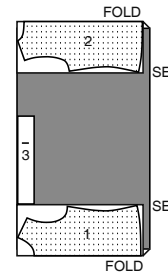
CONTRAST A: SLEEVES USE PIECE 4

45" TO 60" (115CM TO 150CM)
WITH NAP
ALL SIZES



TOP B USE PIECES 1 2 3

60" (150CM)
WITH NAP
ALL SIZES



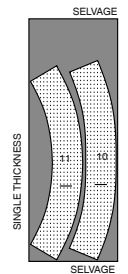
CONTRAST B: SLEEVES USE PIECE 6

45" TO 60" (115CM TO 150CM)
WITH NAP
ALL SIZES



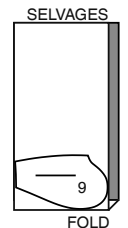
CHILDREN'S / GIRLS' FUSIBLE INTERFACING C USE PIECES 10 11

20" (51CM)
ALL SIZES



CHILDREN'S / GIRLS' LINING C USE PIECE 9

45" (115CM)
WITHOUT NAP
ALL SIZES



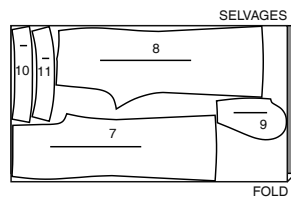
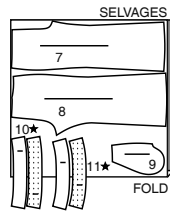
CUTTING LAYOUTS CONTINUED ON PAGE 2

S9863

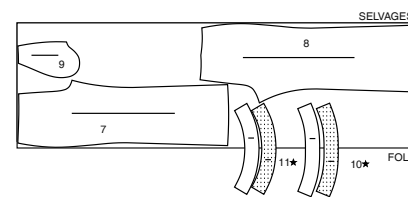
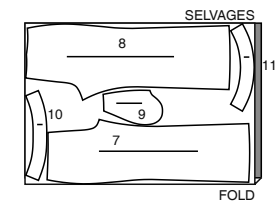
2 of 4

CHILDREN'S PANTS C

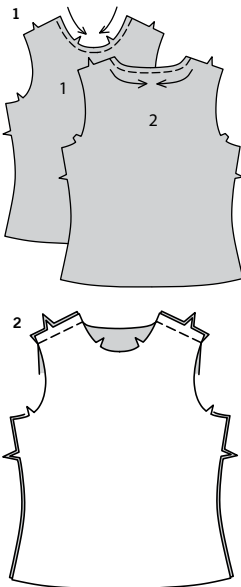
USE PIECES 7 8 9 10 11

45" (115CM)
WITH NAP
SIZES 3 4 5 660" (150CM)
WITH NAP
SIZES 3 4 5 6**GIRLS' PANTS C**

USE PIECES 7 8 9 10 11

45" (115CM)
WITH NAP
SIZES 7 8 10 12 1460" (150CM)
WITH NAP
SIZES 7 8 10 1 14

SEWING TUTORIALS

Build your skills viewing short, easy-to-follow videos at [simplicity.com/sewingtutorials](https://www.simplicity.com/sewingtutorials)**Sewing Directions**

FABRIC KEY

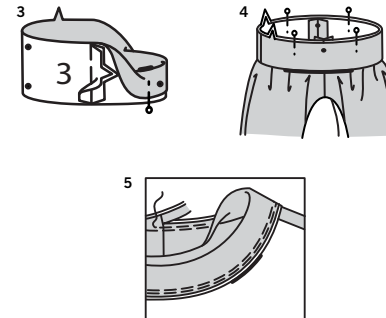
RIGHT SIDE WRONG SIDE INTERFACING LINING LINING

Read **General Directions** on page 1 before you begin.Sewing methods in **BOLD TYPE** have Sewing Tutorial Video available. Scan QR CODE to watch videos:**DART** - see **Darts**: "sewing flat dart" video**EASE/GATHER** - see **Gathering**: "sewing two row gathers" video.**INVISIBLE ZIPPER** - see **Zipper**: "sewing an invisible zipper" video.**REINFORCE** - see **Machine Stitches**: "how to reinforce" video.**SLEEVE** - see **Armholes/Sleeves**: "sewing a set in sleeve" video.**STAYSTITCH** - see **Machine Stitches**: "how to do stay-stitching" video.**UNDERSTITCH** - see **Machine Stitches**: "how to understitch" video.**PATTERN PIECES WILL BE IDENTIFIED BY NUMBERS THE FIRST TIME THEY ARE USED.****STITCH SEAMS WITH RIGHT SIDES TOGETHER UNLESS OTHERWISE STATED.****NOTE: Under each sub-heading, the first view will be illustrated, unless otherwise illustrated.****TOP A, B**

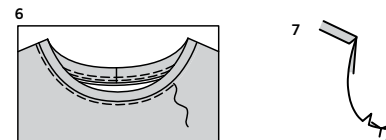
- FOR KNITS
- Use a ball point or stretch needle.
- Decrease pressure on presser foot for heavy sweater knits; increase pressure for lingerie knits.
- Stretch knits need seams that are supple enough to "give" with the fabric. You can sew them with straight stitches (stretching the fabric slightly as you sew), narrow zigzag stitches or one of the stretch stitches built into many conventional machines, or on your serger.
- Some knits require very little or no pressing while sewing. Use the appropriate temperature setting. Press lightly or use steam.
- Use a twin sewing machine needle for a double stitched hem.

FRONT AND BACK

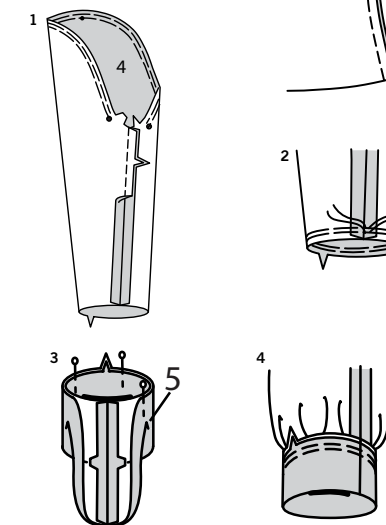
1. **STAYSTITCH** neck edge of Front (1) and Back (2).
2. Pin front to back at shoulders; stitch.

NECK BAND

3. Stitch center back seam of Neckband (3). Fold band in half lengthwise, with wrong sides together; press. Pin.
4. On outside, pin band to neck edge, matching centers, placing dots at shoulder seams and having raw edges even.
5. Stitch, stretching band to fit. Stitch again 1/4" (6mm) away from first stitching within the seam allowance. Trim seam close to second stitching. Press seam toward top, pressing band up.



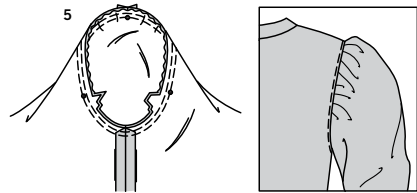
6. On outside, stitch top close to neck seam.
7. Stitch front to back at side seams.

SLEEVE VIEW A

1. **GATHER** cap of Sleeve (4) between large dots. Stitch sleeve seam.
2. **GATHER** lower edge of SLEEVE.
3. Stitch seam of Sleeve Band (5), matching double notches. Fold band in half lengthwise, with wrong sides together; press. Pin.
4. On outside, pin band to lower edge of sleeve, matching seams and notches. Pull up gathering stitches to fit. Stitch. Stitch again 1/4" (6mm) away from first stitching within the seam allowance. Trim seam close to second stitching. Press seam toward top, pressing band out.

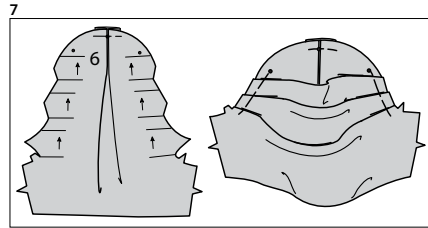
S9863

3 of 4

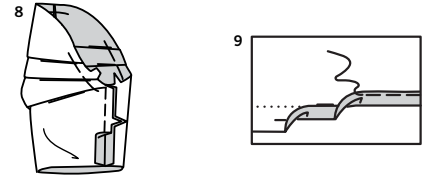


5. With right sides together, pin sleeve into armhole with small dot at shoulder seam, matching underarm seams and notches. Adjust gathers; baste. Stitch. Stitch again 1/4" (6mm) away in seam allowance. Trim close to second stitching. Press seams towards top, pressing band up.

6. On outside, stitch top close to armhole seam.

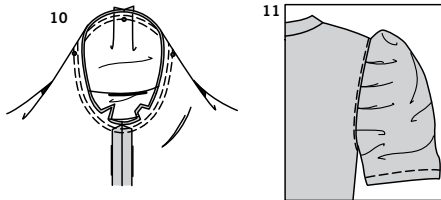
VIEW B

7. To make pleats on Sleeve (6), on outside, fold along solid lines. Bring folds to broken lines in direction of arrows; pin. Baste across raw edges.



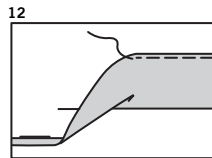
8. Stitch sleeve seam.

9. Turn up a 3/4" (2cm) hem on lower edge of sleeve. To form narrow hem, tuck under raw edge to meet crease; press. Stitch hem in place.

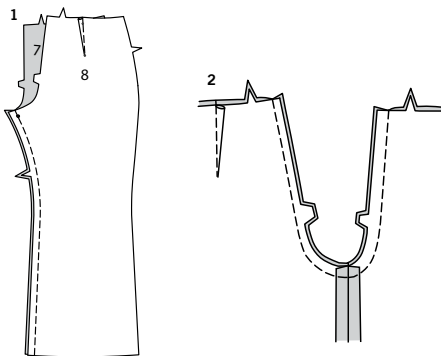


10. With right sides together, pin sleeve into armhole with center small dot at shoulder seam, matching underarm seams, notches and remaining small dots. Baste. Stitch. Stitch again 1/4" (6mm) away in seam allowance. Trim close to second stitching. Turn seam allowances toward sleeve.

11. On outside, stitch top close to armhole seam.

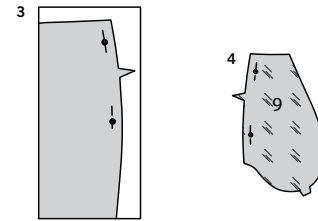
**HEM**

12. Turn up a 1-1/4" (3.2cm) hem on lower edge of top. Press under 1/4" (6mm) on raw edge. Stitch close to inner pressed edge.

PANTS C**BACK AND FRONT**

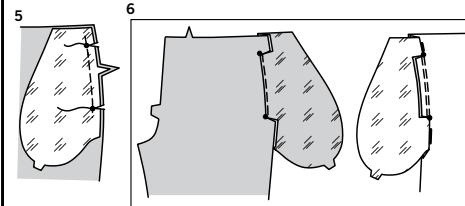
1. To make **DART** in Back (8), with right sides together, bring broken lines together, matching small dots. Stitch along broken line from wide end to point. Press dart toward center. Pin Front (7) to back at inner leg seams, matching notches and dots. Stitch seam, stretching back to fit between notch and dot.

2. With **RIGHT** sides together, pin center seam, matching inner leg seams and notches. Stitch. To reinforce seam, stitch again over first stitching.

**LEFT SIDE SEAM**

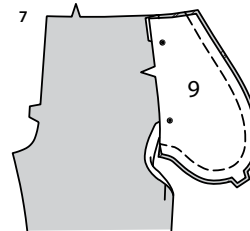
3. **REINFORCE** left side of front through large dots.

4. **REINFORCE** one Pocket (9) section (lining) through large dots.

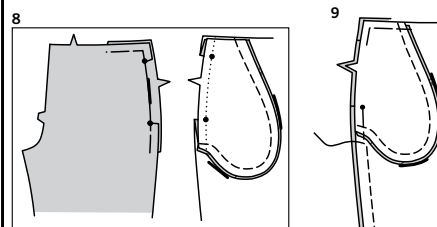


5. With right sides together, pin pocket lining to front at left side seam, matching notches and dots. Stitch between dots. Clip seam allowances to dots.

6. **UNDERSTITCH** pocket lining between dots. Press seams toward pocket lining, opening out clipped edges of left front.

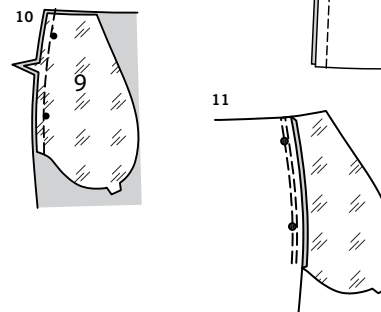


7. Pin one Pocket (9) section (**FABRIC**) to pocket lining, right sides together, matching notches and dots. Stitch pocket edges together to upper edge.



8. Turn pockets toward front along seamline, having side edges even above and below clips; press. Baste clipped front/lining edges to pocket at side seam and across upper edge.

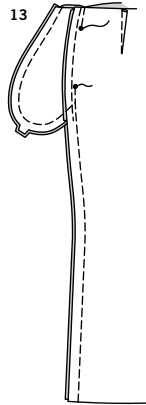
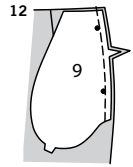
9. With right sides together, stitch left front to left back at left side seam, from lower edge to within 3" (7.5cm) of lower dot.

**RIGHT SIDE SEAM**

NOTE: Apply pockets to side edges of front and back as follows:

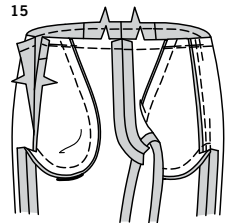
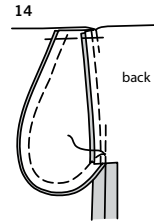
10. Stitch one **POCKET** (9) section (lining) to right front, matching large dots, having raw edges even. Stitch in 3/8" (1cm) seam.

11. **UNDERSTITCH** pocket lining. Press seam toward pocket lining, pressing pocket lining out.



12. Stitch one POCKET (9) section (fabric) to right back, matching large dots, having raw edges even. Stitch in 3/8" (1cm) seam. Press seam toward pocket, pressing pocket out.

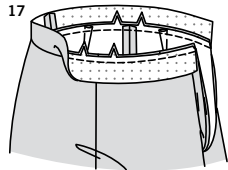
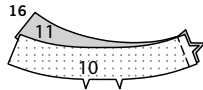
13. Stitch right front to right back at right side, leaving free between large dots. Stitch pocket edges together to upper edge.



14. Clip pants back seam allowance to stitching at lower end of pocket. Turn pockets toward front along seamline; press. Baste to upper edge.

WAISTBAND

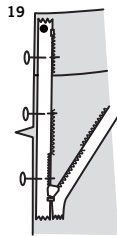
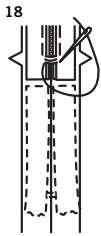
15. STAYSTITCH upper edge of pants.



16. Fuse INTERFACING to wrong side of one Front waistband (10) and Back waistband (11) section, following manufacturer's instructions. (Remaining waistband sections will be used as facing.) Pin front waistband to back waistband at right side seam.

17. With right sides together, pin waistband to upper edge of pants, matching centers and right side seams, clipping pants where necessary. Stitch; trim seam. Press toward waistband, turning waistband up.

ZIPPER



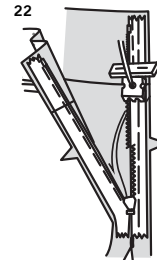
18. NOTE: It may be necessary to shorten zipper. To make new zipper stop, place zipper along opening edge (with pull tab 1/8" (3mm) below seamline). Mark placement of new zipper stop. Whipstitch across teeth at marking. Cut zipper 3/4" (2cm) below the new stop.

NOTE: Use special **INVISIBLE ZIPPER** foot when stitching invisible zipper.

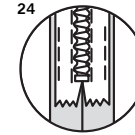
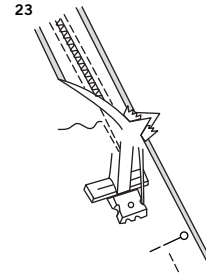
19. Open zipper. On outside, pin zipper to left back opening edge, face down in seam allowance, placing zipper teeth on seamline and top-stop at small dot.

20. With right groove of zipper foot over coil, stitch from upper edge to as close as possible to lower large dot, keeping pocket lining free. Backstitch to secure.

21. Close zipper. Pin the other half of the zipper to left side edge of front, right sides together, having coil along seamline and top-stop at small dot, keep front/pocket lining free. Make sure everything lines up. Re-pin if necessary.



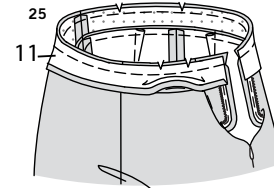
22. Open zipper. With left groove of zipper foot over coil, stitch from upper edge until foot touches slider, keeping pocket free. Backstitch to secure.



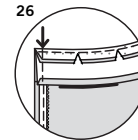
23. Close zipper. Pull the free ends of the zipper tape away from the seam allowance. Pin remaining seam together below zipper. Position zipper foot all the way to the left so the needle goes down through the outer notch of the foot. Start stitching seam 1/4" (6mm) above lowest stitch and slightly to the left, meeting previous seam stitching.

24. If you prefer, open out each seam allowance at end of zipper and stitch tape to seam allowance.

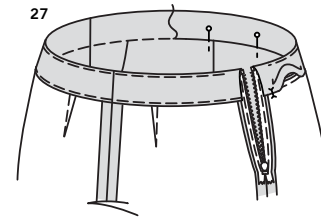
WAISTBAND FACING



25. Pin front waistband Facing (10) to back waistband Facing (11) at right side seam. Press under 1/2" (1.3cm) on notched edge of facing; trim to 1/4" (6mm). Open out left side opening edges of pants, rolling the zipper teeth away from the opening edge. With RIGHT sides together, pin waistband facing to pants, matching centers and right side seams. Stitch upper edge. Trim seam.



26. Pin left side opening edges together. Using an adjustable zipper foot, stitch 1/2" (1.3cm) from left edges, keeping zipper teeth free. Trim corners. Do not trim left side edges.



27. UNDERSTITCH by pressing facing and seam away from pants, stitching through facing and seam allowances close to seam as far as possible.

Turn facing and side edges to inside, rolling zipper teeth back in place; press.

On inside, pin pressed edge of facing just over seam, placing pins on outside.

On outside, stitch in the ditch or groove of seam, between zipper, catching in finished edge of facing on inside.

TIP: To conceal the stitches in the ditch or groove of seam, try using a zipper foot, spreading the pants and waistband away from the seam with your fingers.

HEMS

Hem on lower edge of pants in the same manner as described for TOP A, B; HEM.



Congrats!

You've completed your sewing adventure

**SHARE
YOUR** LOOK



Post your pattern and tag us
@simplicity_creative_group and **#simplicitypatterns**
for a chance to be featured on our social media.

Look for more PDF patterns at [simplicity.com](https://www.simplicity.com)

Have a question or need help with your sewing project call us at
1-888-588-2700



Simplicity ©2023 a division of IG Design Group Americas Inc. • Atlanta, GA 30342 USA www.thedesigngroup.com • All Rights Reserved. www.simplicity.com • Made in the U.S.A. Fabriqué aux États-Unis.

To be used for individual private home use only and not for commercial or manufacturing purposes. • A usage privé seulement et non à des fins commerciales ou de production en série. • Para uso privado solamente, no se puede utilizar con propósitos de comercialización o de producción en serie.