

S9862

Simplicity



Designed and printed in USA.

Average

Moins Facile

CHILDREN'S AND GIRLS' KNIT DRESSES

Suggested Fabrics: Stretch Knits only such as Bamboo, Double Knit, ITY, Ponte, Rib Knit, Stretch Velour, Sweater Knit. See Pick-A-Knit® Rule.

Notions: A,B,C: Zipper: 14" (36cm) for Children, 18" (46cm) for Girls. **Also for C:** Six ½" - ¾" (1.5cm - 2cm) buttons (optional).

Sizes	3	4	5	6	7	8	10	12	14
-------	---	---	---	---	---	---	----	----	----

BODY MEASUREMENTS: Select pattern size based on body measurements

Chest	22	23	24	25	26	27	28½	30	32	Ins.	
Waist	20½	21	21½	22	23	23½	24½	25½	26½	"	
Hip	—	24	25	26	27	28	30	32	34	"	
Back-neck to waist	9	9½	10	10½	11½	12	12¾	13½	14¼	"	
Approx. Height	38	41	44	47	50	52	56	58½	61	"	
Dress A	60**	1¼	1¼	1¼	1¼	1¼	1¾	1¾	2¼	2¼	Yds.
Dress B	60**	1¼	1¼	1¼	1¼	1¼	1¾	1¾	2¼	2¼	Yds.
Dress C	60**	1	1	1	1	1¼	1¼	1¼	1¼	1¼	Yds.

FINISHED GARMENT MEASUREMENTS (Includes Design and Wearing Ease)

A,B,C Chest	22	23	24	25	26½	27½	29	30½	32½	Ins.
A,B,C Waist	21	22	23	24	23¾	24¾	26	27¾	29¾	"
C Hip	26	27	28	29	28¾	29¾	31½	33½	35½	"
Width, lower edge										
Dress A,B	68½	69½	70½	71½	83¾	84¾	86	87¾	89½	Ins.
Dress C	33	34	35	36	37	38	40	42	44	"
Finished back length from base of neck										
Dress A,B,C	20¼	21½	22¼	24	26¼	27¼	29¼	31¼	32¼	Ins.

*with nap **without nap

ROBES EN TRICOT POUR ENFANTS ET FILLETES

Tissus Conseillés: Seulement pour tricotés extensibles tels que Bambou, Tricot double, ITY (tricotés interlock en fil retors), Ponte, Tricot à côtes, Velours extensible, Tricotés pour chandail. Reportez-vous à la règle Pick-A-Knit®.

Mercerie: A, B, C : fermeture à glissière : 36cm pour enfants, 46cm pour fillettes.

Aussi pour C : 6 boutons de 1.5cm - 2cm (opt.).

Tailles	3	4	5	6	7	8	10	12	14
---------	---	---	---	---	---	---	----	----	----

MESURES DU CORPS: Choisissez la taille du patron basée sur les mesures du corps

Poitrine	56	58	61	64	66	69	73	76	81	cm	
Taille	52	53	55	56	58	60	62	65	67	"	
Hanches	—	61	64	66	69	71	76	81	87	"	
Dos du cou à la taille	23	24	25.5	27	29.5	31	32.5	34.5	36	"	
Taille approx.	97	104	112	119	127	132	142	149	155	"	
Robe A	150cm*	1.1	1.1	1.1	1.3	1.5	1.6	1.7	1.8	1.9	m
Robe B	150cm*	1.0	1.0	1.1	1.1	1.5	1.5	1.6	1.7	1.8	m
Robe C	150cm*	0.8	0.9	0.9	0.9	1.1	1.1	1.3	1.4	1.5	m

MESURES DES VÊTEMENTS FINI (Motif et aisance de port compris)

A,B,C Poitrine	56	58	61	64	67	70	74	77	83	cm
A,B,C Taille	53	56	58	61	60	62	66	70	75	"
C Hanches	66	69	71	74	72	75	80	85	90	"
Largeur à l'ourlet										
Robe A,B	174	177	179	182	212	215	218	222	227	cm
Robe C	84	86	89	91	94	97	102	107	112	"
Longueur finie – dos, votre nuque à l'ourlet										
Robe A,B,C	51	55	58	61	68	69	74	80	84	cm

*avec sens **sans sens



A B



C

Use the 1 inch (2.54cm) box to ensure you are using rule at 100%

Utilisez la boîte de 2.54 cm pour vous assurer d'utiliser la règle à 100%.

Utilizar un cuadrado de 2.54 cm para asegurarse de estar usando la regla al 100%.

PICK-A-KNIT® RULE

FOR THIS PATTERN - 4" (10 cm) OF KNIT FABRIC MUST STRETCH CROSSWISE FROM HERE
POUR CE PATRON - LE JERSEY DOIT S'ETIRER DANS LA LARGEUR DE 4" (10 cm) DEPUIS ICI
PARA ESTE PATRON - LAS MALLAS DEBEN ESTIRARSE A LO ANCHO POR 4" (10 cm) DESDE AQUI



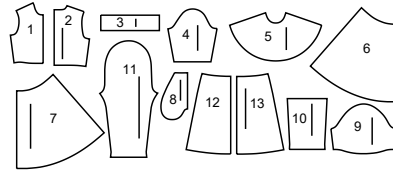
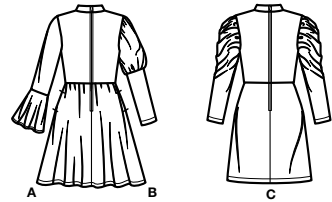
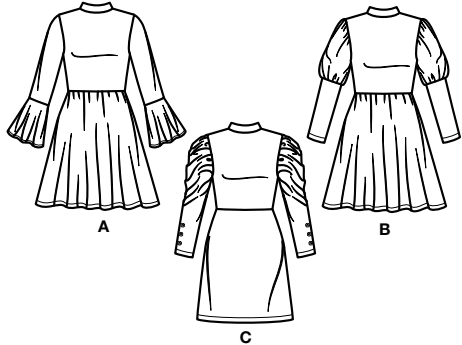
TO HERE 50%
JUSQUE LA 50%
HASTA ALLA 50%



When using the Pick-A-Knit® rule to measure your fabrics stretch capacity, rule must be viewed or printed at 100%.
Quand vous utilisez la règle Pick-A-Knit® pour mesurer la capacité d'élasticité des tissus, la règle doit être visible ou imprimée à 100%.
Al utilizar la regla Pick-A-Knit® para medir la capacidad de elasticidad de las telas, la regla debe estar visible o impresa al 100%.

Simplicity®

Thank you for purchasing this Simplicity pattern.
We made every effort to provide you with a high quality product.



- 1 Bodice Front-A,B,C
- 2 Bodice Back-A,B,C
- 3 Neckband-A,B,C
- 4 Sleeve-A
- 5 Sleeve Flounce-A
- 6 Skirt Front-A,B
- 7 Skirt Back-A,B
- 8 Pocket-A,B
- 9 Upper Sleeve-B
- 10 Lower Sleeve-B
- 11 Sleeve-C
- 12 Skirt Front-C
- 13 Skirt Back-C

General Directions

The Pattern

- SYMBOLS**
- GRAIN LINE Place on straight grain of fabric parallel to selvage
 - PLACE SOLID LINE on fold of fabric.
 - CENTER FRONT OR BACK OF garment.
 - NOTCHES
 - DOTS
 - CUTTING LINE
 - LENGTHEN OR SHORTEN LINES

SEAM ALLOWANCE: 5/8" (1.5cm) unless otherwise stated is included but not printed on MULTI-SIZE PATTERNS. Mark your size with colored felt tip pen. See chart on tissue for how to use MULTI-SIZE PATTERNS.

ADJUST IF NEEDED
Make adjustments before placing pattern on fabric.

TO LENGTHEN:
Cut pattern between lengthen or shorten lines. Spread pattern evenly, the amount needed and tape to paper.

TO SHORTEN:
At lengthen or shorten lines, make an even pleat taking up amount needed. Tape in place.

When lengthen or shorten lines are not given, make adjustments at lower edge of pattern.

Cutting/Marking

BEFORE CUTTING:
PRESS pattern pieces with a warm dry iron. PRE-SHRINK fabric by pre-washing washables or steam-pressing non-washables.

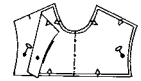
CIRCLE your cutting layout.
PIN pattern to fabric as shown in Cutting Layouts.

- FOR DOUBLE THICKNESS: Fold fabric with RIGHT sides together.
- FOR SINGLE THICKNESS: Place fabric RIGHT side up.
- FOR PILE, SHADED OR ONE WAY DESIGN FABRICS: Use "with nap" layouts

AFTER CUTTING:
Transfer markings to WRONG side of fabric before removing pattern. Use pin and chalk method or dressmaker's tracing paper and wheel.

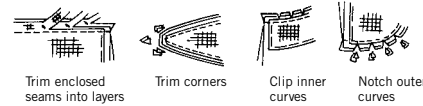
To Quick Mark:

- Snip edge of fabric to mark notches, ends of fold lines and center lines.
- Pin mark dots.



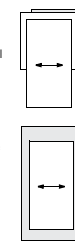
Sewing

- SEW garment following Sewing Directions.
- PIN or machine-baste seams matching notches.
- STITCH 5/8" (1.5 cm) seams unless otherwise stated.
- PRESS seams open unless otherwise indicated clipping when necessary so seams will lie flat.
- TRIM seams to reduce bulk, as shown below.



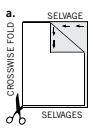
SPECIAL CUTTING NOTES

★ If layout shows a piece extending past fold, cut out all pieces except piece that extends.

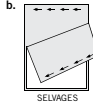


Open out fabric to single thickness. Cut extending piece on RIGHT side of fabric in position shown.

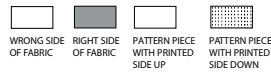
✱ Mark small arrows along both selvages indicating direction of nap or design. Fold fabric crosswise with RIGHT sides together, and cut along fold (a).



Turn one fabric layer around so arrows on both layers go in the same direction. Place RIGHT sides together (b).



Cutting Layouts



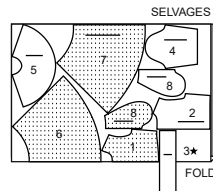
POSITION OF PATTERN PIECES MAY VARY SLIGHTLY ACCORDING TO YOUR PATTERN SIZE

CHILDREN'S SIZES

DRESS A

USE PIECES 1 2 3 4 5 6 7 8

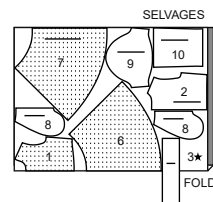
60" (150CM)
WITH NAP
SIZES 3 4 5 6



DRESS B

USE PIECES 1 2 3 6 7 8 9 10

60" (150CM)
WITH NAP
SIZES 3 4 5 6

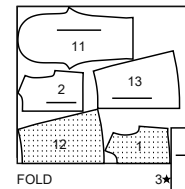


DRESS C

USE PIECES 1 2 3 11 12 13

60" (150CM)
WITH NAP
SIZES 3 4 5 6

SELVAGES

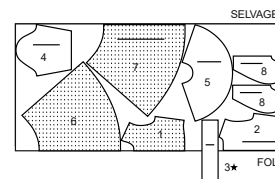


GIRLS' SIZES

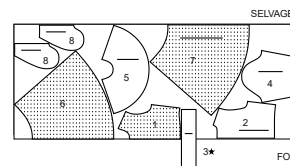
DRESS A

USE PIECES 1 2 3 4 5 6 7 8

60" (150CM)
WITH NAP
SIZES 7 8 10



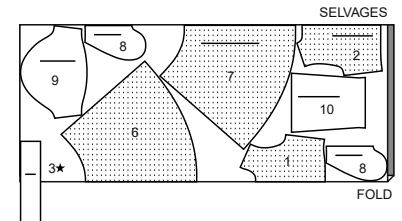
60" (150CM)
WITH NAP
SIZES 12 14



DRESS B

USE PIECES 1 2 3 6 7 8 9 10

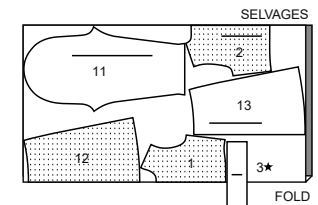
60" (150CM)
WITH NAP
SIZES 7 8 10 12 14



DRESS C

USE PIECES 1 2 3 11 12 13

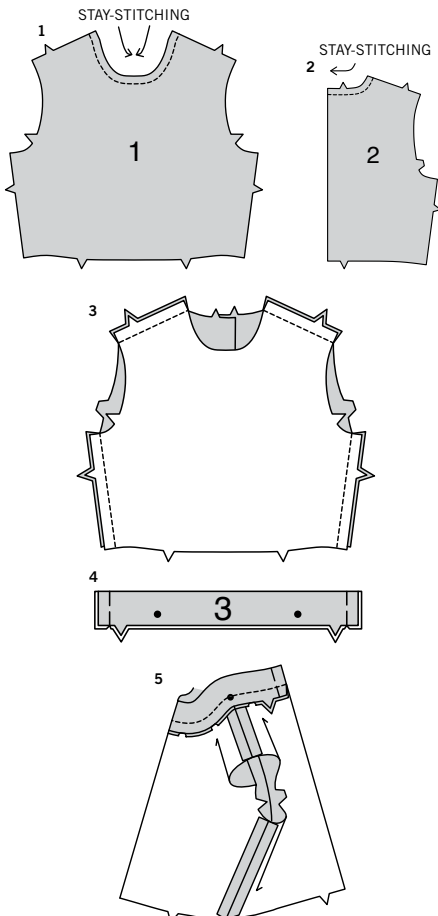
60" (150CM)
WITH NAP
SIZES 7 8 10 12 14



SEWING TUTORIALS



Build your skills viewing short, easy-to-follow videos at simplicity.com/sewingtutorials



Sewing Directions

FABRIC KEY RIGHT SIDE WRONG SIDE INTERFACING LINING LINING

Sewing methods in **BOLD TYPE** have Sewing Tutorial Video available. Scan QR CODE to watch videos:

EASE/GATHER - see Gathering: "sewing two row gathers" video

NARROW HEM - see Hems: "sewing narrow hems" video

EDGE STITCH - see Machine Stitches: "how to edgestitch" video

STAYSTITCH - see Machine Stitches: "how to do stay-stitching" video

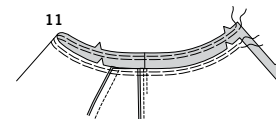
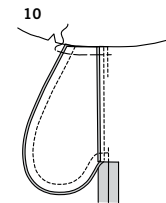
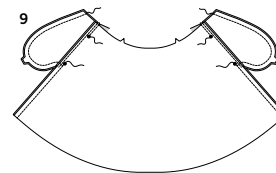
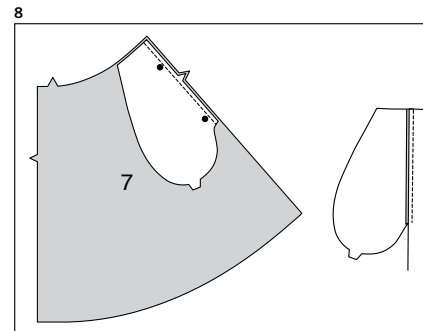
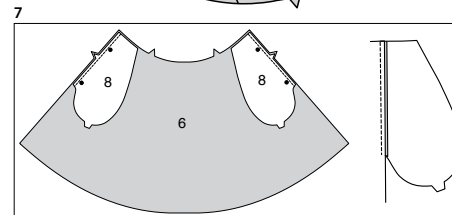
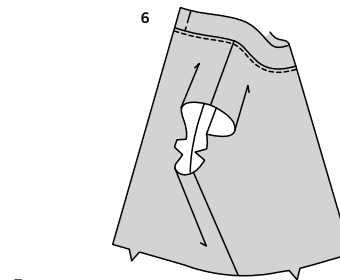
DOUBLE-STITCH - see Machine Stitches: "how to double-stitch" video

DRESS A, B, C

NOTE: For knit fabrics stay-stitching is optional.

BODICE

- STAYSTITCH** neck edge of bodice front (1) 1/2" (1.3cm) from cut edge.
- STAYSTITCH** neck edge of bodice back (2) 1/2" (1.3cm) from cut edge.
- Stitch bodice back sections to bodice front at shoulders and sides.
- With **WRONG** sides together, fold neck band (3) along foldline, matching notches and small dots. Pin lower raw edges together. Baste center back edges.
- On **OUTSIDE**, pin band to neck edge, matching centers and notches, having raw edges even, placing small dots at shoulder seams. Clip to stay-stitching if necessary. Stitch, stretching band to fit. Press seam toward top, pressing band out.



- EDGE STITCH** neck edge.

SKIRT AND ZIPPER

FOR VIEWS A, B-

- With **RIGHT** sides together, pin one pocket (8) section to side edges of skirt front (6), matching large dots, having raw edges even. Stitch in 3/8" (1cm) seam. Press seam toward pocket, pressing pocket out.

- Stitch one remaining pocket to side edge of each skirt back (7) section, in same manner as for front.

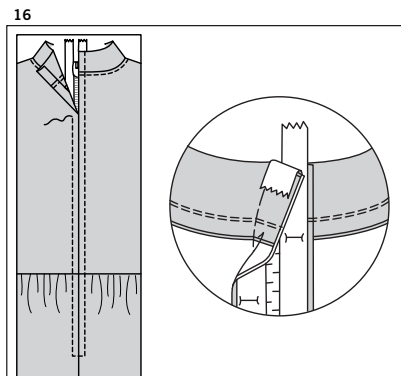
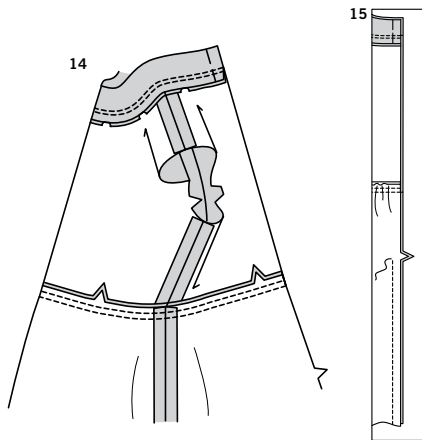
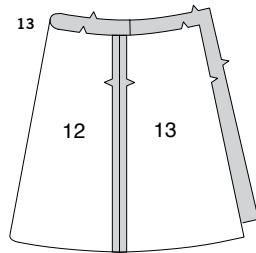
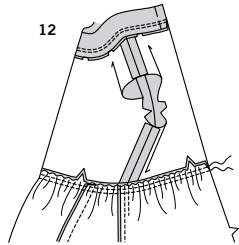
- With **RIGHT** sides together, pin front to back at side seams, matching large dots. Stitch side seams, leaving an opening between large dots. Stitch pocket edges together to side seam.

- Clip back seam allowances below pockets. Press seam open below clips. Press pocket toward front. Baste upper edges.

- GATHER** upper edge of skirt.

S9862

3 of 4



12. With **RIGHT** sides together, pin skirt to bodice, matching centers, seams and notches. Pull up gathering stitches and adjust gathers evenly. Baste. Stitch in a **DOUBLE-STITCHED** seam. Press seam toward bodice.

FOR VIEW C-

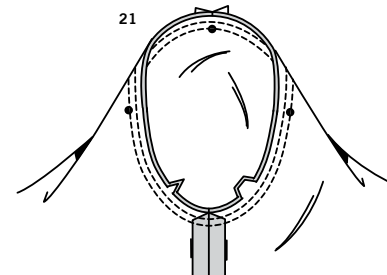
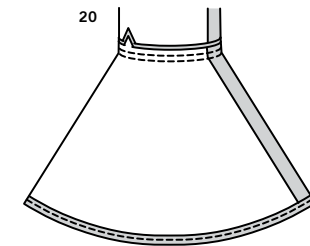
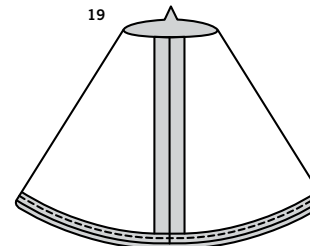
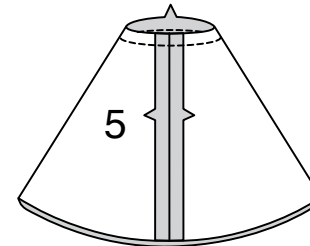
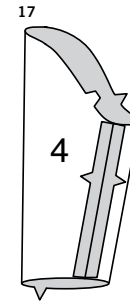
13. Stitch skirt back (13) sections to skirt front (12) at sides.

14. With **RIGHT** sides together, pin skirt to bodice, matching centers, seams and notches. Baste. Stitch in a **DOUBLE-STITCHED** seam. Press seam toward bodice.

FOR ALL VIEWS-

15. Stitch center back seam below notch, back-stitching at notch to reinforce seam.

16. Press under 5/8" (1.5cm) on back opening edges. Pin closed zipper under opening edges with tab end 1/4" (6mm) below upper edge, having edges meet at center of zipper. Turn upper ends of zipper tape over seam allowances. Hand baste in place. Using an adjustable zipper foot, stitch 1/4" (6mm) from center and across end, as shown.



SLEEVE AND FINISHING

FOR VIEW A-

17. Stitch sleeve (4) seam.

18. With **RIGHT** sides together, stitch sleeve flounce (5) seam. **STAYSTITCH** upper edge of sleeve flounce.

19. Make **NARROW HEM** at lower edge of sleeve flounce.

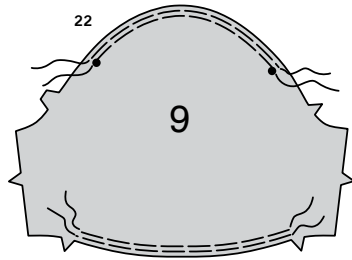
20. With **RIGHT** sides together, pin flounce to sleeve, matching seams and notches, clipping to stay-stitching if necessary. Baste. Stitch in a **DOUBLE-STITCHED** seam. Press seam toward sleeve.

21. With **RIGHT** sides together, pin sleeve to dress at armhole edge, placing center small dot at shoulder seam, matching remaining small dots. Stitch. Stitch again 1/4" away in seam allowances. Trim close to second stitching. Press seam toward sleeve.

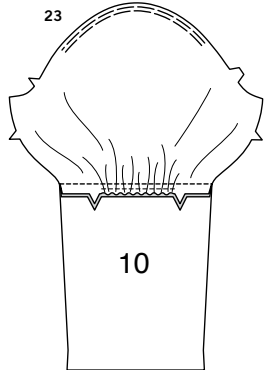
S9862

4 of 4

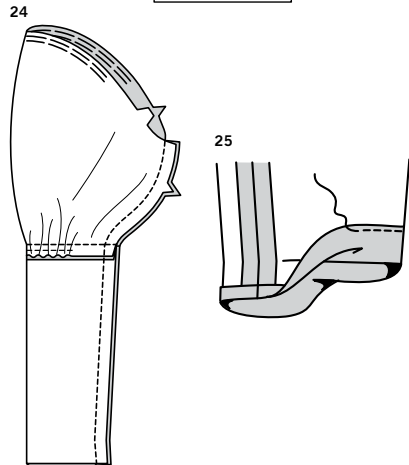
FOR VIEW B-



22. GATHER upper edge of upper sleeve (9) between outer small dots.
GATHER lower edge of upper sleeve between notches.

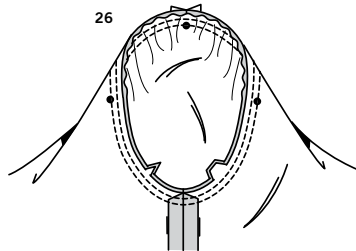


23. With RIGHT sides together, pin lower sleeve (10) to upper sleeve, matching notches. Pull up gathering stitches and adjust gathers evenly. Stitch. Press seam toward lower sleeve.

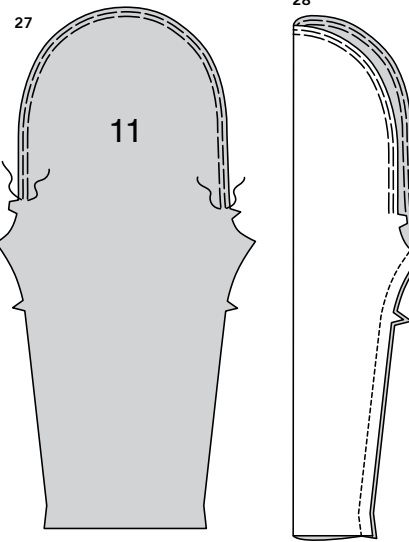


24. Stitch sleeve seam.

25. Turn up 1 1/4" (3.2cm) hem on lower edge of sleeve. Turn 1/4" (6mm) on raw edge of hem to wrong side; press. Stitch close to inner edge of hem.



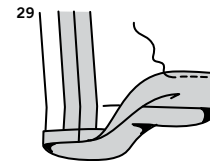
26. With RIGHT sides together, pin sleeve to dress at armhole edge, placing center small dot at shoulder seam, matching remaining small dots. Pull up gathering stitches and adjust gathers evenly. Stitch. Stitch again 1/4" away in seam allowances. Trim close to second stitching. Press seam toward sleeve.



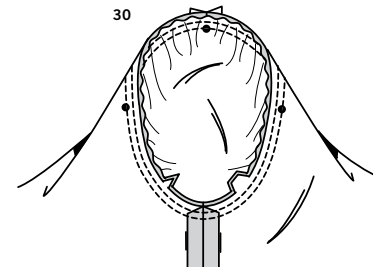
FOR VIEW C-

27. GATHER upper edge of sleeve (11) between notches, as shown.

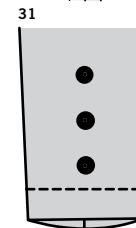
28. Stitch sleeve seam.



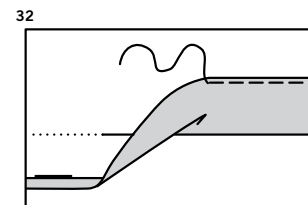
29. Turn up 1 1/4" (3.2cm) hem on lower edge of sleeve. Turn 1/4" (6mm) on raw edge of hem to wrong side; press. Stitch close to inner edge of hem.



30. With RIGHT sides together, pin sleeve to dress at armhole edge, placing center small dot at shoulder seam, matching remaining small dots. Pull up gathering stitches and adjust gathers evenly. Stitch. Stitch again 1/4" away in seam allowances. Trim close to second stitching. Press seam toward sleeve.



31. OPTIONAL: Sew buttons to sleeves at small dots.



FOR ALL VIEWS-

32. Turn up 1 1/4" (3.2cm) hem on lower edge of dress. Turn 1/4" (6mm) on raw edge of hem to wrong side; press. Stitch close to inner edge of hem.



Congrats!

You've completed your sewing adventure

**SHARE
YOUR** LOOK



Post your pattern and tag us
@simplicity_creative_group and **#simplicitypatterns**
for a chance to be featured on our social media.

Look for more PDF patterns at [simplicity.com](https://www.simplicity.com)

Have a question or need help with your sewing project call us at
1-888-588-2700



Simplicity ©2023 a division of IG Design Group Americas Inc. • Atlanta, GA 30342 USA www.thedesigngroup.com • All Rights Reserved. www.simplicity.com • Made in the U.S.A. Fabriqué aux États-Unis.

To be used for individual private home use only and not for commercial or manufacturing purposes. • A usage privé seulement et non à des fins commerciales ou de production en série. • Para uso privado solamente, no se puede utilizar con propósitos de comercialización o de producción en serie.