

S9860

Simplicity



Designed and printed in USA.



Average

CHILDREN'S, TEEN'S AND ADULTS' VESTS

Suggested Fabrics: Corduroy, Denim, Faux Leather/Suede, Flannel, Fleece, Sherpa, Twill. **Contrast A:** Fleece, Low-Pile Fake Fur, Sherpa. **Interfacing:** Lightweight Fusible.

Notions: A,B: Separating jacket zipper: 16" (41cm) for Children/Teens, 22" (56cm-adjust to fit) for Teens/Adults. **Also for B:** 7" (18cm) zipper (adjust to fit - for upper pocket).

Sizes	CHILDREN'S/ TEENS'			
	XS 5-6	S 7-8	M 10-12	L 14-16

BODY MEASUREMENTS: Select pattern size based on body measurements					
Chest/ Bust	24-25	26-27	28½-30	32-34	Ins.
Waist	21½-22	23-23½	24½-25½	26½-27½	"
Hip	25-26	27-28	30-32	34-36	"
Back-neck to waist	10-10½	11½-12	12¾-13½	14¾-15	"

Interfacing A,B 20" - ¾ yd.					
Vest A	60** ¾	¾	¾	¾	Yd.
Contrast (Under Pocket, Front and Back Lining)					
	60** ¾	¾	¾	¾	Yd.
Vest B	60** ¾	¾	¾	¾	Yd.
Contrast (Front and Back Lining)					
	60** ¾	¾	¾	¾	Yd.

Sizes	TEENS'/ ADULTS'				
	XS	S	M	L	XL
European	30-32	34-36	38-40	42-44	46-48
	40-42	44-46	48-50	52-54	56-58

BODY MEASUREMENTS: Select pattern size based on body measurements						
Chest/ Bust	30-32	34-36	38-40	42-44	46-48	Ins.
Waist	24-26	28-30	32-34	36-39	42-44	"
Hip	31-33	35-37	39-41	43-45	47-49	"
Back-neck to waist	17¼-17½	17¾-18	18¼-18½	18¾-19	19¼-19½	"

Interfacing A,B 20" - ¾ yd.					
Vest A	60** 1¾	1¾	1¾	1¾	Yds.
Contrast (Under Pocket, Front and Back Lining)					
	60** 1	1	1	1¼	Yds.
Vest B	60** 1¾	1¾	1¾	1½	Yds.
Contrast (Front and Back Lining)					
	60** 1	1	1	1¼	Yds.

NOTE: Please refer to the sewing instructions for FINISHED GARMENT MEASUREMENTS.

*with nap **without nap

Moins Facile

GILETS POUR ENFANTS, ADOLESCENTS ET ADULTES

Tissus Conseillés: Velours côtelé, Denim, Simili cuir/suédine, Flanelle, Molleton, Sherpa, Twill. **Contraste A:** Molleton, Fourrure synthétique à poil ras, Sherpa. **Entoilage:** thermocollant léger.

Mercurerie: A, B : fermeture à glissière séparable pour veste : 41cm pour enfants/adolescents, 56cm (à ajuster) pour adolescents/adultes. **Aussi pour B :** fermeture à glissière de 18cm (à ajuster - pour la poche supérieure).

Tailles	ENFANTS/ ADOLESCENTS			
	TP/XS 5-6	P/S 7-8	M 10-12	G/L 14-16

MESURES DU CORPS: Choisissez la taille du patron basée sur les mesures du corps					
Poitrine	61-64	66-69	71-76	81-86	cm
Taille	52-54	59-60	64-66	67-70	"
Hanches	59-61	69-71	76-79	88-93	"
Dos du cou à la taille	26-27	29-31	32-33	36-41	"

Entoilage A,B 51cm - 0.6m					
Gilet A	150cm* 0.7	0.7	0.8	0.8	m
Contraste (Dessous de poche, Doublure devant et dos)					
	150cm* 0.7	0.7	0.7	0.8	m
Gilet B	150cm* 0.7	0.7	0.8	0.8	m
Contraste (Doublure devant et dos)					
	150cm* 0.7	0.7	0.7	0.8	m

Tailles	ADOLESCENTS/ ADULTES				
	TP/XS	P/S	M	G/L	TG/XL
30-32	34-36	38-40	42-44	46-48	
Françaises/ Eur	40-42	44-46	48-50	52-54	56-58

MESURES DU CORPS: Choisissez la taille du patron basée sur les mesures du corps						
Poitrine	76-81	87-92	97-102	107-112	117-122	cm
Taille	61-66	71-76	82-87	92-99	107-112	"
Hanches	79-84	89-94	99-104	109-115	120-125	"
Dos du cou à la taille	44	45-46	47-48	48-49	49-50	"

Entoilage A,B 51cm - 0.8m						
Gilet A	150cm* 1.1	1.3	1.3	1.3	1.3	m
Contraste (Dessous de poche, Doublure devant et dos)						
	150cm* 0.9	1.0	1.0	1.1	1.1	m
Gilet B	150cm* 1.3	1.3	1.3	1.3	1.4	m
Contraste (Doublure devant et dos)						
	150cm* 0.9	0.9	0.9	0.9	1.0	m

NOTE: S'il vous plaît, reportez-vous aux instructions de couture pour les MESURES DU VÊTEMENTS FINI.

*avec sens **sans sens



A



A



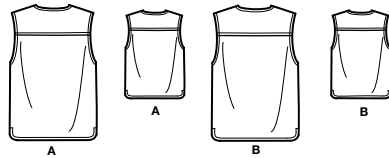
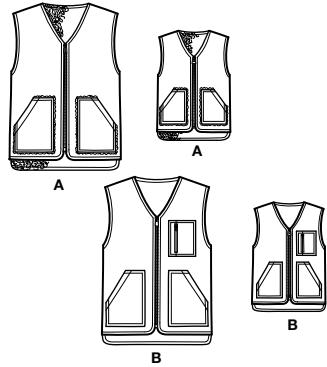
B



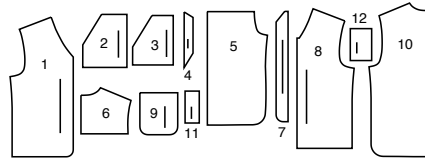
B

Simplicity

Thank you for purchasing this Simplicity pattern. We made every effort to provide you with a high quality product.



12 PIECES



- 1 Front-A,B
- 2 Pocket-A,B
- 3 Under Pocket-A
- 4 Pocket Facing-A,B
- 5 Back-A,B
- 6 Yoke Back-A,B
- 7 Front Facing-A,B
- 8 Front Lining-A,B
- 9 Inside Pocket-A,B
- 10 Back Lining-A,B
- 11 Upper Pocket (Front)-B
- 12 Upper Pocket (Side)-B

Sizes	CHILDREN'S/TEENS'				
	XS 5-6	S 7-8	M 10-12	L 14-16	
FINISHED GARMENT MEASUREMENTS (Includes Design and Wearing Ease)					
A,B Bust/Chest	29	30½	33	36½	
A,B Waist	29	30½	33	36½	
Finished back length from base of neck				*	
Vest A,B	18¼	18¼	20	21¼	
				Ins.	
Sizes	TEENS'/ADULTS'				
	XS 30-32	S 34-36	M 38-40	L 42-44	XL 46-48
FINISHED GARMENT MEASUREMENTS (Includes Design and Wearing Ease)					
A,B Bust/Chest	42	44	48	52	56
A,B Waist	40½	42½	46½	50½	54½
Finished back length from base of neck					*
Vest A,B	28½	29	29½	30	30½
					Ins.

General Directions

The Pattern

- SYMBOLS**
- GRAIN LINE Place on straight grain of fabric parallel to selvage
 - PLACE SOLID LINE on fold of fabric.
 - CENTER FRONT OR BACK of garment.
 - NOTCHES
 - DOTS
 - CUTTING LINE
 - LENGTHEN OR SHORTEN LINES

SEAM ALLOWANCE: 5/8" (1.5cm) unless otherwise stated is included but not printed on MULTI-SIZE PATTERNS. Mark your size with colored felt tip pen. See chart on tissue for how to use MULTI-SIZE PATTERNS.

ADJUST IF NEEDED
Make adjustments before placing pattern on fabric.

TO LENGTHEN:
Cut pattern between lengthen or shorten lines. Spread pattern evenly, the amount needed and tape to paper.

TO SHORTEN:
At lengthen or shorten lines, make an even pleat taking up amount needed. Tape in place.

When lengthen or shorten lines are not given, make adjustments at lower edge of pattern.

Cutting/Marking

BEFORE CUTTING:
PRESS pattern pieces with a warm dry iron. PRE-SHRINK fabric by pre-washing washables or steam-pressing non-washables.

CIRCLE your cutting layout.

PIN pattern to fabric as shown in Cutting Layouts.

• FOR DOUBLE THICKNESS: Fold fabric with RIGHT sides together.

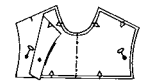
• FOR SINGLE THICKNESS: Place fabric RIGHT side up.

• FOR PILE, SHADED OR ONE WAY DESIGN FABRICS: Use "with nap" layouts

AFTER CUTTING:
Transfer markings to WRONG side of fabric before removing pattern. Use pin and chalk method or dressmaker's tracing paper and wheel.

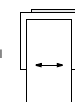
To Quick Mark:

- Snip edge of fabric to mark notches, ends of fold lines and center lines.
- Pin mark dots.

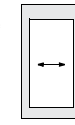


SPECIAL CUTTING NOTES

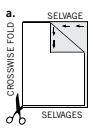
★ If layout shows a piece extending past fold, cut out all pieces except piece that extends.



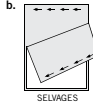
Open out fabric to single thickness. Cut extending piece on RIGHT side of fabric in position shown.



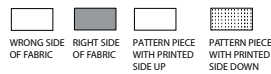
✱ Mark small arrows along both selvages indicating direction of nap or design. Fold fabric crosswise with RIGHT sides together, and cut along fold (a).



Turn one fabric layer around so arrows on both layers go in the same direction. Place RIGHT sides together (b).



Cutting Layouts



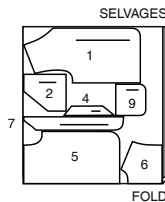
POSITION OF PATTERN PIECES MAY VARY SLIGHTLY ACCORDING TO YOUR PATTERN SIZE

CHILDREN'S

VEST A (VEST AND INSIDE POCKET)

PIECES 1 2 4 5 6 7 9

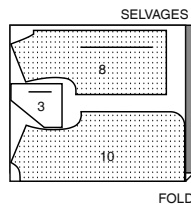
60" (150CM)
WITH NAP
SIZES XS S M L



CONTRAST A (LINING AND FRONT UNDER POCKET)

PIECES 3 8 10

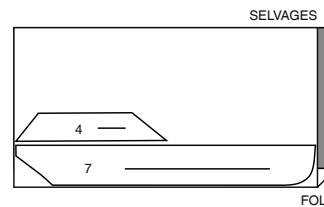
60" (150CM)
WITH NAP
SIZES XS S M L



INTERFACING A,B

PIECES 4 7

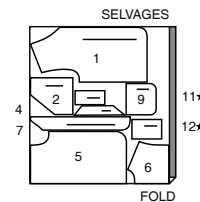
20" (51CM)
SIZES XS S M L



VEST B

PIECES 1 2 4 5 6 7 9 11 12

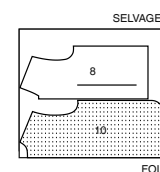
60" (150CM)
WITH NAP
SIZES XS S M L



CONTRAST B (LINING)

PIECES 8 10

60" (150CM)
WITH NAP
SIZES XS S M L

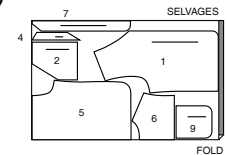


TEENS' AND ADULTS'

VEST A (VEST AND INSIDE POCKET)

PIECES 1 2 4 5 6 7 9

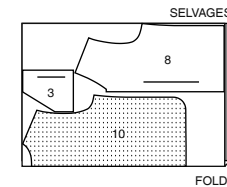
60" (150CM)
WITH NAP
SIZES XS S M L XL



CONTRAST A (LINING AND FRONT UNDER POCKET)

PIECES 3 8 10

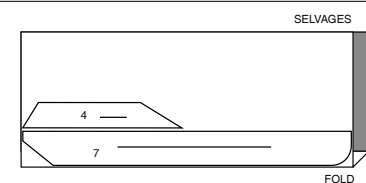
60" (150CM)
WITH NAP
SIZES XS S M L XL



INTERFACING A,B

PIECES 4 7

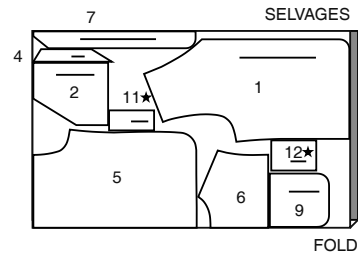
20" (51CM)
SIZES XS S M L XL



CUTTING LAYOUTS CONTINUED ON PAGE 2

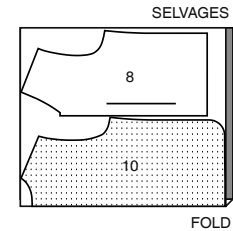
VEST B

PIECES 1 2 4 5 6 7 9 11 12

60" (150CM)
WITH NAP
SIZES XS S M L XL

CONTRAST B (LINING)

PIECES 8 10

60" (150CM)
WITH NAP
SIZES XS S M L XL

Sewing Directions

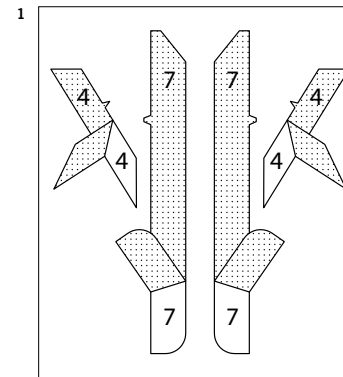
FABRIC
KEYRead **General Directions** on page 1 before you begin.Sewing methods in **BOLD TYPE** have Sewing Tutorial Video available. Scan QR CODE to watch videos:**EDGE STITCH** – see **Machine Stitches: "how to sew an edgestitch"** video.**SLIPSTITCH** – see **Hand Stitching: "how to slip stitch"** video.**STAYSTITCH** – see **Machine Stitches: "how to do stay stitching"** video.**TOPSTITCH** – see **Machine Stitches: "how to topstitch"** video.**TRIM SEAM** – see **Seams: "how to trim, clip and layer seams"** video.**UNDERSTITCH** – see **Machine Stitches: "how to understitch"** video.**PATTERN PIECES WILL BE IDENTIFIED BY NUMBERS THE FIRST TIME THEY ARE USED.****STITCH 5/8" (1.5CM) SEAMS WITH RIGHT SIDES TOGETHER UNLESS OTHERWISE STATED.**

SIMPLY THE BEST SEWING TECHNIQUES FOR SYNTHETIC SUEDE OR LEATHER-LIKE FABRICS

- Pin or baste seams within the seam allowance since pin holes remain in fabric.
- Basting tape, binder or seam clips are other ideal methods to hold seam allowances together and avoid slipping of fabric.
- For hand-basting or sewing, use a leather needle and thimble.
- For machine-sewing, use medium but balanced tension and 10 to 12 stitches per inch (2.5cm)...size 11/12 leather needle and 100% polyester or polyester core thread.
- For top-stitching, use a size 14 or 16 needle and silk, polyester buttonhole twist or top-stitching thread.
- When feeding fabric through machine, hold it "taut" in front of and behind the machine needle as you sew. **DO NOT** stretch.

- Press seams open with fingers or press on **WRONG** side with iron set at a low temperature setting and a press cloth. **DO NOT USE A STEAM IRON. WE DO NOT RECOMMEND PRESSING ON RIGHT SIDE OF FABRIC.** When pressing synthetic leather or vinyl, we recommend covering your ironing board and garment with brown paper to prevent melting.
- Another method for holding seams or hems down is use rubber cement and flatten with a mallet or roller.
- Always test on fashion fabric scraps.
- Some fabrics may be stubborn to feed through your sewing machine. Place strips of tissue paper or tear away stabilizer over seams and edges of garment to be stitched. Tear away paper after stitching. This method will give you even stitches without any puckers. Or, use a non-stick pressure foot or roller foot or walking foot.
- Since cut edges do not ravel, inner edges of seams, facings, and hems can be left raw.
- Stitch hems 1/4" (6mm) from raw edge.

SEWING TUTORIALS

Build your skills viewing short, easy-to-follow videos at simplicity.com/sewingtutorials

VEST A, B

INTERFACING

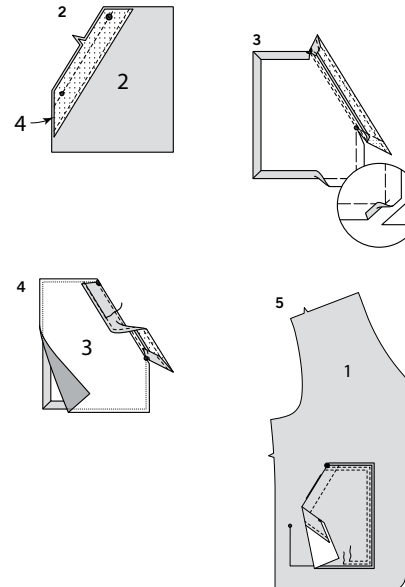
1. Pin interfacing to wrong side of **POCKET FACING (4)** and **FRONT FACING (7)**. Fuse in place following manufacturer's directions.

FRONT AND BACK

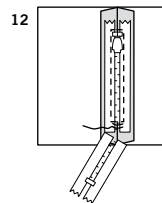
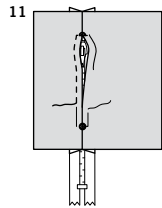
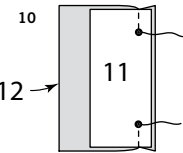
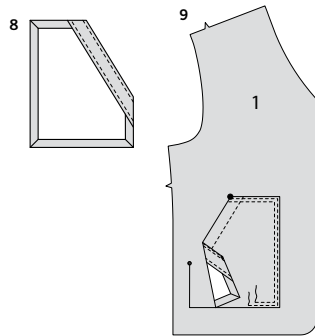
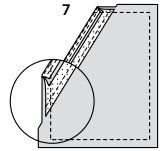
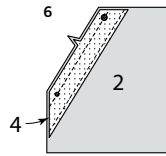
NOTE: If working with a woven fabric or lining, begin by **STAYSTITCH(ING)** the neck edges of **FRONT (1)** and **YOKE BACK (6)**.

FRONT POCKET A

2. Finish unmarked edge of **POCKET FACING (4)** by stitching 1/4" (6mm) from raw edge and finishing with pinking, overcasting, overlock, or by turning in along stitching and stitching close to fold. With right sides together and raw edges even, pin pocket facing to **POCKET (2)**, matching small dots, large dots, and notches. Stitch notched edge. **TRIM SEAM.**
3. **UNDERSTITCH** the facing. Baste seam allowance just outside seamline on edges of pocket and facing. To eliminate bulk, trim corners on raw edges diagonally to 1/4" (6mm) and turn edge under; clip to dots. Turn under raw edges along seamline. Press.
4. On inside, place the right side of **UNDER POCKET (3)** to wrong side of pocket, matching small and large dots. (Under pocket extends beyond unmarked edges of pocket). Fold facing to inside (over wrong side of under pocket). Press. Stitch facing 1" (2.5cm) from pressed edge.
5. On outside, pin pocket to **FRONT (1)** along pocket line, matching small and large dots. **EDGE STITCH** and **TOPSTITCH** along pocket line.



FRONT POCKETS B



6. Finish unmarked edge of POCKET FACING (4) by stitching 1/4" (6mm) from raw edge and finishing with pinking, overcasting, overlock, or by turning in along stitching and stitching close to fold. With right sides together and raw edges even, pin pocket facing to POCKET (2), matching small dots, large dots, and notches. Stitch notched edge. **TRIM SEAM. UNDERSTITCH** the facing.

7. With right sides together, pin pocket facing to pocket at side and upper edge. Stitch along seamline and raw edges. Trim seam allowance in the facing area to 1/4" (6mm).

8. Turn corners right side out, turning facing to the wrong side; press, pressing under raw edges along stitching, folding out fullness at corners. Stitch facing 1" (2.5cm) from pressed edge.

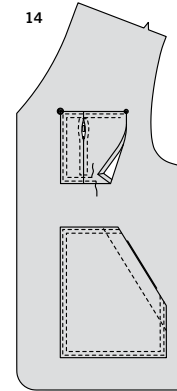
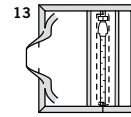
9. On outside, pin pocket to FRONT (1) along pocket line, matching small and large dots. **EDGESTITCH** and **TOPSTITCH** along pocket line.

NOTE: Upper pocket zipper will be shortened after it is placed.

10. With right sides together, pin UPPER POCKET (11) and UPPER POCKET (12) at inner edge, matching small dots. Stitch inner edge, leaving an opening between small dots. Press seam open.

11. Pin closed zipper under opening edges of pocket with top stop just below upper small dot, having edges meet at center of zipper. Baste. Stitch 1/4" (6mm) each side of center and across ends at small dots, using an adjustable zipper foot.

12. On inside, with buttonhole twist or heavy-duty thread, make several overcast stitches across zipper teeth below lower small dot. Trim away lower end of zipper tape to within 3/8" (1.5cm) of overcast stitches.

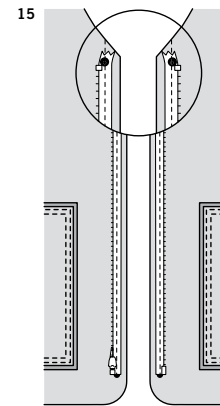


13. Stitch along remaining seam allowances on upper pocket. Turn under raw edges along stitching. Trim to 1/4" (6mm). Press.

14. On outside, pin upper pocket to left front, matching small and large dots. **EDGESTITCH** and **TOPSTITCH** in place.

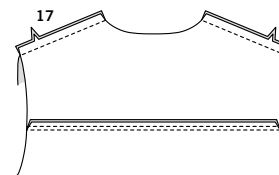
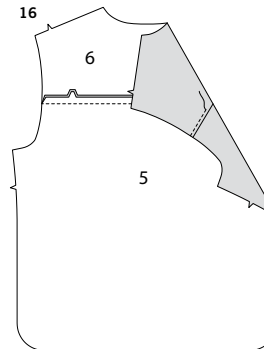
CONTINUE AS FOLLOWS FOR BOTH VIEWS

NOTE: You may need to adjust the length of your Separating Zipper. Always shorten separating zippers from the top. Measure front opening edge between small dots on front edge of front, minus 1/8" (3mm). Mark the desired length on the zipper tape, measuring from the lower edge of the bottom stop. Cut off extra zipper 1" (2.5cm) above mark, making sure that the zipper pull is well below where you are going to cut. Do not discard the pieces. Remove zipper teeth above mark. Using pliers pry the top-stops open and remove them from the discarded pieces of zipper. Reinstall top stops by crimping them in place immediately above the last remaining tooth.



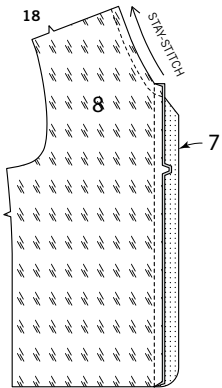
15. Separate zipper. On outside, pin slider side of zipper, face down onto right front opening edge, with lower end of zipper at lower small dot, having inner edge of zipper teeth 1/16" (1.5mm) from seamline and tape in seam allowance. Taper upper end of zipper tape into the seam allowance, as shown. Baste. On outside, pin remaining side of zipper, face down onto the left front opening edge in same manner. Make sure that both sides of zipper are aligned. Baste. Using an adjustable zipper foot, stitch zipper in place 5/8" (1.5cm) from the front edge.

TIP - To avoid bumpy stitching around the tab and slider, stop stitching just before you get to the slider. Leaving the needle in the fabric, raise the presser foot and pull the slider down below the needle. Lower the presser foot and continue stitching.

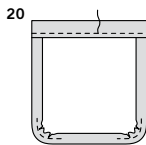
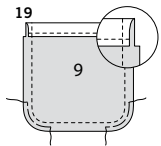


16. With right sides together and raw edges even, pin upper edge of BACK (5) to lower edge of YOKE BACK (6), matching notches. Stitch. Press seam toward yoke. On outside, **TOPSTITCH** yoke along seamline.

17. Stitch front to back at shoulder edges.

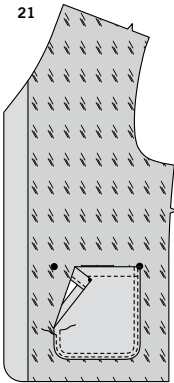


18. With right sides together and raw edges even, pin FRONT FACING (7) to FRONT LINING (8), matching notches. Stitch. Press seam toward facing. If you prefer, on outside, EDGESTITCH facing along seamline. STAYSTITCH neck edge.

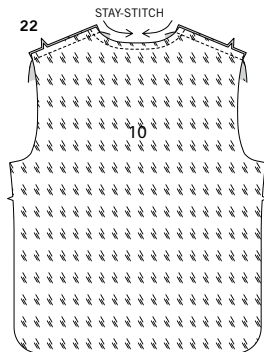


19. Finish upper edge of INSIDE POCKET (9) by stitching 1/4" (6mm) from raw edge and finishing with pinking, overcasting, overlock, or by turning in along stitching. Turn upper edge to outside along foldline, forming facing. Stitch along seamline on raw edges. To ease curved edge of pocket, stitch 1/4" (6mm) outside the seam line, using a long machine-stitch. Trim seam allowance in the facing area to 1/4" (6mm).

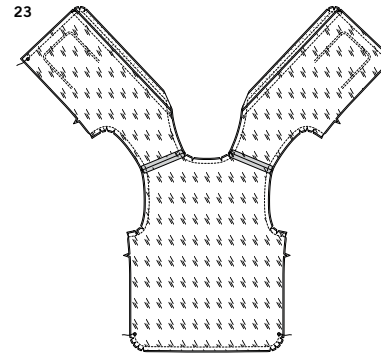
20. Turn corners right side out, turning facing to the wrong side; press, pressing under raw edges along stitching. Pull up ease stitches to shape the curve. To eliminate bulk, notch out the fullness in the seam allowance along the curves as far as the ease stitches. Stitch facing 3/4" (2cm) from upper edge.



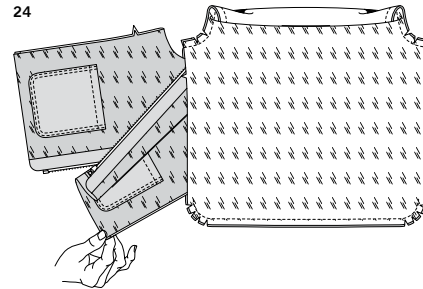
21. On outside, pin inside pocket to front lining, matching large dots. EDGESTITCH and TOPSTITCH close to side and lower edges.



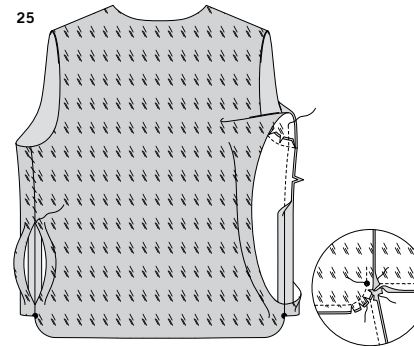
22. With right sides together and raw edges even, stitch front lining to BACK LINING (10) at shoulder edges.



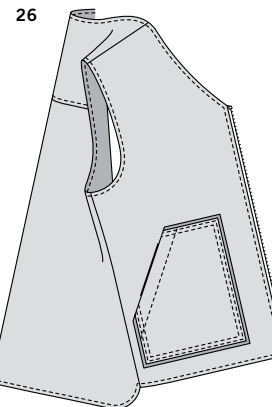
23. With right sides together, pin lining to vest, matching centers and shoulder seams, having raw edges even. Stitch vest along neck and armhole edges. Stitch front edge, using an adjustable zipper foot. Stitch lower edges between the large dots, back-stitching at dots to reinforce the seam. Leave side seams open for turning. TRIM SEAM.



24. Turn vest right side out by pulling each front through shoulder and out one of the back side openings, as shown; press.



25. With right sides together and raw edges even, pin vest and lining at sides, matching armhole seams and large dots. To stitch, begin on lining 1" (2.5cm) above armhole seam; stitch vest seam to large dot, breaking stitching and stitching lining for 1" (2.5cm). Press seam open. Turn in seam allowances of remaining lining edges and SLIPSTITCH together.



26. TOPSTITCH front, neck, armhole and lower edges of vest.



Congrats!

You've completed your sewing adventure

**SHARE
YOUR** LOOK



Post your pattern and tag us
@simplicity_creative_group and **#simplicitypatterns**
for a chance to be featured on our social media.

Look for more PDF patterns at [simplicity.com](https://www.simplicity.com)

Have a question or need help with your sewing project call us at
1-888-588-2700



Simplicity ©2023 a division of IG Design Group Americas Inc. • Atlanta, GA 30342 USA www.thedesigngroup.com • All Rights Reserved. www.simplicity.com • Made in the U.S.A. Fabriqué aux États-Unis.

To be used for individual private home use only and not for commercial or manufacturing purposes. • A usage privé seulement et non à des fins commerciales ou de production en série. • Para uso privado solamente, no se puede utilizar con propósitos de comercialización o de producción en serie.