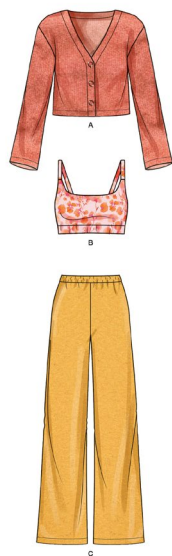


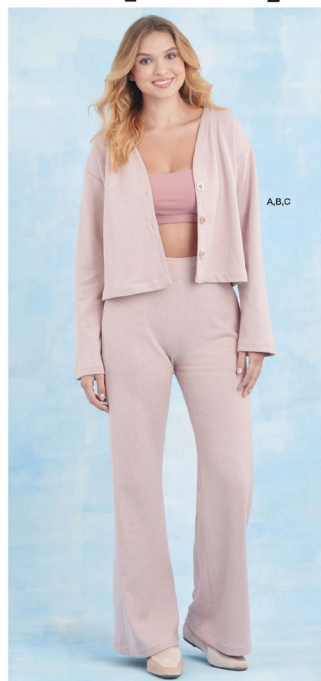
S9857

Simplicity

easy-to-sew



Designed and printed in USA.



Easy

Facile

MISSES' KNIT LOUNGEWEAR

Suggested Fabrics: A,C: Stretch Knits only such as Bamboo, Double Knit, Ponte, Sweater Knit, Sweatshirt Fleece, Terry Knit. B in Activewear Knits, Interlock, Jersey, Rib Knit. See Pick-A-Knit® Rule. **Interfacing:** Lightweight Fusible.

Notions: A: Three ¾" (2cm) buttons. B,C: 13/8 yds. (1.3m) of 1" (2.5cm) elastic.

Sizes	XS	S	M	L	XL	XXL
	4-6	8-10	12-14	16-18	20-22	24-26
European	30-32	34-36	38-40	42-44	46-48	50-52

BODY MEASUREMENTS: Select pattern size based on body measurements

	XS	S	M	L	XL	XXL	Ins.
Bust	29½-30½	31½-32½	34-36	38-40	42-44	46-48	"
Waist	22-23	24-25	26½-28	30-32	34-37	39-41½	"
Hip-9" below waist	31½-32½	33½-34½	36-38	40-42	44-46	48-50	"
Back-neck to waist	15¼-15½	15¾-16	16¼-16½	16¾-17	17¼-17½	17¾-18	"

Cardigan A	60**	1%	1%	1%	1%	1½	1½	Yds.
Interfacing	20"	-	¾ yd.					

Bralette B	60**	¾	¾	¾	¾	¾	¾	Yd.
Pants C	60**	1%	1%	1%	2¼	2¼	2¼	Yds.

FINISHED GARMENT MEASUREMENTS (Includes Design and Wearing Ease)

	XS	S	M	L	XL	XXL	Ins.
A Bust	38	40	43½	47½	51½	55½	"
B Bust	26½	28½	32	36	40	44	"
C Hip	35	37	40½	44½	48½	52½	"
Width, lower edge Cardigan A	38¼	40¼	43¾	47¾	51¾	55¾	Ins.
Width, each leg Pants C	22¾	24	25¾	27½	29¼	31	Ins.
Finished back length from base of neck Cardigan A	17½	18	18½	19	19½	20	Ins.
Bralette B (incl. band)	13¾	14	14¼	14½	14¾	15	"
Finished side length from waist Pants C	39½	40	40½	41	41½	42	Ins.

*with nap **without nap

VÊTEMENTS DE DÉTENTE EN TRICOT POUR JEUNES FEMMES

Tissus Conseillés: A,C : Tricot extensibles seulement tels que Bamboo, Tricot double, Ponte, Tricot pour chandail, Jersey molletonné pour sweat-shirt, Tricot éponge. B en Tricot pour vêtements de sport, Interlock, Jersey, Tricot à côtes. Reportez-vous à la règle Pick-A-Knit®. **Entoilage :** thermocollant léger.

Mercerie: A : 3 boutons de 2cm. B,C: 1.3m d'élastique de 2.5cm.

Tailles	TP/XS	P/S	M/M	G/L	TG/XL	TTG/XXL
Françaises	32-34	36-38	40-42	44-46	48-50	52-54
Européen	30-32	34-36	38-40	42-44	46-48	50-52

MESURES DU CORPS: Choisissez la taille du patron basée sur les mesures du corps

	XS	S	M	L	XL	XXL	cm
Poitrine	75-77	80-83	87-92	97-102	107-112	117-122	"
Taille	56-58	61-64	67-71	76-81	87-94	99-105	"
Hanches (23cm au-dessous de la taille)	80-83	85-88	92-97	102-107	112-117	122-127	cm
Dos du cou à la taille	39-39.5	40-40.5	41.5-42	42.5-43	44-44.5	45-45.5	"

Cardigan A	150cm*	1.3	1.3	1.3	1.3	1.4	1.4	m
Entoilage	51cm	-	0.7m					

Soutien-gorge sans armatures B	150cm*	0.6	0.6	0.6	0.6	0.6	0.7	m
Pantalon C	150cm*	1.5	1.5	1.5	2.1	2.3	2.3	m

MESURES DES VÊTEMENTS FINI (Motif et aisance de port compris)

	XS	S	M	L	XL	XXL	cm
A Poitrine	97	102	110	121	131	141	"
B Poitrine	67	72	81	91	102	112	"
C Hanches	89	94	103	113	123	133	"
Largeur à l'ourlet Cardigan A	97	102	111	121	131	142	cm
Largeur, chaque jambe Pantalon C	58	61	65	70	74	79	cm
Longueur finie – dos, votre nuque à l'ourlet Cardigan A	44	46	47	48	50	51	cm
Soutien-gorge sans armatures B (y compris bande)	35	36	36	37	37	38	cm
Longueur finie – côté, taille à l'ourlet Pantalon C	100	102	103	104	105	107	cm

*avec sens **sans sens



A



B



C

Use the 1 inch (2.54cm) box to ensure you are using rule at 100%

Utilisez la boîte de 2.54 cm pour vous assurer d'utiliser la règle à 100%.

Utilizar un cuadrado de 2.54 cm para asegurarse de estar usando la regla al 100%.

PICK-A-KNIT® RULE

FOR THIS PATTERN - 4" (10 cm) OF KNIT FABRIC MUST STRETCH CROSSWISE FROM HERE
POUR CE PATRON - LE JERSEY DOIT S'ÉTIRER DANS LA LARGEUR DE 4" (10 cm) DEPUIS ICI
PARA ESTE PATRON - LAS MALLAS DEBEN ESTIRARSE A LO ANCHO POR 4" (10 cm) DESDE AQUÍ



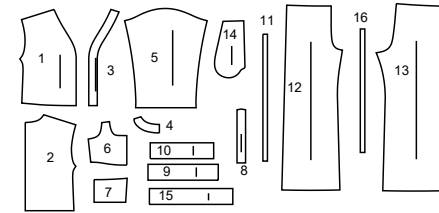
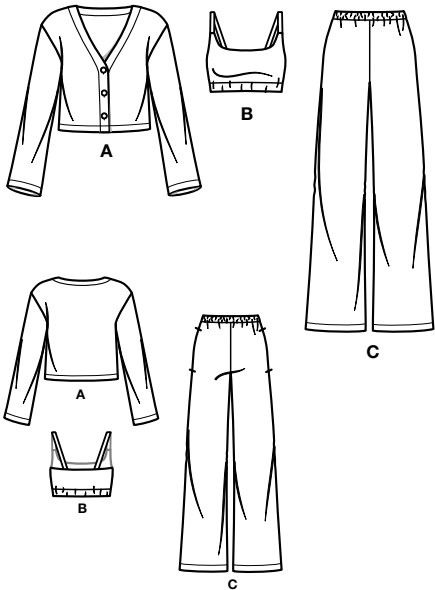
TO HERE 50%
JUSQUE LA 50%
HASTA ALLA 50%



When using the Pick-A-Knit® rule to measure your fabrics stretch capacity, rule must be viewed or printed at 100%.
Quand vous utilisez la règle Pick-A-Knit® pour mesurer la capacité d'élasticité des tissus, la règle doit être visible ou imprimée à 100%.
Al utilizar la regla Pick-A-Knit® para medir la capacidad de elasticidad de las telas, la regla debe estar visible o impresa al 100%.

Simplicity®

Thank you for purchasing this Simplicity pattern. We made every effort to provide you with a high quality product.



- 1 Front-A
- 2 Back-A
- 3 Front Facing-A
- 4 Back Neck Facing-A
- 5 Sleeve-A
- 6 Front-B
- 7 Back-B
- 8 Shoulder Strap-B
- 9 Front Band-B
- 10 Back Band-B
- 11 Guide for Elastic-B
- 12 Front-C
- 13 Back-C
- 14 Pocket-C
- 15 Casing-C
- 16 Guide for Elastic-C

General Directions

The Pattern

- SYMBOLS**
- GRAIN LINE Place on straight grain of fabric parallel to selvage
 - PLACE SOLID LINE on fold of fabric.
 - CENTER FRONT OR BACK OF garment.
 - NOTCHES
 - DOTS
 - CUTTING LINE
 - LENGTHEN OR SHORTEN LINES

SEAM ALLOWANCE: 5/8" (1.5cm) unless otherwise stated is included but not printed on MULTI-SIZE PATTERNS. Mark your size with colored felt tip pen. See chart on tissue for how to use MULTI-SIZE PATTERNS.

ADJUST IF NEEDED
Make adjustments before placing pattern on fabric.

TO LENGTHEN:
Cut pattern between lengthen or shorten lines. Spread pattern evenly, the amount needed and tape to paper.

TO SHORTEN:
At lengthen or shorten lines, make an even pleat taking up amount needed. Tape in place.

When lengthen or shorten lines are not given, make adjustments at lower edge of pattern.

Cutting/Marking

BEFORE CUTTING:
PRESS pattern pieces with a warm dry iron. PRE-SHRINK fabric by pre-washing washables or steam-pressing non-washables.

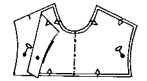
CIRCLE your cutting layout.
PIN pattern to fabric as shown in Cutting Layouts.

- FOR DOUBLE THICKNESS: Fold fabric with RIGHT sides together.
- FOR SINGLE THICKNESS: Place fabric RIGHT side up.
- FOR PILE, SHADED OR ONE WAY DESIGN FABRICS: Use "with nap" layouts

AFTER CUTTING:
Transfer markings to WRONG side of fabric before removing pattern. Use pin and chalk method or dressmaker's tracing paper and wheel.

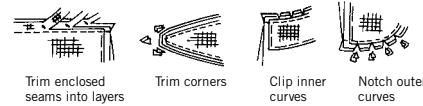
To Quick Mark:

- Snip edge of fabric to mark notches, ends of fold lines and center lines.
- Pin mark dots.



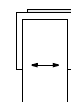
Sewing

- SEW garment following Sewing Directions.
- PIN or machine-baste seams matching notches.
- STITCH 5/8" (1.5 cm) seams unless otherwise stated.
- PRESS seams open unless otherwise indicated clipping when necessary so seams will lie flat.
- TRIM seams to reduce bulk, as shown below.

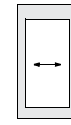


SPECIAL CUTTING NOTES

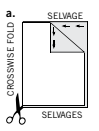
★ If layout shows a piece extending past fold, cut out all pieces except piece that extends.



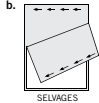
Open out fabric to single thickness. Cut extending piece on RIGHT side of fabric in position shown.



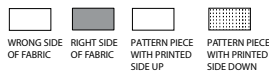
✱ Mark small arrows along both selvages indicating direction of nap or design. Fold fabric crosswise with RIGHT sides together, and cut along fold (a).



Turn one fabric layer around so arrows on both layers go in the same direction. Place RIGHT sides together (b).



Cutting Layouts

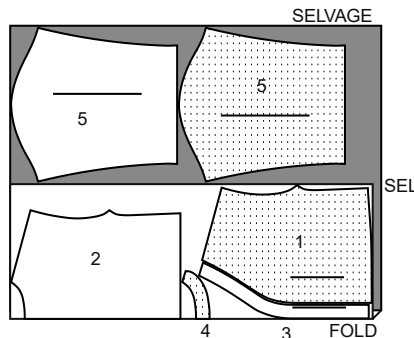


POSITION OF PATTERN PIECES MAY VARY SLIGHTLY ACCORDING TO YOUR PATTERN SIZE

CARDIGAN A

USE PIECES 1 2 3 4 5

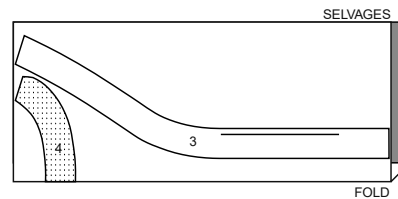
60" (150CM) WITH NAP ALL SIZES



INTERFACING

USE PIECES 3 4

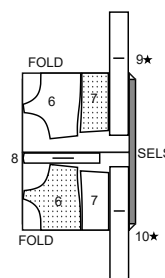
20" (51CM) ALL SIZES



BRALETTE B

USE PIECES 6 7 8 9 10

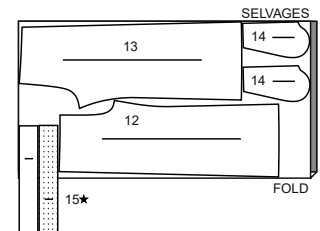
60" (150CM) WITH NAP ALL SIZES



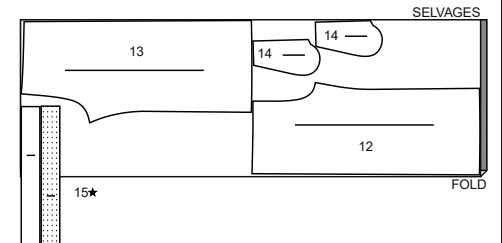
PANTS C

USE PIECES 12 13 14 15

60" (150CM) WITH NAP SIZES XS S M



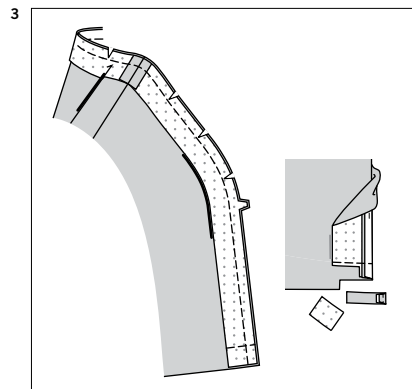
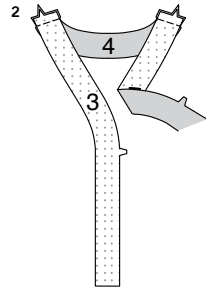
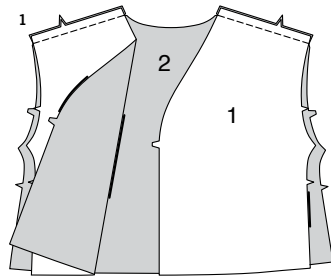
60" (150CM) WITH NAP SIZES L XL XXL



SEWING TUTORIALS



Build your skills viewing short, easy-to-follow videos at simplicity.com/sewingtutorials



Sewing Directions

FABRIC KEY RIGHT SIDE WRONG SIDE INTERFACING LINING LINING

Read **General Directions** on page 1 before you begin.

Sewing methods in **BOLD TYPE** have Sewing Tutorial Video available. Scan QR CODE to watch videos -

REINFORCE- see **Machine Stitches: "how to reinforce"** video.

SLIPSTITCH- see **Hand Stitching - "how to slipstitch"** video.

TRIM- see **"how to trim, clip, and layer seams"** video.

UNDERSTITCH- see **Machine Stitches: "how to understitch"** video.

SIMPLY THE BEST SEWING TECHNIQUES...

FOR KNITS

- Stretch knits need seams that are supple enough to "give" with the fabric. You can sew them with straight stitches (stretching the fabric slightly as you sew), narrow zig-zag stitches or one of the stretch stitches built into many conventional machines, or on your serger.
- Some knits require very little or no pressing while sewing. Use the appropriate temperature setting. Press lightly or use steam.
- To prevent shoulder seams from stretching, pin center of hem tape, clear elastic or twill tape along seam line on front shoulder edges, then stitch the shoulder seams.
- Raw edges of hem and facings are left raw, unless using a serger.

PATTERN PIECES WILL BE IDENTIFIED BY NUMBERS THE FIRST TIME THEY ARE USED.

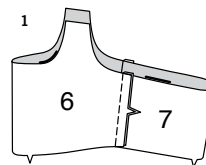
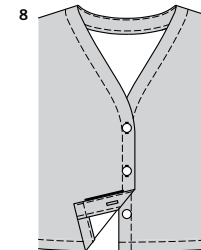
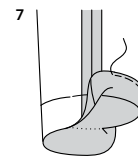
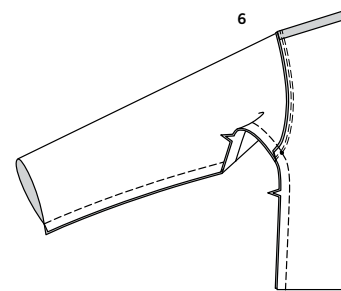
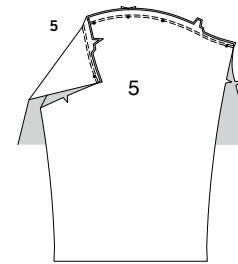
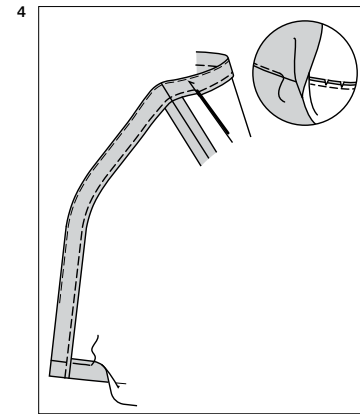
STITCH SEAMS WITH RIGHT SIDES TOGETHER UNLESS OTHERWISE STATED.

CARDIGAN A

1. Stitch front (1) sections to back (2) at shoulder seams.

2. Apply interfacing to **WRONG** side of front facing (3) and back neck facing (4) sections.
Stitch shoulder seams of facing sections.

3. With **RIGHT** sides together and raw edges even, pin facing to cardigan, matching centers back and shoulder seams.
Stitch along seam line on front and neck edges.
Stitch across lower edges of facing exactly 1-1/4" (3.2cm) from raw edges.
Trim lower edges of facing close to stitching; trim cardigan to within 5/8" (1.5cm) of inner edge of facing.
TRIM remaining seams and clip curves.



4. **UNDERSTITCH** facing as far as possible by pressing facing and seam away from cardigan, stitching through facing and seam allowances close to seam far as possible.
Turn facing to **INSIDE**; press, pressing up 1-1/4" (3.2cm) hem on lower edge.
Stitch 1/4" (6mm) from raw edge of facing.
Hand-baste hem in place from front edge to an inch or so past inner edge of facing.

5. Pin sleeve (5) to armhole edges of cardigan with center small dot at shoulder seam, matching underarm seams, notches and remaining small dots. Baste. Stitch.
Stitch again 1/8" (3mm) from first stitching between outer small dots.
Trim seam below notches close to stitching.
Turn seam toward sleeve; lightly press.

6. Pin front to back at underarm and side seam, matching small dots on armhole seams.
Stitch entire seam.
REINFORCE underarm curve.

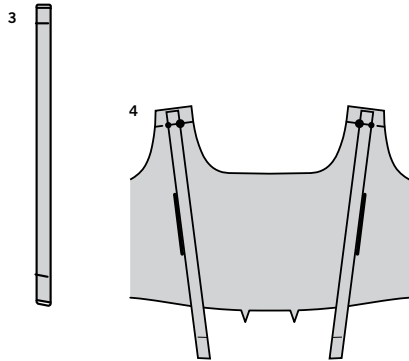
7. Press up 1-1/4" (3.2cm) hem on lower edge of sleeve.
Stitch 1/4" (6mm) from raw edge.

8. Press up remainder of hem on lower edge of cardigan; stitch 1/4" (6mm) from raw edge between front opening edges.
Make buttonholes in **RIGHT** front at markings.
Lap **RIGHT** front over **LEFT**, matching centers. Sew buttons under buttonholes.

BRALETTE B

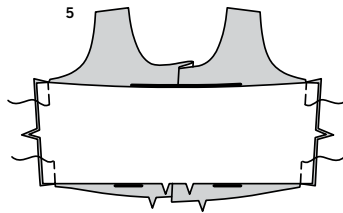
1. Stitch one front (6) section to one back (7) section at side seams. This is the bralette; set aside remaining sections to be used as front and back facings.

2. Fold shoulder strap (8) in half, lengthwise, with **RIGHT** sides together. Stitch in a 3/8" (1cm) seam, leaving ends open.

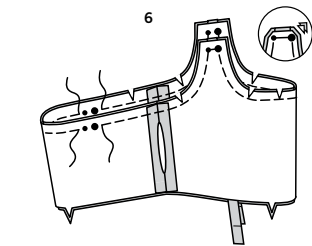


3. Turn strap **RIGHT** side out; press. Baste raw edges together.

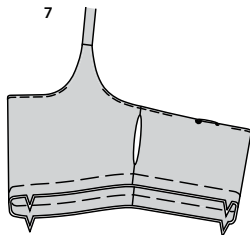
4. Turn bralette **RIGHT** side out. On **OUTSIDE**, baste straps to upper edge of front, matching small and large dots, having raw edges even. You will notice that the straps have an extra allowance at the back edge; this is for adjustment. The back ends of the strap will be adjusted in a later step.



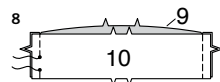
5. Pin front facing to back facing at side seams. Stitch side seams, leaving an opening on each seam 3-1/2" (9cm) wide; back-stitch at ends of opening to reinforce seam.



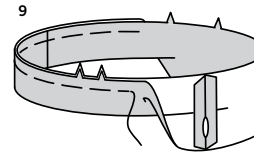
6. With **RIGHT** sides together and raw edges even, pin facing to bralette along upper edge (over straps), matching centers, side seams, small and large dots. Stitch upper edges together, pivoting with needle in fabric at small and large dots on front, and stitching to within 1/4" (6mm) of small and large dots on back, leaving openings to insert free ends of straps. **TRIM** seam and corners, avoiding seams on strap openings. Clip curves.



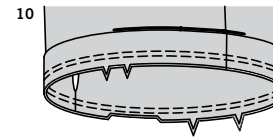
7. Turn facing to **INSIDE**, pulling out straps. Starting and ending 1-1/2" (3.8cm) away from large dots on back, **UNDERSTITCH** by pressing facing and seam away from bralette, stitching through facing and seam allowances close to seam as far as possible. **UNDERSTITCH** back facing to within 1-1/2" (3.8cm) of small dots in same manner. Turn facing to **INSIDE**; press. Baste raw edges together, matching centers and seams.



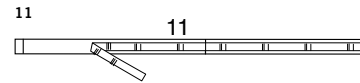
8. Stitch ends of front band (9) and back band (10) together, leaving an opening in **LEFT** side seam between small dots, as shown. Back-stitch at small dots to reinforce seam.



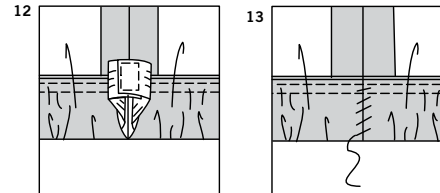
9. Press seams open. Fold band in half along foldline, with **WRONG** sides together, having raw edges even. Baste raw edges together. The side with the opening is the underside of the casing.



10. With **RIGHT** sides together and raw edges even, pin band to bralette, matching centers, and side seams, having the underside of casing facing you. Stitch along seam line, stretching band to fit. Stitch again 1/4" (6mm) from first stitching within seam allowance, stretching band to fit. Trim close to second stitching. Press seam toward bralette, pressing band out.

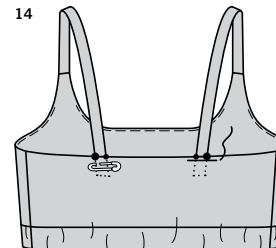


11. Cut a piece of elastic the length of guide elastic guide (11).

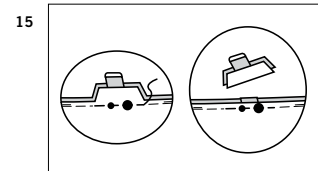


12. Insert elastic through opening in casing. Overlap ends and stitch securely together.

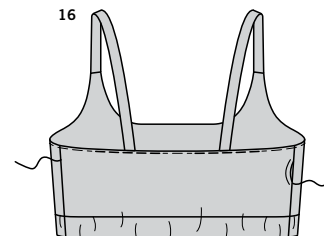
13. **SLIPSTITCH** opening edges of casing together. Distribute fullness evenly. **TIP**-To secure elastic so it won't twist in wearing, stitch through all thicknesses of casing in the groove of each seam.



14. Insert back ends of straps through openings in upper back edge of bralette, matching small and large dots. Pin in place with safety pins. Try on bralette and adjust the length of straps so that they fit comfortably. Baste.

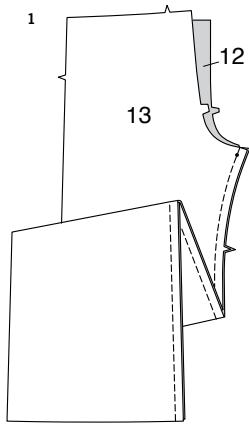


15. Insert hand through opening in each side seam; pull out pinned strap and seam as much as possible and stitch opening closed. **TRIM** remainder of seam, trimming ends of straps as necessary.

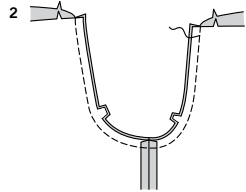


16. Stretch openings on side seam and so that you can separate facing from bralette. **UNDERSTITCH** remainder of back facing as far as possible, connecting to previous understitching. **SLIPSTITCH** openings closed.

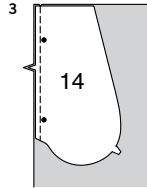
PANTS C



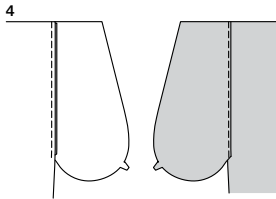
- 1.** Pin front (12) to back (13) at inner leg seam, matching small dots and notches. Stitch, stretching back to fit.



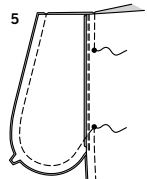
- 2.** Pin center seam, matching inner leg seams and notches. Stitch. **REINFORCE** seam.



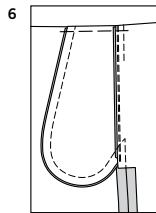
- 3.** Apply pockets to side edges of front and back, as follows: With **RIGHT** sides together, pin pocket (14) to pants, matching large dots, having raw edges even. Stitch in a 3/8" (1cm) seam.



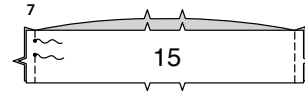
- 4.** Press seam toward pocket, pressing pocket out. **UNDERSTITCH** front pocket by stitching through pocket and seam allowance close to seat.



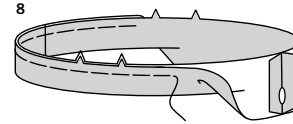
- 5.** Pin front to back at side seams, matching large dots. Stitch side seams, leaving an opening between large dots, back-stitch at large dot to reinforce seam. Stitch pocket edges together from side seam to upper edge.



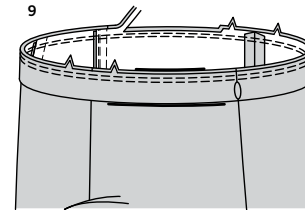
- 6.** Clip pants back seam allowance at lower end of pocket. Press seams open below clip. Press pocket toward front. Baste 1/4" (6mm) from upper edge of pocket.



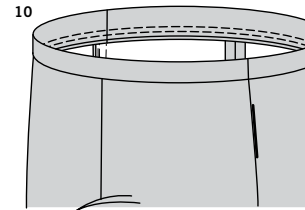
- 7.** With **RIGHT** sides together, stitch seams of casing (15), leaving an opening in **LEFT** side seam between small dots, as shown. Back-stitch at small dots to reinforce seam.



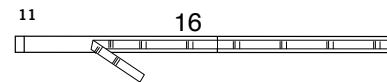
- 8.** Press seams open. Fold casing along foldline, lengthwise, with **WRONG** sides together, having raw edges even. Baste raw edges together. The side with the opening is the underside of the casing.



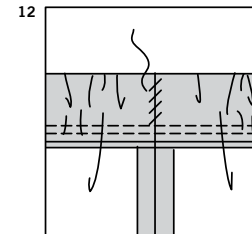
- 9.** With the underside of casing facing you, pin casing to pants matching centers and side seams. Stitch along seam line. Stitch again 1/4" (6mm) from first stitching within seam allowance. Trim close to second stitching.



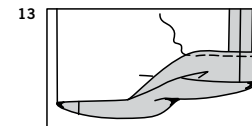
- 10.** Press seam toward pants, pressing casing out.



- 11.** Cut a piece of elastic the length of guide for elastic (16). Insert elastic through opening in casing. Overlap ends and stitch securely together.



- 12. SLIPSTITCH** opening edges of casing together. Distribute fullness evenly. **TIP**-To secure elastic so it won't twist in wearing, stitch through all thicknesses of casing in the groove of each seam.



- 13.** Press up 1-1/4" (3.2cm) hem. Stitch 1/4" (6mm) from raw edge.



Congrats!

You've completed your sewing adventure

**SHARE
YOUR** LOOK



Post your pattern and tag us
@simplicity_creative_group and **#simplicitypatterns**
for a chance to be featured on our social media.

Look for more PDF patterns at [simplicity.com](https://www.simplicity.com)

Have a question or need help with your sewing project call us at
1-888-588-2700



Simplicity ©2023 a division of IG Design Group Americas Inc. • Atlanta, GA 30342 USA www.thedesigngroup.com • All Rights Reserved. www.simplicity.com • Made in the U.S.A. Fabriqué aux États-Unis.

To be used for individual private home use only and not for commercial or manufacturing purposes. • A usage privé seulement et non à des fins commerciales ou de production en série. • Para uso privado solamente, no se puede utilizar con propósitos de comercialización o de producción en serie.