

S9855

Simplicity®



A



A



B



A,B



Average

Moins Facile

MISSES' AND WOMEN'S TOP AND PANTS

Suggested Fabrics: A: Cotton Blends, Lightweight Linen Blends, Poplin. B: Cotton Blends, Gabardine, Linen Blends, Stretch Wovens, Twill, Wool Blends. **Interfacing:** Lightweight Fusible.

Notions: A: Invisible separating zipper: 18" (46cm - adjust to fit) for Misses, 22" (56cm - adjust to fit) for Women, eight ½" (1.3cm) buttons, ¼" (6mm) featherweight boning: 1¼ yds. (1.1m) for Misses, 1¼ yds. (1.2m) for Women. B: 7" (18cm) zipper (adjust to fit), one ¾" (1cm) button, one hook and bar.

MISSES' SIZES	10	12	14	16	18
EUROPEAN	36	38	40	42	44

BODY MEASUREMENTS: Select pattern size based on body measurements

Bust	32½	34	36	38	40	Ins.
Waist	25	26½	28	30	32	"
Hip-9" below waist	34½	36	38	40	42	"
Back-neck to waist	16	16¼	16½	16¾	17	"

Top A	45**	2½	2½	2½	2½	2½	Yds.
	60**	1½	1½	1½	1½	1½	"
Interfacing	20" - 1¼ yds.						

Pants B	45**	2½	2½	2½	2½	2½	Yds.
	60**	1¾	1¾	1¾	1¾	2	"
Interfacing	20" - ½ yd.						

WOMEN'S SIZES	20W	22W	24W	26W	28W	30W	32W	34W	36W	38W
EUROPEAN	46	48	50	52	54	56	58	60	62	64

BODY MEASUREMENTS: Select pattern size based on body measurements

Bust	42	44	46	48	50	52	54	56	58	60	Ins.
Waist	35	37	39	41½	44	46½	49	51½	53	54½	"
Hip-9" below waist	44	46	48	50	52	54	56	58	60	62	"
Back-neck to waist	17¼	17½	17¾	17¾	17¾	17¾	18	18½	18¾	18¾	"

Top A	45**	2½	2½	2½	2½	2½	3	3½	3½	3½	Yds.
	60**	2½	2½	2½	2½	2½	2½	2½	2½	2½	"
Interfacing	20" - 1¼ yds.										

Pants B	45**	2½	2½	2½	3	3	3½	3½	3½	3½	Yds.
	60**	2½	2½	2½	2½	2½	2½	2½	2½	2½	"
Interfacing	20" - ¾ yd.										

NOTE: Please refer to the sewing instructions for **FINISHED GARMENT MEASUREMENTS**.

*with nap **without nap

HAUT ET PANTALON POUR JEUNES FEMMES ET FEMMES

Tissus Conseillés: A: Cotonnades, Toile de lin mélangés légers, Popeline. B: Cotonnades, Gabardine, Lin mélangés, Tissus tissés extensibles, Twill, Mélanges de laine. **Entoilage:** Thermocollant léger.

Mercerie: A : fermeture à glissière invisible séparable : 46cm (à ajuster) pour Jeunes femmes, 56cm (à ajuster) pour Femmes, 8 boutons de 1.3cm, baleine très légère de 6mm: 1.1m pour Jeunes femmes, 1.2m pour Femmes. B : fermeture à glissière de 18cm (à ajuster), 1 bouton de 1 cm, 1 crochet pour pantalon.

TAILLES (J. FEMMES)	10	12	14	16	18
FRANÇAISES	38	40	42	44	46
EUROPÉEN	36	38	40	42	44

MESURES DU CORPS: Choisissez la taille du patron basée sur les mesures du corps

Poitrine	83	87	92	97	102	cm
Taille	64	67	71	76	81	"
Hanches (23cm au-dessous de la taille)	88	92	97	102	107	cm
Dos du cou à la taille	40.5	41.5	42	42.5	43	"

Haut A	115cm*	1.8	1.9	1.9	2.1	2.1	m
	150cm*	1.5	1.5	1.5	1.5	1.6	"
Entoilage	51cm - 1.3m						

Pantalon B	115cm*	2.1	2.1	2.1	2.2	2.2	m
	150cm*	1.6	1.6	1.6	1.7	1.8	"
Entoilage	51cm - 0.5m						

TAILLES (FEMMES)	20W	22W	24W	26W	28W	30W	32W	34W	36W	38W
FRANÇAISES	48	50	52	54	56	58	60	62	64	66
EUROPÉEN	46	48	50	52	54	56	58	60	62	64

MESURES DU CORPS: Choisissez la taille du patron basée sur les mesures du corps

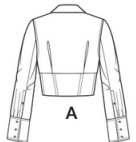
Poitrine	107	112	117	122	127	132	137	142	147	152	cm
Taille	89	94	99	105	112	118	124	130	134	138	"
Hanches (23cm au-dessous de la taille)	112	117	122	127	132	137	142	147	152	157	cm
Dos du cou à la taille	44	44	44.5	45	45	45.5	46	46	46.5	47	"

Haut A	115cm*	2.2	2.4	2.5	2.6	2.6	2.7	3.1	3.1	3.2	m
	150cm*	1.9	2.1	2.1	2.2	2.2	2.2	2.3	2.4	2.4	"
Entoilage	51cm - 1.7m										

Pantalon B	115cm*	2.6	2.6	2.6	2.7	2.7	2.9	2.9	3.0	3.1	m
	150cm*	2.1	2.1	2.1	2.1	2.2	2.2	2.4	2.6	2.7	"
Entoilage	51cm - 0.8m										

NOTE: S'il vous plaît, reportez-vous aux instructions de couture pour les **MESURES DU VÊTEMENT FINI**.

*avec sens **sans sens



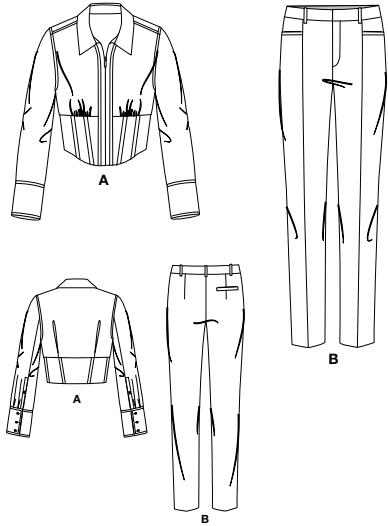
A



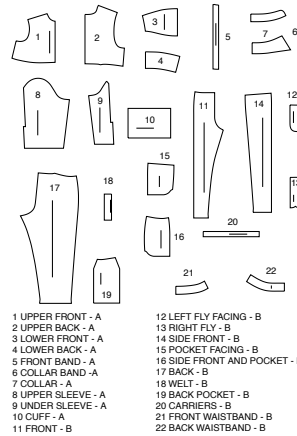
B

Simplicity®

Thank you for purchasing this Simplicity pattern.
We made every effort to provide you with a high quality product.

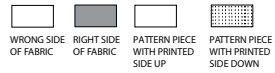


22 PIECES



MISSSES' SIZES	10	12	14	16	18
EUROPEAN	36	38	40	42	44
FINISHED GARMENT MEASUREMENTS (Includes Design and Wearing Ease)					
A Bust	36	37 1/2	39 1/2	41 1/2	43 1/2
B Waist	26 1/2	28	30	32	34
B Hip	37	38 1/2	40 1/2	42 1/2	44 1/2
Width, each leg	13	13 1/4	14	14 1/4	15
Finished side length from waist	38	38 1/4	38 1/2	38 3/4	39
Pants B					
EUROPEAN	46	48	50	52	54
20W	22W	24W	26W	28W	30W
32W	34W	36W	38W		
FINISHED GARMENT MEASUREMENTS (Includes Design and Wearing Ease)					
A Bust	45 1/2	47 1/2	49 1/2	51 1/2	53 1/2
B Waist	36	38	40	42	44
B Hip	44 1/2	46 1/2	48 1/2	50 1/2	52 1/2
Width, each leg	17	17 1/4	18	18 1/4	19
Finished side length from waist	38 1/2	39	39 1/4	39 1/2	40
Pants B					
EUROPEAN	46	48	50	52	54
20W	22W	24W	26W	28W	30W
32W	34W	36W	38W		

Cutting Layouts

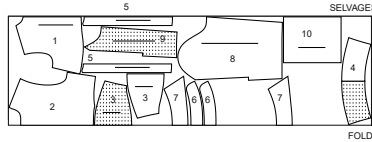


POSITION OF PATTERN PIECES MAY VARY
SLIGHTLY ACCORDING TO YOUR PATTERN SIZE

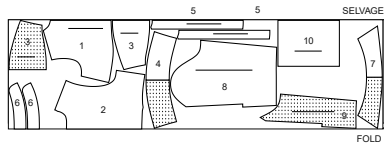
TOP A

USE PIECES 1 2 3 4 5 6 7 8 9 10

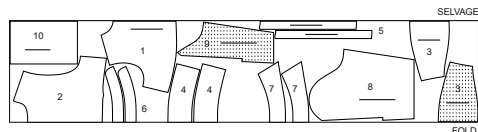
45" (115CM)
WITH NAP
SIZES 10 12 14



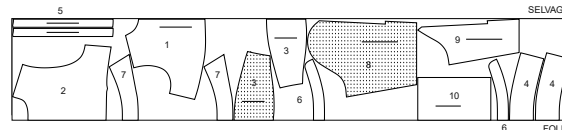
45" (115CM)
WITH NAP
SIZES 16 18



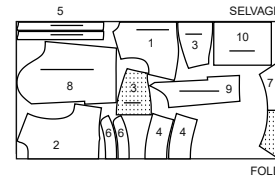
45" (115CM)
WITH NAP
SIZES 20W 22W
24W 26W 28W 30W



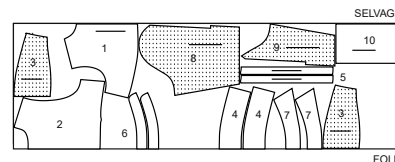
45" (115CM)
WITH NAP
SIZES 32W 34W 36W 38W



60" (150CM)
WITH NAP
SIZES 10 12 14 16 18

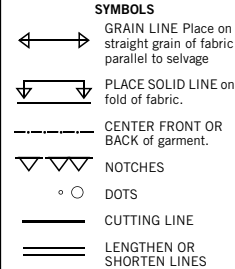


60" (150CM)
WITH NAP
SIZES 20W 22W 24W 26W 28W 30W 32W 34W 36W 38W



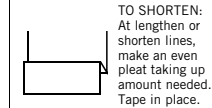
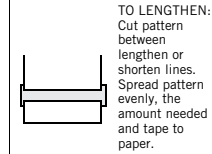
General Directions

The Pattern



SEAM ALLOWANCE: 5/8" (1.5cm)
unless otherwise stated is included but not printed on MULTI-SIZE PATTERNS.
Mark your size with colored felt tip pen.
See chart on tissue for how to use MULTI-SIZE PATTERNS.

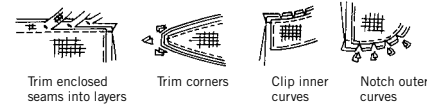
ADJUST IF NEEDED
Make adjustments before placing pattern on fabric.



When lengthen or shorten lines are not given, make adjustments at lower edge of pattern.

Sewing

- SEW garment following **Sewing Directions**.
- PIN or machine-baste seams matching notches.
- STITCH 5/8" (1.5 cm) seams unless otherwise stated.
- PRESS seams open unless otherwise indicated clipping when necessary so seams will lie flat.
- TRIM seams to reduce bulk, as shown below.



Cutting/Marking

BEFORE CUTTING:

PRESS pattern pieces with a warm dry iron. PRE-SHRINK fabric by pre-washing washables or steam-pressing non-washables.

CIRCLE your cutting layout.

PIN pattern to fabric as shown in Cutting Layouts.

• FOR DOUBLE THICKNESS: Fold fabric with RIGHT sides together.

• FOR SINGLE THICKNESS: Place fabric RIGHT side up.

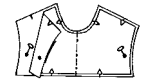
• FOR PILE, SHADED OR ONE WAY DESIGN FABRICS: Use "with nap" layouts

AFTER CUTTING:

Transfer markings to WRONG side of fabric before removing pattern. Use pin and chalk method or dressmaker's tracing paper and wheel.

To Quick Mark:

- Snip edge of fabric to mark notches, ends of fold lines and center lines.
- Pin mark dots.



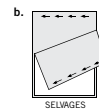
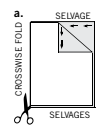
SPECIAL CUTTING NOTES

★ If layout shows a piece extending past fold, cut out all pieces except piece that extends.

Open out fabric to single thickness. Cut extending piece on RIGHT side of fabric in position shown.

✱ Mark small arrows along both selvages indicating direction of nap or design. Fold fabric crosswise with RIGHT sides together, and cut along fold (a).

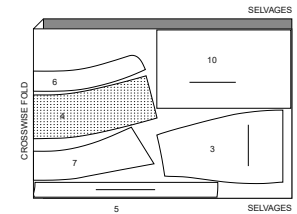
Turn one fabric layer around so arrows on both layers go in the same direction. Place RIGHT sides together (b).



INTERFACING

USE PIECES 3 4 5 6 7 10

20" (51CM)
ALL SIZES

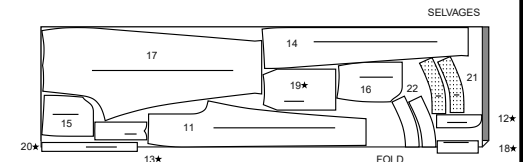


PANTS B

USE PIECES 11 12 13 14 15 16 17 18 19 20 21 22

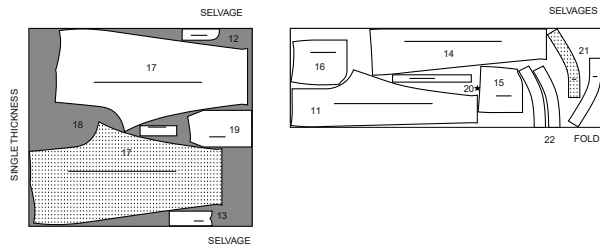
45" (115CM)
WITH NAP
SIZES 10 12 14 16 18

CUT ONE OF PIECES 12 13 19

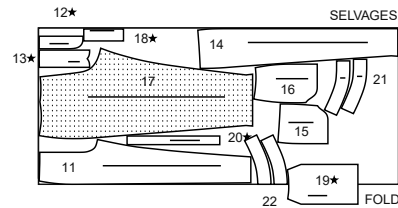


CUTTING LAYOUTS CONTINUED ON PAGE 2

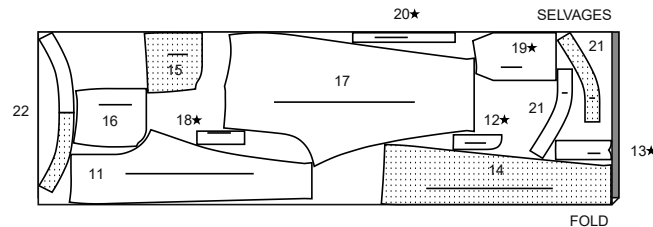
45" (115CM)
WITH NAP
SIZES 20W 22W 24W 26W 28W 30W 32W
34W 36W 38W
CUT ONE OF PIECE 20



60" (150CM)
WITH NAP
SIZES 10 12 14 16 18
CUT ONE OF PIECES 12 13 18 20



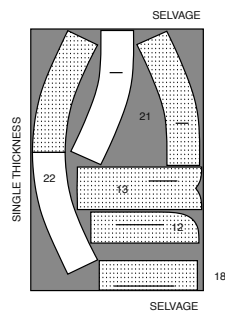
60" (150CM)
WITH NAP
SIZES 20W 22W 24W 26W 28W 30W 32W 34W 36W 38W
CUT ONE OF PIECES 12 13 18 19 20



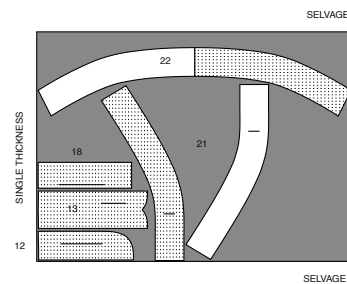
INTERFACING

USE PIECES 12 13 18 21 22

20" (51CM)
SIZES 10 12 14 16 18



20" (51CM)
SIZES 20W 22W 24W 26W 28W 30W 32W 34W 36W 38W



SEWING TUTORIALS



Build your skills viewing short, easy-to-follow videos at
simplicity.com/sewingtutorials

Sewing Directions

FABRIC
KEY



Read **General Directions** on page 1 before you begin.

Sewing methods in **BOLD TYPE** have Sewing Tutorial Video available.
Scan QR CODE to watch videos:

BELT LOOP/CARRIER – see **Loops and Straps**: “how to sew belt loops” video.

EASE/GATHER – see **Gathering**: “sewing two row gathers” video.

EDGESTITCH – see **Machine Stitches**: “how to sew an edgestitch” video.

FLAT DART – see **Darts**: “sewing flat dart” video.

NARROW HEM – see **Hems**: “sewing narrow hems” video.

SLEEVE – see **Armholes/Sleeves**: “sewing a set in sleeve” video.

SLIP STITCH – see **Hand Stitching**: “how to slip stitch” video.

STAYSTITCH – see **Machine Stitches**: “how to do stay stitching” video.

STITCH IN THE DITCH – see **Machine Stitches**: “how to stitch in the ditch” video.

TOPSTITCH – see **Machine Stitches**: “how to topstitch” video.

TRIM SEAM – see **Seams**: “how to trim, clip and layer seams” video.

UNDERSTITCH – see **Machine Stitches**: “how to understitch” video.

PATTERN PIECES WILL BE IDENTIFIED BY NUMBERS THE FIRST TIME THEY ARE USED.

STITCH 5/8" (1.5CM) SEAMS WITH RIGHT SIDES TOGETHER UNLESS OTHERWISE STATED.

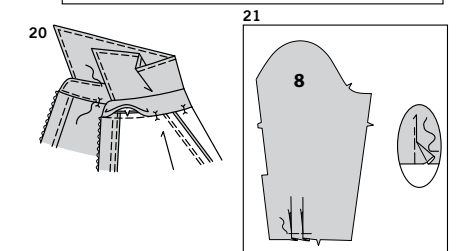
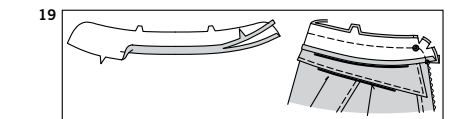
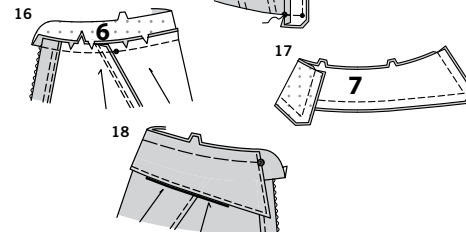
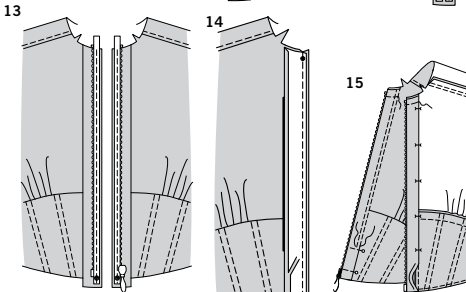
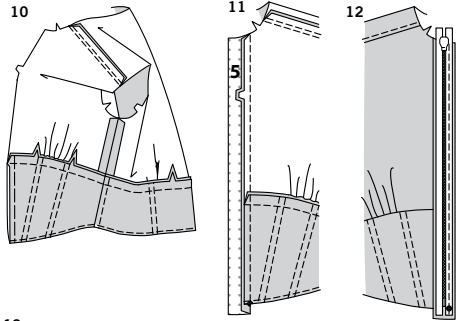
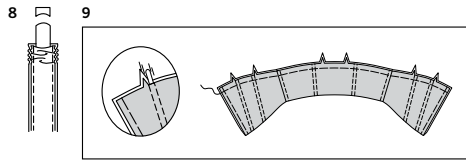
TOP A

INTERFACING

1. Pin interfacing to **WRONG** side of **LOWER FRONT** (3), **LOWER BACK** (4), **FRONT BAND** (5), **COLLAR BAND** (6), **COLLAR** (7), and **CUFF** (10). Fuse interfacing in place following manufacturer's directions.

FRONT AND BACK

2. **STAYSTITCH** neck edge of **UPPER FRONT** (1) 1/2" (1.3cm) from raw edge. **GATHER** lower edge between notches.
3. **STAYSTITCH** neck edge of **UPPER BACK** (2) 1/2" (1.3cm) from raw edge. To make pleats, on **INSIDE**, bring broken lines together, matching small dots. Stitch along broken lines to small dots. Press pleats toward center. Baste.
4. Stitch front to back at forward shoulder edges. Press seam toward back. Stitch front to back at side edges. **TOPSTITCH** back at shoulder.
5. Stitch **LOWER FRONT** (3) to **LOWER BACK** (4) at side edges.
6. Stitch lower front and lower back facing at sides. With **RIGHT** sides together, pin facing to lower front and back along lower edge, matching seams. Stitch.
7. **UNDERSTITCH** the facing. Turn facing inside; press. Baste 3/8" (1cm) from front edges of lower front. To make channels for boning, on **OUTSIDE**, stitch along stitching lines, and 3/8" (1cm) from side seams on back.



- 8.** Cut strips of boning each the length of stitched casing, excluding upper seam allowances. Remove boning from casing. Trim 1/4" (6mm) of boning from each end, curving ends, as shown.
- 9.** Insert boning between stitching lines, and side seam allowances on back. Baste 5/8" (1.5cm) from notched edge of lower front and back, being careful not to catch in boning.
- 10.** With **RIGHT** sides together and raw edges even, pin lower top to upper top, matching seams and notches, pulling up gathering stitches. Baste; stitch. Press seam toward upper top.
- 11.** With **RIGHT** sides together and raw edges even, pin **FRONT BAND** (5) to top, matching small dots and notches. Stitch in a 3/8" (1cm) seam. Press band out, pressing seam toward band.

ZIPPER

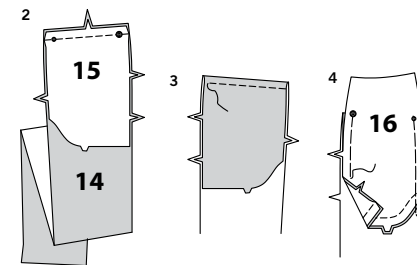
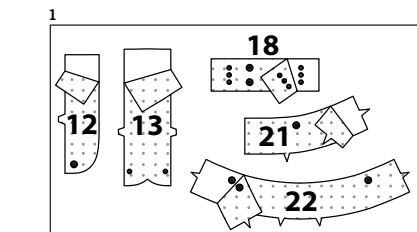
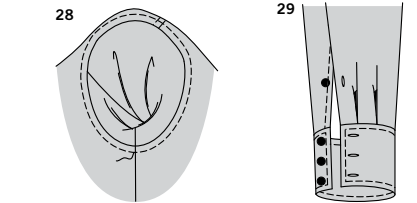
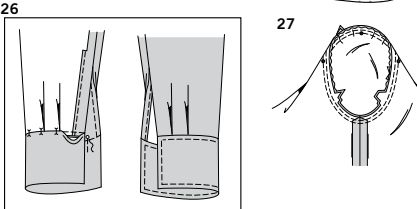
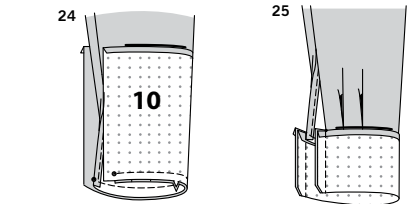
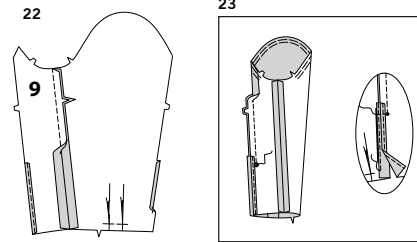
- 12.** Uncoil the zipper and press the tape flat. On **OUTSIDE**, pin the closed zipper face down on the **RIGHT** front edge, placing lower edge of zipper just above the small dot, the coil along the 3/8" (1cm) seamline, and the tape within the seam allowance. (Note that the closed zipper extends above the upper edge of front and will be cut away after the collar band is applied). Hand-baste along center of tape. Position an adjustable zipper foot over coil; stitch.
- 13.** Slide the pull tab down, opening the zipper. Pin the remaining half of the zipper to the **LEFT** front in the same manner. Hand-baste along center of tape. Position an adjustable zipper foot over coil; stitch.
- 14.** Press under a generous 3/8" (1cm) on notched edge of front band facing. Trim to 1/4" (6mm). Pin unnotched edge of facing to front band (over zipper), matching small dots. Stitch 1/4" (6mm) from raw edge through all thicknesses. Stitch across lower end. **TRIM SEAM.**
- 15.** Turn band facing to inside; press. On **INSIDE**, pin pressed edge of facing over seam, placing pins on **OUTSIDE**. On **OUTSIDE**, **STITCH IN THE DITCH** of the seam, catching in pressed edge of facing on the **INSIDE**. Baste across upper edge of facing. Trim zipper to raw edge. **TOPSTITCH** front band 1/4" (6mm) from seam.

COLLAR BAND AND COLLAR

- 16.** Clip garment neck edge to stay-stitching. With **RIGHT** sides together, pin single notched edge of **COLLAR BAND** (6) to neck edge, matching centers back and placing small dots at shoulder seams. (Collar band extends 5/8" (1.5cm) beyond front opening edges.) Stitch neck edge. Trim seam; clip curves. Press band out; press seam toward band.
- 17.** With **RIGHT** sides together and raw edges even, stitch facing to **COLLAR** (7), leaving notched edges open. **TRIM SEAM.**
- 18.** Turn collar; press. Machine-baste raw edges together. **EDGE STITCH** finished edges, or if you prefer, **TOPSTITCH** finished edges. With **RIGHT** sides together and raw edges even, pin collar (facing side) to collar band, matching centers back and double notches and placing ends at small dots. Machine-baste.
- 19.** Press under 5/8" (1.5cm) on single notched edge of collar band facing; trim to 1/4" (6mm). With **RIGHT** sides together, pin collar band facing to collar band (over collar), matching centers. Stitch front and double notched edge. **TRIM SEAM.**
- 20.** Turn band facing to **INSIDE**; press. Pin pressed edge of facing over seam, placing pins on **OUTSIDE**. On **OUTSIDE**, stitch close to all edges of collar band, catching in pressed edge of facing on inside.

SLEEVE

- 21.** To make pleats on **UPPER SLEEVE** (8), on **OUTSIDE**, fold along solid lines. Bring folds to broken lines; pin. Baste across raw edge.



- 22.** Stitch upper sleeve to **UNDER SLEEVE** (9) at underarm edge. Press under 1/4" (6mm) on upper sleeve extension. Press under 5/8" (1.5cm) on under sleeve extension and **NARROW HEM.**

- 23.** Stitch upper sleeve to under sleeve at back edge from armhole edge to large dot, back-stitching at dot to reinforce the seam. Press seam and extensions along foldlines toward upper sleeve. Stitch across extensions from large dot, and **EDGE STITCH** inner pressed edge of upper sleeve extension. **EASE** top of sleeve between the notches.

- 24.** Press under 1/2" (1.3cm) on unnotched edge of **CUFF** (10). Trim to 1/4" (6mm). With **RIGHT** sides together, pin sleeve to cuff, placing opening edges at small dots. Baste; stitch. **TRIM SEAM.**

- 25.** Press seam toward cuff, pressing cuff out. Fold cuff along foldline with **RIGHT** sides together. Stitch ends. **TRIM SEAM.**

- 26.** Turn cuff; press. On **INSIDE**, pin pressed edge of cuff over seam, placing pins on **OUTSIDE**. On **OUTSIDE**, **STITCH IN THE DITCH** of the seam, catching in pressed edge of facing on the **INSIDE**. **TOPSTITCH** cuff 1/4" (6mm) from seam and finished edges.

- 27. SET IN SLEEVE.** Turn sleeve **RIGHT** side out. Hold top **WRONG** side out with armhole toward you. With **RIGHT** sides together, pin sleeve to armhole edge matching small dots and notches, pulling up ease stitches to fit. Baste. Stitch. Stitch again 1/8" (3mm) from first stitching. Trim seam below notches close to stitching. Press only the seam allowance, shrinking out fullness.

- 28.** On outside, **TOPSTITCH** front and back 1/4" (6mm) from armhole seam.

- 29.** Make buttonholes at markings on cuff and upper sleeve extension. Sew buttons to cuff and under sleeve at small dots.

PANTS B

INTERFACING

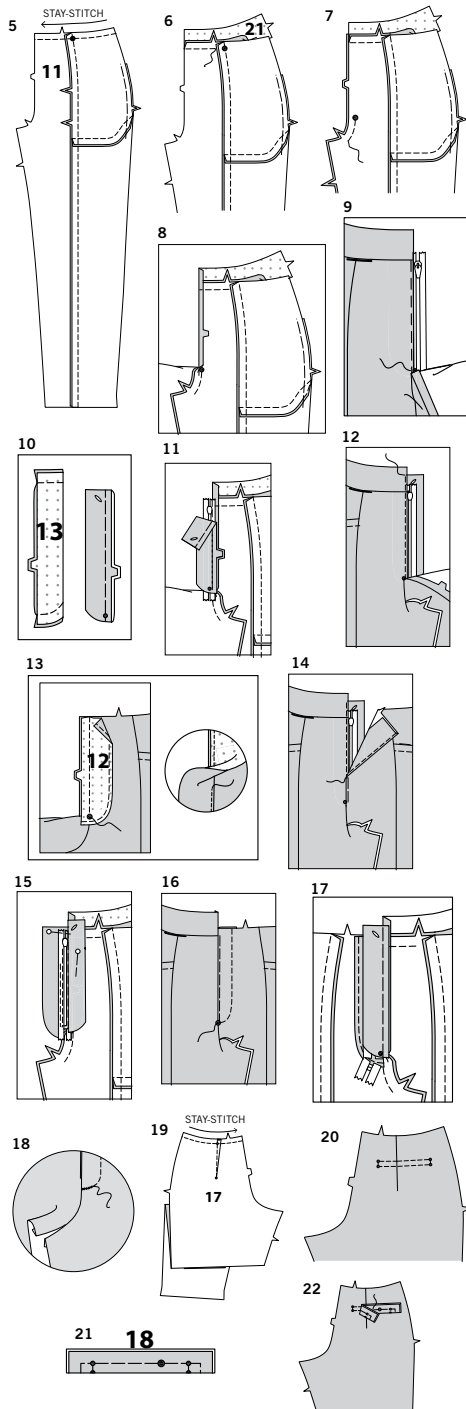
- 1.** Pin interfacing to **WRONG** side of **LEFT FLY FACING** (12), **RIGHT FLY** (13), **WELT** (18), **FRONT WAISTBAND** (21), and **BACK WAISTBAND** (22). Fuse interfacing in place following manufacturer's directions.

SIDE FRONT AND POCKET

- 2.** With **RIGHT** sides together, pin **POCKET FACING** (15) to **SIDE FRONT** (14) along upper edge, matching small dots, large dots, and notches. Stitch.
- 3.** Turn pocket facing to **INSIDE**; press. Stitch 1/2" (1.3cm) from finished edge.
- 4.** With **RIGHT** sides together, pin **SIDE FRONT AND POCKET** (16) to pocket facing and side front, matching small dots, large dots, and notches. Stitch lower edge of pocket. Baste raw edges together through all thicknesses.

S9855

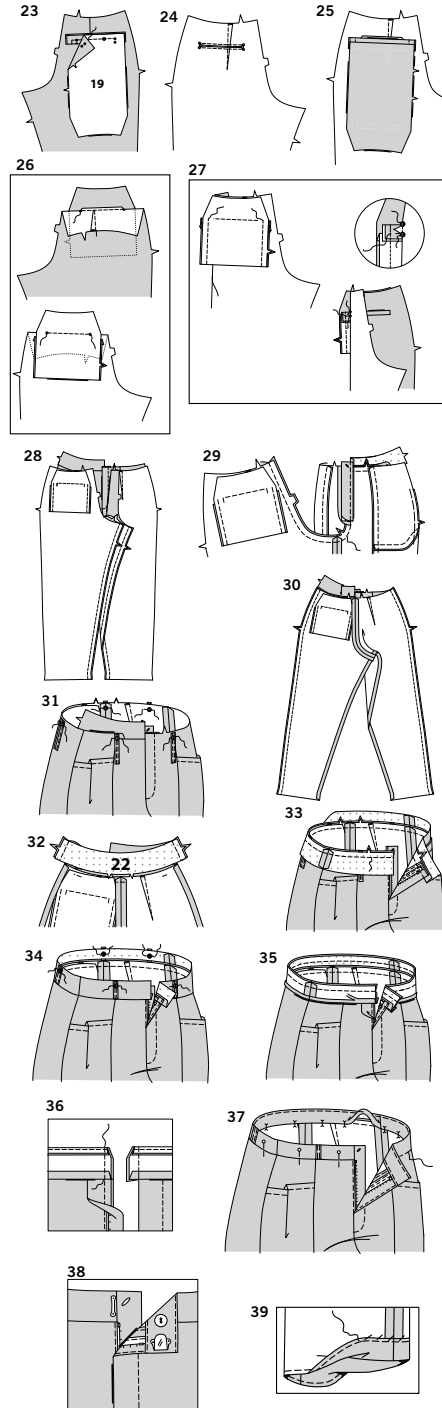
4 of 4

**FRONT AND ZIPPER**

5. Pin FRONT (11) to side front at side front edges. Stitch. Press seam toward front. **STAYSTITCH** upper edge 1/2" (1.3cm) from raw edge.
6. Pin (RIGHT) FRONT WAISTBAND (21) to upper edge of RIGHT front. Stitch from front edge to 1" (1.3cm) before large dot, back-stitching at ends to reinforce. Press seam toward waistband, pressing waistband out.
7. Stitch front sections together at center front between large dot and notch.
8. Turn in RIGHT front opening edge along foldline; press.
9. Place closed zipper (face up) under RIGHT front opening edge, having pressed edge close to zipper teeth and zipper stop at small dot. Using a zipper foot, baste close to pressed edge.
10. With RIGHT sides together, fold right fly along foldline. Stitch upper edge and lower edge. Trim. Turn. Press. Baste raw edges. Make buttonhole at marking.
11. On INSIDE, pin right fly to RIGHT front opening edge (over zipper), matching notches and small dots, having raw edges even. Baste along previous basting for zipper.
12. On OUTSIDE, using a zipper foot, stitch close to pressed edge of front through all layers.
13. Finish outer edge of left fly facing by stitching 1/4" (6mm) from raw edge and finishing with pinking, overcasting, overlock, or by turning in along stitching and stitching close to fold. Pin fly facing to LEFT front opening edge, matching notches and large dots. Stitch, ending at large dot. **TRIM SEAM. UNDERSTITCH** fly facing. Turn facing to INSIDE.
14. Lap LEFT front over RIGHT, matching centers. Baste close to edge through all thicknesses.
15. Pin right fly out of the way. Open out fly facing. Pin remaining zipper tape to fly facing, keeping LEFT front free. Using a zipper foot, stitch in place close to zipper teeth and along center of zipper tape.
16. Turn facing down. On OUTSIDE, stitch LEFT front along stitching line, keeping right fly free.
17. Turn right fly back in place. On INSIDE, hand tack fly and facing together at lower edge, as shown. Trim away excess zipper tape even with lower edge of fly, if needed.
18. If you prefer, on outside, machine-stitch a bar tack across lower end of fly through all thicknesses.

BACK

19. Make **FLAT DART** on BACK (17). Press toward center. **STAYSTITCH** upper edge 1/2" (1.3cm) from raw edge.
20. On outside, reinforce pocket opening on RIGHT back by stitching along stitching lines, squaring stitching at small dots.
21. Fold **WELT** (18) along foldline with **WRONG** sides together. Baste along seamlines.
22. On outside, pin welt to RIGHT back, placing basting line along lower stitching line, matching small and large dots. Baste between the small dots.



23. With **RIGHT** sides together, pin **BACK POCKET** (19) to **RIGHT** back (over welt), matching small and large dots. Stitch between the small dots, backstitching to reinforce.
24. Slash **RIGHT** back separately along slash line, clipping diagonally to small dots at corners. (Do not clip or trim welt or back pocket.)
25. Turn pocket and clipped corners to **INSIDE**; press.
26. Fold upper edge of back to **OUTSIDE** along upper stitching line. Fold back pocket up along fold line. Pin pocket to back along upper stitching line between the small dots, being careful not to catch in upper edge of welt. Stitch between the small dots, back-stitching at dots to reinforce the seam.
27. On **INSIDE**, stitch side edges of pocket together along seamlines catching in ends of welt. Stitch clipped corners of back to pocket between the small dots, securely.
28. Stitch front to back at inner leg edges.
29. Stitch center seam from upper back edge to front notch, back-stitching at notch to reinforce the seam.
30. Stitch front to back at side edges.

CARRIERS AND WAISTBAND

31. Make **CARRIERS** from **CARRIER** (20). Cut carrier into five 3-1/2" (9cm) long pieces. On **OUTSIDE**, baste carriers to upper edge of pants at large dots.
32. Stitch **FRONT WAISTBAND** (21) sections to **BACK WAISTBAND** (22) at side edges.
33. Open zipper. With **RIGHT** sides together, pin waistband to pants, matching seams and notches. Stitch seam connecting to previous stitching. **TRIM SEAM.** Press seam toward waistband, pressing waistband out.
34. On **OUTSIDE**, pin remaining ends of carriers to upper edge of waistband at large dots; baste.
35. Stitch waistband facing sections together at side edges. Press under notched edge a generous 5/8" (1.5cm) and trim to 1/4" (6mm). Turn right fly to **OUTSIDE**. On **OUTSIDE**, pin facing to upper edge of waistband with right sides together, matching centers and seams, being careful not to catch in upper edge of right fly. Stitch. **TRIM SEAM.**
36. **UNDERSTITCH** the facing. With right sides together, stitch facing to waistband at LEFT end in a 5/8" (1.5cm) seam and at RIGHT end in a 3/8" (1cm). Trim corners.
37. Turn facing to **INSIDE**; press. Pin pressed edge of facing over seam, placing pins on **OUTSIDE**. On **OUTSIDE**, **STITCH IN THE DITCH** of the seam, catching in pressed edge of facing on the **INSIDE**.
38. Sew bar of hook and bar closure to **OUTSIDE** end of **RIGHT** front waistband. Sew hook to end of **LEFT** front waistband facing. Sew button to **LEFT** front facing under right fly buttonhole.
39. Press up 1-1/4" (1.5cm) hem allowance on pant legs. Finish raw edge. **SLIP STITCH** in place.

FINISHING



Congrats!

You've completed your sewing adventure

SHARE YOUR LOOK



Post your pattern and tag us
@simplicity_creative_group and **#simplicitypatterns**
for a chance to be featured on our social media.

Look for more PDF patterns at [simplicity.com](https://www.simplicity.com)

Have a question or need help with your sewing project call us at
1-888-588-2700



Simplicity ©2023 a division of IG Design Group Americas Inc. • Atlanta, GA 30342 USA www.thedesigngroup.com • All Rights Reserved. www.simplicity.com • Made in the U.S.A. Fabriqué aux États-Unis.

To be used for individual private home use only and not for commercial or manufacturing purposes. • A usage privé seulement et non à des fins commerciales ou de production en série. • Para uso privado solamente, no se puede utilizar con propósitos de comercialización o de producción en serie.