

S9853

Simplicity



Easy

Facile

MISSES' COATS AND SCARF

Suggested Fabrics: A,B,C: Chenille Knit, Double Knits, Fleece, Melton, Novelty Knit Fabrics, Ponte, Sherpa, Wool Types. **D:** Jersey, Lightweight Novelty Knit Fabrics, Lightweight Velvet. **Interfacing:** Lightweight Fusible.

Notions: D: Four 4" - 5" (10cm - 13cm) tassels.

Sizes	XS (4-6)	S (8-10)	M (12-14)	L (16-18)	XL (20-22)
European	30-32	34-36	38-40	42-44	46-48

BODY MEASUREMENTS: Select pattern size based on body measurements

Bust	29½-30½	31½-32½	34-36	38-40	42-44	Ins.
Waist	22-23	24-25	26½-28	30-32	34-37	"
Hip-9" below waist	31½-32½	33½-34½	36-38	40-42	44-46	"
Back-neck to waist	15¼-15½	15¼-16	16¼-16½	16¼-17	17¼-17½	"

Coat A	60**	2	2	2½	2½	2½	Yds.
--------	------	---	---	----	----	----	------

Interfacing A,B	20"	¾	¾	1	1	1	Yd.
Coat B,C	60**	2½	2½	2½	2½	2½	Yds.

Interfacing C	20"	1¾	1¾	1¾	1½	1½	Yds.
---------------	-----	----	----	----	----	----	------

Scarf D	60**	1¾	1¾	1¾	1¾	1¾	Yds.
---------	------	----	----	----	----	----	------

FINISHED GARMENT MEASUREMENTS (Includes Design and Wearing Ease)

A,B,C Bust	48	50	53½	57½	61½	Ins.
A,B,C Waist	49½	51½	55	59	63	"

Width, lower edge						
Coat A,B,C	49	51	54½	58½	62½	Ins.

Finished back length from base of neck	Coat A	Coat B,C
Coat A	29½	30
Coat B,C	34½	35

*with nap **without nap

MANTEAUX ET ÉCHARPE POUR JEUNES FEMMES

Tissus Conseillés: A,B,C : Tricot en chenille, Tricotés doubles, Molleton, Melton, Tissus tricot fantaisie, Ponte, Sherpa, Sortes de laine. **D :** Jersey, Tissus tricot fantaisie légères, Velours léger. **Entoilage :** thermocollant léger.

Merceria: D : 4 glands de 10cm - 13cm.

Tailles	TP/XS	P/S	M/M	G/L	TG/XL
Françaises	32-34	36-38	40-42	44-46	48-50
Européen	30-32	34-36	38-40	42-44	46-48

MESURES DU CORPS: Choisissez la taille du patron basée sur les mesures du corps

Poitrine	75-77	80-83	87-92	97-102	107-112	cm
Taille	56-58	61-64	67-71	76-81	87-94	"
Hanches (23cm au-dessous de la taille)	80-83	85-88	92-97	102-107	112-117	cm
Dos du cou à la taille	39-39.5	40-40.5	41.5-42	42.5-43	44-44.5	"

Manteau A	150cm*	1.8	1.8	1.9	1.9	1.9	m
-----------	--------	-----	-----	-----	-----	-----	---

Entoilage A,B	51cm	0.8	0.8	0.8	0.9	0.9	m
Manteau B,C	150cm*	2.3	2.3	2.3	2.3	2.4	m

Entoilage C	51cm	1.3	1.3	1.3	1.4	1.4	m
-------------	------	-----	-----	-----	-----	-----	---

Écharpe D	150cm*	1.0	1.0	1.1	1.1	1.1	m
-----------	--------	-----	-----	-----	-----	-----	---

MESURES DES VÊTEMENTS FINI (Motif et aisance de port compris)

A,B,C Poitrine	122	127	136	146	156	cm
A,B,C Taille	125	131	140	150	160	"

Largeur à l'ourlet						
Manteau A,B,C	124	130	138	149	159	cm

Longueur finie - dos, votre nuque à l'ourlet	Manteau A	Manteau B,C
Manteau A	75	76
Manteau B,C	88	89

*avec sens **sans sens



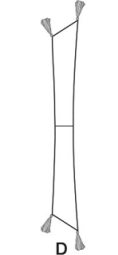
A



B



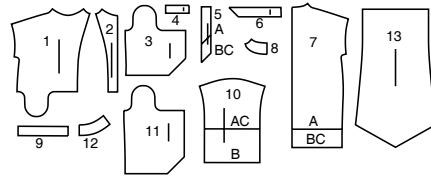
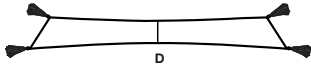
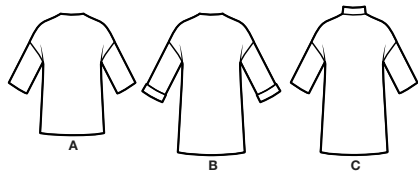
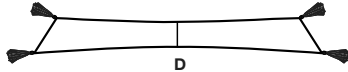
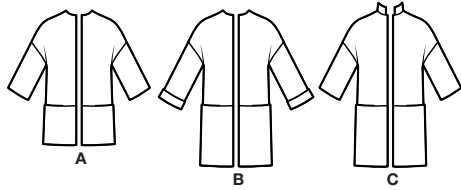
C



D

Simplicity®

Thank you for purchasing this Simplicity pattern. We made every effort to provide you with a high quality product.



- 1 Upper Front-A,B,C
- 2 Front Interfacing-A,B,C
- 3 Lower Front-A
- 4 Pocket Interfacing-A,B,C
- 5 Lower Front Interfacing-A,B,C
- 6 Front Hem Interfacing-A,B,C
- 7 Back-A,B,C
- 8 Back Facing-A,B,C
- 9 Back Hem Interfacing-A,B,C
- 10 Sleeve-A,B,C
- 11 Lower Front-B,C
- 12 Collar-C
- 13 Scarf-D

General Directions

The Pattern

- SYMBOLS**
- GRAIN LINE Place on straight grain of fabric parallel to selvage
 - PLACE SOLID LINE on fold of fabric.
 - CENTER FRONT OR BACK of garment.
 - NOTCHES
 - DOTS
 - CUTTING LINE
 - LENGTHEN OR SHORTEN LINES

SEAM ALLOWANCE: 5/8" (1.5cm) unless otherwise stated is included but not printed on MULTI-SIZE PATTERNS. Mark your size with colored felt tip pen. See chart on tissue for how to use MULTI-SIZE PATTERNS.

ADJUST IF NEEDED

Make adjustments before placing pattern on fabric.

TO LENGTHEN: Cut pattern between lengthen or shorten lines. Spread pattern evenly, the amount needed and tape to paper.

TO SHORTEN: At lengthen or shorten lines, make an even pleat taking up amount needed. Tape in place.

When lengthen or shorten lines are not given, make adjustments at lower edge of pattern.

Cutting/Marking

BEFORE CUTTING:

PRESS pattern pieces with a warm dry iron. PRE-SHRINK fabric by pre-washing washables or steam-pressing non-washables.

CIRCLE your cutting layout.

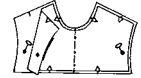
PIN pattern to fabric as shown in Cutting Layouts.

- FOR DOUBLE THICKNESS: Fold fabric with RIGHT sides together.
- FOR SINGLE THICKNESS: Place fabric RIGHT side up.
- FOR PILE, SHADED OR ONE WAY DESIGN FABRICS: Use "with nap" layouts

AFTER CUTTING:

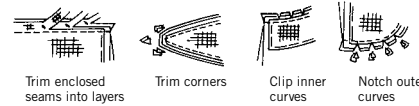
Transfer markings to WRONG side of fabric before removing pattern. Use pin and chalk method or dressmaker's tracing paper and wheel.

- To Quick Mark:**
- Snip edge of fabric to mark notches, ends of fold lines and center lines.
 - Pin mark dots.



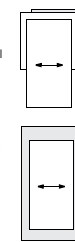
Sewing

- SEW garment following **Sewing Directions**.
- PIN or machine-baste seams matching notches.
- STITCH 5/8" (1.5 cm) seams unless otherwise stated.
- PRESS seams open unless otherwise indicated clipping when necessary so seams will lie flat.
- TRIM seams to reduce bulk, as shown below.



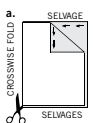
SPECIAL CUTTING NOTES

★ If layout shows a piece extending past fold, cut out all pieces except piece that extends.

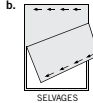


Open out fabric to single thickness. Cut extending piece on RIGHT side of fabric in position shown.

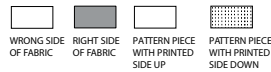
✱ Mark small arrows along both selvages indicating direction of nap or design. Fold fabric crosswise with RIGHT sides together, and cut along fold (a).



Turn one fabric layer around so arrows on both layers go in the same direction. Place RIGHT sides together (b).



Cutting Layouts

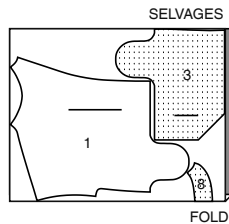
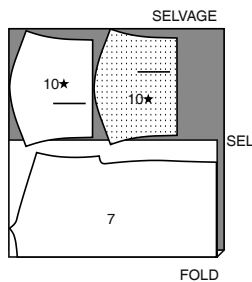


POSITION OF PATTERN PIECES MAY VARY SLIGHTLY ACCORDING TO YOUR PATTERN SIZE

COAT A

USE PIECES 1 3 7 8 10

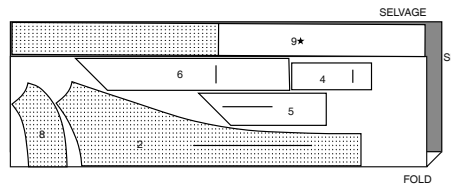
60" (150CM) WITH NAP
ALL SIZES



INTERFACING A

USE PIECES 2 4 5 6 8 9

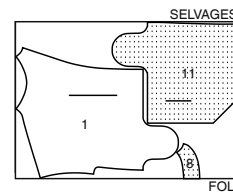
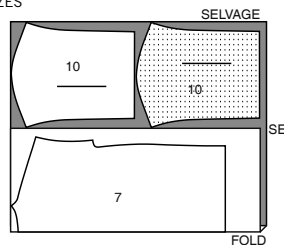
20" (51CM)
ALL SIZES



COAT B

USE PIECES 1 7 8 10 11

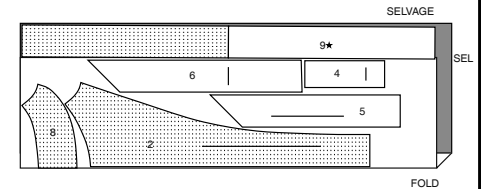
60" (150CM) WITH NAP
ALL SIZES



INTERFACING B

USE PIECES 2 4 5 6 8 9

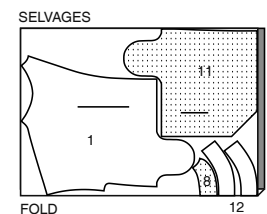
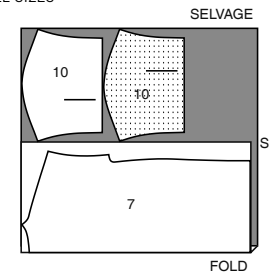
20" (51CM)
ALL SIZES



COAT C

USE PIECES 1 7 8 10 11 12

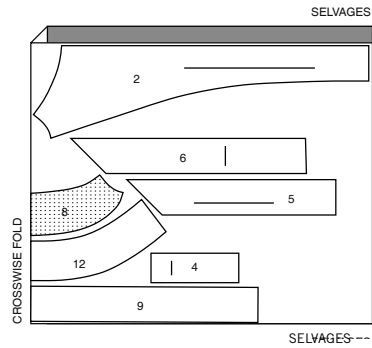
60" (150CM) WITH NAP
ALL SIZES



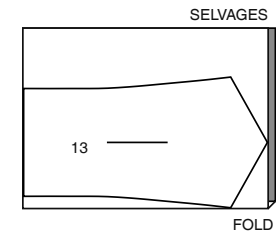
CUTTING LAYOUTS CONTINUED ON PAGE 2

INTERFACING C

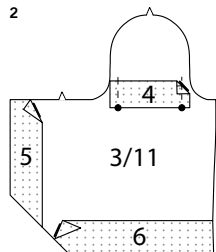
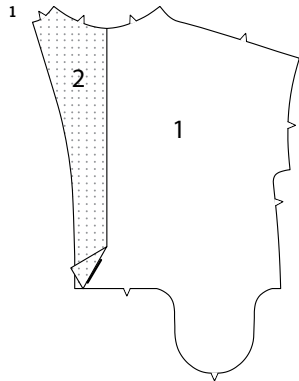
USE PIECES 2 4 5 6 8 9 12

20" (51CM)
ALL SIZES**SCARF D**

USE PIECE 13

60" (150CM)
WITH NAP
ALL SIZES

SEWING TUTORIALS

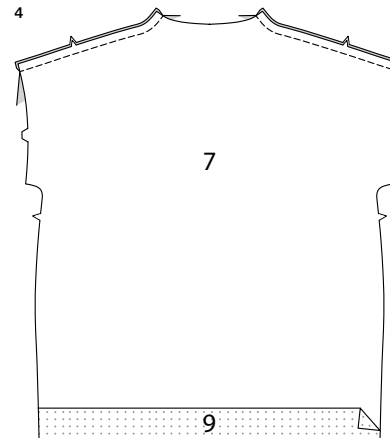
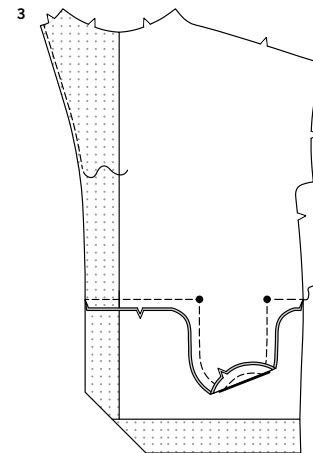
Build your skills viewing short, easy-to-follow videos at
simplicity.com/sewingtutorials**Sewing Directions**

FABRIC KEY RIGHT SIDE WRONG SIDE INTERFACING LINING LINING

Read **General Directions** on page 1 before you begin.Sewing methods in **BOLD TYPE** have Sewing Tutorial Video available.
Scan QR CODE to watch videos:**SLIPSTITCH** - see how to sew a slip stitch video.**STAYSTITCH** - see how to do stay-stitching video.**UNDERSTITCH** - see how to understitch video.**FINISH** - Stitch 1/4" (6mm) from raw edge and finish with one of the following: (1) Pink OR (2) Overcast OR (3) Turn in along stitching and stitch close to fold OR (4) Overlock.**OPTIONAL FOR HEMS:** Apply Seam Binding.**PATTERN PIECES WILL BE IDENTIFIED BY NUMBERS THE FIRST TIME THEY ARE USED.****STITCH SEAMS WITH RIGHT SIDES TOGETHER UNLESS OTHERWISE STATED.****COAT A, B, C****NOTE:** View A will be illustrated unless otherwise indicated.

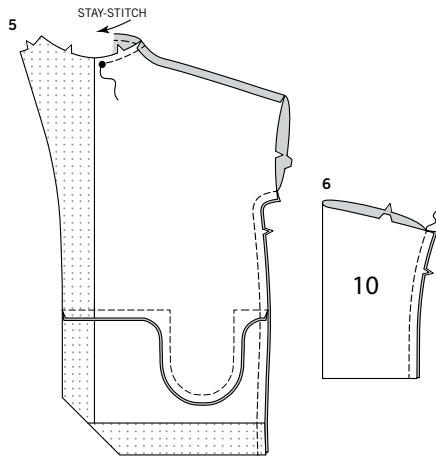
1. On **INSIDE**, pin front interfacing (2) to front (1) matching notches having raw edges even. Fuse in place following manufacturer's directions.

2. Pin lower front interfacing (5) to lower front (3 OR 11), having raw edges even. Fuse in place following manufacturer's directions. Fuse pocket interfacing (4) to upper edge of pocket, placing long edge at large dots, matching stitching lines. Fuse front hem interfacing (6) to lower edge of front, having raw edges even.



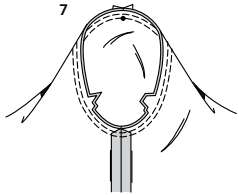
3. With **RIGHT** sides together, stitch lower front to upper front matching notches, stitching along stitching lines, pivoting at large dots. Continue stitching pocket edges together, as shown. Press pocket down, along fold line. **FINISH** front edge of self facing.

4. On **INSIDE**, pin back hem interfacing (9) to lower edge of back (7) having raw edges even. Fuse in place following manufacturer's directions. With **RIGHT** sides together, stitch front to back at shoulder seams.

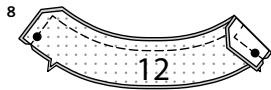


- 5. FOR WOVEN FABRICS- STAYSTITCH** neck edge to large dots.
FOR ALL FABRICS- Stitch front to back at side seams.

- 6.** With **RIGHT** sides together, stitch underarm seam of sleeve (10) sections.

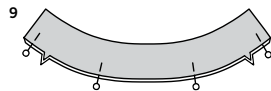


- 7.** Turn sleeve **RIGHT** side out.
Hold garment **WRONG** side out with armhole toward you. With **RIGHT** sides together, pin sleeve to armhole edge with center small dot at shoulder seam, matching underarm seams and notches.
Baste. Stitch. Stitch again 1/8" (3mm) from first stitching. Trim seam below notches close to stitching. Press only the seam allowance, shrinking out fullness.



COLLAR B

- 8.** Apply interfacing to **WRONG** side of one collar (12) section. Fuse in place following manufacturer's directions.
With **RIGHT** sides together, stitch collar sections together, leaving notched edge open. Trim seam, and corners.



- 9.** Turn collar **RIGHT** side out. Press. Pin.

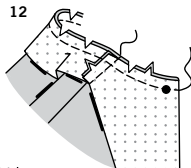


- 10.** On **OUTSIDE**, pin collar to neck edge matching notches and large dots, placing small dots at shoulder seams. Baste.

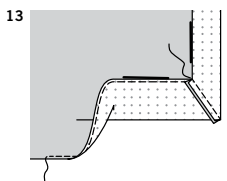
CONTINUE AS FOLLOWS FOR ALL VIEWS



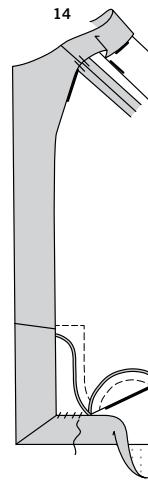
- 11.** Apply interfacing to **WRONG** side of back facing (8). Fuse in place following manufacturer's directions. **FINISH** lower edge of facing.



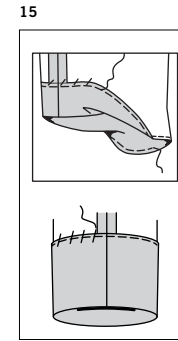
- 12.** Stitch ends of back facing to front facing matching notches.
Turn front edge of coat to **OUTSIDE**, along fold line.
Pin collar to neck edge matching notches and shoulder seams.
Stitch. Trim seam. Clip curves.



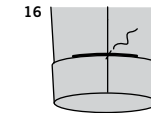
- 13. FINISH** lower edge of garment. To miter corners, bring lower front edges of coat together. Stitch in a 3/8" (1cm) seam.



- 14.** Turn facings to **INSIDE**. Press, pressing up hem on lower edge.
Hand-tack facing at shoulder seams. **SLIPSTITCH** hem in place, keeping pocket free.

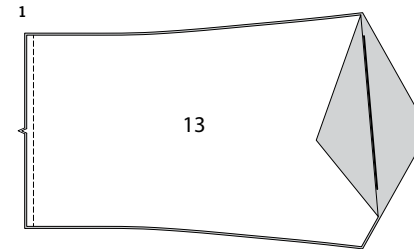


- 15. FINISH** lower edge of sleeve.
VIEW A, C- Press up hem on lower edge of sleeve. **SLIPSTITCH** hem in place.
VIEW D- Press lower edge of sleeve to **INSIDE** along fold line. **SLIPSTITCH** in place.

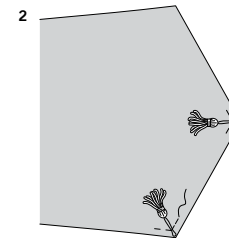


- 16.** Press up 2" (5cm) on lower edge of sleeve to **OUTSIDE**.
Hand-tack cuff at seam.

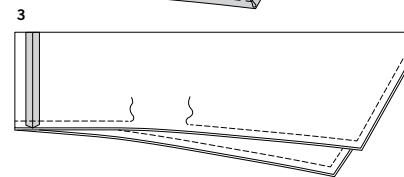
SCARF D



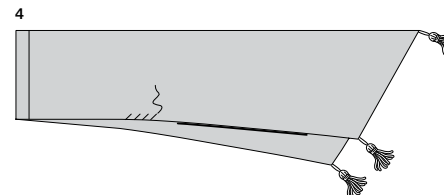
- 1.** With **RIGHT** sides together, stitch notched end of scarf (13).



- 2.** On each side of scarf, pin tassels to center point and one corner, as shown. Baste.



- 3.** Fold scarf in half lengthwise with **WRONG** sides together. Stitch outer edge, leaving an opening large enough for turning, keeping loose ends of tassels free.



- 4.** Turn scarf **RIGHT** side out. Press.
SLIPSTITCH opening closed.



Congrats!

You've completed your sewing adventure

**SHARE
YOUR** LOOK



Post your pattern and tag us
@simplicity_creative_group and **#simplicitypatterns**
for a chance to be featured on our social media.

Look for more PDF patterns at [simplicity.com](https://www.simplicity.com)

Have a question or need help with your sewing project call us at
1-888-588-2700



Simplicity ©2023 a division of IG Design Group Americas Inc. • Atlanta, GA 30342 USA www.thedesigngroup.com • All Rights Reserved. www.simplicity.com • Made in the U.S.A. Fabriqué aux États-Unis.

To be used for individual private home use only and not for commercial or manufacturing purposes. • A usage privé seulement et non à des fins commerciales ou de production en série. • Para uso privado solamente, no se puede utilizar con propósitos de comercialización o de producción en serie.