

S9852

**Simplicity**



Designed and printed in USA.



Average

**MISSES' PANTS AND BELT**

**Suggested Fabrics:** Chino, Cotton Blends, Lightweight Denim, Linen Blends, Stretch Wovens, Twill. **Lining:** Cotton Blends, Polyester Blends. **Interfacing:** Lightweight Fusible.

**Notions:** **A, B, C:** 7" (18cm) zipper (adjust to fit), 3/4 yd. (0.7m) of 1" (2.5cm) elastic, one hook and bar. **Also for A:** Five 5/8" (1.5cm) buttons, 1 1/2 yd. (1.4m) of 3/8" - 1/2" (1cm - 1.3cm) twill tape (for ties). **Also for B:** Nine 5/8" (1.5cm) buttons. **Also for C:** Five 5/8" (1.5cm) buttons. **D:** One belt buckle with 1 1/4" (3cm) opening.

Sizes	8	10	12	14	16	18	20	22	24	26
European	34	36	38	40	42	44	46	48	50	52

**BODY MEASUREMENTS: Select pattern size based on body measurements**

Bust	31 1/2	32 1/2	34	36	38	40	42	44	46	48	Ins.
Waist	24	25	26 1/2	28	30	32	34	37	39	41 1/2	"
Hip-9" below waist	33 1/2	34 1/2	36	38	40	42	44	46	48	50	"
Back-neck to waist	15 1/4	16	16 1/4	16 1/2	16 3/4	17	17 1/4	17 1/2	17 3/4	17 3/4	"

Lining A,B,C	45*** - 5/8 yd.											
Pants A	45**	2%	2%	2%	2%	2%	2%	2%	2%	2%	2%	Yds.
	60**	2	2	2	2	2	2	2%	2%	2%	2%	"

Interfacing A,B	20" - 3/4 yd.										
Pants B	45**	2 1/4	2 1/4	2 3/4	2 3/4	2 3/4	2 3/4	2 1/2	2 1/2	2 1/2	Yds.
	60**	1 3/4	1 3/4	1 1/2	1 1/2	1 1/2	1 1/2	2%	2%	2 1/2	"

Pants C	45**	2%	2%	2%	2 1/2	2 1/2	2 1/2	2 1/2	2 1/2	2 1/2	Yds.
	60**	1 3/4	1 3/4	1%	2%	2%	2%	2%	2 1/4	2 1/4	"
Interfacing	20"	1/2	1/2	1/2	1/2	1/2	1/2	3/4	3/4	3/4	"

Belt D	45**	1%	1 1/4	1 1/4	1 1/4	1 1/4	1 1/4	1%	1%	1%	Yds.
Interfacing	20"	1%	1 1/4	1 1/4	1 1/4	1 1/4	1%	1%	1%	1%	"

**FINISHED GARMENT MEASUREMENTS (Includes Design and Wearing Ease)**

A,B,C Waist	31	32	33 1/2	35 1/2	37 1/2	39 1/2	41 1/2	43 1/2	45 1/2	47 1/2	Ins.
A,B,C Hip	35 1/2	36 3/4	38	40	42	44	46	48	50	52	"
Width, each leg											
Pants A,B,C	18%	19	19%	20%	20%	21%	22%	22%	23%	24	Ins.
Finished side length from waist											
Pants A,B	39%	40	40%	40%	40%	41	41 1/4	41 1/4	41 3/4	42	Ins.
Pants C	35%	36	36 1/4	36 1/4	36 3/4	37	37 1/4	37 1/2	37 3/4	38	"

\*with nap \*\*without nap

Moins Facile

**PANTALONS ET CEINTURE POUR JEUNES FEMMES**

**Tissus Conseillés:** Chino, Cotonnades, Denim léger, Lin mélangés, Tissus tissés extensibles, Twill. **Doublure:** Cotonnades, Mélanges de polyester. **Entoilage:** Thermocollant léger

**Mercurie:** **A, B, C:** 1 fermeture à glissière de 18cm (adaptez pour ajuster), 0.7m d'élastique de 2.5cm, 1 crochet. **Aussi pour A:** 5 boutons de 1.5cm, 1.4m de ruban ou de talonnette de coton de 1cm - 1.3cm (pour attaches). **Aussi pour B:** 9 boutons de 1.5cm. **Aussi pour C:** 5 boutons de 1.5cm. **D:** 1 boucle de ceinture avec ouverture de 3cm.

Tailles	8	10	12	14	16	18	20	22	24	26
Françaises	36	38	40	42	44	46	48	50	52	54
Européen	34	36	38	40	42	44	46	48	50	52

**MESURES DU CORPS: Choisissez la taille du patron basée sur les mesures du corps**

Poitrine	80	83	87	92	97	102	107	112	117	122	cm
Taille	61	64	67	71	76	81	87	94	99	106	"
Hanches (23cm au-dessous de la taille)											
	85	88	92	97	102	107	112	117	122	127	cm
Dos du cou à la taille	40	40.5	41.5	42	42.5	43	44	44	44.5	44.5	"

Doublure A,B,C	115cm - 0.5m										
Pantalon A	115cm*	2.4	2.4	2.4	2.4	2.5	2.7	2.9	2.9	2.9	m
	150cm*	1.8	1.8	1.8	1.8	1.8	1.8	2.2	2.2	2.4	2.5

Entoilage A,B	51cm - 0.7m										
Pantalon B	115cm*	2.1	2.2	2.5	2.5	2.5	2.5	2.5	2.6	2.6	m
	150cm*	1.6	1.6	1.6	1.7	2.1	2.1	2.2	2.2	2.3	2.5

Pantalon C	115cm*	2.2	2.2	2.3	2.3	2.3	2.3	2.4	2.6	2.6	m
	150cm*	1.5	1.5	1.7	1.8	1.8	1.9	1.9	1.9	2.1	2.3
Entoilage	51cm	0.5	0.5	0.5	0.5	0.5	0.5	0.5	0.6	0.6	"

Ceinture D	115cm*	1.0	1.0	1.1	1.1	1.1	1.1	1.3	1.3	1.3	m
Entoilage	51cm	1.0	1.0	1.1	1.1	1.1	1.1	1.3	1.3	1.3	"

**MESURES DES VÊTEMENTS FINI (Motif et aisance de port compris)**

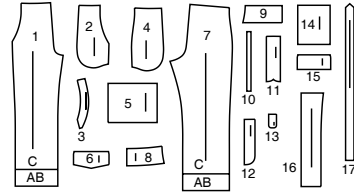
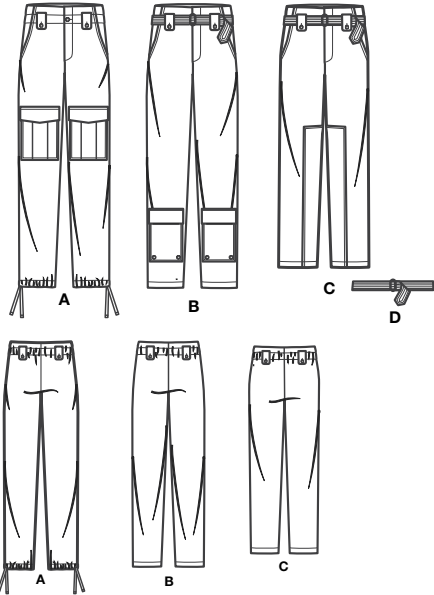
A,B,C Taille	79	81	85	90	95	100	105	110	116	121	cm
A,B,C Hanches	90	93	97	102	107	112	117	122	127	132	"
Largeur, chaque jambe											
Pantalon A,B,C	47	48	50	51	53	55	56	58	59	61	cm
Longueur finie - côté, taille à l'ourlet											
Pantalon A,B	101	102	102	103	104	104	105	105	106	107	cm
Pantalon C	91	91	92	93	93	94	95	95	96	97	"

\*avec sens \*\*sans sens



# Simplicity

Thank you for purchasing this Simplicity pattern. We made every effort to provide you with a high quality product.



- 1 Front-A,B,C
- 2 Pocket Facing-A,B,C
- 3 Pocket Interfacing-A,B,C
- 4 Side Front and Pocket-A,B,C
- 5 Pocket-A
- 6 Flap-A
- 7 Back-A,B,C
- 8 Front Facing-A,B,C
- 9 Back Facing-A,B,C
- 10 Guide for Elastic-A,B,C
- 11 Underlap-A,B,C
- 12 Fly Facing-A,B,C
- 13 Loop-A,B,C
- 14 Pocket-B
- 15 Flap-B
- 16 Patch-C
- 17 Belt-D

## General Directions

### The Pattern

- SYMBOLS**
- ↔ GRAIN LINE Place on straight grain of fabric parallel to selvage
  - ⇄ PLACE SOLID LINE on fold of fabric.
  - CENTER FRONT OR BACK OF GARMENT.
  - ∇ NOTCHES
  - ○ DOTS
  - CUTTING LINE
  - == LENGTHEN OR SHORTEN LINES

SEAM ALLOWANCE: 5/8" (1.5cm) unless otherwise stated is included but not printed on MULTI-SIZE PATTERNS. Mark your size with colored felt tip pen. See chart on tissue for how to use MULTI-SIZE PATTERNS.

**ADJUST IF NEEDED**  
Make adjustments before placing pattern on fabric.

**TO LENGTHEN:**  
Cut pattern between lengthen or shorten lines. Spread pattern evenly, the amount needed and tape to paper.

**TO SHORTEN:**  
At lengthen or shorten lines, make an even pleat taking up amount needed. Tape in place.

When lengthen or shorten lines are not given, make adjustments at lower edge of pattern.

### Cutting/Marking

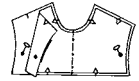
**BEFORE CUTTING:**  
PRESS pattern pieces with a warm dry iron. PRE-SHRINK fabric by pre-washing washables or steam-pressing non-washables.

CIRCLE your cutting layout.  
PIN pattern to fabric as shown in Cutting Layouts.

- FOR DOUBLE THICKNESS: Fold fabric with RIGHT sides together.
- FOR SINGLE THICKNESS: Place fabric RIGHT side up.
- FOR PILE, SHADED OR ONE WAY DESIGN FABRICS: Use "with nap" layouts

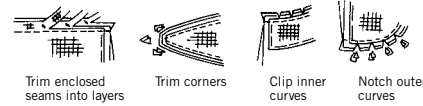
**AFTER CUTTING:**  
Transfer markings to WRONG side of fabric before removing pattern. Use pin and chalk method or dressmaker's tracing paper and wheel.

- To Quick Mark:**
- Snip edge of fabric to mark notches, ends of fold lines and center lines.
  - Pin mark dots.



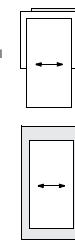
### Sewing

- SEW garment following **Sewing Directions**.
- PIN or machine-baste seams matching notches.
- STITCH 5/8" (1.5 cm) seams unless otherwise stated.
- PRESS seams open unless otherwise indicated clipping when necessary so seams will lie flat.
- TRIM seams to reduce bulk, as shown below.

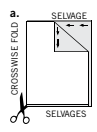


### SPECIAL CUTTING NOTES

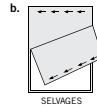
★ If layout shows a piece extending past fold, cut out all pieces except piece that extends.



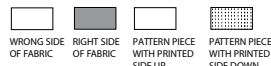
✱ Mark small arrows along both selvages indicating direction of nap or design. Fold fabric crosswise with RIGHT sides together, and cut along fold (a).



Turn one fabric layer around so arrows on both layers go in the same direction. Place RIGHT sides together (b).



## Cutting Layouts

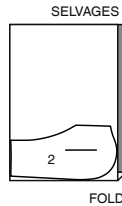


POSITION OF PATTERN PIECES MAY VARY SLIGHTLY ACCORDING TO YOUR PATTERN SIZE

### LINING A,B,C

USE PIECE 2

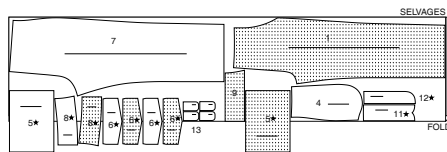
45" (115CM) WITHOUT NAP  
ALL SIZES



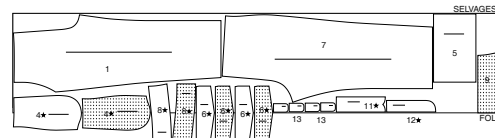
### PANTS A

USE PIECES 1 4 5 6 7 8 9 11 12 13

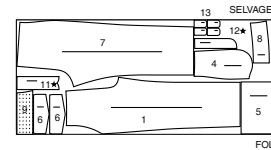
45" (115CM) WITH NAP  
SIZES 8 10 12 14 16



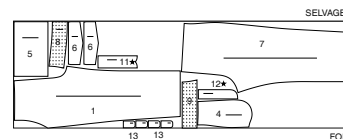
45" (115CM) WITH NAP  
SIZES 18 20 22 24 26



60" (150CM) WITH NAP  
SIZES 8 10 12 14 16 18



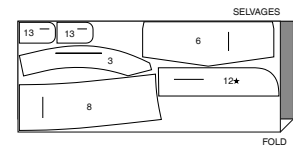
60" (150CM) WITH NAP  
SIZES 20 22 24 26



### INTERFACING A

USE PIECES 3 6 8 12 13

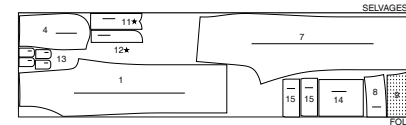
20" (51CM)  
ALL SIZES



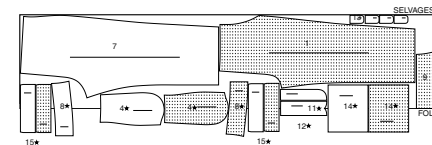
### PANTS B

USE PIECES 1 4 7 8 9 11 12 13 14 15

45" (115CM) WITH NAP  
SIZES 8 10



45" (115CM) WITH NAP  
SIZES 12 14 16 18 20 22 24 26

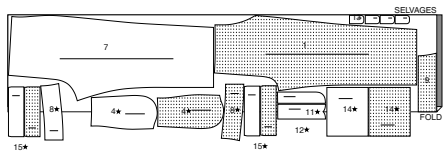


CUTTING LAYOUTS CONTINUED ON PAGE 2

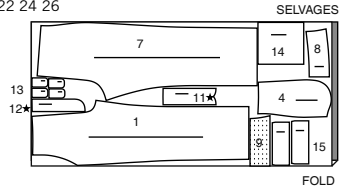
# S9852

2 of 4

60" (150CM) WITH NAP  
SIZES 8 10 12 14



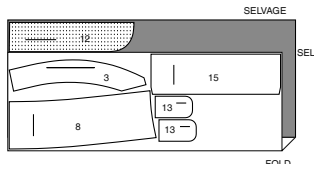
60" (150CM)  
WITH NAP  
SIZES 16 18 20 22 24 26



## INTERFACING B

USE PIECES 3 8 12 13 15

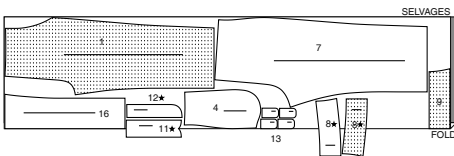
20" (51CM)  
ALL SIZES



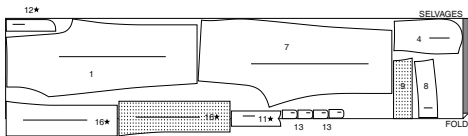
## PANTS C

USE PIECES 1 4 7 8 9 11 12 13 16

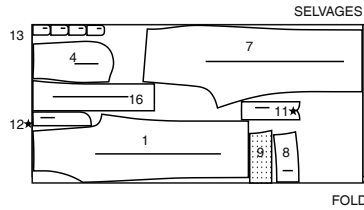
45" (115CM) WITH NAP  
SIZES 8 10 12 14 16 18 20



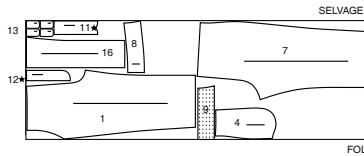
45" (115CM) WITH NAP  
SIZES 22 24 26



60" (150CM)  
WITH NAP  
SIZES 8 10 12



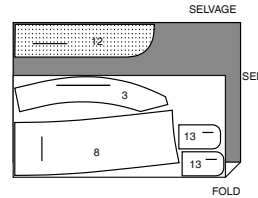
60" (115CM) WITH NAP  
SIZES 14 16 18 20 22 24 26



## INTERFACING C

USE PIECES 3 8 12 13

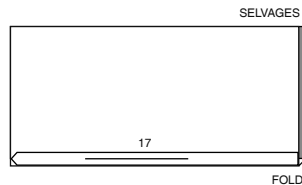
20" (51CM)  
ALL SIZES



## BELT D

USE PIECE 17

45" 60" (115CM/150CM)  
WITH NAP  
ALL SIZES



## INTERFACING D

USE PIECE 17

20" (51CM)  
ALL SIZES



## SEWING TUTORIALS



Build your skills viewing short, easy-to-follow videos at [simplicity.com/sewingtutorials](http://simplicity.com/sewingtutorials)

## Sewing Directions



Sewing methods in **BOLD TYPE** have Sewing Tutorial Video available. Scan QR CODE to watch videos:

**EDGESTITCH** - see Machine Stitches: "how to edgestitch" video.

**REINFORCE** - see Machine Stitches: "how to reinforce" video.

**STITCH IN THE DITCH** - see Machine Stitches: "how to stitch in the ditch" video.

**TOPSTITCH** - see Machine Stitches: "how to topstitch" video.

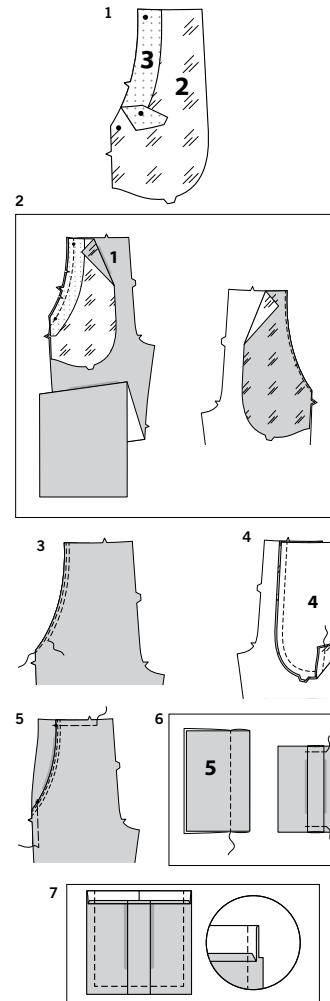
**UNDERSTITCH** - see Machine Stitches: "how to understitch" video.

**FINISH** - see Seams: "how to finish seam allowances" video.

**SLIPSTITCH** - Slide needle through a folded edge, then pick up a thread of underneath fabric.

## PANTS A, B, C

### FRONT AND BACK



**1.** Pin pocket interfacing (3) to **WRONG** side of pocket facing (2), matching notches and small dots. Fuse interfacing in place following manufacturer's directions.

**2.** With **RIGHT** sides together, pin pocket facing to upper side edge of front (1), matching notches and small dots. Stitch. Trim seam. **UNDERSTITCH** pocket.

**3.** Turn pocket to inside. Press. **TOPSTITCH** and **EDGESTITCH** pocket seam.

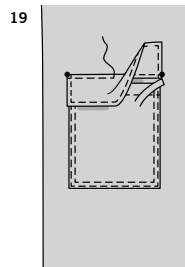
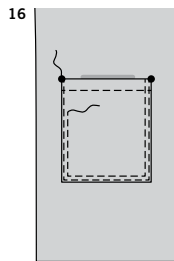
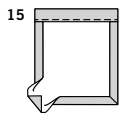
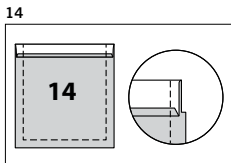
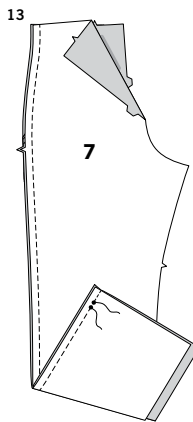
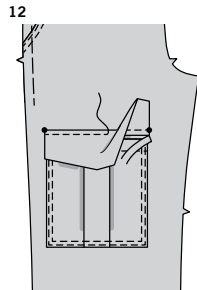
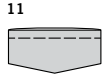
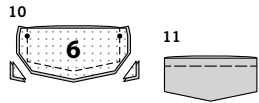
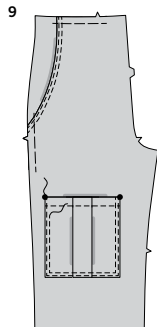
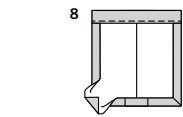
**4.** Open out pocket. With **RIGHT** sides together, pin side front and pocket (4) to pocket facing. Stitch outer double notched edges together.

**5.** Turn in pocket, matching small dots and stitching lines. Baste upper and side edges.

### FOR VIEW A

**6.** To make pleat in pocket (5), on **OUTSIDE**, bring broken lines together; stitch along broken line. Center pleat; press. Baste upper and lower edges.

**7.** Press under 1/4" (6mm) on upper edge of pocket. Turn upper edge to **OUTSIDE** along fold line, forming facing. Stitch along seam line on raw edges. Trim seam allowance in the facing area to 1/4" (6mm).



**8.** Turn corners **RIGHT** side out, turning facing to the **WRONG** side; press, pressing under raw edges along stitching. Stitch facing close to inner pressed edge.

**9.** On **OUTSIDE**, pin pocket to front, matching large dots. **EDGESTITCH** and **TOPSTITCH** side and lower edges.

**10.** Apply interfacing to flap (6) sections. For each side, with **RIGHT** sides together, pin one interfaced and one uninterfaced flap section together. Stitch, leaving upper edge open. Trim seam.

**11.** Turn **RIGHT** side out. Press. Baste raw edges.

**12.** On **OUTSIDE**, pin flap to front, with raw edges toward lower edge, placing seamline along flap line, matching small dots. Stitch along seam line. Trim seam, being careful not to cut through front. Turn flap down. Press. **TOPSTITCH** flap seam.

**13.** Stitch back (7) to front at sides, leaving open between lower small dots, as shown.

#### FOR VIEW B

**14.** Press under 1/4" (6mm) on upper edge of pocket (14). Turn upper edge to **OUTSIDE** along fold line, forming facing. Stitch along seam line on raw edges. Trim seam allowance in the facing area to 1/4" (6mm).

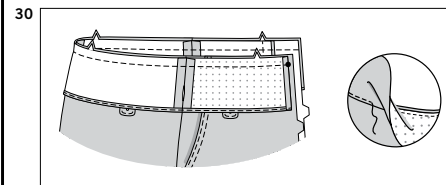
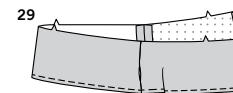
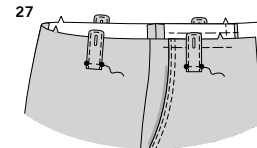
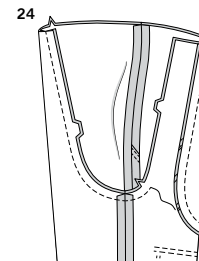
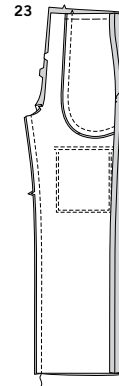
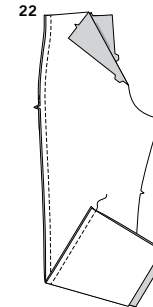
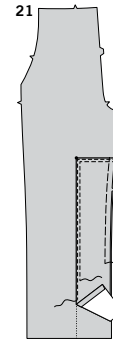
**15.** Turn corners **RIGHT** side out, turning facing to the **WRONG** side; press, pressing under raw edges along stitching. Stitch facing close to inner pressed edge.

**16.** On **OUTSIDE**, pin pocket to front, matching large dots. **EDGESTITCH** and **TOPSTITCH** side and lower edges.

**17.** Apply interfacing to flap (15) sections. For each side, with **RIGHT** sides together, pin one interfaced and one uninterfaced flap section together. Stitch, leaving upper edge open. Trim seam.

**18.** Turn **RIGHT** side out. Press. Baste raw edges. **TOPSTITCH** finished edges.

**19.** On **OUTSIDE**, pin flap to front, with raw edges toward lower edge, placing seamline along flap line, matching small dots. Stitch along seam line. Trim seam, being careful not to cut through front. Turn flap down. Press. **TOPSTITCH** flap seam.



#### FOR VIEW C

**20.** Press under seam allowances on upper and long unnotched edge of patch (16).

**21.** With **RIGHT** sides up, pin patch to inner leg edge of front, matching notches and small dots, as shown, having lower edges even. **EDGESTITCH** and **TOPSTITCH** pressed edges. Baste raw edges.

#### FOR VIEWS B, C

**22.** Stitch back to front at sides.

#### FOR ALL VIEWS

**23.** Stitch back to front at inner leg seam.

**24.** With **RIGHT** sides together, insert one leg **INSIDE** the other. With **RIGHT** sides together, pin center seam, matching inner leg seams and notches. Stitch to notch on front. **REINFORCE** seam.

#### LOOPS, FACING AND FLY

**25.** Apply interfacing to loop (13) sections. For each loop, with **RIGHT** sides together, pin one interfaced and one uninterfaced loop section together. Stitch in a 3/8" (1cm) seam, leaving upper edge open. Trim seam.

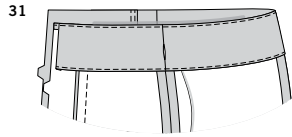
**26.** Turn **RIGHT** side out. Press. Baste raw edges. **EDGESTITCH** finished edges. Make buttonhole in loop at marking.

**27.** On **OUTSIDE**, pin loops to front and back, with raw edges toward lower edge, matching small dots. Baste along seam line.

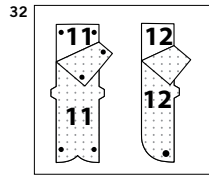
**28.** Apply interfacing to front facing (8) sections. Stitch front facing sections to back facing (9) at sides, leaving open between small dots.

**29.** **FINISH** lower unnotched edge. Turn in **RIGHT** front opening edge along foldline; press.

**30.** With **RIGHT** sides together, pin facing to upper edge of pants, matching centers and seams. Stitch. Trim seam. **UNDERSTITCH** facing.

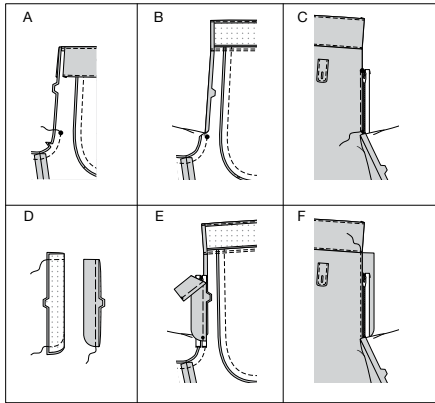


**31.** Turn facing to **INSIDE**. Press. Baste left front opening edge.



**32.** Apply interfacing to underlap (11) and fly facing (12).

33



**33.** Construct fly front as follows:

**A-** Stitch front sections together at center front between large dot and notch, connecting with previous stitching.

**B-** Open out right front facing. Turn in right front opening edge along foldline; press.

**C-** Place closed zipper (face up) under right front opening edge, having pressed edge close to zipper teeth, placing upper zipper stop at large dot and lower zipper stop at small dot. Using a zipper foot, baste close to pressed edge.

**D-** With right sides together, fold underlap (11) along foldline. Stitch upper and lower edges, as shown. Trim. Turn. Press. Baste raw edges.

**E-** On inside, pin underlap to right front opening edge (over zipper), matching notches and small dots, having raw edges even. Baste along previous basting for zipper.

**F-** On outside, using a zipper foot, stitch close to pressed edge of front through all layers.

**G- EDGE FINISH** outer edge of fly facing (12). Press under seam allowance on upper edge of fly facing. Trim pressed seam allowance to 3/8" (1cm). Pin fly facing to left front opening edge, matching notches, and large dots. Stitch, ending at large dot. Trim. **UNDER-STITCH** fly facing. Turn facing to inside.

**H-** Lap left front over right, matching centers. Baste close to edge through all thicknesses.

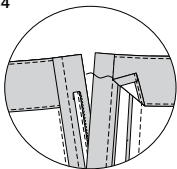
**I-** Pin underlap out of the way. Open out fly facing. Pin remaining zipper tape to fly facing, keeping left front free. Using a zipper foot, stitch in place close to zipper teeth and along center of zipper tape.

**J-** Turn fly facing down. **SLIPSTITCH** upper pressed edge to facing. On outside, stitch left front along stitching line, keeping underlap free.

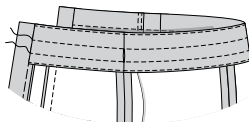
**K-** Turn underlap back in place. On inside, hand tack fly and underlap together at lower edge, as shown. Trim away excess zipper tape even with lower edge of fly, if needed.

**L-** If desired, on outside, machine-stitch a bar tack across lower end of fly through all thicknesses.

34



35

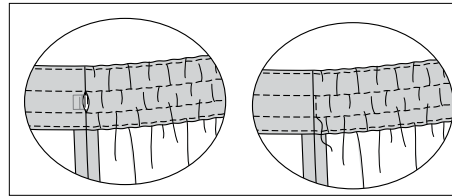


**34.** Turn in right front facing. **SLIPSTITCH** pressed edge over seam, as shown.

### FINISHING

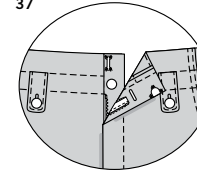
**35.** To form back casing for elastic, stitch pants along stitching lines.

36



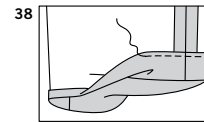
**36.** Cut elastic the length of guide for elastic (10). Insert elastic through opening, extending ends 5/8" (1.5cm) past side seams. Baste. To hold elastic in place, stitch close to opening edge, through all thicknesses.

37



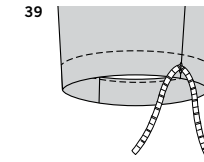
**37.** Make buttonhole in left front at marking. Sew buttons to pants and underlap, at small dots. Sew hook and bar to upper front opening edges, as shown.

### FOR VIEW A, C



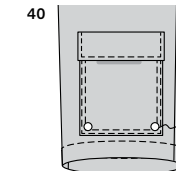
**38.** Turn up 1 1/4" (3.2cm) hem on lower edge of pants. Turn 1/4" (6mm) on raw edge of hem to wrong side; press. Stitch close to inner edge of hem, forming a casing for View A.

### FOR VIEW A



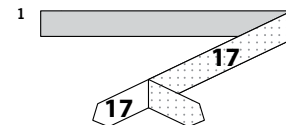
**39.** Cut two pieces of twill tape, each approximately 24" (61cm) long. Insert twill tape through openings, extending ends evenly.

### FOR VIEW B

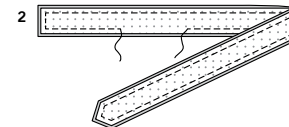


**40.** Sew buttons to pockets at small dots.

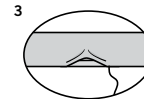
## BELT D



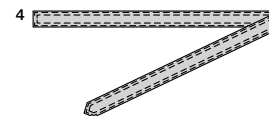
**1.** Apply interfacing to belt (17) sections.



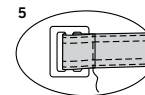
**2.** With **RIGHT** sides together, pin belt sections together. Stitch outer edges in a 3/8" (1cm) seam, leaving an opening for turning.



**3.** Turn **RIGHT** side out. Press. **SLIPSTITCH** opening.



**4.** **TOPSTITCH** belt, as shown. Stitch again 1/4" (6mm) away from previous stitching, as shown.



**5.** Slip straight edge of belt through bar of buckle, turning in belt along foldline. Stitch close to edge, through all thicknesses.



# Congrats!

You've completed your sewing adventure

---

**SHARE  
YOUR** LOOK



Post your pattern and tag us  
**@simplicity\_creative\_group** and **#simplicitypatterns**  
for a chance to be featured on our social media.

Look for more PDF patterns at [simplicity.com](https://www.simplicity.com)

Have a question or need help with your sewing project call us at  
1-888-588-2700



Simplicity ©2023 a division of IG Design Group Americas Inc. • Atlanta, GA 30342 USA [www.thedesigngroup.com](https://www.thedesigngroup.com) • All Rights Reserved. [www.simplicity.com](https://www.simplicity.com) • Made in the U.S.A. Fabriqué aux États-Unis.

To be used for individual private home use only and not for commercial or manufacturing purposes. • A usage privé seulement et non à des fins commerciales ou de production en série. • Para uso privado solamente, no se puede utilizar con propósitos de comercialización o de producción en serie.