

S9851

**Simplicity**



A



B



C



B



												Average					Moins Facile												
<b>MISSES' AND WOMEN'S TOPS</b>												<b>HAUTS POUR JEUNES FEMMES ET FEMMES</b>																	
Suggested Fabrics: Crepe Back Satin, Crepe de Chine, Double Georgette, Silky Types. Interfacing: Lightweight Fusible.												Tissus Conseillés: Crêpe satin, Crêpe de chine, Crêpe georgette double, Sortes de soie. Entoilage : thermocollant léger.																	
Notions: A: One pkg. of ½" (1.3cm) single fold bias tape. B,C: Elastic cord button loops. Also for B: Two ¾" (1cm) buttons. Also for C: Three ¾" (1cm) buttons.												Mercerie: A : 1 paquet de ruban de biais simple de 1.3cm. B,C: Galon à brides élastiques. Aussi pour B: 2 boutons de 1cm. Aussi pour C: 3 boutons de 1cm.																	
<b>MISSES' SIZES</b>		10	12	14	16	18						<b>TAILLES (J. FEMMES)</b>		10	12	14	16	18											
<b>EUROPEAN</b>		36	38	40	42	44						<b>FRANÇAISES</b>		38	40	42	44	46											
												<b>EUROPÉEN</b>		36	38	40	42	44											
<b>BODY MEASUREMENTS: Select pattern size based on body measurements</b>												<b>MESURES DU CORPS: Choisissez la taille du patron basée sur les mesures du corps</b>																	
Bust		32½	34	36	38	40	Ins.	Poitrine	83	87	92	97	102	cm															
Waist		25	26½	28	30	32	"	Taille	64	67	71	76	81	"															
Hip-9" below waist		34½	36	38	40	42	"	Hanches (23cm au-dessous de la taille)	88	92	97	102	107	cm															
Back-neck to waist		16	16¼	16½	16¾	17	"	Dos du cou à la taille	40.5	41.5	42	42.5	43	"															
Top A	60**	1½					Yds.	Haut A	150cm*	1.3	1.4	1.4	1.5	m															
Interfacing	20"- ¾ yd.							Entoilage	51cm- 0.7m																				
Top B	60**	1½				2	Yds.	Haut B	150cm*	1.7	1.7	1.7	1.8	m															
Interfacing	20"- 1½ yds.							Entoilage	51cm- 1.0m																				
Top C	60**	1¼				1½	Yds.	Haut C	150cm*	1.1	1.1	1.1	1.3	m															
Interfacing	20"- 1¼ yds.							Entoilage	51cm- 1.1m																				
<b>WOMEN'S SIZES</b>		20W	22W	24W	26W	28W	30W	32W	34W	36W	38W						<b>TAILLES (FEMMES)</b>		20W	22W	24W	26W	28W	30W	32W	34W	36W	38W	
<b>EUROPEAN</b>		46	48	50	52	54	56	58	60	62	64						<b>FRANÇAISES</b>		48	50	52	54	56	58	60	62	64	66	
																	<b>EUROPÉEN</b>		46	48	50	52	54	56	58	60	62	64	
<b>BODY MEASUREMENTS: Select pattern size based on body measurements</b>												<b>MESURES DU CORPS: Choisissez la taille du patron basée sur les mesures du corps</b>																	
Bust		42	44	46	48	50	52	54	56	58	60	Ins.	Poitrine	107	112	117	122	127	132	137	142	147	152	cm					
Waist		35	37	39	41½	44	46½	49	51½	53	54½	"	Taille	89	94	99	105	112	118	124	130	134	138	"					
Hip-9" below waist		44	46	48	50	52	54	56	58	60	62	"	Hanches (23cm au-dessous de la taille)	112	117	122	127	132	137	142	147	152	157	cm					
Back-neck to waist		17¼	17½	17¾	18	18½	18¾	19	19½	19¾	20	"	Dos du cou à la taille	44	44	44.5	45	45	45.5	46	46	46.5	47	"					
Top A	60**	1¾	1½	1½	1½	2	2	2	2¼	2½	2½	Yds.	Haut A	150cm*	1.6	1.7	1.7	1.7	1.7	1.8	1.8	1.9	1.9	m					
Interfacing	20"- 1 yd.												Entoilage	51cm- 0.8m															
Top B	60**	2	2	2¼	2¼	2½	2½	2½	2½	2½	2½	Yds.	Haut B	150cm*	1.8	1.8	1.8	2.1	2.1	2.2	2.3	2.3	2.3	2.4	m				
Interfacing	20"- 1½ yds.												Entoilage	51cm- 1.3m															
Top C	60**	1½	1½	1½	1¾	1¾	1¾	1¾	1¾	1¾	1¾	Yds.	Haut C	150cm*	1.4	1.5	1.5	1.5	1.6	1.6	1.6	1.6	1.7	1.7	m				
Interfacing	20"- 1½ yds.												Entoilage	51cm- 1.4m															
<b>NOTE: Please refer to the sewing instructions for FINISHED GARMENT MEASUREMENTS.</b>												<b>NOTE: S'il vous plaît, reportez-vous au instructions de couture pour les MESURES DU VÊTEMENTS FINI.</b>																	



A



B



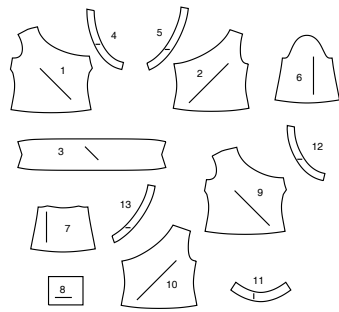
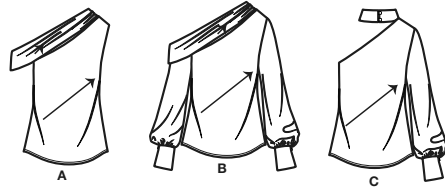
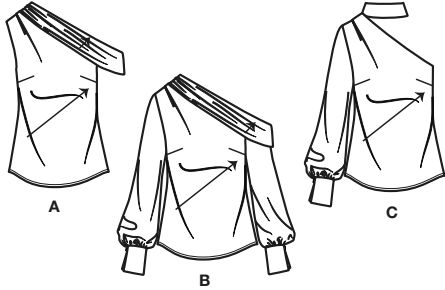
C

\*with nap \*\*without nap

\*avec sens \*\*sans sens

# Simplicity®

Thank you for purchasing this Simplicity pattern. We made every effort to provide you with a high quality product.



- 1 FRONT - A,B
- 2 BACK - A,B
- 3 DRAPE - A,B
- 4 FRONT FACINGS - A,B
- 5 BACK FACING - A,B
- 6 RIGHT SLEEVE - B,C
- 7 LEFT SLEEVE - B,C
- 8 CUFF - B,C
- 9 FRONT - C
- 10 BACK - C
- 11 COLLAR - C
- 12 FRONT FACING - C
- 13 BACK FACING - C

MISSES' SIZES	10	12	14	16	18
EUROPEAN	36	38	40	42	44

FINISHED GARMENT MEASUREMENTS (Includes Design and Wearing Ease)						
A,B,C Bust	37 1/2	39	41	43	45	Ins.
A,B,C Waist	34 1/2	36	38	40	42	"
Width, lower edge						
Top A,B,C	39	40 1/2	42 1/2	44 1/2	46 1/2	Ins.
Finished back length from base of neck						
Top A,B,C	22	22 1/4	22 1/2	22 3/4	23	Ins.

WOMEN'S SIZES										
EUROPEAN	20W	22W	24W	26W	28W	30W	32W	34W	36W	38W
	46	48	50	52	54	56	58	60	62	64

FINISHED GARMENT MEASUREMENTS (Includes Design and Wearing Ease)											
A,B,C Bust	45	47	49	51	53	55	57	59	61	63	Ins.
A,B,C Waist	41 1/4	43 1/4	45 1/4	47 1/4	49 1/4	51 1/4	53 1/4	55 1/4	57 1/4	59 1/4	"
Width, lower edge											
Top A,B,C	43	45	47	49	51	53	55	57	59	61	Ins.
Finished back length from base of neck											
Top A,B,C	24 1/4	24 1/2	24 3/4	25	25 1/4	25 1/2	25 3/4	26	26 1/4	26 1/2	Ins.

## The Pattern General Directions Cutting/Marking

**SYMBOLS**

- ↔ GRAIN LINE Place on straight grain of fabric parallel to selvage
- ⇄ PLACE SOLID LINE on fold of fabric.
- - - - CENTER FRONT OR BACK of garment.
- ▽▽▽ NOTCHES
- ° ○ DOTS
- CUTTING LINE
- == LENGTHEN OR SHORTEN LINES

**ADJUST IF NEEDED**

Make adjustments before placing pattern on fabric.

**TO LENGTHEN:** Cut pattern between lengthen or shorten lines. Spread pattern evenly, the amount needed and tape to paper.

**TO SHORTEN:** At lengthen or shorten lines, make an even pleat taking up amount needed. Tape in place.

**SEAM ALLOWANCE:** 5/8" (1.5cm) unless otherwise stated is included but not printed on MULTI-SIZE PATTERNS. Mark your size with colored felt tip pen. See chart on tissue for how to use MULTI-SIZE PATTERNS.

When lengthen or shorten lines are not given, make adjustments at lower edge of pattern.

**BEFORE CUTTING:**

PRESS pattern pieces with a warm dry iron. PRE-SHRINK fabric by pre-washing washables or steam-pressing non-washables.

CIRCLE your cutting layout.

PIN pattern to fabric as shown in Cutting Layouts.

- FOR DOUBLE THICKNESS: Fold fabric with RIGHT sides together.
- FOR SINGLE THICKNESS: Place fabric RIGHT side up.
- FOR PILE, SHADED OR ONE WAY DESIGN FABRICS: Use "with nap" layouts

**AFTER CUTTING:**

Transfer markings to WRONG side of fabric before removing pattern. Use pin and chalk method or dressmaker's tracing paper and wheel.

**To Quick Mark:**

- Snip edge of fabric to mark notches, ends of fold lines and center lines.
- Pin mark dots.

**Sewing**

- SEW garment following **Sewing Directions**.
- PIN or machine-baste seams matching notches.
- STITCH 5/8" (1.5 cm) seams unless otherwise stated.
- PRESS seams open unless otherwise indicated clipping when necessary so seams will lie flat.
- TRIM seams to reduce bulk, as shown below.

Trim enclosed seams into layers

Trim corners

Clip inner curves

Notch outer curves

**SPECIAL CUTTING NOTES**

- ★ If layout shows a piece extending past fold, cut out all pieces except piece that extends.
- ✳ Mark small arrows along both selvages indicating direction of nap or design. Fold fabric crosswise with RIGHT sides together, and cut along fold (a).

Open out fabric to single thickness. Cut extending piece on RIGHT side of fabric in position shown.

Turn one fabric layer around so arrows on both layers go in the same direction. Place RIGHT sides together (b).

## Cutting Layouts

WRONG SIDE OF FABRIC

RIGHT SIDE OF FABRIC

PATTERN PIECE WITH PRINTED SIDE UP

PATTERN PIECE WITH PRINTED SIDE DOWN

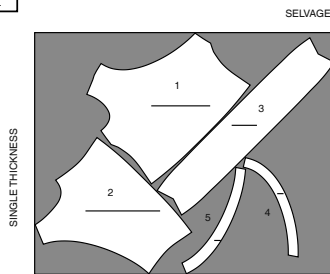
★ SEE SPECIAL CUTTING NOTES

POSITION OF PATTERN PIECES MAY VARY SLIGHTLY ACCORDING TO YOUR PATTERN SIZE

### TOP A

USE PIECES 1 2 3 4 5

60" (150CM) WITH NAP ALL SIZES

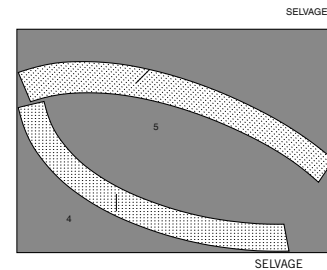


20" (51CM) SIZES 20W 22W 24W 26W 28W 30W 32W 34W 36W 38W

### TOP B

USE PIECES 1 2 3 4 5 6 7 8

60" (150CM) WITH NAP SIZES 10 12 14 16 18 20W 22W 24W



60" (150CM) WITH NAP SIZES 26W 28W 30W 32W 34W 36W 38W

### INTERFACING

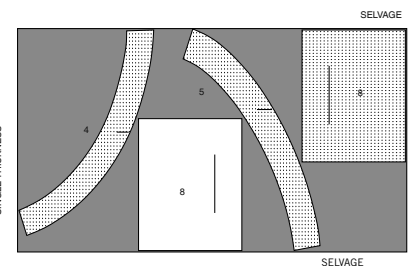
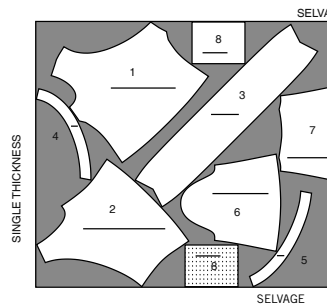
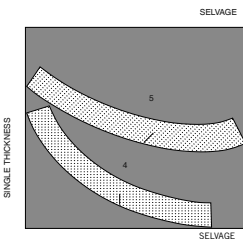
USE PIECES 4 5 8

20" (51CM) SIZES 10 12 14 16 18

### INTERFACING

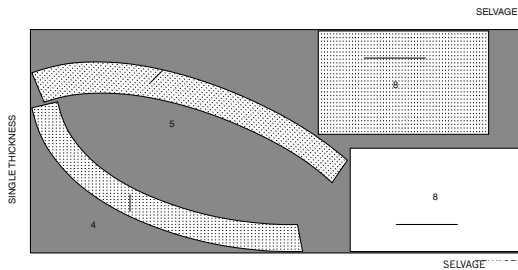
USE PIECES 4 5

20" (51CM) SIZES 10 12 14 16 18



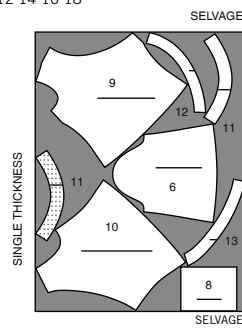
CUTTING LAYOUTS CONTINUED ON PAGE 2

20" (51CM)  
SIZES 20W 22W 24W 26W 28W 30W 32W 34W 36W 38W

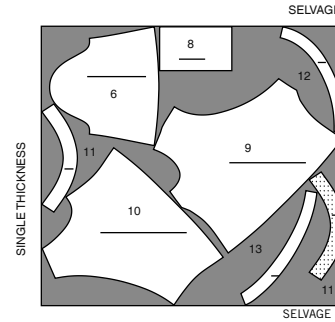


**TOP C**  
USE PIECES 6 8 9 10 11 12 13

60" (150CM)  
WITH NAP  
SIZES 10 12 14 16 18

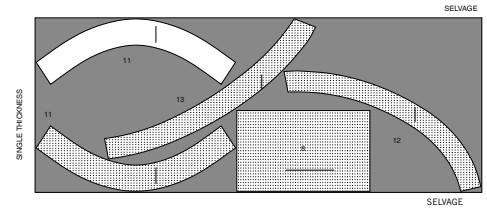


60" (150CM)  
WITH NAP  
SIZES 20W 22W 24W 26W 28W 30W  
32W 34W 36W 38W



**INTERFACING**  
USE PIECES 8 11 12 13

20" (51CM)  
ALL SIZES



SEWING TUTORIALS



Build your skills viewing short, easy-to-follow videos at [simplicity.com/sewingtutorials](http://simplicity.com/sewingtutorials)

**Sewing Directions**

**FABRIC KEY** RIGHT SIDE WRONG SIDE INTERFACING LINING Lining

Read **General Directions** on page 1 before you begin.

Sewing methods in **BOLD TYPE** have Sewing Tutorial Video available. Scan QR CODE to watch videos:

**BIAS ARMHOLE** – see Armholes/Sleeves: “how to sew a bias tape armhole” video.

**EASE/GATHER** – see Gathering: “sewing two row gathers” video.

**EDGESTITCH** – see Machine Stitches: “how to sew an edgestitch” video.

**FLAT DART** – see Darts: “sewing flat dart” video.

**NARROW HEM** – see Hems: “sewing narrow hems” video.

**SLEEVE** – see Armholes/Sleeves: “sewing a set in sleeve” video.

**STAYSTITCH** – see Machine Stitches: “how to do stay stitching” video.

**TACK** – see Hand Stitching: “how to tack” video.

**TRIM SEAM** – see Seams: “how to trim, clip and layer seams” video.

**UNDERSTITCH** – see Machine Stitches: “how to understitch” video.

**PATTERN PIECES WILL BE IDENTIFIED BY NUMBERS THE FIRST TIME THEY ARE USED.**

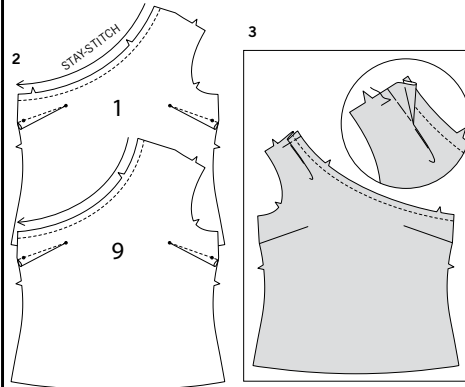
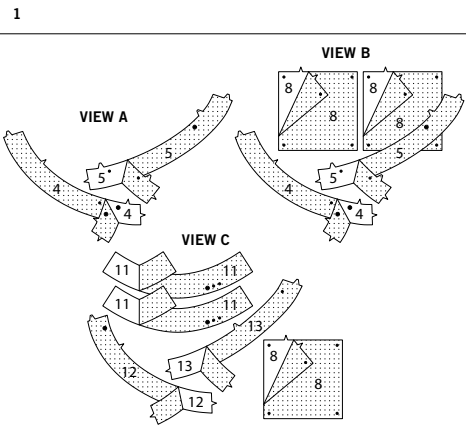
**STITCH 5/8" (1.5CM) SEAMS WITH RIGHT SIDES TOGETHER UNLESS OTHERWISE STATED.**

**TOP A, B, C**

**NOTE: FOR VIEW A** – Trim away 1/4" (6mm) from armhole edges on front (1) and back (2) before stitching seams.

**INTERFACING**

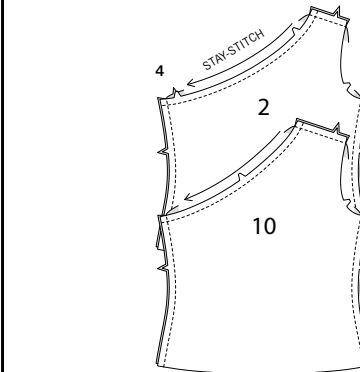
1. Pin interfacing to wrong side of Front Facing (4) and Back Facing (5) for View A, Front Facing (4), Back Facing (5), and Cuff (8) for View B, and Cuff (8), Collar (11), Front Facing (12), and Back Facing (13) for View C. Fuse interfacing in place following manufacturer's directions.



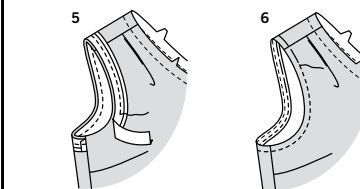
**FRONT AND BACK**

2. **STAYSTITCH** neck edge of Front (1) or (9). Make **FLAT DARTS**.

3. To make a pleat on **RIGHT** shoulder, on outside, fold along solid line. Bring fold to broken line; pin. Baste across raw edge.



4. **STAYSTITCH** neck edge of Back (2) or (10). Stitch front to back at shoulder and side edges.



**ARMHOLE A**

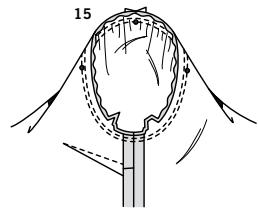
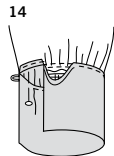
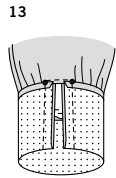
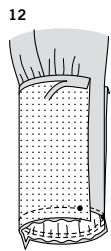
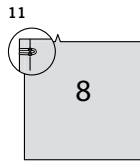
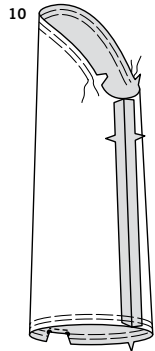
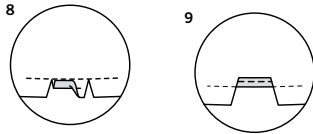
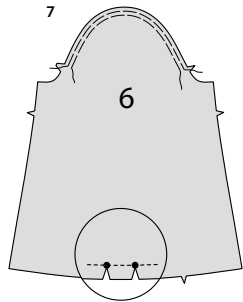
5. Make **BIAS ARMHOLE** on **RIGHT** armhole edge, by opening out one edge of single fold bias tape, and with **RIGHT** sides together, pinning tape to armhole edge having raw edges even, turning under and lapping one end at side seam. Stitch in 3/8" (1cm) seam. **TRIM SEAM**.

6. **UNDERSTITCH** the tape. Turn tape to **INSIDE**; press. Baste close to inner edge of tape. On **OUTSIDE**, top-stitch as basted.

S9851

3 of 4

## RIGHT SLEEVE B, C



**7.** EASE top of Right Sleeve (6) between the notches. To reinforce lower edge of sleeve at small dots, stitch along seam line for about 1" (2.5cm) each side of small dots, stitching through dots, as shown. Clip to stitching at dots.

**8.** Turn clipped edges (between dots) to INSIDE so it just meets stitching; press.

**9.** Turn pressed edge to INSIDE again along stitching; press. Stitch close to inner pressed edge.

**10.** Stitch underarm seam of sleeve. GATHER lower edge between the small dots.

**11.** Cut a piece of elastic cord 1-3/4" (4.5cm) long. Fold elastic in half, forming a loop. On OUTSIDE, pin loop to Cuff (8) between the small dots with raw edges even. Baste.

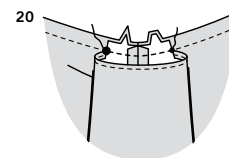
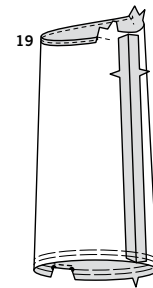
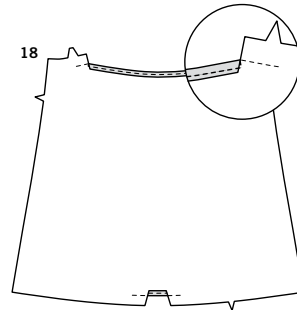
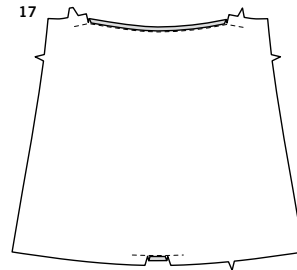
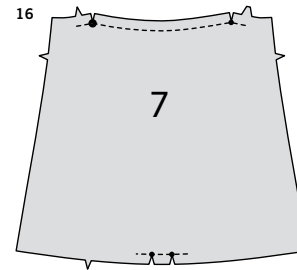
**12.** Press under 5/8" (1.5cm) on unnotched edge of cuff. Trim to 1/4" (6mm). With right sides together, pin sleeve to cuff, matching notches, placing opening edges at small dots, pulling up gathering stitches to fit. Baste. Stitch. TRIM SEAM.

**13.** Press seam toward cuff, pressing cuff out. Fold cuff along foldline, with RIGHT sides together. Stitch ends. TRIM SEAMS.

**14.** Turn cuff; press. On INSIDE, pin pressed edge of cuff over seam, placing pins on OUTSIDE. On OUTSIDE, EDGESTITCH cuff close to seam, catching in pressed edge of cuff on INSIDE and removing pins as you come to them.

**15.** Stitch SLEEVE to right armhole, matching small dots and notches, pulling up gathering stitches to fit. Baste. Stitch. Stitch again 1/8" (3mm) away in seam allowances. Trim between notches.

## LEFT SLEEVE B



**16.** To reinforce lower edge of Left Sleeve (7) at small dots, stitch along seam line for about 1" (2.5cm) each side of small dots, stitching through dots, as shown. clip to stitching at dots. Reinforce upper edge of sleeve between large dot and small dot, stitching along seamline, lapping dots about 1" (2.5cm), and clipping to stitching.

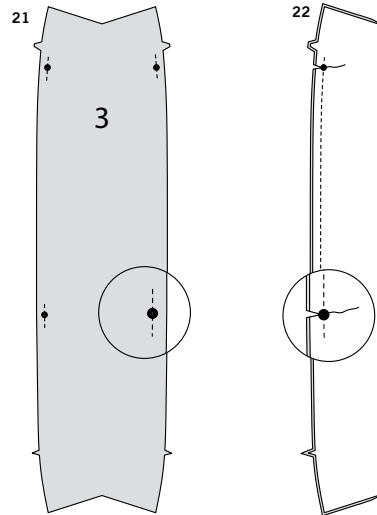
**17.** Turn clipped edges (between dots) to INSIDE so they just meet stitching; press.

**18.** Turn pressed edge to INSIDE again along stitching; press. Stitch close to inner pressed edges, squaring stitching at dots along upper edge.

**19.** Stitch underarm seam of sleeve. GATHER lower edge between the small dots. Stitch remaining cuff to lower edge of sleeve in the same manner as for right sleeve.

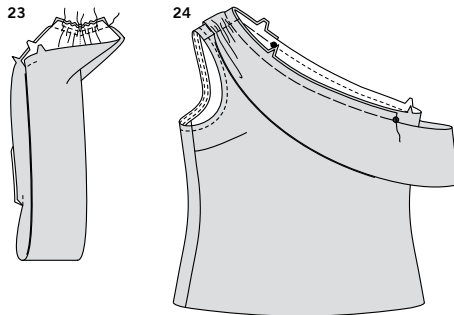
**20.** On outside, pin sleeve to LEFT side of front and back, matching seams, small dots, large dots, and notches. Baste; stitch between small and large dots, back-stitching at dots to reinforce the seam.

## DRAPE A, B



**21.** To reinforce notched edges of Drape (3) at large dots, stitch along seam line for about 1" (2.5cm) each side large dots, stitching through dots, as shown.

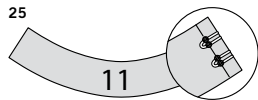
**22.** Fold drape along foldline with RIGHT sides together. Stitch between the large dots, back-stitching at dots to reinforce the seam. Clip seam to stitching at large dots. **TRIM SEAM.**



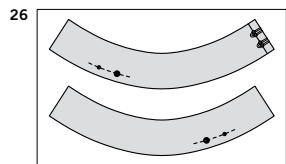
**23.** Turn drape. Open out ends. With RIGHT sides together, pin ends. **GATHER** ends between the foldline and the seamlines breaking stitching at foldline. Pull up each half to 1-1/2" (3.8cm). Stitch along seamline.

**24.** Turn ends to INSIDE; press drape along foldline. Baste raw edges together. On OUTSIDE, pin drape to neck edge, matching seams, large dots, and notches. Baste.

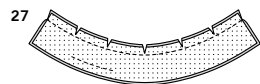
## COLLAR C



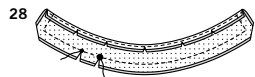
**25.** Cut two pieces of elastic cord 1-3/4" (4.5cm) long. Fold elastic in half, forming a loop. On OUTSIDE, pin loops to Collar (11) between the small dots with raw edges even. Baste.



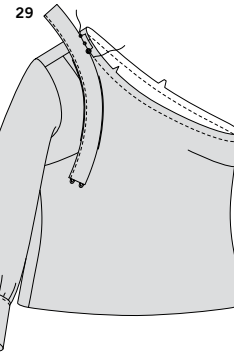
**26.** To reinforce lower edges of collar and collar facing at outer small dot and large dot, stitch along seam line for about 1" (2.5cm) each side of small and large dots, stitching through dots, as shown.



**27.** With RIGHT sides together and raw edges even, pin collar to collar facing along upper edge. Stitch. **TRIM SEAM.**

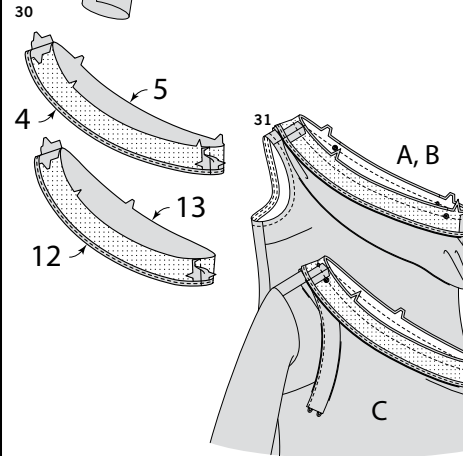


**28.** **UNDERSTITCH** upper edge of collar facing. Stitch collar to facing at ends and lower edge leaving an opening between outer small dot and large dot, backstitching at dots to reinforce the seam. Clip seam to stitching at dots. **TRIM SEAM.**



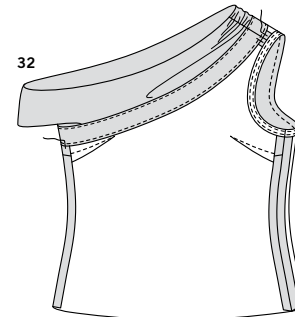
**29.** Turn collar; press, pressing out seam allowance between the dots. On OUTSIDE, pin collar to neck edge at RIGHT shoulder, matching small and large dots, placing inner small dot at shoulder seam. Baste.

## FACING



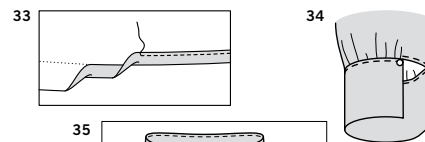
**30.** With RIGHT sides together, pin Front Facing (4) or (12) to Back Facing (5) or (13) at ends. Stitch. Finish unnotched edge by stitching 1/4" (6mm) from the raw edge and finishing with pinking, overcasting, or turning in along stitching and stitching close to fold, or overlock.

**31.** With RIGHT sides together, pin facing to neck edge of blouse, matching RIGHT shoulder seams, LEFT side seams, small dots, large dots, and notches. Stitch. **TRIM SEAM.**



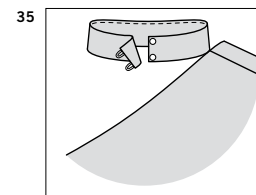
**32.** **UNDERSTITCH** the facing. Turn facing to INSIDE; press. **TACK** facing to shoulder and side seam allowances.

## FINISHING



**33.** Press up 5/8" (1.5cm) hem allowance on lower edge of blouse. **NARROW HEM.**

**34.** **FOR VIEW B, C** – Sew button to cuff at small dot.



**35.** **FOR VIEW C** – Sew buttons to collar at small dots.



# Congrats!

You've completed your sewing adventure

---

**SHARE  
YOUR** LOOK



Post your pattern and tag us  
**@simplicity\_creative\_group** and **#simplicitypatterns**  
for a chance to be featured on our social media.

Look for more PDF patterns at [simplicity.com](https://www.simplicity.com)

Have a question or need help with your sewing project call us at  
1-888-588-2700



Simplicity ©2023 a division of IG Design Group Americas Inc. • Atlanta, GA 30342 USA [www.thedesigngroup.com](https://www.thedesigngroup.com) • All Rights Reserved. [www.simplicity.com](https://www.simplicity.com) • Made in the U.S.A. Fabriqué aux États-Unis.

To be used for individual private home use only and not for commercial or manufacturing purposes. • A usage privé seulement et non à des fins commerciales ou de production en série. • Para uso privado solamente, no se puede utilizar con propósitos de comercialización o de producción en serie.