

S9849

Simplicity

1950s Vintage



Average

MISSES' DRESS WITH SKIRT VARIATIONS

Suggested Fabrics: Broadcloth, Chambray, Cottons, Cotton Blends, Linen, Pique, Rayons, Shantung, Silk, Synthetics, Taffeta. **View 1** also in Peau de soie, Satin. **View 2** also in Crepe, Jersey, Wools. **Interfacing:** Lightweight Sew-in (optional).

Notions: Views 1,2: One 7" (18cm) zipper, one 14" (36cm) zipper (for side opening), bias seam binding (optional), pair of round shoulder pads (optional).

Sizes	6	8	10	12	14	16	18	20	22	24
European	32	34	36	38	40	42	44	46	48	50

BODY MEASUREMENTS: Select pattern size based on body measurements

Bust	30½	31½	32½	34	36	38	40	42	44	46	Ins.
Waist	23	24	25	26½	28	30	32	34	37	39	"
Hip-9" below waist	32½	33½	34½	36	38	40	42	44	46	48	"
Back-neck to waist	15½	15¾	16	16¼	16½	16¾	17	17¼	17½	17¾	"

Interfacing 1,2 (opt.)

	20" - ¼ yd.											
Dress 1	45**	3¾	3¾	3¾	4	4¼	4¼	4½	4½	4½	4½	Yds.
	60**	2¾	2¾	3	3	3¾	3¾	3¾	3¾	3¾	3¾	"
Dress 2	45**	3	3	3	3¾	3¾	3¾	3¾	3¾	3¾	3¾	Yds.
	60**	2¾	2¾	2¾	2¾	2¾	2¾	2¾	2¾	2¾	2¾	"

FINISHED GARMENT MEASUREMENTS (Includes Design and Wearing Ease)

1,2 Bust	32	33	34	35½	37½	39½	41½	43½	45½	47½	Ins.
1,2 Waist	24	25	26	27½	29½	31½	33½	35½	37½	39½	"
2 Hip	36½	37½	38½	40	42	44	46	48	50	52	"
Width, lower edge											
Dress 1	91½	92½	93½	95	97	99	101	103	105	107	"
Dress 2	40	41	42	43½	45½	47½	49½	51½	53½	55½	"
Finished back length from base of neck											
Dress 1,2	44½	44¾	45	45¼	45½	45¾	46	46¼	46¾	46¾	Ins.

*with nap **without nap

Moins Facile

ROBE AVEC VARIATIONS DE JUPE POUR JEUNES FEMMES

Tissus Conseillés: Popeline fine, Chambray, Cotons, Cotonnades, Toile de lin, Piqué, Rayonnes, Shantung, Soie, Tissus synthétiques, Taffetas. **Modèle 1** aussi en Peau de soie, Satin. **Modèle 2** aussi en Crêpe, Jersey, Laines. **Entoilage:** léger à coudre (facultatif).

Mercerie: Modèles 1,2: 1 fermeture à glissière de 18cm, 1 fermeture à glissière de 36cm (pour l'ouverture du côté), extra-fort en biais (facultatif), 1 paire d'épaulettes arrondies (facultatif).

Tailles	6	8	10	12	14	16	18	20	22	24
Françaises	34	36	38	40	42	44	46	48	50	52
Européen	32	34	36	38	40	42	44	46	48	50

MESURES DU CORPS: Choisissez la taille du patron basée sur les mesures du corps

Poitrine	78	80	83	87	92	97	102	107	112	117	cm
Taille	58	61	64	67	71	76	81	87	94	99	"
Hanches (23cm au-dessous de la taille)	83	85	88	92	97	102	107	112	117	122	cm
Dos du cou à la taille	39.5	40	40.5	41.5	42	42.5	43	44	44	44.5	"

Entoilage 1,2 (facultatif)

	51cm - 0.2m											
Robe 1	115cm*	3.4	3.5	3.5	3.7	3.8	3.8	4.0	4.0	4.1	4.1	m
	150cm*	2.6	2.6	2.7	2.7	2.9	2.9	2.9	3.0	3.0	3.0	"
Robe 2	115cm*	2.7	2.7	2.7	2.7	2.9	2.9	2.9	2.9	3.0	3.0	m
	150cm*	2.2	2.2	2.2	2.2	2.2	2.2	2.2	2.2	2.2	2.2	"

MESURES DES VÊTEMENTS FINI (Motif et aisance de port compris)

1,2 Poitrine	81	84	86	90	95	100	105	110	116	121	cm
1,2 Taille	61	64	66	70	75	80	85	90	95	100	"
2 Hanches	93	95	98	102	107	112	117	122	127	132	"
Largeur à l'ourlet											
Robe 1	232	235	237	241	246	251	257	262	267	272	cm
Robe 2	102	104	107	110	116	121	126	131	136	141	"
Longueur finie - dos, votre nuque à l'ourlet											
Robe 1,2	113	114	114	115	116	116	117	117	118	119	cm

*avec sens **sans sens



1



2

AUTHENTIC VINTAGE PATTERN REPRODUCTION

INCLUDES ADDITIONAL SIZE OPTIONS AND CUTTING LAYOUTS

Follow This Step-By-Step Procedure in the Numbered Order

1 Select the Pattern Pieces for the view you are making. Return other pieces to envelope.

2 Press the Pattern Pieces.

3 Compare Your Measurements with the pattern.

4 Alterations, if necessary, should be made in the pattern before placing on fabric. **(Caution:** In addition to body measurements, ease is allowed in the pattern for garment style and comfortable wearing.) Pattern pieces show where to make simple alterations such as:



To Shorten

Crease on printed line. Pin a pleat in pattern the required amount.



To Lengthen

Put pattern on printed line. Place paper underneath. Spread pattern apart the necessary amount and pin to paper. See the **Simplicity Sewing Book** for other alterations.

5 Prepare Fabric. Press creases out of fabric. Unless fabric is pre-shrunk, sponge or shrink before cutting.

To Straighten End. Slip selvage and pull a crosswise thread. Cut on this line. Some fabrics may be straightened by tearing.

To Straighten Threads. If crosswise threads of fabric are not at perfect right angles to the selvage, pull the fabric on the bias in the opposite direction until crosswise threads are straight and square with the selvage.

6 Cutting Preparation.

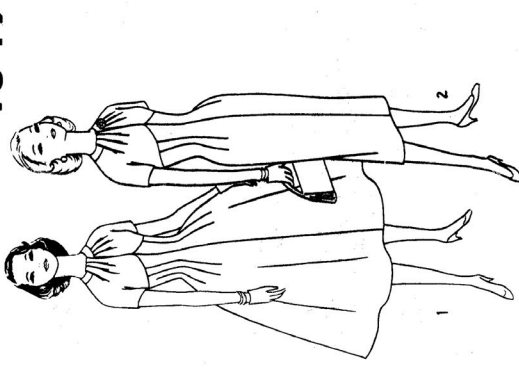
a. Circle in pencil the cutting layout for the view, size and fabric width.
b. If pattern is to be cut on **double thickness of fabric**, fold fabric with right side inside and place pattern on wrong side. For **single thickness**, place pattern on right side of fabric.

c. **Guides for using your pattern:**
← This grain line indicates straight of fabric. Place pattern with ends of arrows an even distance from selvage or a straight thread.

→ These fold lines indicate fold of fabric. Turn margins under on printed line before placing on fold of fabric.

◆ Notches mark seams to be joined.
d. Follow your cutting layout when placing pattern pieces on fabric. Pattern may be placed on fabric, printed side up or against fabric, as shown in layout.

e. When duplicate pieces are cut one at a time, reverse the pattern for the second piece. On cutting layouts, duplicate pieces are shown by broken lines. When a pattern piece extends beyond fold of fabric, cut out all other pattern pieces, then open fabric and cut that pattern piece.



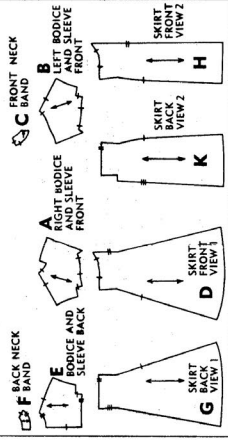
Simplicity primer
Guide for Cutting — Sewing — Detailed Dressmaking
1849

THE SIMPLICITY SEWING BOOK gives complete instructions and illustrations on all phases of sewing

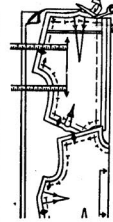
Study the pattern pieces and see cutting notes.

VIEW 1 A,B,C,D,E,F,G
VIEW 2 A,B,C,E,F,H,K

9 PIECES GIVEN



7 To Cut. Do not trim margins off. Margins may be overlapped when placing pattern on fabric. Cut through pattern and fabric exactly on cutting line. Margins fall away as you cut.



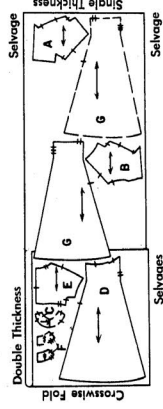
Cutting Notes For This Pattern

VIEW 1 AND 2
NOTE: When dress is made of nap or heavy fabric, neck band facings may be cut of lightweight fabric.

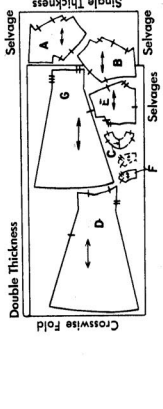
Cutting Layouts

View 1

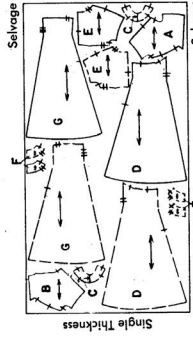
Sizes 11, 12, 13, 14 - 35" 36" Fabric Without Nap



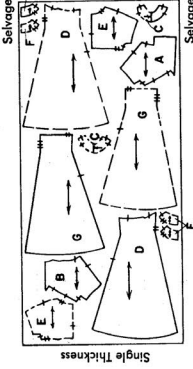
Sizes 15, 16, 18 - 35" 36" Fabric Without Nap



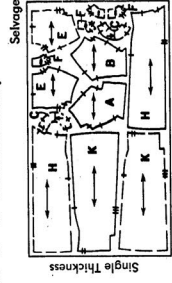
Sizes 11, 12, 13, 14 - 50" Fabric With Or Without Nap



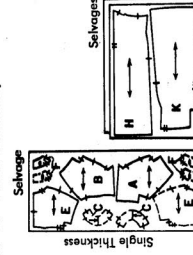
Sizes 15, 16, 18 - 50" Fabric With Or Without Nap



Sizes 15, 16, 18 - 44" 45" Fabric Without Nap

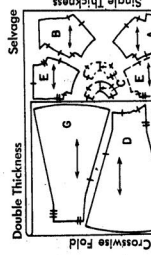
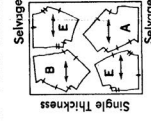


Sizes 11, 12, 13, 14 - 50" Fabric Without Nap

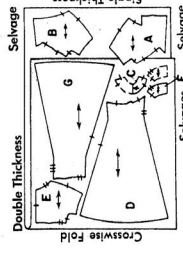


View 2

All Sizes 35" 36" Fabric Without Nap



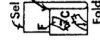
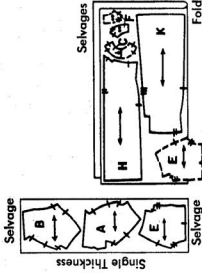
Sizes 11, 12, 13, 14, 15
44" 45" Fabric Without Nap



Sizes 16, 18 - 44" 45" Fabric Without Nap

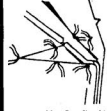
View 1-2
NECK BAND INTERFACING

All Sizes 25" 35" 36" Fabric

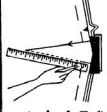


8 Mark Fabric. Construction details must be marked on the fabric. Mark center front and back with a 1/4 inch clip at top and bottom. **Tailor's Tacks.** Use long double

thread without knot. Take 2 small stitches thru pattern and both fabric layers, leaving long loop. Cut top loops and remove pattern. Separate fabric, clip threads between fabric



layers, leaving thread tufts on both. **Tracing Wheel and Dressmaker's Tracing Paper.** Markings should be made on wrong side of fabric. Use ruler to guide



straight lines; mark curves freehand. **For doubled fabric:** lay one piece of tracing paper face up under the wrong side of fabric. **Do not remove pattern until ready to work on each piece.**

For single thickness: lay one piece of tracing paper face up under the wrong side of fabric. **Do not remove pattern until ready to work on each piece.**

1849

SEWING DIRECTIONS

1. **READ INSTRUCTIONS** printed on each pattern piece as you work.
 2. **WORK IN UNITS** such as Right Bodice And Sleeve Front, Left Bodice And Sleeve Front, etc.
 3. **STAY-STITCH** off-grain curved or bias edges. Stay-stitching is a line of regular machine-stitching (in one thickness of fabric) close to the seam line, within the seam allowance.
 4. **SEAM ALLOWANCE** is 5/8" unless otherwise stated.
 5. **TO JOIN SEAMS**, match notches with same numbers, 1 to 1, 2 to 2. Continue in this order.
 6. **STITCHING DIRECTIONS** are shown on your printed pattern. Press each seam before it is joined to another. Press in same direction as it was stitched.
 7. **FITTING:** Try on garment; make adjustments if necessary.
- NOTE:** We suggest machine-basting. To machine-baste, use longest machine-stitch.

DRESS VIEW 1

UNIT 1 - RIGHT BODICE AND SLEEVE FRONT

To reinforce neck edge of RIGHT front, machine-stitch along seam line at neck edge, stitching as far as medium dot ●, as shown.

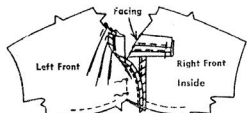


On OUTSIDE, stitch one edge of bias seam binding 1/4" over long unnotched edge of front (or stitch under 1/4" on raw edge.)

To ease in fullness at lower edge, make a row of machine-stitching along seam line between notches, using a long machine-stitch.

To make 2 soft pleats nearest front edge, on OUTSIDE, fold along solid lines. Bring folds to broken lines. Baste along folds.

UNIT 2 - LEFT BODICE AND SLEEVE FRONT AND CENTER SEAM



Prepare LEFT front same as for RIGHT; reinforce entire neck edge and make three pleats in LEFT front.

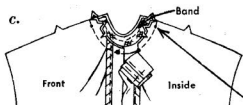
With RIGHT sides together, pin RIGHT front to LEFT front along fold line, matching small dots ●. Stitch along fold line between small dots ●, as shown. Press seam open, pressing remaining edge of front to INSIDE along fold line, forming facing. Baste facing to upper edge.

UNIT 3 - FRONT NECK BAND



a-Stay-stitch interfacing to WRONG side of band.

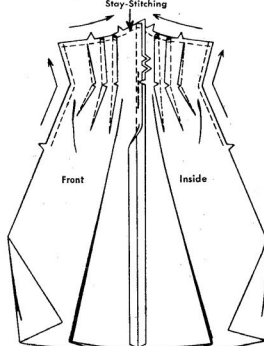
b-Clip bodice neck edge to stay-stitching. Clip RIGHT front to small dot ● at inner corner, as shown.



c-With RIGHT sides together, pin band to bodice, matching centers front (in LEFT front) and small dots ●, as shown. (Leave pleated section of RIGHT front free.) Stitch seam.

Trim interfacing close to stitching. Trim seam; clip curve. Press seam toward band, pressing under seam allowance on remaining lower edge of band.

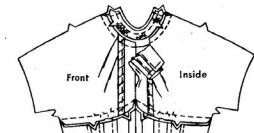
UNIT 4 - SKIRT FRONT



To make darts in skirt front sections, on INSIDE, fold along solid lines. Stitch along broken lines. Clip darts at waistline; press toward center.

Join center front seam. To reinforce seam at waistline, stitch again over first stitching. Clip seam at waistline; press open.

JOINING BODICE FRONT UNIT TO SKIRT FRONT UNIT

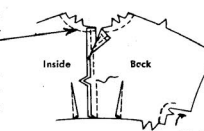


With RIGHT sides together, pin bodice to skirt, matching centers. Pull up machine-stitching to fit between notches. Stitch seam. Trim seam and press down.

UNIT 5 - BODICE AND SLEEVE BACK

Machine-stitch bodice back along seam line at neck edge.

Make dart in back. Press dart toward center. Join center back seam as far as notch.

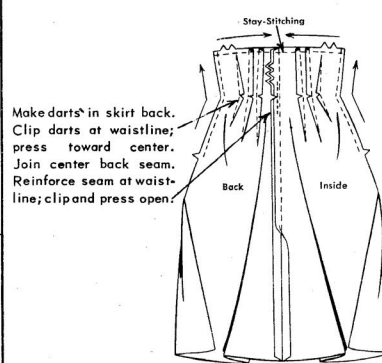


UNIT 6 - BACK NECK BAND

Stay-stitch interfacing to WRONG side of band sections. Clip bodice neck edge to stay-stitching.

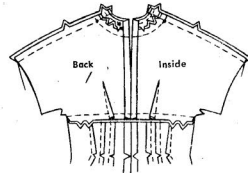
With RIGHT sides together, stitch band to bodice back, matching small dots ●. Trim interfacing close to stitching. Trim seam; clip curve. Press seam toward band.

UNIT 7 - SKIRT BACK



Make darts* in skirt back. Clip darts at waistline; press toward center. Join center back seam. Reinforce seam at waistline; clip and press open.

JOINING BODICE BACK UNIT TO SKIRT BACK UNIT AND SHOULDER SEAMS



With RIGHT sides together, baste bodice to skirt, matching centers, easing bodice to fit between dart and notch. Stitch seam. Trim and press down.

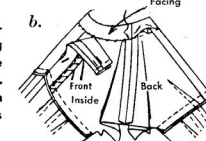
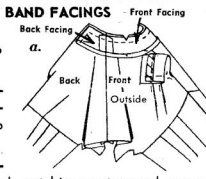
Join front unit to back unit at shoulder seams, easing back to fit between notch and small dot ●.

UNIT 8 - BAND FACINGS

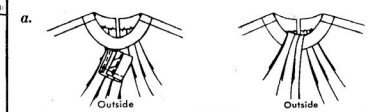
a-Join front facing to back facing at shoulders. Press under seam allowance on notched edges of facing. Trim to 1/4".

With RIGHT sides together, pin facing to band, matching centers and seams. Stitch along back opening and neck edges. Trim interfacing close to stitching. Trim seam and corners; clip curve.

b-Turn facing to INSIDE; press, pressing under seam allowance on back opening edges. Slip-stitch facing in place, matching centers and seams.



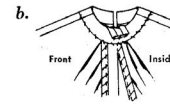
FINISHING RIGHT BODICE FRONT



a-Press under raw edge of RIGHT front pleated section along fold line of medium dots ●. Baste along fold. Stitch 1/4" from raw upper edge.

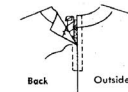
On OUTSIDE, pin pleated section of RIGHT front to neck edge of front band, bringing fold line of medium dots ● to broken line of small dots ●, matching centers front.

b-Turn raw edge to INSIDE, over neck band. Overcast to facing.



BACK ZIPPER

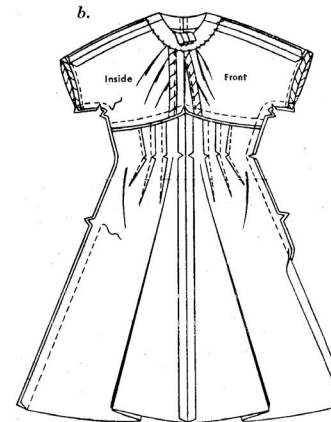
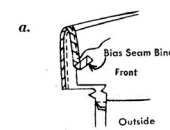
Place closed zipper under back opening edges, with lower end of zipper at lower end of opening, having opening edges meet at center of zipper. Baste, turning under tape of zipper at neck edge.



Stitch, using a zipper foot. Sew hook and eye at neck edge.

LOWER EDGE OF SLEEVES AND UNDERARM SEAMS

a-On OUTSIDE, stitch one edge of bias seam binding 1/4" over lower edge of sleeves.



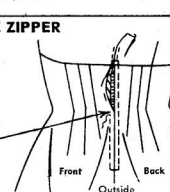
b-Join front unit to back unit at underarm, leaving LEFT side open between notches. Reinforce seam at waistline. Clip seam at waistline and press open. Clip curves.

c-To reinforce curve at underarm, turn dress INSIDE out.

Machine stitch on the OUTSIDE of dress close to seam line on each side of seam. Turn lower edges of sleeve to INSIDE along seam line and slip-stitch bias in place.

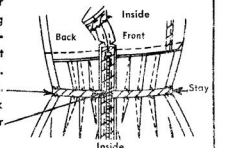
SIDE ZIPPER

Place closed zipper under side opening edges, with lower end of zipper at lower end of opening, having opening edges meet at center of zipper. Baste, easing fabric over zipper. Stitch, using a zipper foot.



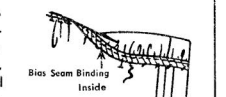
WAISTLINE STAY

On INSIDE, pin center of straight seam binding or ribbon along waistline, placing ends at side opening edges. Tack to darts and seams. Turn under and tack ends of stay to zipper tape.



HEM

Mark length. Turn up lower edge along marking; press. Mark depth of hem; trim evenly. Gather raw edge and pull up gathers so that hem will lie flat. (Shrink out gathers.) Stitch one edge of bias seam binding 1/4" over raw edge; (or stitch under 1/4" on raw edge and slip-stitch in place, pleating out fullness.)



Press dress thoroughly. If shoulder pads are used, sew them in place.

DRESS VIEW 2

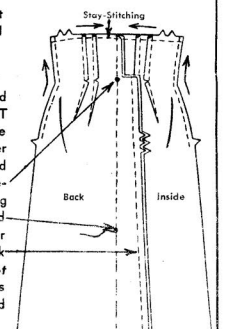
Prepare Dress same as View 1, see Units 1 thru 4, substituting pattern H for D.

Continue same as in Units 5 and 6.

UNIT 9 - SKIRT BACK

Make darts. Clip at waistline; press toward center.

To form pleat and center back, with RIGHT sides together, baste back sections together along pleat line and seam line, matching medium dots ●. Stitch along seam line above second medium dot ● from upper edge. Join seam of back extensions. (Do not press seam open.) Press pleat and seam toward LEFT back.



Continue Dress same as in View 1, Unit 7, starting with Joining Bodice Back Unit To Skirt Back Unit And Shoulder Seams. Make same as in Unit 8, omitting hem.

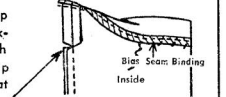
Sew upper edge of pleat extensions to waistline stay.

HEM

Mark length. Turn up lower edge along marking; press. Mark depth of hem; trim evenly. Clip seam edges of pleat seam to the stitching at top of hem. Press seam open in hem.

Stitch one edge of bias seam binding 1/4" over raw edge (or stitch under 1/4" on raw edge.) Slip-stitch in place, easing in fullness.

Press Dress thoroughly. If shoulder pads are used, sew them in place.

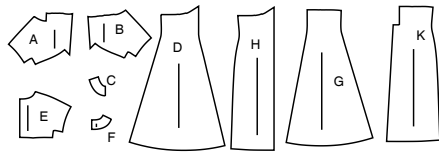


Simplicity®

Thank you for purchasing this Simplicity pattern. We made every effort to provide you with a high quality product.

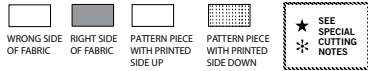
SUPPLEMENTAL CUTTING LAYOUTS

9 PIECES



- A Right Bodice and Sleeve Front
- B Left Bodice and Sleeve Front
- C Front Neck Band
- D Skirt Front - View 1
- E Bodice and Sleeve Back
- F Back Neck Band
- G Skirt Back - View 1
- H Skirt Front - View 2
- K Skirt Back - View 2

Cutting Layouts

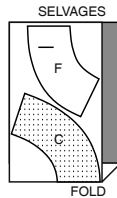


POSITION OF PATTERN PIECES MAY VARY SLIGHTLY ACCORDING TO YOUR PATTERN SIZE

INTERFACING 1,2

USE PIECES C F

20" (51CM)
ALL SIZES

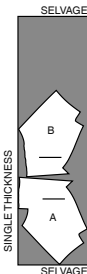
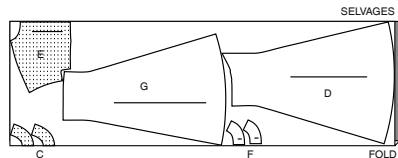


DRESS 1

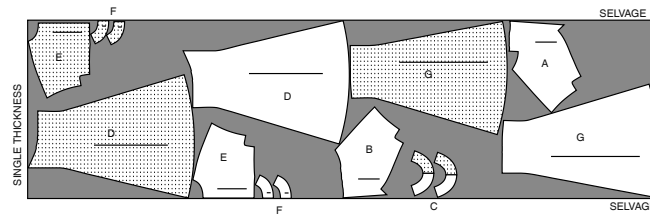
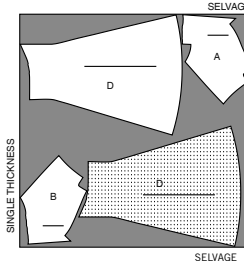
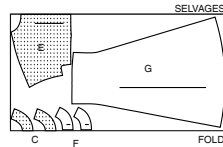
USE PIECES A B C D E F G

45" (115CM)
WITH NAP
ALL SIZES

60" (150CM) WITH NAP
SIZES 6 8 10 12 14 16 18



60" (150CM)
WITH NAP
SIZES 20 22 24



General Directions

The Pattern

- SYMBOLS**
- ↔ GRAIN LINE Place on straight grain of fabric parallel to selvage
 - ⇄ PLACE SOLID LINE on fold of fabric.
 - - - - CENTER FRONT OR BACK of garment.
 - ∇ ∇ NOTCHES
 - ○ DOTS
 - CUTTING LINE
 - == LENGTHEN OR SHORTEN LINES

SEAM ALLOWANCE: 5/8" (1.5cm) unless otherwise stated is included but not printed on MULTI-SIZE PATTERNS. Mark your size with colored felt tip pen. See chart on tissue for how to use MULTI-SIZE PATTERNS.

ADJUST IF NEEDED
Make adjustments before placing pattern on fabric.

TO LENGTHEN:
Cut pattern between lengthen or shorten lines. Spread pattern evenly, the amount needed and tape to paper.

TO SHORTEN:
At lengthen or shorten lines, make an even pleat taking up amount needed. Tape in place.

When lengthen or shorten lines are not given, make adjustments at lower edge of pattern.

Cutting/Marking

BEFORE CUTTING:
PRESS pattern pieces with a warm dry iron. PRE-SHRINK fabric by pre-washing washables or steam-pressing non-washables.

CIRCLE your cutting layout.

PIN pattern to fabric as shown in Cutting Layouts.

• FOR DOUBLE THICKNESS: Fold fabric with RIGHT sides together.

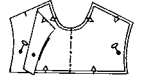
• FOR SINGLE THICKNESS: Place fabric RIGHT side up.

• FOR PILE, SHADED OR ONE WAY DESIGN FABRICS: Use "with nap" layouts

AFTER CUTTING:
Transfer markings to WRONG side of fabric before removing pattern. Use pin and chalk method or dressmaker's tracing paper and wheel.

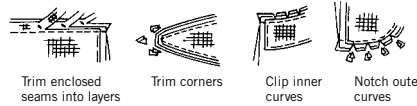
To Quick Mark:

- Snip edge of fabric to mark notches, ends of fold lines and center lines.
- Pin mark dots.



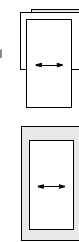
Sewing

- SEW garment following Sewing Directions.
- PIN or machine-baste seams matching notches.
- STITCH 5/8" (1.5 cm) seams unless otherwise stated.
- PRESS seams open unless otherwise indicated clipping when necessary so seams will lie flat.
- TRIM seams to reduce bulk, as shown below.



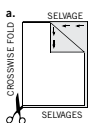
SPECIAL CUTTING NOTES

★ If layout shows a piece extending past fold, cut out all pieces except piece that extends.

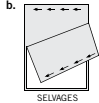


Open out fabric to single thickness. Cut extending piece on RIGHT side of fabric in position shown.

✳ Mark small arrows along both selvages indicating direction of nap or design. Fold fabric crosswise with RIGHT sides together, and cut along fold (a).



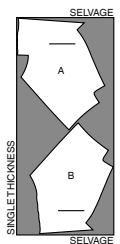
Turn one fabric layer around so arrows on both layers go in the same direction. Place RIGHT sides together (b).



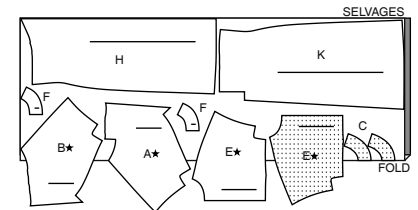
DRESS 2

USE PIECES A B C E F H K

45" (115CM) WITH NAP
ALL SIZES



60" (150CM)
WITH NAP
ALL SIZES





Congrats!

You've completed your sewing adventure

**SHARE
YOUR** LOOK



Post your pattern and tag us
@simplicity_creative_group and **#simplicitypatterns**
for a chance to be featured on our social media.

Look for more PDF patterns at [simplicity.com](https://www.simplicity.com)

Have a question or need help with your sewing project call us at
1-888-588-2700



Simplicity ©2023 a division of IG Design Group Americas Inc. • Atlanta, GA 30342 USA www.thedesigngroup.com • All Rights Reserved. www.simplicity.com • Made in the U.S.A. Fabriqué aux États-Unis.

To be used for individual private home use only and not for commercial or manufacturing purposes. • A usage privé seulement et non à des fins commerciales ou de production en série. • Para uso privado solamente, no se puede utilizar con propósitos de comercialización o de producción en serie.