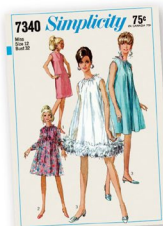


S9848

Simplicity®

1960s Vintage



easy-to-sew



Easy

## MISSES' DRESS

**Suggested Fabrics:** All views in Brocade, Challis, Crepe, Metallic Knits, Matelasse, Silks, Synthetics and Blends. **View 1** also in Cottons and Cotton Blends, Linen, Metallic Brocades, Metallic Crepe. **Views 1 and 2** also in Jersey, Lightweight Wool and Wool Blends, Printed Wools, Wool Crepe. **Views 2, 3** also in Chiffon, Cotton Sheers, Lace, Metallic Netting, Voile.

**Notions:** **Views 1,2,3:** Bias seam binding. **Also for View 1:** 22" (56cm) zipper. **Also for Views 2,3:** 3½ yds. (3.0m) of ¼" (1.5cm) wide horsehair (when dress is made of lace). **Also for View 3:** 5½ yds. (5.3m) of ostrich feather trim (optional).

Sizes	8	10	12	14	16	18	20	22	24	26
European	34	36	38	40	42	44	46	48	50	52

## BODY MEASUREMENTS: Select pattern size based on body measurements

Bust	31½	32½	34	36	38	40	42	44	46	48	Ins.
Waist	24	25	26½	28	30	32	34	37	39	41½	"
Hip-9" below waist	33½	34½	36	38	40	42	44	46	48	50	"
Back-neck to waist	15½	16	16¼	16½	16¾	17	17¼	17½	17¾	17¾	"

Dress 1	45**	2½	2½	2½	2½	2½	2½	2½	2½	2½	Yds.
	60**	1½	1½	1½	1½	1¾	1¾	1¾	1¾	2	"

Dress 2	60**	3%	3%	3%	3¼	3¼	3¼	3¼	3¼	3%	Yds.
Contrast Bias binding for neck and bow when dress is made of lace (opt.)											

45,60\*\* - ½ yd.

Dress 3	60**	2½	2%	2%	2%	2%	2%	2%	2%	2%	Yds.
Contrast Bias binding for neck and armhole edges and bow when dress is made of lace (opt.)											

45,60\*\* - ½ yd.

**Note:** Please refer to the sewing instructions for **FINISHED GARMENT MEASUREMENTS**.

\*with nap \*\*without nap

Facile

## ROBE POUR JEUNES FEMMES

**Tissus Conseillés:** Tous les modèles en Brocart, Challis, Crêpe, Tricotés métallisés, Tissus matelassés, Soies, Tissus synthétiques et mélanges. **Modèle 1** aussi en Cotons et cotonnades, Toile de lin, Brocarts métallisés, Crêpe métallisé. **Modèles 1 et 2** aussi en Jersey, Laine et Mélanges de laine léger, Laines imprimés, Crêpe de laine. **Modèles 2, 3** aussi en Mousseline de soie, Tissu transparent en coton, Dentelle, Maille métallisée, Voile.

**Mercerie:** **Modèles 1,2,3:** Extra-fort en biais. **Aussi pour le Modèle 1 :** fermeture à glissière de 56cm. **Aussi pour les Modèles 2,3:** 3.0m de galon satiné de 1.5 cm de large (si la robe est faite en dentelle). **Aussi pour le Modèle 3:** 5.3m de galon plume d'autruche (facultatif).

Tailles	8	10	12	14	16	18	20	22	24	26
Françaises	36	38	40	42	44	46	48	50	52	54
Européen	34	36	38	40	42	44	46	48	50	52

## MESURES DU CORPS: Choisissez la taille du patron basée sur les mesures du corps

Poitrine	80	83	87	92	97	102	107	112	117	122	cm
Taille	61	64	67	71	76	81	87	94	99	106	"

## Hanches (23cm au-dessous de la taille)

	85	88	92	97	102	107	112	117	122	127	cm
Dos du cou à la taille	40	40.5	41.5	42	42.5	43	44	44	44.5	44.5	"

Robe 1	115cm*	2.3	2.3	2.3	2.3	2.3	2.4	2.4	2.4	2.4	m
	150cm*	1.4	1.4	1.4	1.5	1.6	1.6	1.6	1.7	1.8	"

**Robe 2** 150cm\* 2.9 2.9 2.9 3.0 3.0 3.0 3.0 3.0 3.1 3.1 m  
Bordure en biais contrastante pour les bords de l'encolure et nœud si la robe est faite en dentelle (facultatif).

115,150cm\* - 0.6m

Robe 3	150cm*	2.3	2.3	2.3	2.4	2.4	2.4	2.4	2.4	2.4	m
--------	--------	-----	-----	-----	-----	-----	-----	-----	-----	-----	---

**Bordure en biais contrastante pour les bords de l'encolure et de l'emmanchure et nœud si la robe est faite en dentelle (facultatif).**

115,150cm\* - 0.6m

**Note:** S'il vous plaît, reportez-vous aux instructions de couture pour les **MESURES DES VÊTEMENTS FINI**.

\*avec sens \*\*sans sens



1



2



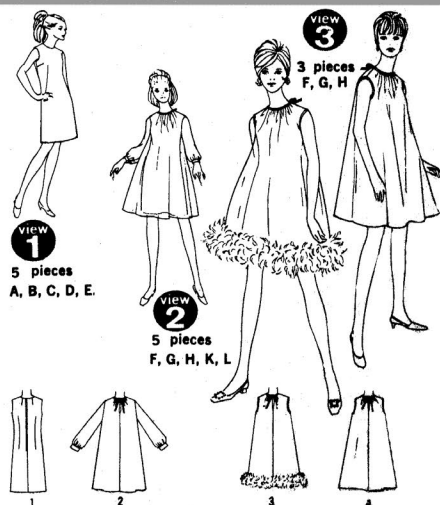
3



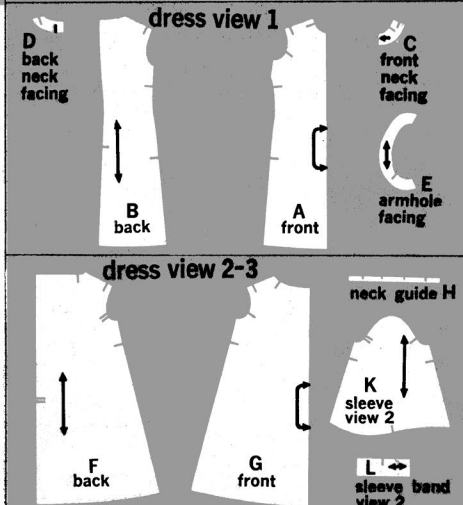
3

# Simplicity 7340

## cutting and sewing directions



## select your pattern pieces according to the view you have chosen 10 pieces given.



## How to use your Simplicity Pattern

Read all directions carefully before beginning to work

### 1. Prepare your pattern

Select the pattern pieces for the view you plan to make from the box to the left. Do not cut away margins.

This pattern is made to body measurements with ease allowed for style, fit and comfort. Check your back waist and dress length. If necessary, alter the pattern before placing it on fabric. Lengthening and shortening lines are indicated on pattern.

**TO LENGTHEN:** Cut pattern between printed lines. Place paper underneath. Spread pattern the necessary amount and pin to paper.

**TO SHORTEN:** At the printed line, pin a pleat half the amount to be shortened. (i.e.  $\frac{1}{2}$ " deep to shorten 1".)

See Simplicity Sewing Book for other pattern alterations.

### 2. Prepare your fabric

Press fabric. Unless fabric is pre-shrunk, shrink before cutting.

**STRAIGHTEN ENDS:** Clip one selvage and tear fabric or pull a crosswise thread and cut across fabric.

**STRAIGHTEN UNEVEN GRAIN:** Pull fabric on the bias in opposite direction until crosswise threads are straight and squared with selvages. This cannot be done on permanent finish fabrics.

### 3. Know your pattern markings

**STRAIGHT GRAIN:** Place an even distance from selvage or a straight thread.

**FOLD GRAIN:** Place on fold of fabric.

**CUTTING LINE**

**LENGTHENING AND SHORTENING LINES**

**STITCHING LINES:** For darts, seams, etc.

**SEAM ALLOWANCE:**  $\frac{5}{8}$ " unless otherwise stated.

**NOTCHES:** Blocked in for easier cutting; match notches with same numbers.

### 4. Laying out and cutting your pattern

Circle cutting layout for View, Size and Fabric width.

**FOR DOUBLE THICKNESS:** Fold fabric with RIGHT side INSIDE and place pattern on WRONG side of fabric.

**FOR SINGLE THICKNESS:** Place pattern on RIGHT side of fabric.

**FOR NAP OR ONE WAY DESIGN FABRICS:** Use "with nap" cutting layout.

Before cutting, place all pattern pieces on fabric, following cutting layouts. Margins may be overlapped when placing pattern on fabric. When duplicate pattern pieces are cut separately, the second piece is reversed and shown as a white outline.

Cut thru pattern and fabric on cutting lines; cut notches out from cutting lines. Margins will fall away as you cut.

### 5. Mark your fabric

Before removing pattern, transfer markings to WRONG side of fabric with tracing wheel and dressmaker's tracing paper.

**FOR SINGLE THICKNESS:** Place one sheet of tracing paper face up under WRONG side of fabric.

**FOR DOUBLE THICKNESS:** Place one sheet of tracing paper face up under fabric; place another sheet face down under pattern.

See Simplicity Sewing Book for "chalk-marking" and Tailor's-tacks.

Do not remove pattern from fabric until you are ready to sew.

### 6. Sewing your garment

**READ DIRECTIONS** on pattern pieces as you work.

**STAY-STITCH:** Machine-stitch thru single thickness of fabric to prevent stretching of bias or curved edges—done on seam line or  $\frac{1}{8}$ " from seam line within seam allowance. Stay-stitching is shown only the first time a section of garment is illustrated.

**PIN or BASTE SEAMS:** Match notch 1 to 1, 2 to 2, etc. (Baste by hand or machine using a long stitch.)

**STITCH SEAMS:** In direction shown by arrows on pattern.

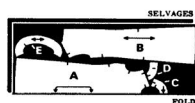
**PRESS SEAMS:** Open, unless otherwise stated. See Simplicity Sewing Book for additional sewing details.

## cutting layouts

Black area represents fabric

### VIEW 1 dress

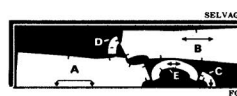
44" 45" fabric without nap  
sizes 8, 10, 12  
40" 41" fabric without nap  
size 8



44" 45" fabric without nap  
sizes 14, 16  
40" 41" fabric without nap  
size 10

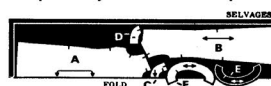


40" 41" fabric without nap  
sizes 12, 14, 16  
35" 36" fabric without nap  
size 8

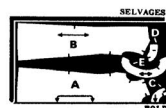


NOTE: Cut out all pieces except E; then open out fabric and on single thickness, cut 2 by E on right side of fabric in position shown.

35" 36" fabric without nap  
sizes 10, 12,  
14, 16



54" fabric without nap  
all sizes



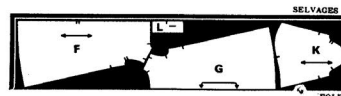
### VIEW 2 dress

NOTE: BIAS BINDING FOR NECK EDGE - Cut a bias strip of remnants, 2-3/8" wide and the length of guide H. (For lace, cut bias of plain fabric.)

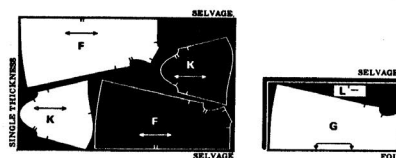
BIAS FOR BOW - Cut a bias strip of remnants, 1-1/2" wide and 24" long.

(For lace, cut bow of plain fabric.)

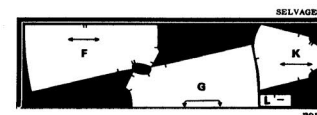
44" 45" fabric without nap  
sizes 8, 10, 12



44" 45" fabric without nap  
sizes 14, 16



54" fabric without nap  
all sizes



### VIEW 3 dress

NOTE: BIAS BINDING FOR NECK AND ARMHOLE EDGES - Cut bias strips of remnants, 2-3/8" wide as follows:

One strip the length of guide H for neck edge.

Two strips the measurement of armhole edges.

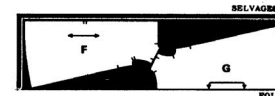
Piece bias when necessary, allowing for seam.

(For lace cut all bias of plain fabric.)

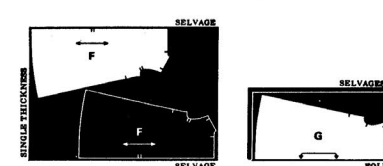
BIAS FOR BOW - Cut a bias strip of remnants, 1-1/2" wide and 24" long.

(For lace, cut bow of plain fabric.)

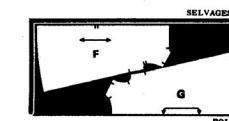
44" 45" fabric without nap  
sizes 8, 10, 12



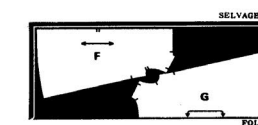
44" 45" fabric without nap  
sizes 14, 16



60" fabric without nap  
sizes 8, 10, 12



60" fabric without nap  
sizes 14, 16



## 7340 sewing directions

Shaded area is right side of fabric

NOTE: Stitch  $\frac{5}{8}$ " seams, unless otherwise stated, matching same numbered notches.

UNIT 1  
frontview  
1  
dress

STAY-STITCHING

Make darts; press down.

UNIT 2  
back

STAY-STITCHING

Make darts.

Clip waistline darts.

Press all darts toward center.

Stitch center back seam to notch.

**Zipper** - See instructions with zipper, placing tab end  $\frac{1}{2}$ " below neckline seam line.

shoulder seams

Stitch front to back at shoulder seams.

UNIT 3  
neck facings and side seams

STAY-STITCHING

a-Stitch shoulder seams of facings.  
Stitch  $\frac{1}{4}$ " from un-notched edge.

Press under edge along stitching and stitch.

b-With RIGHT sides together, pin facing to neck edge, matching centers and seams. (Facing extends  $\frac{5}{8}$ " beyond LEFT back edge and  $\frac{1}{2}$ " beyond RIGHT back edge.)

Stitch neck edge. Trim seam; clip curves.

Press facing out; press seam toward facing. Facing side up, understitch close to seam line thru facing and seam.

c-Press facing to INSIDE, pressing under and slip-stitching center back edges, as shown. Tack facing to shoulder seams.

Sew hook and eye at neck edge.

Stitch front to back at side seams.

UNIT 4  
armhole facings

a-Stitch  $\frac{1}{4}$ " from un-notched edge of facing. Press under edge along stitching and stitch.

b-Stitch ends, matching small dots ●.

c-With RIGHT sides together, stitch facing to armhole edge, matching seams at underarm. Trim seam; clip curves. Press facing out; press seam toward facing. Facing side up, understitch close to seam line thru facing and seam.

d-Press facing to INSIDE; slip-stitch.

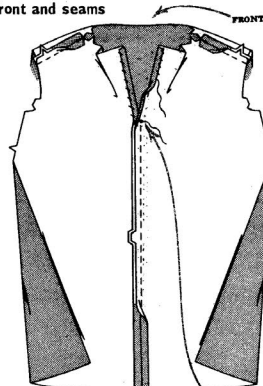
hem

Mark length. Press up hem along marking. Mark depth of hem; trim evenly. Finish raw edge with bias seam binding. Slip-stitch hem, easing in fullness.

view  
2

dress

NOTE: If this dress is made of lace or sheer fabric, dress view 1 may be worn as an underdress.

UNIT 1  
back, front and seams

Stitch center back seam to medium dot ●. Press under  $\frac{1}{4}$ " on back opening edges. Press opening edges to INSIDE along seam line; slip-stitch. Stitch front to back at shoulder seams, matching small dots ●.

gathers

To gather neck edge, stitch along seam line and  $\frac{1}{4}$ " below seam line, using a long machine-stitch.

UNIT 2  
neck edge

NOTE: Cut 1 by H of heavy paper. Transfer markings.

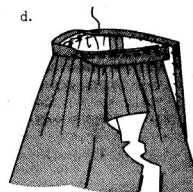
a-Pin neck edge to guide, matching centers and small dots ●. Adjust gathers to fit; fasten threads.

Stitch neck edge along seam line, stitching thru paper guide. Tear guide away.

b-Trim away  $\frac{1}{2}$ " from neck edge.

c-Fold bias for binding in half lengthwise with WRONG sides together.

Printed in U.S.A.  
© Copyright 1967 by Simplicity Pattern Co. Inc.



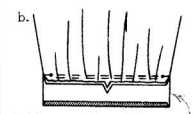
d-On OUTSIDE, pin bias to neck edge, having raw edges even, stretching bias along curves, extending ends at back opening edges, as shown. Stitch in  $\frac{3}{8}$ " seam.

side seams

Stitch front to back at side seams.

UNIT 3  
sleeves and sleevebands

a-To ease top of sleeve between notches and to gather lower edge between small dots ●, stitch along seam line and  $\frac{1}{4}$ " INSIDE seam line, using a long machine-stitch.



b-Press under  $\frac{5}{8}$ " on unnotched edge of sleeveband; trim to  $\frac{1}{4}$ ". With RIGHT sides together, pin sleeve to band, matching small dots ●. Adjust gathers to fit. Stitch. Trim seam; press toward band.

c-Stitch underarm seam. On INSIDE, slip-stitch band over seam.

stitching sleeve unit to dress

With RIGHT sides together, pin sleeve in armhole with center small dot ● at shoulder seam, matching underarm seams and remaining small dots ●. Pull up machine-stitching to fit.

Baste, easing in fullness. Stitch. Stitch  $\frac{1}{8}$ " from first stitching. Trim seam close to stitching. Press seam toward sleeve, shrinking out fullness.

hem for sheer or lace fabrics

Mark length. Trim evenly, allowing  $\frac{5}{8}$ " for hem.

For sheer fabric, narrowly hem lower edge.

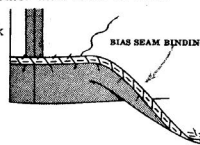
(For lace dress, horsehair may be used to finish lower edge).



hem for fabrics other than sheer or lace

Mark length. Press up hem along marking. Mark depth of hem; trim evenly.

To ease in fullness, stitch  $\frac{1}{4}$ " from raw edge, using a long machine-stitch. Pull up stitching so that hem will lie flat. Press shrinking out fullness. Stitch one edge of bias seam binding  $\frac{1}{4}$ " over raw edge (or press under edge along stitching). Slip-stitch hem.



bow

a-Fold bias for bow in half lengthwise with WRONG sides together. Stitch  $\frac{3}{8}$ " from fold, using a longer machine-stitch, stretching bias while stitching. With a needle, fasten a strong thread to one end.

b-Draw needle, eye forward thru fold, turning bias RIGHT side out. Turn in and slip-stitch ends. Tie bow and tack to RIGHT back neck edge. Sew hook and eye at neck edge.



3

dress

NOTE: The ostrich feather trim is optional. Prepare dress same as for view 2, see note and units 1 and 2.

UNIT 3  
armhole edges

a-Stitch armhole edges along seam line.

Trim away  $\frac{1}{2}$ " from armhole edge.

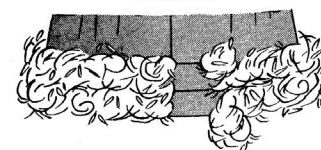
b-Fold bias for binding in half lengthwise with WRONG sides together.

On OUTSIDE, pin bias to armhole edge, having raw edges even, stretching bias along curves, turning and lapping one end at side seam.

Stitch in  $\frac{3}{8}$ " seam.

Turn bias over edge to INSIDE; slip-stitch over seam. For hem and bow, see dress view 2.

feather trim



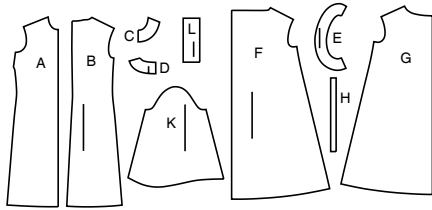
On OUTSIDE, slip-stitch feather trim along solid lines or make thread loops at 6" or 8" intervals and slip feather trim thru loops.

# Simplicity®

Thank you for purchasing this Simplicity pattern.  
We made every effort to provide you with a high quality product.

## SUPPLEMENTAL CUTTING LAYOUTS

### 10 PIECES



- A Dress Front-View 1  
B Dress Back-View 1  
C Front Neck Facing-View 1  
D Back Neck Facing-View 1  
E Armhole Facing-View 1  
F Dress Back-View 2,3  
G Dress Front-View 2,3  
H Neck Guide-View 2,3  
K Sleeve-View 2  
L Sleeve Band-View 2

Sizes	8	10	12	14	16	18	20	22	24	26
European	34	36	38	40	42	44	46	48	50	52

#### FINISHED GARMENT MEASUREMENTS (Includes Design and Wearing Ease)

Dress 1 Bust	34	35	36½	38½	40½	42½	44½	46½	48½	50½ Ins.
Dress 2,3 Bust	53	54	55½	57½	59½	61½	63½	65½	67½	69½ "
Dress 1 Waist	30	31	32½	34½	36½	38½	40½	42½	44½	46½ "
Dress 2,3 Waist	59	60	61½	63½	65½	67½	69½	71½	73½	75½ "
Dress 1 Hip	37	38	39½	41½	43½	45½	47½	49½	51½	53½ "
Width, lower edge										
Dress - View 1	43	44	45½	47½	49½	51½	53½	55½	57½	59½ Ins.
Dress - Views 2,3	80½	81½	83	85	87	89	91	93	95	97 "
Finished back length from base of neck										
Dress - View 1	38½	39	39½	39½	39½	40	40½	40½	40½	41 Ins.
Dress - Views 2,3	39½	39½	39½	40	40½	40½	40½	41	41½	41½ "



www.simplicity.com



info@simplicity.com



1-888-588-2700

## General Directions

### The Pattern



**SYMBOLS**  
GRAIN LINE Place on straight grain of fabric parallel to selvage



PLACE SOLID LINE on fold of fabric.



CENTER FRONT OR BACK of garment.



NOTCHES



DOTS



CUTTING LINE



LENGTHEN OR SHORTEN LINES

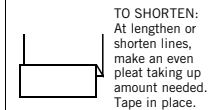
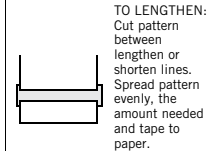
SEAM ALLOWANCE: 5/8" (1.5cm) unless otherwise stated is included but not printed on MULTI-SIZE PATTERNS.

Mark your size with colored felt tip pen.

See chart on tissue for how to use MULTI-SIZE PATTERNS.

### ADJUST IF NEEDED

Make adjustments before placing pattern on fabric.



When lengthen or shorten lines are not given, make adjustments at lower edge of pattern.

### Cutting/Marking

#### BEFORE CUTTING:

PRESS pattern pieces with a warm dry iron. PRE-SHRINK fabric by pre-washing washables or steam-pressing non-washables.

CIRCLE your cutting layout.

PIN pattern to fabric as shown in Cutting Layouts.

• FOR DOUBLE THICKNESS: Fold fabric with RIGHT sides together.

• FOR SINGLE THICKNESS: Place fabric RIGHT side up.

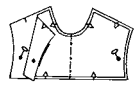
• FOR PILE, SHADED OR ONE WAY DESIGN FABRICS: Use "with nap" layouts

#### AFTER CUTTING:

Transfer markings to WRONG side of fabric before removing pattern. Use pin and chalk method or dressmaker's tracing paper and wheel.

#### To Quick Mark:

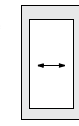
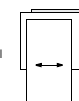
- Snip edge of fabric to mark notches, ends of fold lines and center lines.
- Pin mark dots.



### SPECIAL CUTTING NOTES

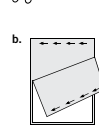
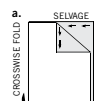
★ If layout shows a piece extending past fold, cut out all pieces except piece that extends.

Open out fabric to single thickness. Cut extending piece on RIGHT side of fabric in position shown.

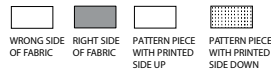


✱ Mark small arrows along both selvages indicating direction of nap or design. Fold fabric crosswise with RIGHT sides together, and cut along fold (a).

Turn one fabric layer around so arrows on both layers go in the same direction. Place RIGHT sides together (b).



## Cutting Layouts

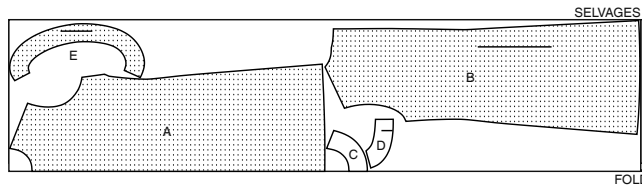


POSITION OF PATTERN PIECES MAY VARY SLIGHTLY ACCORDING TO YOUR PATTERN SIZE

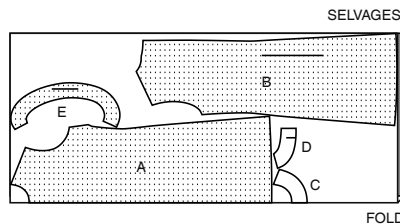
### DRESS 1

USE PIECES A B C D E

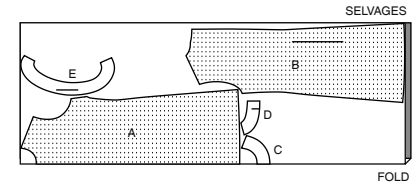
45" (115CM)  
WITH NAP  
ALL SIZES



60" (150CM)  
WITH NAP  
SIZES 8 10 12 14 16 18 20 22 24



60" (150CM)  
WITH NAP  
SIZE 26



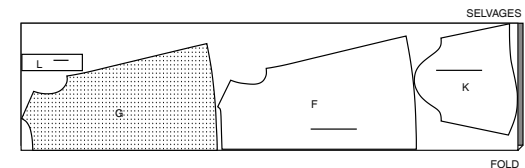
### DRESS 2

USE PIECES F G K L

**NOTE:**BIAS BINDING FOR NECK EDGE-Cut a bias strip of remnant, 2 3/8" ( 6.3cm) wide and the length of guide H. (For lace, cut bias of plain fabric.)

**BIAS FOR BOW:** Cut a bias strip of remnant, 1 1/2" (3.8cm) wide and 24" (61cm) long. (For lace, cut bias of plain fabric.)

60" (150CM) WITH NAP / ALL SIZES



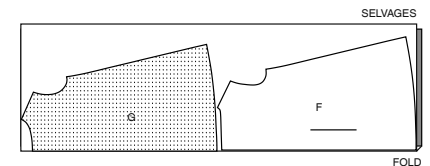
### DRESS 3

USE PIECES F G

**NOTE:**BIAS BINDING FOR NECK AND ARMHOLE EDGES-Cut a bias strip of remnant, 2 3/8" ( 6.3cm) wide as follows: One strip the length of guide H for neck edge. Two strips the measurement of Armhole edges. Piece bias when necessary, allowing for seam. (For lace, cut all bias of plain fabric.)

**BIAS FOR BOW:-** Cut a bias strip of remnant, 1 1/2" (3.8cm) wide and 24" (61cm) long. (For lace, cut bias of plain fabric.)

60" (150CM) WITH NAP / ALL SIZES





# Congrats!

You've completed your sewing adventure

---

## SHARE YOUR LOOK



Post your pattern and tag us  
**@simplicity\_creative\_group** and **#simplicitypatterns**  
for a chance to be featured on our social media.

Look for more PDF patterns at [simplicity.com](https://www.simplicity.com)

Have a question or need help with your sewing project call us at  
1-888-588-2700



Simplicity ©2023 a division of IG Design Group Americas Inc. • Atlanta, GA 30342 USA [www.thedesigngroup.com](https://www.thedesigngroup.com) • All Rights Reserved. [www.simplicity.com](https://www.simplicity.com) • Made in the U.S.A. Fabriqué aux États-Unis.

To be used for individual private home use only and not for commercial or manufacturing purposes. • A usage privé seulement et non à des fins commerciales ou de production en série. • Para uso privado solamente, no se puede utilizar con propósitos de comercialización o de producción en serie.