

S9847

**Simplicity**

1950s Vintage

SIMPLE TO MAKE



Designed and printed in USA.

Easy

**MISSES' COAT IN THREE LENGTHS**

**Suggested Fabrics:** Blends, Cottons, Faille, Linen, Moire, Pique, Rayons, Silks, Taffeta, Wools. **Views 2 and 3** also in Corduroy, Fleece, Shetland, Velveteen. **Lining:** Lining Fabric. **Interfacing:** Lightweight Sew-in.

**Notions:** Rounded shoulder pads, bias seam binding. **Also for View 2:** Three buttons.

<b>Sizes</b>	8	10	12	14	16	18	20	22	24	26
<b>European</b>	34	36	38	40	42	44	46	48	50	52

**BODY MEASUREMENTS: Select pattern size based on body measurements**

<b>Bust</b>	31½	32½	34	36	38	40	42	44	46	48	Ins.
<b>Waist</b>	24	25	26½	28	30	32	34	37	39	41½	"
<b>Hip-9" below waist</b>	33½	34½	36	38	40	42	44	46	48	50	"
<b>Back-neck to waist</b>	15¾	16	16¼	16½	16¾	17	17¼	17½	17¾	17¾	"

<b>Coat 1</b>	45**	4%	4%	4%	4%	4%	4%	4%	5	5	5	Yds.
	60**	3%	3%	3¼	3%	3½	3%	3¾	3%	4	4	"
<b>Lining</b>	45***	3%	3%	3%	3½	3%	3%	4	4	4%	4%	"
<b>Interfacing</b>	20" - 1½ yds.											
<b>Coat 2</b>	45**	3%	3%	3%	3%	3%	3%	3%	4	4	4	Yds.
	60**	2%	2%	2¼	2%	2%	2%	2%	3	3%	3%	"
<b>Lining</b>	45***	2½	2½	2½	2¾	2¾	2%	2%	3	3	3	"
<b>Interfacing</b>	20" - 1¾ yds.											
<b>Coat 3</b>	45**	3%	3¼	3¼	3¼	3%	3%	3%	3%	3%	3½	Yds.
	60**	2%	2%	2¼	2¼	2%	2%	2%	2½	2½	2½	"
<b>Lining</b>	45***	1%	2	2	2%	2¼	2%	2%	2%	2%	2%	"
<b>Interfacing</b>	20" - 1¾ yds.											

**NOTE:** Please refer to the sewing instructions for **FINISHED GARMENT MEASUREMENTS.**

\*with nap \*\*without nap

Facile

**MANTEAU EN TROIS LONGUEURS POUR JEUNES FEMMES**

**Tissus Conseillés:** Tissus mélangés, Cotons, Faille, Toile de lin, Mohair, Piqué, Rayonnes, Soies, Taffetas, Laines. **Modèles 2 et 3** aussi en Velours côtelé, Molleton, Shetland, Velours de coton. **Doubleure :** Tissus à doubleure. **Entoilage :** léger à coudre.

**Mercerie:** épaulettes arrondies, extra-fort de biais. **Aussi pour le Modèle 2 :** 3 boutons.

<b>Tailles</b>	8	10	12	14	16	18	20	22	24	26
<b>Françaises</b>	36	38	40	42	44	46	48	50	52	54
<b>Européen</b>	34	36	38	40	42	44	46	48	50	52

**MESURES DU CORPS: Choisissez la taille du patron basée sur les mesures du corps**

<b>Poitrine</b>	80	83	87	92	97	102	107	112	117	122	cm
<b>Taille</b>	61	64	67	71	76	81	87	94	99	106	"

**Hanches (23cm au-dessous de la taille)**

	85	88	92	97	102	107	112	117	122	127	cm
<b>Dos du cou à la taille</b>	40	40.5	41.5	42	42.5	43	44	44	44.5	44.5	"

<b>Manteau 1</b>	115cm*	4.2	4.2	4.2	4.2	4.2	4.2	4.3	4.5	4.6	4.6	m
	150cm*	2.9	2.9	3.0	3.1	3.2	3.2	3.2	3.4	3.5	3.7	"
<b>Doubleure</b>	115cm**	3.0	3.0	3.1	3.1	3.5	3.5	3.7	3.7	3.8	"	
<b>Entoilage</b>	51cm - 1.5m											
<b>Manteau 2</b>	115cm*	3.4	3.4	3.5	3.5	3.5	3.5	3.5	3.7	3.7	3.7	m
	150cm*	2.2	2.2	2.5	2.5	2.6	2.6	2.6	2.7	2.9	3.1	"
<b>Doubleure</b>	115cm**	2.3	2.3	2.4	2.5	2.5	2.6	2.6	2.7	2.7	"	
<b>Entoilage</b>	51cm - 1.3m											
<b>Manteau 3</b>	115cm*	2.9	3.0	3.0	3.0	3.0	3.1	3.1	3.1	3.1	3.1	m
	150cm*	1.8	1.9	2.1	2.1	2.1	2.2	2.2	2.3	2.3	2.3	"
<b>Doubleure</b>	115cm**	1.7	1.8	1.8	1.9	2.1	2.1	2.2	2.2	2.3	2.3	"
<b>Entoilage</b>	51cm - 1.0m											

**NOTE:** S'il vous plaît, reportez-vous aux instructions de couture pour les **MESURES DES VÊTEMENTS FINI.**

\*avec sens \*\*sans sens



1



2





3

**AUTHENTIC VINTAGE PATTERN REPRODUCTION**

INCLUDES ADDITIONAL SIZE OPTIONS AND CUTTING LAYOUTS

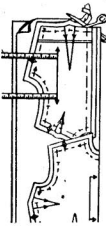
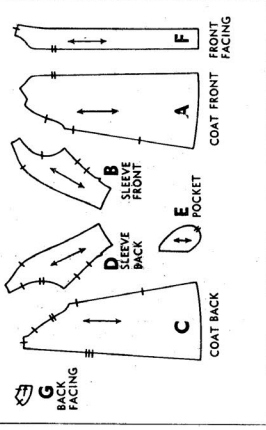
**Follow This Step-By-Step Procedure in the Numbered Order**

- Select the Pattern Pieces** for the view you are making. Return other pieces to envelope.
- Press the Pattern Pieces.**
- Compare Your Measurements** with the pattern.
- Alterations.** If necessary, should be made in the pattern before placing on fabric. **(Caution:** In addition to body measurements, ease is allowed in the pattern for garment style and to accommodate fitting. Pattern pieces allow where to make simple alterations such as:
  - To Shorten**  Create on printed line. Pin a pleat in pattern the required amount.
  - To Lengthen**  Cut pattern on printed line. Place paper underneath. Space pattern apart the necessary amount and pin to paper.
- For Children's Wear,** alter at lower edge except in shorts and slacks, etc., when catch needs alterations. Then alter above catch.
- See the **Simplicity Sewing Book** for other alterations.
- Prepare Fabric.** Press creases out of fabric. Unless fabric is pre-shrunk, sponge or shrink before cutting.
- To Straighten End.** Slip selvage and pull a crosswise thread. Cut on this line. Some fabrics may be straightened by tearing.

Study the pattern pieces and see cutting notes.

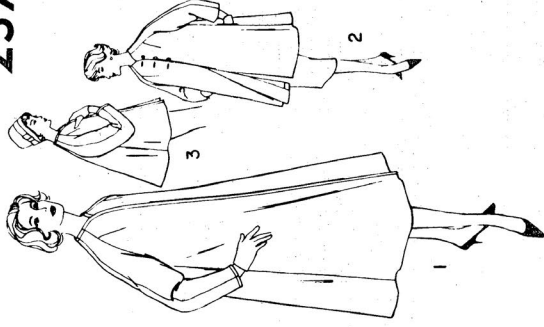
VIEW 1, 2 AND 3 A, B, C, D, E, F, G

7 PIECES GIVEN



**7 To Cut.** Do not trim margins off. Margins may be overlapped when placing pattern on fabric. Cut through pattern and fabric exactly on cutting line. Margins fall away as you cut.

**Simplicity primer**  
Guide for Cutting - Sewing - Detailed Dressmaking 2376

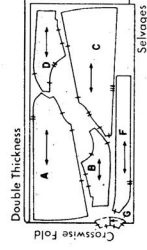


THE SIMPLICITY SEWING BOOK gives complete instructions and illustrations on all phases of sewing.

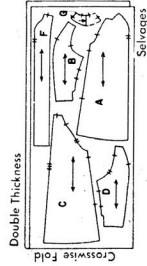
**Cutting Layouts**  
**View 1**

NOTE: POCKET FACINGS - Cut 4 straight strips of remnants each 2-1/2" wide and 11" long.

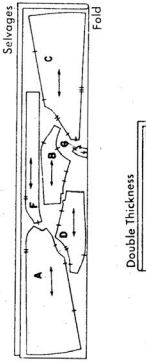
Sizes 12, 14, 16, 18 - 35" 36" Fabric Without Nap



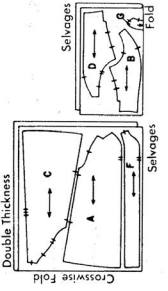
Size 20 - 35" 36" Fabric Without Nap



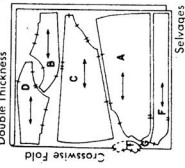
Sizes 12, 14, 16 - 44" 45" Fabric Without Nap



Sizes 18, 20 - 44" 45" Fabric Without Nap



All Sizes 54" Fabric Without Nap



**8 Mark Fabric.** Construction details must be marked on the fabric. Mark center front and back with a 1/4 inch clip at top and bottom.

**Tailor's Tacks.** Use long double

thread without knot. Take 2 small stitches thru pattern and both fabric layers, leaving long loop. Cut loop and remove pattern. Separate fabric, clip threads between fabric.

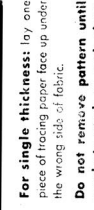


layers, leaving thread tuft on both. **Tracing Wheel and Dressmaker's Tracing Paper.** Markings should be made on wrong side of fabric. Use ruler to guide



straight lines; mark curves freehand. **For double fabric:** lay one piece of tracing paper face up under the wrong side of fabric.

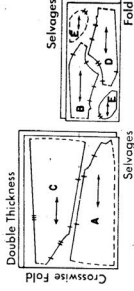
Do not remove pattern until ready to work on each piece.



**COAT LINING**

NOTE: LINING - After coat has been cut, trim away A, B, C and D along cutting lines. Trim away 1" from lower edges of A, B, C and D. Cut lining by altered patterns. POCKETS - Cut 4 by E.

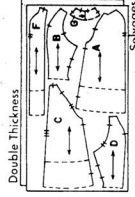
All Sizes 35" 36" 39" Fabric



**View 2-3**

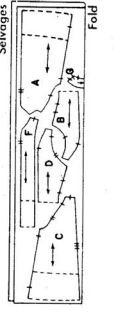
NOTE: POCKET FACINGS - Cut 4 straight strips of remnants each 2-1/2" wide and 11" long.

All Sizes 35" 36" Fabric With or Without Nap

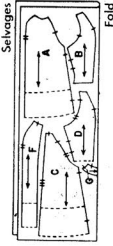


NOTE: When nap or one way design fabric is used, cut two pieces of fabric, then place right sides together with nap or design running in the same direction.

All Sizes 44" 45" Fabric Without Nap



All Sizes 54" Fabric With or Without Nap

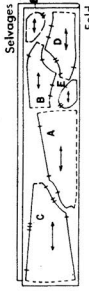


**View 2**

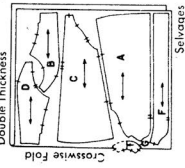
**COAT LINING**

NOTE: After coat has been cut, trim away A, B, C and D along cutting lines. Trim 1" from lower edges of A, B, C, and D. Cut lining by altered patterns. POCKETS - Cut 4 by E.

Sizes 12, 14, 16 - 39" Fabric



All Sizes 54" Fabric Without Nap

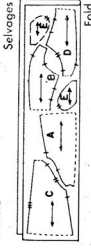


**View 3**

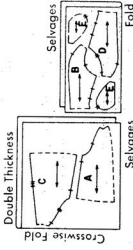
**COAT LINING**

NOTE: After coat has been cut, trim away A, B, C, and D along cutting lines. Trim 1" from lower edges of A, B, C and D. Cut lining by altered patterns. POCKETS - Cut 4 by E.

Sizes 12, 14, 16 - 35" 36" Fabric All Sizes - 39" Fabric



Sizes 18, 20 - 35" 36" Fabric

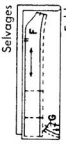


**View 1-2-3**

**INTERFACING**

NOTE: FRONT - Cut 2 by F less 2" at lower edge, plus 1/2" on long unattached edge. CUT 1 by G plus 1/2" on unattached edge. SLEEVE - Cut 2 bias strips each 2-1/2" wide and the measurement of lower edge of sleeves, plus 1".

All Sizes - 25" Fabric.



# 2376

## SEWING DIRECTIONS

1. **READ INSTRUCTIONS** printed on each pattern piece as you work.
2. **WORK IN UNITS** such as Coat Front And Sleeve Front, Coat Back and Pockets, etc.
3. **STAY-STITCH** off-grain curved or bias edges. Stay-stitching is a line of regular machine-stitching (in one thickness of fabric) close to the seam line, within the seam allowance.
4. **STAY-STITCHING** will be shown only the first time a section of the garment is illustrated.
5. **SEAM ALLOWANCE** is  $\frac{5}{8}$ " unless otherwise stated.
6. **TO JOIN SEAMS**, match notches with same numbers, 1 to 1, 2 to 2. Continue in this order.
7. **STITCHING DIRECTIONS** (are shown on your printed pattern.) Press each seam before it is joined to another. Press in same direction as it was stitched.
8. **FITTING:** Try on garment, make adjustments if necessary.
9. **NOTE:** We suggest machine-basting. To machine-baste, use longest machine-stitch.

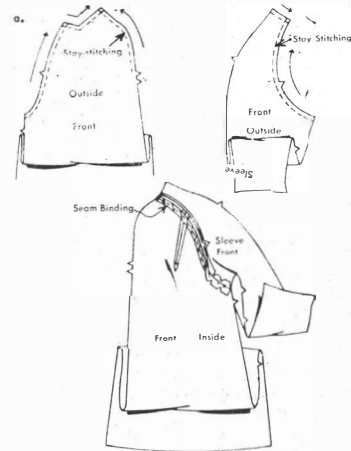
## SUGGESTED SEAM FINISHES

- a--Pink seams.
- b--For enclosed seam, trim seam, clipping corners and curves.

## VIEW 1, 2 AND 3

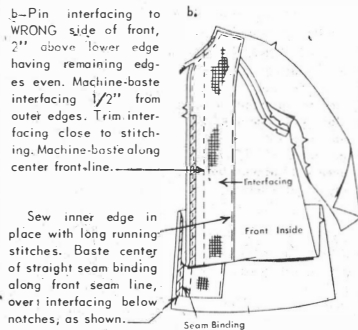
NOTE: Top-stitching on coat is optional.

### UNIT 1 - COAT FRONT AND SLEEVE FRONT



- a--To make dart in coat front, on **INSIDE**, fold along solid line. Stitch along broken line. Trim dart and press open.
- Clip armhole edge of sleeve front to stay-stitching.
- With **RIGHT** sides together, pin sleeve front to coat front, matching small dots ●, easing sleeve to fit below notch. Baste.
- Baste center of straight seam binding along seam line. Stitch seam, clip curves. Press seam open.

## FRONT INTERFACING



- b--Pin interfacing to **WRONG** side of front, 2" above lower edge having remaining edges even. Machine-baste interfacing  $\frac{1}{2}$ " from outer edges. Trim interfacing close to stitching. Machine-baste along center front-line.

Sew inner edge in place with long running stitches. Baste center of straight seam binding along front seam line, over interfacing below notches, as shown.

## BOUND BUTTONHOLES

NOTE: For View 1, omit buttonholes. For View 2, make buttonholes at all buttonhole markings. For View 3, omit buttonholes.

Make bound buttonholes in **RIGHT** front. If pattern has been altered, respace buttonhole markings. Make bound buttonholes in **RIGHT** front as follows: (Worked or machine-made buttonholes may be made when garment is finished.)

- a--On **OUTSIDE** of fabric, mark with basting the solid lines which indicate buttonholes in **RIGHT** front. Make vertical basting lines at each end of first marking.
- b--Cut a straight strip of garment fabric on lengthwise grain (or a bias strip),  $1\frac{1}{2}$ " wide and as long as the total length of all buttonhole markings, plus 1" for each buttonhole. Press exactly  $\frac{1}{2}$ " on long edges to **WRONG** SIDE. (Do not lap edges).

Stitch  $\frac{1}{8}$ " tuck from each fold. Cut into strips each  $\frac{1}{4}$ " longer than buttonholes.

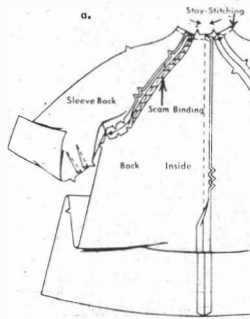
- c--With **RIGHT** sides together, (raw edges up) place center of strip over buttonhole marking, extending ends evenly, as shown. Baste thru each tuck the exact length of buttonholes. Stitch over basting; fasten threads at ends.
- d--On **WRONG** side, slash thru all thicknesses along center to within  $\frac{1}{4}$ " of ends. Clip diagonally to corners.

- e--Draw strip and the clipped corners to the **WRONG** side. Turn seam away from opening; press. Stitch across ends, catching in clipped corners, as shown.

(After coat has been made finish underside of bound buttonholes as follows):

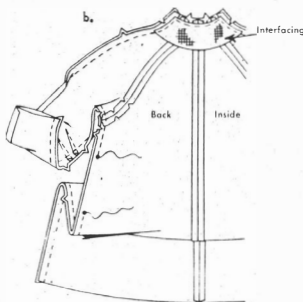
Baste facing around buttonholes. Slash facing and turn under and slip-stitch the edges to buttonholes.

## UNIT 2 - COAT BACK, SLEEVE BACK AND SEAMS



- a--Join center back seam of coat back sections. To make elbow darts in sleeve back, on **INSIDE**, fold along solid lines. Stitch along broken lines. Press darts toward lower edge of sleeve. Clip sleeve back to stay-stitching at armhole edge.
- With **RIGHT** sides together, pin sleeve back to coat back, matching small dots ●, easing coat to fit between notches and sleeve to fit below double notches. Baste. Baste center of straight seam binding along seam line. Stitch seam, clip curves. Press seam open.

## BACK INTERFACING



- b--Pin back interfacing to **WRONG** side of back, having outer edges even. Machine-baste  $\frac{1}{2}$ " from outer edges. Trim interfacing close to stitching.
- Join front unit to back unit at shoulder seams. Join entire underarm seam of coat and sleeve, leaving coat seam open between medium dots ●, as shown. Clip curves.

## UNIT 3 - POCKETS

- a--Press under  $\frac{1}{4}$ " on one long edge of strips for pocket facings. Pin **WRONG** side of pocket facings to **RIGHT** side of pocket sections, placing pressed edge along solid line in pocket. Stitch pressed edge in place. Trim facing even with pocket; baste raw edges together.
- b--On **INSIDE**, with the **RIGHT** sides together, pin pocket sections to side opening edges, matching medium dots ●. Stitch in a  $\frac{3}{8}$ " seam.
- c--With **RIGHT** sides together, stitch pocket sections together as shown. Press pocket toward front, pressing coat front along seam line.

## UNIT 4 - FRONT AND BACK FACINGS

- a--Join front facing to back facing at shoulder seams. With **RIGHT** sides together, pin facing to front and neck edges, matching centers and seams. Stitch. Trim seams; clip curves.
- b--Turn facing to **INSIDE**; press.

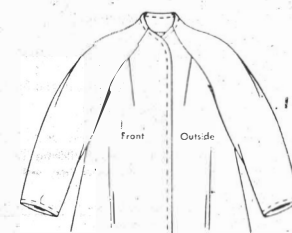
## LOWER EDGES OF SLEEVES

- On **INSIDE**, pin interfacing to sleeve, 1" above lower edge, lapping ends at underarm seam. Sew in place with long running stitches.
- Turn up lower edges of sleeve, forming hem; press. Sew hem to interfacing with long running stitches.

## HEM

- Mark length of coat. Open out front facings at lower edge.
- Turn up lower edge along marking. Mark depth of hem; trim evenly. Stitch one edge of bias seam binding  $\frac{1}{4}$ " over raw edge. Slip-stitch hem in place, easing in fullness.
- Turn front facing to **INSIDE**; press. Slip-stitch facing to hem. Sew raw edge of facing to hem with small stitches. Sew facing in place with long running stitches.

## FINISHING



- a--Top-stitch  $\frac{5}{8}$ " from front and neck and lower edges of sleeves. Press coat thoroughly. If shoulder pads are used, sew them in place.
- Lap **RIGHT** front over **LEFT**, matching centers. Sew buttons under buttonholes.

## UNIT 5 - LINING

- a--Make darts and join seams of lining same as for coat, stitching front shoulder dart to 2nd small dots ● from upper edge. (Do not trim dart). Press dart away from center.
- Press under 1" on lower edges of sleeves and  $\frac{5}{8}$ " on front and neck edges, clipping curves.

- b--With **WRONG** sides together, pin lining in coat, matching centers and seams. Slip sleeves in place. Tack seams together loosely. Pin lining over facing, matching centers and seams.
- Turn up lower edge of lining so that it is 1" above lower edge of coat. Turn under raw edge of lining hem and slip-stitch in place. Hand sew front and neck edge of lining to facing. Slip-stitch sleeve lining over sleeve hem, as shown.
- Tack lining to shoulder pads, if shoulder pads have been used. French-tack lower edge of coat to lining at seams.

# Simplicity

Thank you for purchasing this Simplicity pattern. We made every effort to provide you with a high quality product.

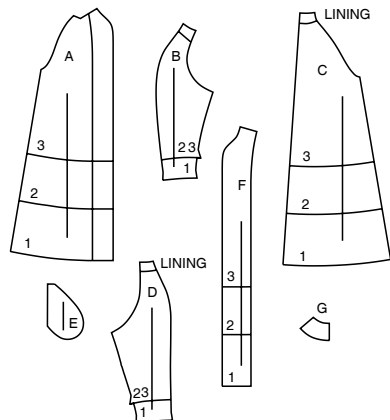
## SUPPLEMENTAL CUTTING LAYOUTS

Sizes	8	10	12	14	16	18	20	22	24	26
European	34	36	38	40	42	44	46	48	50	52

**FINISHED GARMENT MEASUREMENTS (Includes Design and Wearing Ease)**

	8	10	12	14	16	18	20	22	24	26
1,2,3 Bust	44½	45½	47	49	51	53	55	57	59	61
1,2,3 Waist	48	49	50½	52½	54½	56½	58½	60½	62½	64½
Width, lower edge										
Coat 1	71½	72½	74	76	78	80	82	84	86	88
Coat 2	63½	64½	66	68	70	72	74	76	78	80
Coat 3	56	57	58½	60½	62½	64½	66½	68½	70½	72½
Finished back length from base of neck										
Coat 1	45¼	45¼	45¾	46	46¼	46¾	46¾	47	47¼	47¼
Coat 2	35¼	35¼	35¾	36	36¼	36¾	36¾	37	37¼	37¼
Coat 3	25¼	26	26¼	26½	26¾	27	27¼	27¼	27¾	28

7 PIECES



A COAT FRONT  
 B SLEEVE FRONT  
 C COAT BACK  
 D SLEEVE BACK  
 E POCKET  
 F FRONT FACING  
 G BACK FACING

## General Directions

### The Pattern

**SYMBOLS**

- GRAIN LINE: Place on straight grain of fabric parallel to selvage
- PLACE SOLID LINE on fold of fabric.
- CENTER FRONT OR BACK of garment.
- NOTCHES
- DOTS
- CUTTING LINE
- LENGTHEN OR SHORTEN LINES

**ADJUST IF NEEDED**

Make adjustments before placing pattern on fabric.

**TO LENGTHEN:** Cut pattern between lengthen or shorten lines. Spread pattern evenly, the amount needed and tape to paper.

**TO SHORTEN:** At lengthen or shorten lines, make an even pleat taking up amount needed. Tape in place.

When lengthen or shorten lines are not given, make adjustments at lower edge of pattern.

**BEFORE CUTTING:**

PRESS pattern pieces with a warm dry iron. PRE-SHRINK fabric by pre-washing washables or steam-pressing non-washables.

CIRCLE your cutting layout.

PIN pattern to fabric as shown in Cutting Layouts.

- FOR DOUBLE THICKNESS: Fold fabric with RIGHT sides together.
- FOR SINGLE THICKNESS: Place fabric RIGHT side up.
- FOR PILE, SHADED OR ONE WAY DESIGN FABRICS: Use "with nap" layouts

**AFTER CUTTING:**

Transfer markings to WRONG side of fabric before removing pattern. Use pin and chalk method or dressmaker's tracing paper and wheel.

**To Quick Mark:**

- Snip edge of fabric to mark notches, ends of fold lines and center lines.
- Pin mark dots.

### Sewing

- SEW garment following Sewing Directions.
- PIN or machine-baste seams matching notches.
- STITCH 5/8" (1.5 cm) seams unless otherwise stated.
- PRESS seams open unless otherwise indicated clipping when necessary so seams will lie flat.
- TRIM seams to reduce bulk, as shown below.

### SPECIAL CUTTING NOTES

- If layout shows a piece extending past fold, cut out all pieces except piece that extends.
- Open out fabric to single thickness. Cut extending piece on RIGHT side of fabric in position shown.
- Mark small arrows along both selvages indicating direction of nap or design. Fold fabric crosswise with RIGHT sides together, and cut along fold (a).
- Turn one fabric layer around so arrows on both layers go in the same direction. Place RIGHT sides together (b).

## Cutting Layouts

WRONG SIDE OF FABRIC | RIGHT SIDE OF FABRIC | PATTERN PIECE WITH PRINTED SIDE UP | PATTERN PIECE WITH PRINTED SIDE DOWN | SEE SPECIAL CUTTING NOTES

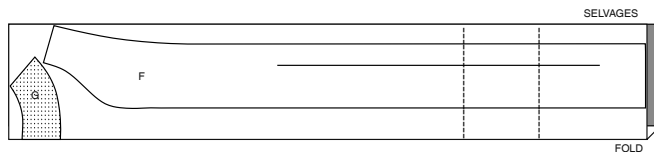
POSITION OF PATTERN PIECES MAY VARY SLIGHTLY ACCORDING TO YOUR PATTERN SIZE

NOTE: DASHED LINE SHOWN ON PATTERN PIECE IN CUTTING LAYOUT INDICATES CUTTING LINES FOR SHORTER LENGTHS

### INTERFACING 1 2 3

USE PIECES F G

20" (51CM)  
ALL SIZES



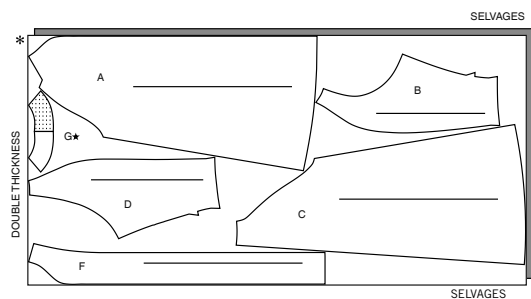
NOTE: POCKET FACINGS- CUT 4 STRAIGHT STRIPS OF REMNANTS EACH 2 ½" (6.6CM) WIDE AND 11" (28CM) LONG.

### COAT 1

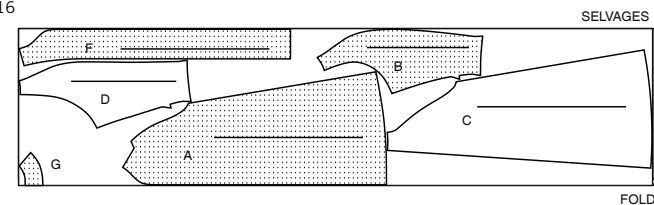
USE PIECES A B C D F G

45" (115CM)  
WITH NAP  
ALL SIZES

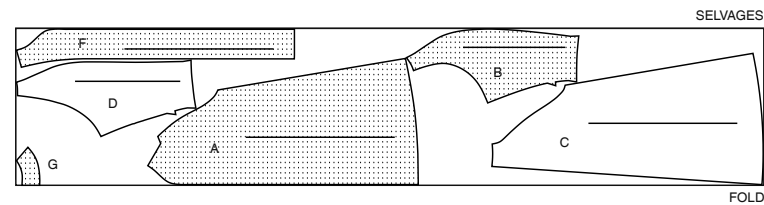
CUT ONE OF PIECE G



60" (150CM)  
WITH NAP  
SIZES 8 10 12 14 16



60" (150CM)  
WITH NAP  
SIZES 18 20 22 24 26



CUTTING LAYOUTS CONTINUED ON PAGE 2

# S9847

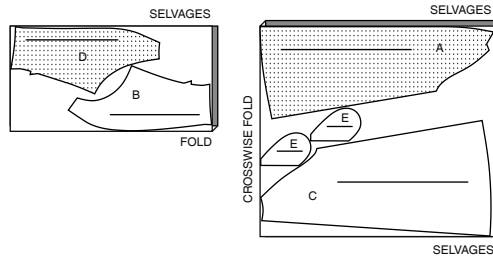
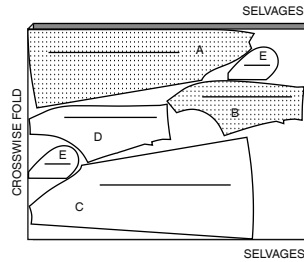
4 of 4

**NOTE:** BEFORE CUTTING LINING, FOLD UP 1" (2.5 CM) ON LOWER EDGE OF PIECES A, B, C AND D.

## LINING 1

USE PIECES A B C D E

45" (115CM)  
WITHOUT NAP  
SIZES 8 10 12 14



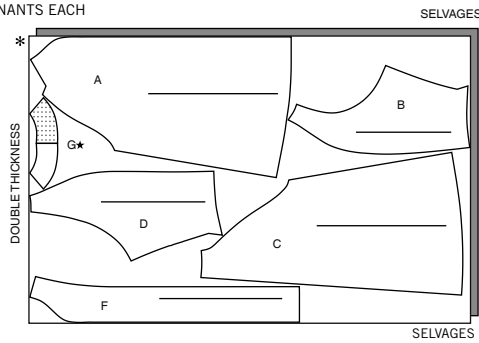
45" (115CM)  
WITHOUT NAP  
SIZES 16 18 20 22 24 26

**NOTE: POCKET FACINGS-** CUT 4 STRAIGHT STRIPS OF REMNANTS EACH 2 1/2" (6.6CM) WIDE AND 11" (28CM) LONG.

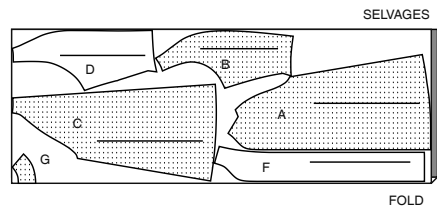
## COAT 2

USE PIECES A B C D F G

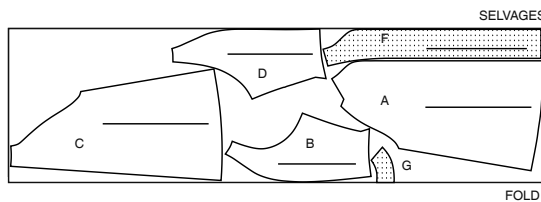
45" (115CM)  
WITH NAP  
ALL SIZES  
CUT ONE OF PIECE G



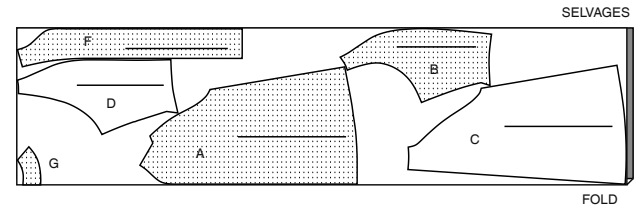
60" (150CM)  
WITH NAP  
SIZES 8 10



60" (150CM)  
WITH NAP  
SIZES 12 14 16 18 20 22



60" (150CM)  
WITH NAP  
SIZES 24 26

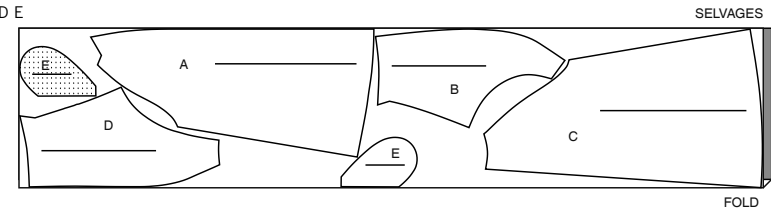


**NOTE:** BEFORE CUTTING LINING, FOLD UP 1" (2.5 CM) ON LOWER EDGE OF PIECES A, B, C AND D.

## LINING 2

USE PIECES A B C D E

45" (115CM)  
WITHOUT NAP  
ALL SIZES

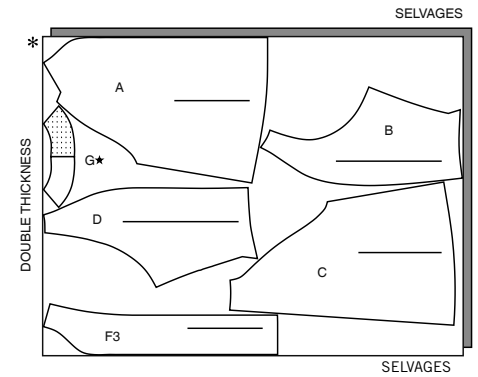


**NOTE: POCKET FACINGS-** CUT 4 STRAIGHT STRIPS OF REMNANTS EACH 2 1/2" (6.6CM) WIDE AND 11" (28CM) LONG.

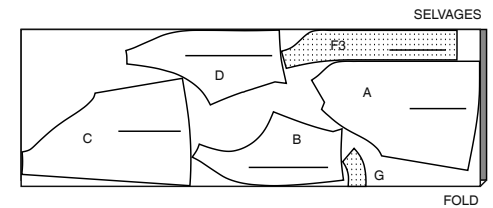
## COAT 3

USE PIECES A B C D F G

45" (115CM)  
WITH NAP  
ALL SIZES  
CUT ONE OF PIECE G



60" (150CM)  
WITH NAP  
ALL SIZES

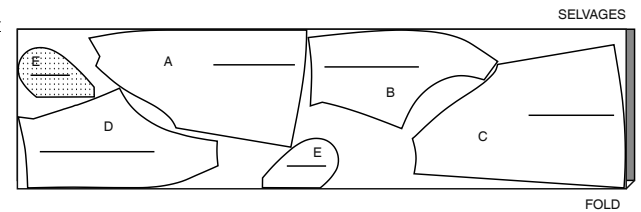


**NOTE:** BEFORE CUTTING LINING, FOLD UP 1" (2.5 CM) ON LOWER EDGE OF PIECES A, B, C AND D.

## LINING 3

USE PIECES A B C D E

45" (115CM) WITHOUT NAP  
ALL SIZES





# Congrats!

You've completed your sewing adventure

---

**SHARE  
YOUR** LOOK



Post your pattern and tag us  
**@simplicity\_creative\_group** and **#simplicitypatterns**  
for a chance to be featured on our social media.

Look for more PDF patterns at [simplicity.com](https://www.simplicity.com)

Have a question or need help with your sewing project call us at  
1-888-588-2700



Simplicity ©2023 a division of IG Design Group Americas Inc. • Atlanta, GA 30342 USA [www.thedesigngroup.com](https://www.thedesigngroup.com) • All Rights Reserved. [www.simplicity.com](https://www.simplicity.com) • Made in the U.S.A. Fabriqué aux États-Unis.

To be used for individual private home use only and not for commercial or manufacturing purposes. • A usage privé seulement et non à des fins commerciales ou de production en série. • Para uso privado solamente, no se puede utilizar con propósitos de comercialización o de producción en serie.