

S9843

Simplicity[®] COSTUMES



Shop all the pattern brands you love @

Simplicity[®].com

Average

MISSES' COSTUME

Suggested Fabrics: A,B,D,E: Gabardine, Linen/Linen Blends, Suiting Fabrics, Twill. C: Cotton/Cotton Blends. **Interfacing:** Lightweight Fusible.

Notions: A,B: Pair of 1/2" (1.3cm) shoulder pads. **Also for A:** Six 1" (2.5cm) buttons. **Also for B:** Six 1" (2.5cm) buttons. C: Ten 1/2" (1.3cm) buttons. D,E: One 7" (18cm) invisible zipper, one waistband closure.

Sizes	6	8	10	12	14	16	18	20	22	24		
European	32	34	36	38	40	42	44	46	48	50		
Jacket A	45**	2 1/2	2 3/4	2 3/4	2 1/2	2 1/2	3	3	3	3 1/2	3 1/2	Yds. m
	115cm*	2.4	2.4	2.5	2.6	2.6	2.7	2.7	2.7	2.9	2.9	
Interfacing	20" - 2 1/2 yds. (51cm - 2.2m)											
Jacket B	45**	3	3 1/2	3 1/2	3 1/2	3 1/4	3 1/4	3 1/4	3 1/4	3 1/2	3 1/2	Yds. m
	115cm*	2.7	2.9	2.9	2.9	3.0	3.0	3.0	3.1	3.1	3.1	
Interfacing	20" - 2 1/2 yds. (51cm - 2.3m)											
Top C	45**	2 1/2	2 1/2	2 1/2	2 1/2	2 1/2	2 1/2	2 1/2	2 1/2	2 1/2	Yds. m	
	115cm*	2.2	2.2	2.2	2.2	2.2	2.3	2.3	2.3	2.3		
Interfacing	20" - 1/2 yd. (51cm - 0.8m)											
Skirt D	45**	1 1/4	1 1/4	1 1/4	1 1/4	1 1/4	1 1/4	1 1/4	1 1/4	1 1/4	Yds. m	
	115cm*	1.5	1.5	1.5	1.5	1.5	1.5	1.6	1.6	1.6		
Interfacing D,E	20" - 1 1/4 yds. (51cm - 1.3m)											
Skirt E	45**	3	3	3	3 1/2	3 1/2	3 1/4	3 1/4	3 1/4	3 1/2	3 1/2	Yds. m
	115cm*	2.7	2.7	2.7	2.9	2.9	2.9	3.0	3.0	3.1	3.1	



A



B



C



D



E

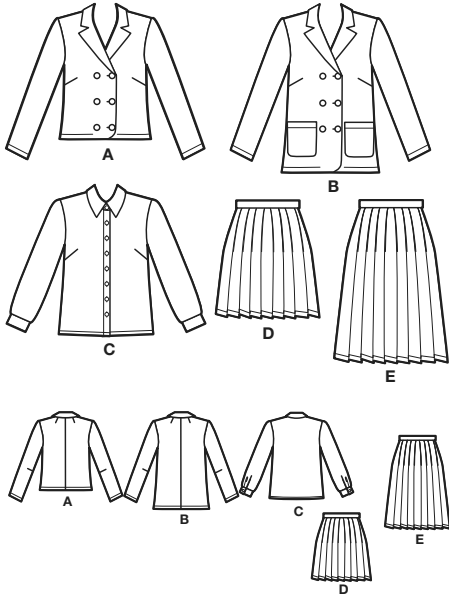
FINISHED GARMENT MEASUREMENTS (Includes Design and Wearing Ease)

A,B Bust	36 (91)	37 (94)	38 (97)	39 1/2 (100)	41 1/2 (105)	43 1/2 (110)	45 1/2 (116)	47 1/2 (121)	49 1/2 (126)	51 1/2 (131)	Ins. (cm)
C Bust	37 (94)	38 (97)	39 (99)	40 1/2 (103)	42 1/2 (108)	44 1/2 (113)	46 1/2 (118)	48 1/2 (123)	50 1/2 (128)	52 1/2 (133)	(cm)
A,B Waist	32 1/2 (83)	33 1/2 (85)	34 1/2 (88)	36 (91)	38 (97)	40 (102)	42 (107)	44 (112)	46 (117)	48 (122)	Ins. (cm)
C Waist	36 1/2 (93)	37 1/2 (95)	38 1/2 (98)	40 (102)	42 (107)	44 (112)	46 (117)	48 (122)	50 (127)	52 (132)	Ins. (cm)
D,E Hip	39 (99)	40 (102)	41 (104)	42 1/2 (108)	44 1/2 (113)	46 1/2 (118)	48 1/2 (123)	50 1/2 (128)	52 1/2 (133)	54 1/2 (138)	Ins. (cm)
Width, lower edge											
Jacket A	37 (94)	38 (97)	39 (99)	40 1/2 (103)	42 1/2 (108)	44 1/2 (113)	46 1/2 (118)	48 1/2 (123)	50 1/2 (128)	52 1/2 (133)	Ins. (cm)
Jacket B	39 (99)	40 (102)	41 (104)	42 1/2 (108)	44 1/2 (113)	46 1/2 (118)	48 1/2 (123)	50 1/2 (128)	52 1/2 (133)	54 1/2 (138)	Ins. (cm)
Top C	36 1/2 (93)	37 1/2 (95)	38 1/2 (98)	40 (102)	42 (107)	44 (112)	46 (117)	48 (122)	50 (127)	52 (132)	Ins. (cm)
Skirt D	48 (122)	49 (124)	50 (127)	51 1/2 (131)	53 1/2 (136)	55 1/2 (141)	57 1/2 (146)	59 1/2 (151)	61 1/2 (156)	63 1/2 (161)	Ins. (cm)
Skirt E	53 (135)	54 (137)	55 (140)	56 1/2 (144)	58 1/2 (149)	60 1/2 (154)	62 1/2 (159)	64 1/2 (164)	66 1/2 (169)	68 1/2 (174)	Ins. (cm)
Finished back length from base of neck											
Jacket A	22 (56)	22 1/4 (57)	22 1/2 (57)	22 3/4 (58)	23 (58)	23 1/4 (59)	23 1/2 (60)	23 3/4 (61)	24 (62)	24 1/4 (62)	Ins. (cm)
Jacket B	27 (56)	27 1/4 (57)	27 1/2 (57)	27 3/4 (58)	28 (58)	28 1/4 (59)	28 1/2 (60)	28 3/4 (61)	29 (62)	29 1/4 (62)	Ins. (cm)
Top C	25 1/4 (65)	25 3/4 (65)	26 (66)	26 1/4 (67)	26 1/2 (67)	26 3/4 (68)	27 (69)	27 1/4 (69)	27 1/2 (70)	27 3/4 (70)	Ins. (cm)
Finished back length from waist											
Skirt D	17 (43)	17 (43)	17 (43)	17 (43)	17 (43)	17 (43)	17 (43)	17 (43)	17 (43)	17 (43)	Ins. (cm)
Skirt E	24 (61)	24 (61)	24 (61)	24 (61)	24 (61)	24 (61)	24 (61)	24 (61)	24 (61)	24 (61)	Ins. (cm)

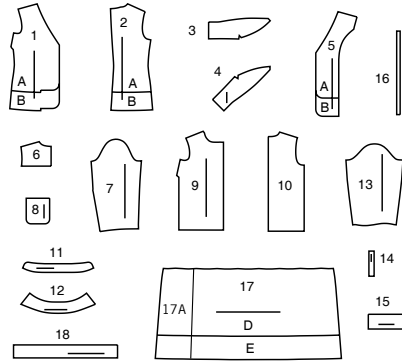
*with nap **without nap

Simplicity

Thank you for purchasing this Simplicity pattern. We made every effort to provide you with a high quality product.



16 PIECES



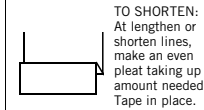
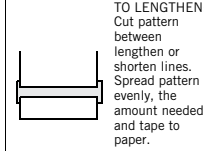
- 1 FRONT - A,B
- 2 BACK - A,B
- 3 UPPER COLLAR - A,B
- 4 UNDER COLLAR - A,B
- 5 FRONT FACING - A,B
- 6 BACK FACING -A,B
- 7 SLEEVE - A,B
- 8 POCKET - B
- 9 FRONT - C
- 10 BACK - C
- 11 COLLAR BAND - C
- 12 COLLAR - C
- 13 SLEEVE - C
- 14 CONTINUOUS LAP - C
- 15 CUFF - C
- 16 BUTTONHOLE GUIDE - C
- 17(17A) FRONT AND BACK - D,E
- 18 WAISTBAND - D,E

The Pattern

- SYMBOLS**
- GRAIN LINE Place on straight grain of fabric parallel to selvage
 - PLACE SOLID LINE on fold of fabric.
 - CENTER FRONT OR BACK of garment.
 - NOTCHES
 - DOTS
 - CUTTING LINE
 - LENGTHEN OR SHORTEN LINES

SEAM ALLOWANCE: 5/8" (1.5cm) unless otherwise stated is included but not printed on MULTI-SIZE PATTERNS. Mark your size with colored felt tip pen. See chart on tissue for how to use MULTI-SIZE PATTERNS.

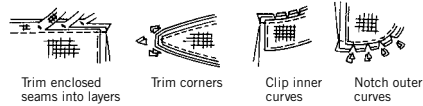
ADJUST IF NEEDED
Make adjustments before placing pattern on fabric.



When lengthen or shorten lines are not given, make adjustments at lower edge of pattern.

Sewing

- SEW garment following **Sewing Directions**.
- PIN or machine-baste seams matching notches.
- STITCH 5/8" (1.5 cm) seams unless otherwise stated.
- PRESS seams open unless otherwise indicated clipping when necessary so seams will lie flat.
- TRIM seams to reduce bulk, as shown below.



General Directions

Cutting/Marking

BEFORE CUTTING:
PRESS pattern pieces with a warm dry iron. PRE-SHRINK fabric by pre-washing washables or steam-pressing non-washables.

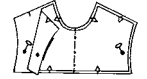
CIRCLE your cutting layout.
PIN pattern to fabric as shown in Cutting Layouts.

- FOR DOUBLE THICKNESS: Fold fabric with RIGHT sides together.
- FOR SINGLE THICKNESS: Place fabric RIGHT side up.
- FOR PILE, SHADED OR ONE WAY DESIGN FABRICS: Use "with nap" layouts

AFTER CUTTING:
Transfer markings to WRONG side of fabric before removing pattern. Use pin and chalk method or dressmaker's tracing paper and wheel.

To Quick Mark:

- Snip edge of fabric to mark notches, ends of fold lines and center lines.
- Pin mark dots.

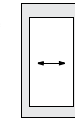


SPECIAL CUTTING NOTES

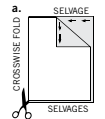
★ If layout shows a piece extending past fold, cut out all pieces except piece that extends.



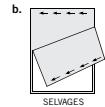
Open out fabric to single thickness. Cut extending piece on RIGHT side of fabric in position shown.



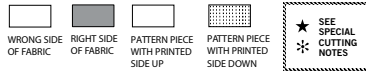
✱ Mark small arrows along both selvages indicating direction of nap or design. Fold fabric crosswise with RIGHT sides together, and cut along fold (a).



Turn one fabric layer around so arrows on both layers go in the same direction. Place RIGHT sides together (b).



Cutting Layouts

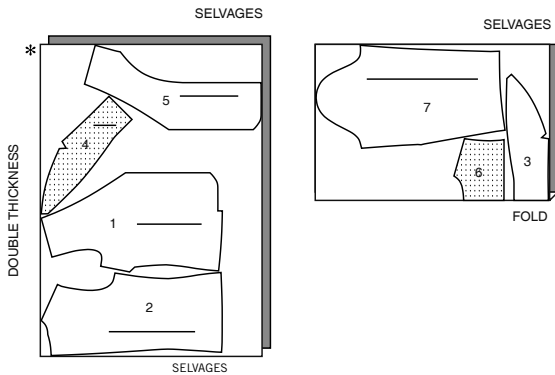


POSITION OF PATTERN PIECES MAY VARY SLIGHTLY ACCORDING TO YOUR PATTERN SIZE

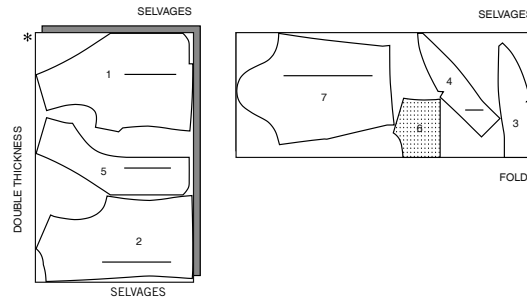
JACKET A

USE PIECES 1 2 3 4 5 6 7

45" (115CM) WITH NAP
SIZES 6 8 10



45" (115CM) WITH NAP
SIZES 12 14 16 18 20 22 24

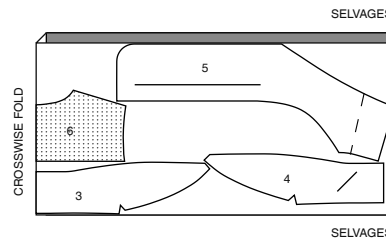


NOTE: DASHED LINE SHOWN ON PATTERN PIECES IN CUTTING LAYOUTS INDICATES CUTTING LINE FOR SHORTER LENGTH

INTERFACING A,B

USE PIECES 3 4 5 6

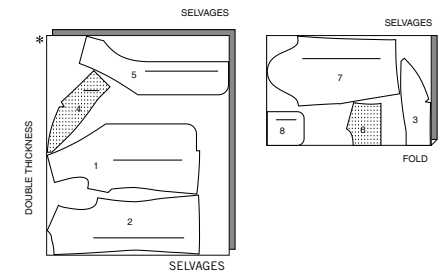
20" (51CM) ALL SIZES



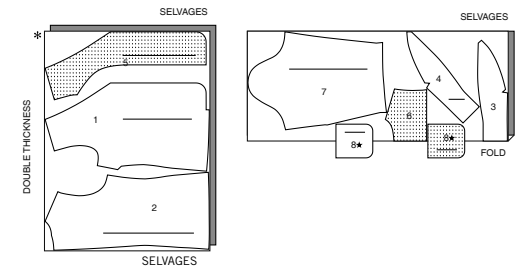
JACKET B

USE PIECES 1 2 3 4 5 6 7 8

45" (115CM) WITH NAP
SIZES 6 8



45" (115CM) WITH NAP
SIZES 10 12 14 16 18 20 22 2



CUTTING LAYOUTS CONTINUED ON PAGE 2

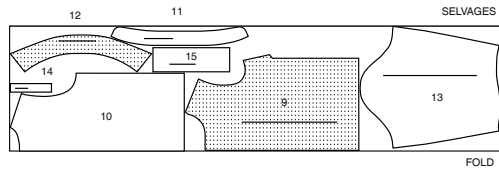
S9843

2 of 5

TOP C

USE PIECES 9 10 11 12 13 14 15

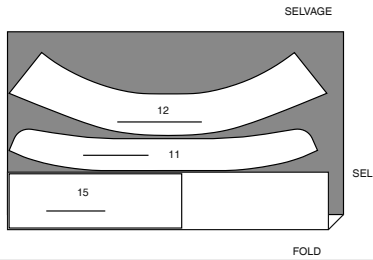
45" (115CM)
WITH NAP
ALL SIZES



INTERFACING C

USE PIECES 11 12 15

20" (51CM)
ALL SIZES

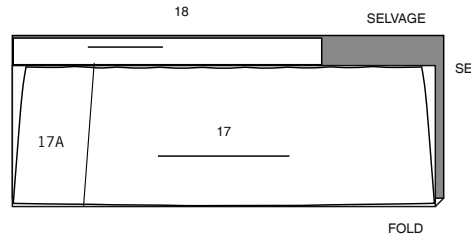


NOTE: BEFORE CUTTING FABRIC, JOIN PIECES IN PARENTHESIS TO CORRESPONDING PIECES FOLLOWING INSTRUCTIONS ON TISSUE PATTERN.

SKIRT D

USE PIECES 17(17A) 18

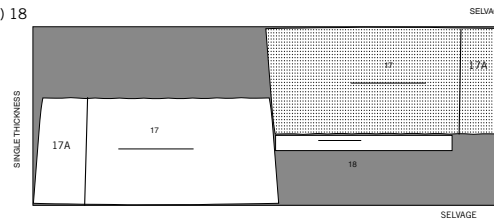
45" (115CM)
WITH NAP
ALL SIZES



SKIRT E

USE PIECES 17(17A) 18

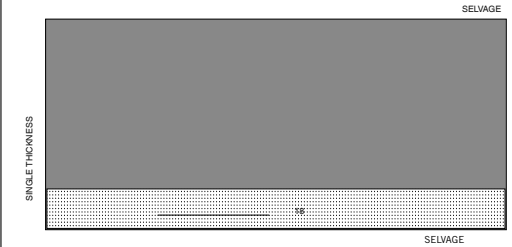
45" (115CM)
WITH NAP
ALL SIZES



INTERFACING D,E

USE PIECE 18

20" (51CM)
ALL SIZES

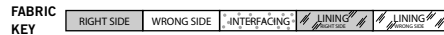


SEWING TUTORIALS



Build your skills viewing short, easy-to-follow videos at simplicity.com/sewingtutorials

Sewing Directions



Read **General Directions** on page 1 before you begin.

Sewing methods in **BOLD TYPE** have Sewing Tutorial Video available. Scan QR CODE to watch videos:

CATCHSTITCH - see Hand Stitching: "how to catchstitch" video.

DART - see Darts: "sewing flat dart" video.

EASE/GATHER - see Gathering: "sewing two row gathers" video.

EDGESTITCH - see Machine Stitches: "how to edgestitch" video.

FINISH - see Seams: "how to finish seam allowances" video.

HAND SEW HEM - see Hand Stitching: "how to sew a hem stitch" or "how to slip stitch" video.

INVISIBLE ZIPPER - see Zipper: "sewing an invisible zipper" video.

NARROW HEM - see Hems: "sewing narrow hems" video.

SLEEVE - see Armholes/Sleeves: "sewing a set in sleeve" video.

SLIPSTITCH - see Hand Stitches: "how to slip-stitch" video.

STAYSTITCH - see Machine Stitches: "how to do stay-stitching" video.

STITCH IN THE DITCH - see Machine Stitches: "how to stitch in the ditch" video.

TACK - see Hand Stitches: "how to tack" video.

TOPSTITCH - see Machine Stitches: "how to topstitch" video.

PATTERN PIECES WILL BE IDENTIFIED BY NUMBERS THE FIRST TIME THEY ARE USED.

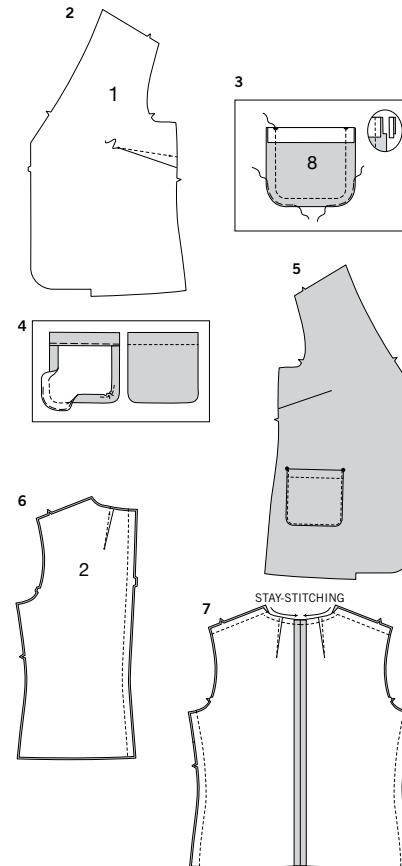
STITCH SEAMS WITH RIGHT SIDES TOGETHER UNLESS OTHERWISE STATED.

JACKET A, B

NOTE: The first view mentioned will be shown.

INTERFACING

1. Trim corners of INTERFACING, as shown. Fuse INTERFACING to wrong side of each matching FABRIC section, following manufacturer's instructions.



FRONT AND BACK

2. Stitch **DART** in FRONT (1).

VIEW B - POCKET

3. **FINISH** upper edge of **POCKET** (8). Turn upper edge to outside along foldline, forming facing. Stitch along seam line on raw edges. To ease curved edge of pocket, stitch 1/4" (6mm) from raw edge using a long machine stitch. Trim seam allowance as shown.

4. Turn corners right side out, turning facing to the wrong side, turning in side and lower edges along stitching, pulling up long stitches to shape the curves. Press. Baste facing close to inner edge. **TOPSTITCH** along basting.

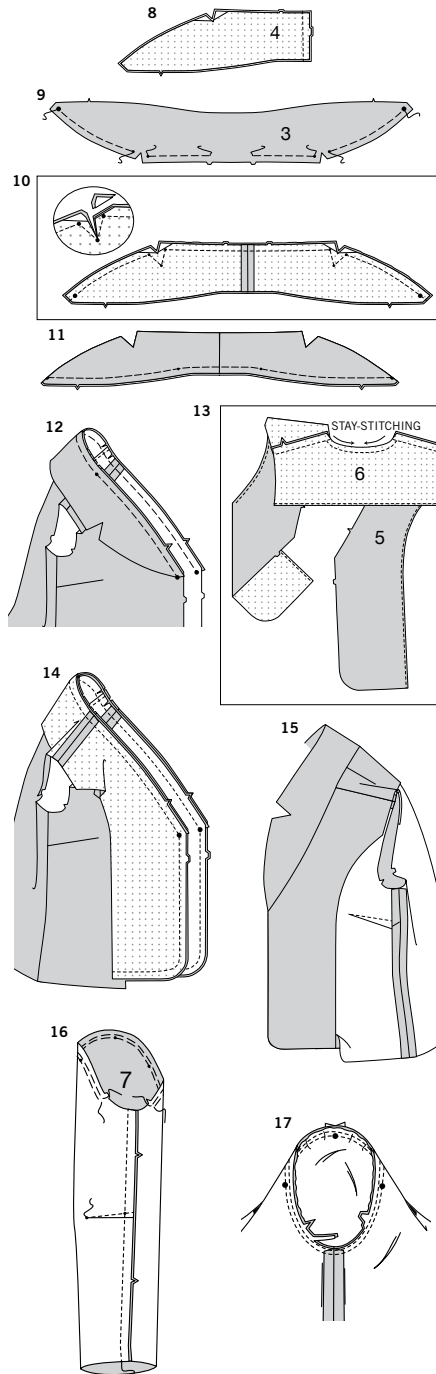
5. Pin pockets to fronts, matching large dots. **EDGESTITCH** side and lower edges.

CONTINUE AS FOLLOWS FOR VIEWS A, B

6. Stitch **DART** in BACK (2). Press toward center. Stitch center back seam.

7. **STAYSTITCH** neck edge of back. Stitch front and back together at shoulders and sides.

COLLAR AND FACINGS



8. Stitch center back seam in UNDER COLLAR (4).

9. To ease lower edge of UPPER COLLAR (3), machine-baste along seamline between double notch and small dot and between small and large dots, as shown.

10. Pin under collar to upper collar, right sides together, matching notches, center backs, large and small dots, and stitching lines. Adjust ease. Baste. Stitch upper edge, pivoting at small dots and stitching along stitching lines. Clip to inner small dot. Trim corners and seam allowances.

11. Turn right side out. Press. Baste raw edges together.

12. Pin right side of under collar to right side of jacket, matching notches, center backs and large dots, placing small dots at shoulder seams, clipping back neck as needed. Baste.

13. FINISH outer edge of FRONT FACING (5). STAYSTITCH neck edge of BACK FACING (6). FINISH lower edge. Stitch front facing to back facing at shoulders.

14. With right sides together, pin facing to jacket (over collar), matching notches, center backs, large dots, and shoulder seams. Baste. Stitch, Trim.

15. Turn facing to inside, turning collar out. Press.

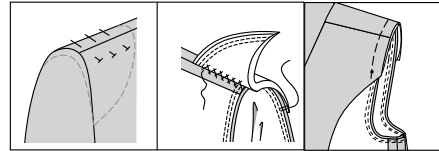
SLEEVES

NOTE: Go to simplicity.com for a how to video; see *Armholes/Sleeves: "sewing a set in sleeve"*.

16. Stitch DART in SLEEVE (7). Press down. EASE/GATHER upper edge of sleeve between notches. Stitch sleeve seam.

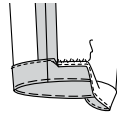
17. With right sides together, and keeping facing out of the way, pin SLEEVE into armhole with center small dot at shoulder seam, matching underarm seams, notches and remaining small dots. Adjust ease, baste. Stitch. Stitch again 1/4" (6mm) away in seam allowance. Trim close to stitching below notches. Turn seam toward sleeve.

18



18. Try on jacket. Insert shoulder pad under facing and adjust to fit until it looks right and feels comfortable. Pin in place. Remove jacket. Lift up facing. CATCHSTITCH shoulder pads to shoulder seams. TACK seam allowance to armhole seam. Turn facing down. Baste armhole edges together.

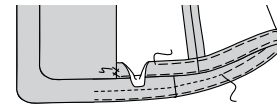
19



FINISHING

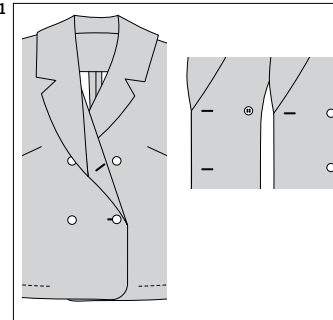
19. Turn up sleeve hem. Baste close to fold. FINISH raw edge. HAND SEW HEM in place. Press.

20



20. Turn up hem on lower edge of jacket. Baste close to fold. Trim hem to an even width. FINISH raw edge of hem. Baste upper edge of hem in place 1/4" (6mm) from raw edge. On outside, stitch hem in place using basting as a guide, ending stitching at front facing. CATCHSTITCH facing to hem.

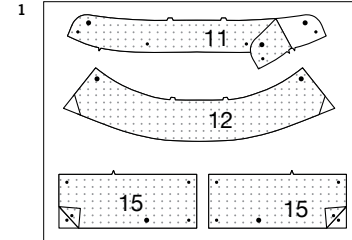
21



21. Make buttonholes in right front at markings and in left front at upper marking. Sew buttons to outside of right and left fronts at markings. Sew flat button on facing side of right front under top button marking.

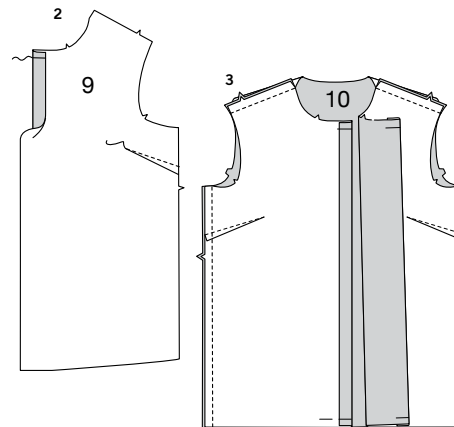
TOP C

INTERFACING



1. Trim corners of INTERFACING, as shown. Fuse INTERFACING to wrong side of each matching FABRIC section, following manufacturer's instructions.

FRONT AND BACK

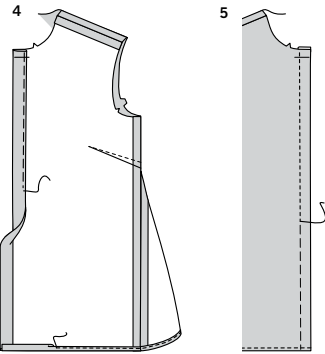


2. Stitch DART in FRONT (9). Press down. To self-interface front edge, turn front opening edges to inside along foldline for interfacing. Press. Baste upper and lower edges.

3. Stitch front to BACK (10) at shoulders and sides.

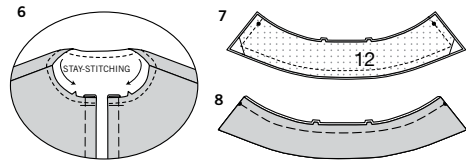
S9843

4 of 5



4. Make a 5/8" (1.5cm) **NARROW HEM** at lower edge. Turn front edge to inside along foldline for facing. Baste long edge in place. Baste across upper edge.

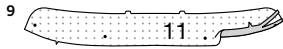
5. On outside, stitch along basting.



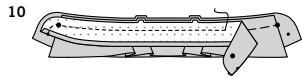
6. **STAYSTITCH** neck edge of top.

7. Stitch **COLLAR** (12) sections together leaving notched edge open. Trim corners and seam allowances.

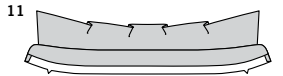
8. Turn. Press. Baste raw edges together.



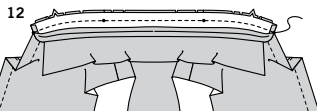
9. Turn in seam allowances on single notched edge of interfaced **COLLAR BAND** (11). Press, easing in fullness. Trim pressed seam allowance to 3/8" (1cm).



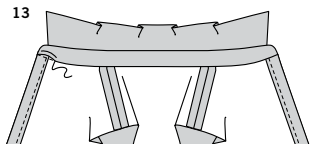
10. Pin interfaced side of collar to un-interfaced collar band, matching notches, centers and large dots. Baste between large dots. Pin interfaced collar band over collar, matching notches, centers, and large and small dots. Baste. Stitch between small dots, leaving neck edges open. Trim.



11. Turn. Press.



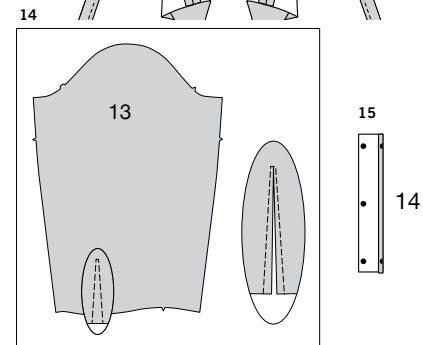
12. Pin collar band to neck edges, matching notches, centers, and outer small dots, placing inner small dots at shoulder seams, clipping neck edge where necessary. Stitch, keeping pressed edge of collar band free. Trim. Press seam toward collar band.



13. **SLIPSTITCH** pressed edge of collar band over seam.

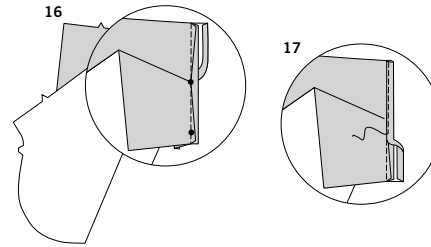
SLEEVE

NOTE: Go to simplicity.com for a how to videos; see *Armholes/ Sleeves: "how to sew a continuous lap"* and *"sewing a set in sleeve"*.



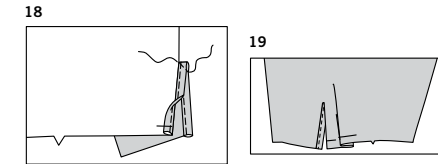
14. To make slash opening at lower edge of **SLEEVE** (13), stitch along stitching lines; pivot and take one small stitch across the point. Slash between stitching, being careful not to slash through the stitch at the point. **TIP** - To prevent fabric from fraying, treat the point with a liquid seam sealant, such as fray check™.

15. Press under 1/4" (6mm) on edge of **CONTINUOUS LAP** (14) without center small dot.



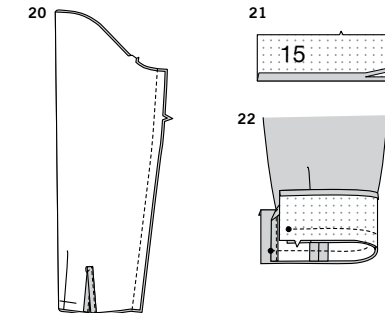
16. Spread slashed edges of sleeve apart so that they form a straight line. Pin **RIGHT** side of continuous lap to **WRONG** side of slashed edges, matching stitching lines and small dots. Sleeve seam allowance will be 1/4" (6mm) at the ends but taper close to nothing at the center dot. Stitch along stitching line, being careful not to pucker sleeve at center dot. Press seam toward lap.

17. Pin pressed edge of lap to outside slightly over stitching. Stitch close to pressed edge.



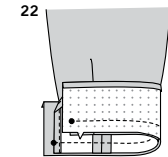
18. Turn front edge of lap to **INSIDE**; baste in place across lower edge. To keep lap in place, stitch diagonally across upper edge of lap.

19. To make pleat in lower edge of sleeve, on outside, fold along solid line. Bring fold to broken line, pin. Baste across raw edge.

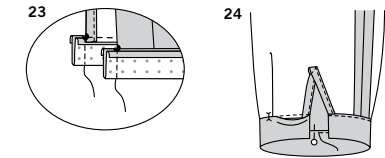


20. Stitch sleeve seam.

21. Press under 5/8" (1.5cm) on un-notched edge of **CUFF** (15). Trim pressed edge to 3/8" (1cm).

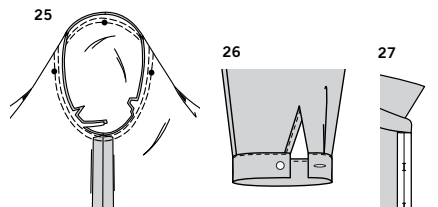


22. With right sides together, pin cuff to sleeve, matching notches, and small dots. Stitch. Press seam toward cuff.



23. Fold cuff along foldline, right sides together. Stitch ends. Trim.

24. Turn cuff. Press. On inside, pin pressed edge of cuff over seam, placing pins on the outside. On outside, **EDGESTITCH** cuff close to seam, catching in pressed edge of cuff on inside.

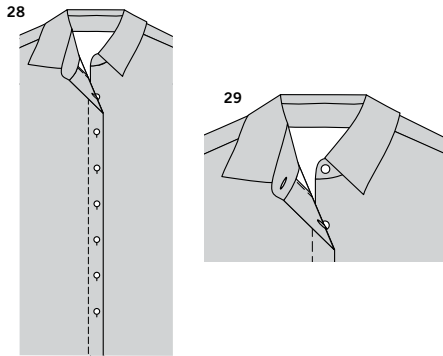


25. With right sides together, pin **SLEEVE** into armhole with center small dot at shoulder seam, matching underarm seams, notches and remaining small dots. Baste. Stitch. Stitch again 1/4" (6mm) away in seam allowance. Trim close to stitching below notches. Turn seam toward sleeve.

BUTTONHOLES AND BUTTONS

26. Make buttonhole in cuff at marking. On outside, sew button to cuff at small dot.

27. Place **BUTTONHOLE GUIDE** (16) on right front, having edges of tissue even with finished edges of top, as shown. Transfer markings. Make buttonholes at markings.



28. Lap opening edges, matching centers. Using buttonholes as guides, make button markings on left front. Sew buttons at markings.

29. Make buttonhole in right end of collar band. Sew button to left end of collar band at marking.

SKIRT D, E

NOTE: View D will be shown.

FRONT, BACK AND ZIPPER

1. Stitch FRONT AND BACK (17) sections together at right side.

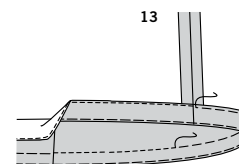
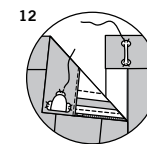
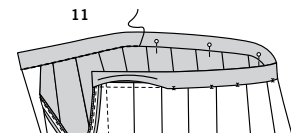
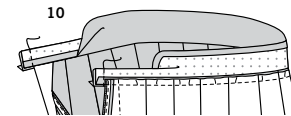
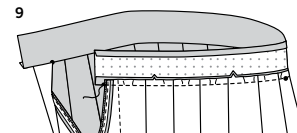
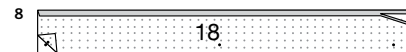
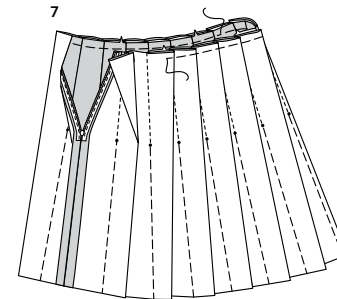
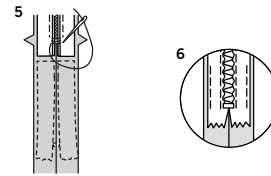
INVISIBLE ZIPPER

NOTE: Stitch the invisible zipper using an invisible zipper foot. If the zipper is longer than the zipper opening and will be adjusted after the zipper is inserted. Go to simplicity.com for a how to video; see Zipper: "sewing an invisible zipper".

2. Open the zipper and press the tape using a cool iron. On outside, pin right side of the zipper face down on the right side of the zipper opening. Have the coil along the seam line, the tape within the seam allowance and the top stop 3/4" (2cm) below upper edge, as shown. Hand-baste along center of the tape. Position zipper foot at the top of the zipper with right groove of the foot over coil. Stitch along tape to the notch. Back-stitch to reinforce.

3. Pin the remaining half of the zipper to the left side of the zipper opening in same manner. Make sure the upper and lower edges of the garment are even. Hand-baste along the center of the tape. Position zipper foot at the top of the zipper with left groove over the coil. Stitch along tape to the notch. Back-stitch to reinforce.

4. Close zipper and check that it is invisible from the outside. Pull the free ends of the zipper tape away from the seam allowance. Pin remaining left side seam together below zipper. Position zipper foot all the way to the left so the needle goes down through the outer notch of the foot. Start stitching seam 1/4" (6mm) above lowest stitch and slightly to the left. Stitch seam for about 3" (7.5cm). Stitch remainder of seam using your regular presser foot.



5. If the zipper is longer than the opening, using a strong thread, hand-sew a few small stitches across ends of coils at end of opening. Trim away lower end of zipper tape to within 5/8" (1.5cm) of hand-stitches.

6. If you prefer, open out each seam allowance at end of zipper and stitch tape to seam allowance.

7. To make pleats, on inside, bring broken lines and solid lines together, matching small dots. Baste. Stitch from upper edge to small dot. Open zipper. Starting at the left front, press pleats to the right. Fold of pleat will extend past left side back opening edge. Baste across upper edge. To ease upper edge of skirt, machine baste along seamline between zipper stitching.

WAISTBAND

8. Fuse INTERFACING to wrong side of WAISTBAND (18), following manufacturer's instructions. Turn under 1/2" (1.3cm) on un-notched edge of waistband. Press. Trim pressed seam allowance to 3/8" (1cm).

9. Pin waistband to upper edge of skirt, matching notches, centers, and outer small dots, having fold of pleat on left back edge to left edge of waistband, placing center small dot at right side seam. Adjust ease. Baste. Stitch. Trim. Press seam toward waistband.

10. With right sides together, fold waistband along foldline. Stitch ends. Trim.

11. Turn waistband to inside along foldline. Press. On inside, pin pressed edge of waistband over seam, placing pins on the outside. On outside **STITCH IN THE DITCH**, catching in pressed edge of waistband on inside.

12. Sew hook and eye closure to waistband.

HEM

13. Remove basting from pleats. Turn up a 1-1/2" (3.8cm) hem. Baste close to fold. **FINISH** raw edge. Baste in place 1/4" (6mm) from upper edge of hem. **TOPSTITCH** along basting. Press. Re-press pleats.



Congrats!

You've completed your sewing adventure

**SHARE
YOUR** LOOK



Post your pattern and tag us
@simplicity_creative_group and **#simplicitypatterns**
for a chance to be featured on our social media.

Look for more PDF patterns at **simplicity.com**

Have a question or need help with your sewing project call us at
1-888-588-2700

Simplicity
by design™

Simplicity ©2023 a division of IG Design Group Americas Inc. • Atlanta, GA 30342 USA www.thedesigngroup.com • All Rights Reserved. www.simplicity.com • Made in the U.S.A. Fabriqué aux États-Unis.

To be used for individual private home use only and not for commercial or manufacturing purposes. • A usage privé seulement et non à des fins commerciales ou de production en série. • Para uso privado solamente, no se puede utilizar con propósitos de comercialización o de producción en serie.