

S9842

Simplicity[®] COSTUMES

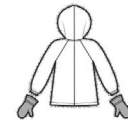


Andrea
Schnee

Shop all the pattern brands you love @

Simplicity[®].com

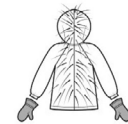
Average



A



B



C



D

CHILDREN'S ANIMAL COSTUMES

Suggested Fabrics: Fleece, Minky Fleece, Faux Fur. **A Contrast 1, B Contrast 3, C Contrast 1, D Contrast 1** in Broadcloth, Cotton Types. **Appliqués A,B,C,D, Claws A** in Felt. **D Contrast 3** in Cotton Types, Satin. **Batting D:** Thin or low loft.

Notions: **A,B,C,D:** Polyfil, one 7" (18cm) zipper (adjust to fit), 2½ yds. (2.4m) of ¾" (1.5cm) elastic, ¾ yd. (0.8m) of ¼" (6mm) elastic, one pkg. of ½" (1.3cm) single fold bias tape, one pkg. of ½" (1.3cm) double fold bias tape. **Also for C:** Two colors of 2mm craft foam, 12" x 18" (30cm x 46cm) sheets each, fabric glue or hot glue gun and glue sticks. **D:** 2½ yds. (2.0m) of medium rick rack.

| Sizes | 3 | 4 | 5 | 6 | 7 | 8 | |
|-------|---|---|---|---|---|---|--|
|-------|---|---|---|---|---|---|--|

| | | | | | | | | |
|------------------------|--------|-----|-----|-----|-----|-----|-----|------|
| Sloth Costume A | 60** | 1½ | 1½ | 1½ | 1¾ | 1¾ | 2 | Yds. |
| | 150cm* | 1.4 | 1.4 | 1.5 | 1.6 | 1.7 | 1.8 | m |

Contrast 1 (Pants Yoke, Shoe Cover Linings): 45** - ½ yd. (1.15cm - 0.5m)

Contrast 2 (Face): 60** - ¼ yd. (150cm - 0.2m)

Contrast 3 (Eye Patches, Mitten Palms): 60** - ¾ yd. (150cm - 0.3m)

Eyes and Nose Appliqués A, Claws A: One 9" x 12" (23cm x 30cm) sheet each

| | | | | | | | | |
|------------------------|--------|-----|-----|-----|-----|-----|-----|------|
| Lemur Costume B | 60** | 1¼ | 1¼ | 1½ | 1½ | 1½ | 1½ | Yds. |
| | 150cm* | 1.1 | 1.1 | 1.3 | 1.3 | 1.3 | 1.5 | m |

Contrast 1 (Top Front, Face, Tail Rings)

| | | | | | | | | |
|--------|-----|-----|-----|-----|-----|-----|-----|------|
| 60** | ¾ | ¾ | ¾ | ¾ | ¾ | ¾ | ¾ | Yds. |
| 150cm* | 0.6 | 0.6 | 0.7 | 0.7 | 0.7 | 0.7 | 0.7 | m |

Contrast 2 (Shoe Covers, Tail Rings, Inner Ears, Mittens)

| | | | | | | | | |
|--------|-----|-----|-----|-----|-----|-----|-----|-----|
| 60** | ½ | ½ | ½ | ½ | ½ | ½ | ½ | Yd. |
| 150cm* | 0.3 | 0.3 | 0.5 | 0.5 | 0.5 | 0.5 | 0.5 | m |

Contrast 3 (Pants Yoke, Shoe Cover Linings): 45** - ½ yd. (1.15cm - 0.5m)

Eye Patch, Pupil, Nose Appliqués B: One 9" x 12" (23cm x 30cm) sheet

Eye Appliqués B: 3" x 3" (8cm x 8cm) remnant

| | | | | | | | | |
|----------------------------|--------|-----|-----|-----|-----|-----|-----|------|
| Porcupine Costume C | 60** | 1½ | 1½ | 1½ | 1¾ | 1¾ | 1¾ | Yds. |
| | 150cm* | 1.4 | 1.4 | 1.5 | 1.5 | 1.6 | 1.7 | m |

Contrast 1 (Pants Yoke, Shoe Cover Linings): 45** - ½ yd. (1.15cm - 0.5m)

Contrast 2 (Face, Mitten Palms): 60** - ¾ yd. (150cm - 0.3m)

Eyes and Nose Appliqués C: One 9" x 12" (23cm x 30cm) sheet

Foam C: Two sheets in one color, one sheet in a second color

| | | | | | | | | |
|--------------------------|--------|-----|-----|-----|-----|-----|-----|------|
| Axolotl Costume D | 60** | 1¼ | 1¼ | 1¼ | 1½ | 1½ | 2 | Yds. |
| | 150cm* | 1.6 | 1.6 | 1.6 | 1.7 | 1.7 | 1.8 | m |

Contrast 1 (Pants Yoke, Shoe Cover Linings): 45** - ½ yd. (1.15cm - 0.5m)

Contrast 2 (Gills, Fins): 45** - ½ yd. (1.15cm - 0.5m)

Eye Appliqués D: 3" x 3" (8cm x 8cm) remnant

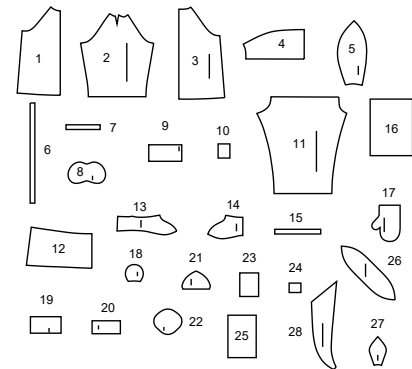
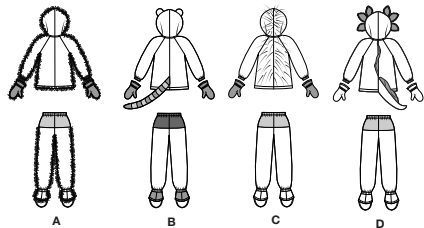
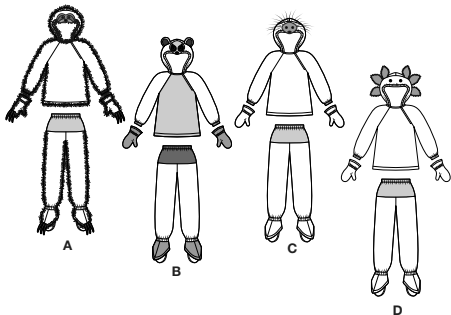
Batting D: 60" - ¾ yd. (150cm - 0.3m)

Note: Please refer to the sewing instructions for **FINISHED GARMENT MEASUREMENTS.**

*with nap **without nap

Simplicity®

Thank you for purchasing this Simplicity pattern. We made every effort to provide you with a high quality product.



- 1 TOP FRONT - A,B,C,D
- 2 SLEEVE - A,B,C,D
- 3 TOP BACK - A,B,C,D
- 4 HOOD FRONT - A,B,C,D
- 5 HOOD BACK - A,B,C,D
- 6 ELASTIC GUIDE FOR HOOD - A,B,C,D
- 7 ELASTIC GUIDE FOR ARM - A,B,C,D
- 8 FACE - A
- 9 EYE PATCH APPLIQUE - A
- 10 EYE AND NOSE APPLIQUE - A,C,D
- 11 PANTS FRONT AND BACK - A,B,C,D
- 12 PANTS YOKE - A,B,C,D
- 13 OUTER SHOE COVER - A,B,C,D
- 14 INNER SHOE COVER - A,B,C,D
- 15 ELASTIC GUIDE FOR LEG - A,B,C,D
- 16 CLAWS - A
- 17 MITTEN - A,B,C,D
- 18 EAR - B
- 19 INNER EAR APPLIQUE - B
- 20 TAIL RINGS - B
- 21 TAIL TIP - B
- 22 FACE - B,C
- 23 NOSE, EYE PATCH AND PUPILS APPLIQUE - B
- 24 EYE APPLIQUE - B
- 25 QUILLS - C
- 26 FIN - D
- 27 GILLS - D
- 28 TAIL - D

General Directions

The Pattern

- SYMBOLS**
- ↔ GRAIN LINE Place on straight grain of fabric parallel to selvage
 - ▬ PLACE SOLID LINE on fold of fabric.
 - CENTER FRONT OR BACK of garment.
 - ∇ NOTCHES
 - DOTS
 - CUTTING LINE
 - ▬▬ LENGTHEN OR SHORTEN LINES
- SEAM ALLOWANCE: 5/8" (1.5cm) unless otherwise stated is included but not printed on MULTI-SIZE PATTERNS. Mark your size with colored felt tip pen. See chart on tissue for how to use MULTI-SIZE PATTERNS.

- ADJUST IF NEEDED**
- Make adjustments before placing pattern on fabric.
- TO LENGTHEN:** Cut pattern between lengthen or shorten lines. Spread pattern evenly, the amount needed and tape to paper.
- TO SHORTEN:** At lengthen or shorten lines, make an even pleat taking up amount needed. Tape in place.
- When lengthen or shorten lines are not given, make adjustments at lower edge of pattern.

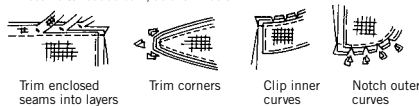
Cutting/Marking

- BEFORE CUTTING:**
- PRESS pattern pieces with a warm dry iron. PRE-SHRINK fabric by pre-washing washables or steam-pressing non-washables.
 - CIRCLE your cutting layout.
 - PIN pattern to fabric as shown in Cutting Layouts.
 - FOR DOUBLE THICKNESS: Fold fabric with RIGHT sides together.
 - FOR SINGLE THICKNESS: Place fabric RIGHT side up.
 - FOR PILE, SHADED OR ONE WAY DESIGN FABRICS: Use "with nap" layouts

- AFTER CUTTING:**
- Transfer markings to WRONG side of fabric before removing pattern. Use pin and chalk method or dressmaker's tracing paper and wheel.
- To Quick Mark:**
- Snip edge of fabric to mark notches, ends of fold lines and center lines.
 - Pin mark dots.

Sewing

- SEW garment following Sewing Directions.
- PIN or machine-baste seams matching notches.
- STITCH 5/8" (1.5 cm) seams unless otherwise stated.
- PRESS seams open unless otherwise indicated clipping when necessary so seams will lie flat.
- TRIM seams to reduce bulk, as shown below.



SPECIAL CUTTING NOTES

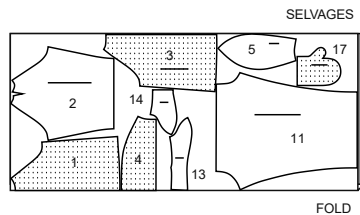
- ★ If layout shows a piece extending past fold, cut out all pieces except piece that extends.
- ✱ Mark small arrows along both selvages indicating direction of nap or design. Fold fabric crosswise with RIGHT sides together, and cut along fold (a).
- Turn one fabric layer around so arrows on both layers go in the same direction. Place RIGHT sides together (b).

| Sizes | 3 | 4 | 5 | 6 | 7 | 8 |
|---|----------|----------|----------|----------|----------|----------|
| FINISHED GARMENT MEASUREMENTS (Includes Design and Wearing Ease) | | | | | | |
| Top A,B,C,D Chest | 28½ (72) | 29½ (75) | 30½ (77) | 31½ (80) | 32½ (83) | 33½ (85) |
| Top A,B,C,D Waist | 30 (76) | 31 (77) | 32 (81) | 33 (84) | 34 (86) | 35 (89) |
| Pants A,B,C,D Waist | 24 (61) | 25 (64) | 26 (66) | 27 (69) | 28 (71) | 29 (74) |
| Pants A,B,C,D Hip | 25½ (65) | 26½ (67) | 27½ (70) | 28½ (72) | 29½ (75) | 30½ (77) |
| Width, lower edge | | | | | | |
| Top A,B,C,D | 33 (84) | 34 (86) | 35 (89) | 36 (91) | 37 (94) | 38 (97) |
| Finished back length from base of neck | | | | | | |
| Top A,B,C,D | 18½ (46) | 18½ (47) | 19 (48) | 19½ (50) | 20 (51) | 20½ (52) |
| Finished side length from waist | | | | | | |
| Pants A,B,C,D (excl. shoe covers) | 23 (58) | 24½ (62) | 26 (66) | 27½ (70) | 29 (74) | 30½ (77) |

SLOTH COSTUME A

USE PIECES 1 2 3 4 5 11 13 14 17

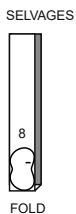
60" (150CM) WITH NAP ALL SIZES



CONTRAST 2 (FACE)

USE PIECE 8

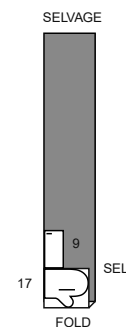
60" (150CM) WITH NAP ALL SIZES



CONTRAST 3 (EYE PATCHES, MITTEN PALMS)

USE PIECES 9 17

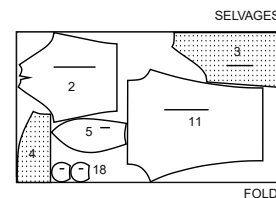
60" (150CM) WITH NAP ALL SIZES



LEMUR COSTUME B

USE PIECES 2 3 4 5 11 18

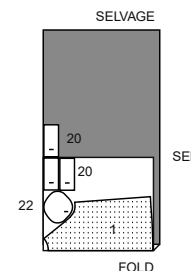
60" (150CM) WITH NAP ALL SIZES



CONTRAST 1 (TOP FRONT, FACE, TAIL RINGS)

USE PIECES 1 20 22

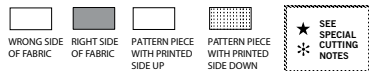
60" (150CM) WITH NAP ALL SIZES



EYES AND NOSE APPLIQUE AND CLAWS A: CUT ONE OF PIECE 10 AND ONE OF PIECE 16 FROM FELT

CUTTING LAYOUTS CONTINUED ON PAGE 2

Cutting Layouts

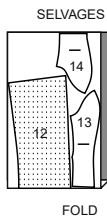


POSITION OF PATTERN PIECES MAY VARY SLIGHTLY ACCORDING TO YOUR PATTERN SIZE

CONTRAST A,C,D 1 (PANTS YOKE, SHOE COVER LININGS)

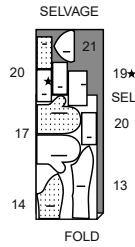
USE PIECES 12 13 14

45" (115CM) WITH NAP ALL SIZES



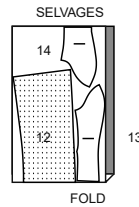
CONTRAST 2 (SHOE COVERS, TAIL RINGS AND TIP, INNER EARS, MITTENS)
USE PIECES 13 14 17 19 20 21

60" (150CM)
WITH NAP
ALL SIZES



CONTRAST 3 (PANTS YOKE, SHOE COVER, LINING)
USE PIECES 12 13 14

60" (150CM)
WITH NAP
ALL SIZES

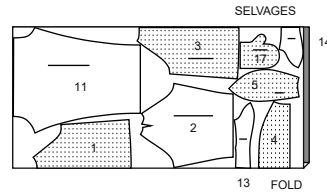


EYE PATCH, PUPIL, NOSE APPLIQUE B:
CUT ONE OF PIECE 23 FROM 9" x 12" (23CM x 30CM) FELT SHEET

EYE APPLIQUE B:
CUT ONE OF PIECE 24 FROM FELT

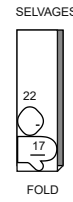
PORCUPINE COSTUME C
USE PIECES 1 2 3 4 5 11 13 14 17

60" (150CM)
WITH NAP
ALL SIZES



CONTRAST 2 (FACE, MITTEN PALMS)
USE PIECES 17 22

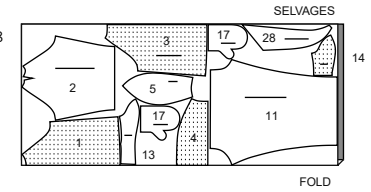
60" (150CM)
WITH NAP
ALL SIZES



EYES AND NOSE APPLIQUE C:
CUT ONE OF PIECE 10 FROM FELT

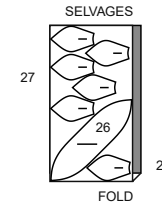
AXOLOTL COSTUME D
USE PIECES 1 2 3 4 5 11 13 14 17 28

60" (150CM)
WITH NAP
ALL SIZES



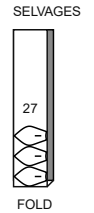
CONTRAST 2 (GILLS, FINS)
USE PIECES 26 27

45" (115CM)
WITH NAP
ALL SIZES



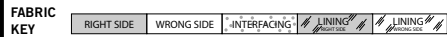
BATTING D
USE PIECE 27

60" (150CM)
ALL SIZES



EYES APPLIQUE D:
CUT EYES FROM PIECE 10 OUT OF FELT

Sewing Directions



Read **General Directions** on page 1 before you begin.

SIMPLY THE BEST TECHNIQUES...

FOR KNITS

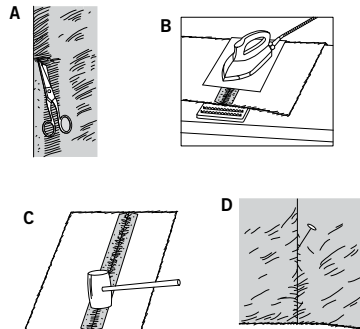
- Use a ball point or stretch needle.
- Decrease pressure on presser foot for heavy sweater knits; increase pressure for lingerie knits.
- Stretch knits need seams that are supple enough to "give" with the fabric. You can sew them with straight stitches (stretching the fabric slightly as you sew), narrow zig-zag stitches or one of the stretch stitches built into many conventional machines, or on your serger.
- Some knits require very little or no pressing while sewing. Use the appropriate temperature setting. Press lightly or use steam.
- To prevent shoulder seams from stretching, pin center of hem tape, clear elastic or twill tape along seam line on front shoulder edges, then stitch the shoulder seams.

FOR FLEECE

- Fleece fabric is strong, hard to puncture or tear and doesn't ravel or get pilly.
- Since cut edges of fleece fabrics do not ravel, inner edges of seams and hems can be left raw.
- When pinning pieces together, use long pins...the kind with bead heads are best because short pins tend to get lost in the fleece.
- When stitching, try using a narrow zig-zag stitch, adjusting the width and length for the type of fleece you are using. Always test first on some scraps and keep for reference.
- Sew slowly and carefully the first time you stitch a seam as stitches are hard to remove.
- When sewing around shaped areas sew slowly being careful not to stretch the fleece as you feed fabric through your machine.
- Finger press or steam press on a low temperature setting using a press cloth.
- Raw edges can also be cut with pinking shears

FOR FUR FABRICS

- Hand-baste seams to prevent slipping. Gather by hand. For high pile fabrics, shear away 1/2" (1.3cm) within the seam allowance.
- Never place iron directly on fur fabric. Press on **WRONG** side, using a velvet board and cloth.
- Heavier fur fabrics may need some pounding with a heavy object to keep seams and edges flat.
- On **OUTSIDE**, with a pin, pick the pile up along the seams. **IMPORTANT:** When using deep pile furs, use a longer stitch and looser tension when stitching. Release the presser foot of the machine if the fabric is especially thick.



GENERAL DIRECTIONS FOR APPLIQUES

PREPARING APPLIQUES- Apply paper backed fusible web to **WRONG** side of applique fabric, following manufacturer's directions. Pin pattern to **RIGHT** side of prepared fabric. Cut out each applique. Transfer markings to **RIGHT** side of applique using a washable fabric marking pen or pencil.

APPLYING APPLIQUES- Pin appliques to project placing raw edges along markings. A glue stick can be used to temporarily hold the appliques in place before stitching. Fuse appliques in place, following manufacturer's directions. Appliques can also be basted in place when glue has difficulty sticking to pile fabrics.

Zig-zag (satin) stitch along raw edges and/or broken lines or use fabric paint to seal the edges. Allow paint to dry before you continue. **NOTE:** Zig-zag stitching will not be shown in further illustrations.

Sewing methods in **BOLD TYPE** have Sewing Tutorial Video available. Scan QR CODE to watch videos:

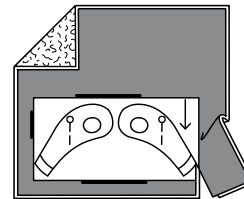
- DART** - see **Darts: "sewing flat dart"** video.
- DOUBLE-STITCH** - see **Machine Stitches: "how to sew a double stitch"** video
- EASE/GATHER** - see **Gathering: "sewing two row gathers"** video.
- SLIPSTITCH** - see **Hand Stitches: "how to slip-stitch"** video .
- TACK** - see **Hand Stitches: "how to tack"** video.
- UNDERSTITCH** - see **Machine Stitches: "how to understitch"** video.

Sewing methods shown in **ITALICS** are defined below:

STUFF - Pull fiberfill apart and fluff it before you use it. Break apart the lumps and thick spots. This will help to create a smoother looking project.

Use pieces about the size of a tennis ball. Pack into place using the end of a long handled wooden spoon or chop-stick. Use small pieces and pack into place using the end of a crochet hook or chop-stick. Pack firmly in place each time stuffing is added. Use both hands to mold and shape, being careful not to over stuff or make lopsided.

BATTING- Pin batting to **WRONG** side of project section, having raw edges even. Machine-baste batting in place along seam lines. Trim batting close to basting. Trimming will not be shown in further illustrations.



PREPARING APPLIQUES

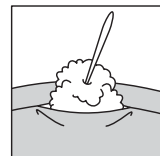


APPLYING APPLIQUES

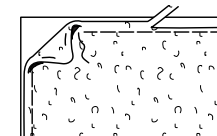
SEWING TUTORIALS



Build your skills viewing short, easy-to-follow videos at simplicity.com/sewingtutorials



STUFF



BATTING

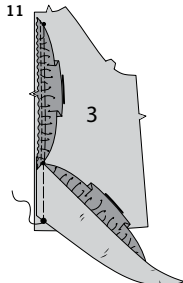
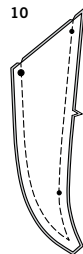
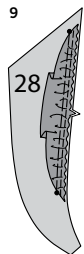
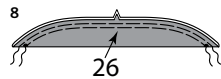
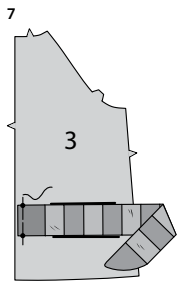
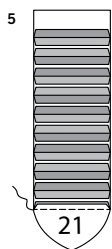
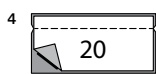
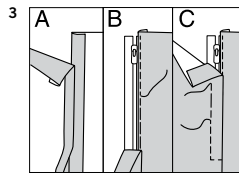
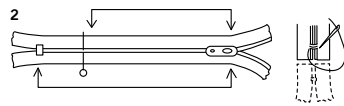
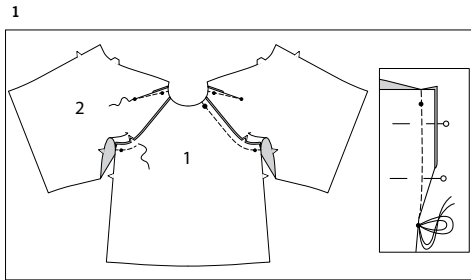
PATTERN PIECES WILL BE IDENTIFIED BY NUMBERS THE FIRST TIME THEY ARE USED.

STITCH SEAMS WITH RIGHT SIDES TOGETHER UNLESS OTHERWISE STATED.

TOP A, B, C, D

NOTE: First view mentioned will be shown.

FRONT, SLEEVE AND ZIPPER



- To stitch dart seam in SLEEVE (2), bring broken lines together. Stitch broken line from raw edge to point. Press dart seam open and point to one side.
Stitch sleeves to FRONT (1) at armhole edges, leaving open above notch on left side, as shown.

- It may be necessary to adjust the length of your zipper. Measure the opening of garment from notch to seam line at neck edge, less 1/4" (6mm). Close the zipper and measure from the tab down along the teeth to the length needed. Mark new length. With a heavy-duty thread, make several overcast stitches across zipper teeth at marking. Trim away lower end of zipper tape to within 5/8" (1.5cm) of overcast stitches.

- Press under 5/8" (1.5cm) on left front opening edge and 1/2" (1.3cm) on left sleeve opening edge.
- Place closed zipper (face up) under sleeve opening edge, placing zipper stop at large dot and opening edge close to zipper teeth. Using a zipper foot, stitch close to edge.
- Pin front opening edge to zipper tape, lapping front 1/8" (3mm) over sleeve. Baste 3/8" (1cm) from pressed edge and 1/4" (6mm) below end of zipper. Stitch as basted, using an adjustable zipper foot and squaring stitches across lower end, as shown.

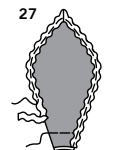
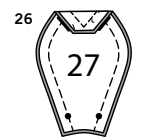
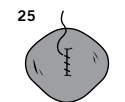
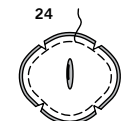
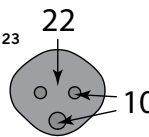
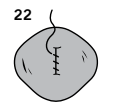
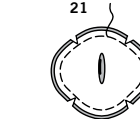
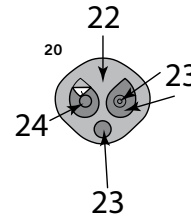
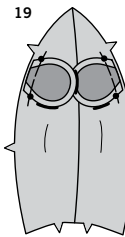
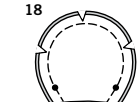
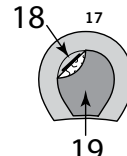
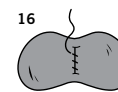
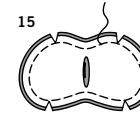
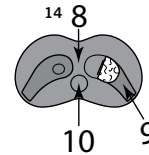
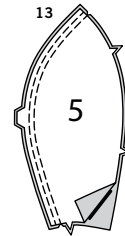
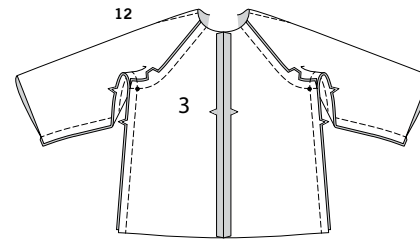
BACK AND SIDE SEAMS

TAIL B

- Stitch one TAIL RINGS (20) section cut of CONTRAST 1 to one tail rings section cut of CONTRAST 2 along one long edge, as shown. Repeat for remaining tail ring sections.
- Join the tail ring pairs together, stitching contrast 1 to contrast 2. Stitch TAIL TIP (21) to bottom tail ring cut of contrast 1.
- Fold tail in half lengthwise, having raw edges even. Stitch, leaving upper edge open. Trim.
- Turn right side out. **STUFF**. Pin tail to one BACK (3) section between small dots. Baste.

TAIL D

- Fold each FIN (26) section in half lengthwise, wrong sides together, matching notches, having raw edges even. **GATHER** raw edges together.
- Pin one fin section to one TAIL (28) section, matching notches, and small dots. Adjust gathers. Baste.
- Pin tail sections, right sides together, matching notches, and large and small dots. Stitch, leaving straight edge open. Trim.
- Turn right side out. **STUFF**. On OUTSIDE, pin tail to one BACK (3) section, matching small and large dots. Baste. Pin remaining fin section to back, matching notches, and small dots. Adjust gathers. Baste.



CONTINUE AS FOLLOWS FOR VIEWS A, B, C, D

- Stitch center back seam in BACK (3). Stitch back to sleeves. Pin front to back at sides and underarm edges, matching seams. Stitch in one continuous seam. To reinforce curve at underarm, stitch again over first stitching. Trim. Clip curves if necessary.

HOOD

- DOUBLE-STITCH** center back seam in HOOD BACK (5).

HOOD A

- For front of face, cut out shapes from EYE PATCH (9). **PREPARE** EYE AND NOSE APPLIQUE (10) and **APPLY** eyes to eye patch and nose to one FACE (8) section. Pin eyepatch to face within markings, baste.
- Make a small slit in remaining face section. Pin face sections, right sides together, having raw edges even. Stitch outer edges using a 3/8" (1cm) seam. Trim seam, clip curves, if necessary.

- Turn right sides out through slit opening. **STUFF** very lightly. Whipstitch opening closed. Press flat.

HOOD B

- PREPARE** INNER EAR (19). **APPLY** each inner ears to one EAR (18) section, within markings.

- Pin remaining ear sections to ears, right sides together. Stitch curved outer edge, leaving lower edge open. Trim seam, clip curves.

- Turn right side out. Pin ears to hood back as shown, matching small dots. Baste.

- PREPARE** NOSE, EYE PATCH AND PUPILS APPLIQUE (23) and EYE APPLIQUE (24). **APPLY** nose and eye patch appliques to one FACE (22) section. **APPLY** eye applique to eyepatch. **APPLY** pupil applique to eye.

- Make a small slit in remaining face section. Pin face sections, right sides together, having raw edges even. Stitch outer edges in a 3/8" (1cm) seam. Trim seam, clip curves.

- Turn right sides out through slit opening. **STUFF** very lightly. Whipstitch opening closed. Press flat.

HOOD C

- PREPARE** EYE AND NOSE APPLIQUE (10). **APPLY** nose and eyes appliques to one FACE (22) section within markings.

- Make a small slit in remaining face section. Pin face sections, right sides together, having raw edges even. Stitch outer edges in a 3/8" (1cm) seam. Trim seam, clip curves.

- Turn right sides out through slit opening. **STUFF** very lightly. Whipstitch opening closed. Press flat.

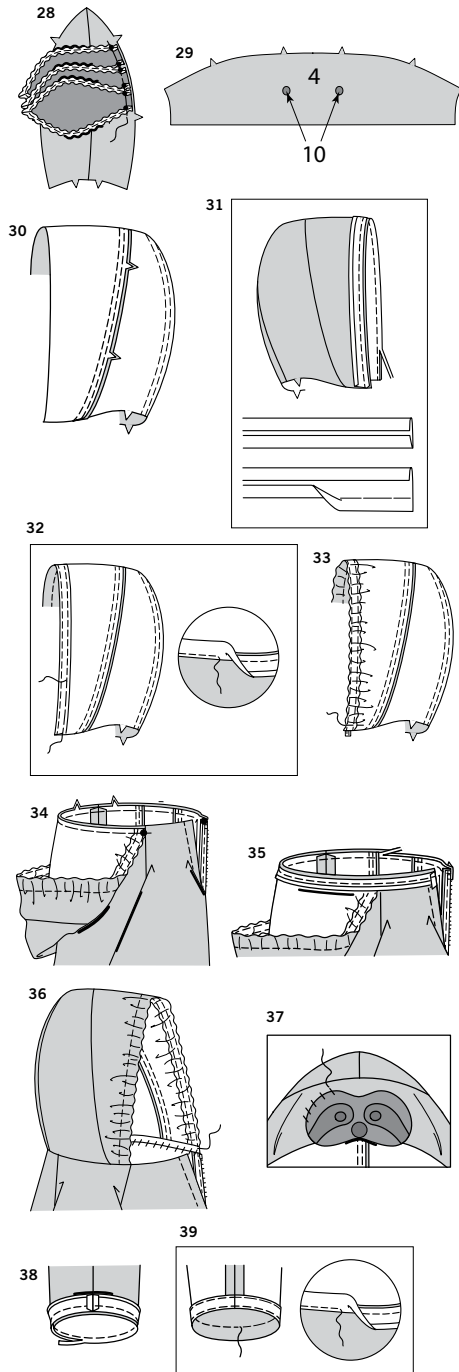
HOOD D

- Baste **BATTING** to six GILLS (27) sections. Pin remaining gills to gills with batting, right sides together, matching small dots. Stitch curved outer edges using 3/8" (1cm) seam, leaving lower edge open. Trim corner.

- Turn right side out. Press. Baste raw edges together. Center rick rack over finished edge, folding in corner at point. Stitch close to finished edge of gill.

S9842

4 of 5



28. Pin gills to hood back, as shown, matching small dots. Baste in place.

29. PREPARE EYE AND NOSE APPLIQUE (10). APPLY eye appliques to HOOD FRONT (4) within placement lines.
NOTE: Nose will not be used.

CONTINUE AS FOLLOWS FOR VIEWS A, B, C, D

30. With right sides together, pin hood front to hood back, matching notches and centers. Baste. **DOUBLE-STITCH** seam.

31. For casing, open out 1/2" (1.3cm) wide double-fold bias tape and press flat, as shown. Open out crease at one edge of bias tape. With right sides together, pin bias tape to outer edge of hood front placing crease along the 3/8" (1cm) seamline. Stitch along crease. Trim garment seam allowance even with tape, if necessary.

32. UNDERSTITCH tape. Turn tape to inside. Baste folded edge of tape in place. Stitch close to fold.

33. Cut a piece of 5/8" (1.5cm) wide elastic using ELASTIC GUIDE FOR HOOD (6). Insert elastic through casing, having ends even. Baste across opening.

34. Pin hood to neck edge of top, right sides together, matching large dots on sleeves, and center back seams. Baste.

35. Open out crease at one edge of 1/2" (1.3cm) wide single fold bias tape. Press lightly. Pin bias tape to neck seam, placing crease along seamline, turning under ends at opening edges of top. Stitch along crease. Trim garment seam allowance even with edge of tape.

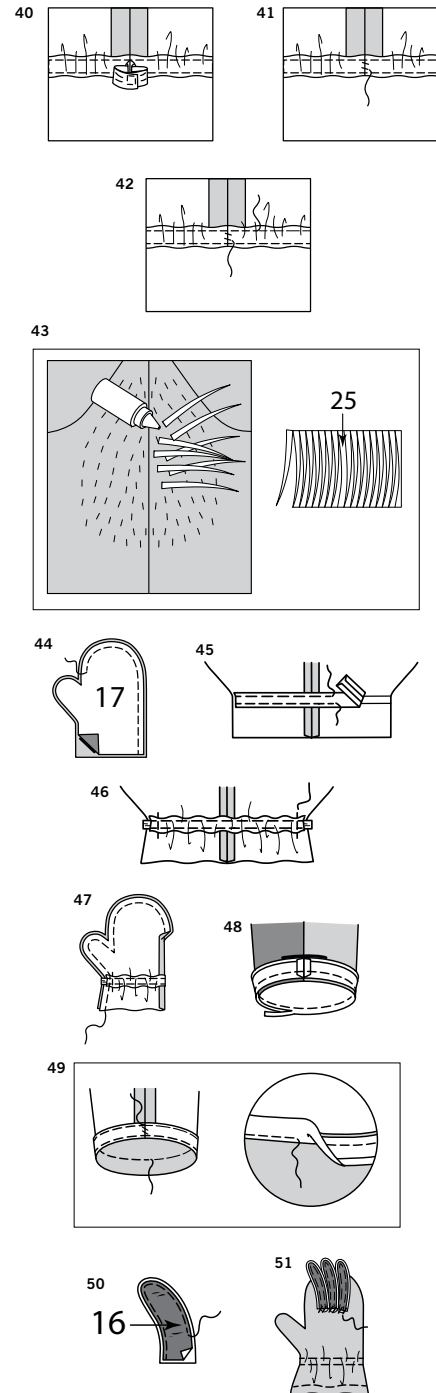
36. Press seam and tape toward top. **SLIPSTITCH** remaining long edge of tape to top. **SLIPSTITCH** ends.

37. Views A, B, C: Pin face to hood, matching centers, having lower edge of face at front edge of hood.
TIP: To find the best place to position the face, pin to hood while being worn on child's head. **SLIPSTITCH** to hood around outer edge of face.

FINISHING

38. For sleeve casing, open out 1/2" (1.3cm) wide double-fold bias tape and press flat. Open out crease at one edge of bias tape. Pin bias tape to lower edge of sleeve placing crease along 3/8" (1cm) seamline, turning in ends at underarm seam. Stitch along crease. Trim garment seam allowance even with tape.

39. UNDERSTITCH tape. Turn tape to inside. Baste folded edge of tape in place. Stitch close to fold.



40. Cut two pieces of 5/8" (1.5cm) wide elastic using ELASTIC GUIDE FOR ARM (7). Insert elastic through casing. Lap ends and hold with a safety pin. Try on garment and adjust to fit. Stitch ends of elastic together securely.

41. SLIPSTITCH opening closed.

42. Apply bias tape to lower edge of garment in same manner as sleeve.
UNDERSTITCH tape. Turn tape to inside. Baste folded edge of tape in place. Stitch close to fold. **SLIPSTITCH** opening closed.

43. VIEW C: Cut each 9" (23cm) x 12" (31cm) piece of craft foam in half to get two 9" (23cm) by 6" (15cm) pieces. Using QUILLS (25) pattern piece, transfer markings to craft foam and cut out quills starting at wide end to narrow. Each rectangle should give about thirty-two quills. Place a piece of cardboard inside top and a large Styrofoam ball (or balled up pillow) in the hood. Working in sections, hot glue wide end of quills to back and hood at markings, evenly distributing the contrast quills among the main color. Let glue dry completely before moving to another section.

MITTENS A, B, C, D

44. For each mitten, pin two MITTEN (17) sections, right sides together, having raw edges even.
NOTE: For **VIEW A and C**, pin one FABRIC mitten to one CONTRAST mitten.
Stitch outer edge in a 3/8" (1cm) seam, beginning at lower edge and stopping at stitching line above thumb.

45. Open out mittens. For casing, on inside, pin single-fold bias tape to mitten centering folded edges of tape over stitching lines, having ends even with raw edges of mitten. Stitch close to folds of tape.

46. Cut two pieces of 1/4" (6mm) wide elastic using ELASTIC GUIDE FOR ARM (7). Insert elastic through casing, having ends even. Baste across ends.

47. Pin mitten sections together again, matching stitching lines. Stitch remainder of seam, leaving bottom open.

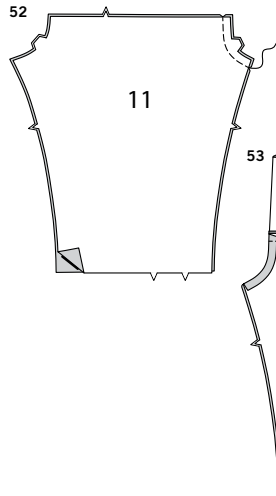
48. Turn right side out. Press. For binding at lower edge, open out 1/2" (1.3cm) wide double-fold bias tape and press flat, as shown. Open out crease at one edge of bias tape. Pin bias tape to lower edge placing crease along 3/8" (1cm) seamline and turning under ends to meet at inner seam. Stitch along crease. Trim garment seam allowance even with tape.

49. UNDERSTITCH tape. Turn tape to inside. Baste folded edge of tape in place. Stitch close to fold. **SLIPSTITCH** opening closed.

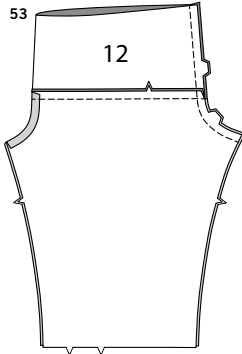
50. VIEW A- For claws, cut out shapes from CLAWS (16). For each claw, with wrong sides together, pin two claws sections together, having raw edges even. Stitch outer curved edges using 1/8" (3mm) seam, leaving straight edge open. **STUFF** firmly. Set aside six claws for feet.

51. Pin three claws to outside of each mitten at markings. Hand-sew ends of each claw to top layer of mitten securely. **TACK** claws together near the bottom. This keeps them together as a unit and helps them stand up stiff.

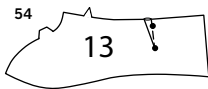
PANTS



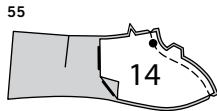
52. Stitch center front seam in PANTS FRONT AND BACK (11).



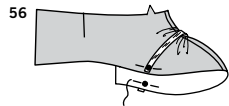
53. Pin PANTS YOKE (12) to upper edge of pants, matching notches, and center fronts. Stitch. Press seam toward yoke. Stitch center back seam.



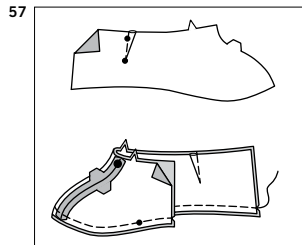
54. Stitch DART in each OUTER SHOE COVER (13). Press to one side.



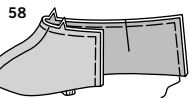
55. For each shoe cover, stitch one INNER SHOE COVER (14) to one outer shoe cover at center front, matching notches, and large dots. Clip curve.



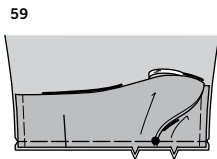
56. Cut two pieces of 1/4" (6mm) wide elastic, each 3-1/2" (9cm) long. Pin ends of elastic to lower edge of shoe cover at small dots, as shown.



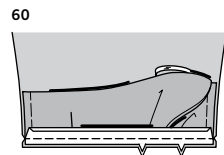
57. For LINING, stitch remaining outer and inner shoe cover sections together in same manner as shoe covers. Pin lining to shoe cover at lower edge matching center front seams and small dots. Stitch lower edge.



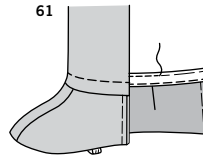
58. Turn lining to inside. Baste raw edges.



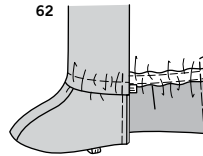
59. With right sides together, pin shoe cover to lower edge of pant leg, matching notches, and large dots. Baste.



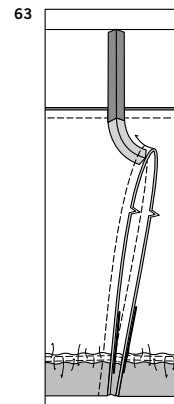
60. For casing, open out 1/2" (1.3cm) wide double-fold bias tape and press flat, as shown. Open out crease at one edge of bias tape. Pin bias tape to lower edge of pant leg, over shoe cover, placing crease along 3/8" (1cm) seamline. Stitch along crease. Trim garment seam allowance even with tape.



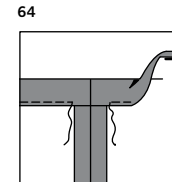
61. UNDERSTITCH tape. Turn tape to inside, turning shoe cover out. Baste folded edge of tape to pant leg. Stitch close to fold.



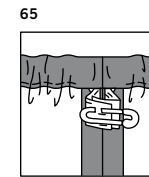
62. Cut two pieces of 5/8" (1.5cm) wide elastic using ELASTIC GUIDE FOR LEG (15). Insert elastic through casing having ends even. Baste across ends.



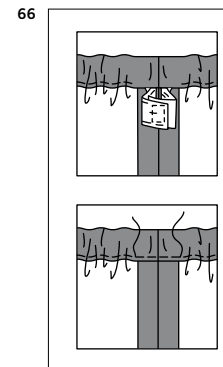
63. Pin inner leg seam, matching center seams and casings. Stitch.



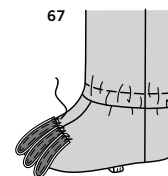
64. Press 3/4" (2cm) on upper edge of pants to inside, forming casing. Stitch close to inner edge of casing, leaving an opening to insert elastic.



65. Cut a piece of 5/8" (1.5cm) wide elastic to fit waist, plus 1" (2.5cm). Insert elastic through casing. Overlap ends and hold with a safety pin. Try on and adjust to fit.



66. Stitch ends of elastic securely. Stitch opening closed.



67. VIEW A: Hand-sew bottom of each remaining claw to shoe cover securely. TACK claws together near the bottom. This keeps them together as a unit and helps them stand up stiff.



Congrats!

You've completed your sewing adventure

**SHARE
YOUR** LOOK



Post your pattern and tag us
@simplicity_creative_group and **#simplicitypatterns**
for a chance to be featured on our social media.

Look for more PDF patterns at **simplicity.com**

Have a question or need help with your sewing project call us at
1-888-588-2700

Simplicity
by design

Simplicity ©2023 a division of IG Design Group Americas Inc. • Atlanta, GA 30342 USA www.thedesigngroup.com • All Rights Reserved. www.simplicity.com • Made in the U.S.A. Fabriqué aux États-Unis.

To be used for individual private home use only and not for commercial or manufacturing purposes. • A usage privé seulement et non à des fins commerciales ou de production en série. • Para uso privado solamente, no se puede utilizar con propósitos de comercialización o de producción en serie.