

S9841

# Simplicity<sup>®</sup> COSTUMES



Andrea  
Schnee

Shop all the pattern brands you love @

**Simplicity<sup>®</sup>.com**

Average

## CHILDREN'S AND GIRLS' COSTUMES

**Suggested Fabrics:** Satin, Taffeta, Tissue Lame. **A Contrast 1, B Contrast 1, 3:** Sheer Fabrics such as Organza. **Interfacing:** Lightweight Fusible.

**Notions:** Costume A,B: Invisible zipper: 14" (36cm) for Child; 18" (46cm) for Girl, two size 3 sew-in snaps, two skirt hook closures, ½ yd. (0.4m) of ¼" (3mm) elastic, fabric glue. **Also for Costume A:** Single strand sequin trim: 8½ yds. (7.70m) for child's, 9 yds. (8.6m) for girls'. **Also for Costume B:** Single strand sequin trim: 8 yds. (7.50m) for child's, 9¾ yds. (8.5m) for girls'.

Sizes	3	4	5	6	7	8	10	12	14	
<b>Interfacing A,B - 20" - ½ yd. (51cm - 0.5m)</b>										

<b>Costume A</b>	45**	2½	2½	2½	3	3¾	3¾	3¾	4	4¾	Yds.
	115cm*	2.3	2.4	2.6	2.7	3.1	3.2	3.4	3.7	3.8	m

<b>Contrast 1 (Neck Ruffle, Panniers)</b>	45**	1¼	1¼	1¼	1¼	1¼	1¼	1¼	1¼	1¼	Yds.
	115cm*	1.1	1.1	1.1	1.1	1.6	1.6	1.6	1.6	1.6	m

<b>Contrast 2 (Panniers Waistband, Wings)</b>	45**	1¾	1¾	1¾	1¾	2½	2½	2½	2½	2¾	Yds.
	115cm*	1.6	1.6	1.7	1.7	2.3	2.3	2.4	2.4	2.5	m

<b>Contrast 3 (Wing Bottom)</b>	45**	¾	¾	¾	¾	1	1	1	1	1	Yds.
	115cm*	0.7	0.7	0.7	0.7	0.9	0.9	0.9	0.9	0.9	m

**Large Dot Appliqués:** 17" x 18" (42cm x 46cm) fabric remnant

**Medium Dot Appliqués:** 9" x 12" (23cm x 30cm) fabric remnant

**Small Dot Appliqués:** 8" x 9" (21cm x 23cm) fabric remnant

**Paper-backed fusible web:** 17" - 1 yd. (43cm - 0.9m)

<b>Costume B</b>	45**	1¾	1¾	2	2½	2½	2½	2½	3¾	3¾	Yds.
	115cm*	1.7	1.7	1.8	1.8	2.2	2.3	2.4	2.9	3.0	m

<b>Contrast 1 (Bodice Front Overlay, Panniers)</b>	45**	1¼	1¼	1¼	1¼	1¼	2	2	2	2	Yds.
	115cm*	1.0	1.0	1.0	1.0	1.7	1.7	1.8	1.8	1.8	m

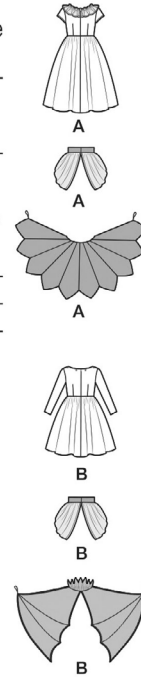
<b>Contrast 2 (Panniers Waistband, Wings, Collar)</b>	45**	1	1	1	1	1¼	1¼	1¼	1¼	1¼	Yds.
	115cm*	0.9	0.9	0.9	0.9	1.0	1.0	1.0	1.0	1.1	m

<b>Contrast 3 (Wings)</b>	45**	1¼	1¼	1¼	1¼	2	2	2½	2½	2½	Yds.
	115cm*	1.1	1.1	1.1	1.3	1.8	1.8	1.9	1.9	1.9	m

## FINISHED GARMENT MEASUREMENTS (Includes Design and Wearing Ease)

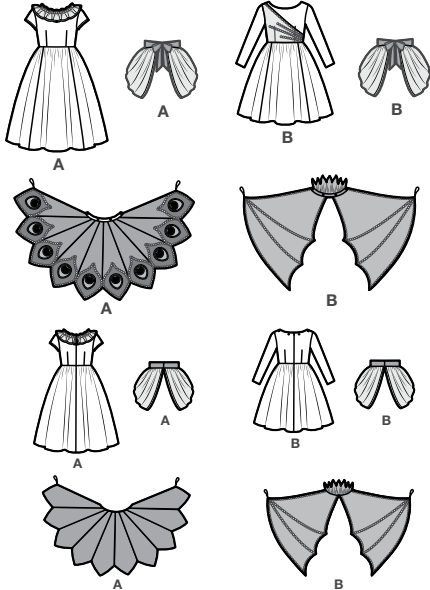
<b>A,B Chest</b>	25	26	27	28	28½	29½	31	32½	34½	Ins.
	64	66	69	71	72	75	79	83	88	cm
<b>A,B Waist</b>	22	23	24	25	24	25	26½	28	30	Ins.
	56	58	61	64	61	64	67	71	76	cm
<b>Finished back length from base of neck</b>										
<b>Dress A</b>	31	33	35	37	40	42	45	48	50	Ins.
	79	84	89	94	102	107	114	122	127	cm
<b>Dress B</b>	22¾	24	25¼	26½	27	29	32	35	37	Ins.
	58	61	64	67	69	74	81	89	94	cm

\*with nap \*\*without nap

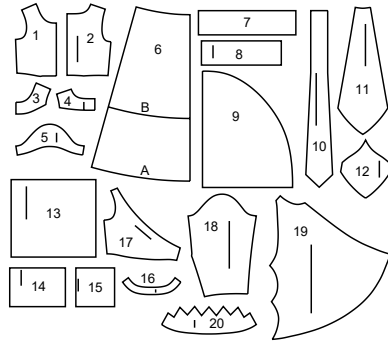


# Simplicity

Thank you for purchasing this Simplicity pattern. We made every effort to provide you with a high quality product.



20 PIECES



- 1 BODICE FRONT-A,B
- 2 BODICE BACK A,B
- 3 FRONT FACING-A,B
- 4 BACK FACING-A,B
- 5 SLEEVE-A
- 6 SKIRT FRONT AND BACK-A,B
- 7 FRONT NECK RUFFLE-A
- 8 BACK NECK RUFFLE-A
- 9 PANNIERS-A,B
- 10 PANNIERS WAISTBAND-A,B
- 11 WING-A
- 12 WING BOTTOM-A
- 13 LARGE DOT APPLIQUE-A
- 14 MEDIUM DOT APPLIQUE-A
- 15 SMALL DOT APPLIQUE-A
- 16 BAND-A,B
- 17 BODICE FRONT OVERLAY-B
- 18 SLEEVE-B
- 19 WING-B
- 20 WINGS COLLAR-B

## General Directions

### The Pattern

- SYMBOLS**
  - ↔ GRAIN LINE Place on straight grain of fabric parallel to selvage
  - ▬ PLACE SOLID LINE on fold of fabric.
  - - - CENTER FRONT OR BACK OF garment.
  - ∇ NOTCHES
  - ○ DOTS
  - CUTTING LINE
  - ▬ LENGTHEN OR SHORTEN LINES
- SEAM ALLOWANCE: 5/8" (1.5cm) unless otherwise stated is included but not printed on MULTI-SIZE PATTERNS. Mark your size with colored felt tip pen. See chart on tissue for how to use MULTI-SIZE PATTERNS.

**ADJUST IF NEEDED**

Make adjustments before placing pattern on fabric.

**TO LENGTHEN:** Cut pattern between lengthen or shorten lines. Spread pattern evenly, the amount needed and tape to paper.

**TO SHORTEN:** At lengthen or shorten lines, make an even pleat taking up amount needed. Tape in place.

When lengthen or shorten lines are not given, make adjustments at lower edge of pattern.

### Cutting/Marking

**BEFORE CUTTING:**

PRESS pattern pieces with a warm dry iron. PRE-SHRINK fabric by pre-washing washables or steam-pressing non-washables.

CIRCLE your cutting layout.

PIN pattern to fabric as shown in Cutting Layouts.

- FOR DOUBLE THICKNESS: Fold fabric with RIGHT sides together.
- FOR SINGLE THICKNESS: Place fabric RIGHT side up.
- FOR PILE, SHADED OR ONE WAY DESIGN FABRICS: Use "with nap" layouts

**AFTER CUTTING:**

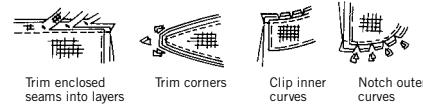
Transfer markings to WRONG side of fabric before removing pattern. Use pin and chalk method or dressmaker's tracing paper and wheel.

**To Quick Mark:**

- Snip edge of fabric to mark notches, ends of fold lines and center lines.
- Pin mark dots.

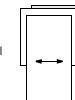
### Sewing

- SEW garment following Sewing Directions.
- PIN or machine-baste seams matching notches.
- STITCH 5/8" (1.5 cm) seams unless otherwise stated.
- PRESS seams open unless otherwise indicated clipping when necessary so seams will lie flat.
- TRIM seams to reduce bulk, as shown below.

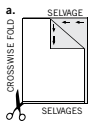


### SPECIAL CUTTING NOTES

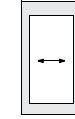
★ If layout shows a piece extending past fold, cut out all pieces except piece that extends.



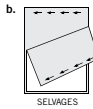
✱ Mark small arrows along both selvages indicating direction of nap or design. Fold fabric crosswise with RIGHT sides together, and cut along fold (a).



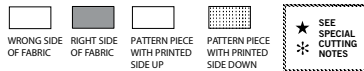
Open out fabric to single thickness. Cut extending piece on RIGHT side of fabric in position shown.



Turn one fabric layer around so arrows on both layers go in the same direction. Place RIGHT sides together (b).



## Cutting Layouts

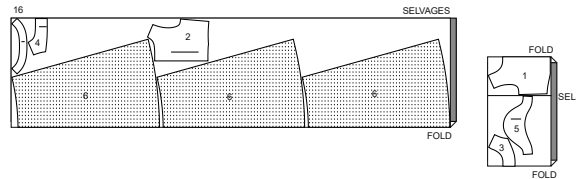


POSITION OF PATTERN PIECES MAY VARY SLIGHTLY ACCORDING TO YOUR PATTERN SIZE

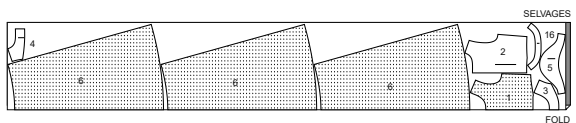
### COSTUME A

USE PIECES 1 2 3 4 5 6 16

45" (115CM) WITH NAP  
SIZES 3 4 5 6



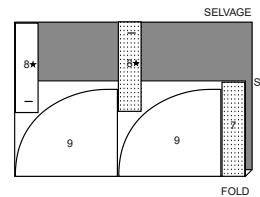
45" (115CM)  
WITH NAP  
SIZES 7 8 10 12 14



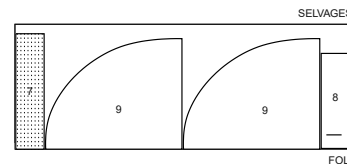
### CONTRAST 1A (NECK RUFFLE, PANNIERS)

USE PIECES 7 8 9

45" (115CM)  
WITH NAP  
SIZES 3 4 5 6



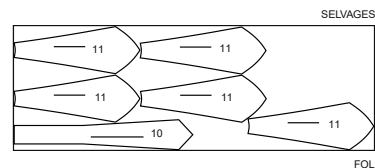
45" (115CM)  
WITH NAP  
SIZES 7 8 10 12 14



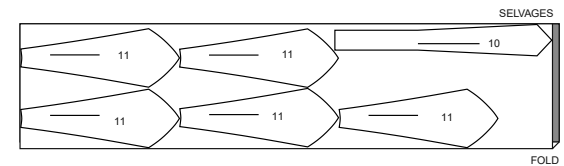
### CONTRAST 2A (PANNIERS WAISTBAND, WINGS)

USE PIECES 10 11

45" (115CM)  
WITH NAP  
SIZES 3 4 5 6



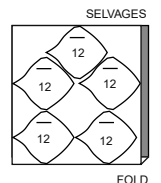
45" (115CM)  
WITH NAP  
SIZES 7 8 10 12 14



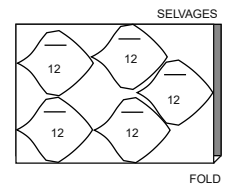
### CONTRAST 3A (WING BOTTOM)

USE PIECES 12

45" (115CM)  
WITH NAP  
SIZES 3 4 5 6



45" (115CM)  
WITH NAP  
SIZES 7 8 10 12 14



CUTTING LAYOUTS CONTINUED ON PAGE 2

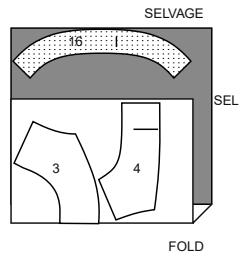
# S9841

2 of 5

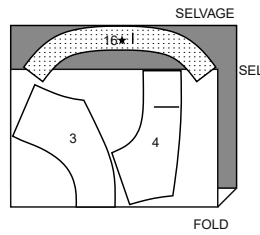
## INTERFACING A,B

USE PIECES 3 4 16

20" (51CM)  
SIZES 3 4 5 6



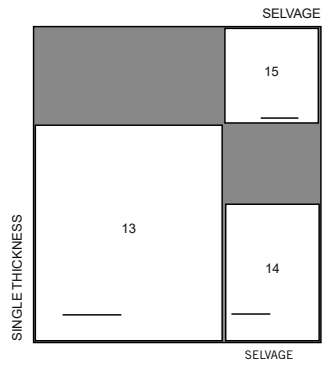
20" (51CM)  
SIZES 7 8 10 12 14



## PBF WEBBING A

USE PIECES 13 14 15

22" (56CM) WITHOUT NAP  
SIZES 3 4 5 6



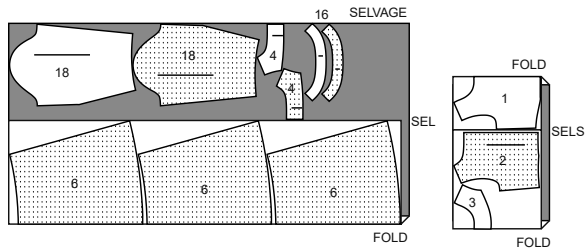
22" (56CM)  
WITH NAP  
SIZES 7 8 10 12 14



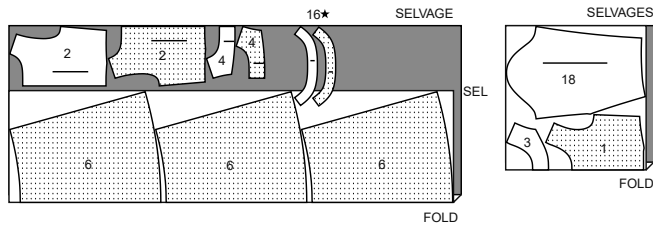
## COSTUME B

USE PIECES 1 2 3 4 6 16 18

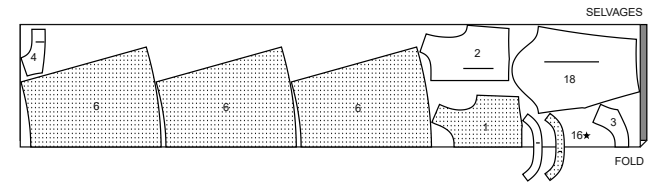
45" (115CM)  
WITH NAP  
SIZES 3 4 5 6



45" (115CM)  
WITH NAP  
SIZES 7 8 10



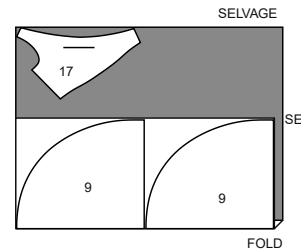
45" (115CM)  
WITH NAP  
SIZES 12 14



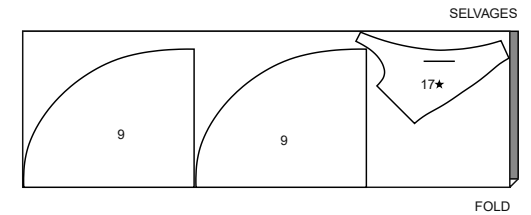
## CONTRAST 1B (BODICE OVERLAY, PANNIERS)

USE PIECES 9 17

45" (115CM)  
WITH NAP  
SIZES 3 4 5 6



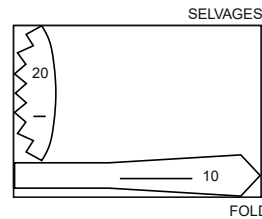
45" (115CM)  
WITH NAP  
SIZES 7 8 10 12 14



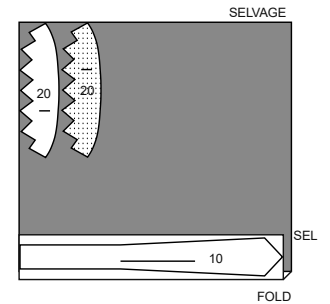
## CONTRAST 2B (PANNIERS WAISTBAND, WINGS COLLAR)

USE PIECES 10 20

45" (115CM)  
WITH NAP  
SIZES 3 4 5 6



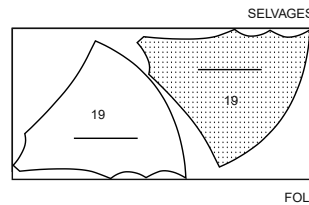
45" (115CM)  
WITH NAP  
SIZES 7 8 10 12 14



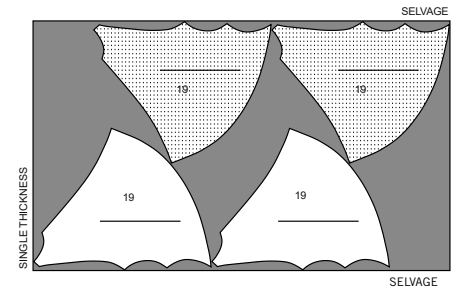
## CONTRAST 3B (WINGS)

USE PIECES 19

45" (115CM)  
WITH NAP  
SIZES 3 4 5 6



45" (115CM) WITH NAP  
SIZES 7 8 10 12 14



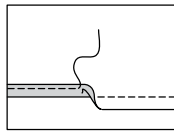
## SEWING TUTORIALS



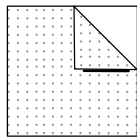
Build your skills viewing short, easy-to-follow videos at [simplicity.com/sewingtutorials](http://simplicity.com/sewingtutorials)



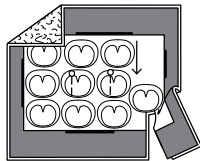
APPLY APPLIQUÉ



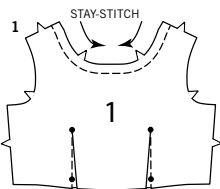
EDGE FINISH



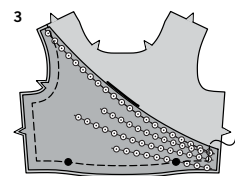
INTERFACING



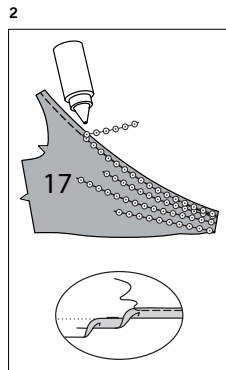
PREPARE APPLIQUÉ



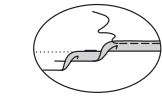
1



3



2



## Sewing Directions

FABRIC KEY

Read **General Directions** on page 1 before you begin.

Sewing methods in **BOLD TYPE** have Sewing Tutorial Video available. Scan QR CODE to watch videos:

**EASE/GATHER** – see **Gathering**: “sewing two row gathers” video.

**FLAT DART** – see **Darts**: “sewing flat dart” video.

**FRENCH SEAM** – see **Seams**: “how to sew french seams” video.

**INVISIBLE ZIPPER** – see **Zippers**: “sewing an invisible zipper” video.

**NARROW HEM** – see **Hems**: “sewing narrow hems” video.

**SLEEVE** – see **Armholes/Sleeves**: “sewing a set in sleeve” video.

**SLIP STITCH** – see **Hand Stitching**: “how to slip stitch” video.

**STAYSTITCH** – see **Machine Stitches**: “how to do stay stitching” video.

**STITCH IN THE DITCH** – see **Machine Stitches**: “how to stitch in the ditch” video.

**TRIM SEAM** – see **Seams**: “how to trim, clip and layer seams” video.

**UNDERSTITCH** – see **Machine Stitches**: “how to understitch” video.

## GLOSSARY

SEWING TERMS APPEARING IN **BOLD ITALIC TYPE** IN SEWING INSTRUCTIONS ARE EXPLAINED BELOW.

**APPLY APPLIQUÉ** – Pin appliqué(s) to project as instructed in Sewing Directions. Be sure to clear all seam allowances. Fuse appliqué(s) in place, following manufacturer’s directions. If you prefer, zigzag stitch close to outer edges.

**EDGE FINISH** – Stitch 1/4” (6mm) from edge, turn under edge along stitching and stitch or zig-zag, or overlock/serge raw edges.

**INTERFACING** – Pin interfacing to **WRONG** side of fabric. Fuse interfacing in place following manufacturer’s directions.

**PREPARE APPLIQUÉ** – Apply paper backed fusible web to **WRONG** side of appliqué fabric following manufacturer’s directions. Cut appliqué tissue block along outer solid line. Pin pattern to **RIGHT** side of prepared fabric. Cut out each appliqué. Transfer markings to **RIGHT** side of appliqué using a washable fabric marking pen or pencil.

**PATTERN PIECES WILL BE IDENTIFIED BY NUMBERS THE FIRST TIME THEY ARE USED.**

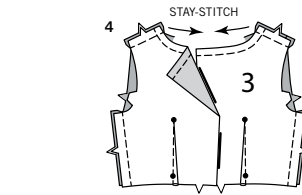
**STITCH 5/8” (1.5CM) SEAMS WITH RIGHT SIDES TOGETHER UNLESS OTHERWISE STATED.**

## COSTUME A, B

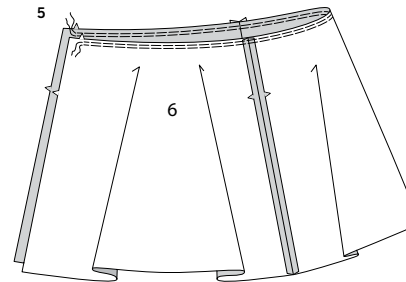
**1. STAYSTITCH** neck edge of bodice front (1). Make **FLAT DART**(s). Press darts toward center.

**2. FOR VIEW B – NARROW HEM** upper edge of bodice front overlay (17). Cut a piece of single strand sequin trim the length of the upper edge and the lengths of each of the placement lines for trim. On **OUTSIDE**, carefully adhere trim to upper edge and centered on placement lines, using fabric glue.

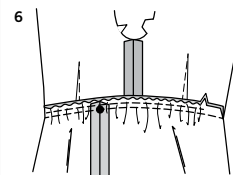
**3.** On **OUTSIDE**, pin bodice front overlay to bodice front, matching large dots and notches, with raw edges even. Baste.



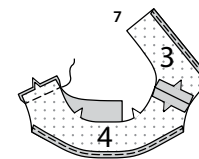
4



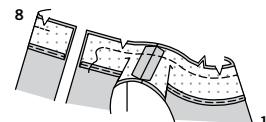
6



6

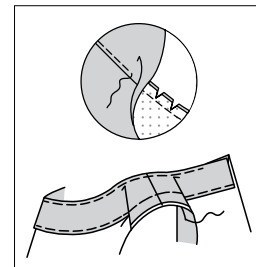


7

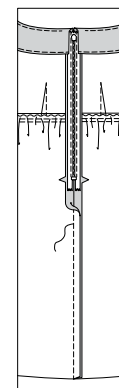


8

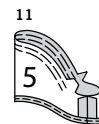
9



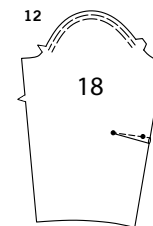
9



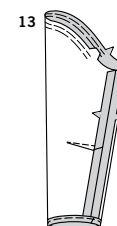
10



11



12



13

## CONTINUE AS FOLLOWS FOR BOTH VIEWS

**4. STAYSTITCH** neck edge of bodice back (2). Make **FLAT DART**(s). Press darts toward center. Stitch bodice front to bodice back at side and shoulder edges.

**5.** With **RIGHT** sides together and raw edges even, pin skirt front and back (6) sections together at side edges, leaving center back edges open. Stitch. **GATHER** upper edge between the notches.

**6.** With **RIGHT** sides together and raw edges even, pin upper edge of skirt to lower edge of bodice, placing side front seams at large dots, pulling up gathering stitches to fit. Baste; stitch. Press seam toward bodice.

**7.** Apply **INTERFACING** to front facing (3) and back facing (4). Stitch front facing to back facing at shoulder edges. **EDGE FINISH** lower edge.

**8.** On **OUTSIDE**, pin facing to bodice, matching centers and notches. Stitch to within 2-1/2” (6.3cm) of back opening edges.

**9. UNDERSTITCH** the facing. Turn facing to inside; press. Baste facing to bodice at armhole edges.

**10.** Insert **INVISIBLE ZIPPER** placing top stop 3/4” (2cm) below raw neck edge and finishing with facing.

## SLEEVE A

**11.** **EASE** upper edge of sleeve (5) between the notches. Stitch underarm seam. **NARROW HEM** lower edge.

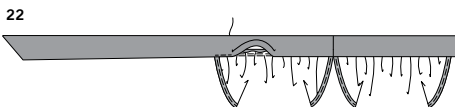
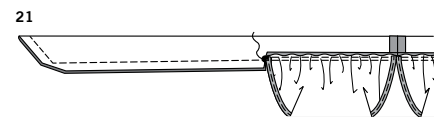
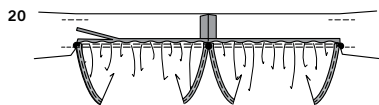
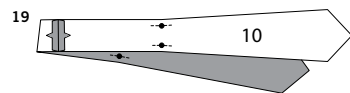
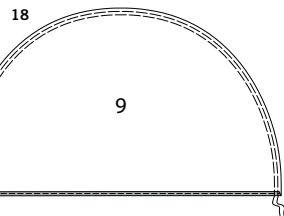
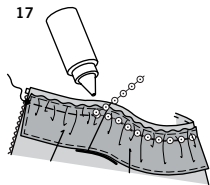
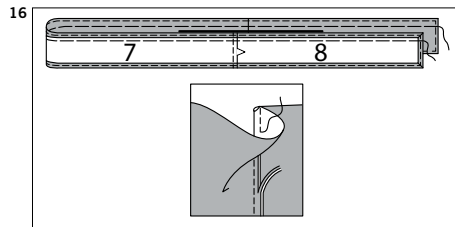
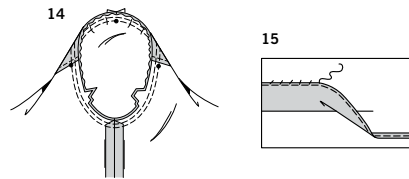
## SLEEVE B

**12.** Make **FLAT DART** on sleeve (18). Press toward lower edge. **EASE** top of sleeve between the notches.

**13.** Stitch underarm edges together. **NARROW HEM** lower edge.

S9841

4 of 5



## CONTINUE AS FOLLOWS FOR BOTH VIEWS

**14.** Set in **SLEEVE** matching dots and notches and adjusting ease.

**15.** Mark length.

Press up hem along marking.

Mark depth of hem; trim evenly.

To finish the raw edge, stitch under 1/4" (6mm), zigzag, OR overlock/serge.

**SLIP STITCH** hem in place.

**16. FOR VIEW A** – Pin front neck ruffle (7) to back neck ruffle (8)

sections at ends. Stitch in a **FRENCH SEAM**.

**NARROW HEM** upper, lower, and back edges.

**GATHER** along gathering line.

**17.** On **OUTSIDE**, pin neck ruffle to bodice, matching small dots and seams, placing gathering line 1/4" (6mm) from neck edge, pulling up gathering stitches to fit. Stitch over gathering line. Cut a piece of single strand sequin trim the length of the stitched gathering line. On **OUTSIDE**, carefully adhere trim to ruffle centered on gathering lines, using fabric glue.

## PANNIERS

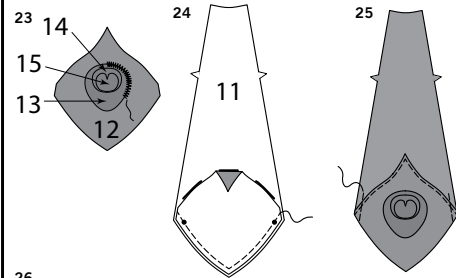
**18. NARROW HEM** straight edge of panniers (9). **GATHER** curved edge.

**19.** Stitch panniers waistband (10) sections together at center back edges. To reinforce edges at the large dots, stitch along seam line for about 1" (2.5cm) each side dots, stitching through dots, as shown.

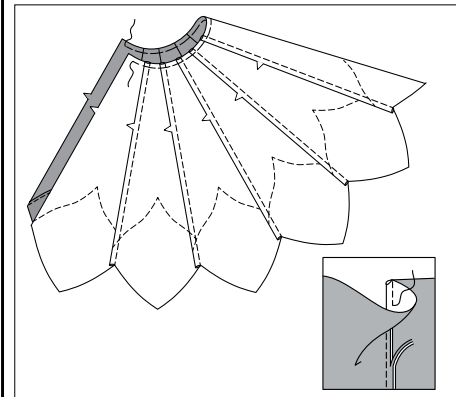
**20.** With **RIGHT** sides together and raw edges even, pin panniers to waistband, placing finished edges between the center back and the large dots, pulling up gathering stitches to fit. Baste; stitch. Clip seam allowance of waistband to large dots. **TRIM SEAM** to 1/4" (6mm) between inner large dots. Do not trim seam allowance of tie ends. Press seam toward waistband, pressing band out.

**21.** Fold band with **RIGHT** sides together with raw edges even, matching large dots. Pin. Stitch across tie ends of band from fold to large dots, back-stitching at dots to reinforce the seam. **TRIM SEAM**.

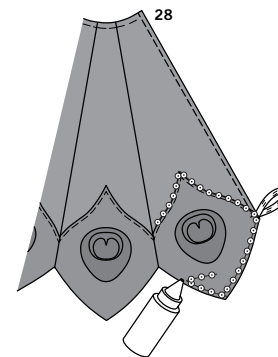
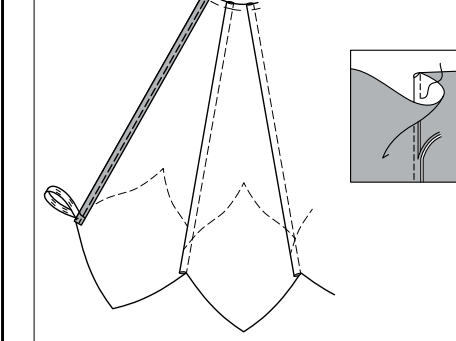
**22.** Turn tie ends **RIGHT** side out; press, press under 1/2" (1.3cm) on inner edge of band. On **INSIDE**, pin pressed edge of band over seam, placing pins on **OUTSIDE**. On **OUTSIDE**, **STITCH IN THE DITCH** of the seam, catching in pressed edge of band on the **INSIDE**. OR if you prefer, press under 5/8" (1.5cm) on inner edge of band, and **SLIP STITCH** over seam.



26



27



## WING A

**23.** From fabric remnant, **PREPARE APPLIQUÉ** medium dot appliqué (14). **PREPARE APPLIQUÉ**(s) small dot appliqué (15) and large dot appliqué (13), having each block in remnants of a separate contrast fabric. *Preparing will be shown using the medium dot appliqué block.*

**APPLY APPLIQUÉ** small dot to each medium dot along broken lines, and medium dot to each large dot along broken lines. On **OUTSIDE**, **APPLY APPLIQUÉ** large dot to each wing bottom (12) along stitching lines. Fuse, and zigzag stitch in place with contrasting thread. *Zigzag stitching will not be shown in the following illustrations.*

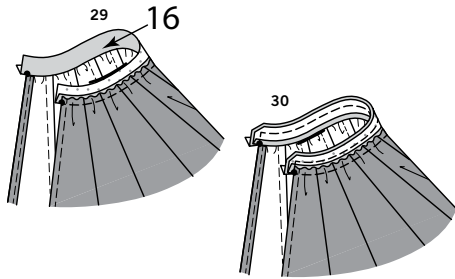
**24.** Pin **RIGHT** side of wing bottom to **WRONG** side of wing (11) with raw edges even. Stitch lower edge in a 3/8" (1cm) seam. **TRIM SEAM**.

**25.** Turn wing bottom to **OUTSIDE**; press. Stitch wing bottom in place 1/8" (3mm) from placement line. Baste raw edges together.

**26. FRENCH SEAM** finished wing panels together at side edges, leaving outer edges free. **GATHER** 1/4" (6mm) from upper edge between outer seam lines.

**27.** Wrap wrist of child with elastic, comfortably, bringing ends together. Cut ends of elastic 1" (2.5cm) from where they meet at wrist. Fold each piece in half, bringing ends together. On **OUTSIDE**, baste elastic to outer edges of wing at small dots. **NARROW HEM** outer edges.

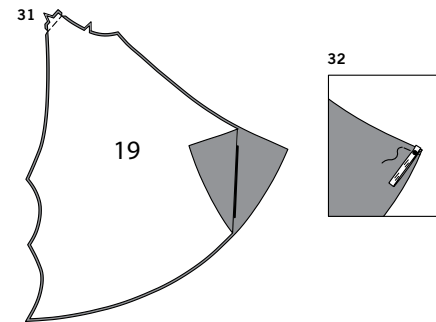
**28.** Cut pieces of single strand sequin trim to cover seam lines, placement lines, and finished edges of wing bottom panels, keeping upper seam allowances free. Adhere to wing using fabric glue. This will be the front of the wing.



**29.** Apply **INTERFACING** to band (16). With **RIGHT** sides together, pin band to back of wing, matching centers, placing finished edges of wing at small dots, pulling up gathering stitches to fit. (Ends of band extend 3/8" (1cm) beyond finished edges of wing.) Stitch in a 3/8" (1cm) seam. Press band out, pressing seam toward band.

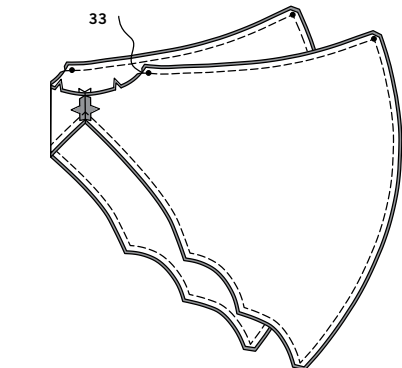
**30.** Press under 1/4" (6mm) on marked edge of band facing. With **RIGHT** sides together and raw edges even, pin band facing to band, matching centers and small dots. Stitch upper edge and end in a 3/8" (1cm) seam. **TRIM SEAM.**

#### WING B



**31.** Stitch two wing (19) sections together at center back edges in a 3/8" (1cm) seam. **TRIM SEAM.**

**32.** Wrap wrist of child with elastic, comfortably, bringing ends together. Cut ends of elastic 1" (2.5cm) from where they meet at wrist. Fold each piece in half, bringing ends together. On **OUTSIDE**, baste elastic to outer edges of wing at small dots.



**33.** Stitch wing facing sections together in the same manner as wing. With **RIGHT** sides together and raw edges even, pin facing to wing. Stitch in a 3/8" (1cm) seam, leaving notched edge between the small dots open. **TRIM SEAM.**

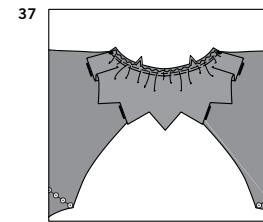
**34.** Turn wing; press, pressing out elastic bands. Baste raw edges together and along placement lines for trim. For **OUTSIDE** and facing of wing, cut pieces of single strand sequin trim the length of the placement lines, and outer edge of wing. Adhere trim to wing and wing facing, using fabric glue.



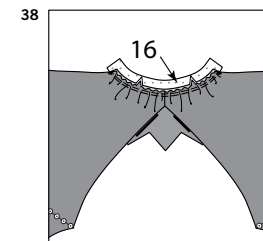
**35.** Pin wings collar (20) to wings collar facing sections with **RIGHT** sides together; stitch in a 3/8" (1cm) seam, leaving notched edges open. **TRIM SEAM.**



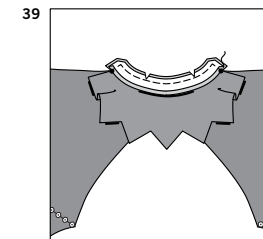
**36.** Turn collar; press. **GATHER** 1/4" (6mm) from notched edges.



**37.** Pin collar to back of wing, matching small dots and notches, pulling up gathering stitches to fit. Baste.

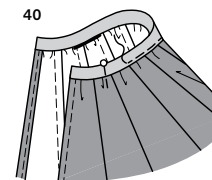


**38.** Apply **INTERFACING** to band (16). With **RIGHT** sides together, pin band to back of wing (over collar), matching centers and notches. (Ends of band extend 3/8" (1cm) beyond finished edges of wing.) Stitch in a 3/8" (1cm) seam. Press band out, pressing seam toward band.

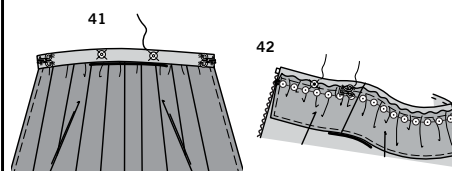


**39.** Press under 1/4" (6mm) on notched edge of band facing. With **RIGHT** sides together and raw edges even, pin band facing to band, matching centers and small dots. Stitch upper edge and end in a 3/8" (1cm) seam. **TRIM SEAM.**

#### CONTINUE AS FOLLOWS FOR BOTH VIEWS



**40.** Turn band; press. Pin pressed edge of band over seam, placing pins on wing front. On back, **STITCH IN THE DITCH** of the seam, catching in pressed edge of band on the front of wing.



**41.** Fold band to front side of wing; press, (pressing up collar for View B). On front of band, stitch knob sections of snaps at small dots, and hook sections of bar/hook closures to each end.

**42.** On **OUTSIDE** of back bodice, stitch socket sections of snaps at inner small dots, and bar sections of bar/hook closures over remaining small dots (under ruffle for View A).



# Congrats!

You've completed your sewing adventure

---

**SHARE  
YOUR** LOOK



Post your pattern and tag us  
**@simplicity\_creative\_group** and **#simplicitypatterns**  
for a chance to be featured on our social media.

Look for more PDF patterns at **simplicity.com**

Have a question or need help with your sewing project call us at  
1-888-588-2700



Simplicity ©2023 a division of IG Design Group Americas Inc. • Atlanta, GA 30342 USA [www.thedesigngroup.com](http://www.thedesigngroup.com) • All Rights Reserved. [www.simplicity.com](http://www.simplicity.com) • Made in the U.S.A. Fabriqué aux États-Unis.

To be used for individual private home use only and not for commercial or manufacturing purposes. • A usage privé seulement et non à des fins commerciales ou de production en série. • Para uso privado solamente, no se puede utilizar con propósitos de comercialización o de producción en serie.