

S9832

Simplicity



A



B



Average

GIRLS' AND BOYS' JACKETS

Suggested Fabrics: Double-Faced Fabrics, Fleece, Sherpa, Sherpa Suede. **Lining A** in Cotton Blends, Polyester Blends.

Notions: **A:** Four 1" (2.5cm) buttons. **B:** Six 1" (2.5cm) buttons.

Sizes	7	8	10	12	14	
BODY MEASUREMENTS: Select pattern size based on body measurements						
Chest	26	27	28½	30	32	Ins.
Waist	23	23½	24½	25½	26½	"
Hip	27	28	30	32	34	"
Back-neck to waist	11½	12	12¾	13½	14¼	"
Height	50	52	56	58½	61	"

Jacket A						
60"*	1%	1½	1½	1%	1¾	Yds.
Lining A						
45"***	½ yd.					

Jacket B						
60"*	1%	1%	1¼	1¼	1%	Yds.

FINISHED GARMENT MEASUREMENTS (Includes Design and Wearing Ease)

A,B Chest	33	34	35½	37	39	Ins.
A,B Waist	34	35	36½	38	40	"
Width, lower edge						
Jacket A	35¾	36¾	38¾	40¾	42¾	Ins.
Jacket B	34½	35½	37½	39½	41½	"
Finished back length from base of neck						
Jacket A	20¾	22¼	24¾	27¼	29¼	Ins.
Jacket B	14¾	15¾	17¾	19¾	21¼	"

*with nap **without nap

Moins Facile

VESTES POUR FILLETES ET GARÇONNETS

Tissus Conseillés: Tissu double face, Molleton, Sherpa, Sherpa suède. Doublure A en Cottonnades, Mélanges de polyester.

Mercerie: **A:** 4 boutons de 2.5cm. **B:** 6 boutons de 2.5cm.

Tailles	7	8	10	12	14	
MESURES DU CORPS: Choisissez la taille du patron basée sur les mesures du corps						
Poitrine	66	68.5	72.5	76	81.5	cm
Taille	58.5	59.5	62	65	67.5	"
Hanches	68.5	71	76	81.5	86.5	"
Dos du cou à la taille	29	30.5	32.5	34.5	36	"
Hauteur	127	132	143	149	155	"

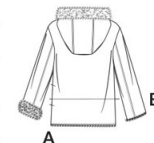
Veste A						
150cm*	1.3	1.3	1.4	1.5	1.6	m
Doublure A						
115cm**	0.3m.					

Veste B						
150cm*	1.0	1.0	1.1	1.1	1.3	m

MESURES DES VÊTEMENTS FINI (Motif et aisance de port compris)

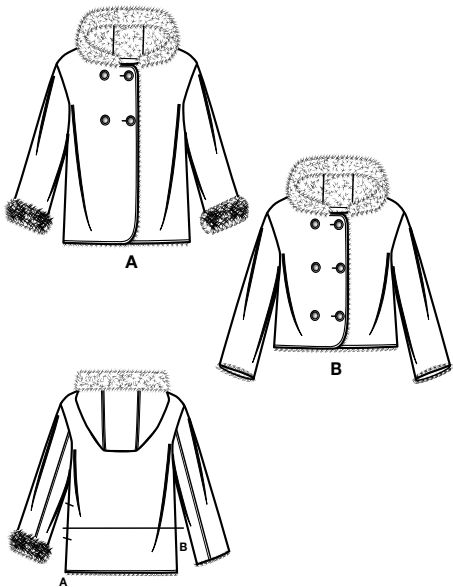
A,B Poitrine	84	86	90	94	99	cm
A,B Taille	86	89	92	97	102	"
Largeur à l'ourlet						
Veste A	91	93	98	104	109	cm
Veste B	88	90	95	100	105	"
Longueur finie – dos, votre nuque à l'ourlet						
Veste A	53	57	63	69	74	cm
Veste B	37	40	45	50	54	"

*avec sens **sans sens

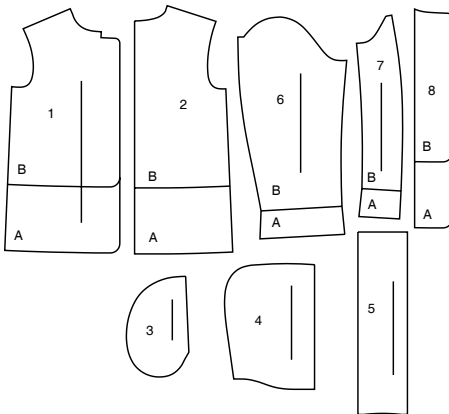


Simplicity®

Thank you for purchasing this Simplicity pattern. We made every effort to provide you with a high quality product.



6 PIECES



- 1 Front-A,B
- 2 Back-A,B
- 3 Pocket-A
- 4 Hood-A,B
- 5 Hood Center-A,B
- 6 Upper Sleeve-A,B
- 7 Under Sleeve-A,B
- 8 Buttonhole Guide-A,B

General Directions

The Pattern

- SYMBOLS**
- GRAIN LINE Place on straight grain of fabric parallel to selvage
 - PLACE SOLID LINE on fold of fabric.
 - CENTER FRONT OR BACK of garment.
 - NOTCHES
 - DOTS
 - CUTTING LINE
 - LENGTHEN OR SHORTEN LINES

SEAM ALLOWANCE: 5/8" (1.5cm) unless otherwise stated is included but not printed on MULTI-SIZE PATTERNS. Mark your size with colored felt tip pen. See chart on tissue for how to use MULTI-SIZE PATTERNS.

ADJUST IF NEEDED

Make adjustments before placing pattern on fabric.

TO LENGTHEN:
Cut pattern between lengthen or shorten lines. Spread pattern evenly, the amount needed and tape to paper.

TO SHORTEN:
At lengthen or shorten lines, make an even pleat taking up amount needed. Tape in place.

When lengthen or shorten lines are not given, make adjustments at lower edge of pattern.

Cutting/Marking

BEFORE CUTTING:

PRESS pattern pieces with a warm dry iron. PRE-SHRINK fabric by pre-washing washables or steam-pressing non-washables.

CIRCLE your cutting layout.

PIN pattern to fabric as shown in Cutting Layouts.

• FOR DOUBLE THICKNESS: Fold fabric with RIGHT sides together.

• FOR SINGLE THICKNESS: Place fabric RIGHT side up.

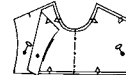
• FOR PILE, SHADED OR ONE WAY DESIGN FABRICS: Use "with nap" layouts

AFTER CUTTING:

Transfer markings to WRONG side of fabric before removing pattern. Use pin and chalk method or dressmaker's tracing paper and wheel.

To Quick Mark:

- Snip edge of fabric to mark notches, ends of fold lines and center lines.
- Pin mark dots.



Sewing

- SEW garment following Sewing Directions.
- PIN or machine-baste seams matching notches.
- STITCH 5/8" (1.5 cm) seams unless otherwise stated.
- PRESS seams open unless otherwise indicated clipping when necessary so seams will lie flat.
- TRIM seams to reduce bulk, as shown below.



Trim enclosed seams into layers



Trim corners



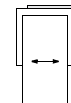
Clip inner curves



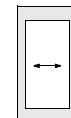
Notch outer curves

SPECIAL CUTTING NOTES

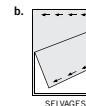
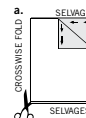
★ If layout shows a piece extending past fold, cut out all pieces except piece that extends.



Open out fabric to single thickness. Cut extending piece on RIGHT side of fabric in position shown.

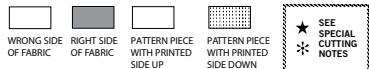


✱ Mark small arrows along both selvages indicating direction of nap or design. Fold fabric crosswise with RIGHT sides together, and cut along fold (a).



Turn one fabric layer around so arrows on both layers go in the same direction. Place RIGHT sides together (b).

Cutting Layouts

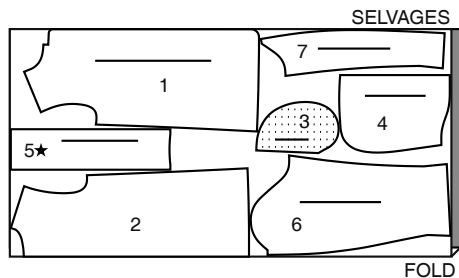


POSITION OF PATTERN PIECES MAY VARY SLIGHTLY ACCORDING TO YOUR PATTERN SIZE

COAT A

USE PIECES 1 2 3 4 5 6 7

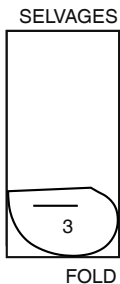
60" (150CM) WITH NAP ALL SIZES



LINING

USE PIECE 3

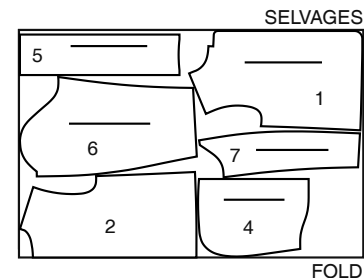
45" (115CM) WITHOUT NAP ALL SIZES



COAT B

USE PIECES 1 2 4 5 6 7

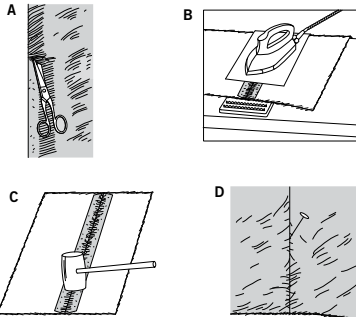
60" (150CM) WITH NAP ALL SIZES



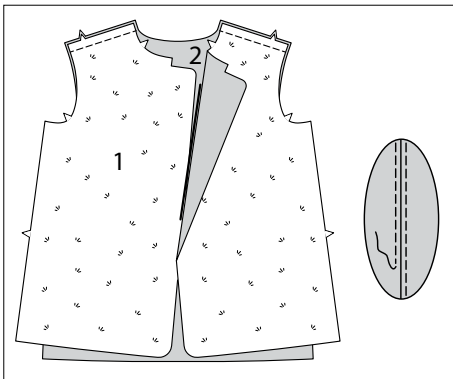
SEWING TUTORIALS



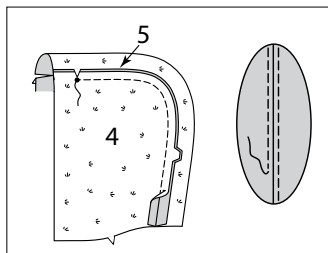
Build your skills viewing short, easy-to-follow videos at simplicity.com/sewingtutorials



1



2



Sewing Directions

FABRIC KEY RIGHT SIDE WRONG SIDE INTERFACING LINING Lining

Read **General Directions** on page 1 before you begin.

Sewing methods in **BOLD TYPE** have Sewing Tutorial Video available. Scan QR CODE to watch videos:

TOPSTITCH - see "how to topstitch" video.

SIMPLY THE BEST SEWING TECHNIQUES FOR FUR FABRICS

- A. Hand-baste seams to prevent slipping. Gather by hand. For high pile fabrics, shear away 1/2" (1.3cm) within the seam allowance.
- B. Never place iron directly on fur fabric. Press on **WRONG** side, using a velvet board and cloth.]
- C. Heavier fur fabrics may need some pounding with a heavy object to keep seams and edges flat.
- D. On **OUTSIDE**, with a pin, pick the pile up along the seams. **IMPORTANT:** When using deep pile furs, use a longer stitch and looser tension when stitching. Release the presser foot of the machine if the fabric is especially thick.

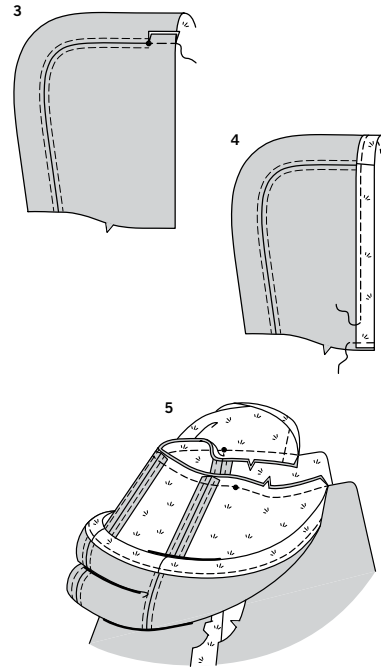
PATTERN PIECES WILL BE IDENTIFIED BY NUMBERS THE FIRST TIME THEY ARE USED.

STITCH SEAMS WITH RIGHT SIDES TOGETHER UNLESS OTHERWISE STATED.

JACKET A, B

NOTE: View A will be illustrated unless otherwise indicated.

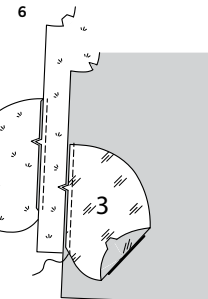
1. With **RIGHT** sides together, stitch front (1) to back (2) at shoulder seams. Press seams open and **TOPSTITCH** along each side of seam, as shown.
2. With **RIGHT** sides together, stitch hood (4) sections to each side of hood center (5), matching notches. Stitch ending at small dot. Back-stitch at small dot to reinforce seam. Clip to small dot being careful not to clip through stitching. Press hood seams open. **TOPSTITCH** along each side of seams.



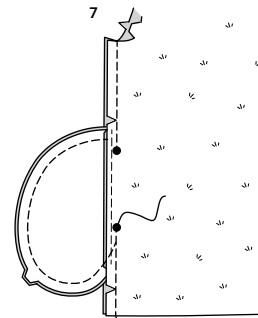
3. With **WRONG** sides together, stitch remaining seams from small dot to raw edge, as shown. Press. Trim seam.

4. Turn front edge of hood to **OUTSIDE**, along fold line, forming facing. Press. Stitch hood facing 1/4" (6mm) from raw edge. Baste lower edges together.

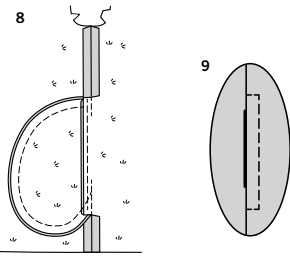
5. With **RIGHT** sides together, pin hood to neck edge matching centers and notches, placing small dots at shoulder seams. Stitch. Press seam down.



6. Stitch one pocket (3) lining section front, at each side, in a 1/4" (6mm) seam. Press seams toward pockets. Stitch one pocket fabric section back, at each side, in a 1/4" (6mm) seam. Press seams toward pockets.



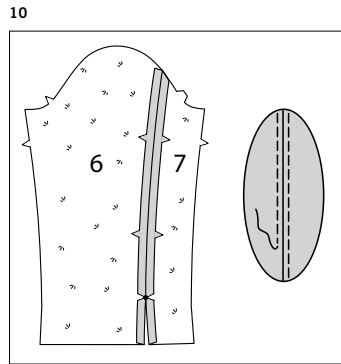
7. Stitch front and back together at sides, leaving opening between large dots. Stitch pocket edges together to side seams. Clip back seam allowances above and below pockets.



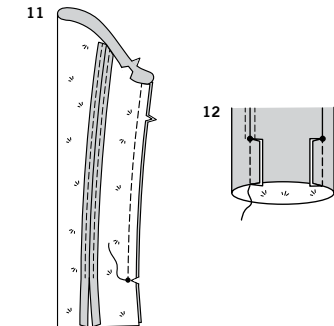
8. Turn pockets toward front along seamline; press. Pressing seam open above and below clips.

9. TOPSTITCH pocket opening, keeping pocket free.

SLEEVE A



10. With RIGHT sides together, pin upper sleeve (6) to under sleeve (7) along outer edge, matching notches. Stitch ending at small dot. Back-stitch. Clip to small dot. Press sleeve seam open. TOPSTITCH along each side of seam.

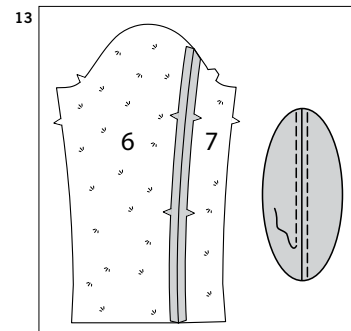


11. Stitch remaining sleeve seam ending at small dot. Back-stitch. Clip to small dot.

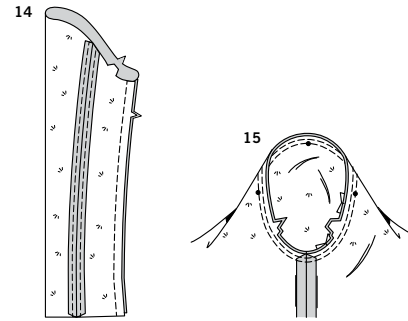
12. With WRONG sides together, stitch lower seams from small dot to raw edge.

SLEEVE B

NOTE: If you prefer to turn your sleeve cuffs up, as shown on envelope, follow sleeve A instructions.



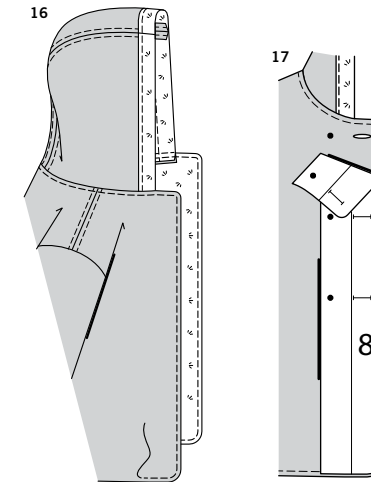
13. With RIGHT sides together, pin upper sleeve (6) to under sleeve (7), matching notches. Stitch. Press seam open. TOPSTITCH along each side of seam.



14. Stitch remaining sleeve seam.

CONTINUE AS FOLLOWS FOR ALL VIEWS

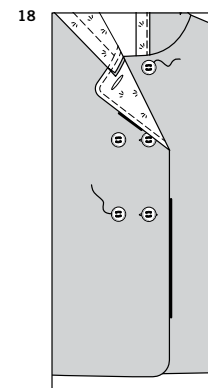
15. With right sides together, pin sleeve to armhole edge; baste. Stitch. Stitch again 1/4" (6mm) away in seam allowance. Trim close to stitching below notches. Press seam allowances flat. Turn seam allowances toward sleeve.



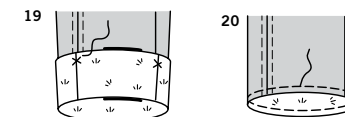
16. On OUTSIDE, TOPSTITCH neck, front and lower edges, catching in hood seam allowance on INSIDE.

NOTE: Instructions indicate a RIGHT over LEFT opening for the jacket. If you prefer to lap LEFT over RIGHT, reverse the following steps.

17. To mark buttonholes on RIGHT front, place buttonhole guide (8) along finished edge of garment, matching centers, as shown. Transfer buttonhole and small dot markings. Make buttonholes at markings.



18. Lap RIGHT front over LEFT, matching centers. Sew buttons under buttonholes. Sew buttons to RIGHT front at markings.



19.VIEW A- Turn lower edge of sleeve to OUTSIDE along foldline, forming cuff. Press. Hand-tack cuff at seams OR stitch 1/4" (6mm) from raw edge to secure.

20.VIEW B- TOPSTITCH lower edge of sleeve.



Congrats!

You've completed your sewing adventure

**SHARE
YOUR** LOOK



Post your pattern and tag us
@simplicity_creative_group and **#simplicitypatterns**
for a chance to be featured on our social media.

Look for more PDF patterns at **simplicity.com**

Have a question or need help with your sewing project call us at
1-888-588-2700



Simplicity ©2023 a division of IG Design Group Americas Inc. • Atlanta, GA 30342 USA www.thedesigngroup.com • All Rights Reserved. www.simplicity.com • Made in the U.S.A. Fabriqué aux États-Unis.

To be used for individual private home use only and not for commercial or manufacturing purposes. • A usage privé seulement et non à des fins commerciales ou de production en série. • Para uso privado solamente, no se puede utilizar con propósitos de comercialización o de producción en serie.