

S9831

Simplicity®



A



B



Average

## CHILDREN'S AND GIRLS' JACKET IN TWO LENGTHS

**Suggested Fabrics:** Corduroy, Cotton Blends, Gabardine, Lightweight Denim, Linen Blends, Stretch Wovens, Tweed, Twill, Wool Blends. **Lining:** Cotton Blends, Polyester Blends. **Interfacing:** Lightweight Fusible.

**Notions:** A: Three ¾" (2cm) buttons. B: Two ¾" (2cm) buttons.

| Sizes | 3 | 4 | 5 | 6 | 7 | 8 | 10 | 12 | 14 |
|-------|---|---|---|---|---|---|----|----|----|
|-------|---|---|---|---|---|---|----|----|----|

## BODY MEASUREMENTS: Select pattern size based on body measurements

|                    |     |    |     |     |     |     |     |     |     |      |
|--------------------|-----|----|-----|-----|-----|-----|-----|-----|-----|------|
| Chest              | 22  | 23 | 24  | 25  | 26  | 27  | 28½ | 30  | 32  | Ins. |
| Waist              | 20½ | 21 | 21½ | 22  | 23  | 23½ | 24½ | 25½ | 26½ | "    |
| Hip                | —   | 24 | 25  | 26  | 27  | 28  | 30  | 32  | 34  | "    |
| Back-neck to waist | 9   | 9½ | 10  | 10½ | 11½ | 12  | 12¾ | 13½ | 14½ | "    |
| Approx. Height     | 38  | 41 | 44  | 47  | 50  | 52  | 56  | 58½ | 61  | "    |

|          |      |    |    |    |    |    |    |    |    |    |      |
|----------|------|----|----|----|----|----|----|----|----|----|------|
| Jacket A | 45** | 1½ | 1½ | 1½ | 1½ | 1¾ | 1¾ | 2  | 2½ | 2½ | Yds. |
|          | 60** | 1¼ | 1¼ | 1¼ | 1¼ | 1½ | 1½ | 1½ | 1½ | 1¾ | "    |

|          |       |    |    |    |    |    |    |    |    |    |   |
|----------|-------|----|----|----|----|----|----|----|----|----|---|
| Lining A | 45*** | 1½ | 1½ | 1½ | 1½ | 1½ | 1½ | 1½ | 1½ | 1½ | " |
|----------|-------|----|----|----|----|----|----|----|----|----|---|

|               |     |   |   |   |   |   |   |   |   |   |   |
|---------------|-----|---|---|---|---|---|---|---|---|---|---|
| Interfacing A | 20" | ¾ | ¾ | ¾ | ¾ | 1 | 1 | 1 | 1 | 1 | " |
|---------------|-----|---|---|---|---|---|---|---|---|---|---|

|          |      |    |    |    |    |    |    |    |    |    |      |
|----------|------|----|----|----|----|----|----|----|----|----|------|
| Jacket B | 45** | 1¼ | 1¼ | 1¼ | 1½ | 1½ | 1½ | 1½ | 1¾ | 1¾ | Yds. |
|          | 60** | 1  | 1  | 1½ | 1½ | 1¾ | 1¾ | 1½ | 1½ | 1½ | "    |

|          |       |   |   |   |   |    |    |    |    |    |   |
|----------|-------|---|---|---|---|----|----|----|----|----|---|
| Lining B | 45*** | ¾ | 1 | 1 | 1 | 1¼ | 1¼ | 1¼ | 1½ | 1½ | " |
|----------|-------|---|---|---|---|----|----|----|----|----|---|

|               |     |   |   |   |   |   |   |   |   |   |   |
|---------------|-----|---|---|---|---|---|---|---|---|---|---|
| Interfacing B | 20" | ¾ | ¾ | ¾ | ¾ | 1 | 1 | 1 | 1 | 1 | " |
|---------------|-----|---|---|---|---|---|---|---|---|---|---|

## FINISHED GARMENT MEASUREMENTS (Includes Design and Wearing Ease)

|           |     |     |     |     |     |     |    |     |     |      |
|-----------|-----|-----|-----|-----|-----|-----|----|-----|-----|------|
| A,B Chest | 28½ | 29½ | 30½ | 31½ | 32½ | 33½ | 35 | 36½ | 38½ | Ins. |
|-----------|-----|-----|-----|-----|-----|-----|----|-----|-----|------|

|           |     |     |     |     |     |     |    |     |     |   |
|-----------|-----|-----|-----|-----|-----|-----|----|-----|-----|---|
| A,B Waist | 29½ | 30½ | 31½ | 32½ | 34½ | 35½ | 37 | 38½ | 40½ | " |
|-----------|-----|-----|-----|-----|-----|-----|----|-----|-----|---|

|       |    |    |    |    |    |    |     |    |    |   |
|-------|----|----|----|----|----|----|-----|----|----|---|
| A Hip | 31 | 32 | 33 | 34 | 36 | 37 | 38½ | 40 | 42 | " |
|-------|----|----|----|----|----|----|-----|----|----|---|

|                   |  |  |  |  |  |  |  |  |  |  |
|-------------------|--|--|--|--|--|--|--|--|--|--|
| Width, lower edge |  |  |  |  |  |  |  |  |  |  |
|-------------------|--|--|--|--|--|--|--|--|--|--|

|          |    |    |    |    |    |    |     |    |    |      |
|----------|----|----|----|----|----|----|-----|----|----|------|
| Jacket A | 32 | 33 | 34 | 35 | 37 | 38 | 39½ | 41 | 43 | Ins. |
|----------|----|----|----|----|----|----|-----|----|----|------|

|          |     |     |     |     |     |     |    |     |     |   |
|----------|-----|-----|-----|-----|-----|-----|----|-----|-----|---|
| Jacket B | 30½ | 31½ | 32½ | 33½ | 35½ | 36½ | 38 | 39½ | 41½ | " |
|----------|-----|-----|-----|-----|-----|-----|----|-----|-----|---|

## Finished back length from base of neck

|          |    |     |    |     |    |     |    |     |     |      |
|----------|----|-----|----|-----|----|-----|----|-----|-----|------|
| Jacket A | 19 | 19½ | 20 | 20½ | 22 | 22½ | 23 | 23½ | 24½ | Ins. |
|----------|----|-----|----|-----|----|-----|----|-----|-----|------|

|          |    |     |    |     |    |     |    |     |     |   |
|----------|----|-----|----|-----|----|-----|----|-----|-----|---|
| Jacket B | 13 | 13½ | 14 | 14½ | 15 | 15½ | 16 | 16½ | 17½ | " |
|----------|----|-----|----|-----|----|-----|----|-----|-----|---|

\*with nap \*\*without nap

Moins Facile

## VESTE EN DEUX LONGUEURS POUR ENFANTS ET FILLETES

**Tissus Conseillés:** Velours côtelé, Cotonnades, Garbardine, Denim léger, Lin mélangé, Tissus tissés extensibles, Tweed, Twill, Lainages. **Doublure:** Cotonnades, Mélanges de polyester. **Entoilage:** Thermocollant léger.

**Mercerie:** A: 3 boutons de 2cm. B: 2 boutons de 2cm.

| Tailles | 3 | 4 | 5 | 6 | 7 | 8 | 10 | 12 | 14 |
|---------|---|---|---|---|---|---|----|----|----|
|---------|---|---|---|---|---|---|----|----|----|

## MESURES DU CORPS: Choisissez la taille du patron basée sur les mesures du corps

|          |    |    |    |    |    |    |    |    |    |    |
|----------|----|----|----|----|----|----|----|----|----|----|
| Poitrine | 56 | 58 | 61 | 64 | 66 | 69 | 73 | 76 | 81 | cm |
|----------|----|----|----|----|----|----|----|----|----|----|

|        |    |    |    |    |    |    |    |    |    |   |
|--------|----|----|----|----|----|----|----|----|----|---|
| Taille | 52 | 53 | 55 | 56 | 58 | 60 | 62 | 65 | 67 | " |
|--------|----|----|----|----|----|----|----|----|----|---|

|         |   |    |    |    |    |    |    |    |    |   |
|---------|---|----|----|----|----|----|----|----|----|---|
| Hanches | — | 61 | 64 | 66 | 69 | 71 | 76 | 81 | 87 | " |
|---------|---|----|----|----|----|----|----|----|----|---|

|                        |    |    |      |    |      |    |      |      |    |   |
|------------------------|----|----|------|----|------|----|------|------|----|---|
| Dos du cou à la taille | 23 | 24 | 25.5 | 27 | 29.5 | 31 | 32.5 | 34.5 | 36 | " |
|------------------------|----|----|------|----|------|----|------|------|----|---|

|                |    |     |     |     |     |     |     |     |     |   |
|----------------|----|-----|-----|-----|-----|-----|-----|-----|-----|---|
| Taille approx. | 97 | 104 | 112 | 119 | 127 | 132 | 142 | 149 | 155 | " |
|----------------|----|-----|-----|-----|-----|-----|-----|-----|-----|---|

|         |        |     |     |     |     |     |     |     |     |     |   |
|---------|--------|-----|-----|-----|-----|-----|-----|-----|-----|-----|---|
| Veste A | 115cm* | 1.3 | 1.3 | 1.4 | 1.4 | 1.6 | 1.6 | 1.7 | 1.9 | 1.9 | m |
|---------|--------|-----|-----|-----|-----|-----|-----|-----|-----|-----|---|

|  |        |     |     |     |     |     |     |     |     |     |   |
|--|--------|-----|-----|-----|-----|-----|-----|-----|-----|-----|---|
|  | 150cm* | 1.0 | 1.1 | 1.1 | 1.1 | 1.4 | 1.5 | 1.5 | 1.5 | 1.6 | " |
|--|--------|-----|-----|-----|-----|-----|-----|-----|-----|-----|---|

|            |         |     |     |     |     |     |     |     |     |     |   |
|------------|---------|-----|-----|-----|-----|-----|-----|-----|-----|-----|---|
| Doublure A | 115cm** | 0.9 | 1.0 | 1.0 | 1.0 | 1.3 | 1.3 | 1.4 | 1.4 | 1.5 | " |
|------------|---------|-----|-----|-----|-----|-----|-----|-----|-----|-----|---|

|             |      |     |     |     |     |     |     |     |     |     |   |
|-------------|------|-----|-----|-----|-----|-----|-----|-----|-----|-----|---|
| Entoilage A | 51cm | 0.8 | 0.8 | 0.8 | 0.8 | 1.0 | 1.0 | 1.0 | 1.0 | 1.0 | " |
|-------------|------|-----|-----|-----|-----|-----|-----|-----|-----|-----|---|

|         |        |     |     |     |     |     |     |     |     |     |   |
|---------|--------|-----|-----|-----|-----|-----|-----|-----|-----|-----|---|
| Veste B | 115cm* | 1.1 | 1.1 | 1.1 | 1.3 | 1.4 | 1.4 | 1.5 | 1.5 | 1.6 | m |
|---------|--------|-----|-----|-----|-----|-----|-----|-----|-----|-----|---|

|  |        |     |     |     |     |     |     |     |     |     |   |
|--|--------|-----|-----|-----|-----|-----|-----|-----|-----|-----|---|
|  | 150cm* | 0.9 | 0.9 | 0.9 | 1.0 | 1.1 | 1.1 | 1.1 | 1.3 | 1.3 | " |
|--|--------|-----|-----|-----|-----|-----|-----|-----|-----|-----|---|

|            |         |     |     |     |     |     |     |     |     |     |   |
|------------|---------|-----|-----|-----|-----|-----|-----|-----|-----|-----|---|
| Doublure B | 115cm** | 0.8 | 0.9 | 0.9 | 0.9 | 1.1 | 1.1 | 1.1 | 1.1 | 1.3 | " |
|------------|---------|-----|-----|-----|-----|-----|-----|-----|-----|-----|---|

|             |      |     |     |     |     |     |     |     |     |     |   |
|-------------|------|-----|-----|-----|-----|-----|-----|-----|-----|-----|---|
| Entoilage B | 51cm | 0.7 | 0.7 | 0.7 | 0.7 | 0.8 | 0.8 | 0.9 | 0.9 | 0.9 | " |
|-------------|------|-----|-----|-----|-----|-----|-----|-----|-----|-----|---|

## MESURES DES VÊTEMENTS FINI (Motif et aisance de port compris)

|              |    |    |    |    |    |    |    |    |    |    |
|--------------|----|----|----|----|----|----|----|----|----|----|
| A,B Poitrine | 72 | 75 | 77 | 80 | 83 | 85 | 89 | 93 | 98 | cm |
|--------------|----|----|----|----|----|----|----|----|----|----|

|            |    |    |    |    |    |    |    |    |     |   |
|------------|----|----|----|----|----|----|----|----|-----|---|
| A,B Taille | 75 | 77 | 80 | 83 | 88 | 90 | 94 | 98 | 103 | " |
|------------|----|----|----|----|----|----|----|----|-----|---|

|           |    |    |    |    |    |    |    |     |     |   |
|-----------|----|----|----|----|----|----|----|-----|-----|---|
| A Hanches | 79 | 81 | 84 | 86 | 91 | 94 | 98 | 102 | 107 | " |
|-----------|----|----|----|----|----|----|----|-----|-----|---|

|                    |  |  |  |  |  |  |  |  |  |  |
|--------------------|--|--|--|--|--|--|--|--|--|--|
| Largeur à l'ourlet |  |  |  |  |  |  |  |  |  |  |
|--------------------|--|--|--|--|--|--|--|--|--|--|

|         |    |    |    |    |    |    |     |     |     |    |
|---------|----|----|----|----|----|----|-----|-----|-----|----|
| Veste A | 81 | 84 | 86 | 89 | 94 | 97 | 100 | 104 | 109 | cm |
|---------|----|----|----|----|----|----|-----|-----|-----|----|

|         |    |    |    |    |    |    |    |     |     |   |
|---------|----|----|----|----|----|----|----|-----|-----|---|
| Veste B | 77 | 80 | 83 | 85 | 90 | 93 | 97 | 100 | 105 | " |
|---------|----|----|----|----|----|----|----|-----|-----|---|

## Longueur finie – dos, votre nuque à l'ourlet

|         |    |    |    |    |    |    |    |    |    |    |
|---------|----|----|----|----|----|----|----|----|----|----|
| Veste A | 48 | 50 | 51 | 52 | 56 | 57 | 58 | 60 | 62 | cm |
|---------|----|----|----|----|----|----|----|----|----|----|

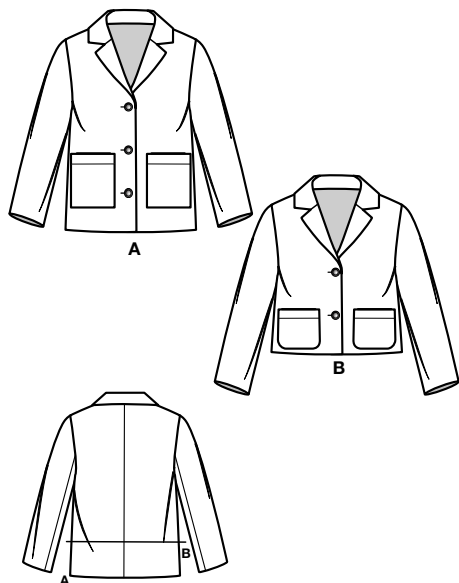
|         |    |    |    |    |    |    |    |    |    |   |
|---------|----|----|----|----|----|----|----|----|----|---|
| Veste B | 33 | 34 | 36 | 37 | 38 | 39 | 41 | 42 | 44 | " |
|---------|----|----|----|----|----|----|----|----|----|---|

\*avec sens \*\*sans sens

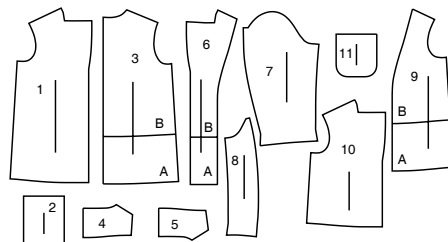


# Simplicity®

Thank you for purchasing this Simplicity pattern.  
We made every effort to provide you with a high quality product.



11 PIECES



- 1 Front-A
- 2 Pocket-A
- 3 Back-A,B
- 4 Upper Collar-A,B
- 5 Under Collar-A,B
- 6 Front Facing-A,B
- 7 Upper Sleeve-A,B
- 8 Under sleeve-A,B
- 9 Front Lining-A,B
- 10 Front-B
- 11 Pocket-B



www.simplicity.com

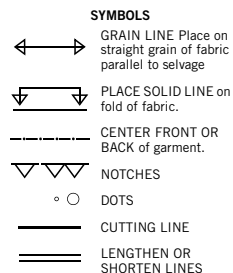


info@simplicity.com



1-888-588-2700

## The Pattern



SEAM ALLOWANCE: 5/8" (1.5cm) unless otherwise stated is included but not printed on MULTI-SIZE PATTERNS. Mark your size with colored felt tip pen. See chart on tissue for how to use MULTI-SIZE PATTERNS.

**ADJUST IF NEEDED**  
Make adjustments before placing pattern on fabric.

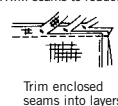
**TO LENGTHEN:**  
Cut pattern between lengthen or shorten lines. Spread pattern evenly, the amount needed and tape to paper.

**TO SHORTEN:**  
At lengthen or shorten lines, make an even pleat taking up amount needed. Tape in place.

When lengthen or shorten lines are not given, make adjustments at lower edge of pattern.

## Sewing

- SEW garment following **Sewing Directions**.
- PIN or machine-baste seams matching notches.
- STITCH 5/8" (1.5 cm) seams unless otherwise stated.
- PRESS seams open unless otherwise indicated clipping when necessary so seams will lie flat.
- TRIM seams to reduce bulk, as shown below.



Trim enclosed seams into layers



Trim corners



Clip inner curves



Notch outer curves

## General Directions

## Cutting/Marking

**BEFORE CUTTING:**  
PRESS pattern pieces with a warm dry iron. PRE-SHRINK fabric by pre-washing washables or steam-pressing non-washables.

CIRCLE your cutting layout.

PIN pattern to fabric as shown in Cutting Layouts.

• FOR DOUBLE THICKNESS: Fold fabric with RIGHT sides together.

• FOR SINGLE THICKNESS: Place fabric RIGHT side up.

• FOR PILE, SHADED OR ONE WAY DESIGN FABRICS: Use "with nap" layouts

**AFTER CUTTING:**  
Transfer markings to WRONG side of fabric before removing pattern. Use pin and chalk method or dressmaker's tracing paper and wheel.

## To Quick Mark:

- Snip edge of fabric to mark notches, ends of fold lines and center lines.

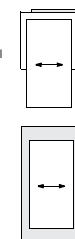
- Pin mark dots.



## SPECIAL CUTTING NOTES

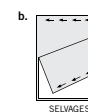
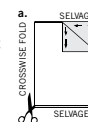
★ If layout shows a piece extending past fold, cut out all pieces except piece that extends.

Open out fabric to single thickness. Cut extending piece on RIGHT side of fabric in position shown.

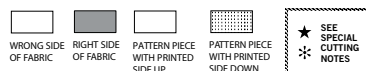


✱ Mark small arrows along both selvages indicating direction of nap or design. Fold fabric crosswise with RIGHT sides together, and cut along fold (a).

Turn one fabric layer around so arrows on both layers go in the same direction. Place RIGHT sides together (b).



## Cutting Layouts



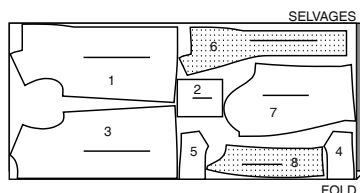
POSITION OF PATTERN PIECES MAY VARY SLIGHTLY ACCORDING TO YOUR PATTERN SIZE

## CHILDREN

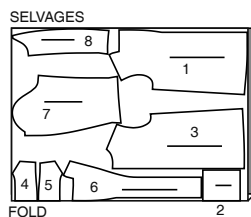
## JACKET A

USE PIECES 1 2 3 4 5 6 7 8

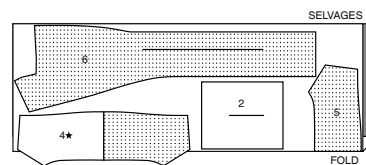
45" (115CM)  
WITH NAP  
SIZES 3 4 5 6



60" (150CM)  
WITH NAP  
SIZES 3 4 5 6

INTERFACING A  
USE PIECES 2 4 5 6

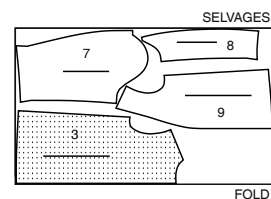
20" (51CM)  
SIZES 3 4 5 6



## LINING A

USE PIECES 3 7 8 9

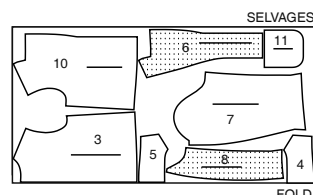
45" (115CM)  
WITHOUT NAP  
SIZES 3 4 5 6



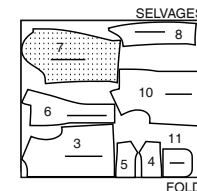
## JACKET B

PIECES 3 4 5 6 7 8 10 11

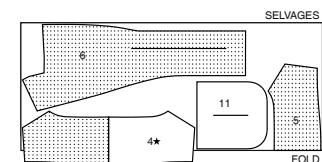
45" (115CM)  
WITH NAP  
SIZES 3 4 5 6



60" (150CM)  
WITH NAP  
SIZES 3 4 5 6

INTERFACING B  
USE PIECES 4 5 6 11

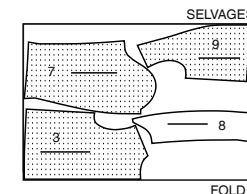
20" (51CM)  
SIZES 3 4 5 6



## LINING B

USE PIECES 3 7 8 9

45" (115CM)  
WITHOUT NAP  
SIZES 3 4 5 6



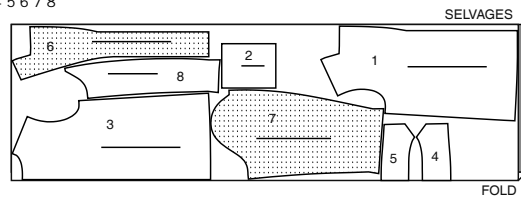
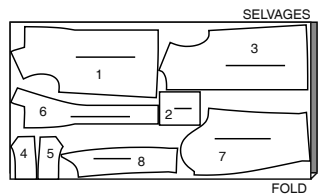
CUTTING LAYOUTS CONTINUED ON PAGE 2

**S9831**

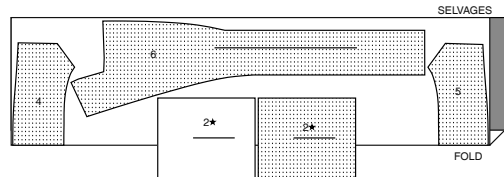
2 of 4

**GIRL'S****JACKET A**

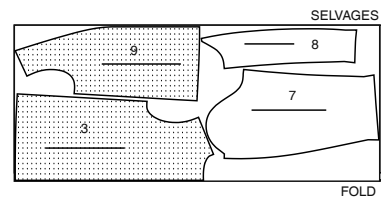
USE PIECES 1 2 3 4 5 6 7 8

45" (115CM)  
WITH NAP  
SIZES 7 8 10 12 1460" (150CM)  
WITH NAP  
SIZES 7 8 10 12 14**INTERFACING A**

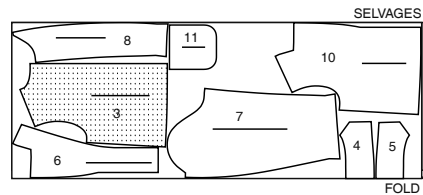
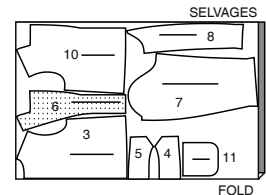
USE PIECES 2 4 5 6

20" (51CM)  
SIZES 7 8 10 12 14**LINING A**

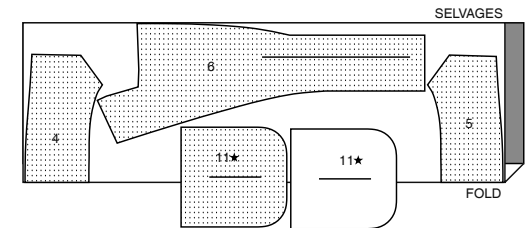
USE PIECES 3 7 8 9

45" (115CM)  
WITHOUT NAP  
SIZES 7 8 10 12 14**JACKET B**

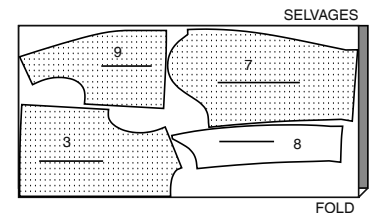
USE PIECES 3 4 5 6 7 8 10 11

45" (115CM)  
WITH NAP  
SIZES 7 8 10 12 1460" (150CM)  
WITH NAP  
SIZES 7 8 10 12 14**INTERFACING B**

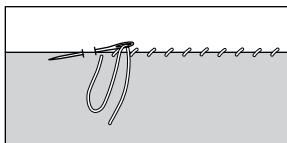
USE PIECES 4 5 6 11

20" (51CM)  
SIZES 7 8 10 12 14**LINING B**

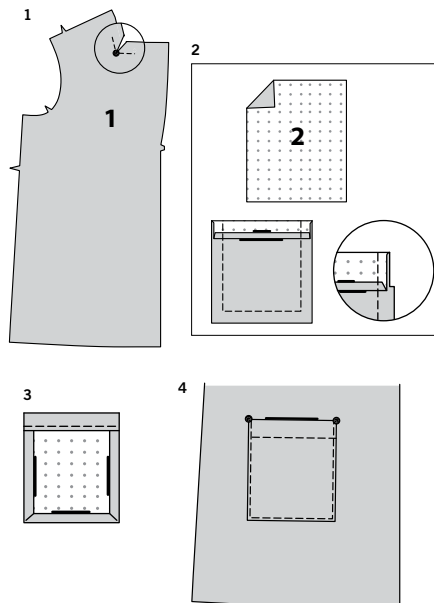
USE PIECES 3 7 8 9

45" (115CM)  
WITHOUT NAP  
SIZES 7 8 10 12 14**Sewing Directions****FABRIC KEY**Read **General Directions** on page 1 before you begin.Sewing methods in **BOLD TYPE** have Sewing Tutorial Video available. Scan QR CODE to watch videos:**EASE/GATHER** - see Gathering: "sewing two row gathers" video.**REINFORCE** - see Machine Stitches: "how to reinforce" video.**STAYSTITCH** - see Machine Stitches: "how to do stay-stitching" video.**CATCHSTITCH** - see "how to catchstitch" video.**SLIPSTITCH** - Slide needle through a folded edge, then pick up a thread of underneath fabric.

## SEWING TUTORIALS

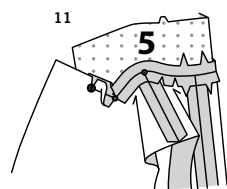
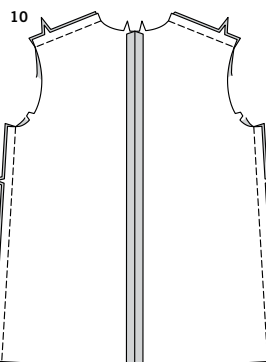
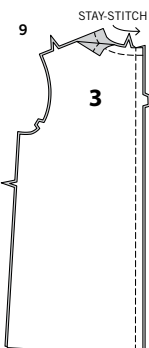
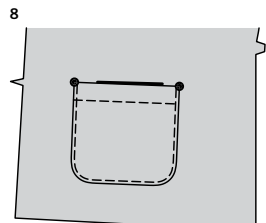
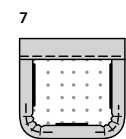
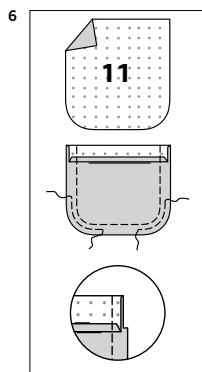
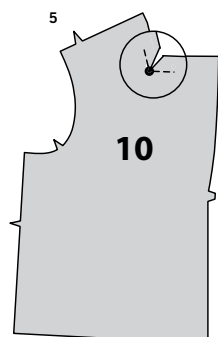
Build your skills viewing short, easy-to-follow videos at [simplicity.com/sewingtutorials](http://simplicity.com/sewingtutorials)

SLIPSTITCH

**JACKET A, B****FRONT AND BACK****FOR VIEW A**

1. To reinforce small dot at inner corner of front (1), stitch along seam line for about 1" (2.5cm) on each side of small dot, as shown, stitching through small dot. Clip front to small dot at inner corner, being careful not to clip through stitching.
2. Apply **INTERFACING** to pocket (2). Press under 1/4" (6mm) on upper edge of pocket. Turn upper edge to **OUTSIDE** along fold line, forming facing. Stitch along seam line on raw edges. Trim seam allowance in the facing area to 1/4" (6mm).
3. Turn corners **RIGHT** side out, turning facing to the **WRONG** side; press, pressing under raw edges along stitching, diagonally folding corners. Stitch facing close to inner pressed edge.
4. On **OUTSIDE**, pin pocket to front, matching large dots. Stitch close to side and lower edges.

## FOR VIEW B



**5.** To reinforce small dot at inner corner of front (10), stitch along seam line for about 1" (2.5cm) on each side of small dot, as shown, stitching through small dot. Clip front to small dot at inner corner, being careful not to clip through stitching.

**6.** Apply **INTERFACING** to pocket (11). Press under 1/4" (6mm) on upper edge of pocket. Turn upper edge to **OUTSIDE** along fold line, forming facing. Stitch along seam line on raw edges. To ease curved edge of pocket, stitch 1/4" (6mm) **INSIDE** the seam line, using a long machine stitch. Trim seam allowance in the facing area to 1/4" (6mm).

**7.** Turn corners **RIGHT** side out, turning facing to the **WRONG** side; press, pressing under raw edges along stitching. Pull up ease stitches to shape the curve. To eliminate bulk, notch out fullness in the seam allowance along the curve as far as ease stitches. Stitch facing close to inner pressed edge.

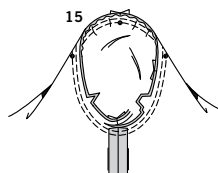
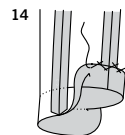
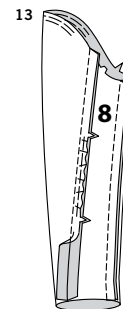
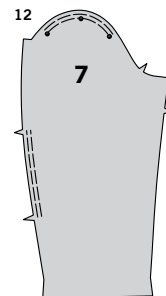
**8.** On **OUTSIDE**, pin pocket to front, matching large dots. Stitch close to side and lower edges.

## CONTINUE AS FOLLOWS FOR VIEWS A, B

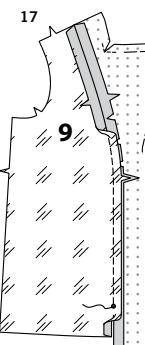
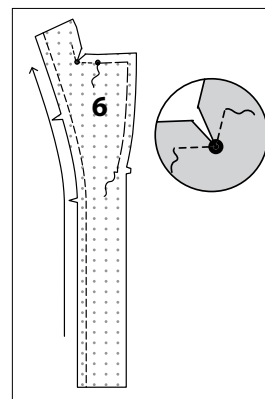
**9.** **STAYSTITCH** back (3) neck edge. With **RIGHT** sides together, pin back sections together at center back seam, matching notches. Stitch.

**10.** Stitch front sections to back at shoulder and side seams.

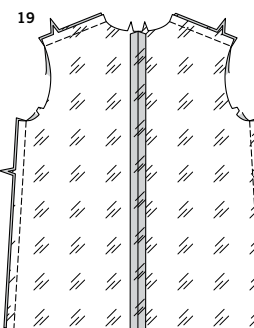
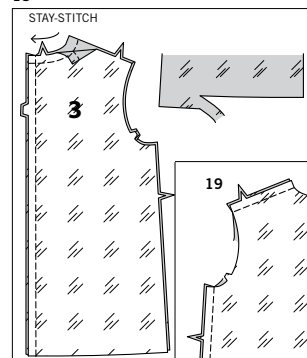
**11.** Apply **INTERFACING** to under collar (5). Pin under collar to neck edge, matching centers and notches, placing inner small dots at shoulder seams, matching remaining symbols. Baste, clipping back neck edge of jacket to stay-stitching along curves. Stitch between large dots. Clip to large dots. Trim seam. Press seam open.



16



18



## SLEEVE

**12.** **EASESTITCH** upper edge of upper sleeve (7) between outer small dots. **EASESTITCH** back edge of upper sleeve between notches.

**13.** With **RIGHT** sides together, pin under sleeve (8) to upper sleeve at back edge, matching notches. Pull up ease stitches on back edge to fit. Stitch. Stitch remaining seam of sleeve, matching notches.

**14.** Turn up a 1 1/2" (3.8cm) hem on lower edge of sleeve. **CATCHSTITCH** hem in place. Press.

**15.** With **RIGHT** sides together, pin sleeve to armhole edge with center small dot at shoulder seam, matching underarm seams, notches and remaining small dots. Pull up ease stitches on upper edge to fit; baste. Stitch. Stitch again 1/4" (6mm) from first stitching. Trim seam below notches close to stitching. Press only seam allowance, shrinking out fullness.

## FINISHING

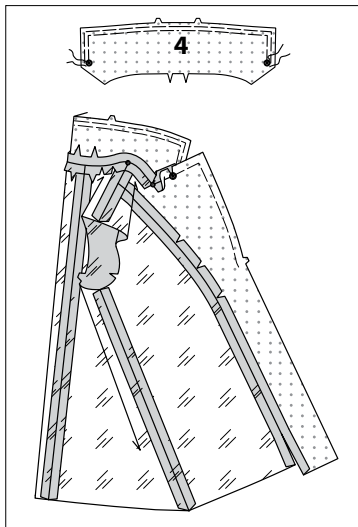
**16.** To reinforce small dot at inner corner of front facing (6), stitch along seam line for about 1" (2.5cm) on each side of small dot, as shown, stitching through small dot. Clip front to small dot at inner corner, being careful not to clip through stitching. **STAYSTITCH** side edge of front facing. **EASESTITCH** front and upper edges of front facing between notches and large dot, as shown.

**17.** Pin front facing to front edge of front lining (9), matching notches, clipping side edge of front facing to stay-stitching along curves. Baste. Stitch, leaving open below small dot. Press seam open, pressing under remainder of seam allowances below small dots.

**18.** Trim 1" (2.5cm) from lower edge of back lining (3). **STAYSTITCH** back lining neck edge. With **RIGHT** sides together, pin back lining sections together at center back seam, matching notches. Stitch.

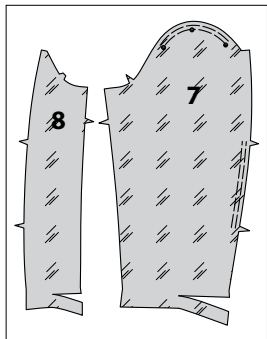
**19.** Stitch front lining sections to back lining at shoulder and side seams.

20

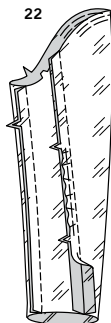


**20.** Apply **INTERFACING** to upper collar (4). **EASESTITCH** lower and side edges of upper collar between lower notches and large dots, as shown. Pin upper collar to neck edge, matching centers and notches, placing inner small dots at shoulder seams, matching remaining symbols. Baste, clipping back neck edge of jacket lining to stay-stitching along curves. Stitch between large dots. Clip to large dots. Trim seam. Press seam open.

21



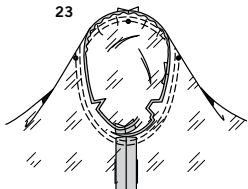
22



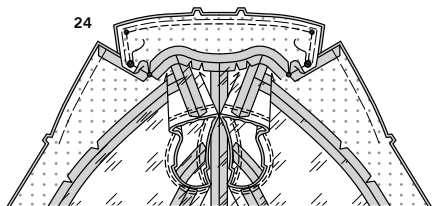
**21.** Trim 1" (2.5cm) from lower edge of upper sleeve lining (7) and under sleeve lining (8). **EASESTITCH** upper edge of upper sleeve lining between outer small dots. **EASESTITCH** back edge of upper sleeve lining between notches.

**22.** With **RIGHT** sides together, pin under sleeve lining to upper sleeve lining at back edge, matching notches. Pull up ease stitches on back edge to fit. Stitch. Stitch remaining seam of sleeve, matching notches.

23

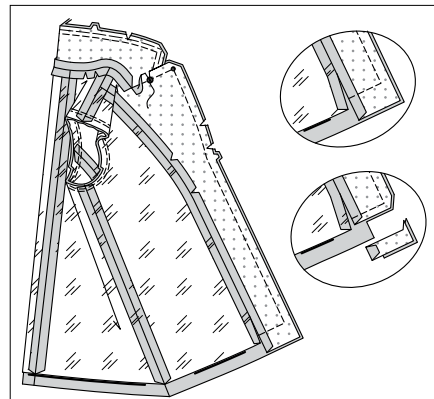


24



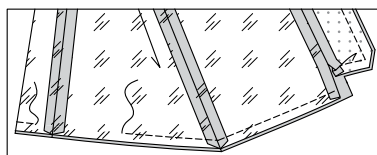
**24.** With **RIGHT** sides together, pin facing and lining to jacket, matching centers, symbols and notches. Pull up ease stitches on front facing and upper collar to fit; baste. Stitch collar edges between large dots.

25



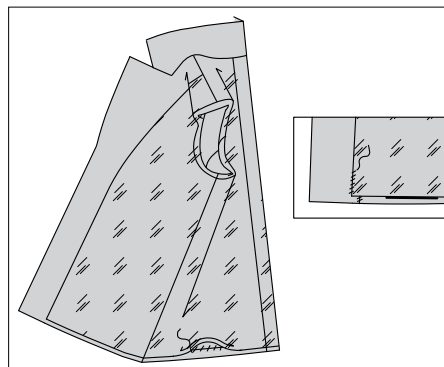
**25.** Stitch front edges, breaking stitching at large dots. Trim seams and corners; clip curves. Stitch across facings 1 1/4" (3.8cm) above lower edge. Trim lower edge of facing close to stitching.

26



**26.** Pin lower edges of coat and lining together, matching centers and seams. Stitch lower edges between turned edges of front lining in a 1/2" (1.3cm) seam, leaving an opening on lower edge of back to turn jacket, keeping front facing and front out of the way. (A fold will form in the jacket that will disappear when the coat is turned.)

27



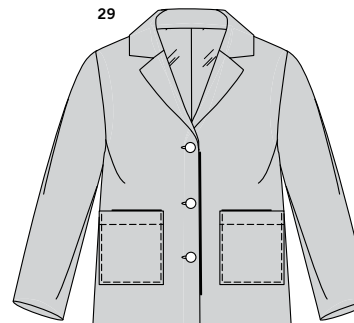
**27.** Turn jacket and lining **RIGHT** side out through opening in lower edge. Press, pressing up jacket hem. Slip sleeves in place. Slip hand through opening in lower edge of jacket. Tack neck, armhole and underarm seams of coat and lining together loosely. Tack hem to seams. Press under 1/2" (1.3cm) on remaining lower edge of lining. Slip-stitch pressed edge of lining 1" (2.5cm) above lower edge of jacket. Allow jacket lining to drop. Press folded edge in place. Slip-stitch front facing to hem and remaining front edges of lining to facing.

28



**28.** Press under 1/2" (1.3cm) on lower edge of sleeve lining. Slip-stitch pressed edge of sleeve lining 1" (2.5cm) above lower edge of sleeve. Allow lining to drop. Press the folded edge in place.

29



**29.** Make buttonholes in right front at markings. Lap opening edges, matching centers. Make button markings in left front. Sew buttons at markings.





# Congrats!

You've completed your sewing adventure

---

## SHARE YOUR LOOK



Post your pattern and tag us  
**@simplicity\_creative\_group** and **#simplicitypatterns**  
for a chance to be featured on our social media.

Look for more PDF patterns at **simplicity.com**

Have a question or need help with your sewing project call us at  
1-888-588-2700



Simplicity ©2023 a division of IG Design Group Americas Inc. • Atlanta, GA 30342 USA [www.thedesigngroup.com](http://www.thedesigngroup.com) • All Rights Reserved. [www.simplicity.com](http://www.simplicity.com) • Made in the U.S.A. Fabriqué aux États-Unis.

To be used for individual private home use only and not for commercial or manufacturing purposes. • A usage privé seulement et non à des fins commerciales ou de production en série. • Para uso privado solamente, no se puede utilizar con propósitos de comercialización o de producción en serie.