

S9830

Simplicity®

easy-to-sew



A



B



C



CHILDREN'S DRESSES

Suggested Fabrics: Chambray, Cotton Blends, Gingham, Linen Blends, Poplin, Seersucker. **Interfacing:** Lightweight Fusible.

Notions: A,B: Four ¾" (1.5cm) buttons. **Also for A:** ¾ yd. (0.7m) of ¾" (1cm) elastic. **C:** Three ¾" (1.5cm) buttons, one pkg. of ½" (1.3cm) single fold bias tape.

Sizes	3	4	5	6	7	8	
BODY MEASUREMENTS: Select pattern size based on body measurements							
Chest	22	23	24	25	26	27	Ins.
Waist	20½	21	21½	22	23	23½	"
Hip	—	24	25	26	27	28	"
Back-neck to waist	9	9½	10	10½	11½	12	"
Approx. Height	38	41	44	47	50	52	"
Dress A	45**	2%	2½	2%	2¾	2%	3 Yds.
	60**	1%	2	2	2%	2½	"
Interfacing 20" - ¾ yd.							
Dress B	45**	2¼	2%	2½	2%	3	Yds.
	60**	1¾	1¾	1¾	1%	2	2%
Interfacing 20" - ¾ yd.							
Dress C	45/60**						
		1%	1½	1%	1¾	1%	1%
Contrast C (Bib Front, Bib Back, Ruffle, Collar)							
	45/60**						
		%	%	%	%	¾	¾
Interfacing 20" - ¾ yd.							
FINISHED GARMENT MEASUREMENTS (Includes Design and Wearing Ease)							
A,B,C Chest	26	27	28	29	30	31	Ins.
Width, lower edge							
Dress A,B,C	54½	55½	56½	57½	58½	59½	Ins.
Finished back length from base of neck							
Dress A,B,C	20	22	24	26	28	30	Ins.

*with nap **without nap

Easy

Facile

ROBES POUR ENFANTS

Tissus Conseillés: Chambray, Cotonnades, Vichy, Toiles de lin mélangés, Popeline, Seersucker. **Entoilage:** Thermocollant léger.

Mercerie: A,B: 4 boutons de 1.5cm. **Aussi pour A:** ____m d'élastique de 1cm. **C:** 3 boutons de 1.5cm, 1 paquet de ruban de biais simple de 1.3cm.

Tailles	3	4	5	6	7	8	
MESURES DU CORPS: Choisissez la taille du patron basée sur les mesures du corps							
Poitrine	56	58	61	64	66	69	cm
Taille	52	53	55	56	58	60	"
Hanches	—	61	64	66	69	71	"
Dos du cou à la taille	23	24	25.5	27	29.5	31	"
Taille approx.	97	104	112	119	127	132	"
Robe A	115cm*	2.2	2.3	2.4	2.5	2.6	2.7 m
	150cm*	1.7	1.8	1.8	1.8	1.9	2.1 "
Entoilage 51cm - 0.3m							
Robe B	115cm*	2.1	2.2	2.2	2.4	2.5	2.7 m
	150cm*	1.6	1.6	1.6	1.7	1.8	1.9 "
Entoilage 51cm - 0.6m							
Robe C	115/150cm*						
		1.3	1.4	1.5	1.6	1.6	1.7 m
Contraste C (Bavette devant, Bavette dos, Volant, Col)							
	115/150cm*						
		0.6	0.6	0.6	0.6	0.6	0.7 m
Entoilage 51cm - 0.3m							
MESURES DES VÊTEMENTS FINI (Motif et aisance de port compris)							
A,B,C Poitrine	66	69	71	74	76	79	cm
Largeur à l'ourlet							
Robe A,B,C	138	141	144	146	149	151	cm
Longueur finie – dos, votre nuque à l'ourlet							
Robe A,B,C	51	56	61	66	71	76	cm

*avec sens **sans sens



A

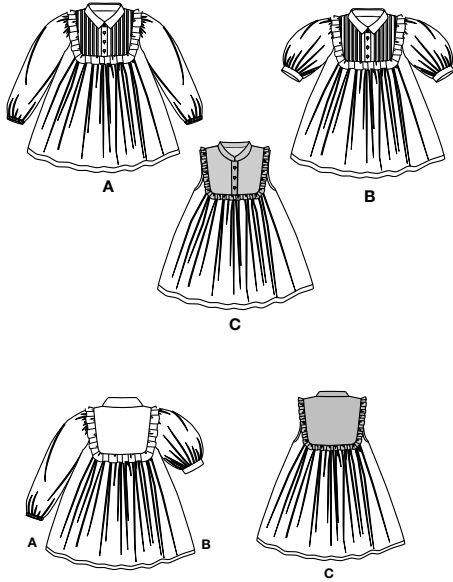
B



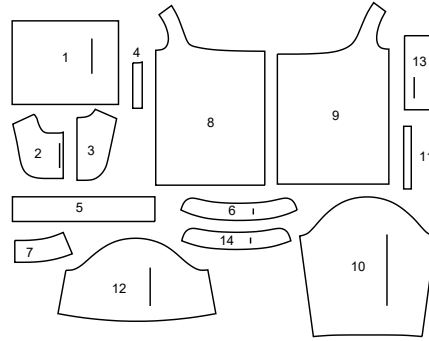
C

Simplicity®

Thank you for purchasing this Simplicity pattern.
We made every effort to provide you with a high quality product.



14 PIECES



- 1 Block for Tucks-A,B
2 Bib Front- C Guide for A,B
3 Bib Back- A,B,C
4 Front Interfacing-A,B,C
5 Ruffle-A,B,C
6 Collar Band-A,B
7 Collar-A,B
8 Front-A,B,C
9 Back-A,B,C
10 Sleeve-A
11 Elastic Guide for Sleeve-A
12 Sleeve-B
13 Sleeve Band-B
14 Collar-C



www.simplicity.com



info@simplicity.com



1-888-588-2700

The Pattern

- SYMBOLS**
- ↔ GRAIN LINE Place on straight grain of fabric parallel to selvage
 - ↓ PLACE SOLID LINE on fold of fabric.
 - CENTER FRONT OR BACK of garment.
 - ▽ NOTCHES
 - DOTS
 - CUTTING LINE
 - == LENGTHEN OR SHORTEN LINES

SEAM ALLOWANCE: 5/8" (1.5cm) unless otherwise stated is included but not printed on MULTI-SIZE PATTERNS. Mark your size with colored felt tip pen. See chart on tissue for how to use MULTI-SIZE PATTERNS.

ADJUST IF NEEDED
Make adjustments before placing pattern on fabric.

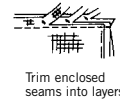
TO LENGTHEN:
Cut pattern between lengthen or shorten lines. Spread pattern evenly, the amount needed and tape to paper.

TO SHORTEN:
At lengthen or shorten lines, make an even pleat taking up amount needed. Tape in place.

When lengthen or shorten lines are not given, make adjustments at lower edge of pattern.

Sewing

- SEW garment following **Sewing Directions**.
- PIN or machine-baste seams matching notches.
- STITCH 5/8" (1.5 cm) seams unless otherwise stated.
- PRESS seams open unless otherwise indicated clipping when necessary so seams will lie flat.
- TRIM seams to reduce bulk, as shown below.



Trim enclosed seams into layers



Trim corners



Clip inner curves



Notch outer curves

General Directions

Cutting/Marking

BEFORE CUTTING:

PRESS pattern pieces with a warm dry iron. PRE-SHRINK fabric by pre-washing washables or steam-pressing non-washables.

CIRCLE your cutting layout.

PIN pattern to fabric as shown in Cutting Layouts.

• FOR DOUBLE THICKNESS: Fold fabric with RIGHT sides together.

• FOR SINGLE THICKNESS: Place fabric RIGHT side up.

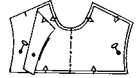
• FOR PILE, SHADED OR ONE WAY DESIGN FABRICS: Use "with nap" layouts

AFTER CUTTING:

Transfer markings to WRONG side of fabric before removing pattern. Use pin and chalk method or dressmaker's tracing paper and wheel.

To Quick Mark:

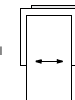
- Snip edge of fabric to mark notches, ends of fold lines and center lines.
- Pin mark dots.



SPECIAL CUTTING NOTES

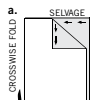
★ If layout shows a piece extending past fold, cut out all pieces except piece that extends.

Open out fabric to single thickness. Cut extending piece on RIGHT side of fabric in position shown.

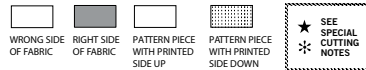


✱ Mark small arrows along both selvages indicating direction of nap or design. Fold fabric crosswise with RIGHT sides together, and cut along fold (a).

Turn one fabric layer around so arrows on both layers go in the same direction. Place RIGHT sides together (b).



Cutting Layouts



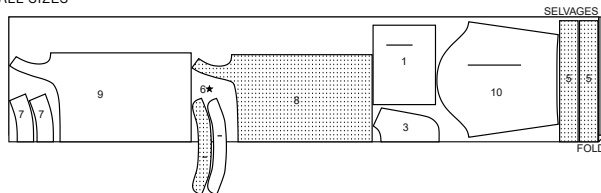
POSITION OF PATTERN PIECES MAY VARY SLIGHTLY ACCORDING TO YOUR PATTERN SIZE

DRESS A

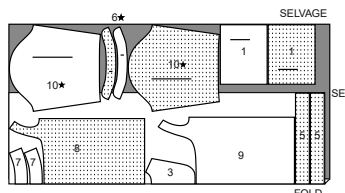
USE PIECES 1 3 5 6 7 8 9 10

PIECE 2 WILL BE CUT FROM PREPARED FABRIC. SEE SEWING INSTRUCTIONS.

45" (115CM) WITH NAP
ALL SIZES



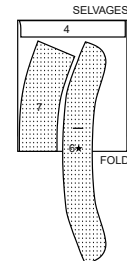
60" (150CM)
WITH NAP
ALL SIZES



INTERFACING A

USE PIECES 4 6 7

20" (51CM)
ALL SIZES

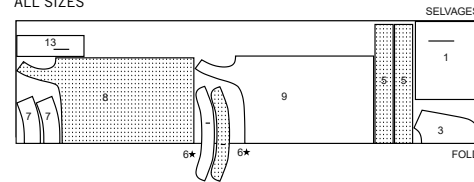


DRESS B

USE PIECES 1 3 5 6 7 8 9 12 13

PIECE 2 WILL BE CUT FROM PREPARED FABRIC. SEE SEWING INSTRUCTIONS.

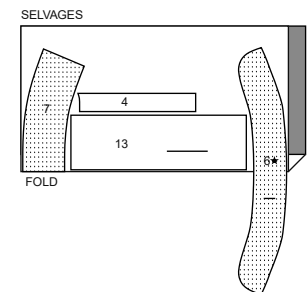
45" (115CM) WITH NAP
ALL SIZES



INTERFACING B

USE PIECES 4 6 7 13

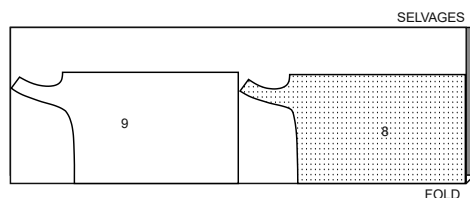
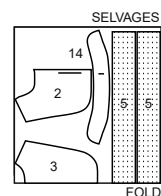
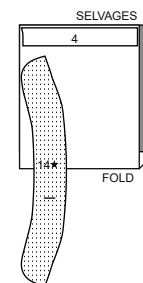
20" (51CM)
ALL SIZES



CUTTING LAYOUTS CONTINUED ON PAGE 2

S9830

2 of 4

DRESS C
USE PIECES 8 945" TO 60" (115CM TO 150CM)
WITH NAP
ALL SIZES**CONTRAST: BIB FRONT AND BACK, RUFFLE, BAND**
USE PIECES 2 3 5 1445" TO 60" (115CM TO 150CM)
WITH NAP
ALL SIZES**INTERFACING C**
USE PIECES 4 1420" (51CM)
ALL SIZES

SEWING TUTORIALS

Build your skills viewing short, easy-to-follow videos at
[simplicity.com/sewingtutorials](https://www.simplicity.com/sewingtutorials)**Sewing Directions**

FABRIC KEY

RIGHT SIDE	WRONG SIDE	INTERFACING	LINING	LINING
------------	------------	-------------	--------	--------

Read **General Directions** on page 1 before you begin.**GLOSSARY OF SEWING METHODS**Sewing methods shown in **BOLD** are defined below:**EASE/GATHER**- Loosen needle tension slightly. With **RIGHT** side up, stitch 5/8" (1.5cm) from cut edge using a long stitch. Stitch again 1/4" (6mm) from the first stitching within the seam allowance.**INTERFACING**- Pin interfacing to **WRONG** side of fabric. Fuse interfacing in place following manufacturer's directions.**STAY-STITCH**- Stitch 1/2" (1.3cm) from cut edge in direction of arrows. This stitching stays in permanently to prevent stretching on curved edges. (Shown only in the first illustration.)**TOP-STITCH**- Stitch 1/4" (6mm) away from seam in direction of pressed seam, as indicated in sewing directions.**UNDERSTITCH**- Press bias tape or facing and seam away from garment, stitching through tape or facing and seam allowances close to seam.**DRESS A, B, C****FRONT AND BACK****FOR VIEWS A, B**

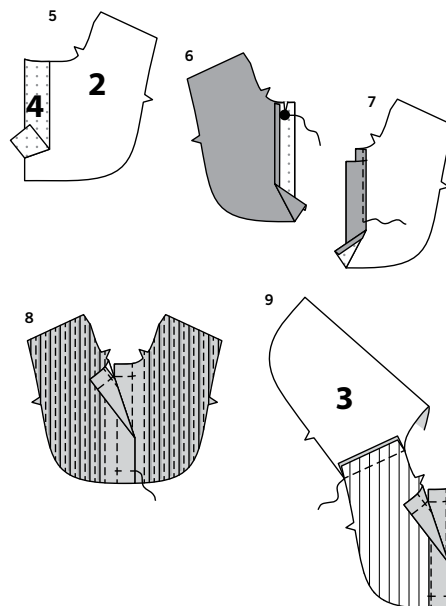
1. To make tucks in block for tucks (1), with **WRONG** sides together, fold tucks, one at a time, along foldline. Press. Stitch 1/4" (6mm) from fold. Press tucks away from center front.

NOTE: To preserve your pattern piece make a template of piece 2 from a scrap of tissue paper.

2. With **WRONG** sides together, pin prepared block for tucks fabric sections together, matching centers, tucks and raw edges. Baste raw edges. Pin bib front (2) template to fabric, matching centers and front raw edges. Baste. Cut out bib front sections. Transfer markings. Tear away template. Stitch close to neck, shoulder and lower edges. (For clarity purposes, this stitching will not be shown in following illustrations.)

3. Apply **INTERFACING** to front edge of bib front, having upper, front and lower edges even.

4. Press under 1/4" (6mm) on front self facing edge. Turn front edge to **INSIDE** along foldline. Press. Stitch close to inner pressed edge. Baste upper and lower raw edges.

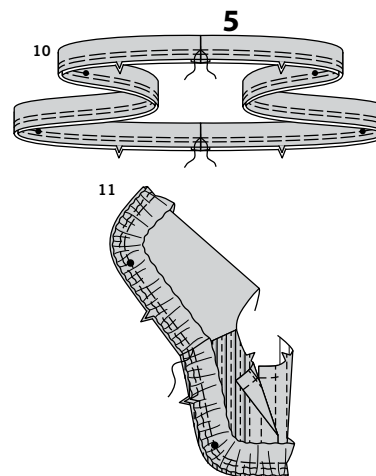
**FOR VIEW C**

5. Apply **INTERFACING** to front edge of bib front, having upper, front and lower edges even.
6. Press under 1/4" (6mm) on front self facing edge. Turn front edge to **OUTSIDE** along foldline. Stitch upper edge, ending stitching at large dot. Clip to large dot. Trim seam.
7. Turn self facing to **INSIDE**. Press. Stitch close to inner pressed edge. Baste upper and lower raw edges.

CONTINUE AS FOLLOWS FOR ALL VIEWS

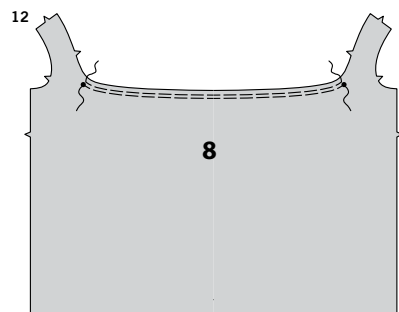
8. Lap **RIGHT** bib front over **LEFT**, matching centers. Baste across lower edges.

9. Stitch bib back (3) to bib front at shoulder seams.

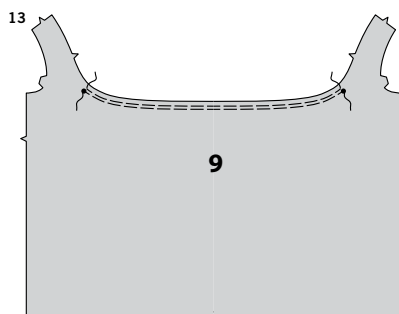


10. Stitch ruffle (5) sections together at ends, as shown. With **WRONG** sides together, fold ruffle in half lengthwise, matching notches and raw edges. Baste and **GATHER** raw edges.

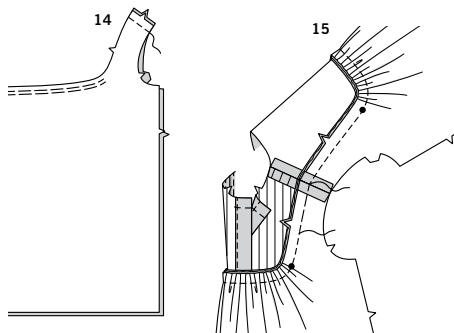
11. Pin ruffle to lower edge of bib, matching seams, centers and small dots, having raw edges even. Pull up gathering stitches and adjust gathers evenly. Baste.



12. GATHER upper edge of front (8) between small dots.

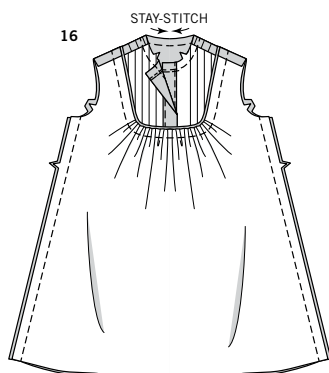


13. GATHER upper edge of back (9) between small dots.

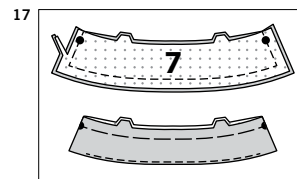


14. Stitch front to back at shoulder seams.

15. With RIGHT sides together, pin front and back to lower edge of bib, matching seams, centers and small dots, having raw edges even. Pull up gathering stitches and adjust gathers evenly. Baste. Stitch. Trim seam. Press seam toward bib.



16. Stitch front to back at side seams. **STAYSTITCH** neck edge.



COLLAR

FOR VIEWS A, B

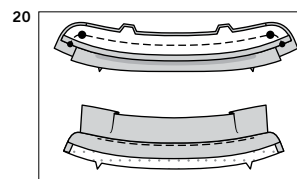
17. Apply **INTERFACING** to collar (7). With RIGHT sides together, pin collar sections together matching notches and large dots. Stitch outer edges of collar leaving edge with notches open. Trim seam. For facing, **UNDERSTITCH** uninterfaced collar section. Turn collar RIGHT side out. Press. Baste raw edges together.



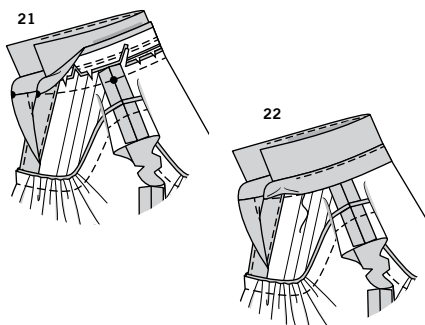
18. Apply **INTERFACING** to collar band (6). On OUTSIDE, pin collar, facing side down to interfaced collar band section, matching notches and large dots. Baste.



19. For facing, press under seam allowance on lower edge of uninterfaced collar band section, as shown. Trim pressed seam allowance to 3/8" (1 cm).



20. With RIGHT sides together, pin collar band facing to collar band, over collar, matching dots and notches. Stitch. Trim seam. **UNDERSTITCH** facing. Turn facing to INSIDE. Press.



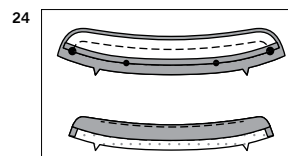
21. On OUTSIDE, pin collar to neck edge, matching centers, placing inner small dots at shoulder seams, matching remaining small dots, clipping neck edge where necessary. Stitch. Trim seam. Press seam toward collar.

22. **SLIPSTITCH** pressed edge over seam.

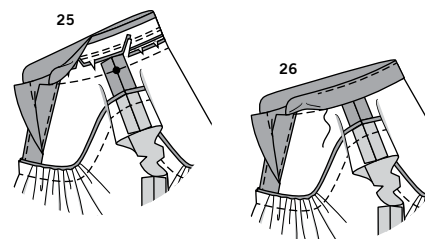


FOR VIEW C

23. Apply **INTERFACING** to collar (14). For facing, press under seam allowance on lower edge of uninterfaced collar band section, as shown. Trim pressed seam allowance to 3/8" (1 cm).



24. With RIGHT sides together, pin collar facing to collar, matching centers and large dots. Stitch. Trim seam. **UNDERSTITCH** facing. Turn facing to INSIDE. Press.



25. On OUTSIDE, pin collar to neck edge, matching centers, placing small dots at shoulder seams, matching large dots, clipping neck edge where necessary. Stitch. Trim seam. Press seam toward collar.

26. **SLIPSTITCH** pressed edge over seam.

S9830

4 of 4

SLEEVE, ARMHOLE AND FINISHING FOR VIEW A

27. GATHER upper edge of sleeve (10) between outer small dots.

28. Stitch sleeve seam.

29. Turn 3/4" (1.9cm) on lower edge of sleeve to INSIDE, forming casing; press. Press under 1/4" (6mm) on raw edge. Stitch close to inner edge of casing, leaving an opening to insert elastic.

30. Cut elastic the length of elastic guide for sleeve (11). Insert elastic through casing; adjust to fit. Stitch ends of elastic together securely.

31. Stitch opening closed. Distribute fullness evenly.

FOR VIEW B

32. GATHER upper edge of sleeve (12) between outer small dots. GATHER lower edge of sleeve between large dots.

33. Stitch sleeve seam.

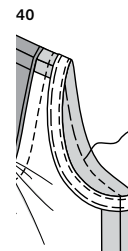
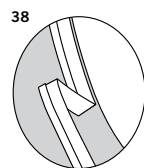
34. Apply INTERFACING to sleeve band (13). Stitch ends of sleeve band together. Press under seam allowance on lower unnotched edge of sleeve band, as shown. Trim pressed seam allowance to 3/8" (1 cm).

35. With RIGHT sides together, pin sleeve band to lower edge of sleeve, matching seams, notches and large dots, having raw edges even. Pull up gathering stitches and adjust gathers evenly. Baste. Stitch. Trim seam. Press seam toward sleeve band.

36. Turn sleeve band to INSIDE along foldline. Press. SLIPSTITCH pressed edge over seam.

FOR VIEWS A, B

37. With right sides together, pin sleeve armhole edge, matching notches, placing center small dot at shoulder seam, matching remaining small dots. Pull up gathering stitches and adjust gathers evenly. Stitch. Press seam toward sleeve.



FOR VIEW C

38. Trim away 1/4" (6mm) from front and back armhole edge. Open out one edge of single fold bias tape.

39. With RIGHT sides together, pin tape to armhole edge keeping ruffle free, having crease 3/8" (1cm) from raw edge, turning under and lapping one end at side seam. Stitch. Trim seam; clip curves. UNDERSTITCH.

40. Turn tape to INSIDE; press. Baste close to inner edge of tape. SLIPSTITCH ends. On OUTSIDE, top-stitch as basted, keeping ruffle free.

FOR VIEWS A, B

41. Make buttonholes in right front and collar band at markings.

42. Lap opening edges, matching centers. Using buttonholes as guide, make button markings on left front. Sew buttons at markings. Sew button to collar band at small dot.

FOR VIEW C

43. Make buttonholes in right front at markings.

44. Lap opening edges, matching centers. Using buttonholes as guide, make button markings on left front. Sew buttons at markings.

CONTINUE AS FOLLOWS FOR ALL VIEWS

45. Turn up 1 1/4" (3.2cm) hem on lower edge of dress. Turn 1/4" (6mm) on raw edge of hem to wrong side; press. Stitch close to inner edge of hem.



Congrats!

You've completed your sewing adventure

SHARE YOUR LOOK



Post your pattern and tag us
@simplicity_creative_group and **#simplicitypatterns**
for a chance to be featured on our social media.

Look for more PDF patterns at **simplicity.com**

Have a question or need help with your sewing project call us at
1-888-588-2700



Simplicity ©2023 a division of IG Design Group Americas Inc. • Atlanta, GA 30342 USA www.thedesigngroup.com • All Rights Reserved. www.simplicity.com • Made in the U.S.A. Fabriqué aux États-Unis.

To be used for individual private home use only and not for commercial or manufacturing purposes. • A usage privé seulement et non à des fins commerciales ou de production en série. • Para uso privado solamente, no se puede utilizar con propósitos de comercialización o de producción en serie.