

S9829

Simplicity

easy-to-sew



Easy

MEN'S HALF-ZIP HOODIE

Suggested Fabrics: Corduroy, Cotton Blends, Flannel, French Terry, Lightweight Denim, Lightweight Wool Blends, Linen Blends, Ponte, Stretch Wovens, Tweed. **Lining:** Cotton Blends, Polyester Blends. **Interfacing:** Lightweight Fusible.

Notions: 14" (36cm) nylon coil zipper (cut to fit), 1½ yds. (1.4m) of 1" (2.5cm) elastic, 1½ yds. (1.5m) of 2½" (6cm) elastic.

Sizes	S	M	L	XL	XXL
	(34-36)	(38-40)	(42-44)	(46-48)	(50-52)
European	44-46	48-50	52-54	56-58	60-62

BODY MEASUREMENTS: Select pattern size based on body measurements

Chest	34-36	38-40	42-44	46-48	50-52	Ins.
Waist	28-30	32-34	36-39	42-44	46-48	"
Hip	35-37	39-41	43-45	47-49	51-53	"

Hoodie

45"*	¾	¾	¾	¾	¾	Yds.
60"*	2¼	2¼	2½	2½	2¾	"

Contrast (Sleeve Casing, Lower Casing): 45, 60"* - ½ yd.

Lining

45"*	¾	¾	¾	¾	¾	Yd.
------	---	---	---	---	---	-----

Interfacing

20"	¾ yd.
-----	-------

FINISHED GARMENT MEASUREMENTS (Includes Design and Wearing Ease)

Chest	44	48	52	56	60	Ins.
Waist	43½	47½	51½	55½	59½	"
Width, lower edge						
Hoodie	44	48	52	56	60	Ins.
Finished back length from base of neck						
Hoodie	26	26½	27	27½	28	Ins.

*without nap **with nap

Facile

SWEAT À CAPUCHE DEMI-ZIPPÉ POUR HOMMES

Tissus Conseillés: Velours côtelé, Cotonnades, Flanelle, Tissu bouclette, Denim léger, Mélanges de laine légère, Lin mélangés, Ponte, Tissus tissés extensibles, Tweed.

Doublure: Cotonnades, mélanges de polyester. **Entoilage:** Thermocollant léger.

Mercerie: Fermeture à glissière spirale de nylon de 36cm (coupée pour ajuster), 1.4m d'élastique de 2.5cm, 1.5m d'élastique de 6cm.

Tailles	P/S	M/M	G/L	TG/XL	TTG/XXL
Fr/Eur	44-46	48-50	52-54	56-58	60-62

MESURES DU CORPS: Choisissez la taille du patron basée sur les mesures du corps

Poitrine	87-92	97-102	107-112	117-122	127-132	cm
Taille	71-76	81-87	92-99	107-112	117-122	"
Hanches	89-94	99-104	109-115	119-124	128-135	"

Sweat à capuche

115cm*	3.0	3.0	3.1	3.2	3.3	m
150cm*	2.1	2.1	2.2	2.4	2.5	"

Contraste (Coulisse de manche, coulisse inférieure): 115, 150cm* - 0.5m.

Doublure

115cm*	0.7	0.7	0.8	0.8	0.8	m
--------	-----	-----	-----	-----	-----	---

Entoilage

51cm	0.6m
------	------

MESURES DES VÊTEMENTS FINI (Motif et aisance de port compris)

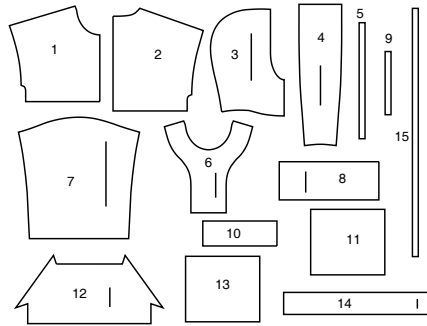
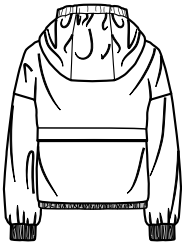
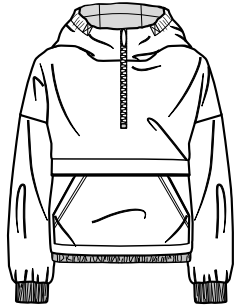
Poitrine	112	122	132	142	152	cm
Taille	110	121	131	141	151	"
Largeur à l'ourlet						
Sweat à capuche	112	122	132	142	152	cm
Longueur finie – dos, votre nuque à l'ourlet						
Sweat à capuche	66	67	69	70	71	cm

*sans sens **avec sens



Simplicity®

Thank you for purchasing this Simplicity pattern. We made every effort to provide you with a high quality product.



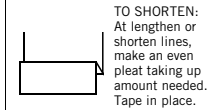
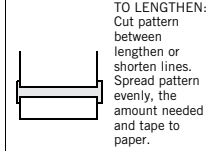
- 1 Upper Front
- 2 Upper Back
- 3 Hood
- 4 Hood Center
- 5 Elastic Guide for Hood
- 6 Front Facing
- 7 Sleeve
- 8 Sleeve Casing
- 9 Elastic Guide for Sleeve
- 10 Front and Back Band
- 11 Lower Front
- 12 Pocket
- 13 Lower Back
- 14 Casing
- 15 Elastic Guide for Lower Edge

The Pattern

- SYMBOLS**
- ↔ GRAIN LINE Place on straight grain of fabric parallel to selvage
 - ▬ PLACE SOLID LINE on fold of fabric.
 - - - CENTER FRONT OR BACK of garment.
 - ∇ NOTCHES
 - DOTS
 - CUTTING LINE
 - ▬▬ LENGTHEN OR SHORTEN LINES

SEAM ALLOWANCE: 5/8" (1.5cm) unless otherwise stated is included but not printed on MULTI-SIZE PATTERNS. Mark your size with colored felt tip pen. See chart on tissue for how to use MULTI-SIZE PATTERNS.

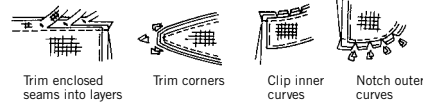
ADJUST IF NEEDED
Make adjustments before placing pattern on fabric.



When lengthen or shorten lines are not given, make adjustments at lower edge of pattern.

Sewing

- SEW garment following **Sewing Directions**.
- PIN or machine-baste seams matching notches.
- STITCH 5/8" (1.5 cm) seams unless otherwise stated.
- PRESS seams open unless otherwise indicated clipping when necessary so seams will lie flat.
- TRIM seams to reduce bulk, as shown below.



General Directions

Cutting/Marking

BEFORE CUTTING:
PRESS pattern pieces with a warm dry iron. PRE-SHRINK fabric by pre-washing washables or steam-pressing non-washables.

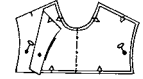
CIRCLE your cutting layout.
PIN pattern to fabric as shown in Cutting Layouts.

- FOR DOUBLE THICKNESS: Fold fabric with RIGHT sides together.
- FOR SINGLE THICKNESS: Place fabric RIGHT side up.
- FOR PILE, SHADED OR ONE WAY DESIGN FABRICS: Use "with nap" layouts

AFTER CUTTING:
Transfer markings to WRONG side of fabric before removing pattern. Use pin and chalk method or dressmaker's tracing paper and wheel.

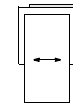
To Quick Mark:

- Snip edge of fabric to mark notches, ends of fold lines and center lines.
- Pin mark dots.

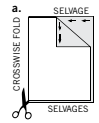


SPECIAL CUTTING NOTES

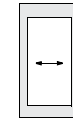
★ If layout shows a piece extending past fold, cut out all pieces except piece that extends.



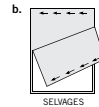
✱ Mark small arrows along both selvages indicating direction of nap or design. Fold fabric crosswise with RIGHT sides together, and cut along fold (a).



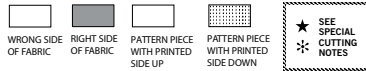
Open out fabric to single thickness. Cut extending piece on RIGHT side of fabric in position shown.



Turn one fabric layer around so arrows on both layers go in the same direction. Place RIGHT sides together (b).



Cutting Layouts

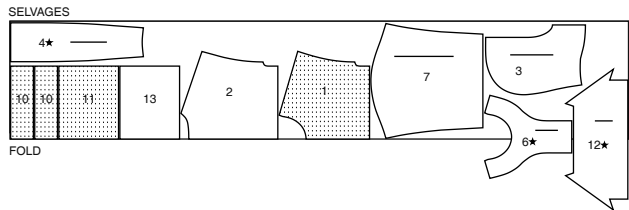


POSITION OF PATTERN PIECES MAY VARY SLIGHTLY ACCORDING TO YOUR PATTERN SIZE

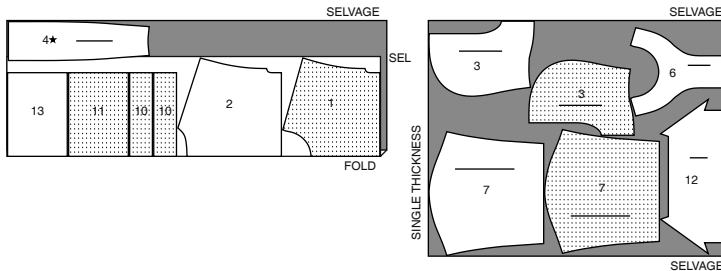
HALF ZIP HOODIE

USE PIECES 1 2 3 4 6 7 10 11 12 13

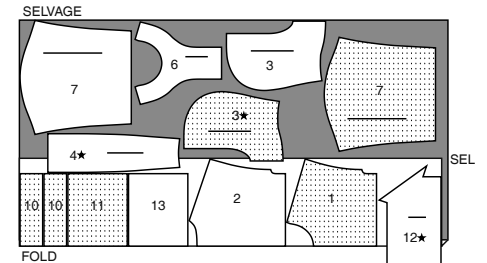
45" (115CM) WITH NAP SIZES S-M-L



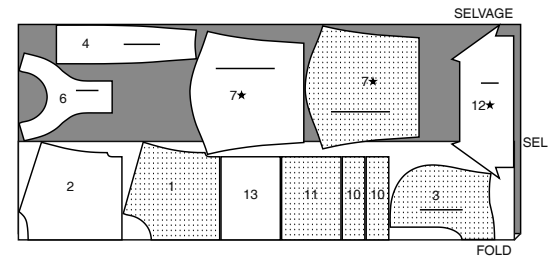
45" (115CM) WITH NAP SIZES XL-XXL



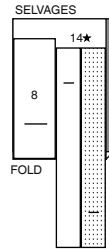
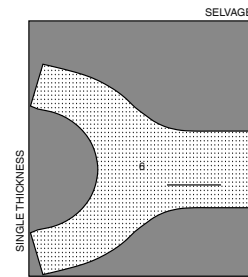
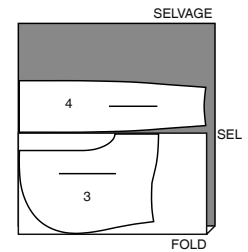
60" (150CM) WITH NAP SIZES S-M-L



60" (150CM) WITH NAP SIZES XL-XXL



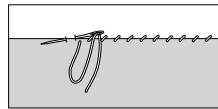
CUTTING LAYOUTS CONTINUED ON PAGE 2

CONTRAST: CUFFS AND HEM BAND
USE PIECES 8 1445" TO 60" (115CM TO 150CM)
WITH NAP
ALL SIZES**INTERFACING**
USE PIECES 620" (51CM)
ALL SIZES**LINING**
USE PIECES 3 445" (115CM)
WITHOUT NAP
ALL SIZES

SEWING TUTORIALS

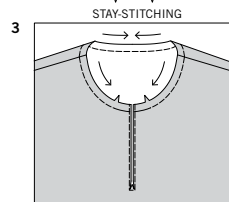
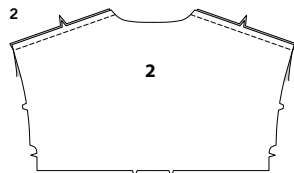
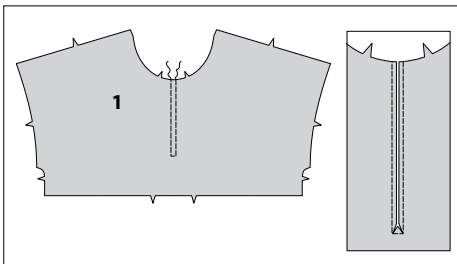


SCAN ME

Build your skills viewing short, easy-to-follow videos at
simplicity.com/sewingtutorials

SLIPSTITCH

1

**Sewing Directions**

FABRIC KEY

RIGHT SIDE WRONG SIDE INTERFACING LINING LINING

Read **General Directions** on page 1 before you begin.Sewing methods in **BOLD TYPE** have Sewing Tutorial Video available.
Scan QR CODE to watch videos:**EDGESTITCH** - see Machine Stitches: "how to edgestitch" video.**REINFORCE** - see Machine Stitches: "how to reinforce" video.**STAYSTITCH** - see Machine Stitches: "how to do stay-stitching" video.**FINISH** - see Seams: "how to finish seam allowances" video.**SLIPSTITCH** - Slide needle through a folded edge, then pick up a thread of underneath fabric.**PATTERN PIECES WILL BE IDENTIFIED BY NUMBERS THE FIRST TIME THEY ARE USED.****STITCH SEAMS WITH RIGHT SIDES TOGETHER UNLESS OTHERWISE STATED.****HALF ZIP HOODIE****UPPER FRONT AND BACK**

1. To reinforce Upper front (1), machine-stitch along stitching lines, pivoting at corners. Slash along center front and diagonally to corners.

2. Stitch Upper back (2) to upper front at overarms.

3. **STAYSTITCH** neck edge of upper front and back between notches.

HOOD

4. To reinforce each Hood (3) section, machine-stitch along stitching line, from lower edge to dot.

5. **STAYSTITCH** long edges of Hood center (4) above notches.

6. With right sides together, pin hood center to each hood section, matching notches and stitching lines, clipping hood center where necessary. Stitch. Trim seams; press toward center back.

7. With right sides together, pin hood to upper front/back neck edge, matching notches and stitching lines, clipping upper front/back neck edge where necessary. Stitch. Trim seams; turn toward hood.

ZIPPER

8. NOTE: It may be necessary to shorten zipper. To make new zipper stop, place zipper along front opening edge at dot (with pull tab 1/4" (6mm) below seamline). Mark placement of new zipper stop at lower opening edge. Whipstitch across teeth at marking. Cut zipper 3/4" (2cm) below the new stop.

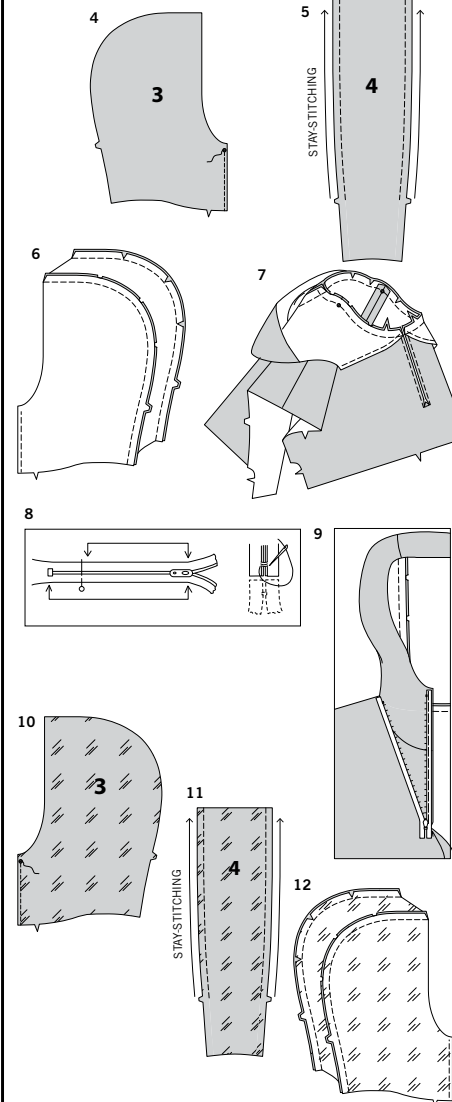
9. Open zipper. With right sides together, pin right side of zipper face down to right front opening edge of upper front and hood, placing zipper top stop at dot and zipper teeth 1/4" (6mm) over stitching line. Baste. Baste left side of zipper to left front opening edge in the same manner.

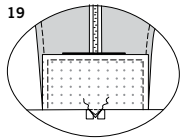
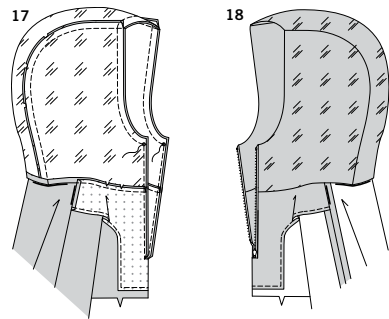
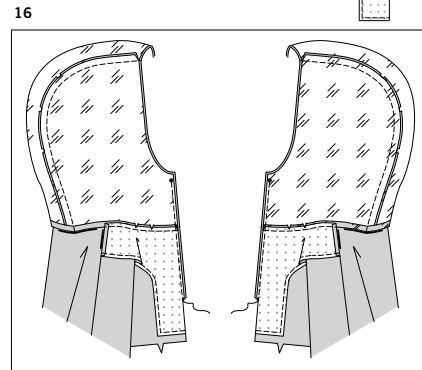
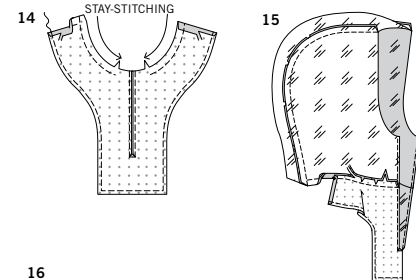
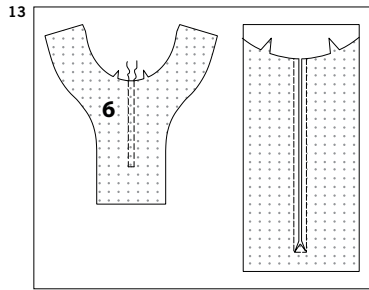
HOOD LINING AND FRONT FACING**HOOD LINING**

10. To reinforce each hood Lining (3) section, machine-stitch along stitching line, from lower edge to dot.

11. **STAYSTITCH** long edges of hood center Lining (4) above notches.

12. With right sides together, pin hood center lining to each hood lining section, matching notches and stitching lines, clipping hood center lining where necessary. Stitch. Trim seams; press toward center back.





FRONT FACING

- 13.** Apply fusible interfacing to **WRONG** side of Front facing (6), following manufacturer's directions.
To reinforce front facing, machine-stitch along stitching lines, pivoting at corners.
Slash along center front and diagonally to corners.

- 14.** **STAYSTITCH** neck edges of facing above notch.
Press under 5/8" (1.5cm) on shoulder edges of front facing. Trim pressed edges to 3/8" (1cm).
FINISH long unnotched edges of front facing.

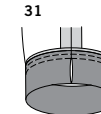
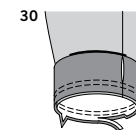
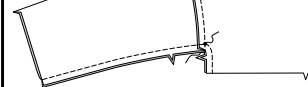
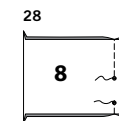
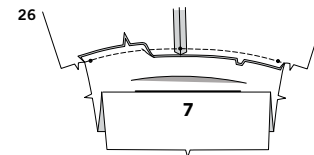
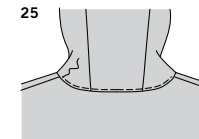
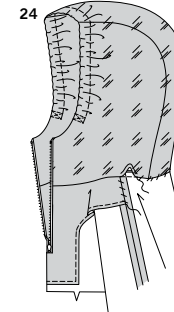
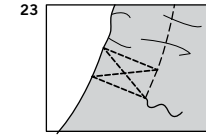
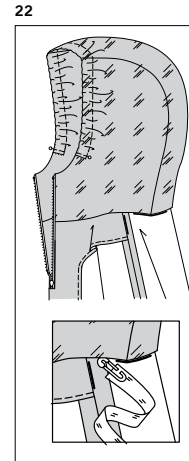
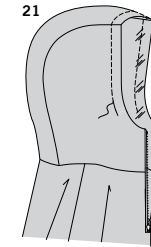
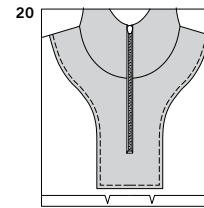
- 15.** With right sides together, pin front facings to neck edge of hood lining, matching notches, stitching lines and shoulder edges to dots, clipping facing where necessary. Stitch; trim seams. Press seams toward lining, turning in remainder of lining neck edge along seamline.

- 16.** With right sides together, pin hood lining/front facing to hood/upper front (over zipper), matching seams and stitching lines. Stitch front edges along stitching lines, using a zipper foot.

- 17.** Stitch front edges of hood/hood lining between dots; trim seam.

- 18.** Turn facing and hood lining to inside, turning zipper out. Turn triangle ends to inside; press.

- 19.** With right sides together, pin lower end of front facing to lower end of front opening, matching stitching lines. Stitch along stitching line, stitching through triangles and zipper.



- 20.** Turn facing down.

- 21.** To form casing in hood, stitch along stitching line, through all thicknesses.
Cut a piece of 1" (2.5cm) wide elastic using Elastic guide for hood (5) pattern piece.

- 22.** Insert elastic through opening in lining and hood casing, having ends even with casing stitching lines; pin ends.

- 23.** On outside, stitch ends of elastic securely to hood across ends and along stitching lines, forming squares, as shown.

- 24.** **SLIPSTITCH** pressed edge of hood lining over back neck edge.
SLIPSTITCH pressed edges of front facings to overarm seams.

- 25.** On outside, stitch close to back neck edge of hood.

SLEEVE AND UNDERARM SEAM

- 26.** With right sides together, pin Sleeve (7) to armhole edge of upper front and back, matching outer dots and center dot to overarm seam; Stitch between outer dots. Trim seams; press seams flat. Turn seams toward sleeve.

- 27.** Pin underarm seam of garment and sleeve, matching armhole seams and dots. Stitch, breaking stitching at dots.

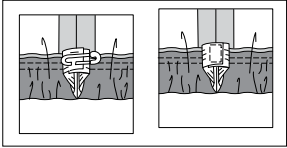
- 28.** With right sides together, pin ends of Sleeve casing (8), matching notches and dots. Stitch, leaving an opening between dots, as shown. Back-stitch at dots to reinforce seam. Press seam open.

- 29.** Fold casing in half lengthwise, with wrong sides together, matching notches and seams, having raw edges even. Press; baste raw edges.

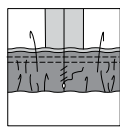
- 30.** On outside, pin casing to lower edge of sleeve, matching notches and seams, having opening uppermost. Stitch. Stitch again 1/4" (6mm) from first stitching within the seam allowance. Trim close to second stitching.

- 31.** Press seam toward sleeve, pressing casing out.
Cut two pieces of 2-1/2" (6.3cm) wide elastic, each using Elastic guide for sleeve (9) pattern piece.

32



33

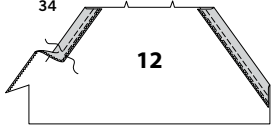


32. Insert elastic through opening in casing. Overlap ends and hold with safety pin. Try on and adjust to fit. Stitch ends of elastic together securely.

33. **SLIPSTITCH** opening edges of casing together. Distribute fullness evenly.

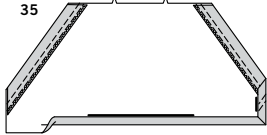
TIP- To secure elastic so it won't twist in wearing, stitch through all thicknesses of casing in the groove of seam.

34

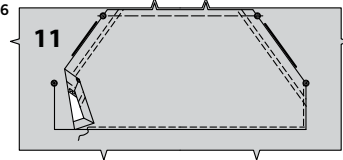


12

35

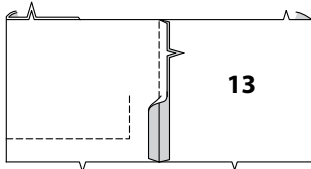


36



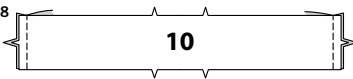
11

37



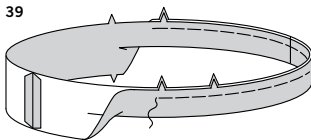
13

38

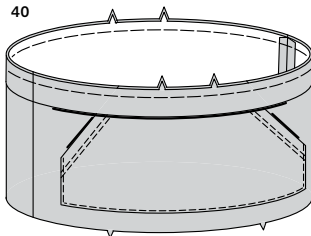


10

39



40



POCKET AND LOWER SECTION

34. Finish slanted edges of Pocket (12) with a zig-zag stitch, OR overlock/serge raw edge. Turn slanted edges to inside on foldline, forming facing. Stitch 1" (2.5cm) along slanted edge of pocket and 1/4" (6mm) above.

35. Turn under 5/8" (1.5cm) on sides and lower edge, folding in corners diagonally; press.

36. On outside, pin pocket to Lower front (11) along pocket lines, matching centers and dots, having raw edges even. Baste raw edges. **EDGESTITCH** sides and lower edge of pocket.

37. With right sides together, pin Lower back (13) to lower front at sides. Stitch.

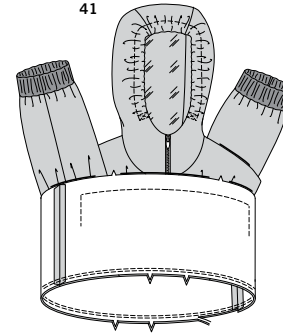
FRONT AND BACK BAND

38. With right sides together, pin Front and back band (10) sections, matching notches. Stitch side seams.

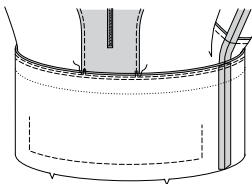
39. Fold band in half lengthwise, with wrong sides together, matching notches, centers and seams, having raw edges even. Press; baste raw edges.

40. On outside, pin front and back band to lower front and back (over pocket), matching centers and side seams. Baste.

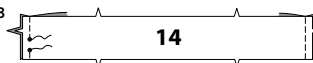
41



42

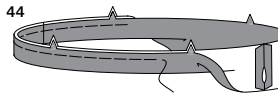


43

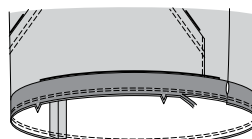


14

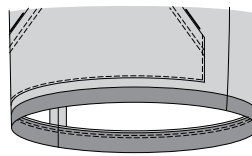
44



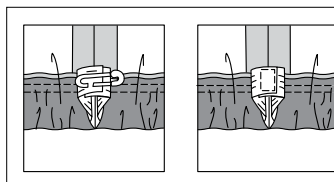
45



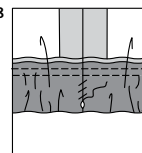
46



47



48



41. With right sides together, pin lower section and band to lower edge of upper section, matching notches, centers and side seams. Stitch. Stitch again 1/4" (6mm) from first stitching within the seam allowance. Trim close to second stitching.

42. Press seam toward upper section, pressing band and lower section out. Tack side edges of front facing to seams.

LOWER CASING

43. With **RIGHT** sides together, stitch seams of Casing (14), leaving an opening in **LEFT** side seam between dots, as shown. Back-stitch at dots to reinforce seam. Press seams open.

44. Fold casing in half lengthwise, with **WRONG** sides together, matching notches and seams, having raw edges even. Press; baste raw edges.

45. On outside, pin casing to lower edge of hoodie, matching notches, centers and seams, having opening uppermost. Stitch. Stitch again 1/4" (6mm) from first stitching within the seam allowance. Trim close to second stitching.

46. Press seam toward hoodie, pressing casing out. Cut a piece of 1" (2.5cm) wide elastic using Elastic guide for lower edge (15) pattern piece.

47. Insert elastic through opening in casing. Overlap ends and hold with safety pin. Try on hoodie and adjust to fit. Stitch ends of elastic together securely.

48. **SLIPSTITCH** opening edges of casing together. Distribute fullness evenly.

TIP- To secure elastic so it won't twist in wearing, stitch through all thicknesses of casing in the groove of each seam.



Congrats!

You've completed your sewing adventure

**SHARE
YOUR** LOOK



Post your pattern and tag us
@simplicity_creative_group and **#simplicitypatterns**
for a chance to be featured on our social media.

Look for more PDF patterns at **simplicity.com**

Have a question or need help with your sewing project call us at
1-888-588-2700



Simplicity ©2023 a division of IG Design Group Americas Inc. • Atlanta, GA 30342 USA www.thedesigngroup.com • All Rights Reserved. www.simplicity.com • Made in the U.S.A. Fabriqué aux États-Unis.

To be used for individual private home use only and not for commercial or manufacturing purposes. • A usage privé seulement et non à des fins commerciales ou de production en série. • Para uso privado solamente, no se puede utilizar con propósitos de comercialización o de producción en serie.