

S9828

**Simplicity**



Average

**UNISEX SWEATSHIRT AND PANTS**

**Suggested Fabrics:** Fleece, Micro-fleece, Ponte. **Contrast A:** Canvas, Cotton Blends, Ripstop Nylon, Twill. **Lining:** Cotton Blends, Polyester Blends. **Interfacing:** Lightweight Fusible.

**Notions:** **A:** 9" (23cm) zipper, 1½ yds. (1.4m) of ¼" - ⅝" (6mm - 10mm) elastic cord, one barrel stopper, ¾ yd. (0.7m) of 1¼" (3.2cm) elastic, 1½" (4cm) length of 1" (2.5cm) hook and loop tape. **B:** 1½ yds. (1.4m) of 1¼" (3.2cm) elastic (for waist), two 5" (13cm) zippers, 1 yd. (1.0m) of 1¼" (3cm) elastic (for legs), 2½ yds. (2.0m) of ¼" (6mm) cording (for drawstring).

| Sizes | XS    | S     | M     | L     | XL    | XXL   |
|-------|-------|-------|-------|-------|-------|-------|
|       | 30-32 | 34-36 | 38-40 | 42-44 | 46-48 | 50-52 |

**BODY MEASUREMENTS: Select pattern size based on body measurements**

|              | XS    | S     | M     | L     | XL    | XXL   |      |
|--------------|-------|-------|-------|-------|-------|-------|------|
| <b>Chest</b> | 30-32 | 34-36 | 38-40 | 42-44 | 46-48 | 50-52 | Ins. |
| <b>Waist</b> | 26-27 | 28-30 | 32-34 | 36-39 | 42-44 | 46-48 | "    |
| <b>Hip</b>   | 32-34 | 35-37 | 39-41 | 43-45 | 47-49 | 51-53 | "    |

**Sweatshirt A** 60\*\* 1¼ 1¼ 1¼ 1¼ 1¼ 1¼ Yds.

**Contrast A (Flap, Front Patch)** 60\*\* ¼ ¼ ¼ ¼ ¼ ½ Yd.

**Lining A (Pockets) - 45\*\* - ¾ yd.**

**Interfacing A** 20" - ¾ yd.

**Pants B** 60\*\* 1¼ 1¼ 2½ 2½ 2¾ 2¾ Yds.

**FINISHED GARMENT MEASUREMENTS (Includes Design and Wearing Ease)**

|   | XS  | S   | M   | L   | XL  | XXL |      |
|---|-----|-----|-----|-----|-----|-----|------|
| <b>A Chest/Bust</b>                           | 41  | 43  | 47  | 51  | 55  | 59  | Ins. |
| <b>A Waist</b>                                | 41  | 43  | 47  | 51  | 55  | 59  | "    |
| <b>B Hip</b>                                  | 39½ | 41½ | 45½ | 49½ | 53½ | 57½ | "    |
| <b>Width, each leg</b>                        |     |     |     |     |     |     |      |
| <b>Pants B</b>                                | 16  | 16½ | 17½ | 18½ | 19½ | 20½ | Ins. |
| <b>Finished back length from base of neck</b> |     |     |     |     |     |     |      |
| <b>Sweatshirt A</b>                           | 23¾ | 24½ | 25  | 25½ | 26  | 26½ | Ins. |
| <b>Finished side length from waist</b>        |     |     |     |     |     |     |      |
| <b>Pants B</b>                                | 43¾ | 44  | 44½ | 45  | 45½ | 46  | Ins. |

\*with nap \*\*without nap

Moins Facile

**SWEAT-SHIRT ET PANTALON UNISEXE**

**Tissus Conseillés:** Molleton, Micro-molleton, Ponte. **Contraste A:** Canevas, Cotonnades, Nylon indéchirable, Twill. **Doublure:** Cotonnades, Tissus mélangés de polyester. **Entoilage:** thermocollant léger.

**Mercerie:** **A:** 1 fermeture à glissière de 23cm, 1.4m de cordon élastique de 6mm - 10mm, 1 arrêt de cordon cylindre, 0.7m d'élastique de 3.2cm, 4cm de longueur de ruban autoagrippant de 2.5cm. **B:** 1.4m d'élastique de 3.2cm (pour la taille), 2 fermetures à glissière de 13cm, 1.0m d'élastique de 3cm (pour les jambes), 2.0m de cordon de 6mm (pour le cordon de coulisse).

| Tailles Fr/ Eur | TP/XS | P     | M     | G     | TG/XL | TTG/XXL |
|-----------------|-------|-------|-------|-------|-------|---------|
|                 | 40-42 | 44-46 | 48-50 | 52-54 | 56-58 | 60-62   |

**MESURES DU CORPS: Choisissez la taille du patron basée sur les mesures du corps**

|                 | XS    | S     | M      | L       | XL      | XXL     |    |
|-----------------|-------|-------|--------|---------|---------|---------|----|
| <b>Poitrine</b> | 76-81 | 87-92 | 97-102 | 107-112 | 117-122 | 127-132 | cm |
| <b>Taille</b>   | 66-69 | 71-76 | 81-87  | 92-99   | 107-112 | 117-122 | "  |
| <b>Hanches</b>  | 82-87 | 89-94 | 99-104 | 109-115 | 119-124 | 128-135 | "  |

**Sweat-shirt A** 150cm\* 1.5 1.6 1.7 1.7 1.7 1.7 m

**Contraste A (Rabat, plaquées devant)** 150cm\* 0.2 0.2 0.2 0.2 0.2 0.5 m

**Doublure A (Poches) - 115cm\*\* - 0.3m**

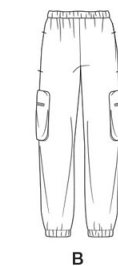
**Entoilage A** 51cm - 0.7m

**Pantalons B** 150cm\* 1.7 1.7 2.3 2.3 2.5 2.6 m

**MESURES DES VÊTEMENTS FINI (Motif et aisance de port compris)**

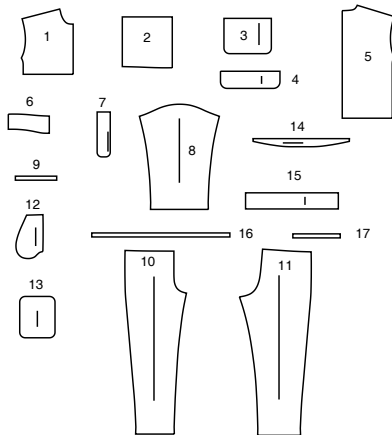
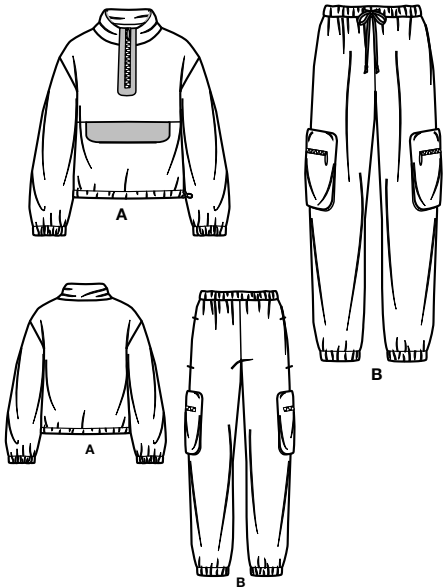
|   | XS  | S   | M   | L   | XL  | XXL |    |
|---|-----|-----|-----|-----|-----|-----|----|
| <b>A Poitrine</b>                                   | 104 | 109 | 119 | 130 | 140 | 150 | cm |
| <b>A Taille</b>                                     | 104 | 109 | 119 | 130 | 140 | 150 | "  |
| <b>B Hanches</b>                                    | 100 | 105 | 116 | 126 | 136 | 146 | "  |
| <b>Largeur, chaque jambe</b>                        |     |     |     |     |     |     |    |
| <b>Pantalons B</b>                                  | 41  | 42  | 44  | 47  | 50  | 52  | cm |
| <b>Longueur finie - dos, votre nuque à l'ourlet</b> |     |     |     |     |     |     |    |
| <b>Sweat-shirt A</b>                                | 63  | 62  | 64  | 65  | 66  | 67  | cm |
| <b>Longueur finie - côté, taille à l'ourlet</b>     |     |     |     |     |     |     |    |
| <b>Pantalons B</b>                                  | 111 | 112 | 113 | 114 | 116 | 117 | cm |

\*avec sens \*\*sans sens



# Simplicity®

Thank you for purchasing this Simplicity pattern. We made every effort to provide you with a high quality product.



- 1 UPPER FRONT - A
- 2 LOWER FRONT - A
- 3 POCKET - A
- 4 FLAP - A
- 5 BACK - A
- 6 COLLAR - A
- 7 FRONT PATCH - A
- 8 SLEEVE - A
- 9 ELASTIC GUIDE FOR SLEEVE - A
- 10 FRONT - B
- 11 BACK - B
- 12 FRONT POCKET - B
- 13 POCKET - B
- 14 GUSSET - B
- 15 CASING - B
- 16 ELASTIC GUIDE FOR WAIST - B
- 17 ELASTIC GUIDE FOR LEG - B

## General Directions

### The Pattern

- SYMBOLS**
- ↔ GRAIN LINE Place on straight grain of fabric parallel to selvage
  - ▬ PLACE SOLID LINE on fold of fabric.
  - - - CENTER FRONT OR BACK of garment.
  - ∇ NOTCHES
  - ° ○ DOTS
  - CUTTING LINE
  - ▬ LENGTHEN OR SHORTEN LINES

SEAM ALLOWANCE: 5/8" (1.5cm) unless otherwise stated is included but not printed on MULTI-SIZE PATTERNS. Mark your size with colored felt tip pen. See chart on tissue for how to use MULTI-SIZE PATTERNS.

### ADJUST IF NEEDED

Make adjustments before placing pattern on fabric.

**TO LENGTHEN:** Cut pattern between lengthen or shorten lines. Spread pattern evenly, the amount needed and tape to paper.

**TO SHORTEN:** At lengthen or shorten lines, make an even pleat taking up amount needed. Tape in place.

When lengthen or shorten lines are not given, make adjustments at lower edge of pattern.

### Cutting/Marking

#### BEFORE CUTTING:

PRESS pattern pieces with a warm dry iron. PRE-SHRINK fabric by pre-washing washables or steam-pressing non-washables.

CIRCLE your cutting layout.

PIN pattern to fabric as shown in Cutting Layouts.

• FOR DOUBLE THICKNESS: Fold fabric with RIGHT sides together.

• FOR SINGLE THICKNESS: Place fabric RIGHT side up.

• FOR PILE, SHADED OR ONE WAY DESIGN FABRICS: Use "with nap" layouts

**AFTER CUTTING:** Transfer markings to WRONG side of fabric before removing pattern. Use pin and chalk method or dressmaker's tracing paper and wheel.

#### To Quick Mark:

- Snip edge of fabric to mark notches, ends of fold lines and center lines.
- Pin mark dots.



### Sewing

- SEW garment following Sewing Directions.
- PIN or machine-baste seams matching notches.
- STITCH 5/8" (1.5 cm) seams unless otherwise stated.
- PRESS seams open unless otherwise indicated clipping when necessary so seams will lie flat.
- TRIM seams to reduce bulk, as shown below.



Trim enclosed seams into layers



Trim corners



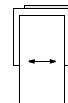
Clip inner curves



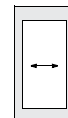
Notch outer curves

### SPECIAL CUTTING NOTES

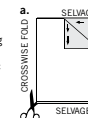
★ If layout shows a piece extending past fold, cut out all pieces except piece that extends.



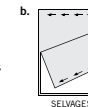
Open out fabric to single thickness. Cut extending piece on RIGHT side of fabric in position shown.



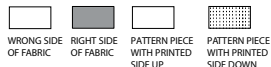
✱ Mark small arrows along both selvages indicating direction of nap or design. Fold fabric crosswise with RIGHT sides together, and cut along fold (a).



Turn one fabric layer around so arrows on both layers go in the same direction. Place RIGHT sides together (b).



## Cutting Layouts

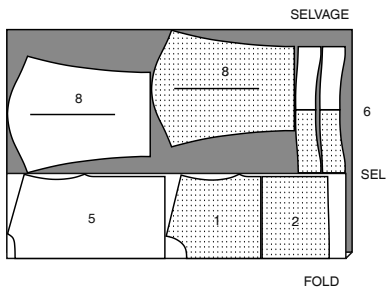


POSITION OF PATTERN PIECES MAY VARY SLIGHTLY ACCORDING TO YOUR PATTERN SIZE

### SWEATSHIRT A

USE PIECES 1 2 5 6 8

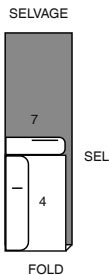
60" (150CM) WITH NAP ALL SIZES



### CONTRAST A (FLAP, FRONT PATCH)

USE PIECE 4 7

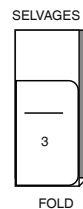
60" (150CM) WITH NAP ALL SIZES



### LINING A (POCKETS)

USE PIECE 3

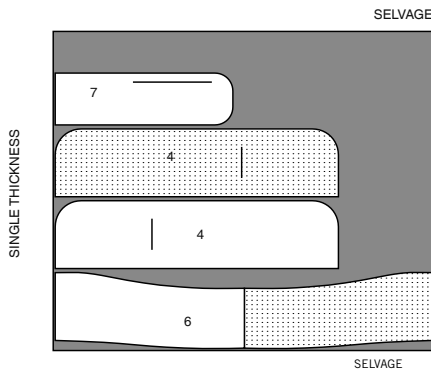
45" (115CM) WITHOUT NAP ALL SIZES



### INTERFACING A

USE PIECES 4 6 7

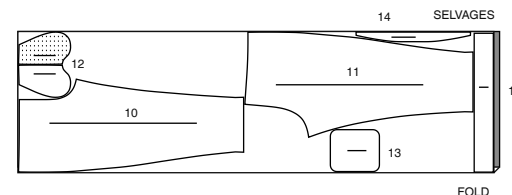
20" (51CM) ALL SIZES



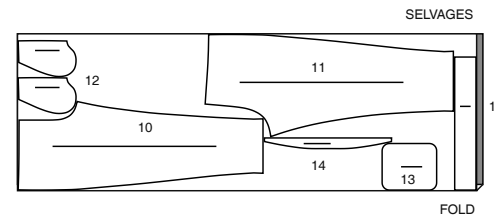
### PANTS B

USE PIECES 10 11 12 13 14 15

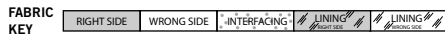
60" (150CM) WITH NAP SIZES XS S M L



60" (150CM) WITH NAP SIZES XL XXL



## Sewing Directions



Read **General Directions** on page 1 before you begin.

### SIMPLY THE BEST SEWING TECHNIQUES...

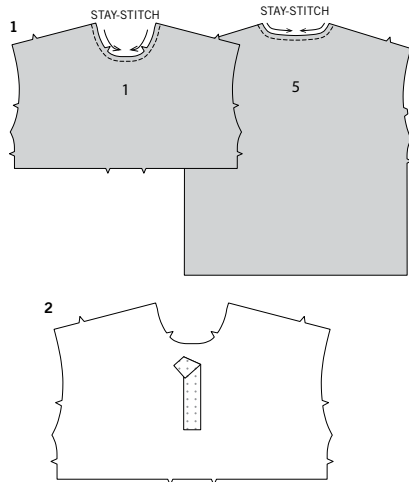
#### FOR FLEECE

- When pinning pieces together, use long pins...the kind with bead heads are best because short pins tend to get lost in the fleece.
- Use a ball point needle. When stitching, try using a narrow zig-zag stitches, adjusting the width and length for the type of fleece you are using. Always test first on some scraps and keep for reference.
- Sew slowly and carefully the first time you stitch a seam as stitches are hard to remove. When sewing around shaped areas sew slowly being careful not to stretch the fleece as you feed fabric through your machine.
- To prevent shoulder seams from stretching, pin center of hem tape, clear elastic or twill tape along seam line on front shoulder edges, then stitch the shoulder seams.
- Finger press or steam press on a low temperature setting using a press cloth.
- Hems and inner edges of casing can be stitched 1/4" (6mm) from raw edge.

#### SEWING TUTORIALS



Build your skills viewing short, easy-to-follow videos at [simplicity.com/sewingtutorials](http://simplicity.com/sewingtutorials)



#### FOR PONTE

- Ponte is a double knit fabric with a stable hand.
- Use a ball point or stretch needle. Use a straight stitch or very narrow zigzag stitch (0.2mm). Test first on a scrap of fabric.
- Decrease pressure on presser foot to prevent stretching. Do not stretch while stitching. A walking foot will help feed layers through the sewing machine.
- Some knits require very little or no pressing while sewing. Use the appropriate temperature setting. Press lightly or use steam.
- Stabilize shoulder seams by pinning center of hem tape, clear elastic before stitching seams.
- Hems and inner edges of casing can be stitched 1/4" (6mm) from raw edge.
- Steam wavy seams with a steam iron on a synthetic setting or with a tailors' clapper.

Sewing methods in **BOLD TYPE** have Sewing Tutorial Video available. Scan QR CODE to watch videos:

**EDGE-STITCH-** see **how to edgestitch** video.

**REINFORCE-** see **how to reinforce seams** video.

**STAYSTITCH-** see **how to staystitch** video.

**SLIP-STITCH-** see **how to slipstitch** video.

**STITCH IN THE DITCH-** see **how to stitch** in the ditch video.

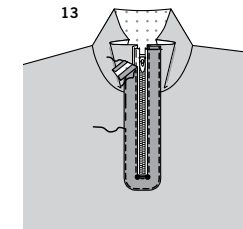
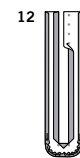
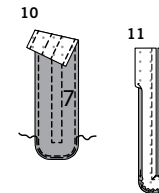
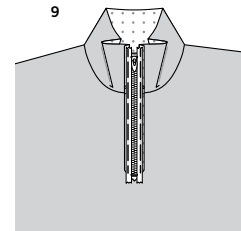
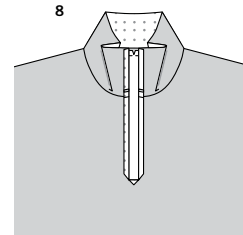
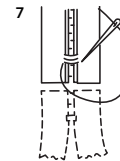
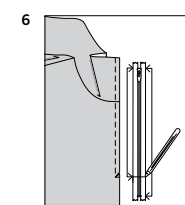
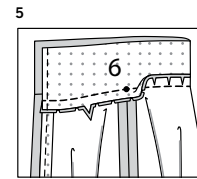
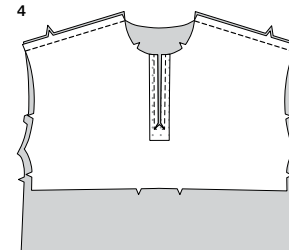
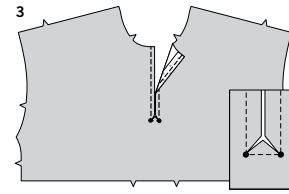
**TOPSTITCH-** see **how to topstitch** video.

**UNDERSTITCH-** see **how to understitch** video.

## SWEATSHIRT A

- STAYSTITCH** neck edge of front (1) and back (5) sections 1/2" (1.3cm) in direction of arrows.

- To support zipper, cut a remnant of lightweight fusible interfacing 1-1/2" (3.8cm) wide and 1" (2.5cm) longer than front zipper opening. On Inside, pin to **WRONG** side of front, centered over zipper opening and having upper raw edges even. Fuse in place following manufacturer's directions. **TIP-** You can substitute a remnant of woven fabric for fusible. Hand-baste close to outer edges. Remove basting after zipper is inserted and trim.



- REINFORCE** front along stitching lines, pivoting with needle in fabric at small dots. Slash along center front, clipping along diagonal line to corners, being careful not to clip through stitching.

- Stitch back to front at shoulders.

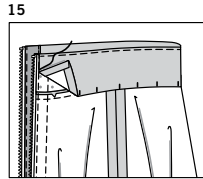
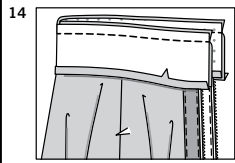
- Apply interfacing to **WRONG** side of collar (6), following manufacturer's directions. With **RIGHT** sides together and raw edges even, pin collar to neck edge, matching centers back and stitching lines, placing small dots at shoulder seams. Stitch. Trim seam, clip curves; turn seam toward collar. The remaining collar section will be used as the collar facing.

- It may be necessary to adjust the length of your zipper. Measure opening of top from upper edge to horizontal stitching, less 7/8" (2.2cm). Close zipper and measure from tab down along the teeth to length needed. Mark new length.

- With matching buttonhole twist or heavy duty thread, make several overcast stitches across zipper teeth at marking. Using wire cutters, remove the zipper teeth below the mark, leaving tape intact. Trim away lower end of zipper tape to within 1/2" (1.3cm) of overcast stitches.

**NOTE:** Use an adjustable zipper foot to insert zipper.

- Turn front and collar opening edges to **OUTSIDE** along stitching lines; press.
- On **OUTSIDE**, pin closed zipper, face up, to front opening edges, having top stop 7/8" (2.2cm) below upper raw edge and raw opening edges even with outer edges of tape. Hand-baste zipper in place.
- Apply interfacing to **WRONG** side of front patch (7). **REINFORCE** patch along stitching lines, pivoting with needle in fabric at small dots. Machine-stitch along 1/4" (6mm) seam line on side and lower edges. To ease curved edge of patch, stitch a 1/8" (3mm) **INSIDE** the **INSIDE** outer seam line, using a long machine-stitch. If you prefer, you can do this by hand.
- Press under outer raw edges along stitching. Pull up ease stitches to shape curve.
- Slash patch along center front, clipping along diagonal line to corners. Be careful not to clip through stitching.
- With **RIGHT** sides facing up towards you, pin patch to front (over zipper), matching centers and small dots. Hand-baste in place along inner, side, and lower edges. Machine-baste upper edges. **EDGE-STITCH** inner edges, pivoting with needle in fabric at small dots. **EDGE-STITCH** side and lower edges.



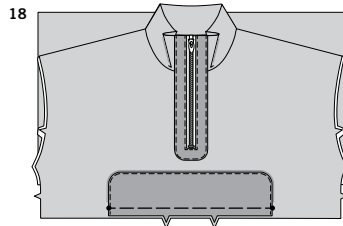
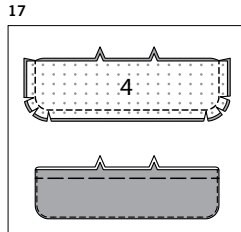
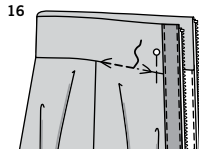
**14.** Press under 1/2" (1.3cm) on lower notched edge of collar facing. With RIGHT sides together and raw edges even, pin facing to collar, matching centers back (edge of facing will extend approximately 1/4" (6mm) beyond finished edges of collar). Stitch upper edges together. Trim seam.

**15. UNDERSTITCH** collar facing as far as possible. Turn facing to INSIDE; press.

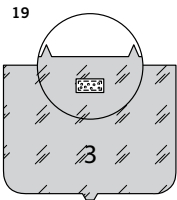
Turn under front edges of facing and pin to collar, clearing zipper teeth. Pin lower pressed edge 1/8" (3mm) over seam, placing pins on OUTSIDE. **SLIPSTITCH** front edges of facing to collar.

**16.** On OUTSIDE, **STITCH IN THE DITCH** of neck seam, catching in pressed edge of facing on INSIDE.

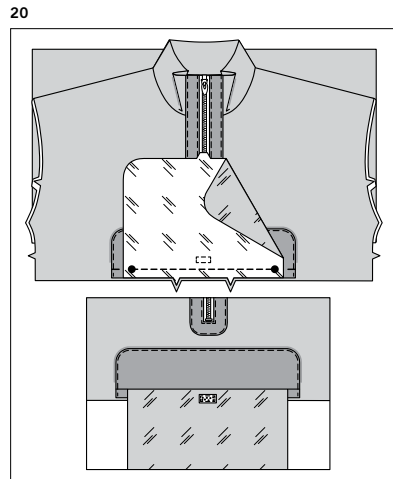
**17.** Apply interfacing to WRONG side of flap (4). Pin facing to flap along outer edges, matching centers. Stitch, leaving notched edges open. Trim seam. Clip curves. Understitch facing as far as possible. Turn flap RIGHT side out; press. Baste raw edges together.



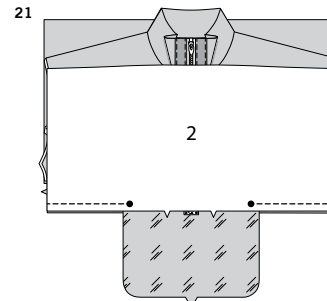
**18.** With RIGHT sides together, baste flap (Interfaced side) to lower edge of front, matching centers and small dots.



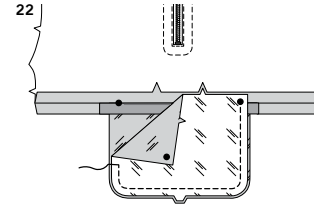
**19.** Cut one piece of hook and loop tape to fit within solid lines on pocket (3) section. Separate tape. On OUTSIDE, pin soft half of tape to one RIGHT side of one pocket section within solid lines. Stitch close to outer edges. The remaining pocket section will be used as the pocket facing.



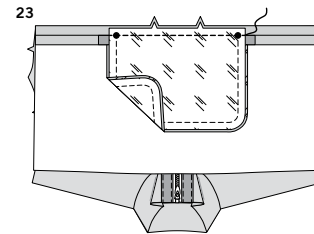
**20.** With RIGHT sides together, pin pocket to lower edge of front (over flap), matching centers and large dots. Stitch between large dots, back-stitching at large dots to reinforce seam. Press pocket out, pressing seam toward pocket.



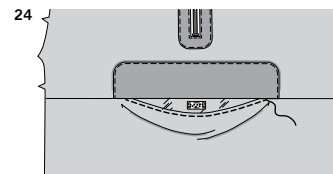
**21.** Pin lower front (2) to front (sandwiching flap), matching centers and large dots. Stitch, leaving seam open between large dots, keeping side edges of pocket free. Back-stitch at large dots to reinforce seam.



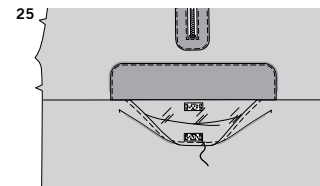
**22.** With RIGHT sides together, pin facing to pocket and seam allowance of upper front, matching centers and large dots. Stitch side and lower edges together between large dots, keeping upper and lower front free. Back-stitch at large dots to reinforce seam.



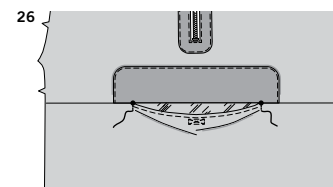
**23.** Pin seam allowance of facing and upper front together, matching large dots and having raw edges even. Stitch close to seam, being careful not to catch in upper and lower front.



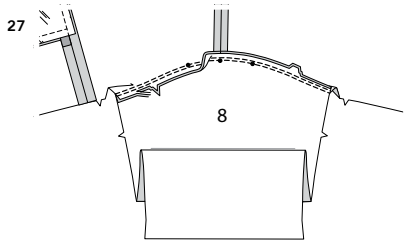
**24.** On OUTSIDE, turn flap away from pocket. top-stitch opening edge of pocket.



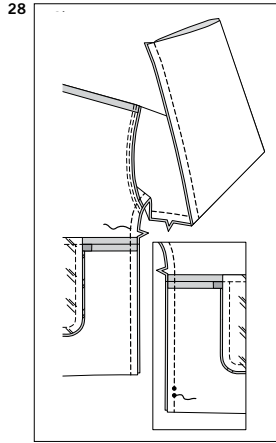
**25.** Open pocket and pin rough half of hook and loop tape to RIGHT side of pocket facing within solid lines. Stitch close to outer edges through all thicknesses.



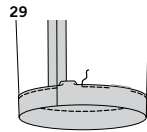
**26.** On OUTSIDE, stitch a perpendicular line from each small dot to about 1/2" (1.3cm) below each small dot. Stitch tape diagonally between stitching at corners.



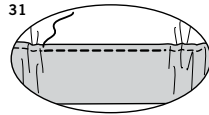
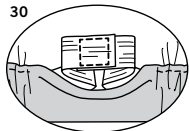
- 27.** Pin sleeve (8) to armhole edge with center small dot at shoulder seam, matching notches and remaining small dots. Stitch. Stitch again 1/8" (3mm) from first stitching. Trim seam below notches close to stitching. Press seam toward sleeve.



- 28.** Pin back to front at underarm and side seams, matching armhole seams. Stitch RIGHT side seam. Stitch LEFT side seam, leaving seam open between small dots; back-stitch at small dots to reinforce seam. Reinforce seams along underarm curves.

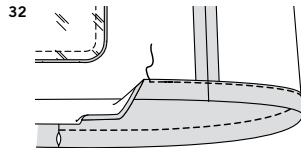


- 29.** Press lower edge of sleeve 1-5/8" (4cm) to INSIDE for casing. Turn under 1/4" (6mm) on raw edge. Stitch close to turned edge, leaving an opening to insert elastic.

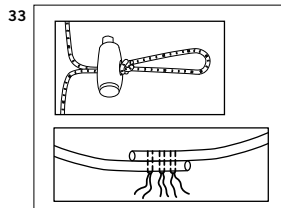


- 30.** Cut a piece of elastic the length of elastic guide for sleeve (9). Insert elastic through opening in casing. Overlap ends and stitch securely together.

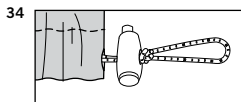
- 31.** Stitch opening closed. Distribute fullness evenly. **TIP**-To secure elastic so it won't twist in wearing, stitch through all thicknesses of casing in the groove of each seam.



- 32.** Press up 1-1/4" (3.2) hem on lower edge of shirt, forming casing; press under 1/4" (6mm) on inner raw edge. Stitch close to inner pressed edge.

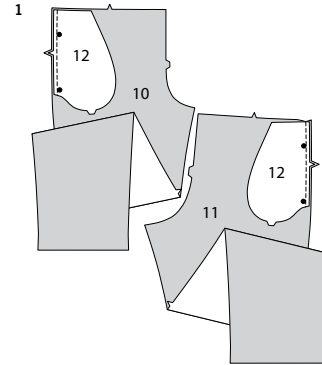


- 33.** Try on top to determine desired length of elastic cord, allowing extra length for loop and for joining ends. Add another 1" (2.5cm) if you wish to make a knot at the end of the loop. Insert one end cord through casing and then in and out of stopper, forming a loop. Lap ends of cord for about 1/2" (1.3cm) on each side of center and hand-sew together.

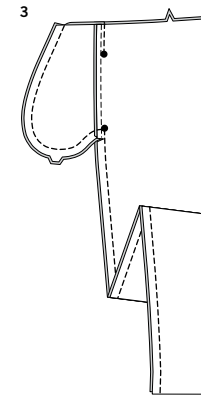
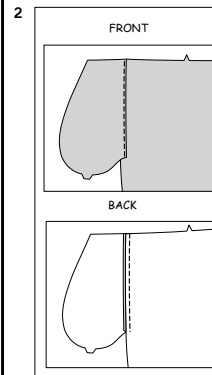


- 34.** Redistribute cord to conceal ends.

## PANTS B

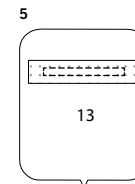
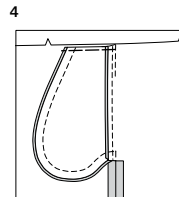


- 1.** Apply pockets to side edges of front and back as follows: With RIGHT sides together, pin pocket (12) to front (10) and back (11), matching large dots, having raw edges even. Stitch in a 3/8" (1cm) seam.



- 2.** Press seam toward pocket, pressing pocket out. **UNDERSTITCH** front pocket by stitching through pocket and seam allowance close to seam.

- 3.** Pin front to back at side seams, matching large dots. Stitch side seams, leaving an opening between large dots; back-stitch at large dot to reinforce seam. Stitch pocket edges together from side seam to upper edge.



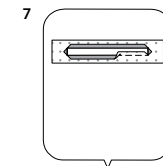
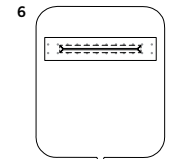
- 4.** Clip pants back seam allowance at end of pocket. Press seam open below clip. Press pocket toward front. Baste 1/4" (6mm) from upper edge of pocket.

- 5.** For each pocket (13), cut one remnant of fusible interfacing 1-1/2" (3.8cm) wide and 2" (5cm) longer than zipper opening. Pin remnant to WRONG side of pocket, centering over zipper opening. Fuse in place following manufacturer's directions. **REINFORCE** pocket along stitching lines, pivoting with needle in fabric at small dots.

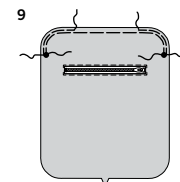
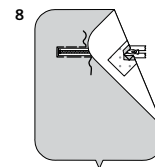
- 6.** Slash pocket between stitching, clipping diagonally to corners, being careful not to clip through stitching).

- 7.** Press under opening edges on pocket along stitching.

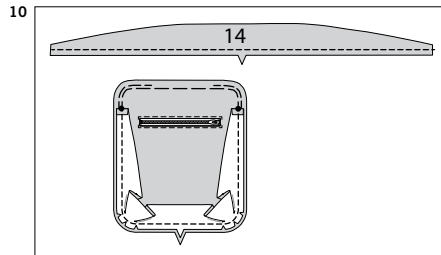
**NOTE:** When applying zippers to pockets, mirror placement of top stop so that once pockets are applied, zippers will open from front to back. Use an adjustable zipper foot to apply zippers.



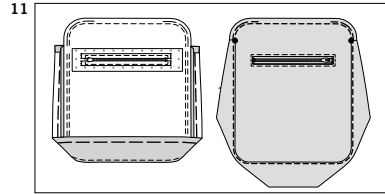
- 8.** Center WRONG side of pocket opening over zipper, having the top stop 1/8" (3mm) away from FRONT opening edge. Hand-baste zipper in place close to pressed edges.



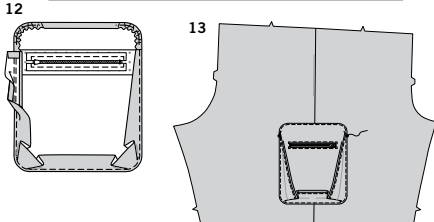
- 9.** **EDGE**STITCH inner edges of pocket opening. Stitch upper edges of pocket along 3/8" (1cm) seam line between small dots. To ease upper curved edges, stitch a 1/8" (3mm) INSIDE seam line, using a long machine-stitch. If you prefer, you can do this by hand.



- 10.** Machine stitch 3/8" (1cm) from notched edge of gusset (14). Pin gusset to pocket, matching small dots and notches, clipping gusset to stitching where necessary. Turn down upper edge of gusset above small dots. Stitch. **REINFORCE** seam along curves. Stitch side and lower edges in a 3/8" (1cm) seam, back-stitching at small dots to reinforce seam.

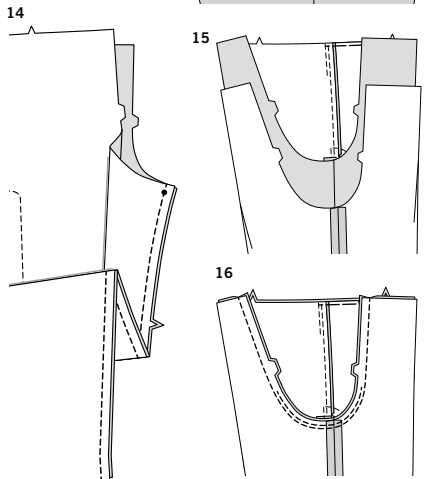


- 11.** Press gusset out, pressing seam toward gusset. **EDGE-STITCH** gusset between small dots.



- 12.** Press under outer edges of pocket along stitching. Pull up ease stitches to shape curve. Notch out fullness along curves as far as ease stitching where necessary to reduce bulk.

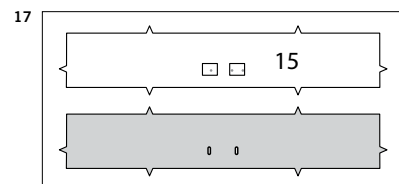
- 13.** Pin pocket over side seam of pants, matching small dots, having outer edges along placement line and top stop of zipper on front pants. **EDGE-STITCH** outer edges.



- 14.** Pin front to back at inner legs seams, matching small dots and notches. Stitch, stretching back to fit.

- 15.** With **RIGHT** sides together, insert one pant leg **INSIDE** the other.

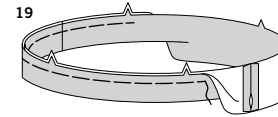
- 16.** With **RIGHT** sides together, pin center seam, matching inner leg seams and notches. Stitch. **REINFORCE** seam over first stitching.



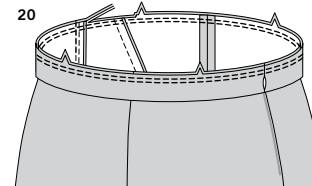
- 17.** To reinforce buttonholes on one casing (15) section, cut two remnants of fusible interfacing large enough to cover each button. Fuse to **WRONG** side of each buttonhole over each marking. Make buttonholes. This is the front casing.



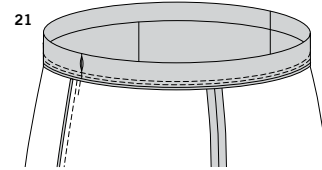
- 18.** With **RIGHT** sides together, stitch seams of casing sections, leaving an opening in **LEFT** side seam between small dots, as shown. Back-stitch at small dots to reinforce seam.



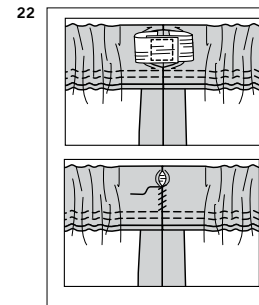
- 19.** Press seams open. Fold casing in half, lengthwise, with **WRONG** sides together, having raw edges even. Baste raw edges together. The side with the opening is the underside of the casing.



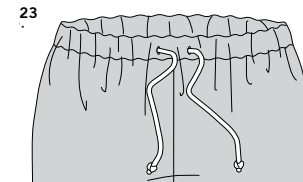
- 20.** With the underside of casing facing you, pin casing to pants matching centers and side seams. Stitch along seam line. Stitch again 1/4" (6mm) from first stitching within seam allowance. Trim close to second stitching.



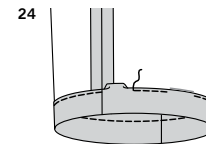
- 21.** Press seam toward pants, pressing casing out.



- 22.** Cut a piece of elastic to the length of elastic guide for waist (16). Insert elastic through opening. Overlap ends and stitch securely together. **SLIP-STITCH** opening edges of casing together. Distribute fullness evenly.

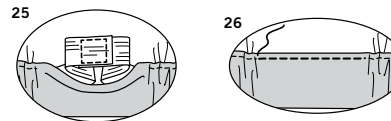


- 23.** Insert cord in and out of buttonholes, extending ends evenly in front. Try on pants, fasten cord, and knot ends at desired length. **TIP**-To secure elastic so it won't twist in wearing, stitch through all thicknesses of casing in the groove of each seam.



- 24.** Press 1-5/8" (4cm) on lower edge of leg to **INSIDE**, forming a casing. Press under 1/4" (6mm) on inner raw edge. Stitch close to inner raw edge of casing, leaving an opening to insert elastic.

- 25.** Cut a piece of elastic the length of elastic guide for leg (17). Insert elastic through casing. Overlap ends and stitch securely together.



- 26.** Stitch opening closed. Distribute fullness evenly. **TIP**-To secure elastic so it won't twist in wearing, stitch through all thicknesses of casing in the groove of each seam.



# Congrats!

You've completed your sewing adventure

---

**SHARE  
YOUR** LOOK



Post your pattern and tag us  
**@simplicity\_creative\_group** and **#simplicitypatterns**  
for a chance to be featured on our social media.

Look for more PDF patterns at **simplicity.com**

Have a question or need help with your sewing project call us at  
1-888-588-2700



Simplicity ©2023 a division of IG Design Group Americas Inc. • Atlanta, GA 30342 USA www.thedesigngroup.com • All Rights Reserved. www.simplicity.com • Made in the U.S.A. Fabriqué aux États-Unis.

To be used for individual private home use only and not for commercial or manufacturing purposes. • A usage privé seulement et non à des fins commerciales ou de production en série. • Para uso privado solamente, no se puede utilizar con propósitos de comercialización o de producción en serie.