

S9825

**Simplicity**



A



B



A

Average

**MISSES' JACKETS**

**Suggested Fabrics:** Crepe, Denim, Flannel, Linen Types, Sateen, Wool Types. **Contrast B** also in: Faux Leather and Suede, Satin. **Lining:** Poly Blends, Rayon, Silk. **Interfacing:** Lightweight Fusible.

**Notions:** A,B: Three ¾" (2.2cm) buttons, four ¼" (1.5cm) buttons, pair of shoulder pads, one 4" x 6" (10cm x 15cm) remnant of polyester fleece for sleeve heading.

| Sizes    | 8  | 10 | 12 | 14 | 16 | 18 | 20 | 22 | 24 | 26 |
|----------|----|----|----|----|----|----|----|----|----|----|
| European | 34 | 36 | 38 | 40 | 42 | 44 | 46 | 48 | 50 | 52 |

**BODY MEASUREMENTS:** Select pattern size based on body measurements

|                    |     |     |     |     |     |    |     |     |     |     |      |
|--------------------|-----|-----|-----|-----|-----|----|-----|-----|-----|-----|------|
| Bust               | 31½ | 32½ | 34  | 36  | 38  | 40 | 42  | 44  | 46  | 48  | Ins. |
| Waist              | 24  | 25  | 26½ | 28  | 30  | 32 | 34  | 37  | 39  | 41½ | "    |
| Hip-9" below waist | 33½ | 34½ | 36  | 38  | 40  | 42 | 44  | 46  | 48  | 50  | "    |
| Back-neck to waist | 15¾ | 16  | 16¼ | 16½ | 16¾ | 17 | 17¼ | 17¾ | 17½ | 17¾ | "    |

**Jacket A** 45\*\* 2¾ 2¾ 2¾ 2¾ 2¾ 3¼ 3¾ 3¾ 3¾ 3¾ Yds.

60\*\* 2¼ 2¼ 2¼ 2¼ 2¼ 2¾ 2¾ 2¾ 2¾ 2¾ "

**Lining A** 45\*\*\* 2¼ 2¼ 2¼ 2¼ 2¼ 2¾ 2¾ 2¾ 2¾ 2¾ "

**Interfacing A** 20\* 3½ 3¾ 3¾ 3¾ 3¾ 3¾ 3¾ 3¾ 3¾ 3¾ "

**Jacket B** 45\*\* 2¼ 2¼ 2¼ 2¼ 2¼ 2¾ 2¾ 2¾ 2¾ 2¾ Yds.

60\*\* 1¾ 1¾ 1¾ 1¾ 1¾ 1¾ 2¼ 2¼ 2¼ 2¼ "

**Contrast B (Upper Collar, Undercollar, Front Facings):** 45, 60\*\*

1 1 1 1 1 1 1 1 1 1 1 Yds.

**Lining B** 45\*\*\* 2 2 2 2 2 2 2 2 2 2 2 "

**Interfacing B** 20\* 3½ 3¾ 3¾ 3¾ 3¾ 3¾ 3¾ 3¾ 3¾ 3¾ "

**FINISHED GARMENT MEASUREMENTS (Includes Design and Wearing Ease)**

**A,B Bust** 38 39 40½ 42½ 44½ 46½ 48½ 50½ 52½ 54½ Ins.

**A,B Waist** 37 38 39½ 41½ 43½ 45½ 47½ 49½ 51½ 53½ "

**A,B Hip** 41½ 42½ 43½ 45½ 47½ 49½ 51½ 53½ 55½ 57½ "

**Width, lower edge**

**Jacket A,B** 43 44 45½ 47½ 49½ 51½ 53½ 55½ 57½ 59½ Ins.

**Finished back length from base of neck**

**Jacket A,B** 27¾ 28 28¼ 28½ 28¾ 29 29¼ 29½ 29¾ 30 Ins.

\*with nap \*\*without nap

Moins Facile

**VESTES POUR JEUNES FEMMES**

**Tissus Conseillés:** Crêpe, Denim, Flanelle, Sortes de toile de lin, Satin de coton, Sortes de laine. **Contraste B** aussi en: Simili cuir et daim, Satin. **Doublure:** Mélanges de polyester, Rayonne, Soie. **Entoilage:** Thermocollant léger.

**Mercerie:** A,B: 3 boutons de 2.2cm, 4 boutons de 1.5cm, 1 paire d'épaulettes, un morceau de molleton de polyester de 10cm x 15cm pour les soutiens de manches.

| Tailles    | 8  | 10 | 12 | 14 | 16 | 18 | 20 | 22 | 24 | 26 |
|------------|----|----|----|----|----|----|----|----|----|----|
| Françaises | 36 | 38 | 40 | 42 | 44 | 46 | 48 | 50 | 52 | 54 |
| Européen   | 34 | 36 | 38 | 40 | 42 | 44 | 46 | 48 | 50 | 52 |

**MESURES DU CORPS:** Choisissez la taille du patron basée sur les mesures du corps

|  |    |      |      |    |      |     |     |     |      |      |    |
|--|----|------|------|----|------|-----|-----|-----|------|------|----|
| Poitrine                               | 80 | 83   | 87   | 92 | 97   | 102 | 107 | 112 | 117  | 122  | cm |
| Taille                                 | 61 | 64   | 67   | 71 | 76   | 81  | 87  | 94  | 99   | 106  | "  |
| Hanches (23cm au-dessous de la taille) | 85 | 88   | 92   | 97 | 102  | 107 | 112 | 117 | 122  | 127  | cm |
| Dos du cou à la taille                 | 40 | 40.5 | 41.5 | 42 | 42.5 | 43  | 44  | 44  | 44.5 | 44.5 | "  |

**Veste A** 115cm\* 2.5 2.5 2.5 2.5 2.6 3.0 3.1 3.1 3.1 3.1 m

150cm\* 1.8 1.9 1.9 1.9 1.9 2.2 2.2 2.3 2.3 2.3 "

**Doublure A** 115cm\*\* 1.9 1.9 1.9 1.9 1.9 1.9 1.9 1.9 1.9 2.1 "

**Entoilage A** 51cm 3.2 3.3 3.3 3.3 3.3 3.4 3.4 3.4 3.5 3.5 "

**Veste B** 115cm\* 1.9 1.9 1.9 1.9 2.1 2.5 2.5 2.5 2.5 2.5 m

150cm\* 1.6 1.6 1.6 1.6 1.6 1.6 1.9 1.9 1.9 1.9 "

**Contraste B (Col supérieur, Dessous de col, Parementures du devant):** 115, 150cm\*

0.9 0.9 0.9 0.9 0.9 0.9 0.9 0.9 1.0 1.0 m

**Doublure B** 115cm\*\* 1.8 1.8 1.8 1.8 1.8 1.8 1.8 1.8 1.9 1.9 "

**Entoilage B** 51cm 3.2 3.2 3.3 3.3 3.3 3.4 3.4 3.4 3.5 3.5 "

**MESURES DES VÊTEMENTS FINI (Motif et aisance de port compris)**

**A,B Poitrine** 97 99 103 108 113 118 123 128 133 138 cm

**A,B Taille** 94 97 100 105 110 116 121 126 131 136 "

**A,B Hanches** 105 108 111 117 122 127 132 137 142 147 "

**Largeur à l'ourlet**

**Veste A,B** 109 112 116 121 126 131 136 141 146 151 cm

**Longueur finie – dos, votre nuque à l'ourlet**

**Veste A,B** 70 71 72 72 73 74 74 75 76 76 cm

\*avec sens \*\*sans sens



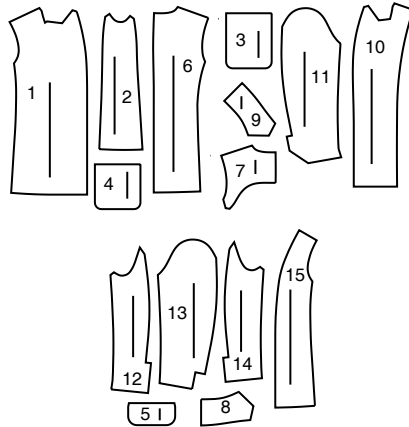
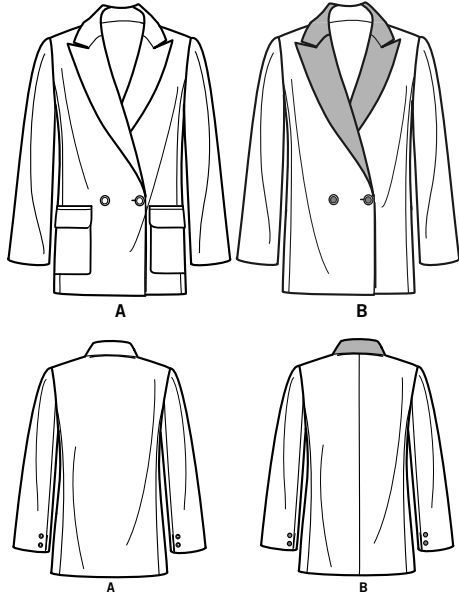
A



B

# Simplicity®

Thank you for purchasing this Simplicity pattern. We made every effort to provide you with a high quality product.



- 1 Front-A,B
- 2 Side Front and Side Back-A,B
- 3 Pocket-A
- 4 Pocket Lining-A
- 5 Flap-A
- 6 Back-A,B
- 7 Back Interfacing-A,B
- 8 Upper Collar-A,B
- 9 Under Collar-A,B
- 10 Front Facing-A,B
- 11 Upper Sleeve-A,B
- 12 Under Sleeve-A,B
- 13 Upper Sleeve Lining-A,B
- 14 Under Sleeve Lining-A,B
- 15 Front Lining-A,B

## General Directions

### The Pattern

- GRAIN LINE** Place on straight grain of fabric parallel to selvage
- PLACE SOLID LINE** on fold of fabric.
- CENTER FRONT OR BACK** of garment.
- NOTCHES**
- DOTS**
- CUTTING LINE**
- LENGTHEN OR SHORTEN LINES**

SEAM ALLOWANCE: 5/8" (1.5cm) unless otherwise stated is included but not printed on MULTI-SIZE PATTERNS. Mark your size with colored felt tip pen. See chart on tissue for how to use MULTI-SIZE PATTERNS.

**ADJUST IF NEEDED**  
Make adjustments before placing pattern on fabric.

**TO LENGTHEN:** Cut pattern between lengthen or shorten lines. Spread pattern evenly, the amount needed and tape to paper.

**TO SHORTEN:** At lengthen or shorten lines, make an even pleat taking up amount needed. Tape in place.

When lengthen or shorten lines are not given, make adjustments at lower edge of pattern.

### Cutting/Marking

**BEFORE CUTTING:**  
PRESS pattern pieces with a warm dry iron. PRE-SHRINK fabric by pre-washing washables or steam-pressing non-washables.

CIRCLE your cutting layout.

PIN pattern to fabric as shown in Cutting Layouts.

- FOR DOUBLE THICKNESS: Fold fabric with RIGHT sides together.
- FOR SINGLE THICKNESS: Place fabric RIGHT side up.
- FOR PILE, SHADED OR ONE WAY DESIGN FABRICS: Use "with nap" layouts

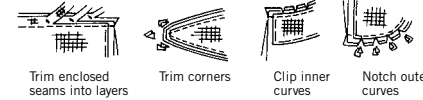
**AFTER CUTTING:**  
Transfer markings to WRONG side of fabric before removing pattern. Use pin and chalk method or dressmaker's tracing paper and wheel.

**To Quick Mark:**

- Snip edge of fabric to mark notches, ends of fold lines and center lines.
- Pin mark dots.

### Sewing

- SEW garment following Sewing Directions.
- PIN or machine-baste seams matching notches.
- STITCH 5/8" (1.5 cm) seams unless otherwise stated.
- PRESS seams open unless otherwise indicated clipping when necessary so seams will lie flat.
- TRIM seams to reduce bulk, as shown below.



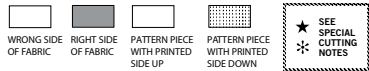
### SPECIAL CUTTING NOTES

★ If layout shows a piece extending past fold, cut out all pieces except piece that extends.

✳ Mark small arrows along both selvages indicating direction of nap or design. Fold fabric crosswise with RIGHT sides together, and cut along fold (a).

Turn one fabric layer around so arrows on both layers go in the same direction. Place RIGHT sides together (b).

## Cutting Layouts

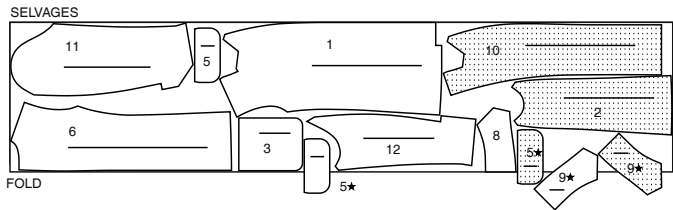


POSITION OF PATTERN PIECES MAY VARY SLIGHTLY ACCORDING TO YOUR PATTERN SIZE

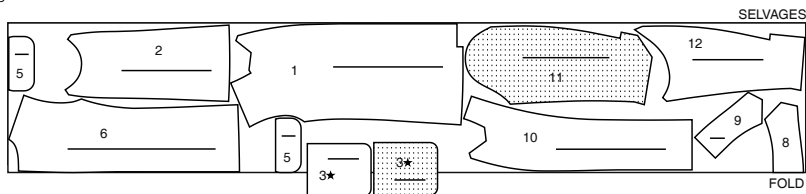
### JACKET A

USE PIECES 1 2 3 5 6 8 9 10 11 12

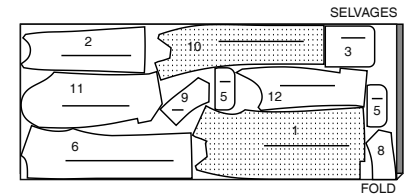
45" (115CM) WITH NAP SIZES 8 10 12 14 16



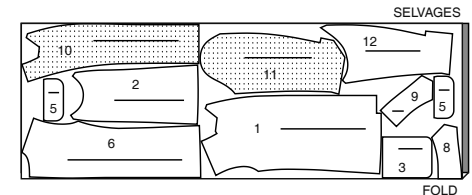
45" (115CM) WITH NAP SIZES 18 20 22 24 26



60" (150CM) WITH NAP SIZES 8 10 12 14 16



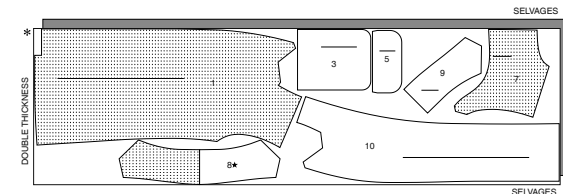
60" (150CM) WITH NAP SIZES 18 20 22 24 26



### INTERFACING A

USE PIECES 1 3 5 7 8 9 10

20" (51CM) ALL SIZES



CUTTING LAYOUTS CONTINUED ON PAGE 2

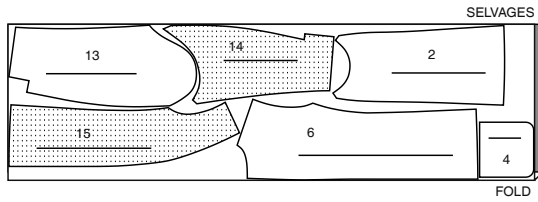
# S9825

2 of 4

## LINING A

USE PIECES 2 4 6 13  
14 15

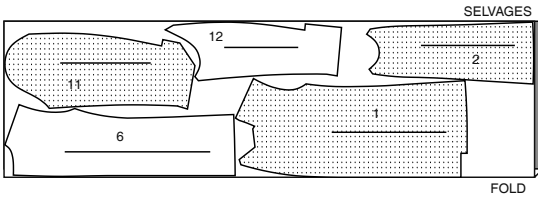
45" (115CM)  
WITHOUT NAP



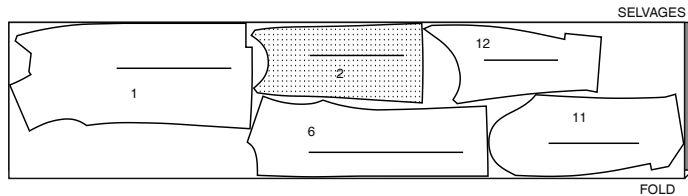
## JACKET B

USE PIECES 1 2 6 11 12

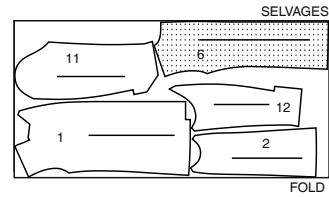
45" (115CM)  
WITH NAP  
SIZES 8 10 12 14 16



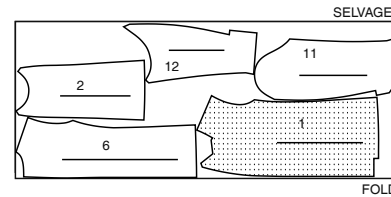
45" (115CM)  
WITH NAP  
SIZES 18 20 22 24 26



60" (150CM)  
WITH NAP  
SIZES 8-10-12-14-16-18



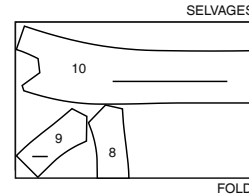
60" (150CM)  
WITH NAP  
SIZES 20-22-24-26



## CONTRAST: LAPEL

USE PIECES 8 9 10

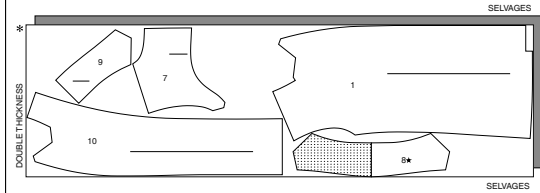
45" TO 60" (115CM TO 150CM)  
WITH NAP



## INTERFACING B

USE PIECES 1 7 8 9 10

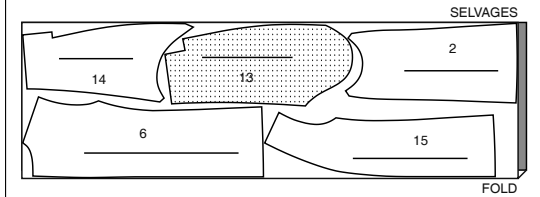
20" (51CM)  
ALL SIZES



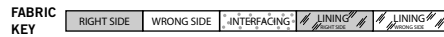
## LINING B

USE PIECES 2 6 13 14 15

45" (115CM)  
WITHOUT NAP



## Sewing Directions



Read **General Directions** on page 1 before you begin.

Sewing methods in **BOLD TYPE** have Sewing Tutorial Video available. Scan QR CODE to watch videos:

**CATCH STITCH** – see Hand Stitching: “hand sewing a catch stitch” video.

**EASE/GATHER** – see Gathering: “sewing two row gathers” video.

**EDGESTITCH** – see Machine Stitches: “how to sew an edgestitch” video.

**SLEEVE** – see Armholes/Sleeves: “sewing a set in sleeve” video.

**SLIP STITCH** – see Hand Stitching: “how to slip stitch” video.

**STAYSTITCH** – see Machine Stitches: “how to do stay stitching” video.

**TACK** – see Hand Stitching: “how to tack” video.

**TOPSTITCH** – see Machine Stitches: “how to topstitch” video.

**TRIM SEAM** – see Seams: “how to trim, clip and layer seams” video.

**UNDERSTITCH** – see Machine Stitches: “how to understitch” video.

### SEWING TUTORIALS



Build your skills viewing short, easy-to-follow videos at [simplicity.com/sewingtutorials](http://simplicity.com/sewingtutorials)

## GLOSSARY

Sewing terms appearing in **BOLD ITALIC TYPE** in Sewing Instructions are explained below.

**INTERFACING** – Pin interfacing to wrong side of fabric. Fuse interfacing in place following manufacturer’s directions.

**PATTERN PIECES WILL BE IDENTIFIED BY NUMBERS THE FIRST TIME THEY ARE USED.**

**STITCH 5/8" (1.5CM) SEAMS WITH RIGHT SIDES TOGETHER UNLESS OTHERWISE STATED.**

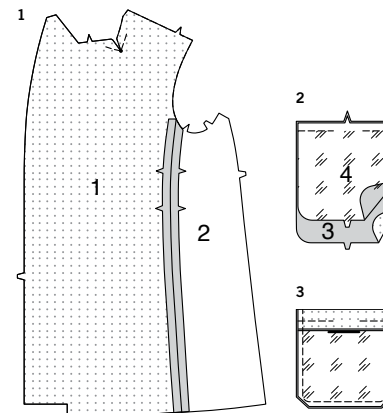
## JACKET A, B

**NOTE:** View A will be shown in illustrations unless noted.

1. Apply **INTERFACING** to front (1) sections. To **REINFORCE** small dot at inner corner of front, stitch along seam line for about 1" (2.5cm) each side of small dot, stitching through small dot. Clip front to small dot at inner corner, being careful not to clip through stitching. With **RIGHT** sides together, pin front to side front and side back (2), matching notches. Stitch.

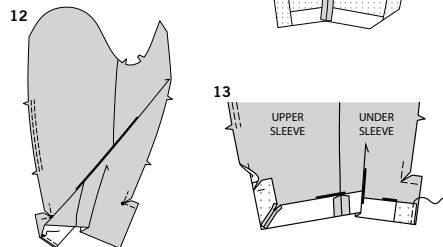
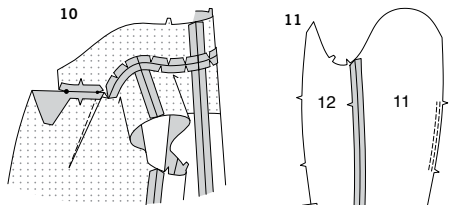
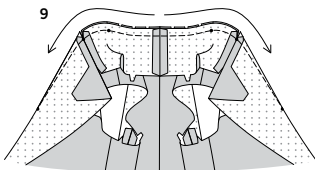
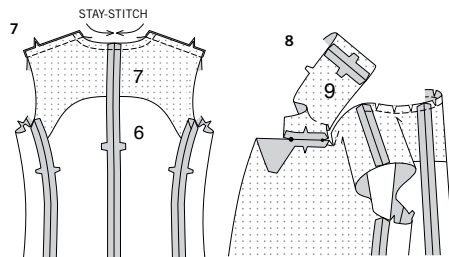
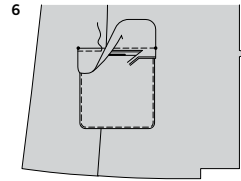
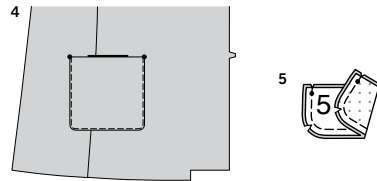
### POCKET A

2. Apply **INTERFACING** to pocket (3). Stitch pocket lining (4) to pocket along upper edge in 5/8" (1.5cm) seam, leaving an opening to turn, as shown.
3. Press seam toward lining. With **RIGHT** sides together, fold upper edge of pocket along fold line. Stitch side and lower edge. **TRIM SEAM** and corners.



S9825

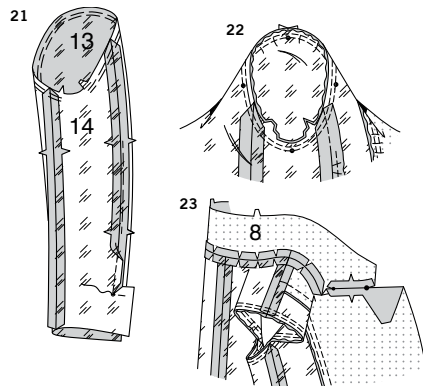
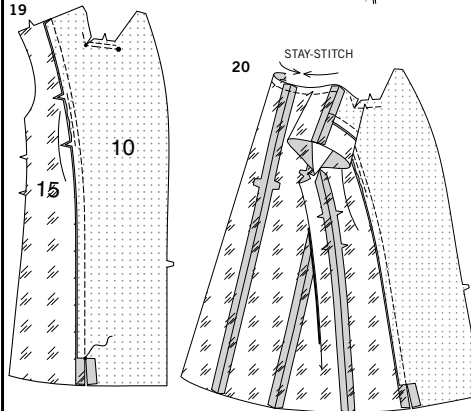
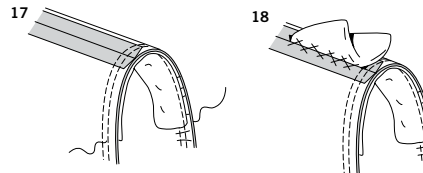
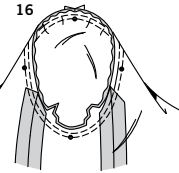
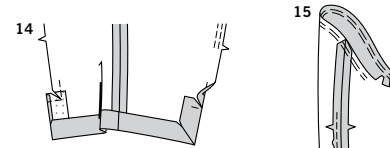
3 of 4



4. Turn pocket; press. **SLIP STITCH** opening edges together. On **OUTSIDE**, pin pocket to front, placing upper corners at large dots. **EDGESTITCH** close to side and lower edges.
5. Apply **INTERFACING** to two flap (5) sections. With **RIGHT** sides together, stitch facing to flap, leaving edge with small dots open. **TRIM SEAM**; clip curves.
6. Turn flap; press. Machine-baste 5/8" (1.5cm) from raw edge. On **OUTSIDE**, pin flap to front, placing basting along flap line, matching small dots, as shown. Stitch along basting. Trim close to stitching. Turn flap down; press. **TOPSTITCH** upper edge.

#### CONTINUE AS FOLLOWS FOR BOTH VIEWS

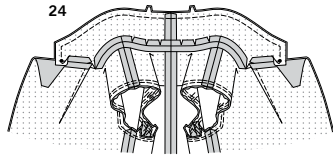
7. Apply **INTERFACING**, back interfacing (7) to back (6). **STAYSTITCH** back neck edge. With **RIGHT** sides together, pin back sections to side front and back sections, matching notches. Stitch.  
Stitch center back seam.  
Stitch front to back at shoulder seams.
8. Apply **INTERFACING** to under collar (9) sections. Stitch center back seam of under collar sections. With **RIGHT** sides together, pin front edge of under collar to jacket, matching small dots, large dots, and notches. Stitch between small and large dots. Press seam open.  
Do **NOT** trim this seam now. For best results, this seam will be trimmed later.  
Clip back neck edge of jacket to stay-stitching along curves.
9. To stitch remaining neck edge and make dart in front, on **INSIDE**, with **RIGHT** sides together bring stitching lines together, matching centers back and small dots, placing inner small dot at shoulder seam. Stitch each side from center back to point of dart along stitching lines in direction of arrows.
10. Trim neck seam between the darts; clip curves. Press seam open, pressing dart away from center.
11. Cut a 1-1/2" (3.8cm) wide strip of fusible interfacing from a remnant. Apply to extensions on upper sleeve (11) and under sleeve (12). If you prefer, apply an additional piece 2" (5cm) wide, 1-1/2" (3.8cm) above lower edge of upper and under sleeve sections, making sure interfacing sections do not overlap. Pin upper sleeve to under sleeve at front edge. Stitch front seam. **EASE** back edge of upper sleeve between notches.
12. To reinforce large dots on upper sleeve extension and under sleeve extension, stitch along seam line 1/2" (1.3cm) on each side of dot, pivoting with needle in fabric at dots. Clip to reinforced dots at inner corners, being careful not to clip through stitching. With **RIGHT** sides together, fold lower corners of upper sleeve, matching small dots. Stitch in a 1/4" (6mm) seam from fold to small dot, back-stitching at dot to reinforce the seam. Press seam open.
13. Turn hem allowance to **OUTSIDE**. Stitch hem extension on under sleeve in a 1/4" (6mm) seam from lower edge up 1" (2.5cm), back-stitching to reinforce.



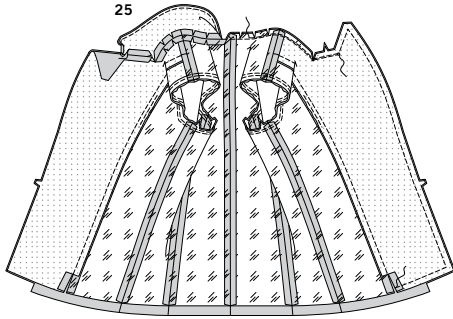
14. Turn corners to **INSIDE**, pressing up hem and extension on upper sleeve to **INSIDE** along fold line, forming facing. Press under 1/4" (6mm) on remaining side edge of under sleeve.
15. With **RIGHT** sides together, pin upper sleeve to under sleeve at back edge, matching large dots, pulling up ease stitches to fit. Stitch from armhole edge to large dot, back-stitching at dot to reinforce the seam. **EASE** upper edge of sleeve between the notches.
16. Set in the **SLEEVE**. Match markings. Pull up ease. Baste. Stitch again 1/4" (6mm) from first stitching.
17. Cut two remnants of polyester fleece 2" (5cm) x 6" (15cm) for sleeve headings. Pin heading to armhole on the **INSIDE** of sleeve, placing the center of heading at shoulder seam, having raw edges even.  
Stitch 1/2" (1.3cm) from jacket side (not the sleeve side).
18. Pin shoulder pad to **INSIDE** of jacket with largest layer of pad against the jacket. The shoulder line of the pad should match the shoulder seam of the coat and the straightest edge of the pad should extend 1/2" (1.3cm) beyond the armhole seam line.  
Try on jacket to check pad placement. Adjust to fit until it looks right and feels comfortable. On **INSIDE**, **CATCH STITCH** each pad to shoulder seam line.
19. Apply **INTERFACING** to front facing (10). Reinforce small dot at inner corner and clip to small dot same as for front. **EASE** front edge of lapel front from small dot to notch and between the small and large dot.  
With **RIGHT** sides together, pin front facing to front lining (15), matching small dots and notches. Stitch seam above small dot; back stitch to reinforce seam. Clip only the facing seam allowance at end of stitching, as shown. Press seam toward lining, pressing under 5/8" (1.5cm) on inner edge of facing below clip, as shown.
20. Cut 1" (2.5cm) from lower edge of back (6) and side front and side back (2) lining sections. Stitch center back edges of lining. **STAYSTITCH** neck edge of back. Stitch side front and back lining sections to back and front lining same as for jacket. Stitch front to back at shoulder edges.
21. To reinforce inner small dot at extension on upper sleeve lining (13) and inner large dot at under sleeve lining (14) extension, stitch along seam line 1/2" (1.3cm) on each side of dot, pivoting with needle in fabric at dots. Clip to reinforced dots at corner, being careful not to clip through stitching. Pin upper sleeve lining to under sleeve lining at front edge. Stitch front seam. **EASE** back edge of upper sleeve between notches. With **RIGHT** sides together, pin upper sleeve to under sleeve at back edge, matching large dots, pulling up ease stitches to fit. Stitch from armhole edge to large dot, back-stitching at dot to reinforce the seam. **EASE** upper edge of sleeve between the notches.
22. Set in the **SLEEVE** lining in same manner as sleeve.
23. Apply **INTERFACING** to upper collar (8).  
Clip neck edge of back lining to stay-stitching along curves. With **RIGHT** sides together, pin upper collar to neck edge of front facing and lining, matching centers, small and large dots, placing inner small dots at shoulder seams. Stitch between large dots, pivoting with needle in fabric at inner corners. Trim back neck seam between shoulder seams; clip curves. Press seams open.

S9825

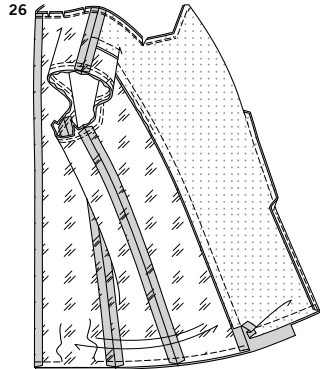
4 of 4



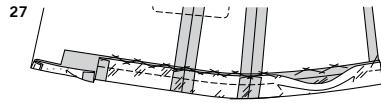
**24.** With RIGHT sides together, pin upper collar to under collar, matching centers, small and large dots. Turn neck seam allowances down. Hand-baste outer edges of upper and under collar together between large dots, working basting stitches from center back to large dots, easing upper collar to fit. Stitch as basted from center back to large dot, overlapping a few stitches at center back. Anchor thread ends securely at large dots. **TRIM SEAM.**



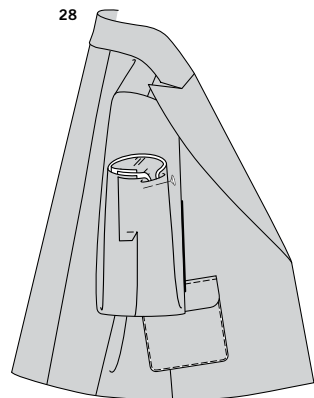
**25.** Turn collar to OUTSIDE between lining and jacket, turning up neck seam allowance. Turn up lapel and lapel facing. Pin front facing to jacket, matching small and large dots. Stitch from large dot to inner edge of facing on lower edge, easing front and lapel facing to fit, being careful not to catch in collar at large dot; back-stitch at end to reinforce seam. **TRIM SEAM.** Stitch seam allowances of facing and lining to jacket together at neck edge between the large dots. **TRIM SEAM.**



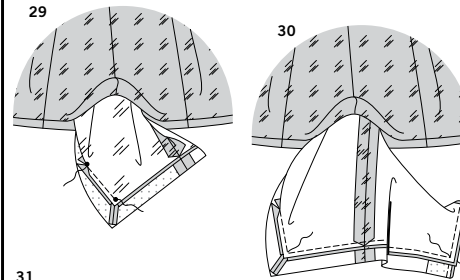
**26.** UNDERSTITCH lower front edge of facing below buttonhole marking, and underside of lapel, for 9" (23cm) beginning at upper edge. With RIGHT sides together, pin lower edges of jacket and lining together, matching centers and seams. Stitch in 1/2" (1.3cm) seam, leaving an opening for turning.



**27.** With the WRONG side of coat facing you, turn up hem on lower edge of coat. **CATCH STITCH** coat hem in place, being careful not to catch in opening edge of lining in back.

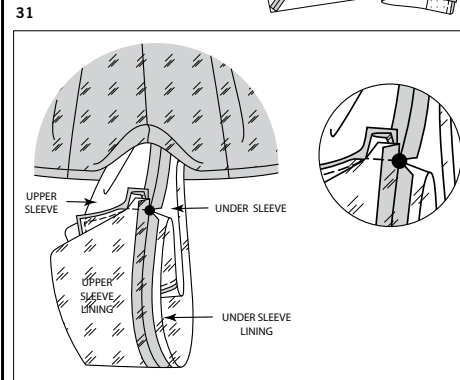


**28.** Turn jacket RIGHT side out through opening in lining; press, pressing collar and lapel along roll line. Slip sleeve in place. To make it easier to match seams correctly, turn sleeve edges of jacket and lining toward each other, as shown, and anchor the turned edges with a pin.

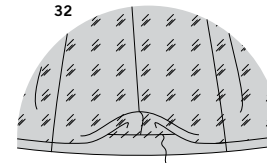


**29.** Pull sleeve through opening in lower edge of jacket, having WRONG sides out, separating jacket sleeve from lining sleeve. With RIGHT sides together, pin upper sleeve extension to lining, matching small dots. Stitch between the small dots in a 1/4" (6mm) seam.

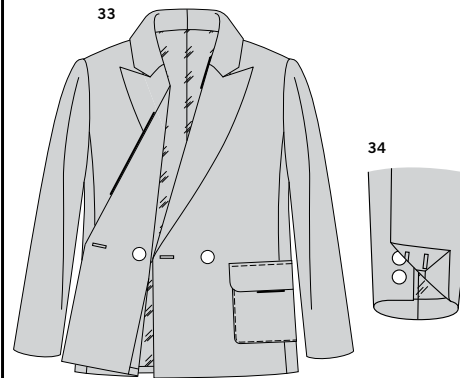
**30.** Open out hem seam on under sleeve extension of jacket. Pin sleeve lining to jacket at lower edge with raw edges even. Stitch lower edge of sleeve and sleeve lining edges together and remaining under sleeve extension edge in a 1/4" (6mm) seam, breaking stitching at corner.



**31.** Bring remaining extension edges together, matching large dots. Stitch across extensions in a 5/8" (1.5cm) seam through all thicknesses. Back-stitching at dot to reinforce the seam.



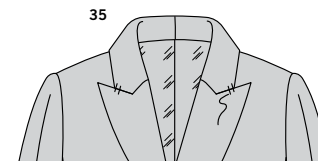
**32.** Turn sleeve and lining back to INSIDE; press, pressing up hem allowance. (If you prefer, slip hand through opening in lower edges of jacket. Tack shoulder and armhole seams of jacket and lining together loosely.) Press under 1/2" (1.3cm) on opening edge of lining. Slip-stitch pressed edge of lining 1" (2.5cm) above lower edge of coat. Allow coat and sleeve lining to drop. Press.



**33.** On OUTSIDE, make buttonholes in both front sections at markings.

On RIGHT front section, sew a 7/8" (2.2cm) button on both INSIDE and OUTSIDE at marking across from buttonhole. On OUTSIDE of LEFT front section, sew a 7/8" (2.2cm) button to remaining marking across from LEFT buttonhole.

**34.** Make buttonholes in upper sleeve at markings. Sew 5/8" (1.5cm) buttons at small dots on under sleeve at markings.



**35.** Pin upper edge of lapel to lower edge of collar. **TACK** together where finished edges meet, invisibly.



# Congrats!

You've completed your sewing adventure

---

**SHARE  
YOUR** LOOK



Post your pattern and tag us  
**@simplicity\_creative\_group** and **#simplicitypatterns**  
for a chance to be featured on our social media.

Look for more PDF patterns at **simplicity.com**

Have a question or need help with your sewing project call us at  
1-888-588-2700



Simplicity ©2023 a division of IG Design Group Americas Inc. • Atlanta, GA 30342 USA [www.thedesigngroup.com](http://www.thedesigngroup.com) • All Rights Reserved. [www.simplicity.com](http://www.simplicity.com) • Made in the U.S.A. Fabriqué aux États-Unis.

To be used for individual private home use only and not for commercial or manufacturing purposes. • A usage privé seulement et non à des fins commerciales ou de production en série. • Para uso privado solamente, no se puede utilizar con propósitos de comercialización o de producción en serie.