

S9823

Simplicity

easy-to-sew



A



B



C



Easy

MISSES' PANTS

Suggested Fabrics: Denim, Lightweight Wools, Linen, Poplin, Rayon Blends, Sateen.

Interfacing: Lightweight Fusible.

Notions: A,B,C: 7" (18cm) zipper (adjust to fit), one 5/8" (1.5cm) button.

Sizes	6	8	10	12	14	16	18	20	22	24
European	32	34	36	38	40	42	44	46	48	50

BODY MEASUREMENTS: Select pattern size based on body measurements

Bust	30½	31½	32½	34	36	38	40	42	44	46	Ins.
Waist	23	24	25	26½	28	30	32	34	37	39	"
Hip-9" below waist	32½	33½	34½	36	38	40	42	44	46	48	"
Back-neck to waist	15½	15¾	16	16¼	16½	16¾	17	17¼	17½	17¾	"

Interfacing A,B,C - 20", ¾ yd.

Pants A,B (sits 1" below waist)											
45**	2½	2½	2½	2½	3	3	3	3	3	3	Yds.
60**	2½	2½	2½	2½	2½	2½	2½	2½	2½	2½	"

Pants C (sits 1" below waist)											
45**	2½	2½	2½	2½	2¾	2¾	2¾	2¾	2¾	2¾	Yds.
60**	2½	2½	2½	2½	2½	2½	2½	2½	2½	2½	"

FINISHED GARMENT MEASUREMENTS (Includes Design and Wearing Ease)

A,B,C Hip	39½	40½	41½	43	45	47	49	51	53	55	Ins.
Width, each leg											
Pants A,B,C	21½	22¼	23	24	25¼	26½	27¾	29	30¼	31½	Ins.
Finished side length from waist											
Pants A,B	40½	40¾	41	41¼	41½	41¾	42	42¼	42½	42¾	Ins.
Pants C	35½	35¾	36	36¼	36½	36¾	37	37¼	37½	37¾	"

*with nap **without nap

Facile

PANTALONS POUR JEUNES FEMMES

Tissus Conseillés: Denim, Laines légers Toile de lin, Popeline, Mélanges de rayannes, Satin de coton. **Entoilage:** Thermocollant léger.

Mercerie: A,B,C: 1 fermeture à glissière de 18cm (adaptez pour ajuster), 1 bouton de 1.5cm.

Tailles	6	8	10	12	14	16	18	20	22	24
Françaises	34	36	38	40	42	44	46	48	50	52
Européen	32	34	36	38	40	42	44	46	48	50

MESURES DU CORPS: Choisissez la taille du patron basée sur les mesures du corps

Poitrine	78	80	83	87	92	97	102	107	112	117	cm
Taille	58	61	64	67	71	76	81	87	94	99	"
Hanches (23cm au-dessous de la taille)											
	83	85	88	92	97	102	107	112	117	122	cm
Dos du cou à la taille	39.5	40	40.5	41.5	42	42.5	43	44	44	44.5	"

Entoilage A,B,C - 51cm, 0.7m

Pantalon A,B (reste à 2.5cm au-dessous de la taille)											
115cm*	2.6	2.6	2.6	2.6	2.7	2.7	2.7	2.7	2.7	2.7	m
150cm*	2.3	2.3	2.3	2.3	2.3	2.3	2.3	2.3	2.3	2.4	"

Pantalon C (reste à 2.5cm au-dessous de la taille)											
115cm*	2.3	2.3	2.3	2.4	2.5	2.5	2.5	2.5	2.5	2.5	m
150cm*	1.9	1.9	2.1	2.1	2.1	2.1	2.1	2.1	2.1	2.2	"

MESURES DES VÊTEMENTS FINI (Motif et aisance de port compris)

A,B,C Hanches	100	103	105	109	114	119	124	130	135	140	cm
Largeur, chaque jambe											
Pantalon A,B,C	55	57	58	61	64	67	70	74	77	80	cm
Longueur finie - côté, taille à l'ourlet											
Pantalon A,B	103	104	104	105	105	106	107	107	108	109	cm
Pantalon C	90	91	91	92	93	93	94	95	95	96	"

*avec sens **sans sens



A



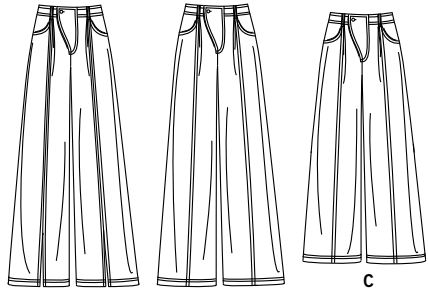
B



C

Simplicity®

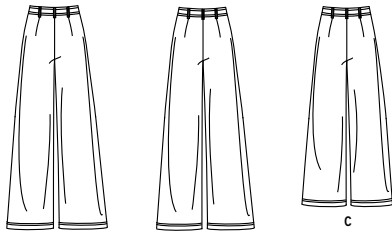
Thank you for purchasing this Simplicity pattern. We made every effort to provide you with a high quality product.



A

B

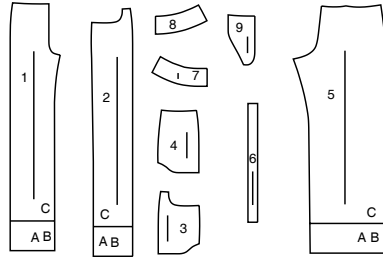
C



A

B

C



- 1 Front-A,B,C
- 2 Side Front-A,B,C
- 3 Pocket Facing-A,B,C
- 4 Side Front and Pocket-A,B,C
- 5 Back-A,B,C
- 6 Carrier-A,B,C
- 7 Front Waistband-A,B,C
- 8 Back Waistband-A,B,C
- 9 Front Tab-A,B,C

General Directions

The Pattern

- SYMBOLS**
- ↔ GRAIN LINE Place on straight grain of fabric parallel to selvage
 - ▬ PLACE SOLID LINE on fold of fabric.
 - - - CENTER FRONT OR BACK of garment.
 - ∇ NOTCHES
 - DOTS
 - CUTTING LINE
 - ▬▬ LENGTHEN OR SHORTEN LINES

SEAM ALLOWANCE: 5/8" (1.5cm) unless otherwise stated is included but not printed on MULTI-SIZE PATTERNS. Mark your size with colored felt tip pen. See chart on tissue for how to use MULTI-SIZE PATTERNS.

ADJUST IF NEEDED
Make adjustments before placing pattern on fabric.

TO LENGTHEN:
Cut pattern between lengthen or shorten lines. Spread pattern evenly, the amount needed and tape to paper.

TO SHORTEN:
At lengthen or shorten lines, make an even pleat taking up amount needed. Tape in place.

When lengthen or shorten lines are not given, make adjustments at lower edge of pattern.

Cutting/Marking

BEFORE CUTTING:
PRESS pattern pieces with a warm dry iron. PRE-SHRINK fabric by pre-washing washables or steam-pressing non-washables.

CIRCLE your cutting layout.
PIN pattern to fabric as shown in Cutting Layouts.

- FOR DOUBLE THICKNESS: Fold fabric with RIGHT sides together.
- FOR SINGLE THICKNESS: Place fabric RIGHT side up.
- FOR PILE, SHADED OR ONE WAY DESIGN FABRICS: Use "with nap" layouts

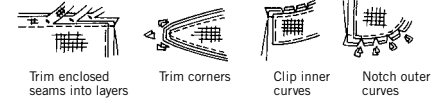
AFTER CUTTING:
Transfer markings to WRONG side of fabric before removing pattern. Use pin and chalk method or dressmaker's tracing paper and wheel.

- To Quick Mark:**
- Snip edge of fabric to mark notches, ends of fold lines and center lines.
 - Pin mark dots.



Sewing

- SEW garment following Sewing Directions.
- PIN or machine-baste seams matching notches.
- STITCH 5/8" (1.5 cm) seams unless otherwise stated.
- PRESS seams open unless otherwise indicated clipping when necessary so seams will lie flat.
- TRIM seams to reduce bulk, as shown below.

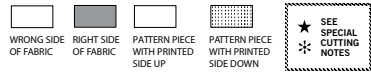


SPECIAL CUTTING NOTES

★ If layout shows a piece extending past fold, cut out all pieces except piece that extends.
Open out fabric to single thickness. Cut extending piece on RIGHT side of fabric in position shown.

✱ Mark small arrows along both selvages indicating direction of nap or design. Fold fabric crosswise with RIGHT sides together, and cut along fold (a).
Turn one fabric layer around so arrows on both layers go in the same direction. Place RIGHT sides together (b).

Cutting Layouts

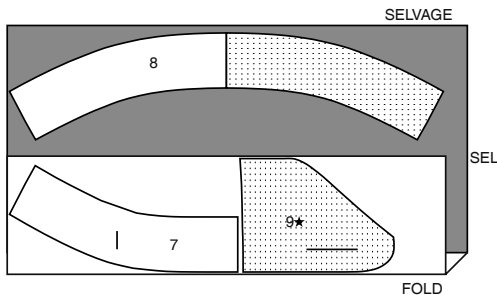


POSITION OF PATTERN PIECES MAY VARY SLIGHTLY ACCORDING TO YOUR PATTERN SIZE

INTERFACING A,B,C

USE PIECES 7 8 9

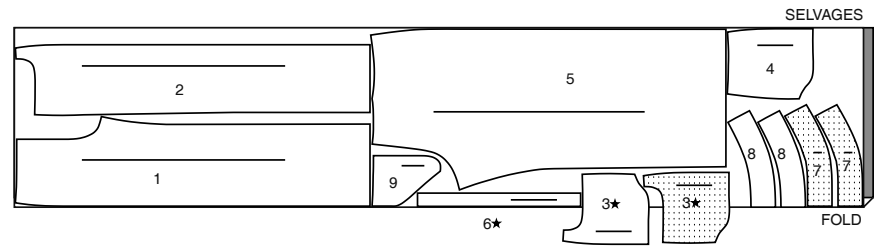
20" (51CM) ALL SIZES



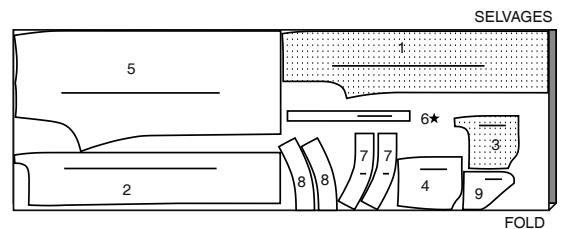
PANTS A,B

USE PIECES 1 2 3 4 5 6 7 8 9

45" (115CM) WITH NAP ALL SIZES



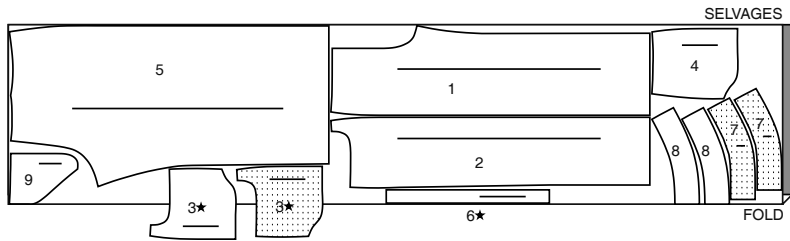
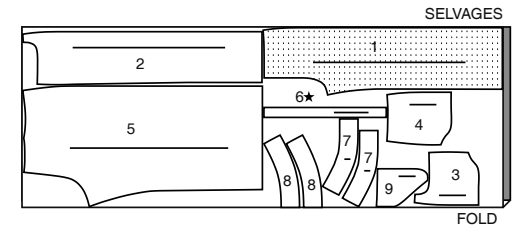
60" (150CM) WITH NAP ALL SIZES



CUTTING LAYOUTS CONTINUED ON PAGE 2

PANTS C

USE PIECES 1 2 3 4 5 6 7 8 9

45" (115CM)
WITH NAP
ALL SIZES60" (150CM)
WITH NAP
ALL SIZES

Sewing Directions

FABRIC KEY

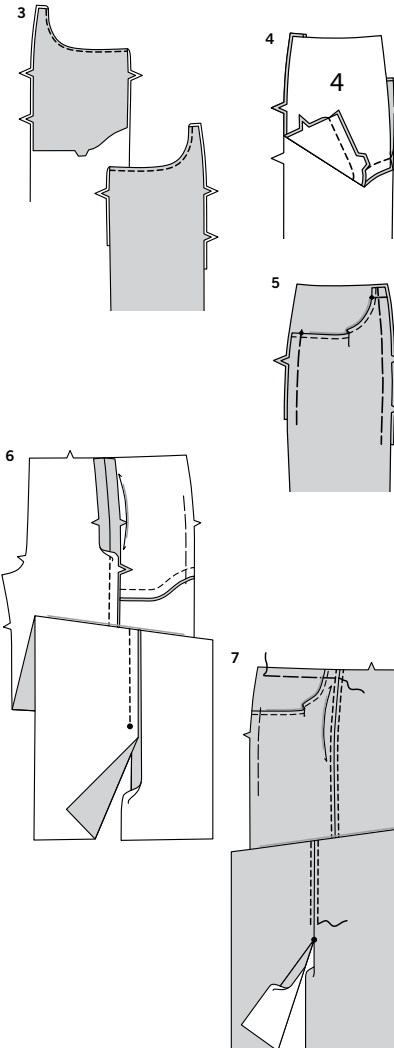
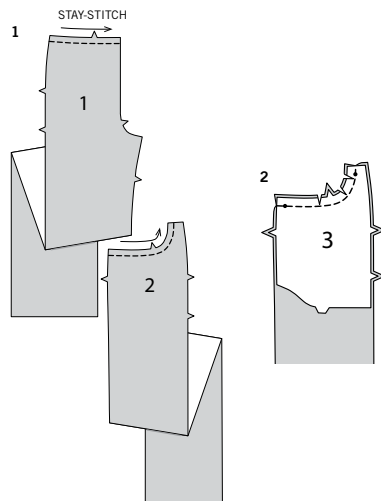
RIGHT SIDE	WRONG SIDE	INTERFACING	LINING	LINING
------------	------------	-------------	--------	--------

Read **General Directions** on page 1 before you begin.Sewing methods in **BOLD TYPE** have Sewing Tutorial Video available. Scan QR CODE to watch videos:**DART** see "sewing flat dart" video.**STAYSTITCH**- see "how to staystitch" video.**REINFORCE**- see Machine Stitches: "how to reinforce" video.**SLIPSTITCH**- see Hand Stitching: "how to slipstitch" video.**STITCH IN THE DITCH**- see Machine Stitches: "how to stitch in the ditch" video.**TOPSTITCH** - see "how to topstitch" video.**UNDERSTITCH**- see Machine Stitches: "how to understitch" video.**PATTERN PIECES WILL BE IDENTIFIED BY NUMBERS THE FIRST TIME THEY ARE USED.****STITCH SEAMS WITH RIGHT SIDES TOGETHER UNLESS OTHERWISE STATED.**

PANTS A, B, C

NOTE: *Pants are worn 1" (2.5cm) below waist.***1. STAY-STITCH** upper edge of front (1) and side front (2) -**2.** Pin pocket facing (3) to side front matching small dots. Stitch curved single notched edge. Trim seam. Clip curves.

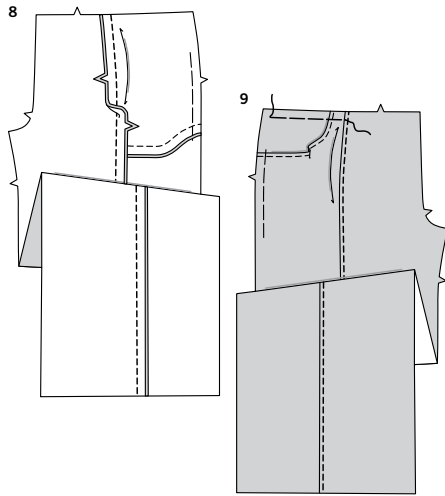
SEWING TUTORIALS

Build your skills viewing short, easy-to-follow videos at [simplicity.com/sewingtutorials](https://www.simplicity.com/sewingtutorials)**3. UNDERSTITCH** pocket facing. Turn to **INSIDE**; press. **TOPSTITCH** finished edge on **OUTSIDE**.**4.** With **RIGHT** sides together and raw edges even, pin side front and pocket (4) to pocket facing. Stitch double notched edge.**5.** On **OUTSIDE**, lap side front over side front and pocket, matching small dots, having raw edges even. Baste side and upper edges together.

FRONT SEAM AND SLIT A

6. Pin inner edges of front and side front together, matching large dots. Stitch seam above large dot, back-stitching at large dot to reinforce seam. Press seam open.**7. TOPSTITCH** front and side front to within 1" (2.5cm) of large dot, as shown. **TIP-** Bring thread ends to **INSIDE** and knot. This will give the appearance of continuous topstitching when finishing slit edges.

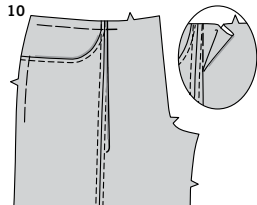
FRONT SEAM B, C



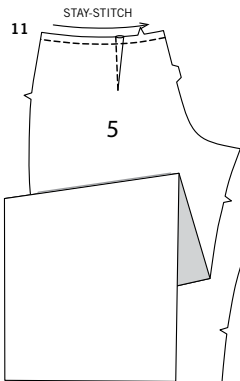
- 8.** Stitch inner edges of front and side front together. Press seam towards front

- 9.** TOPSTITCH front. If you prefer, edge stitch front close to seam.

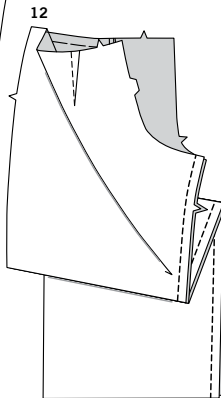
CONTINUE AS FOLLOWS FOR ALL VIEWS



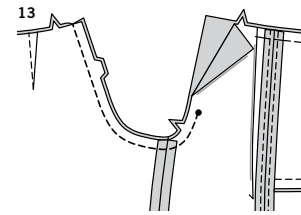
- 10.** To make front pleat, on OUTSIDE, fold along solid lines. Bring folds to broken lines; pin. Baste across raw edge. Press.



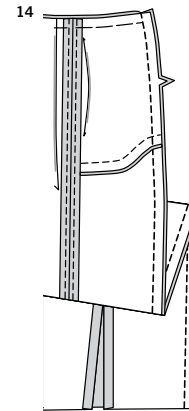
- 11.** STAY-STITCH upper edge of back (5) sections. To make DART, bring broken lines and small dots together. Stitch dart from wide end to point. Press dart flat toward center back.



- 12.** Stitch front to back at inner leg seam.



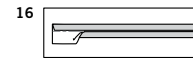
- 13.** Pin center seam, matching large dots, notches, and inner leg seams. Stitch seam as far as large dot on front, back-stitching at large dot to reinforce seam. REINFORCE seam.



- 14.** Stitch front to back at side seams.



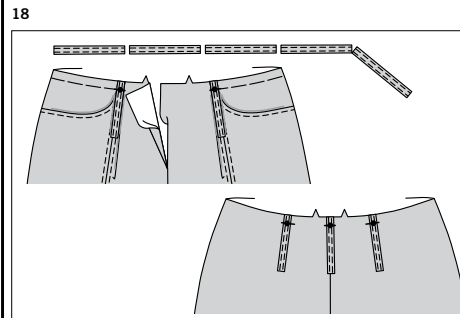
- 15.** Fold carrier (6) in half, lengthwise with WRONG sides together. Press, setting in a crease.



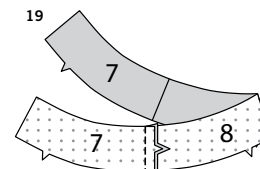
- 16.** Open out long edges of carrier and turn them to WRONG side so that they meet at the crease. Press.



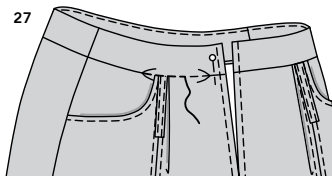
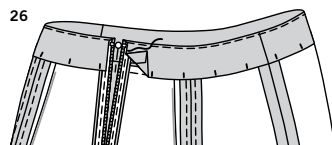
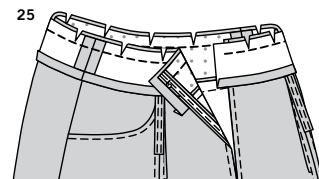
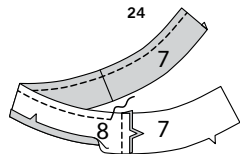
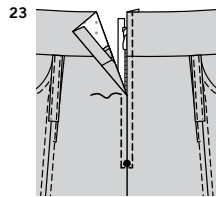
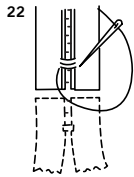
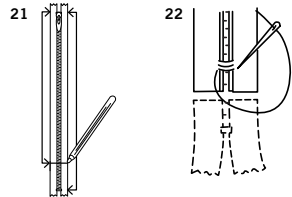
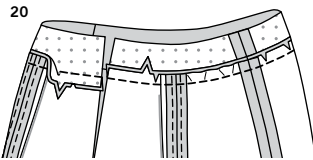
- 17.** Fold carrier in half lengthwise, bringing pressed edges together. Stitch close to both long edges.



- 18.** Cut five carriers, each 4" (10cm) long. On OUTSIDE, baste carriers to upper edge of pants, centering over large dots and having raw edges even.



- 19.** Apply fusible interfacing to WRONG sides of front waistband (7) sections and back waistband (8), following manufacturer's directions. Stitch sides seams of waistband sections. This is the waistband. The remaining sections will be used as waistband facings.



20. With RIGHT sides together, pin waistband to upper edge of pants (over carriers) having raw edges even, matching centers and side seams. Stitch. Trim seam; clip curves where necessary. Press seam toward waistband.

NOTE: Instructions are given for shortening your zipper. If you don't want to shorten your zipper, custom zippers are available for purchase online.

21. It will be necessary to adjust the length of your zipper. Measure front opening from large dot to seam line at upper edge of waistband, less 1/4" (6mm). Close zipper and measure from tab down along teeth to length needed. Mark new length.

22. With matching buttonhole twist or heavy-duty thread, make several overcast stitches across zipper teeth at marking. Trim away lower end of zipper tape to within 5/8" (1.5cm) of overcast stitches.

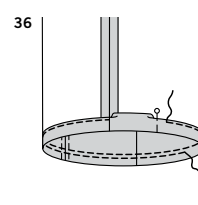
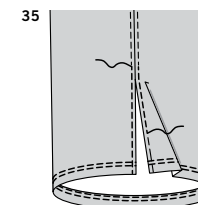
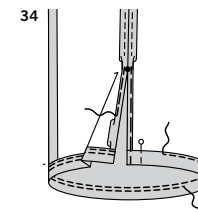
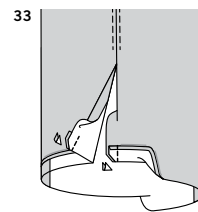
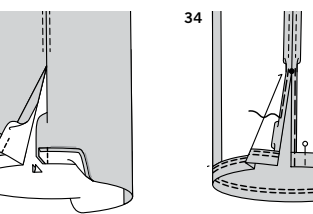
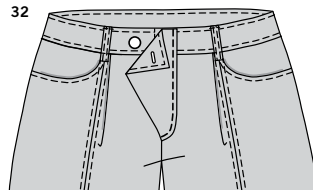
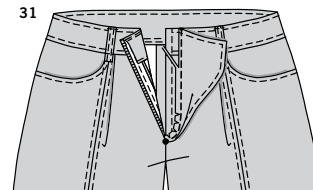
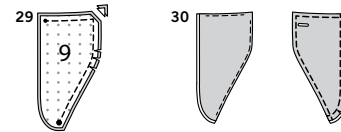
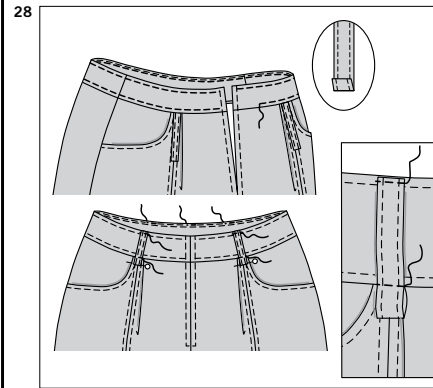
23. Press under 5/8" (1.5cm) on front opening edges. Pin closed zipper under opening edges with tab end 3/4" (2cm) below upper edge, having edges meet at center of zipper. Baste. Stitch 1/4" (6mm) each side of center and across end, using an adjustable zipper foot.

24. STAY-STITCH upper edge of waistband facing sections. Stitch side seams of facings same as for waistband. Press under 1/2" (1.3cm) on notched edge.

25. With RIGHT sides together and raw edges even, pin facing to waistband, matching centers and side seams. (Ends of waistband facing will extend 5/8" (1.5cm.) beyond ends of waistband). Stitch upper edge. Trim seam; clip curves.

26. UNDERSTITCH facing. Turn facing to INSIDE; press, pressing under seam allowance on ends of facing. Pin pressed edge of facing 1/8" (3mm) over seam, placing pins on OUTSIDE.
SLIP-STITCH inner edges of facing over zipper tape, clearing zipper teeth.

27. On OUTSIDE, **STITCH IN THE DITCH** or "groove" of the seam, catching in pressed edge of facing on INSIDE.
TIP: To conceal the stitches in the ditch or groove of seam, try using a zipper foot, spreading the pants and band away from the seam with your fingers.



28. TOPSTITCH upper and lower edges of waistband between zipper stitching. Place a pin across each carrier 1/2" (1.3cm) below waistband seam, as shown. Turn under 3/8" to 1/2" (1cm-1/3cm) on raw edge of carrier and stitch to upper edge of waistband, having edges even. Stitch carrier across waist seam; remove pin.

29. Apply fusible interfacing to one tab (9) section. Pin tab sections together, having raw edges even. Stitch outer edges between small and large dots, leaving long edges with curved ends open, as shown. Back-stitch at each dot to reinforce seam. Trim corners on upper edges. Clip curves at angled edge.

30. UNDERSTITCH tab facing as far as possible (the facing is the section that will be on the UNDERSIDE, facing your pants and body). Turn tab RIGHT side out; press. Machine-stitch a scant 3/8" (1cm) from raw edges, using fine stitches along curves. Clip curves, being careful not to clip through stitching.
TOP-STITCH finished edges. Make buttonhole at marking.

31. With RIGHT sides together, pin raw edges of tab to LEFT pants along placement line, matching large dots and placing small dot at upper edge. Stitch.
REINFORCE seam. Trim seam allowances to 1/8" (3mm).

32. Flip tab towards RIGHT front, Press.
TOPSTITCH attached edge, encasing raw edges. Sew button to RIGHT front at small dot.

33. HEM A - Turn hem to OUTSIDE at slit opening edges, having raw edges even. Press under 1/4" (6mm) on lower edges of pants. Stitch ends. Trim corners.

34. Turn hem to INSIDE; press. Press under 5/8" (1.5cm) on each slit opening edge. To finish, press under a generous 1/4" (6mm) on inner raw edge. Hand-baste 1/4" (6mm) from outer pressed edge, connecting to top-stitching.

35. TOP-STITCH front and side front as basted. Remove basting. Stitch hem close to inner pressed edge. Stitch again 1/4" (6mm) below first stitching.

36. HEM B, C - Press up hem. Press under 1/4" (6mm) on raw edge. Stitch close to inner pressed edge. Stitch again 1/4" (6mm) below first stitching.



Congrats!

You've completed your sewing adventure

**SHARE
YOUR** LOOK



Post your pattern and tag us
@simplicity_creative_group and **#simplicitypatterns**
for a chance to be featured on our social media.

Look for more PDF patterns at **simplicity.com**

Have a question or need help with your sewing project call us at
1-888-588-2700



Simplicity ©2023 a division of IG Design Group Americas Inc. • Atlanta, GA 30342 USA www.thedesigngroup.com • All Rights Reserved. www.simplicity.com • Made in the U.S.A. Fabriqué aux États-Unis.

To be used for individual private home use only and not for commercial or manufacturing purposes. • A usage privé seulement et non à des fins commerciales ou de production en série. • Para uso privado solamente, no se puede utilizar con propósitos de comercialización o de producción en serie.