

S9821

**Simplicity**



Average

**MISSES' BLOUSE WITH COLLAR, SLEEVE AND HEMLINE VARIATIONS**

**Suggested Fabrics:** Cotton Blends, Double Gauze, Shirting Fabrics, Voile. **Interfacing:** Lightweight Fusible.

**Notions:** A,B: Thirteen 5/8" (1.5cm) buttons. C: Eight 5/8" (1.5cm) buttons.

Sizes	6	8	10	12	14	16	18	20	22	24
European	32	34	36	38	40	42	44	46	48	50

**BODY MEASUREMENTS: Select pattern size based on body measurements**

Bust	30½	31½	32½	34	36	38	40	42	44	46	Ins.
Waist	23	24	25	26½	28	30	32	34	37	39	"
Hip-9" below waist	32½	33½	34½	36	38	40	42	44	46	48	"
Back-neck to waist	15½	15¾	16	16¼	16½	16¾	17	17¼	17½	17¾	"

Blouse A	45**	5	5	5	5½	5½	5½	5½	5½	5½	5½	Yds.
	60**	4	4½	4½	4½	4½	4½	4½	4½	4½	4½	"

**Interfacing A** 20" - 1¼ yd.

Blouse B	45**	2	2	2½	2½	2½	2½	2½	2½	2½	2½	Yds.
	60**	1½	1½	1½	1½	1½	1½	1½	1½	1½	1½	"

**Contrast B (Bodice Front, Bodice Side Front, Bodice Back, Bodice Side Back)**

	45**	½	½	½	¾	¾	¾	¾	¾	¾	¾	Yds.
	60**	½	½	½	½	½	½	½	½	½	¾	"

**Interfacing B** 20" - ¾ yd.

Blouse C	45**	4	4	4	4½	4½	4½	4½	4½	4½	4½	Yds.
	60**	3½	3½	3½	3½	3½	3½	3½	3½	3½	3½	"

**Interfacing C** 20" - ¾ yd.

**FINISHED GARMENT MEASUREMENTS (Includes Design and Wearing Ease)**

A,B,C Bust	34½	35½	36½	38	40	42	44	46	48	50	Ins.
A,B,C Waist	27	28	29	30½	3½	34½	3½	38½	40½	42½	"

**Finished back length from base of neck**

Blouse A,B	23½	23¾	24	24½	24½	24½	25	2½	25½	26	Ins.
Blouse C	18½	18¾	19	19¼	19½	19¾	20	20¼	20½	20¾	"

\*with nap \*\*without nap

Moins Facile

**CHEMISIER AVEC VARIATIONS DE COL, DE MANCHES ET D'OURLET POUR JEUNES FEMMES**

**Tissus Conseillés:** Cotonnades, Gaze double, Shirtings, Voile. **Entoilage:** Thermocollant léger.

**Merci:** A,B: 13 boutons de 1.5cm. C: 8 boutons de 1.5cm.

Tailles	6	8	10	12	14	16	18	20	22	24
Françaises	34	36	38	40	42	44	46	48	50	52
Européen	32	34	36	38	40	42	44	46	48	50

**MESURES DU CORPS: Choisissez la taille du patron basée sur les mesures du corps**

Poitrine	78	80	83	87	92	97	102	107	112	117	cm
Taille	58	61	64	67	71	76	81	87	94	99	"
Hanches (23cm au-dessous de la taille)	83	85	88	92	97	102	107	112	117	122	cm

Dos du cou à la taille	39.5	40	40.5	41.5	42	42.5	43	44	44.5	45	"
------------------------	------	----	------	------	----	------	----	----	------	----	---

Chemisier A	115cm*	4.6	4.6	4.6	4.7	4.7	4.8	4.9	4.9	4.9	5.0	m
	150cm*	3.7	3.8	3.8	3.8	3.8	3.8	3.9	3.9	3.9	4.0	"

**Entoilage A** 51cm-1.2m

Chemisier B	115cm*	1.8	1.8	1.8	1.9	1.9	2.1	2.1	2.2	2.2	2.2	m
	150cm*	1.5	1.5	1.5	1.6	1.6	1.6	1.6	1.7	1.7	1.7	"

**Contraste B (Corsage devant, Corsage côté devant, Corsage dos, Corsage côté dos)**

	115cm*	0.5	0.5	0.6	0.7	0.7	0.7	0.7	0.7	0.7	0.7	m
	150cm*	0.5	0.5	0.5	0.5	0.5	0.5	0.5	0.5	0.5	0.7	"

**Entoilage B** 51cm-0.8m

Chemisier C	115cm*	3.7	3.7	3.7	3.7	3.8	3.8	3.8	3.8	3.9	3.9	m
	150cm*	2.9	2.9	2.9	2.9	2.9	3.0	3.0	3.0	3.1	3.1	"

**Entoilage C** 51cm-0.7m

**MESURES DES VÊTEMENTS FINI (Motif et aisance de port compris)**

A,B,C Poitrine	88	90	93	97	102	107	112	117	122	127	cm
A,B,C Taille	69	71	74	77	83	88	93	98	103	108	"

**Longueur finie – dos, votre nuque à l'ourlet**

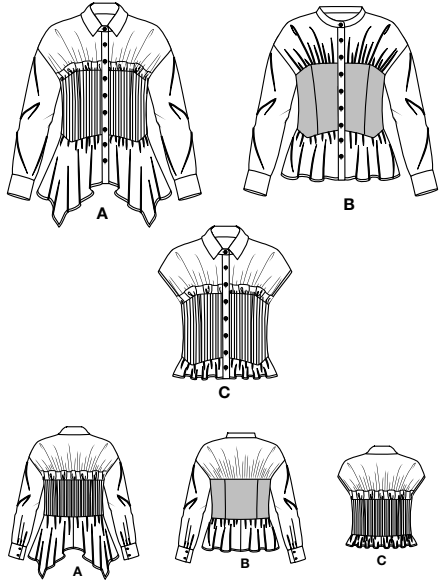
Chemisier A,B	60	60	61	62	62	63	64	64	65	65	cm
Chemisier C	47	48	48	49	50	50	51	51	52	53	"

\*avec sens \*\*sans sens

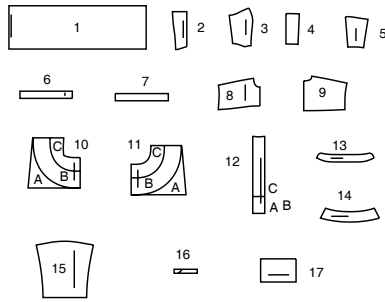


# Simplicity®

Thank you for purchasing this Simplicity pattern. We made every effort to provide you with a high quality product.



17 PIECES



- 1 BLOCK FOR TUCKS - A,C
- 2 BODICE FRONT - A,B,C
- 3 BODICE SIDE FRONT - A,B,C
- 4 BODICE BACK - A,B,C
- 5 BODICE SIDE BACK - A,B,C
- 6 FRONT RUFFLE - A,C
- 7 BACK RUFFLE - A,C
- 8 YOKE FRONT - A,B,C
- 9 YOKE BACK - A,B,C
- 10 LOWER FRONT - A,B,C
- 11 LOWER BACK - A,B,C
- 12 PLACKET - A,B,C
- 13 NECKBAND - A,B,C
- 14 COLLAR - A,C
- 15 SLEEVE - A,B
- 16 CONTINUOUS LAP - A,B
- 17 CUFF - A,B

## General Directions

### The Pattern

- SYMBOLS**
- ↔ GRAIN LINE Place on straight grain of fabric parallel to selvage
- ▬ PLACE SOLID LINE on fold of fabric.
- - - CENTER FRONT OR BACK of garment.
- ∇ NOTCHES
- DOTS
- CUTTING LINE
- ▬▬ LENGTHEN OR SHORTEN LINES

SEAM ALLOWANCE: 5/8" (1.5cm) unless otherwise stated is included but not printed on MULTI-SIZE PATTERNS. Mark your size with colored felt tip pen. See chart on tissue for how to use MULTI-SIZE PATTERNS.

### ADJUST IF NEEDED

Make adjustments before placing pattern on fabric.

**TO LENGTHEN:** Cut pattern between lengthen or shorten lines. Spread pattern evenly, the amount needed and tape to paper.

**TO SHORTEN:** At lengthen or shorten lines, make an even pleat taking up amount needed. Tape in place.

When lengthen or shorten lines are not given, make adjustments at lower edge of pattern.

### Cutting/Marking

#### BEFORE CUTTING:

- PRESS pattern pieces with a warm dry iron. PRE-SHRINK fabric by pre-washing washables or steam-pressing non-washables.
- CIRCLE your cutting layout.
- PIN pattern to fabric as shown in Cutting Layouts.
- FOR DOUBLE THICKNESS: Fold fabric with RIGHT sides together.
- FOR SINGLE THICKNESS: Place fabric RIGHT side up.
- FOR PILE, SHADED OR ONE WAY DESIGN FABRICS: Use "with nap" layouts

#### AFTER CUTTING:

Transfer markings to WRONG side of fabric before removing pattern. Use pin and chalk method or dressmaker's tracing paper and wheel.

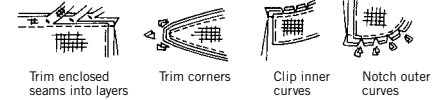
#### To Quick Mark:

- Snip edge of fabric to mark notches, ends of fold lines and center lines.
- Pin mark dots.



### Sewing

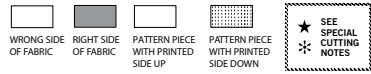
- SEW garment following Sewing Directions.
- PIN or machine-baste seams matching notches.
- STITCH 5/8" (1.5 cm) seams unless otherwise stated.
- PRESS seams open unless otherwise indicated clipping when necessary so seams will lie flat.
- TRIM seams to reduce bulk, as shown below.



### SPECIAL CUTTING NOTES

- ★ If layout shows a piece extending past fold, cut out all pieces except piece that extends.
- ✱ Mark small arrows along both selvages indicating direction of nap or design. Fold fabric crosswise with RIGHT sides together, and cut along fold (a).
- Turn one fabric layer around so arrows on both layers go in the same direction. Place RIGHT sides together (b).

## Cutting Layouts

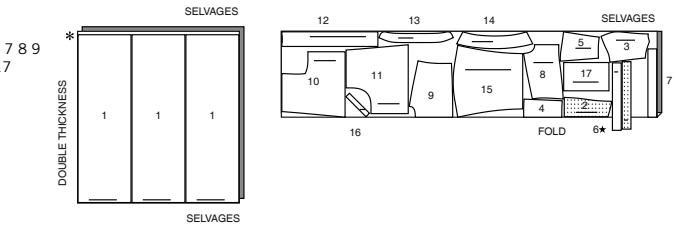


POSITION OF PATTERN PIECES MAY VARY SLIGHTLY ACCORDING TO YOUR PATTERN SIZE

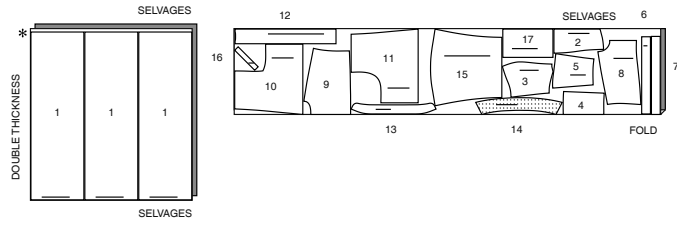
### BLOUSE A

USE PIECES 1 2 3 4 5 6 7 8 9 10 11 12 13 14 15 16 17

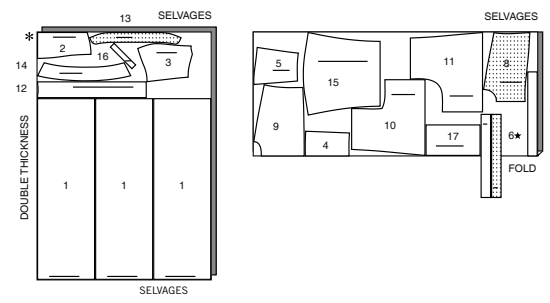
45" (115CM) WITH NAP SIZES 6 8 10 12 14



45" (115CM) WITH NAP SIZES 16 18 20 22 24

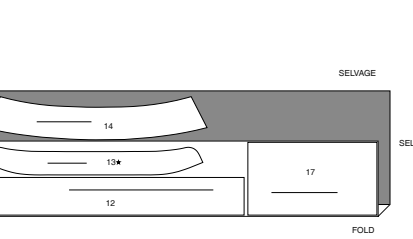


60" (150CM) WITH NAP ALL SIZES



### INTERFACING A

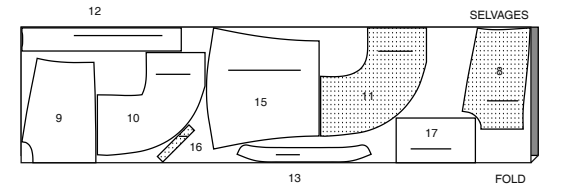
USE PIECES 12 13 14 17



### BLOUSE B

USE PIECES 8 9 10 11 12 13 15 16 17

45" (115CM) WITH NAP ALL SIZES

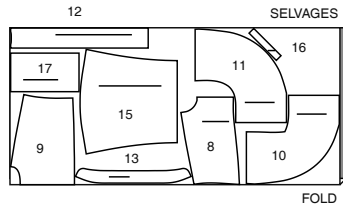


CUTTING LAYOUTS CONTINUED ON PAGE 2

# S9821

2 of 4

60" (150CM)  
WITH NAP  
ALL SIZES

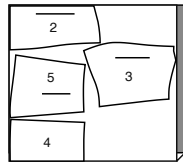


## CONTRAST B

USE PIECES 2 3 4 5

45" (115CM) WITH NAP  
ALL SIZES

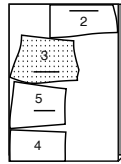
SELVAGES



FOLD

60" (150CM)  
WITH NAP  
ALL SIZES

SELVAGES

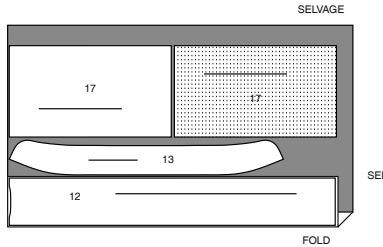


FOLD

## INTERFACING B

USE PIECES 12 13 17

20" (51CM)  
ALL SIZES



SELVAGE

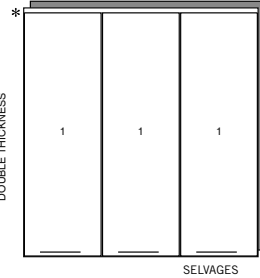
FOLD

## BLOUSE C

USE PIECES 1 2 3 4 5 6 7 8 9 10 11 12 13 14

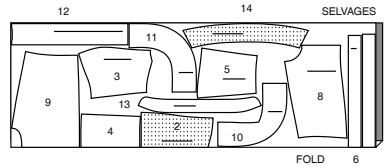
45" (115CM)  
WITH NAP  
ALL SIZES

SELVAGES



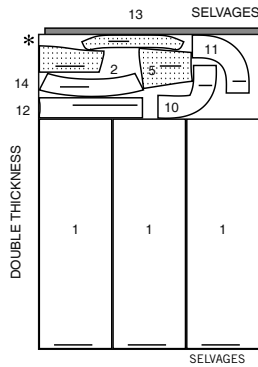
DOUBLE THICKNESS

SELVAGES



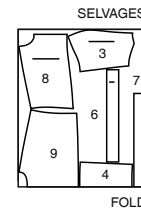
FOLD

60" (150CM)  
WITH NAP  
SIZES 6 8 10 12 14



DOUBLE THICKNESS

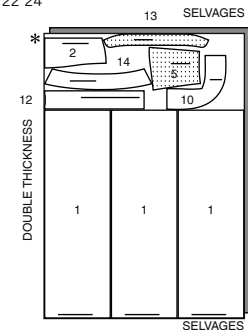
SELVAGES



SELVAGES

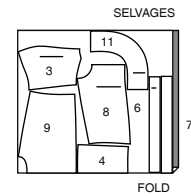
FOLD

60" (150CM)  
WITH NAP  
SIZES 16 18 20 22 24



DOUBLE THICKNESS

SELVAGES

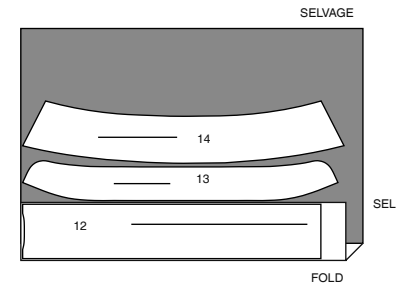


FOLD

## INTERFACING C

USE PIECES 12 13 14

20" (51CM)  
ALL SIZES

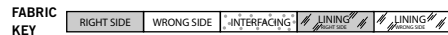


SELVAGE

SEL

FOLD

## Sewing Directions



Read **General Directions** on page 1 before you begin.

Sewing methods in **BOLD TYPE** have Sewing Tutorial Video available. Scan QR CODE to watch videos:

**CONTINUOUS LAP** – see Armholes/Sleeves: “how to sew a sewing a continuous lap” video

**EASE/GATHER** – see Gathering: “sewing two row gathers” video.

**NARROW HEM** – see Hems: “sewing narrow hems” video.

**STAYSTITCH** – see Machine Stitches: “how to do stay stitching” video.

**STITCH IN THE DITCH** – see Machine Stitches: “how to stitch in the ditch” video.

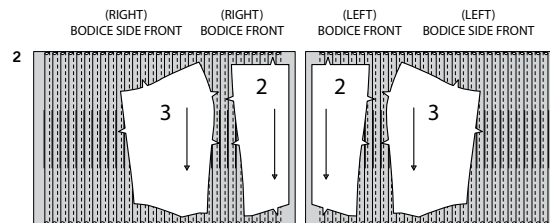
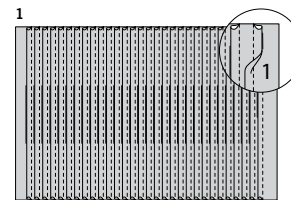
**UNDERSTITCH** – see Machine Stitches: “how to understitch” video.

SEWING TUTORIALS



SCAN ME

Build your skills viewing short, easy-to-follow videos at [simplicity.com/sewingtutorials](http://simplicity.com/sewingtutorials)



## GLOSSARY

Sewing terms appearing in **BOLD TYPE** in Sewing Instructions are explained below.

**INTERFACING** – Pin fusible interfacing to wrong side of fabric. Fuse in place following manufacturer’s directions.

**PATTERN PIECES WILL BE IDENTIFIED BY NUMBERS THE FIRST TIME THEY ARE USED.**

**STITCH 5/8" (1.5CM) SEAMS WITH RIGHT SIDES TOGETHER UNLESS OTHERWISE STATED.**

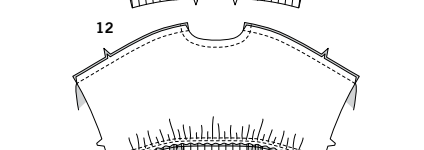
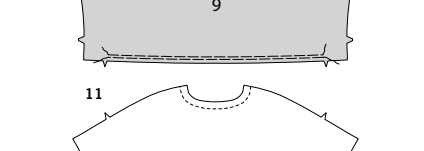
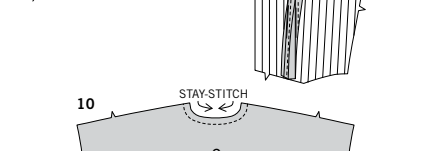
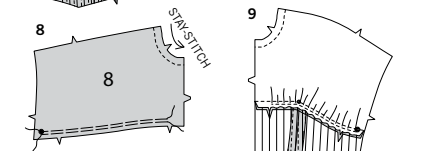
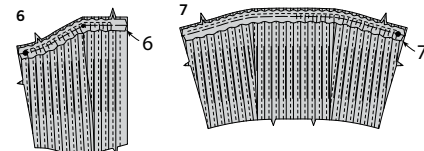
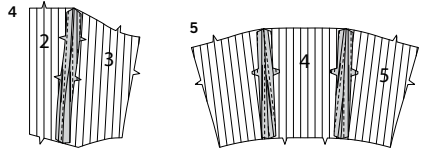
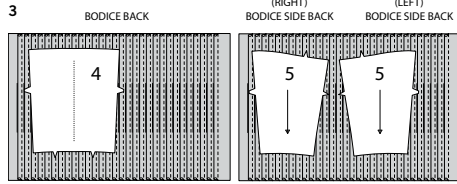
## BLOUSE A, B, C

### BLOCK FOR TUCKS AND CUTTING LAYOUT A, C

**1.** To make tucks on six fabric sections from block for tucks (1), on **OUTSIDE**, fold along solid lines. Stitch 3/8" (1cm) fold. Press tucks in direction needed.

**TIP:** To easily transfer pattern pieces to prepared fabric, cut each piece from **light weight cardboard** and transfer grain arrow with pin holes. Place piece on prepared fabric as directed, and trace around outer edge. After cutting the fabric, transfer markings from the tissue to the fabric.

**2.** Place pattern pieces, (right) bodice front (2), (right) bodice side front (3), on prepared fabric with grain line parallel to folds and folds pressed away from center. Place **WRONG** side up pattern pieces, (left) bodice front (2), (left) bodice side front (3), on prepared fabric with grain line parallel to folds, folds pressed away from center, mirroring the fold placement of the right front sections. Cut out pieces. Transfer markings.



**NOTE:** Folds are pressed toward the LEFT for all back sections, (left) bodice side back (5), bodice back (4), and (right) bodice side back (5).

**3.** Place pattern piece (right) bodice back (4) on prepared fabric with pleats pressed toward the LEFT edge. Transfer markings. Flip pattern to WRONG side and align with center back to transfer (left) bodice back (4) markings. Cut out piece. On prepared fabric with pleats pressed toward the LEFT edge, place pattern piece (right) bodice back (5), and flipping the piece to the WRONG side, (left) bodice back with grain line parallel to folds. Cut out pieces. Transfer markings.

#### CONTINUE AS FOLLOWS FOR ALL VIEWS

**4.** With RIGHT sides together and raw edges even, pin bodice front (2) to bodice side front (3), matching notches. Stitch.

**5.** With RIGHT sides together and raw edges even, pin bodice back (4) to bodice side back (5), matching notches. Stitch.

#### RUFFLE A, C

**6.** Fold front ruffle (6) in half, lengthwise, with WRONG sides together. **GATHER** notched edge between large dot and front notch. Pin front ruffle to bodice front, matching small dots, large dots, and notches, pulling up gathering stitches to fit. Baste.

**7.** Fold back ruffle (7) in half, lengthwise, with WRONG sides together. **GATHER** notched edge between the large dots. Pin back ruffle to bodice back, matching small dots, large dots, and notches, pulling up gathering stitches to fit. Baste.

#### CONTINUE AS FOLLOWS FOR ALL VIEWS

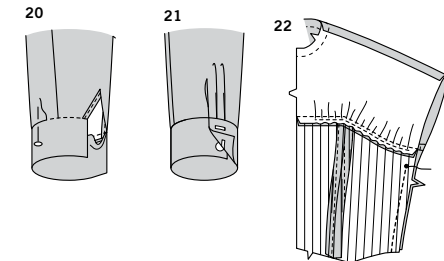
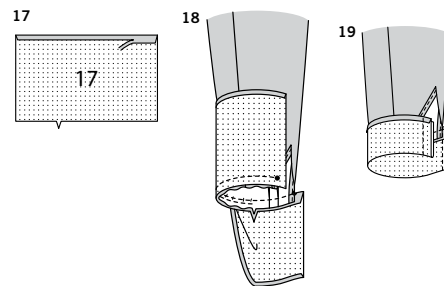
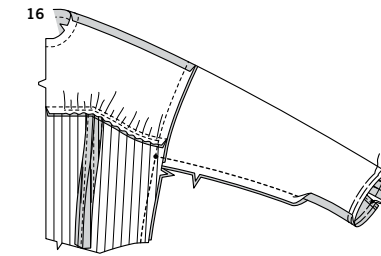
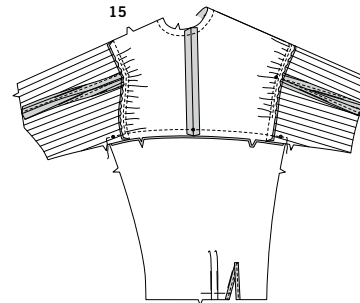
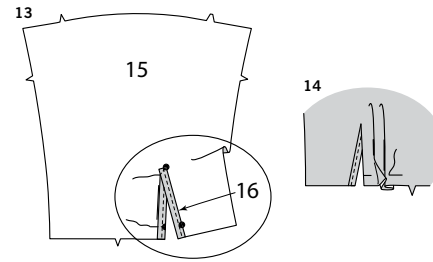
**8.** **STAYSTITCH** neck edge of yoke front (8). **GATHER** lower edge between large dot and front notch.

**9.** With RIGHT sides together and raw edges even, pin yoke front to bodice front, matching small dots, large dots, and notches, pulling up gathering stitches to fit. Baste; stitch. Press seam toward bodice, pressing ruffle out.

**10.** **STAYSTITCH** neck edge of yoke back (9). **GATHER** lower edge between notches.

**11.** With RIGHT sides together and raw edges even, pin yoke back to bodice back, matching small dots, large dots, and notches, pulling up gathering stitches to fit. Baste; stitch. Press seam toward bodice, pressing ruffle out.

**12.** Stitch front to back at shoulder edges.



#### SLEEVE A, B

**13.** Stitch **CONTINUOUS LAP**, continuous lap (16) to stitching lines on lower edge of sleeve (15).

**14.** To make pleats on sleeve, on OUTSIDE, fold along solid line. Bring fold to broken line; pin. Baste across lower edge.

**15.** With RIGHT sides together, pin sleeve to armhole edge with center small dot at shoulder seam, matching notches and remaining small dots. Stitch. Clip curves. Press seam toward sleeve.

**16.** Stitch bodice front to back at entire underarm seam, matching armhole seams, pivoting with needle in fabric at small dot. **EASE** stitch lower edge of sleeve between notch and small dot on back edge.

**17.** Apply **INTERFACING** to cuff (17). Press under 1/2" (1.3cm) on unnotched edge of cuff. Trim to 1/4" (6mm).

**18.** With RIGHT sides together, pin sleeve to cuff, placing opening edges at small dots, pulling up ease stitches to fit. Baste. Stitch. Trim seam. Press seam toward cuff, pressing cuff out.

**19.** Fold cuff along fold line, with RIGHT sides together. Stitch ends. Trim seams.

**20.** Turn cuff; press. On INSIDE, pin pressed edge of cuff over seam, placing pins on OUTSIDE. On OUTSIDE, **STITCH IN THE DITCH** of the seam, catching in pressed edge of cuff facing on the inside.

**21.** Make buttonholes on cuff at markings. Sew buttons at small dots, under buttonholes.

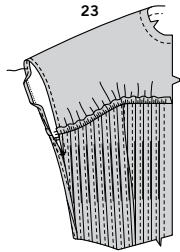
#### ARMHOLE C

**22.** Stitch front to back at side edges from lower edge to small dot, back-stitching at dot to reinforce the seam.

S9821

4 of 4

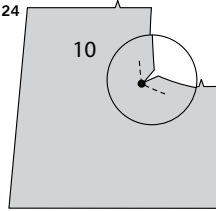
23



**23.** Press under armhole edge 5/8" (1.5cm). **NARROW HEM**, squaring stitching at small dot.

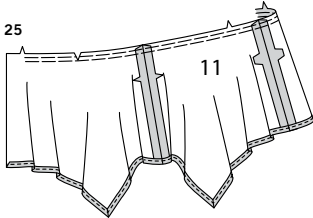
#### CONTINUE AS FOLLOWS FOR ALL VIEWS

24



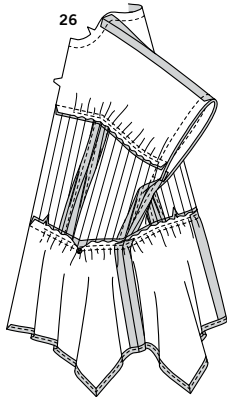
**24.** To **REINFORCE** upper edge of lower front (10), stitch along seam line for 1" (2.5cm) each side of large dot, stitching through the dot, as shown. Clip to stitching at dot.

25



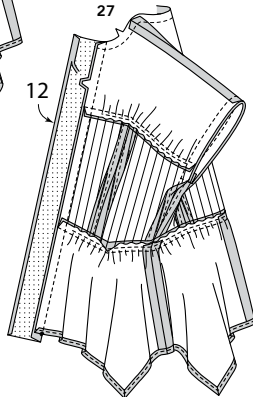
**25.** Stitch lower front to lower back (11) at side edges. Stitch center back seam. **GATHER** upper edge between the front notches. **NARROW HEM** lower edge.

26



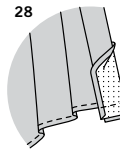
**26.** With **RIGHT** sides together, pin lower front and back to bodice front and back, matching seams, large dots, and notches. Pull up gathering stitches to fit. Baste; stitch. Press seam toward bodice.

27

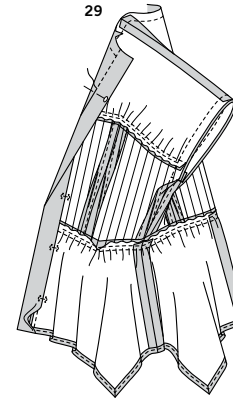


**27.** Apply **INTERFACING** to placket (12) sections. Press under a scant 1/2" (1.3cm) on unnotched edge. Trim to 1/4" (6mm). With **RIGHT** sides together and raw edges even, pin placket to front edges, matching small dots and notches. Stitch from upper edge to small dot, back-stitching at dot to reinforce the seam. Press seam toward placket, pressing placket out.

28



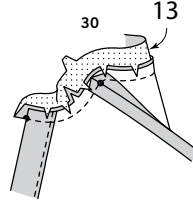
29



**28.** Turn front edge of placket to **OUTSIDE** along fold line, forming facing; stitch across lower edge. Trim seam.

**29.** Turn placket facing to **INSIDE** along foldline. On **INSIDE**, pin pressed edge of placket over seam, placing pins on **OUTSIDE**. On **OUTSIDE**, **STITCH IN THE DITCH** of the seam, catching in pressed edge of placket facing on the **INSIDE**.

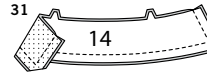
30



**30.** Apply **INTERFACING** to neckband (13). Clip blouse neck edge to stay-stitching. With **RIGHT** sides together, pin single notched edge of band to neck edge, matching centers back and placing small dots at shoulder seams. (Neckband extends 5/8" (1.5cm) beyond front opening edges.) Stitch neck edge. Trim seam; clip curves. Press band out; press seam toward band.

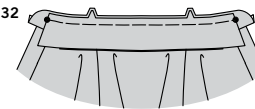
#### COLLAR A, C

31



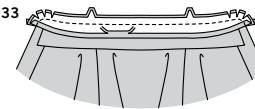
**31.** Apply **INTERFACING** to collar (14). With **RIGHT** sides together and raw edges even, stitch facing to collar, leaving notched edges open. Trim seam and corners.

32



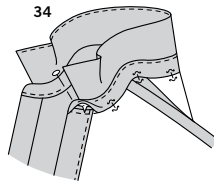
**32.** **UNDERSTITCH** the collar facing, as far as possible. Turn collar; press. Baste raw edges together. With **RIGHT** sides together and raw edges even, pin collar (facing side) to neckband, matching centers back and double notches and placing ends at large dots. Machine-baste.

33

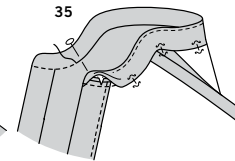


**33.** Press under 5/8" (1.5cm) on single notched edge of neckband facing; trim to 1/4" (6mm). With **RIGHT** sides together, pin neckband facing to neck band (over collar for Views A and C), matching centers. Stitch front and double notched edge. Trim seam; clip curves.

34



35



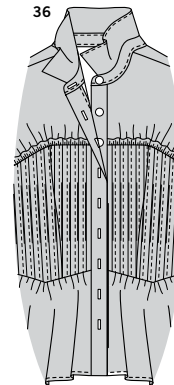
**34.** **FOR VIEWS A, C – UNDERSTITCH** the neckband facing as far as possible. Turn band facing to **INSIDE**; press. Pin pressed edge of facing over seam, placing pins on **OUTSIDE**. On **OUTSIDE**, stitch neckband close to seam, catching in pressed edge of facing on **INSIDE**.

**35.** **FOR VIEW B – UNDERSTITCH** the neckband facing as far as possible. Turn band facing to **INSIDE**; press. Pin pressed edge of facing over seam, placing pins on **OUTSIDE**. On **OUTSIDE**, **STITCH IN THE DITCH** of the seam, catching in pressed edge of facing on **INSIDE**.

#### FINISHING

**36.** Make buttonholes on **RIGHT** placket and neckband. Sew buttons to **LEFT** placket and neckband under buttonholes.

36





# Congrats!

You've completed your sewing adventure

---

**SHARE  
YOUR** LOOK



Post your pattern and tag us  
**@simplicity\_creative\_group** and **#simplicitypatterns**  
for a chance to be featured on our social media.

Look for more PDF patterns at **simplicity.com**

Have a question or need help with your sewing project call us at  
1-888-588-2700



Simplicity ©2023 a division of IG Design Group Americas Inc. • Atlanta, GA 30342 USA www.thedesigngroup.com • All Rights Reserved. www.simplicity.com • Made in the U.S.A. Fabriqué aux États-Unis.

To be used for individual private home use only and not for commercial or manufacturing purposes. • A usage privé seulement et non à des fins commerciales ou de production en série. • Para uso privado solamente, no se puede utilizar con propósitos de comercialización o de producción en serie.