

S9819

**Simplicity**

1950s Vintage



Average

**MISSES' DRESSES AND JACKET**

**Suggested Fabrics:** Dress and Jacket A: Cottons, Taffeta. Dress B: Pre-pleated nylon. Contrast B: Cottons. Dress C: Cottons, Crepe, Wool. Jacket B,C: Cottons, Velveteen, Velvet, Wool. **Lining (optional):** Lining Fabric. **Interfacing:** Hair Canvas.

**Notions:** Dress A,B,C: 12" (30cm) zipper, hook and eye. Also for Dress A: Three large flowers. Also for Dress B: 4½ yds. (4.1m) of ½" (1.3cm) grosgrain ribbon trim. Also for Dress C: Seam binding (optional). Jacket A,B,C: Four buttons, seam binding, pair of small rounded shoulder pads (optional).

Sizes	8	10	12	14	16	18	20	22	24	26
European	34	36	38	40	42	44	46	48	50	52

**BODY MEASUREMENTS: Select pattern size based on body measurements**

Bust	31½	32½	34	36	38	40	42	44	46	48	Ins.
Waist	24	25	26½	28	30	32	34	37	39	41½	"
Hip-9" below waist	33½	34½	36	38	40	42	44	46	48	50	"
Back-neck to waist	15¾	16	16¼	16½	16¾	17	17¼	17½	17¾	17¾	"

**Jacket Lining A,B,C (optional)**

45***	1½	1½	1½	1½	1½	1½	1½	1½	1½	1½	Yds.
-------	----	----	----	----	----	----	----	----	----	----	------

**Interfacing A,B,C (Jacket) - 20", ¾ yd.**

**Dress and Jacket A**

45**	8%	8%	8½	8½	8½	8½	8¾	8%	8%	8%	Yds.
------	----	----	----	----	----	----	----	----	----	----	------

**Dress B** 60\*\* 6½ 6½ 6½ 6½ 6½ 6½ 6½ 6½ 6½ 6½ Yds.

**Contrast B (Upper Bodice Front, Bodice Back Facings)**

45**	¾	¾	¾	¾	¾	¾	¾	¾	¾	¾	Yds.
------	---	---	---	---	---	---	---	---	---	---	------

**Jacket B,C** 45\*\* 1¼ 1¼ 1¾ 1¾ 1¾ 1½ 1½ 1½ 1½ 1½ Yds.

**Dress C** 45\*\* 5½ 5½ 6¾ 6¾ 6¾ 6¾ 6¾ 6¾ 6¾ 6¾ Yds.

**NOTE:** Please refer to the sewing instructions for **FINISHED GARMENT MEASUREMENTS**.

\*with nap \*\*without nap

Moins Facile

**ROBES ET VESTE POUR JEUNES FEMMES**

**Tissus Conseillés:** Robe et veste A: Cotons, Taffetas. Robe B: Nylon pré-plissé. Contraste B: Cotons. Robe C: Cotons, Crêpe, Laine. Veste B,C: Cotons, Velours de coton, Velours, Laine. **Doubleure (facultatif):** Tissu à doubleure. **Entoilage:** Toile tailleur.

**Mercerie:** Robe A,B,C: 1 fermeture à glissière de 30cm, agrafe. Aussi pour la robe A: 3 fleurs grandes. Aussi pour la robe B: 4.1m de galon de ruban gros-grain de 1.3cm. Aussi pour la robe C: extra-fort (facultatif). Veste A,B,C: 4 boutons, extra-fort, 1 paire de petites épaulettes arrondies (facultatif).

Tailles	8	10	12	14	16	18	20	22	24	26
Françaises	36	38	40	42	44	46	48	50	52	54
Européen	34	36	38	40	42	44	46	48	50	52

**MESURES DU CORPS: Choisissez la taille du patron basée sur les mesures du corps**

Poitrine	80	83	87	92	97	102	107	112	117	122	cm
Taille	61	64	67	71	76	81	87	94	99	106	"

**Hanches (23cm au-dessous de la taille)**

	85	88	92	97	102	107	112	117	122	127	cm
Dos du cou à la taille	40	40.5	41.5	42	42.5	43	44	44	44.5	44.5	"

**Veste Doubleure A,B,C (facultatif)**

115cm**	1.0	1.0	1.0	1.0	1.0	1.1	1.1	1.1	1.1	1.1	m
---------	-----	-----	-----	-----	-----	-----	-----	-----	-----	-----	---

**Entoilage A,B,C (Veste) - 51cm, 0.3m**

**Robe et veste A**

115cm*	7.7	7.7	7.7	7.8	7.8	7.8	8.0	8.1	8.1	8.1	m
--------	-----	-----	-----	-----	-----	-----	-----	-----	-----	-----	---

**Robe B** 150cm\* 6.0 6.0 6.0 6.0 6.0 6.0 6.0 6.0 6.0 6.0 m

**Contraste B (Corsage devant supérieur, Parementures de corsage dos)**

115cm*	0.6	0.6	0.6	0.7	0.7	0.7	0.7	0.8	0.8	0.8	m
--------	-----	-----	-----	-----	-----	-----	-----	-----	-----	-----	---

**Veste B,C** 115cm\* 1.1 1.1 1.3 1.3 1.3 1.4 1.4 1.5 1.5 1.5 m

**Robe C** 115cm\* 5.4 5.4 5.6 5.7 5.7 5.7 5.7 5.7 5.7 5.7 m

**NOTE:** S'il vous plaît, reportez-vous aux instructions de couture pour les **MESURES DU VÊTEMENTS FINI**.

\*avec sens \*\*sans sens



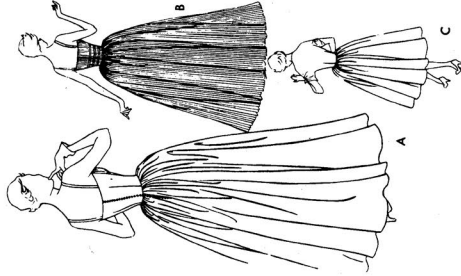
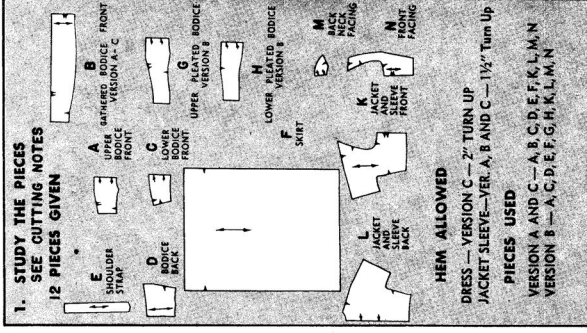
A



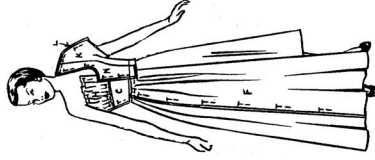
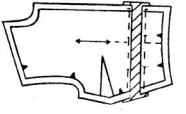
B



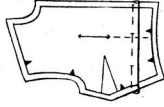
C



**2. PATTERN ADJUSTMENT**



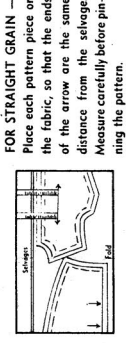
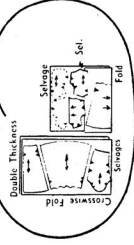
**TO SHORTEN**—Extend the straight of fabric line thru the shortening line. Crease pattern at shortening line and pin a tuck in pattern to take up the necessary amount. Be sure straight of fabric lines remain ruler-straight.



**FOR STRAIGHT GRAIN**—Place each pattern piece on the fabric, so that the ends of the arrow are the same distance from the selvage. Measure carefully before pinning the pattern.

**4. PREPARATION FOR CUTTING**

LAY OUT THE PATTERN PIECES. With a pencil circle the diagram you need for your size, the width of fabric used and the style used. When single fabric is used, place pattern on right side of fabric with pattern right side up. For fabric shown in double thicknesses, have right side of fabric facing each other. Broken lines indicate duplicate pieces or the shape of the whole piece when only half a pattern is given. Broken lines also indicate pieces (such as a belt) which are cut by a given measurement.



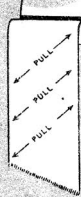
**TO CUT**—Cut pattern and fabric accurately on the cutting line with long firm slashes with the scissors. Cut notches out into the margin

**3. HANDLING YOUR FABRIC**



**PRESS FABRIC BEFORE CUTTING**  
Fabric should be sponged or pre-shrunk before cutting. If fabric is wrinkled or creased from folding, press carefully with a damp cloth on the wrong side of the fabric.

The crosswise threads should be squared with the selvage. If they are not, as shown at the right, pull fabric diagonally in the opposite direction.



**CUTTING NOTES**

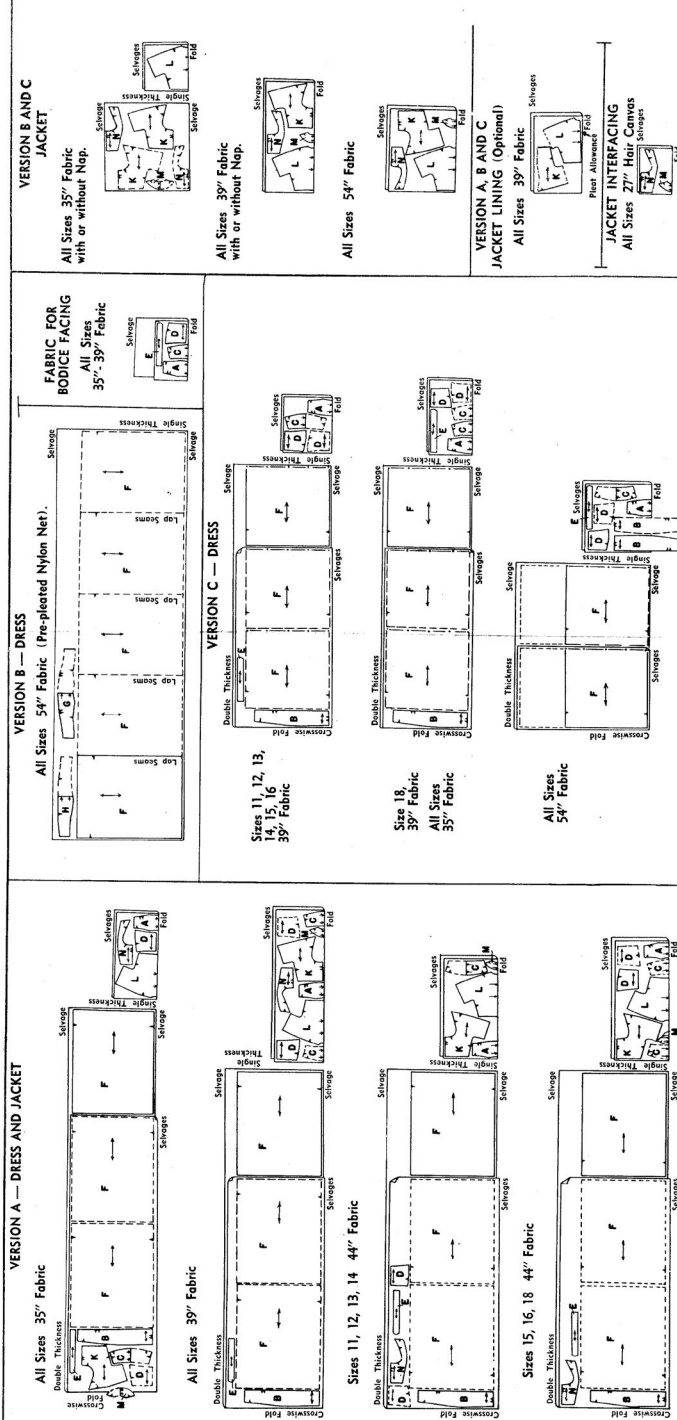
**5. CUTTING**

Cutting Diagrams for fabric without nap or one way design unless otherwise stated

When pattern piece extends beyond fold of fabric, open fabric before cutting; place pattern on right side of fabric in the position shown.  
DRESS—VERSION A, B AND C  
BIAS FACINGS—Cut of remnants.  
DRESS—VERSION A  
DRESS—VERSION B  
DRESS—VERSION C  
BODICE—Cut 1 on fold by pattern A. Cut 2 by pattern C. Cut 4 by pattern D.

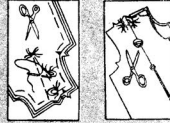
DRESS—VERSION B  
BODICE—Cut 1 on fold by pattern A of facing fabric. Cut 2 on fold by pattern C of facing fabric. Cut 2 by pattern D of facing fabric.  
SKIRT—Place pattern F on crosswise grain of fabric 5 times lappling  $\frac{3}{8}$ " seam allowance, as shown in cutting diagram. (This allows for skirt to be cut in one section with seam at center back.) Transfer all markings.  
DRESS—VERSION C  
SKIRT—When 54" fabric is used, place pattern F on lengthwise grain of fabric, 3 times as shown in cutting diagrams. Cut skirt the

full width of fabric. For other fabrics, cut 2 by pattern F.  
JACKET—VERSION A, B AND C  
INTERFACING—Cut 1 on fold or interfacing by pattern M. Cut 2 by pattern N.  
LINING (Optional)—After jacket has been cut, trim away pattern K along cutting line for lining. (Discard smaller section.) Pin up  $\frac{1}{2}$ " on lower edge of sleeve on patterns K and L. Cut lining by altered patterns allowing  $\frac{1}{2}$ " for pleat at center back neck edge on pattern L, tapering to nothing at lower edge, as shown in cutting diagrams.

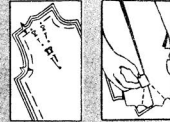


**6. MARKING**

The pattern line of your Simplicity pattern is perfect, as are all trimming lines, cutting lines and other important construction points. It is essential that all of these construction points be marked on fabric with tailor's chalk.



**TAILOR'S TACKS**—Make tailor's tacks thru marking lines and  $\frac{1}{8}$ ". Cut top loops before removing pattern. Separate two thicknesses of fabric and clip threads between layers. Run bastings using long stitching on right side of fabric at center front and back. Do not remove bastings until garment is finished.



**TAILOR'S CHALK**—Place pins thru marking lines and  $\frac{1}{8}$ ". Mark undersection of fabric along pin lines. For upper section, fold pattern back along pin lines and mark fabric, removing pins as you go along. Run bastings (using long stitches on right side of fabric) at centers front and back. Do not remove bastings until garment is finished.

**INITIAL FITTING**

Baste dress and jacket together, following sewing procedure outlined below, matching notches and making  $\frac{1}{8}$ " seams, unless otherwise instructed. Omit facings, etc. If shoulder pads are to be used in jacket, pin pads in place before basting. Baste bodice and skirt together, matching notches and pads to slip. Make sure that the shoulder seam falls on top of the shoulder pad. Center front and center back lines should hang perpendicular to the floor. Make necessary adjustments, paying particular attention to the fit of bodice and skirt. After fitting, go thru sewing procedure again, this time stitching by machine, unless otherwise instructed.

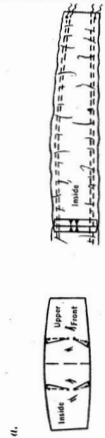
**AFTER STITCHING EACH SEAM** — Press seam open, unless otherwise instructed.

**SHORT BIAS CURVED EDGES** — To prevent stretching, make a stay line by machine stitching  $\frac{1}{2}$ " from these edges.

**LONG BIAS SEAMS** — (As in Skirt) — Allow time to hang a day. If seams draw, clip the biasing and allow to drop, stitch.

**SEAM FINISHES**

- Pink seams.
  - Overcast separately.
  - Turn in edges  $\frac{1}{8}$ " and stitch separately.
  - Shear Fabrics—Stitch again  $\frac{1}{8}$ " from seam. Trim. Press to one side.
- Make necessary adjustments, paying particular attention to the fit of bodice and skirt. After fitting, go thru sewing procedure again, this time stitching by machine, unless otherwise instructed.

**EVENING DRESS — VERSION A****BODICE****1. PREPARING BODICE SECTIONS**

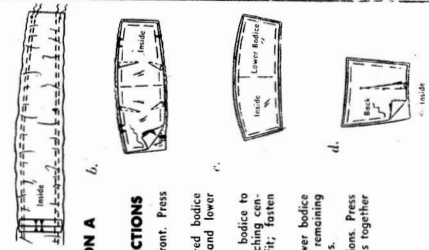
a—Make darts in upper bodice front. Press toward center front.

Join center front seam of gathered bodice front. Make gathers at upper and lower edges.

b—Pin WRONG side of gathered bodice to RIGHT side of upper bodice, matching centers front. Pull up gathers to fit; fasten threads. Baste all edges.

c—Pin WRONG side of one lower bodice front section to RIGHT side of remaining lower front section. Baste all edges.

d—Make darts in bodice back sections. Press toward center back. Baste sections together same as in paragraph c.

**2. ASSEMBLING BODICE SECTIONS**

With RIGHT sides together, join bodice front sections together. Trim seam. Press down. Baste back to front at sides. Trim seam. Press toward back.

**3. SHOULDER STRAP**

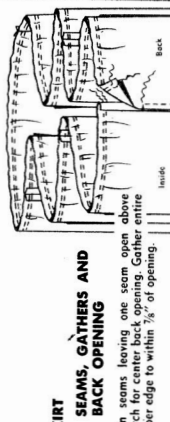
a—Fold strap in half lengthwise, RIGHT sides together; baste. Stitch long straight edge. Trim seam. Turn; baste.

b—Place strap at upper edge of bodice back matching medium and small \*s; baste.

**4. UPPER EDGE AND BACK OPENING**

Turn upper edge of back opening to OUTSIDE along seam line; baste. Cut a bias facing strip  $1\frac{1}{2}$ " wide. With RIGHT sides together, pin and baste to upper edge of bodice, extending ends over seam allowance at back opening. Trim seam.

Turn bias to INSIDE, nursing in seam allowance on back opening. Turn under row edge of bias and slip-stitch in place. Pin remaining end of shoulder strap to upper edge of upper bodice front between small \*s. Adjust to fit. (Sew in place when dress is completed.)

**SKIRT****5. SEAMS, GATHERS AND BACK OPENING**

Join seams, leaving one seam open above notch for center back opening. Gather entire upper edge to within  $\frac{3}{8}$ " of opening.

**6. WAISTLINE SEAM**

Pin skirt to bodice having opening edges even in center back. Pull up gathers to fit, distribute evenly. Press. Adjust length of bodice. Stitch seam. Press up.

**7. BACK OPENING**

Baste under seam allowance on back opening having edges meet at center of opening, placing lower end at lower end of opening, and turning in upper end of zipper tape. Baste in upper edge and lower side. Stitch by machine using center coming foot. Sew back and eye at upper edge.

**8. HEM**

Narrowly hem lower edge.  
Slip-stitch shoulder straps in place turning in ends. Press dress thoroughly.

**EVENING DRESS — VERSION B****9. BODICE**

Make darts in upper bodice front and back. Press toward centers. With WRONG sides together, join bodice front to lower bodice front. Turn under row edge of bodice front. With WRONG sides together, join front to back at sides. Trim seam. Press toward back.

**10. PLEATED BODICE**

a—To ease in fullness, gather upper pleated bodice along gathering line. Pin WRONG side of pleated section over RIGHT side of bodice. Match notches, centers, having upper edges even. Press. Turn under row edge of bodice front and stitching line in back. Pull up gathers to fit; fasten threads. Baste all edges.

b—To ease in fullness, gather lower pleated bodice along gathering lines. With RIGHT sides together, pin lower pleated bodice over upper pleated section, matching notches, centers and placing seam line along seam in front and stitching line in back. Pull up gathers to fit; fasten threads. Baste all edges. Stitch thru all thicknesses. Trim seam.

c—Turn lower pleated section down. Pin lower edge, lower shoulder pads, and upper edges. Fasten threads. Baste center back and lower edges.

Finish dress same as in Version A, following Steps 3 thru 7. Join center back seam leaving an opening above notch and sew zipper in by hand.

**11. RIBBON TRIM**

Baste a strip of grosgrain ribbon along seam of bodice and waistline, having upper edge of ribbon at seams and turning in ends of ribbon, as shown. Baste remaining two strips of ribbon between first two, spacing and grading them evenly and turning in ends. Hand sew ribbons in place along upper edges.

Slip-stitch shoulder straps in place, turning in ends. Press dress thoroughly.

NOTE: — Prepared nylon net should not be finished at lower edge.

**AFTERNOON DRESS — VERSION C**

Make same as Version A, following Steps 1 thru 7.

**12. HEM**

Mark length of dress using a hem marker or ruler. Turn under row edge of hem. Press depth of hem; trim evenly. Stitch wide edge of hem in place, easing in fullness. Slip-stitch shoulder straps in place turning in ends. Press dress thoroughly.

**JACKET — VERSION A, B AND C**

NOTE: When jacket is unlined omit catch-stitching on inner edges of facings, interfacing and hems. Encase raw edges of seams and inner edges of facings and hems in seam binding, interfacing or lining in place. Slip-stitch facings and hems in place.

**13. DARTS AND INTERFACING**

Make darts in front and back. Press underarm dart down and remaining darts toward centers.

Baste interfacing to WRONG side of front and back. Catch-stitch inner edges in place.

**14. BOUND BUTTONHOLES**

If pattern has been altered, reshape buttonhole markings.

Make bound buttonholes in RIGHT front. (If desired, make worked or machine made buttonholes, when garment is finished.)

a—Baste a strip of fabric (RIGHT sides together) over marking. Stitch  $\frac{1}{8}$ " above and below marking. Draw strip to INSIDE ends. Slash at slown.

b—Make piping with edges meeting, forming a pleat at ends; sew to seam.

**15. SEAMS**

Join front to back at shoulder. Join entire underarm seam. Clip along curve.

**16. FACINGS**

Join back neck facing to front facing at shoulder. With RIGHT sides together, join neck facing to collar. Press neck and seam and easing in jacket front to fit between notches at neck edge. Stitch across facing at lower edge. Trim seam.

Turn facing to INSIDE; baste.

**17. LOWER EDGE OF SLEEVE**

Turn up lower edge; baste. Catch-stitch in place.

**18. SHOULDER PADS, FINISHING FACING AND LOWER EDGE**

Sew pads in place slipping thinner and under facing. Catch-stitch facing in place. Baste under seam allowance at lower edge. Baste seam binding  $\frac{1}{8}$ " over raw edge; stitch. Slip-stitch in place.

**19. JACKET LINING**

Make darts and join seams same as for jacket, omitting dart at front waistline. Pin lining to bodice and skirt. Press. Join seams together loosely to within  $\frac{3}{8}$ " of lower edge. Trim away  $2\frac{1}{4}$ " from back neck edge. Baste under  $\frac{3}{8}$ " on front, neck and lower edges; clip curves.

Baste lining over facing to within  $\frac{3}{8}$ " of lower edge, pleating out fullness at center back neck edge. Catch-stitch pleat at neck edge. To hold lining in place, baste it to jacket  $3\frac{1}{2}$ " above lower edge. Place lower edge of lining  $\frac{3}{8}$ " over upper edge of seam binding and neck edges in place. Hand saw front and neck edges in place.

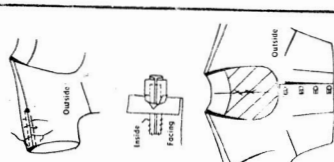
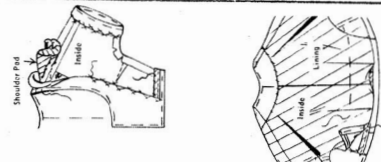
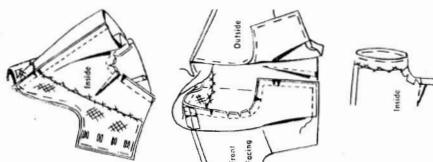
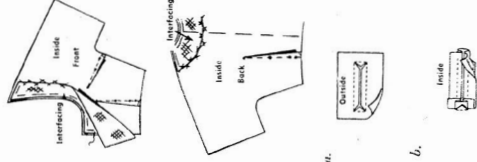
To hold sleeve lining in place, baste it to sleeve  $2\frac{1}{2}$ " above lower edge. Place lower edge  $\frac{3}{8}$ " over raw edge of sleeve; baste. Slip-stitch in place.

**20. GATHERS**

Make gathers at shoulder. Pull up gathers to fit; fasten threads. To reinforce, on INSIDE, hold gathers in place with back stitches.

**21. FINISHING**

Finish underside of bound buttonholes. Baste gathered around buttonholes. Slip facing and bound buttonholes. Slip facing and buttonholes. Lap RIGHT front over LEFT matching centers. Sew buttons under buttonholes.

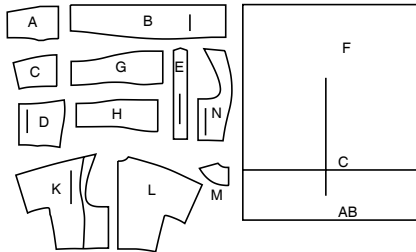


# Simplicity®

Thank you for purchasing this Simplicity pattern. We made every effort to provide you with a high quality product.

## SUPPLEMENTAL CUTTING LAYOUTS

12 PIECES



- A UPPER BODICE FRONT-A,B,C
- B GATHERED BODICE FRONT-A,C
- C LOWER FRONT BODICE-A,B,C
- D BODICE BACK-A,B,C
- E SHOULDER STRAP-A,B,C
- F SKIRT-A,B,C
- G UPPER PLEATED BODICE-B
- H LOWER PLEATED BODICE-B
- K JACKET AND SLEEVE FRONT-A,B,C
- L JACKET AND SLEEVE BACK-A,B,C
- M BACK NECK FACING-A,B,C
- N FRONT FACING-A,B,C

Sizes	8	10	12	14	16	18	20	22	24	26
European	34	36	38	40	42	44	46	48	50	52

**FINISHED GARMENT MEASUREMENTS (Includes Design and Wearing Ease)**

Dress A,B,C Bust	32	33	34 $\frac{1}{2}$	36 $\frac{1}{2}$	38 $\frac{1}{2}$	40 $\frac{1}{2}$	42 $\frac{1}{2}$	44 $\frac{1}{2}$	46 $\frac{1}{2}$	48 $\frac{1}{2}$	50	*
Jacket A,B,C Bust	35 $\frac{1}{2}$	36 $\frac{1}{2}$	38	40	42	44	46	48	50	52	*	
Dress A,B,C Waist	25	26	27 $\frac{1}{2}$	29 $\frac{1}{2}$	31 $\frac{1}{2}$	33 $\frac{1}{2}$	35 $\frac{1}{2}$	37 $\frac{1}{2}$	39 $\frac{1}{2}$	41 $\frac{1}{2}$	*	
Jacket A,B,C Waist	25 $\frac{1}{2}$	26 $\frac{1}{2}$	28	30	32	34	36	38	40	42	*	
<b>Finished back length from base of neck</b>												
Dress A,B	57 $\frac{1}{2}$	58	58 $\frac{1}{2}$	58 $\frac{1}{2}$	58 $\frac{1}{2}$	59	59 $\frac{1}{2}$	59 $\frac{1}{2}$	59 $\frac{1}{2}$	60	Ins.	
Dress C	47 $\frac{1}{2}$	48	48 $\frac{1}{2}$	48 $\frac{1}{2}$	48 $\frac{1}{2}$	49	49 $\frac{1}{2}$	49 $\frac{1}{2}$	49 $\frac{1}{2}$	50	*	
Jacket A,B,C	15 $\frac{1}{2}$	16	16 $\frac{1}{2}$	16 $\frac{1}{2}$	16 $\frac{1}{2}$	17	17 $\frac{1}{2}$	17 $\frac{1}{2}$	17 $\frac{1}{2}$	18	*	

## The Pattern General Directions Cutting/Marking

**SYMBOLS**

- GRAIN LINE Place on straight grain of fabric parallel to selvage
- PLACE SOLID LINE on fold of fabric.
- CENTER FRONT OR BACK of garment.
- NOTCHES
- DOTS
- CUTTING LINE
- LENGTHEN OR SHORTEN LINES

**ADJUST IF NEEDED**

Make adjustments before placing pattern on fabric.

**TO LENGTHEN:** Cut pattern between lengthen or shorten lines. Spread pattern evenly, the amount needed and tape to paper.

**TO SHORTEN:** At lengthen or shorten lines, make an even pleat taking up amount needed. Tape in place.

When lengthen or shorten lines are not given, make adjustments at lower edge of pattern.

**SEAM ALLOWANCE:** 5/8" (1.5cm) unless otherwise stated is included but not printed on MULTI-SIZE PATTERNS. Mark your size with colored felt tip pen. See chart on tissue for how to use MULTI-SIZE PATTERNS.

**BEFORE CUTTING:**

PRESS pattern pieces with a warm dry iron. PRE-SHRINK fabric by pre-washing washables or steam-pressing non-washables.

CIRCLE your cutting layout.

PIN pattern to fabric as shown in Cutting Layouts.

- FOR DOUBLE THICKNESS: Fold fabric with RIGHT sides together.
- FOR SINGLE THICKNESS: Place fabric RIGHT side up.
- FOR PILE, SHADED OR ONE WAY DESIGN FABRICS: Use "with nap" layouts

**AFTER CUTTING:**

Transfer markings to WRONG side of fabric before removing pattern. Use pin and chalk method or dressmaker's tracing paper and wheel.

**To Quick Mark:**

- Snip edge of fabric to mark notches, ends of fold lines and center lines.
- Pin mark dots.

**Sewing**

- SEW garment following **Sewing Directions**.
- PIN or machine-baste seams matching notches.
- STITCH 5/8" (1.5 cm) seams unless otherwise stated.
- PRESS seams open unless otherwise indicated clipping when necessary so seams will lie flat.
- TRIM seams to reduce bulk, as shown below.

Trim enclosed seams into layers    Trim corners    Clip inner curves    Notch outer curves

**SPECIAL CUTTING NOTES**

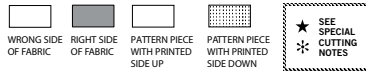
- ★ If layout shows a piece extending past fold, cut out all pieces except piece that extends.
- ✱ Mark small arrows along both selvages indicating direction of nap or design. Fold fabric crosswise with RIGHT sides together, and cut along fold (a).

Open out fabric to single thickness. Cut extending piece on RIGHT side of fabric in position shown.

a. SELVAGE SELVAGES  
b. SELVAGES

Turn one fabric layer around so arrows on both layers go in the same direction. Place RIGHT sides together (b).

## Cutting Layouts

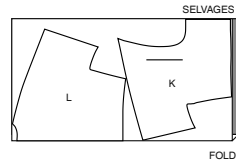


POSITION OF PATTERN PIECES MAY VARY SLIGHTLY ACCORDING TO YOUR PATTERN SIZE

### LINING A,B,C (OPT.)

USE PIECES K L

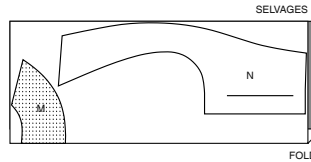
45" (115CM)  
WITHOUT NAP  
ALL SIZES



### INTERFACING A,B,C

USE PIECES M N

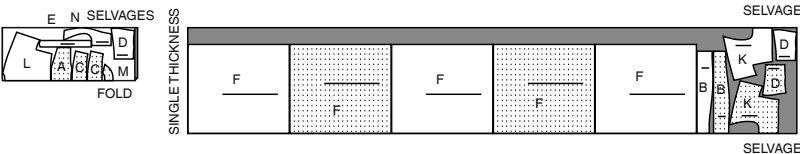
20" (51CM)  
ALL SIZES



### DRESS A WITH JACKET

USE PIECES A B C D E F K L M N

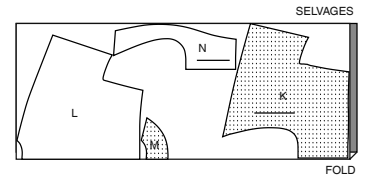
45" (115CM) WITH NAP / ALL SIZES



### JACKET B,C

USE PIECES K L M N

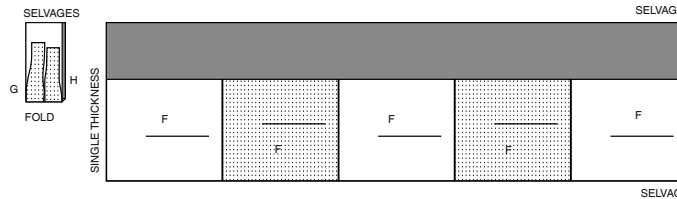
45" (115CM)  
WITH NAP  
ALL SIZES



### DRESS B

USE PIECES A C D E F G H

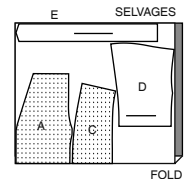
60" (150CM) WITH NAP / ALL SIZES



### CONTRAST B (BODICE FACINGS)

USE PIECES A D

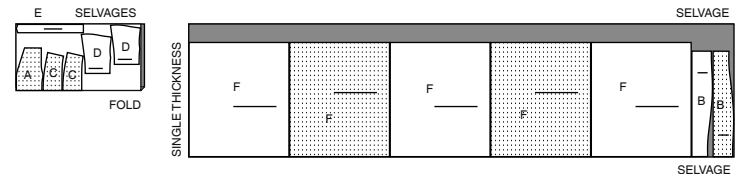
45" (115CM)  
WITH NAP  
ALL SIZES



### DRESS C

USE PIECES A B C D E F

45" (115CM)  
WITH NAP  
ALL SIZES





# Congrats!

You've completed your sewing adventure

---

**SHARE  
YOUR** LOOK



Post your pattern and tag us  
**@simplicity\_creative\_group** and **#simplicitypatterns**  
for a chance to be featured on our social media.

Look for more PDF patterns at **simplicity.com**

Have a question or need help with your sewing project call us at  
1-888-588-2700



Simplicity ©2023 a division of IG Design Group Americas Inc. • Atlanta, GA 30342 USA [www.thedesigngroup.com](http://www.thedesigngroup.com) • All Rights Reserved. [www.simplicity.com](http://www.simplicity.com) • Made in the U.S.A. Fabriqué aux États-Unis.

To be used for individual private home use only and not for commercial or manufacturing purposes. • A usage privé seulement et non à des fins commerciales ou de production en série. • Para uso privado solamente, no se puede utilizar con propósitos de comercialización o de producción en serie.