

S9818

Simplicity

1950s Vintage

SIMPLE TO MAKE



Easy

MISSES' BLOUSES

Suggested Fabrics: Cotton/Cotton Blends, Cotton Surah, Linen, Pique, Poplin, Rayons, Satin, Silk Broadcloth. **View 1** also in Jersey, Wool. **View 3** also in Lengthwise Striped Fabric. **Interfacing (optional):** Lightweight Sew-in.

Notions: Five buttons, one small button, bias seam binding (opt.)

Sizes	6	8	10	12	14	16	18	20	22
European	32	34	36	38	40	42	44	46	48

BODY MEASUREMENTS: Select pattern size based on body measurements

	6	8	10	12	14	16	18	20	22
Bust	30½	31½	32½	34	36	38	40	42	44
Waist	23	24	25	26½	28	30	32	34	37
Hip-9" below waist	32½	33½	34½	36	38	40	42	44	46
Back-neck to waist	15½	15¾	16	16¼	16½	16¾	17	17¼	17½

Blouse View 1

	45**	2	2½	2½	2½	2½	2½	2½	2½	Yds.
60**	1½	1½	1½	1½	1½	1½	1½	1½	1½	"

Interfacing Views 1,2 (optional): 25" - ¾ yd.

Blouse View 2

	45**	1¾	1¾	1¾	1¾	1¾	2½	2½	2½	Yds.
60**	1¼	1¼	1¼	1¼	1¼	1¼	1½	1½	1½	"

Blouse View 3

	45**	1¼	1¼	2	2	2	2½	2½	2½	Yds.
60**	1¼	1¼	1¼	1¼	1¼	1¼	1½	1½	1½	"

Interfacing Views 3 (optional): 25" - ¾ yd.

FINISHED GARMENT MEASUREMENTS (Includes Design and Wearing Ease)

	6	8	10	12	14	16	18	20	22
Bust	34	35	36	37½	39½	41½	43½	45½	47½
Waist	32½	33½	34½	36	38	40	42	44	46
Width, lower edge									
Views 1,2,3	34½	35½	36½	38	40	42	44	46	48
Finished back length from base of neck									
Views 1,2,3	21½	21¾	22	22¼	22½	22¾	23	23¼	23½

*with nap **without nap

Facile

CHEMISIERS POUR JEUNES FEMMES

Tissus Conseillés: Coton/Cotonnades, Coton surah, Toile de lin, Piqué, Popeline, Rayonnes, Satin, Broadcloth de soie. **Modèle 1** aussi en Jersey, Laine. **Modèle 3** aussi en tissu à rayures dans le sens de la longueur. **Entoilage (facultatif):** léger à coudre.

Mercerie: 5 boutons, 1 petit bouton, extra-fort en biais (facultatif).

Tailles	6	8	10	12	14	16	18	20	22
Françaises	34	36	38	40	42	44	46	48	50
Européen	32	34	36	38	40	42	44	46	48

MESURES DU CORPS: Choisissez la taille du patron basée sur les mesures du corps

	6	8	10	12	14	16	18	20	22
Poitrine	78	80	83	87	92	97	102	107	112
Taille	58	61	64	67	71	76	81	87	94
Hanches (23cm au-dessous de la taille)									
Dos du cou à la taille	39.5	40	40.5	41.5	42	42.5	43	44	44

Chemisier modèle 1

	115cm*	1.8	1.8	1.9	1.9	1.9	1.9	2.3	2.3	2.4
150cm*	1.4	1.4	1.4	1.4	1.4	1.4	1.4	1.5	1.5	1.7

Entoilage modèles 1,2 (facultatif): 64cm - 0.3m

Chemisier modèle 2

	115cm*	1.6	1.6	1.6	1.6	1.6	1.9	2.1	2.1	2.2
150cm*	1.1	1.1	1.1	1.3	1.3	1.3	1.4	1.4	1.5	1.5

Chemisier modèle 3

	115cm*	1.7	1.7	1.7	1.8	1.8	1.9	1.9	2.1	2.2
150cm*	1.1	1.1	1.1	1.1	1.1	1.1	1.1	1.4	1.6	1.6

Entoilage modèles 3 (facultatif): 64cm - 0.2m

MESURES DES VÊTEMENTS FINI (Motif et aisance de port compris)

	6	8	10	12	14	16	18	20	22
Poitrine	86	89	91	95	100	105	110	116	121
Taille	83	85	88	91	97	102	107	112	117
Largeur à l'ourlet									
Modèles 1,2,3	88	90	93	97	102	107	112	117	122
Longueur finie - dos, votre nuque à l'ourlet									
Modèles 1,2,3	55	55	56	57	57	58	58	59	60

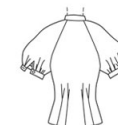
*avec sens **sans sens



1



2



3

Follow This Step-By-Step Procedure
in the Numbered Order

- 1 Select the Pattern Pieces**
for the view you are making. Return other pieces to envelope.
- 2 Press the Pattern Pieces.**
- 3 Compare Your Measurements**
with the pattern.
- 4 Alterations, if necessary, should**
be made in the pattern before placing on fabric. **(Caution:** In addition to body measurements, ease is allowed in the pattern for garment style and comfortable wearing.) Pattern pieces show where to make simple alterations such as:
 - To Shorten**
 - Crease on printed line. Pin a pleat in pattern the required amount.
 - To Lengthen**
 - Cut pattern on printed line. Place paper underneath. Spread pattern apart the necessary amount and pin to paper.
 - See the **Simplicity Sewing Book** for other alterations.
- 5 Prepare Fabric.** Press creases out of fabric. Unless fabric is pre-shrunk, sponge or shrink before cutting.
To Straighten End. Snip selvedge and pull a crosswise thread. Cut on this line. Some fabrics may be straightened by heating.

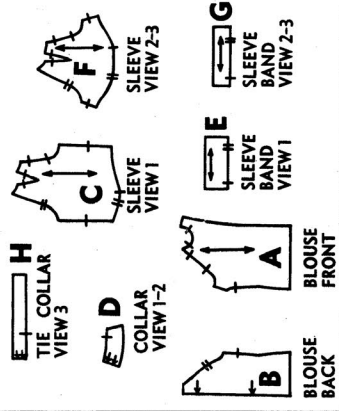
- To Straighten Threads.** If crosswise threads of fabric are not at perfect right angles to the selvedge, pull the fabric on the bias in the opposite direction until crosswise threads are straight and squared with the selvedge.
- 6 Cutting Preparation.**
 - Circle in pencil the cutting layout for the view, size and fabric width.
 - If pattern is to be cut on double thickness of fabric, fold fabric with right side inside and place pattern on wrong side. For single thickness, place pattern on right side of fabric.
 - Guides for using your pattern:**
 - This grain line indicates straight of fabric. Place pattern with ends of arrows an even distance from selvedge or a straight thread.
 - These fold lines indicate fold of fabric. Turn margin under on printed line before placing on fold of fabric.
 - Notches mark seams to be joined.
 - Follow your cutting layout when placing pattern pieces on fabric. Pattern may be placed on fabric, printed side up or against fabric, as shown in layout.
 - When duplicate pieces are cut one at a time, reverse the pattern for the second piece. On cutting layouts, duplicate pieces are shown by broken lines.

When a pattern piece extends beyond fold of fabric, cut out all other pattern pieces, then open fabric and cut that pattern piece.

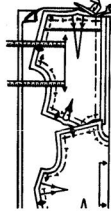
Study the pattern pieces and see cutting notes.

VIEW 1 A,B,C,D,E
VIEW 2 A,B,D,E,G
VIEW 3 A,B,E,F,G,H

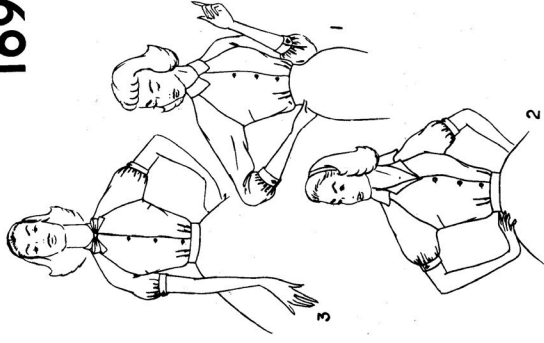
8 PIECES GIVEN



7 To Cut. Do not trim margins off. Margins may be overlapped when placing pattern on fabric. Cut through pattern and fabric exactly on cutting line. Margins fall away as you cut.



Simplicity primer
Guide for Cutting — Sewing — Detailed Dressmaking
1692



THE SIMPLICITY SEWING BOOK gives complete instructions and illustrations on all phases of sewing

Cutting Notes For This Pattern

VIEW 1-2, 3
FRONT INTERFACING (OPTIONAL) Cut a strip of interfacing 2" wide and the measurement of center front line.

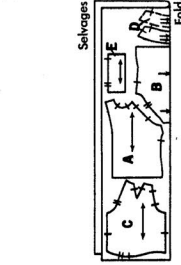
VIEW 1 AND 2
COLLAR INTERFACING (OPTIONAL) Cut 1 on fold by D.

VIEW 1
CONTINUOUS LAP — Cut 2 straight strips of blouse fabric 1" wide and twice the measurement of sleeve opening.

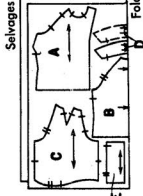
Cutting Layouts

View 1

All Sizes 39" Fabric Without Nap
Sizes 11, 12, 13, 14 - 35" 36" Fabric Without Nap



Sizes 16, 18 - 54" Fabric Without Nap



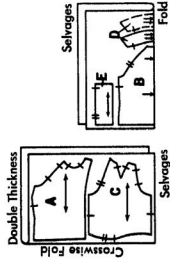
View 1-2
INTERFACING

All Sizes 25" 32" 35" 36" Fabric

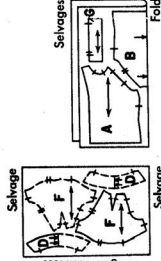


View 2

Sizes 15, 16, 18 - 35" 36" Fabric Without Nap

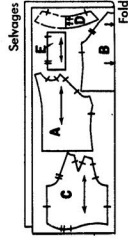


All Sizes 39" Fabric Without Nap
Sizes 11, 12, 13, 14, 15 - 35" 36" Fabric Without Nap

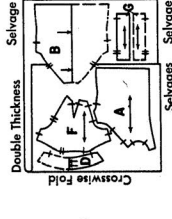


View 3

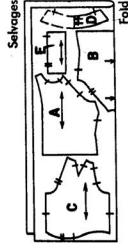
All Sizes 44" 45" Fabric One Way Design



Sizes 16, 18 - 35" 36" Fabric Without Nap



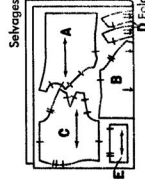
All Sizes 44" 45" Fabric Without Nap



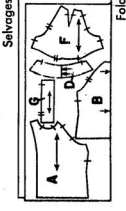
All Sizes 44" 45" Fabric Without Nap



Sizes 11, 12, 13, 14, 15 - 54" Fabric Without Nap



All Sizes 44" 45" One Way Design Fabric



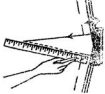
8 Mark Fabric. Construction details must be marked on the fabric. Mark center front and back with a 1/4 inch clip at top and bottom.



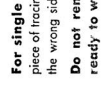
Thread without knot. Take 2 small stitches thru pattern and both fabric layers, leaving long loop. Cut top loops and remove pattern. Separate fabric, clip threads between fabric



layers, leaving thread tuft on both. **Tracing Wheel and Dressmaker's Tracing Paper.** Markings should be made on wrong side of fabric. Use ruler to guide



straight lines; mark curves freehand. **For doubled fabric,** lay one piece of tracing paper face up under the wrong side of fabric. **Do not remove pattern until ready to work on each piece.**



For single thickness: lay one piece of tracing paper face up under the wrong side of fabric. **Do not remove pattern until ready to work on each piece.**



1692

SEWING DIRECTIONS

- 1. READ INSTRUCTIONS** printed on each pattern piece as you work.
 - 2. WORK IN UNITS** such as Blouse Front, Blouse Back, Sleeves, etc.
 - 3. STAY-STITCH** off-grain curved or bias edges. Stay-stitching is a line of regular machine-stitching (in one thickness of fabric) 1/8" from seam line, within the seam allowance.
 - STAY-STITCHING** will be shown only the first time a section of the garment is illustrated.
 - 4. SEAM ALLOWANCE** is 5/8" unless otherwise stated.
 - 5. TO JOIN SEAMS**, match notches with same numbers, 1 to 1, 2 to 2. Continue in this order.
 - 6. STITCHING DIRECTIONS** (are shown on your printed pattern.) Press each seam before it is joined to another. Press in same direction as it was stitched.
 - 7. FITTING:** Try on garment; make adjustments if necessary.
- NOTE:** We suggest machine-basting. To machine-baste, use longest machine-stitch.

SUGGESTED SEAM FINISHES

- a—Pink seams.**
- b—Overcast separately.**
- c—Turn in edges 1/8" and stitch separately.**
- d—For enclosed seam, trim seam, clipping corners and curves.**

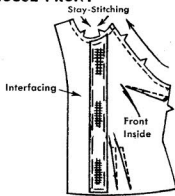
VIEW 1 BLOUSE

UNIT 1 - BLOUSE FRONT

On **INSIDE**, baste interfacing to **WRONG** side of front sections **INSIDE** fold line.

To make darts on **INSIDE**, fold along solid lines. Stitch along broken lines. Press darts down.

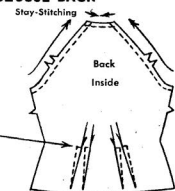
To make dart tucks on **INSIDE**, fold along solid lines. Stitch along broken lines, stitching across to fold, as shown. Press tucks toward center.



UNIT 2 - BLOUSE BACK

Make dart tucks in back same as for front.

Press toward center.



UNIT 3 - SLEEVES

a—To make dart seam in sleeves, on **INSIDE**, bring seam lines together, matching notches and small dots ●. Stitch. Slash seam; press open.

b—Stitch along stitching line at lower edges of sleeves.

To reinforce point, stitch again over first stitching. Stash between stitching.

c—Baste **RIGHT** side of strip for continuous lap to **WRONG** side of slash, placing stitching line in skirt 1/4" from edge of lap. Stitch 1/4" from edge of lap, tapering to nothing at point of slash.

Turn under 1/4" on long raw edge of lap and top-stitch over seam. Turn front lap to **INSIDE**; baste.

JOINING SLEEVE UNIT TO BLOUSE FRONT AND BACK UNITS

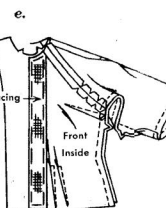
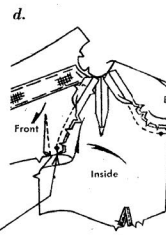
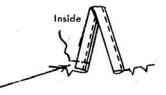
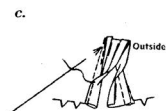
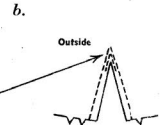
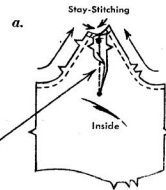
d—Clip curves at armhole edges of blouse front and back to stay-stitching.

With **RIGHT** sides together, pin sleeves to blouse front sections, easing front to fit between notches and easing sleeves to fit between notch and small dot ●.

Pin sleeves to blouse back, easing sleeves to fit between notches and small dots ●. Baste seams. Stitch. Clip curves; press seams open.

e—Join entire underarm seams of blouse and sleeve.

Gather lower edges of sleeves between notches, using a long machine-stitch or gathering foot.



UNIT 4 - COLLAR

a—Baste interfacing to **WRONG** side of collar facing section.

With **RIGHT** sides together, stitch facing to collar, leaving notched edge open. Trim interfacing close to seams. Trim seams and corners.

b—Turn collar; press.

Clip neck edge of blouse to stay-stitching. On **OUTSIDE**, pin collar to neck edge, matching centers and small dots ● at shoulders.

Baste both sections of collar to front neck edge and interfacing to back neck edge.

c—Stitch under 1/4" on shoulder and inner long unnotched edge of front extensions.

Turn front extension to **OUTSIDE** along fold line, forming facings. Baste to neck edge. Clip neck seam to small dot ● in collar thru all thicknesses. Stitch entire neck edge as basted.

Trim interfacing close to stitching. Trim seam; clip curve.

d—Turn facings to **INSIDE**. Press back neck seam up.

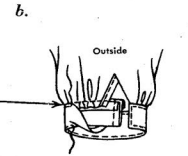
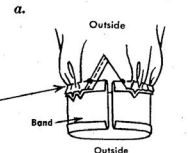
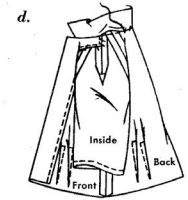
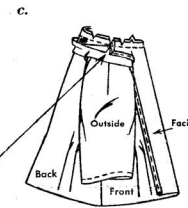
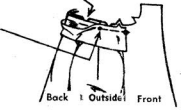
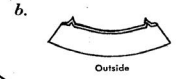
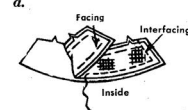
Turn under seam allowance on remaining raw edge of collar. Trim to 1/4" and slip-stitch in place over neck seam. Trim facings to seams. Tack.

UNIT 5 - SLEEVE BAND

a—Press under seam allowance on long unnotched edge of bands.

Pin **WRONG** side of sleeve to **RIGHT** side of band, matching notches and small dots ●. Pull up gathers to fit; baste. Stitch seam. Press toward band.

b—Fold band in half lengthwise, **RIGHT** sides together. Stitch ends. Trim seam. Turn band; press. Top-stitch pressed edge in place over seam. Continue stitching along remaining edges of band.



FINISHING

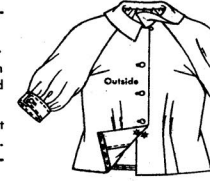
Narrowly hem lower edge of blouse. Machine-stitch and pink or finish with bias seam binding.

Press blouse thoroughly.

Make worked or machine-made buttonholes in blouse **RIGHT** front and in sleeve bands.

Work thread loop at **RIGHT** front neck edge. Sew small button opposite loop.

Lap **RIGHT** front over **LEFT**, matching centers. Lap ends of bands. Sew buttons under buttonholes. Sew snap at waistline.



VIEW 2 BLOUSE

Prepare Blouse same as in View 1, see Units 1 and 2.

UNIT 6 - SLEEVES

a—To make dart seam in sleeves, on **INSIDE**, bring seam lines together, matching notches and small dots ●. Stitch. Slash seam; press open.

b—Stitch along stitching line at lower edges of sleeves.

To reinforce point, stitch again over first stitching. Slash between stitching.

c—Encase slashed edges in bias fold tape or bias seam binding. Turn front opening edge to **INSIDE**; press. Baste.

d—To make soft pleats at lower edge of sleeves, on **OUTSIDE**, fold and baste along solid line of pleat, near opening edge. Fold along remaining solid lines, bring folds to broken lines; baste.

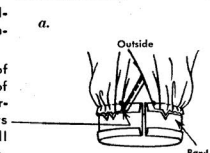
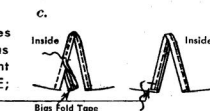
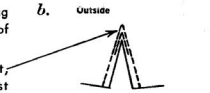
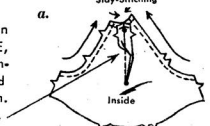
For Joining Sleeve Unit To Blouse Front And Back Units, see Unit 3, steps d and e.

For Collar, see Unit 4.

UNIT 7 - SLEEVE BANDS

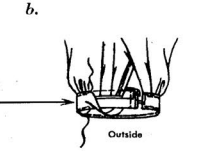
a—Press under seam allowance on remaining raw edge of bands.

Pin **WRONG** side of sleeve to **RIGHT** side of band, having pleats nearest opening at small dots ● in band as shown. Pull up gathers to fit; baste. Stitch seam. Press toward band.



b—Fold band in half lengthwise, **RIGHT** sides together. Stitch ends. Trim seam. Turn band; press. Top-stitch pressed edge in place over seam. Continue stitching along remaining edges of band.

For Finishing, see Blouse View 1.



VIEW 3 BLOUSE

Prepare Blouse same as in View 1, see Units 1 and 2. For Sleeves, see View 2, Unit 6. For Joining Sleeve Unit To Blouse Front And Back Units, see Unit 3, steps d and e.

UNIT 8 - TIE COLLAR

a—Stitch under 1/4" on shoulder and long unnotched edge of front extension.

Turn extensions to **OUTSIDE**, along fold line, forming facing. Stitch neck edge as far as small dots ●. Clip to small dots ●. Trim seam.

b—Turn facing to **INSIDE**; press. Baste to neck edge.

Clip blouse neck edge to stay-stitching. Tack facings to seams.

c—With **RIGHT** sides together, pin tie collar to neck edge, matching centers and small dots ●. Stitch between small dots ●. Trim seam; clip curve. Press seam toward collar.

d—Fold collar in half lengthwise, **RIGHT** sides together. Stitch ends below small dots ●, as shown. Trim seams and corners.

e—Turn collar; press. Press under seam allowance on remaining raw edge of collar; trim to 1/4" and slip-stitch in place over neck seam.

For Sleeve Band, see Unit 7.

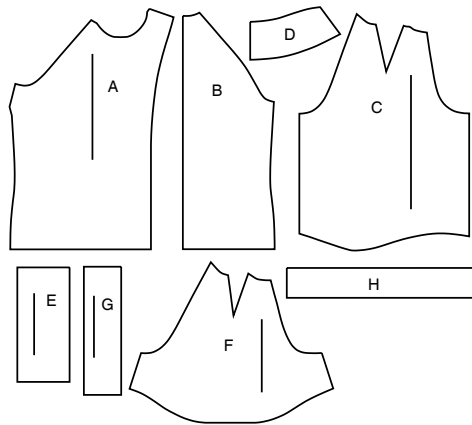
For Finishing, see Blouse View 1.



Thank you for purchasing this Simplicity pattern. We made every effort to provide you with a high quality product.

SUPPLEMENTAL CUTTING LAYOUTS

8 PIECES



A BLOUSE FRONT
B BLOUSE BACK
C SLEEVE-VIEW 1
D COLLAR-VIEW 1,2
E SLEEVE BAND-VIEW 1
F SLEEVE-VIEW-2,3
G SLEEVE BAND-VIEW 2,3
H TIE COLLAR-VIEW 3

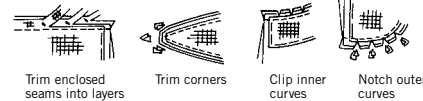
General Directions

The Pattern

SYMBOLS: GRAIN LINE, PLACE SOLID LINE, CENTER FRONT OR BACK, NOTCHES, DOTS, CUTTING LINE, LENGTHEN OR SHORTEN LINES. ADJUST IF NEEDED: TO LENGTHEN, TO SHORTEN. BEFORE CUTTING: PRESS, PIN, CIRCLE. AFTER CUTTING: Transfer markings, To Quick Mark. SEAM ALLOWANCE: 5/8" (1.5cm) unless otherwise stated...

Sewing

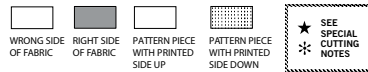
- SEW garment following Sewing Directions.
PIN or machine-baste seams matching notches.
STITCH 5/8" (1.5 cm) seams unless otherwise stated.
PRESS seams open unless otherwise indicated...
TRIM seams to reduce bulk...



Cutting/Marking

BEFORE CUTTING: PRESS, PIN, CIRCLE. AFTER CUTTING: Transfer markings, To Quick Mark. SPECIAL CUTTING NOTES: If layout shows a piece extending past fold... Mark small arrows along both selvages... Turn one fabric layer around so arrows on both layers go in the same direction...

Cutting Layouts

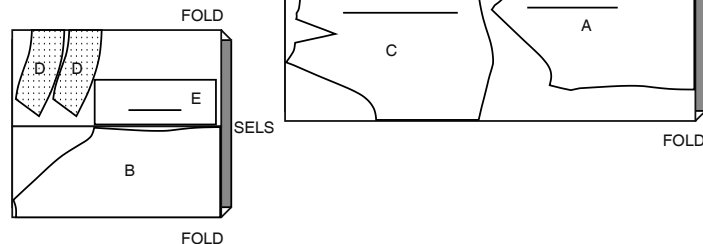


POSITION OF PATTERN PIECES MAY VARY SLIGHTLY ACCORDING TO YOUR PATTERN SIZE

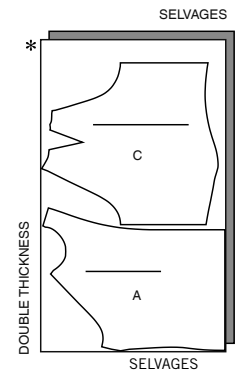
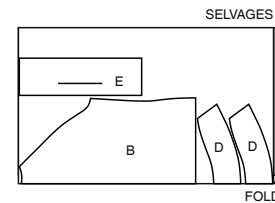
BLOUSE 1

USE PIECES A B C D E

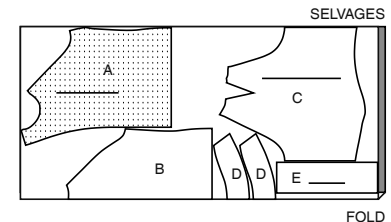
45" (115CM) WITH NAP
SIZES 6 8 10 12 14 16



45" (115CM) WITH NAP
SIZES 18 20 22



60" (150CM) WITH NAP
ALL SIZES



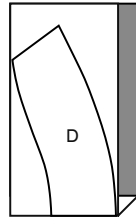
CUTTING LAYOUTS CONTINUED ON PAGE 2

INTERFACING 1,2

USE PIECE D

20" (51CM)
ALL SIZES

SELVAGES



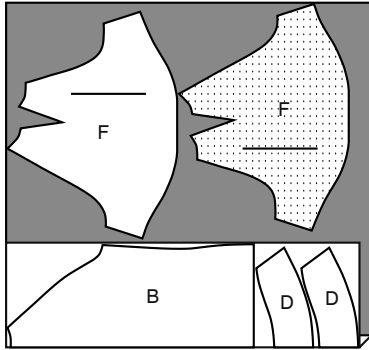
FOLD

BLOUSE 2

USE PIECES A B D F G

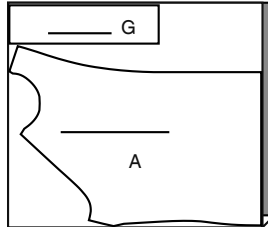
45" (115CM)
WITH NAP
SIZES 6 8 10 12 14

SELVAGE



FOLD

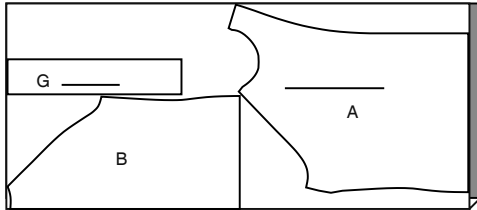
SELVAGES



FOLD

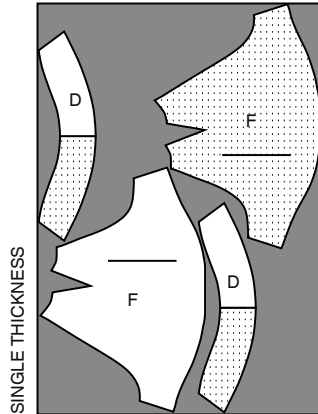
45" (115CM)
WITH NAP
SIZES 16 18 20 22

SELVAGES



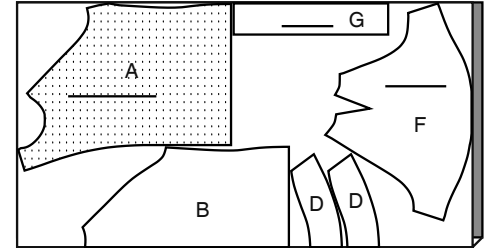
FOLD

SELVAGE



SELVAGE

SELVAGES



FOLD

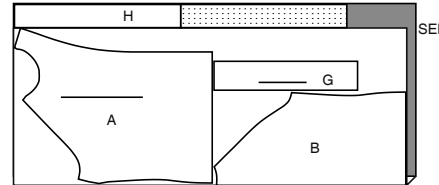
60" (150CM)
WITH NAP
ALL SIZES

BLOUSE 3

USE PIECES A B F G H

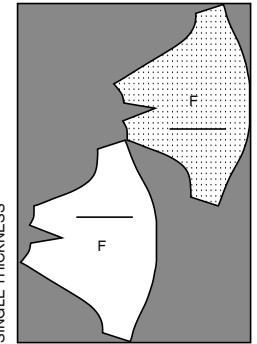
45" (115CM)
WITH NAP
ALL SIZES

SELVAGE



FOLD

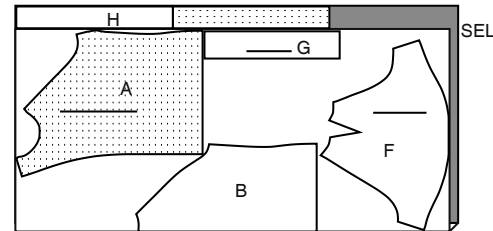
SELVAGE



SELVAGE

60" (150CM)
WITH NAP
ALL SIZES

SELVAGE



FOLD



Congrats!

You've completed your sewing adventure

**SHARE
YOUR** LOOK



Post your pattern and tag us
@simplicity_creative_group and **#simplicitypatterns**
for a chance to be featured on our social media.

Look for more PDF patterns at **simplicity.com**

Have a question or need help with your sewing project call us at
1-888-588-2700



Simplicity ©2023 a division of IG Design Group Americas Inc. • Atlanta, GA 30342 USA www.thedesigngroup.com • All Rights Reserved. www.simplicity.com • Made in the U.S.A. Fabriqué aux États-Unis.

To be used for individual private home use only and not for commercial or manufacturing purposes. • A usage privé seulement et non à des fins commerciales ou de production en série. • Para uso privado solamente, no se puede utilizar con propósitos de comercialización o de producción en serie.