

S9816

Simplicity

5780 Simplicity 1970s Vintage



easy-to-sew



Easy

MISSES' BLOUSE AND SKIRTS

Suggested Fabrics: Broadcloth, Canvas, Challis, Cotton Sateen, Crepe, Double Knit, Homespun, Leno, Lightweight Wool, Linen, Muslin, Poplin, Surah, Wool Flannel. **Blouse** also in Batiste, Dotted Swiss, Eyelet, Printed Voile. **Skirt View 2** also in Even Lengthwise Striped Fabric. **Interfacing:** Lightweight Sew-in.

Notions: View 1, View 2: Seam binding or stretch lace. **Blouse View 1,2:** One pkg. of ½" (1.3cm) single fold bias tape, ¼ yd. (0.7m) of ¾" (1cm) elastic. **Skirt View 1,2:** One 7" (18cm) zipper, hooks and eyes. **Also for Skirt View 1:** 5½ yds. (5.2m) of 1¼" (4.5cm) embroidered braid or ribbon trim. **Also for Skirt View 2:** 2 yds. (1.9m) of 2½" (6.3cm) ribbon trim for tie belt.

Sizes	S	M	L	XL
	8-10	12-14	16-18	20-22
European	34-36	38-40	42-44	46-48

BODY MEASUREMENTS: Select pattern size based on body measurements

Bust	31½-32½	34-36	38-40	42-44	Ins.
Waist	24-25	26½-28	30-32	34-37	"
Hip-9" below waist	33½-34½	36-38	40-42	44-46	"
Back-neck to waist	15¾-16	16¼-16½	16¾-17	17¼-17½	"

Blouse Views 1,2

45"*	3%	3%	3¼	3¼	Yds.
60"*	2%	2¼	2¼	2¼	"

Skirt View 1	45"*	4%	4%	4%	4%	Yds.
	60"*	3%	3%	3%	4%	"

Interfacing Views 1,2

20"	1	1½	1¼	1¼	Yds.
-----	---	----	----	----	------

Skirt View 2	45"*	3	3	3	3	Yds.
	60"*	2%	2%	3	3	"

NOTE: Please refer to the sewing instructions for **FINISHED GARMENT MEASUREMENTS.**

*with nap **without nap

Facile

CHEMISIER ET JUPES POUR JEUNES FEMMES

Tissu Conseillés: Broadcloth, Canevas, Challis, Satin de coton, Crêpe, Tricot double, Tissu homespun, Tissu Leno, Laine légère, Toile de lin, Mousseline, Popeline, Tissu surah, Flanelle de laine. **Chemisier** aussi en Batiste, Plumetis, Broderie anglaise, Voile imprimé. **Jupe Modèle 2** aussi en Tissu à rayures uniformes dans le sens de la longueur. **Entoilage:** léger à coudre.

Mercerie: Modèle 1, Modèle 2: extra-fort ou dentelle extensible. **Chemisier Modèles 1,2:** 1 paquet de ruban de biais simple de 1.3cm, 0.7m d'élastique de 1cm. **Jupe Modèles 1,2:** 1 fermeture à glissière de 18cm, agrafes. **Aussi pour Jupe Modèle 1:** 5.2m de galon tressé brodé ou galon de ruban de 4.5cm. **Aussi pour Jupe Modèle 2:** 1.9m de galon de ruban de 6.3cm pour la ceinture nouée.

Tailles	P/S	M/M	G/L	T6/XL
Françaises	36-38	40-42	44-46	48-50
Européen	34-36	38-40	42-44	46-48

MESURES DU CORPS: Choisissez la taille du patron basée sur les mesures du corps

Poitrine	80-83	87-92	97-102	107-112	cm
Taille	61-64	67-71	76-81	87-94	"
Hanches (23cm au-dessous de la taille)	85-88	92-97	102-107	112-117	cm
Dos du cou à la taille	40-40.5	41.5-42	42.5-43	44-44.5	"

Chemisier Modèles 1,2

115cm*	2.9	2.9	3.0	3.0	m
150cm*	1.9	2.1	2.1	2.1	"

Jupe Modèle 1	115cm*	3.7	3.7	3.7	3.7	m
	150cm*	3.3	3.3	3.3	3.7	"

Entoilage Modèles 1,2

51cm	0.9	1.0	1.0	1.1	m
------	-----	-----	-----	-----	---

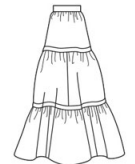
Jupe Modèle 2	115cm*	2.7	2.7	2.7	2.7	m
	150cm*	2.2	2.2	2.7	2.7	"

NOTE: S'il vous plaît, reportez-vous aux instructions de couture pour les **MESURES DU VÊTEMENTS FINI.**

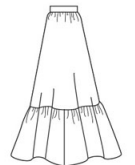
*avec sens **sans sens



1,2



1



2

5780 sewing directions

Shaded area is right side of fabric

The metric equivalent for inches is in parenthesis: 1/8" (3mm), 1/4" (6mm), 1/2" (1.2cm), 5/8" (1.5cm), 1" (2.5cm), 2" (5cm).

NOTE: Stitch 5/8" seams, unless otherwise stated, matching same numbered notches.

FOLLOW THESE FEW SIMPLE RULES FOR KNIT FABRICS:

Use loose but balanced tension and 10 to 12 stitches per inch (2.5cm).

Use nylon or polyester thread and a fine needle. For zig-zag machine, stitch seams with a narrow zig-zag stitch.

To prevent shoulder seams from stretching, baste center of straight seam binding along seam line on front shoulder edges, before stitching shoulder seams. Finish hems, by stitching 1/4" from inner edges and pinking them.

NOTE: To gather, stitch along seam line and 1/4" INSIDE seam line using a long machine-stitch.



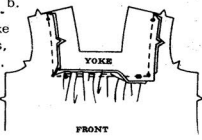
blouse

UNIT 1 front and yoke front



a—To reinforce inner corners of front, stitch along seam line for 1" each side of small dot, stitching thru small dot, as shown. Clip to small dots at reinforced inner corners. Gather upper edge of front between medium dots.

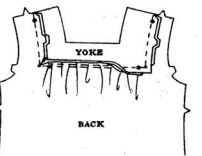
b—With RIGHT sides together, pin front to yoke front, matching centers, small and medium dots. Pull up machine-stitching in front to fit yoke. Baste. Stitch. Trim seam; press toward yoke. Seam may be top-stitched.



UNIT 2 back and yoke back

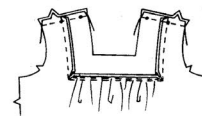
Reinforce and clip inner corners of back at small dots same as for front.

Gather upper edge between medium dots. With RIGHT sides together, pin back to yoke back, matching centers, small and medium dots. Pull up machine-stitching in back to fit yoke. Baste. Stitch. Trim seam; press toward yoke. Seam may be top-stitched.



shoulder seams

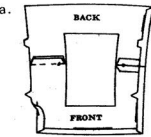
Stitch front to back at shoulder seams, matching small dots.



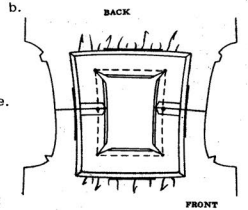
UNIT 3 yoke front and back facings

a—Stitch shoulder seams of facings, matching small dots.

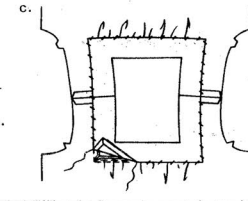
Press under 5/8" on all edges of facing; trim to 1/4".



b—With RIGHT sides together, pin facing to yoke, matching centers and small dots. Stitch neck edge. To reinforce inner corners, stitch over first stitching. Trim seam; clip to small dots at reinforced inner corners.

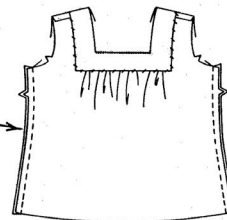


c—Press facing to INSIDE; slip-stitch pressed edge over seam.



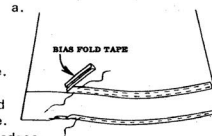
side seams

Stitch front to back at side seams.



UNIT 4 sleeves

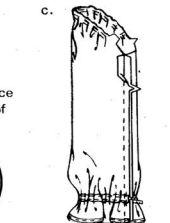
a—Narrowly hem lower edge of sleeve. To form casing on INSIDE, pin bias fold tape along solid line. Stitch close to both edges.



b—Cut two pieces of elastic, each the person's wrist measurement, plus 2". Insert elastic thru casing; adjust to fit. Stitch ends to sleeves.



c—Gather top of sleeve between notches. Stitch underarm seam.



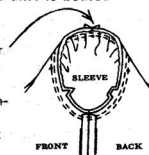
Stitch under seam allowance diagonally at lower edge of sleeve.



ENLARGED DETAIL

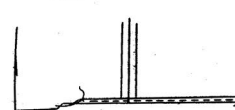
stitching sleeve unit to bodice

With RIGHT sides together, pin sleeve in armhole with center small dot at shoulder seam, matching underarm seams and remaining small dots. Pull up machine-stitching to fit. Baste. Stitch. Stitch again 1/8" from first stitching. Trim seam close to stitching. Press seam toward sleeve.



hem

Narrowly hem lower edge of blouse.

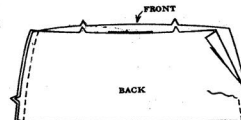


skirt

NOTE: Determine finished length of skirt before sewing.

UNIT 1 upper skirt front and back

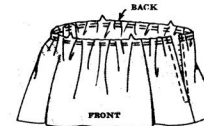
Stitch front to back at sides, leaving LEFT side open above notch for zipper.



Zipper - See instructions given with zipper placing tab end 1/2" below waistline seam line.

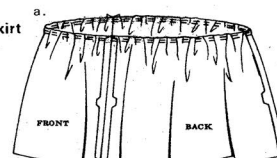
gathers

Gather waistline edge of skirt.

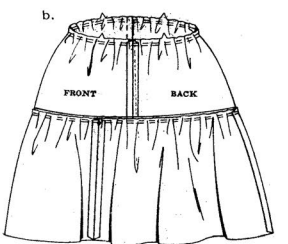


UNIT 2 middle skirt front and back

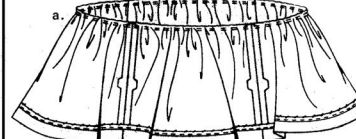
a—Stitch seams of middle skirt sections. Gather entire upper edge.



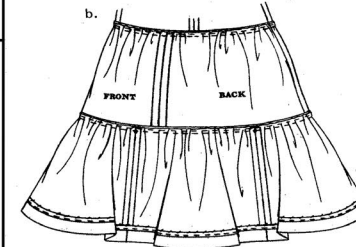
b—With RIGHT sides together, pin middle skirt to upper skirt, matching centers, placing remaining seams at small dots in front. Pull up machine-stitching in middle skirt to fit upper skirt; baste. Stitch. Trim seam; press up.



UNIT 3 lower skirt



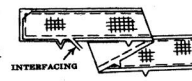
a—Stitch seams of lower skirt sections, as shown. Press lower edge to INSIDE along fold line for hem. Stitch one edge of seam binding or stretch lace 1/4" over raw edge. Slip-stitch hem. Gather entire upper edge.



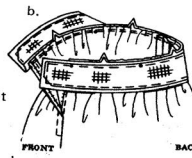
b—With RIGHT sides together, pin lower skirt to middle skirt, placing seams at small dots in front and back. Pull up machine-stitching in lower skirt to fit middle skirt; baste. Stitch. Trim seam; press up.

UNIT 4 waistband

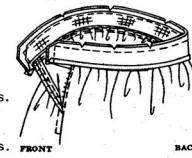
a—Pin interfacing to WRONG side of waistband. Trim outer corners of interfacing diagonally, as shown. Machine-baste interfacing 1/2" from raw edges. Trim interfacing close to stitching.



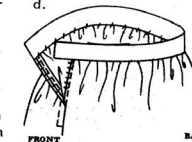
b—With RIGHT sides together, pin band to skirt, matching centers and small dots. Pull up machine-stitching in skirt to fit waistband; baste. Stitch. Trim seam. Press band out. Press seam toward band.



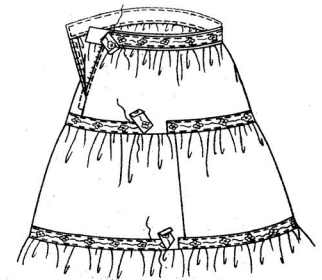
c—Press under 5/8" on notched edge of waistband facing. Trim to 1/4". With RIGHT sides together, pin facing to band matching centers. Stitch ends and upper edge, as shown. Trim seam and corners. Clip curves.



d—Press facing to INSIDE; slip-stitch pressed edge of facing along seam, slip-stitching pressed edge on LEFT end together. Lap ends, fasten with hooks and eyes, when skirt is finished.



embroidered braid or ribbon trim



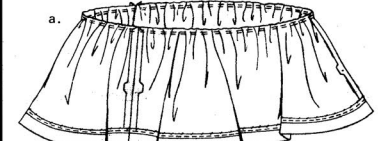
Pin trim to waistband, centering it, turning under ends, as shown. Stitch close to all edges of trim. Pin trim to upper and middle skirt, placing one edge along seam, turning under and lapping one end at center back. Stitch close to both edges.



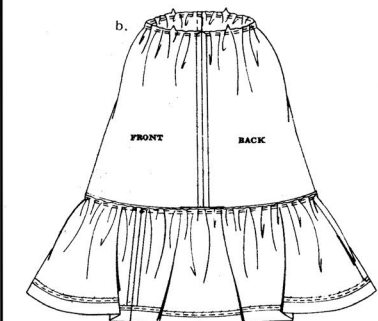
skirt

Prepare skirt same as view 1, see NOTE and unit 1.

UNIT 2 lower skirt



a—Stitch seams of lower skirt sections, as shown. Press lower edge to INSIDE along fold line for hem. Stitch one edge of seam binding or stretch lace 1/4" over raw edge. Slip-stitch hem. Gather entire upper edge.



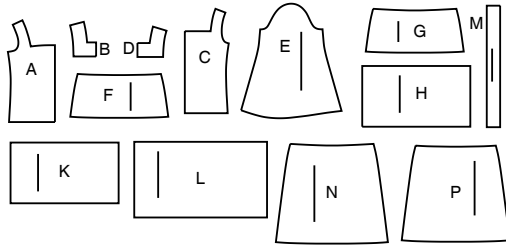
b—With RIGHT sides together, pin lower skirt to upper skirt, placing one seam at center back and remaining seams at small dots in front. Pull up machine-stitching in lower skirt to fit upper skirt; baste. Stitch. Trim seam; press up. Complete skirt same as view 1, see unit 4, omitting embroidered braid or ribbon trim. A ribbon tie belt may be worn at waistline, as shown on front of envelope.

Simplicity®

Thank you for purchasing this Simplicity pattern. We made every effort to provide you with a high quality product.

SUPPLEMENTAL CUTTING LAYOUTS

13 PIECES



- A FRONT
- B YOKE FRONT
- C BACK
- D YOKE BACK
- E SLEEVE
- F UPPER SKIRT FRONT-VIEW 1
- G UPPER SKIRT BACK-VIEW 1
- H MIDDLE SKIRT FRONT-VIEW 1
- K MIDDLE SKIRT BACK-VIEW 1
- L LOWER SKIRT-VIEW 1,2
- M WAISTBAND-VIEW 1,2
- N UPPER SKIRT BACK-VIEW 2
- P UPPER SKIRT FRONT-VIEW 2

The Pattern General Directions Cutting/Marking

SYMBOLS

- ↔ GRAIN LINE Place on straight grain of fabric parallel to selvage
- ▭ PLACE SOLID LINE on fold of fabric.
- CENTER FRONT OR BACK of garment.
- ∇ NOTCHES
- ○ DOTS
- CUTTING LINE
- == LENGTHEN OR SHORTEN LINES

ADJUST IF NEEDED

Make adjustments before placing pattern on fabric.

TO LENGTHEN: Cut pattern between lengthen or shorten lines. Spread pattern evenly, the amount needed and tape to paper.

TO SHORTEN: At lengthen or shorten lines, make an even pleat taking up amount needed. Tape in place.

When lengthen or shorten lines are not given, make adjustments at lower edge of pattern.

BEFORE CUTTING: PRESS pattern pieces with a warm dry iron. PRE-SHRINK fabric by pre-washing washables or steam-pressing non-washables. CIRCLE your cutting layout. PIN pattern to fabric as shown in Cutting Layouts.

AFTER CUTTING: Transfer markings to WRONG side of fabric before removing pattern. Use pin and chalk method or dressmaker's tracing paper and wheel.

To Quick Mark:

- Snip edge of fabric to mark notches, ends of fold lines and center lines.
- Pin mark dots.

SEAM ALLOWANCE: 5/8" (1.5cm) unless otherwise stated is included but not printed on MULTI-SIZE PATTERNS. Mark your size with colored felt tip pen. See chart on tissue for how to use MULTI-SIZE PATTERNS.

Sewing

- SEW garment following **Sewing Directions**.
- PIN or machine-baste seams matching notches.
- STITCH 5/8" (1.5 cm) seams unless otherwise stated.
- PRESS seams open unless otherwise indicated clipping when necessary so seams will lie flat.
- TRIM seams to reduce bulk, as shown below.

Trim enclosed seams into layers Trim corners Clip inner curves Notch outer curves

SPECIAL CUTTING NOTES

- ★ If layout shows a piece extending past fold, cut out all pieces except piece that extends.
- ✱ Mark small arrows along both selvages indicating direction of nap or design. Fold fabric crosswise with RIGHT sides together, and cut along fold (a).

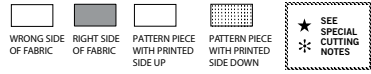
Open out fabric to single thickness. Cut extending piece on RIGHT side of fabric in position shown.

(a) SELVAGE, SELVAGES, CROSSWISE FOLD

(b) SELVAGES

Turn one fabric layer around so arrows on both layers go in the same direction. Place RIGHT sides together (b).

Cutting Layouts

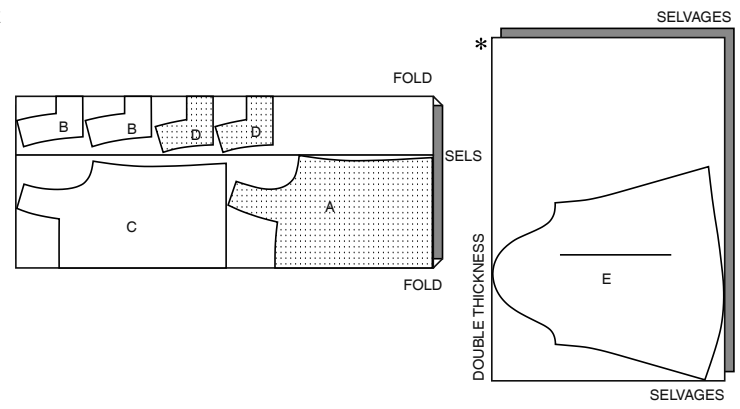


POSITION OF PATTERN PIECES MAY VARY SLIGHTLY ACCORDING TO YOUR PATTERN SIZE

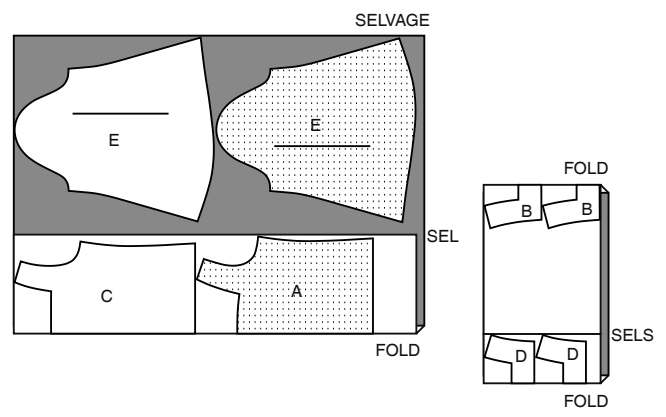
BLOUSE 1 OR 2

USE PIECES A B C D E

45" (115CM) WITH NAP ALL SIZES



60" (150CM) WITH NAP ALL SIZES



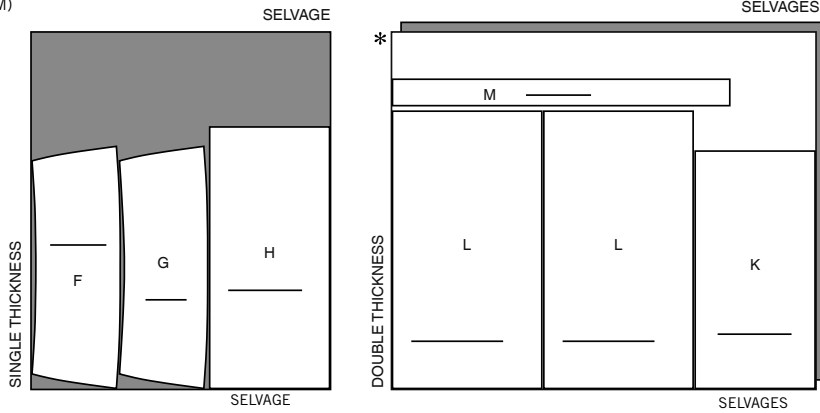
CUTTING LAYOUTS CONTINUED ON PAGE 2

S9816

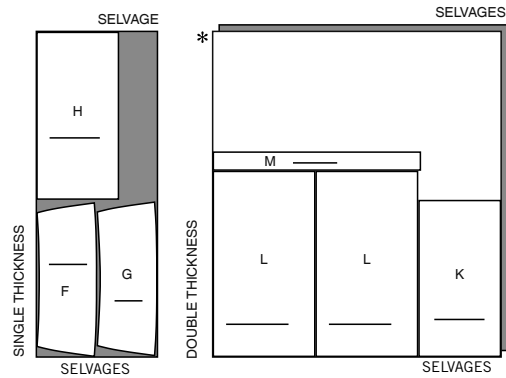
SKIRT 1

USE PIECES F G H K L M

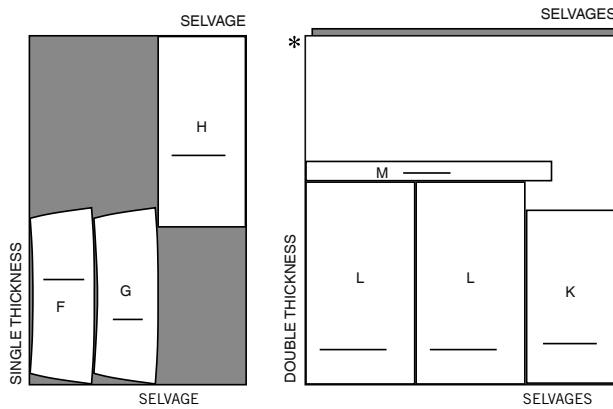
45" (115CM)
WITH NAP
ALL SIZES



60" (150CM)
WITH NAP
SIZES S M L



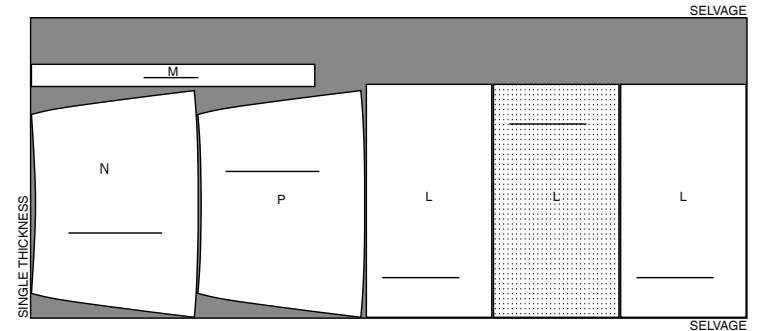
60" (150CM)
WITH NAP
SIZE XL



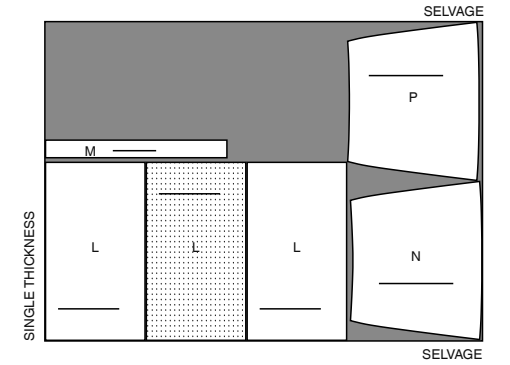
SKIRT 2

USE PIECES L M N P

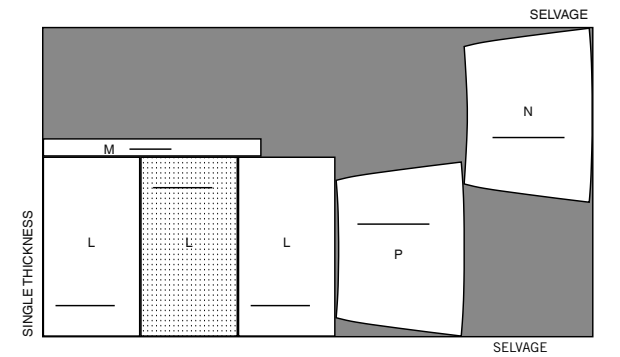
45" (115CM)
WITH NAP
ALL SIZES



60" (150CM)
WITH NAP
SIZES S M



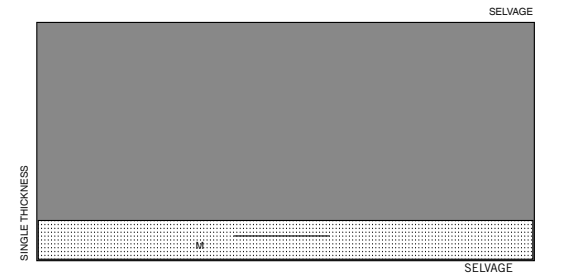
60" (150CM)
WITH NAP
SIZES L XL



INTERFACING 1 OR 2 (SKIRT)

USE PIECE M

20" (51CM)
ALL SIZES





Congrats!

You've completed your sewing adventure

**SHARE
YOUR** LOOK



Post your pattern and tag us
@simplicity_creative_group and **#simplicitypatterns**
for a chance to be featured on our social media.

Look for more PDF patterns at **simplicity.com**

Have a question or need help with your sewing project call us at
1-888-588-2700

Simplicity
by design™

Simplicity ©2023 a division of IG Design Group Americas Inc. • Atlanta, GA 30342 USA www.thedesigngroup.com • All Rights Reserved. www.simplicity.com • Made in the U.S.A. Fabriqué aux États-Unis.

To be used for individual private home use only and not for commercial or manufacturing purposes. • A usage privé seulement et non à des fins commerciales ou de production en série. • Para uso privado solamente, no se puede utilizar con propósitos de comercialización o de producción en serie.