

S9813

# Simplicity<sup>®</sup> COSTUMES



Shop all the pattern brands you love @

**Simplicity<sup>®</sup>.com**

Average



A



B



C

## MISSES' AND WOMEN'S COSTUMES

**Suggested Fabrics:** Brocade, Damask, Dupioni, Faux Leather, Gabardine, Satin, Taffeta, Velvet, Wool Types. **Contrast B** also in Lace, Mesh. **B Lining 2** also in Organza. **Lining A, B Lining 1, C:** Lining Fabric. **Interfacing:** Lightweight Fusible.

**Notions:** A,B,C: ¼" (6mm) featherweight boning: 1½ yds. (1.5m) for sizes 10 12 14 16 18; 2 yds. (1.8m) for sizes 20W 22W 24W 26W 28W. **Also for A:** Fourteen ¾" (2cm) grommets with ¾" (1cm) opening, 2½ yds. (2.0m) of ¾" - ¾" (1cm - 1.5cm) ribbon. **Also for B:** Fourteen ¾" (2cm) grommets with ¾" (1cm) opening, 2½ yds. (2.0m) of ¾" - ¾" (1cm - 1.5cm) ribbon, two hooks and eyes. **Also for C:** Three 1¼" (3.2cm) metal buckles, nine ¼" (6mm) eyelets, two hooks and eyes.

Sizes	10	12	14	16	18	20W	22W	24W	26W	28W	
European	36	38	40	42	44	46	48	50	52	54	
<b>Costume A</b>	45**	4¾	4¾	4¾	4¾	4¾	5¾	5¾	5¾	5¾	Yds.
	115cm*	4.3	4.3	4.3	4.5	4.5	4.8	4.8	4.8	4.9	m
<b>Lining A</b>	45**	4	4	4	4	4	5	5	5	5	Yds.
	115cm**	3.5	3.7	3.7	3.7	3.8	4.7	4.7	4.7	4.8	m
<b>Interfacing A</b> 20"- 2½ yd. for sizes 10 12 14 16 18; 3¼ yds. for sizes 20W 22W 24W 26W 28W											
51cm- 2.4m for sizes 10 12 14 16 18; 3.0m for sizes 20W 22W 24W 26W 28W											
<b>Costume B</b>	45**	3¾	3¾	3¾	3¾	3¾	4	4	4	4	Yds.
	115cm*	3.1	3.2	3.2	3.3	3.3	3.5	3.5	3.5	3.7	m
<b>Contrast B (Front and Back Yokes, Sleeves and Collar)</b>											
	45**	1¾	1¾	1¾	1¾	1¾	1½	1½	1½	1½	Yds.
	115cm*	1.3	1.3	1.3	1.3	1.3	1.4	1.4	1.4	1.6	m
<b>B Lining 1 (Corset and Skirt)</b>											
	45**	2¾	2¾	2¾	2¾	2¾	3¾	4	4	4	Yds.
	115cm*	2.5	2.5	2.5	2.6	2.6	3.5	3.5	3.5	3.7	m
<b>B Lining 2 (Front and Back Yokes, Sleeves, Front Facings)</b>											
	45**	1¾	1¾	1¾	1¾	1¾	1¾	1¾	1¾	1¾	Yds.
	115cm*	1.3	1.3	1.4	1.4	1.4	1.5	1.5	1.6	1.7	m
<b>Interfacing B,C</b>											
20"- 2¾ for sizes 10 12 14 16 18; 3¼ for sizes 20W 22W 24W 26W 28W											
51cm- 2.5 for sizes 10 12 14 16 18; 3.0m for sizes 20W 22W 24W 26W 28W											
<b>Costume C</b>	45**	4¾	4¾	4¾	4¾	4¾	4¾	4¾	4¾	5	Yds.
	115cm*	4.0	4.0	4.0	4.0	4.1	4.3	4.3	4.3	4.6	m
<b>Contrast C (Corset, Corset Tabs and Sleeve Tabs)</b>											
	45**	¾	¾	¾	¾	¾	1	1	1	1	Yds.
	115cm*	0.8	0.8	0.8	0.8	0.8	1.0	1.0	1.0	1.0	m
<b>Lining C</b>	45"	4	4¾	4¾	4¾	4¾	5	5	5¼	5¼	Yds.
	115cm*	3.7	3.8	3.8	3.9	3.9	4.6	4.6	4.8	5.0	m

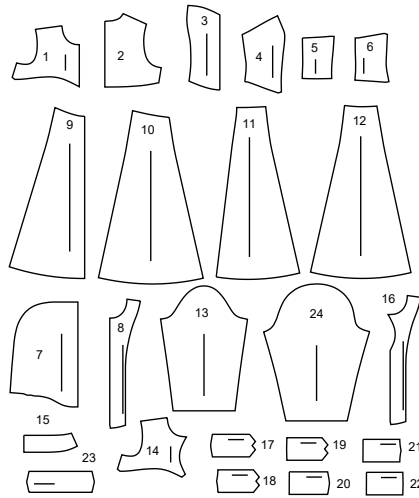
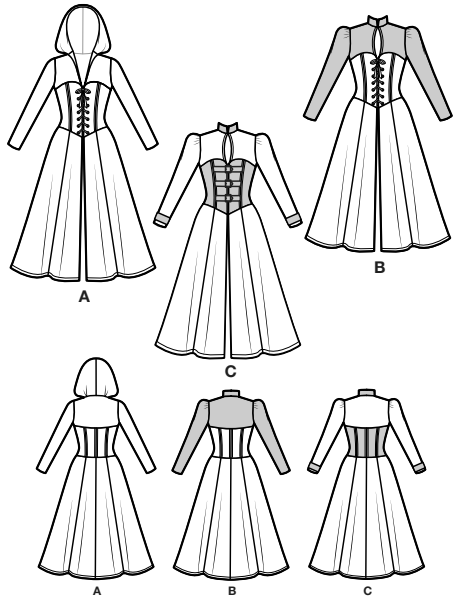
## FINISHED GARMENT MEASUREMENTS (Includes Design and Wearing Ease)

<b>A,B,C Bust</b>	35	36½	38½	40½	42½	43½	45½	47½	49½	51½	Ins.
	(89)	(93)	(98)	(103)	(108)	(110)	(116)	(121)	(126)	(131)	cm
<b>A,B,C Waist</b>	28	29½	31½	33½	35½	37	39	41	43	45	Ins.
	(71)	(75)	(80)	(85)	(90)	(94)	(99)	(104)	(109)	(114)	cm
<b>A,B,C Hip</b>	42½	44	46	48	50	54	56	58	60	62	Ins.
	(108)	(112)	(117)	(122)	(127)	(137)	(142)	(147)	(152)	(157)	cm
<b>Finished back length from base of neck</b>											
<b>Costume A,B,C</b>	47½	47¾	48	48¾	48¾	50¾	51	51¼	51½	51¾	Ins.
	(121)	(121)	(122)	(123)	(123)	(129)	(130)	(130)	(131)	(131)	cm

\*with nap \*\*without nap

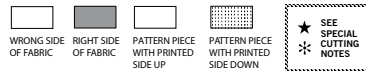
# Simplicity®

Thank you for purchasing this Simplicity pattern.  
We made every effort to provide you with a high quality product.



- |                             |                       |
|-----------------------------|-----------------------|
| 1 YOKE FRONT - A            | 13 SLEEVE - A         |
| 2 YOKE BACK - A,B,C         | 14 YOKE FRONT - B,C   |
| 3 BODICE FRONT - A,B,C      | 15 COLLAR - B,C       |
| 4 BODICE SIDE FRONT - A,B,C | 16 FRONT FACING - B,C |
| 5 BODICE BACK - A,B,C       | 17 TAB 1 - C          |
| 6 BODICE SIDE BACK - A,B,C  | 18 TAB 2 - C          |
| 7 HOOD - A                  | 19 TAB 3 - C          |
| 8 FRONT FACING - A          | 20 TAB 4 - C          |
| 9 SKIRT FRONT-A,B,C         | 21 TAB 5 - C          |
| 10 SKIRT SIDE FRONT - A,B,C | 22 TAB 6 - C          |
| 11 SKIRT BACK -A,B,C        | 23 SLEEVE TAB - C     |
| 12 SKIRT SIDE BACK - A,B,C  | 24 SLEEVE - B,C       |

## Cutting Layouts



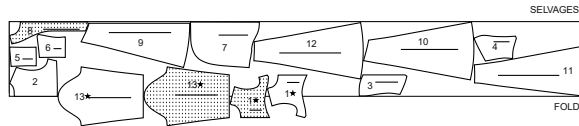
POSITION OF PATTERN PIECES MAY VARY  
SLIGHTLY ACCORDING TO YOUR PATTERN SIZE

**NOTE:** FOR LEATHER-LIKE FABRIC, ALTER TISSUE PATTERN BEFORE CUTTING. PLACE PINS WITHIN SEAM ALLOWANCE OR USE MASKING TAPE. DO NOT USE A TRACING WHEEL TO TRANSFER MARKING.

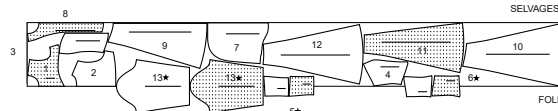
### COSTUME A

USE PIECES 1 2 3 4 5 6 7 8 9 10 11 12 13

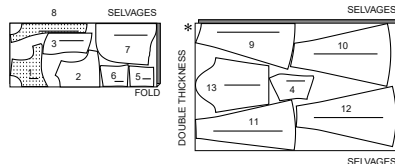
45" (115CM)  
WITH NAP  
SIZES 10 12 14 16 18



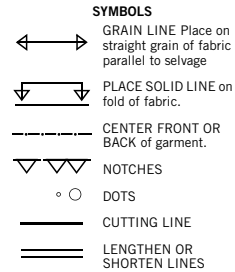
45" (115CM)  
WITH NAP  
SIZES 20W 22W 24W 26W



45" (115CM)  
WITH NAP  
SIZE 28W

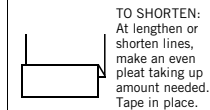
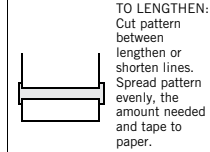


## The Pattern



SEAM ALLOWANCE: 5/8" (1.5cm) unless otherwise stated is included but not printed on MULTI-SIZE PATTERNS. Mark your size with colored felt tip pen. See chart on tissue for how to use MULTI-SIZE PATTERNS.

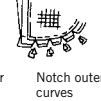
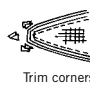
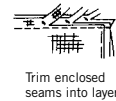
**ADJUST IF NEEDED**  
Make adjustments before placing pattern on fabric.



When lengthen or shorten lines are not given, make adjustments at lower edge of pattern.

## Sewing

- SEW garment following **Sewing Directions**.
- PIN or machine-baste seams matching notches.
- STITCH 5/8" (1.5 cm) seams unless otherwise stated.
- PRESS seams open unless otherwise indicated clipping when necessary so seams will lie flat.
- TRIM seams to reduce bulk, as shown below.



## General Directions

### Cutting/Marking

**BEFORE CUTTING:**  
PRESS pattern pieces with a warm dry iron. PRE-SHRINK fabric by pre-washing washables or steam-pressing non-washables.

CIRCLE your cutting layout.

PIN pattern to fabric as shown in Cutting Layouts.

• FOR DOUBLE THICKNESS: Fold fabric with RIGHT sides together.

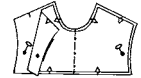
• FOR SINGLE THICKNESS: Place fabric RIGHT side up.

• FOR PILE, SHADED OR ONE WAY DESIGN FABRICS: Use "with nap" layouts

**AFTER CUTTING:**  
Transfer markings to WRONG side of fabric before removing pattern. Use pin and chalk method or dressmaker's tracing paper and wheel.

**To Quick Mark:**

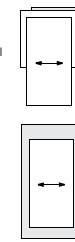
- Snip edge of fabric to mark notches, ends of fold lines and center lines.
- Pin mark dots.



### SPECIAL CUTTING NOTES

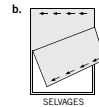
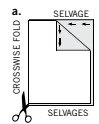
★ If layout shows a piece extending past fold, cut out all pieces except piece that extends.

Open out fabric to single thickness. Cut extending piece on RIGHT side of fabric in position shown.



✱ Mark small arrows along both selvages indicating direction of nap or design. Fold fabric crosswise with RIGHT sides together, and cut along fold (a).

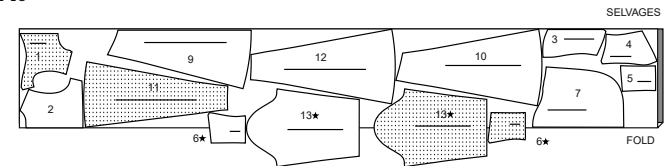
Turn one fabric layer around so arrows on both layers go in the same direction. Place RIGHT sides together (b).



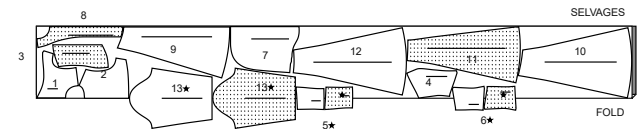
## LINING A

USE PIECES 1 2 3 4 5 6 7 9 10 11 12 13

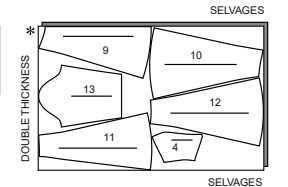
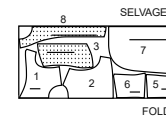
45" (115CM)  
WITHOUT NAP  
SIZES 10 12 14 16 18



45" (115CM)  
WITHOUT NAP  
SIZES 20W 22W 24W 26W



45" (115CM)  
WITHOUT NAP  
SIZE 28W



CUTTING LAYOUTS CONTINUED ON PAGE 2

**S9813**

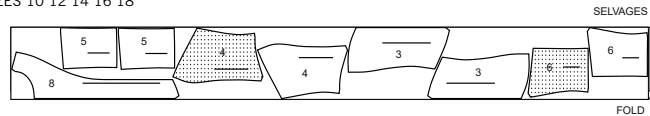
2 of 5

**INTERFACING A**

USE PIECES 3 4 5 6 8

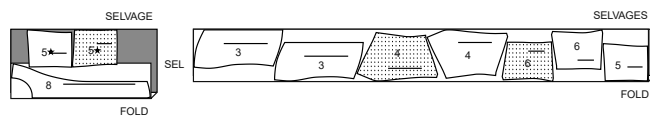
20" (51CM)

SIZES 10 12 14 16 18



20" (51CM)

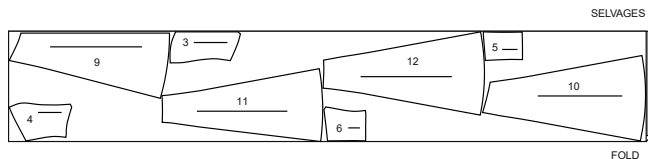
SIZES 20W 22W 24W 26W 28W

**COSTUME B**

USE PIECES 3 4 5 6 9 10 11 12

45" (115CM) WITH NAP

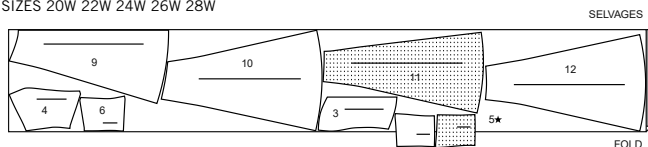
SIZES 10 12 14 16 18



45" (115CM)

WITH NAP

SIZES 20W 22W 24W 26W 28W

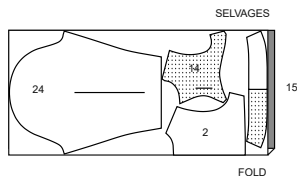
**CONTRST B (FRONT AND BACK YOKES, SLEEVES AND COLLAR)**

USE PIECES 2 14 15 24

45" (115CM)

WITH NAP

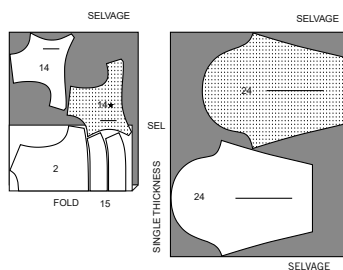
SIZES 10 12 14 16 18



45" (115CM)

WITH NAP

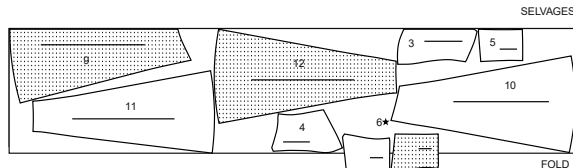
SIZES 20W 22W 24W 26W 28W

**B LINING 1 (CORSET AND SKIRT)**

USE PIECES 3 4 5 6 9 10 11 12

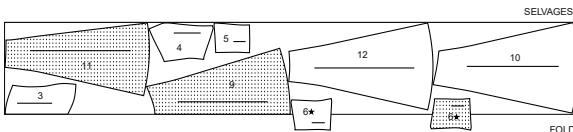
45" (115CM) WITHOUT NAP

SIZES 10 12 14 16 18



45" (115CM) WITHOUT NAP

SIZES 20W 22W 24W 26W 28W

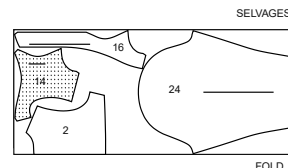
**B LINING 2 (FRONT AND BACK YOKES, SLEEVES FRONT FACINGS)**

USE PIECES 2 14 16 24

45" (115CM)

WITHOUT NAP

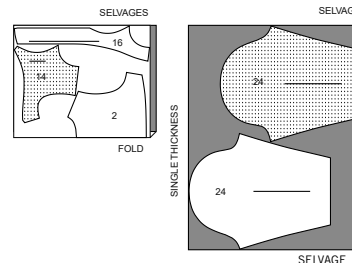
SIZES 10 12 14 16 18



45" (115CM)

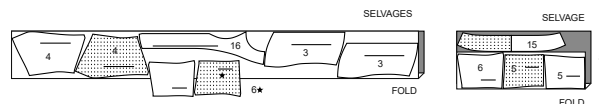
WITHOUT NAP

SIZES 20W 22W 24W 26W 28W

**INTERFACING B,C**

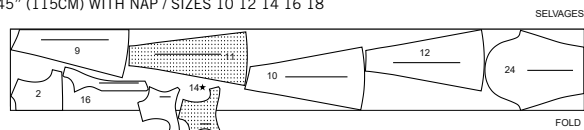
USE PIECE 3 4 5 6 15 16

20" (51CM) ALL SIZES

**COSTUME C**

USE PIECES 2 9 10 11 12 14 16 24

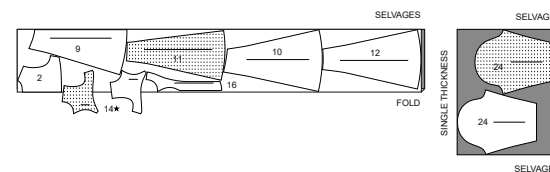
45" (115CM) WITH NAP / SIZES 10 12 14 16 18



45" (115CM)

WITH NAP

SIZES 20W 22W 24W 26W 28W

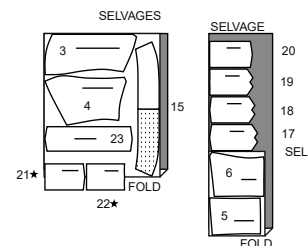
**CONTRAST C (CORSET, CORSET TABS AND SLEEVE TABS)**

USE PIECES 3 4 5 6 15 17 18 19 20 21 22 23

45" (115CM)

WITH NAP

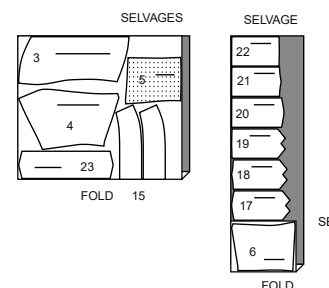
SIZES 10 12 14 16 18



45" (115CM)

WITH NAP

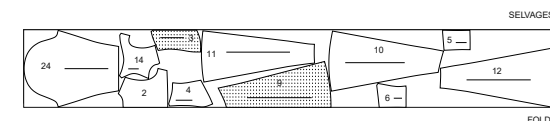
SIZES 20W 22W 24W 26W 28W

**LINING C**

USE PIECES 2 3 4 5 6 9 10 11 12 14 24

45" (115CM) WITHOUT NAP

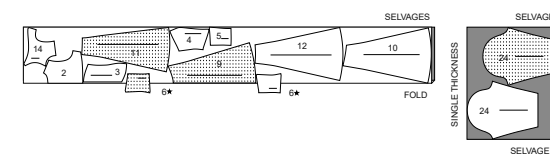
SIZES 10 12 14 16 18



45" (115CM)

WITHOUT NAP

SIZES 20W 22W 24W 26W 28W



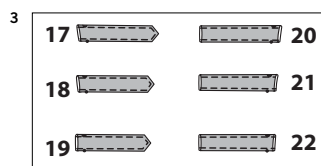
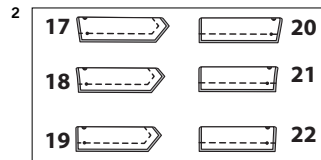
## SEWING TUTORIALS



Build your skills viewing short, easy-to-follow videos at [simplicity.com/sewingtutorials](http://simplicity.com/sewingtutorials)

## SEWING TECHNIQUES FOR SYNTHETIC SUEDE OR LEATHER-LIKE FABRICS

- Pin or baste seams within the seam allowance since pin holes remain in fabric.
- Basting tape, or fabric clips are other ideal methods to hold seam allowances together and avoid slipping of fabric.
- For machine-sewing, use medium but balanced tension and 10 to 12 stitches per inch (2.5cm). Use a size 11/12 leather needle and 100% polyester or polyester core thread.



## Sewing Directions

FABRIC KEY	RIGHT SIDE	WRONG SIDE	INTERFACING	LINING
------------	------------	------------	-------------	--------

Read **General Directions** on page 1 before you begin.

Sewing terms appearing in **BOLD TYPE** in Sewing Instructions have Sewing video tutorials available.

**EASE/GATHER** – See "Sewing two row Gathers" video

**EDGE STITCH** – See "How to Edgestitch" video

**FINISH** – See "How to Finish seam allowance" video

**NARROW HEM** – See "How to Sew Narrow Hem" video

**SLIPSTITCH** – See "How to Slipstitch" video

**STAY-STITCH** – See "How to Stay-stitch" video

**UNDERSTITCH** – See "How to Understitch" video

- When feeding fabric through machine, hold it "taut" in front of and behind the machine needle as you sew. DO NOT stretch.

- Press seams open with fingers or press on WRONG side with iron set at a low temperature setting and a press cloth. DO NOT USE A STEAM IRON. WE DO NOT RECOMMEND PRESSING ON RIGHT SIDE OF FABRIC. When pressing synthetic leather or vinyl, we recommend covering your ironing board and garment with brown paper to prevent melting

**PATTERN PIECES WILL BE IDENTIFIED BY NUMBERS THE FIRST TIME THEY ARE USED.**  
**STITCH SEAMS WITH RIGHT SIDES TOGETHER UNLESS OTHERWISE STATED.**

## COSTUME A, B OR C

**NOTE:** View C - See SEWING TECHNIQUES FOR SYNTHETIC SUEDE OR LEATHER-LIKE FABRICS.

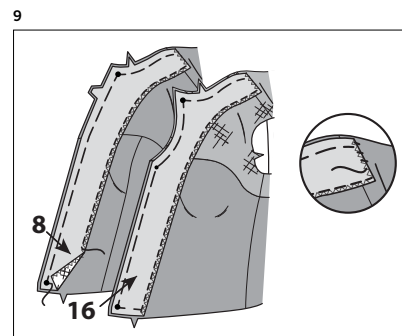
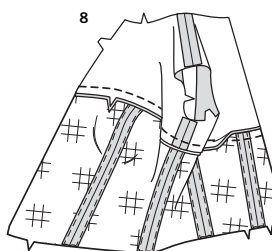
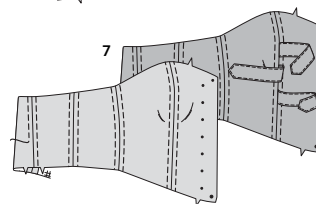
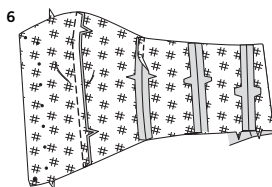
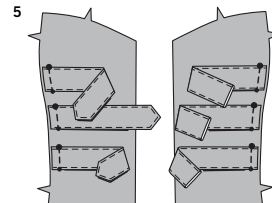
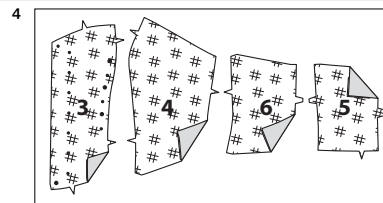
## YOKE A, B OR C

1. Stitch yoke front (1 or 14) to yoke back (2) at shoulder and sides. Stitch yoke front lining (1 or 14) to yoke back lining (2) at shoulder and sides. **STAYSTITCH** neck edges.  
**View A or C** - Press seams open.  
**View B** - Press shoulder seams toward back. Press side seams open.

## TABS C

2. To make tabs (17-19), fold tabs in half, with **RIGHT** sides together, having raw edges even. Stitch long and pointed edges leaving angled edge with small and large dots free. Trim corners and seams.  
To make tabs (20-22), fold tabs in half, with **RIGHT** sides together, having long edges even. Stitch, leaving short ends free.

3. Turn tabs **RIGHT** side out. **EDGE STITCH** finished edges.



## BODICE A, B OR C

4. **ALL VIEWS** – Apply **INTERFACING** to bodice front (3), bodice side front, bodice back (5) and bodice side back (6), following manufacturer's instructions.

5. **VIEW C** - Pin tabs 17 -19 as shown to **RIGHT** bodice front (3) matching large and small dots.  
Pin tabs 20 – 22 as shown to **LEFT** bodice front matching large and small dots.

6. **ALL VIEWS** - With **RIGHT** sides together, stitch bodice front to bodice side front. Stitch bodice back to bodice side back. Stitch front to back at side seams.

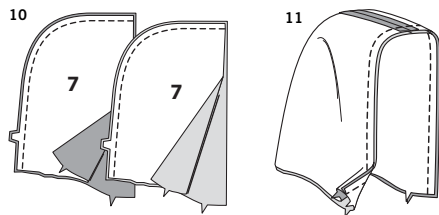
7. To make casings on bodice for boning, on **OUTSIDE**, stitch 3/8" (1cm) along sides of each seam, catching seam allowance underneath, (keeping tabs free on view C).

8. With **RIGHT** sides together, pin yoke to bodice matching centers, notches and side seams. Press seam toward bodice.  
Apply **INTERFACING** to Bodice lining sections. Stitch yoke lining to bodice lining in the same manner.

9. Apply **INTERFACING** to Front Facing (8 or 16). **FINISH** shoulder and inner edges of front facing. With **RIGHT** sides up, pin front facing to yoke/bodice lining section, matching dots and notches, having front and neck edges even (shoulder edge will extend 5/8" (1.5cm) beyond shoulder seams).  
Baste lower, front and neck edges. Stitch inner edge of facing to yoke /bodice lining.  
**SLIPSTITCH** shoulder edge to lining.

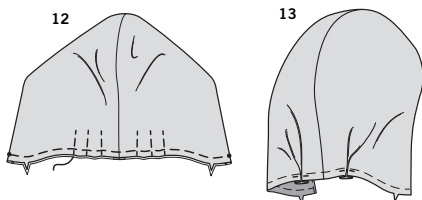


## HOOD A



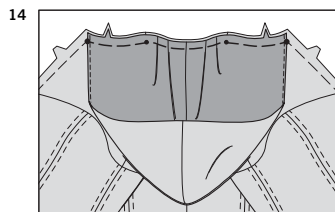
**10.** Stitch center back seam of hood (7). Stitch center back seam of hood lining (7). Press.

**11.** With RIGHT sides together, pin front edge of hood to hood lining, matching seams. Stitch front. **UNDERSTITCH** lining. Press.

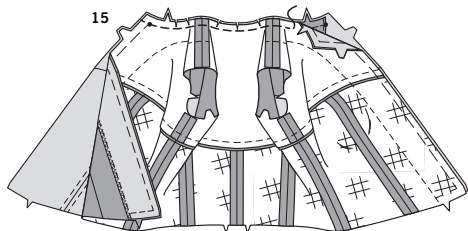


**12.** Turn hood RIGHT side out; press. Baste lower edges together. Baste hood and lining together along solid and broken pleat lines to keep fabric from shifting.

**13.** To make pleats on each side of hood, on OUTSIDE, bring solid lines to broken line in direction of arrows; pin. Baste across lower edge.

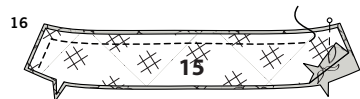


**14.** With RIGHT sides together, pin hood to yoke, matching large dots, center back, and placing small dot at shoulder seam. Baste.

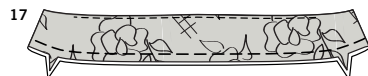


**15.** Pin neck edge of yoke lining to yoke (over hood), matching large dots, center back, and placing shoulder seam at small dot. Stitch neck edge, clipping neck edge as necessary.

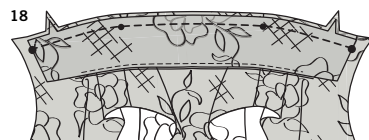
## COLLAR B, C



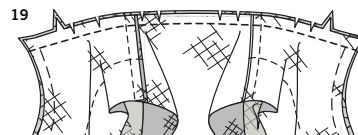
**16.** Apply INTERFACING to collar (15). With RIGHT sides together, pin collar to collar facing. Stitch front ends and upper edge. Trim seam and corners.



**17.** Turn RIGHT side out. **UNDERSTITCH** upper edge of collar facing as far as possible. Press.

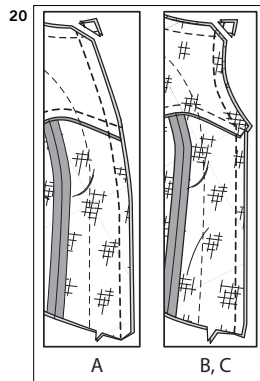


**18.** With RIGHT sides together, pin collar to yoke, matching large dots, center back, and placing small dot at shoulder seam. Baste.



**19.** Pin neck edge of yoke lining to yoke (over collar), having raw edges even; placing shoulder seam at small dot. Stitch neck edge, clipping seam allowance as necessary.

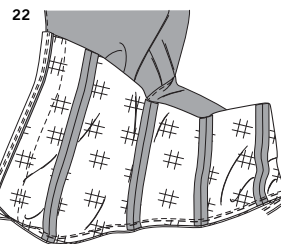
## ALL VIEWS



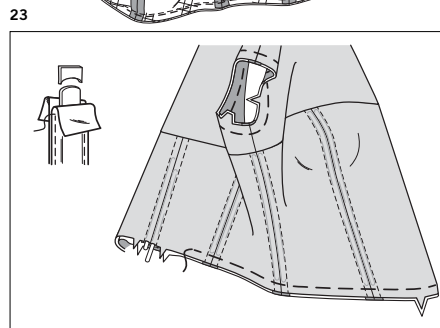
**20.** Stitch lining to yoke/bodice along center front. Trim. **UNDERSTITCH** neckline and front as far as possible.



**21.** Turn RIGHT side out. Press.  
**VIEW B, C**—On OUTSIDE, topstitch front of yoke along curve.

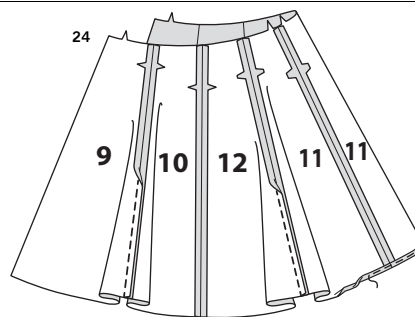


**22. VIEW A, B, C** - Lift bodice sections over yoke. On underside, pin seam allowances of yoke/bodice sections, matching seams; with linings WRONG sides together. Stitch close to previous stitching within seam allowances as shown.



**23.** Cut two strips of boning per bodice seam, the length of the seam, minus 1/2" (1.3cm). Remove boning from casing. Trim 1/4" (6mm) of boning from each end, curving ends, as shown. Insert corresponding boning through seam allowance casing openings along lower edge of bodice. Baste across lower edge of bodice and armhole edges of yoke.

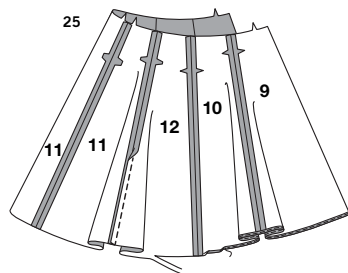
## SKIRT A, B OR C



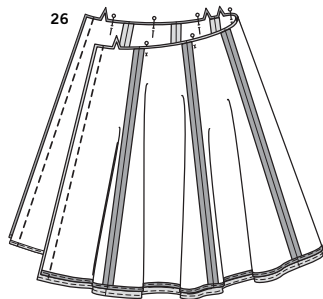
**24.** Stitch skirt front (9) to skirt side front (10) matching notches. Stitch skirt back (11) to skirt side back (12) matching notches. Stitch center back seam. Stitch front to back at side seams. **NARROW HEM** lower edge. Press.

S9813

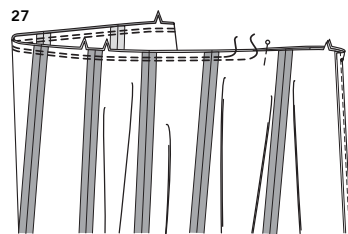
5 of 5



**25.** Stitch skirt lining sections in the same manner as the skirt. Trim away 5/8" (1.5cm) hem allowance. **NARROW HEM** lower edge. Press.



**26.** With **RIGHT** sides together, pin upper edges skirt to lining; matching seams, having front and upper edges even. Stitch center front seams (Note: Lining will be 5/8" (1.5cm) shorter than skirt). **UNDERSTITCH** lining. Press.



**27.** Unpin upper edges of skirt and lining. Insert bodice between the skirt and skirt lining layers. With **RIGHT** sides together, pin upper edge of skirt to lower edge of bodice, and upper edge of skirt lining to lower edge of bodice lining, matching large dots, notches and seams. Stitch. Stitch again 1/8" (3mm) from first stitching, within seam allowance. Turn garment **RIGHT** side out.

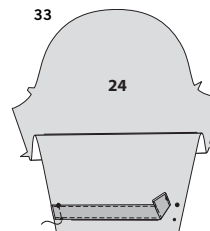
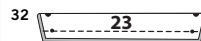
#### SLEEVE A

**28.** Stitch underarm seams of sleeve and sleeve lining (13).

**29.** With **RIGHT** sides together, pin lower edges of lining to sleeve, matching seams. **UNDERSTITCH** lining. Press.

**30.** Turn sleeve **RIGHT** side out. Baste lining to sleeve along armhole edge. **EASE** top of sleeve between notches.

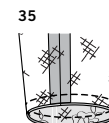
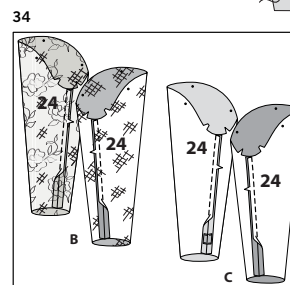
**31.** With **RIGHT** sides together, pin sleeve to armhole edge of garment with center small dot at shoulder seam, matching underarm seams, notches and remaining small dots. Pull up ease threads to fit, distributing fullness evenly. Baste. Stitch. Stitch again 1/8" (3mm) from first stitching. Trim seam allowance. **FINISH** seam.



#### SLEEVE B, C

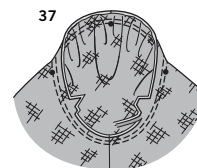
**32. VIEW C** - To make tab (23), fold tab in half, with **WRONG** sides together, having long edges even. Stitch, leaving short ends free.

**33.** Turn **RIGHT** side out. **EDGESTITCH** finished edges. Pin tab to lower edge of sleeve (24) matching small and large dots.



**34. VIEW B OR C** - Stitch underarm seams of sleeve (24) and sleeve lining (24).

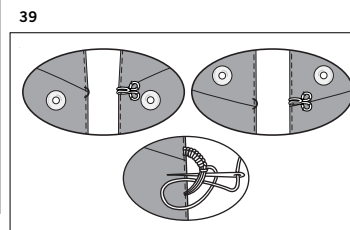
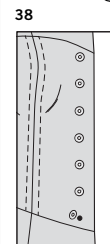
**35.** With **RIGHT** sides together, pin lower edge of lining to sleeve, matching seams. **UNDERSTITCH** lining. Press.



**36.** Turn sleeve **RIGHT** side out. Baste lining to sleeve along armhole edge. **GATHER** top of sleeve between outer small dots.

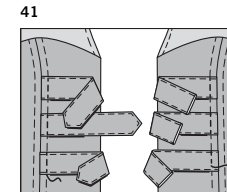
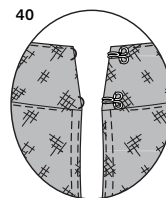
**37.** With **RIGHT** sides together, pin sleeve to armhole edge of garment with center small dot at shoulder seam, matching underarm seams, notches, and remaining small dots. Pull up gather threads to fit, distributing fullness evenly. Baste. Stitch. Stitch again 1/8" (3mm) from first stitching. Trim seam allowance. **FINISH** seam.

#### CLOSURES



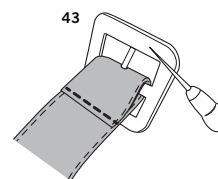
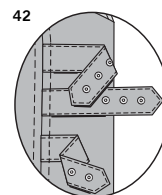
**38. VIEW A OR B** - Apply grommets to bodice front at large dots following manufacturer's instructions. Insert ribbon through grommets as shown on envelope.

**39.** Sew hook closures on **INSIDE** of **RIGHT** front at upper and lower seams of bodice. Make a thread loop on **INSIDE** of **LEFT** front at upper and lower seams of bodice.



**40. VIEW B, C** - Sew hook closures on **INSIDE** of upper and lower edges of collar. Make thread loops on opposite end as shown.

**41. VIEW C** - Turn tabs toward center front. Reinforce each by stitching across over previous casing stitching.



**42.** Apply grommets to **RIGHT** front tabs, following manufacturer's instructions.

**43.** Using an awl, punch hole at small dot of each **LEFT** front tab. Slip end of tab over bar of buckle, inserting prong through hole, turning end along foldline. Stitch close to end.



# Congrats!

You've completed your sewing adventure

---

## SHARE YOUR LOOK



Post your pattern and tag us  
**@simplicity\_creative\_group** and **#simplicitypatterns**  
for a chance to be featured on our social media.

Look for more PDF patterns at **simplicity.com**

Have a question or need help with your sewing project call us at  
1-888-588-2700



Simplicity ©2023 a division of IG Design Group Americas Inc. • Atlanta, GA 30342 USA [www.thedesigngroup.com](http://www.thedesigngroup.com) • All Rights Reserved. [www.simplicity.com](http://www.simplicity.com) • Made in the U.S.A. Fabriqué aux États-Unis.

To be used for individual private home use only and not for commercial or manufacturing purposes. • A usage privé seulement et non à des fins commerciales ou de production en série. • Para uso privado solamente, no se puede utilizar con propósitos de comercialización o de producción en serie.