

S9807

Simplicity®



easy-to-sew

Shop all the pattern brands you love @

Simplicity.com

Easy

24" (61CM) POSEABLE PLUSH ANIMALS**Suggested Fabrics:** Minky Fleece, Plush Fleece, Low Pile Faux Fur, Novelty Fleece.**Interfacing:** Lightweight Fusible. **Ear Interfacing A,B:** Felt.

Notions: A,B,C,D,E: Polyfiberfill, two 20mm safety eyes, one 1" (2.5cm) D-Ring, one 2 1/2" (6cm) wood tag with pre-drilled hole, one 1/2" (1.3cm) jump ring or split ring, 3/4 yd. (0.6m) of 1" (2.5cm) webbing, 7/8 yd. (0.8m) of 1" (2.5cm) flat trim, 1/4 yd. (0.2m) of 1" (2.5cm) hook and loop tape, rubber stamp and ink pad. **Also for A,E:** One 30mm safety nose. **Also for B,C,D:** One 25mm safety nose.

Dog Plush A

60"* - 1 yd. (150cm* - 0.9m)

Ear Interfacing A: 12" x 6" (30cm x 18cm) felt remnant**Contrast A,B Contrast 1 (Head Center Front, Lower Head Front):**

12 x 12 (30cm x 30cm) remnant

Interfacing A,B: 20" - 2 1/2 yds. (51cm - 2.3m)**Dog Plush B**

60"* - 1 yd. (150cm* - 0.9m)

Contrast 2 (Ears): 12" x 11" (30cm x 28cm) remnant**Contrast 3 (Inner Ears):** 12" x 11" (30cm x 28cm) remnant**Ear Interfacing B:** 12" x 11" (30cm x 28cm) remnant**Dog Plush C**

60"* - 1 yd. (150cm* - 0.9m)

Interfacing C: 20" - 2 3/4 yds. (51cm - 2.5m)**Dog Plush D**

60"* - 1 yd. (150cm* - 0.9m)

Interfacing D: 20" - 2 3/4 yds. (51cm - 2.5m)**Dog Plush E**

60"* - 1 yd. (150cm* - 0.9m)

Contrast (Head Front): 14" x 5" (36cm x 13cm) remnant**Interfacing E:** 20" - 2 3/4 yds. (51cm - 2.4m)

*with nap **without nap



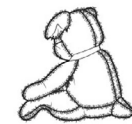
A



B



C



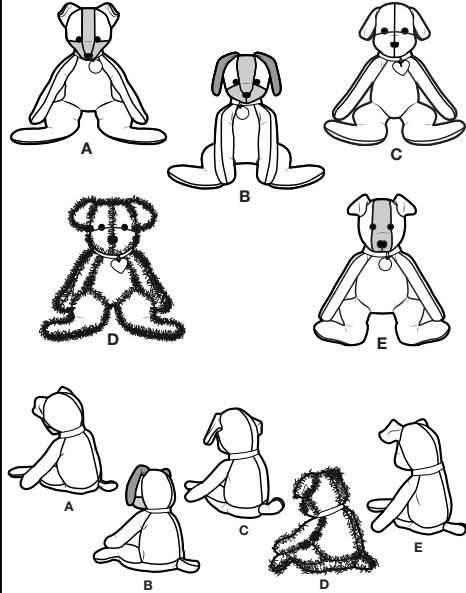
D



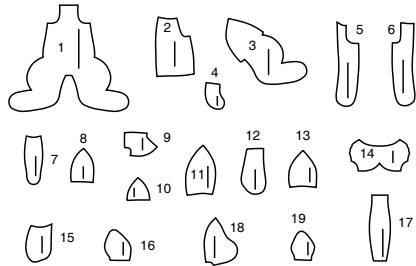
E

Simplicity® S9807

Thank you for purchasing this Simplicity pattern. We made every effort to provide you with a high quality product.

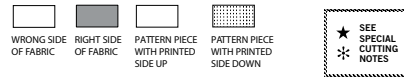


19 PIECES



- 1 BODY FRONT - A,B,C,D,E
- 2 UPPER BODY BACK - A,B,C,D,E
- 3 LOWER BODY BACK - A,B,C,D,E
- 4 TAIL - A,B,C,D,E
- 5 ARM FRONT - A,B,C,D,E
- 6 ARM BACK - A,B,C,D,E
- 7 HEAD CENTER FRONT - A,B
- 8 UPPER HEAD FRONT - A,B
- 9 LOWER HEAD FRONT - A,B
- 10 EAR - A
- 11 HEAD BACK - A,B,C,D,E
- 12 EAR - B
- 13 UPPER HEAD FRONT - C,D
- 14 LOWER HEAD FRONT - C,D
- 15 EAR - C
- 16 EAR - D
- 17 HEAD FRONT - E
- 18 HEAD SIDE FRONT - E
- 19 EAR - E

Cutting Layouts



POSITION OF PATTERN PIECES MAY VARY SLIGHTLY ACCORDING TO YOUR PATTERN SIZE

General Directions For Cutting

PRE-SHRINK and iron all fabric.

FOR DOUBLE THICKNESS -Fold fabric with **RIGHT** sides together. Pin pattern to **WRONG** side of fabric.

FOR SINGLE THICKNESS -Pin pattern to **RIGHT** side of fabric.

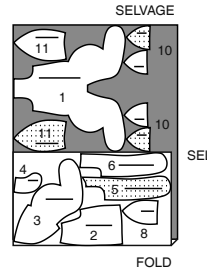
★ If layout shows a piece extending past fold, cut out all pieces except piece that extends. Open out fabric to single thickness. Cut extending piece on **RIGHT** side of fabric in position shown.

✱ Mark small arrows along both selvages in dictating direction of nap or design. Fold fabric crosswise with **RIGHT** sides together, and cut along fold. Turn one fabric layer around so arrows on both layers go in the same direction. Place **RIGHT** sides together.

DOG PLUSH A

USE PIECES 1 2 3 4 5 6 8 10 11

60" (150CM) WITH NAP



EAR INTERFACING A

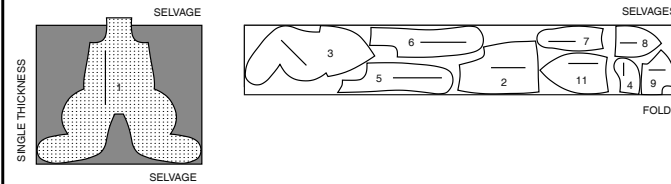
CUT TWO OF PIECE 10 FROM 6" X 12" (15CM X 30CM) FELT REMNANT.

CONTRAST A, B CONTRAST 1 (HEAD CENTER FRONT, LOWER HEAD FRONT)

CUT ONE OF PIECE 7, AND TWO OF PIECE 9 FROM 12" X 12" (30CM X 30CM) REMNANT.

INTERFACING A,B

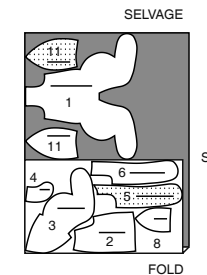
USE PIECES 1 2 3 4 5 6 7 8 9 11
CUT ONE OF PIECE 7
20" (51CM)



DOG PLUSH B

USE PIECES 1 2 3 4 5 6 8 11

60" (150CM) WITH NAP



CONTRAST 2 (EARS) OR CONTRAST 3 (INNER EARS)

CUT TWO OF PIECE 12 FROM 12" X 11" (30CM X 28CM) REMNANT.

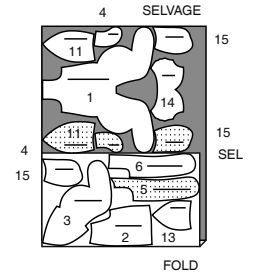
EAR INTERFACING B

CUT TWO OF PIECE 12 FROM 12" X 11" (30CM X 28CM) FELT REMNANT.

DOG PLUSH C

USE PIECES 1 2 3 4 5 6 11 13 14 15

60" (150CM) WITH NAP

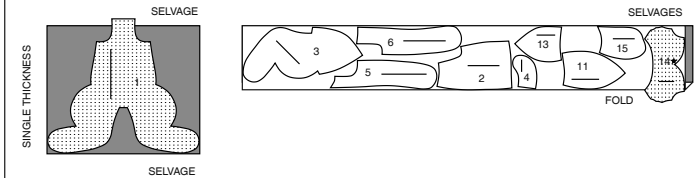


INTERFACING C

USE PIECES 1 2 3 4 5 6 11 13 14 15

20" (51CM)

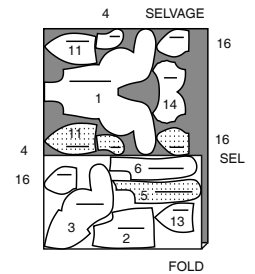
CUT REMAINING SECTION OF INTERFACING FROM YOUR INTERFACING REMNANT



DOG PLUSH D

USE PIECES 1 2 3 4 5 6 11 13 14 16

60" (150CM) WITH NAP

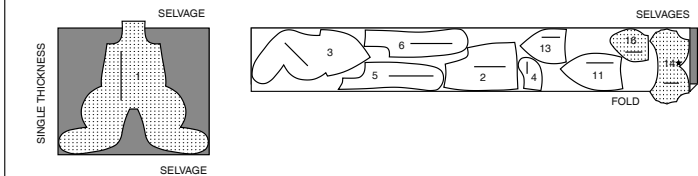


INTERFACING D

USE PIECES 1 2 3 4 5 6 11 13 14 16

20" (51CM)

CUT REMAINING SECTION OF INTERFACING FROM YOUR INTERFACING REMNANT

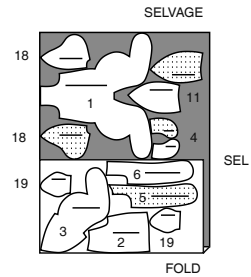


S9807

2 of 4

DOG PLUSH E

USE PIECES 1 2 3 4 5 6 11 18 19

60" (150CM)
WITH NAP

CONTRAST (HEAD FRONT)

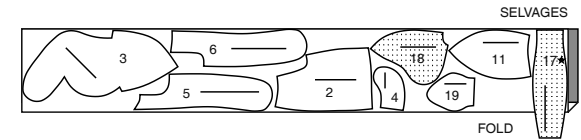
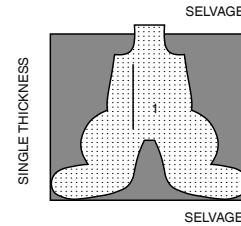
CUT ONE OF PIECE FROM 7 FROM 14" X 5" (36 CM X 13CM)
REMNANT

INTERFACING E

USE PIECES 1 2 3 4 5 6 11 17 18 19

20" (51CM)

CUT REMAINING SECTION OF INTERFACING FROM YOUR INTERFACING REMNANT



Sewing Directions

FABRIC KEY

RIGHT SIDE	WRONG SIDE	INTERFACING	LINING	LINING
------------	------------	-------------	--------	--------

Read **General Directions** on page 1 before you begin.

SIMPLY THE BEST TECHNIQUES FOR SEWING FLEECE

- When pinning pieces together, use long pins...the kind with bead heads are best because short pins tend to get lost in the fleece.
- Use a ball point needle. When stitching, try using a narrow zig-zag stitches, adjusting the width and length for the type of fleece you are using. Always test first on some scraps and keep for reference.
- Sew slowly and carefully the first time you stitch a seam as stitches are hard to remove.
- When sewing around shaped areas sew slowly being careful not to stretch the fleece as you feed fabric through your machine.
- Finger press or steam press on a low temperature setting using a press cloth.

SEWING TUTORIALS

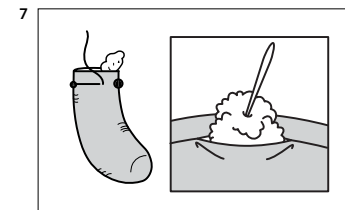
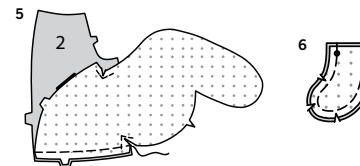
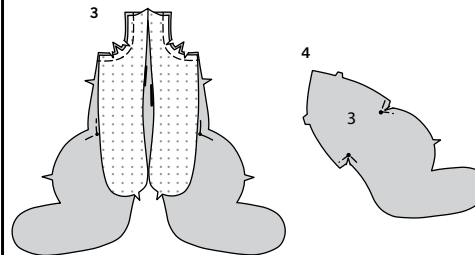
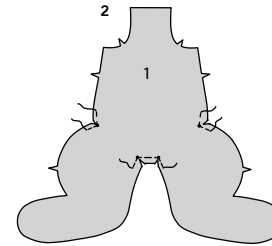
Build your skills viewing short, easy-to-follow videos at simplicity.com/sewingtutorialsSewing methods in **BOLD TYPE** have Sewing Tutorial Video available. Scan QR CODE to watch videos:**DART-** see **sewing flat dart** video.**EASE-** see **sewing two row gathers** video.**REINFORCE-** see **how to reinforce** video.**PATTERN PIECES WILL BE IDENTIFIED BY NUMBERS THE FIRST TIME THEY ARE USED.****STITCH SEAMS WITH RIGHT SIDES TOGETHER UNLESS OTHERWISE STATED.**

DOG A, B, C, D, E

NOTE: *Stitch in 1/2" (1.3cm) seams.*

- Pin interfacing to **WRONG** side of body front (1), upper body back (2), lower body back (3), tail (4), arm front (5) and arm back (6) sections, having raw edges even. Apply following manufacturer's directions.

- To **REINFORCE** inner corners of front between legs and at top of legs, stitch along seam line for about 1" (2.5cm) of small dot, stitching through small dot. Clip seam allowance to small dot at inner corners, being careful not to clip into reinforcement stitching.



- Stitch arm front sections to front, matching single notches. **REINFORCE** curves. Clip curves.

- REINFORCE** inner corners of lower body back (3) sections at top of leg and at rear.

- Stitch upper body back to lower body back, matching double notches.

- With **RIGHT** sides together and raw edges even, stitch tail sections together, leaving ends with small and large dots open. Trim seat. Clip curves.

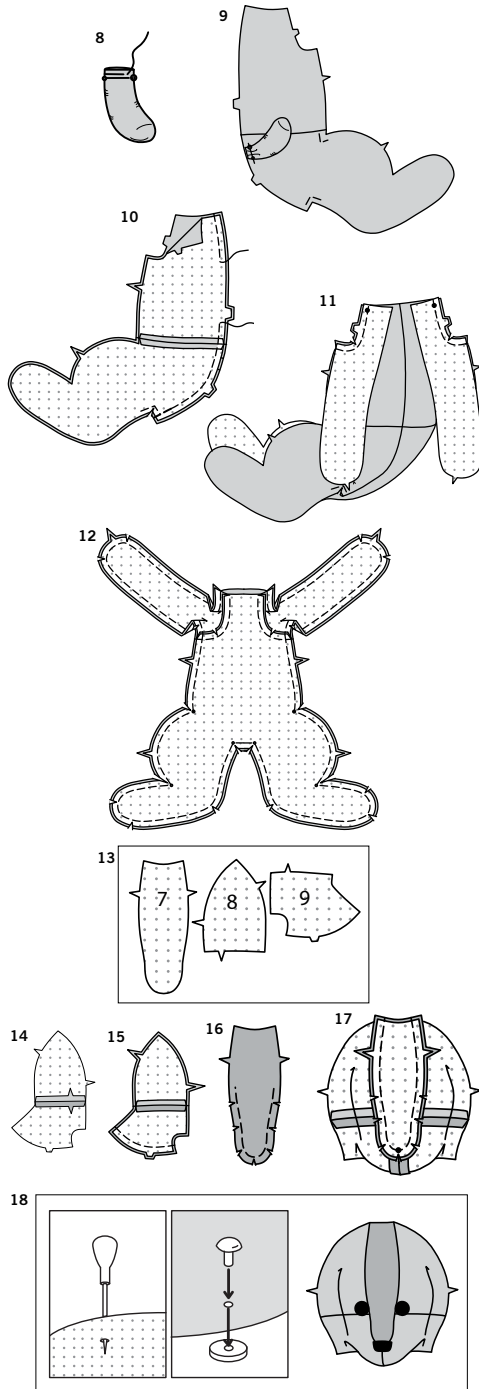
- Turn tail **RIGHT** side out. Stuff to within 3/4" (2mm) of opening. Baste raw edges of tail together.

TIPS FOR STUFFING:

- Pull fiberfill apart and fluff it before you use it. Break apart lumps and thick spots. This will help create a smoother looking project.
- Use pieces about the size of a tennis ball. Pack into place using the end of a chopstick or long handed spoon for large sections or the end of a crochet hook or chopstick for smaller sections.
- Pack firmly in place each time stuffing is added. Use both hands to mold and shape, being careful not to over stuff or make lopsided.

S9807

3 of 4



8. EASE straight end of tail through all thicknesses. If you prefer, you can gather by hand.

9. On OUTSIDE, pin tail to one lower back section, matching small and large dots; adjust ease stitches to fit; baste.

10. Pin center back seam of back sections (sandwiching tail), matching seams. Stitch, leaving an opening on upper back for turning and stuffing. Back-stitch at each end of opening to reinforce seam.

11. Stitch arm back sections to back, matching double notches and large dots. Stitch. **REINFORCE** curves. Clip curves. Press seams toward arm.

12. With RIGHT sides together and raw edges even, pin front to back, matching underarm seams and small dots. Stitch, leaving neck edge open, pivoting with needle in fabric at small dots. **REINFORCE** underarms and inner corners. Clip curves and to inner corners.

HEAD A, B

13. Apply interfacing to WRONG side of head center front (7), upper head front (8), and lower head front (9) sections.

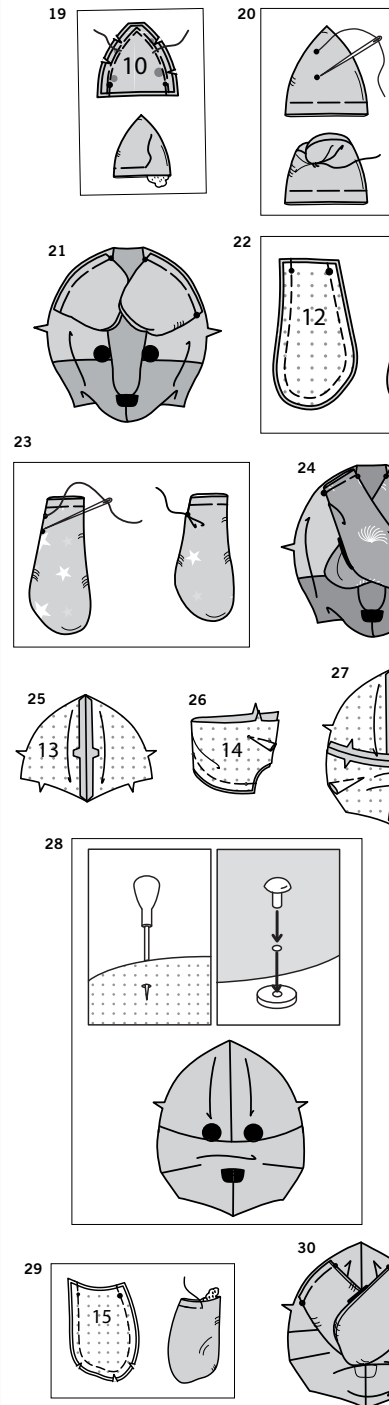
14. Stitch upper head front to lower head front, matching single notches.

15. Stitch head front sections together at center front seam, matching double notches. Press seam open.

16. **REINFORCE** seamline on head center along curves. Clip seam allowance to stitching, being careful not to cut through stitching.

17. Pin head front to head center, matching large dots; stitch. **REINFORCE** seam. Trim seam; clip curves. Press seam away from center.

18. To attach eyes and nose, using a sharp pointed object or an awl, poke holes at small dots on upper and lower head front. Insert eye and nose shanks through each corresponding opening from OUTSIDE. On INSIDE, secure in place with a washer, making sure it is securely attached.



NOTE: You have cut out four ear sections from fabric. Interface front sections only.

19. FOR EARS A – For each ear (10), baste felt interfacing to WRONG side of two mirror ear sections. Stitch interfaced ear to non-interfaced ear, leaving edge with small and large dots open. Trim corners. Clip curves. The interfaced ear will now be referred to as the ear front. Turn ear RIGHT side out. Stuff to within 3/4" (2mm) of opening. Baste raw edges together.

20. Thread a hand-sewing needle with a strong thread. To make tuck, insert needle between ear front and back, coming out at ear FRONT at lower small dot and then back in at remaining small dot, keeping back of ear free. Do this a couple of times. Draw up thread and fasten. Trim thread close to fabric or leave ends long and insert back into ear to conceal.

21. On OUTSIDE, baste ears to head matching small and large dots, having tucks toward face and back of ear facing up towards you.

22. FOR EARS B – For each ear, apply interfacing to WRONG side of two mirror ear (12) sections. Stitch interfaced ear to non-interfaced ear, leaving straight edge open. Trim corner. Clip curves. The interfaced ear will now be referred to as the ear front. Turn ear RIGHT side out. Baste raw edges together.

23. Thread a hand-sewing needle with a strong thread. To make tuck, insert needle between ear front and back, coming out at ear FRONT at one small dot and then back in at remaining small dot, keeping back of ear free. Do this a couple of times. Draw up thread and fasten. Trim thread close to fabric or leave ends long and insert back into ear to conceal.

24. On OUTSIDE, baste ears to head matching small and large dots, having tucks toward face and back of ear facing up towards you.

HEAD C, D

25. Apply interfacing to WRONG side of upper head front (13) sections. Stitch sections together at center front seam, matching double notches.

26. Apply interfacing to WRONG side of lower head front (14). To make side **DARTS**, fold fabric through the center of dart, bringing broken lines and small dots together. Stitch from outer edge to point; press down. Stitch dart seam same as for side darts, having raw edges even; press seam open as far as possible or to one side.

27. Stitch upper head front to lower head front, matching centers and single notches.

28. To attach eyes, using a sharp pointed object or an awl, poke a hole at inner small dots on front of head. Insert eye shank through opening from OUTSIDE. On INSIDE, secure in place with a washer, making sure it is securely attached. Attach safety nose at remaining small dot.

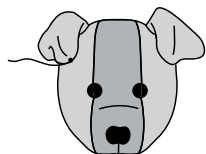
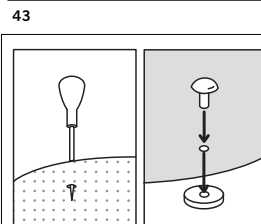
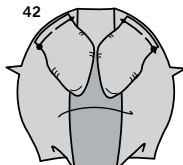
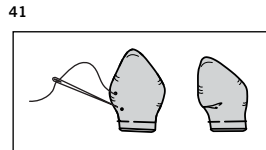
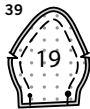
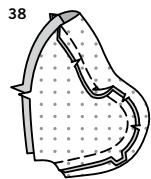
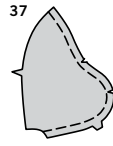
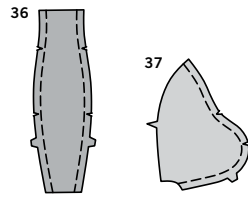
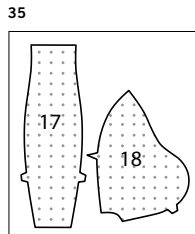
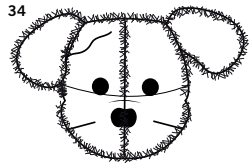
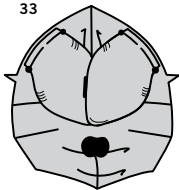
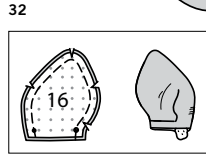
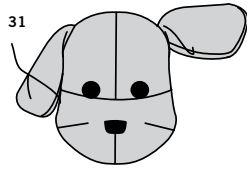
NOTE: You have cut out four ear sections from fabric. Interface front sections only.

29. FOR EARS C – For each ear (15), apply interfacing to WRONG side of two mirror ear sections. Stitch interfaced ear to non-interfaced ear, leaving edge with small and large dots open. Clip curves. The interfaced ear will now be referred to as the ear front. Turn ear RIGHT side out. Stuff to within 3/4" (2mm) of opening. Baste raw edges together.

30. On OUTSIDE, baste ears to head matching small and large dots, having interfaced front toward face and back of ear facing up towards you.

S9807

4 of 4



31. Thread a hand-sewing needle with a strong thread. Tack **UNDERSIDE** of ear to head at small dots, keeping back ear free. Do this a couple of times. Fasten thread and trim close to fabric or leave ends long and insert back into ear to conceal.

32. EARS D - For each ear (16), apply interfacing to **WRONG** side of two mirror ear sections. Stitch interfaced ear to non-interfaced ear, leaving straight edge open. Clip curves. The interfaced ear will now be referred to as the ear front. Turn ear **RIGHT** side out. Stuff to within 3/4" (2mm) of opening. Baste raw edges together.

33. On **OUTSIDE**, baste ears (interfaced side) to head matching small and large dots.

34. Thread a hand-sewing needle with a strong thread. Tack **UNDERSIDE** of ear to head at small dots, keeping back ear free. Do this a couple of times. Fasten thread and trim thread close to fabric or leave ends long and insert back into ear to conceal.

HEAD E

35. Apply interfacing to **WRONG** side of head front (17) and head side front (18) sections.

36. REINFORCE seamline on head front along curves. Clip seam allowance along curves to stitching, being careful not to cut through stitching.

37. REINFORCE seamline on head side front along curves. Clip seam allowance along curves to stitching, being careful not to cut through stitching.

38. Pin head side front sections to head front, matching double notches; Stitch. Press seam away from center, clipping curves where necessary.

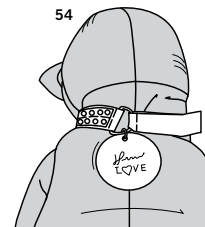
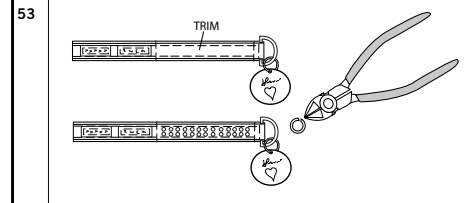
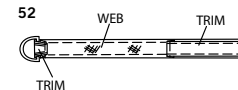
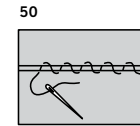
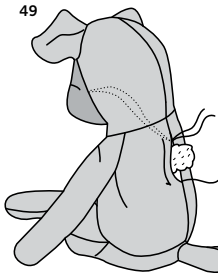
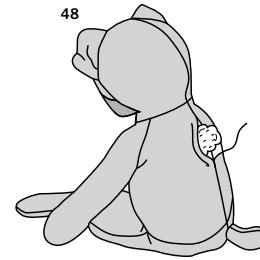
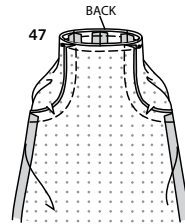
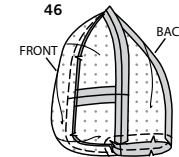
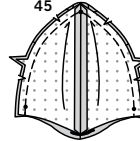
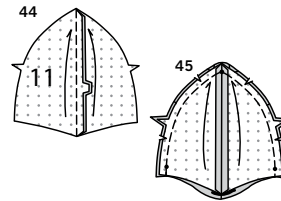
39. For each ear (19), apply interfacing to **WRONG** side of two mirror ear (19) sections. Stitch interfaced ear to non-interfaced ear, leaving straight edge open. Clip curves. The interfaced ear will now be referred to as the ear front.

40. Turn ear **RIGHT** side out. Stuff to within 3/4" (2mm) of opening. Baste raw edges together.

41. To make tuck on **LEFT** front ear, insert needle between ear front and back, coming out at on ear **FRONT** at one small dot and then back in at remaining small dot, keeping back of ear free. Do this a couple of times. Draw up thread and fasten. Trim thread close to fabric or leave ends long and insert back into ear to conceal.

42. On **OUTSIDE**, baste **LEFT** front ear to **LEFT** side of front head, matching small and large dots, having tucked front toward the face and ear back facing up towards you. Baste **RIGHT** ear to **RIGHT** side of head, matching small and large dots.

43. To attach eyes, using a sharp pointed object or an awl, poke a hole at inner small dots on front of head. Insert eye shank through opening from **OUTSIDE**. On **INSIDE**, secure with a washer. Attach safety nose at small dot below eyes. Thread a hand-sewing needle with a strong thread. Tack tip of **RIGHT** ear to head at small dots. Fasten thread and trim close to fabric or leave ends long and insert back into ear to conceal.



CONTINUE AS FOLLOWS FOR ALL VIEWS

44. Apply interfacing to **WRONG** side of head back (11) sections. Stitch center back seam of head back sections, matching triple notches.

45. Pin head front to back along outer edges, matching single notches and small dots at centers and at seam line on neck edge. Stitch. Clip curves. Turn seam toward back, clipping curves if necessary.

46. REINFORCE seam line along neck edge and clip to stitching along curves, being careful not to clip through stitching.

47. With **RIGHT** sides together, insert head into body. Pin neck edges together, matching small dots, centers front and back. Stitch. Press seam toward head, clipping curves if necessary.

48. FOR VIEWS A, B, C, D - Turn body **RIGHT** side out through opening in center back seam. Stuff dog.

49. FOR VIEW E - Turn body **RIGHT** side out through opening in center back seam. Thread a needle with strong thread. To shape face, insert needle in back opening and invisibly pick up a couple of stitches at small dot below nose, leaving long tread ends at end of opening. Stuff face, working stuffing around threads. Pull on threads just enough to make a slight indent, shaping as you stuff. Fasten threads to stuffing at back of head or to seam allowances at opening. Stuff remainder of dog.

50. FOR ALL VIEWS- Ladder-stitch openings closed.

51. Make collar, as follows: Cut on piece of webbing 20-1/2" (52cm) long and one piece of collar trim 28" (72.5cm). Pin webbing to **WRONG** side of collar trim, having raw edges even on one end, as shown.

52. Turn end with just trim to **UNDERSIDE** of collar at inner end of web, turning under 1/2" (1.3cm) on inner raw edge. Stitch close to inner turned edge and then close to both long edges. Insert webbed end through D-Ring, turning 1-1/2" (3.8cm) to **UNDERSIDE**, encasing ring. Turn under 1/2" (1.3cm) on inner raw edge; stitch.

53. Cut one piece of hook and loop tape 2-1/2" (6.3cm) long. Separate tape. On **UNDERSIDE**, pin one tape over trim, having outer edge about 1/2" (1.3cm) away from end. Stitch close to outer edges. Fasten collar around dog's neck as shown on envelope and mark placement for remaining tape. Remove collar and stitch remaining tape in place. Stamp wood tag, following manufacturer's directions. If necessary, using an awl or large needle, poke a hole in tag. Using pliers, open jump ring. Insert ring through tag and D-ring; close ring.

54. FOR SPIKED TRIM - Cut trim to fit between hemmed end with D-ring and inner edges of hook and loop tape. On **TOPSIDE**, stitch trim close to outer edges using an adjustable zipper foot, or if you prefer, glue in place. Attach collar around dog's neck.



Congrats!

You've completed your sewing adventure

**SHARE
YOUR** LOOK



Post your pattern and tag us
@simplicity_creative_group and **#simplicitypatterns**
for a chance to be featured on our social media.

Look for more PDF patterns at **simplicity.com**

Have a question or need help with your sewing project call us at
1-888-588-2700



Simplicity ©2023 a division of IG Design Group Americas Inc. • Atlanta, GA 30342 USA www.thedesigngroup.com • All Rights Reserved. www.simplicity.com • Made in the U.S.A. Fabriqué aux États-Unis.

To be used for individual private home use only and not for commercial or manufacturing purposes. • A usage privé seulement et non à des fins commerciales ou de production en série. • Para uso privado solamente, no se puede utilizar con propósitos de comercialización o de producción en serie.