

S9805

Simplicity[®]



easy-to-sew

Easy

MISSES' PINAFORE APRONS AND TOTE IN ONE SIZE

Suggested Fabrics: Chambray, Chintz, Cotton Types, Linen Types, Seersucker. **C** also in Cotton Duck, Denim, Twill. **Lining:** Cotton Types, Lining Fabric. **Interfacing:** Canvas or Heavyweight Fusible.

Notions: A,B: 1½ yds. (1.3m) of 1" (2.5cm) twill tape (optional).

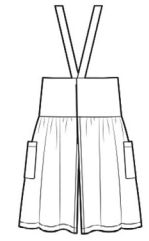
Sizes	XS (4-6)	S (8-10)	M (12-14)	L (16-18)	XL (20-22)	
Sizes-European	30-32	34-36	38-40	42-44	46-48	

Apron A	60"*	2½	2½	2¼	2¼	2½	Yds. m
	150cm*	1.9	1.9	2.1	2.1	2.2	

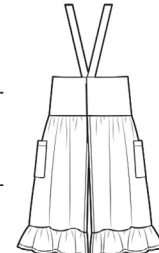
Apron B	60"*	2¾	2¾	2½	2½	3	Yds. m
	150cm*	2.5	2.5	2.6	2.6	2.7	

Tote C 45, 60"* - ¾ yd. (115, 150cm* - 0.8m)
Lining 45"** - ½ yd. (115cm** - 0.6m)
Interfacing: **Heavyweight fusible** - 20" - ¾ yd. (51cm - 0.8m)
Canvas - 45" - ½ yd. (115cm - 0.5m)

*with nap **without nap



A



B



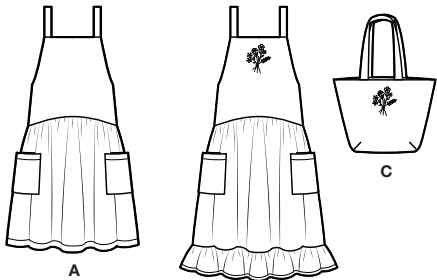
C

Shop all the pattern brands you love @

Simplicity[®].com

Simplicity®

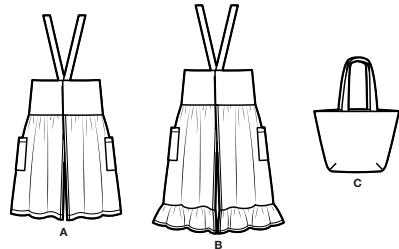
Thank you for purchasing this Simplicity pattern. We made every effort to provide you with a high quality product.



A

B

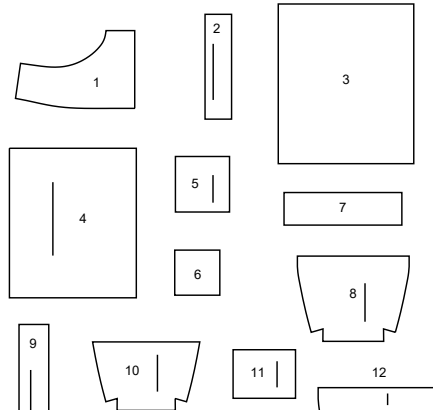
C



A

B

C



- 1 BODICE FRONT AND BACK - A,B
- 2 STRAP - A,B
- 3 SKIRT FRONT - A,B
- 4 SKIRT BACK - A,B
- 5 POCKET - A,B
- 6 GUIDE - B,C
- 7 RUFFLE - B
- 8 FRONT AND BACK - C
- 9 STRAP - C
- 10 FRONT AND BACK LINING - C
- 11 INSIDE POCKET - C
- 12 FRONT AND BACK FACING - C

General Directions

The Pattern

- SYMBOLS**
- ↔ GRAIN LINE Place on straight grain of fabric parallel to selvage
 - ▬ PLACE SOLID LINE on fold of fabric.
 - - - CENTER FRONT OR BACK of garment.
 - ∇ NOTCHES
 - ° ○ DOTS
 - CUTTING LINE
 - ▬▬ LENGTHEN OR SHORTEN LINES

SEAM ALLOWANCE: 5/8" (1.5cm) unless otherwise stated is included but not printed on MULTI-SIZE PATTERNS. Mark your size with colored felt tip pen. See chart on tissue for how to use MULTI-SIZE PATTERNS.

ADJUST IF NEEDED

Make adjustments before placing pattern on fabric.

TO LENGTHEN:
Cut pattern between lengthen or shorten lines. Spread pattern evenly, the amount needed and tape to paper.

TO SHORTEN:
At lengthen or shorten lines, make an even pleat taking up amount needed. Tape in place.

When lengthen or shorten lines are not given, make adjustments at lower edge of pattern.

Cutting/Marking

BEFORE CUTTING:

PRESS pattern pieces with a warm dry iron. PRE-SHRINK fabric by pre-washing washables or steam-pressing non-washables.

CIRCLE your cutting layout.

PIN pattern to fabric as shown in Cutting Layouts.

• FOR DOUBLE THICKNESS: Fold fabric with RIGHT sides together.

• FOR SINGLE THICKNESS: Place fabric RIGHT side up.

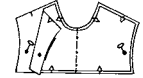
• FOR PILE, SHADED OR ONE WAY DESIGN FABRICS: Use "with nap" layouts

AFTER CUTTING:

Transfer markings to WRONG side of fabric before removing pattern. Use pin and chalk method or dressmaker's tracing paper and wheel.

To Quick Mark:

- Snip edge of fabric to mark notches, ends of fold lines and center lines.
- Pin mark dots.



Sewing

- SEW garment following Sewing Directions.
- PIN or machine-baste seams matching notches.
- STITCH 5/8" (1.5 cm) seams unless otherwise stated.
- PRESS seams open unless otherwise indicated clipping when necessary so seams will lie flat.
- TRIM seams to reduce bulk, as shown below.



Trim enclosed seams into layers



Trim corners



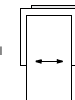
Clip inner curves



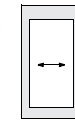
Notch outer curves

SPECIAL CUTTING NOTES

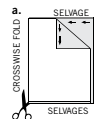
★ If layout shows a piece extending past fold, cut out all pieces except piece that extends.



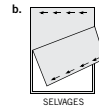
Open out fabric to single thickness. Cut extending piece on RIGHT side of fabric in position shown.



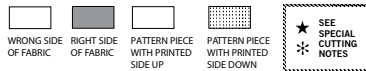
✱ Mark small arrows along both selvages indicating direction of nap or design. Fold fabric crosswise with RIGHT sides together, and cut along fold (a).



Turn one fabric layer around so arrows on both layers go in the same direction. Place RIGHT sides together (b).



Cutting Layouts

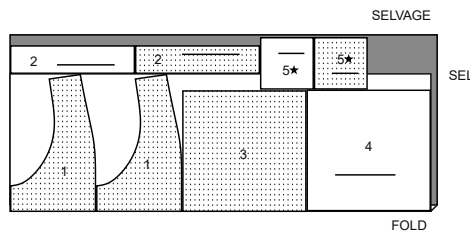


POSITION OF PATTERN PIECES MAY VARY SLIGHTLY ACCORDING TO YOUR PATTERN SIZE

APRON A

USE USE PIECES 1 2 3 4 5

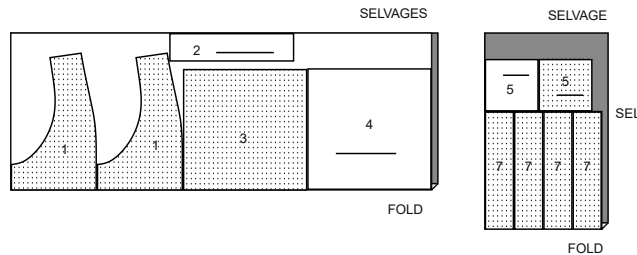
60" (150CM) WITH NAP ALL SIZES



APRON B

USE PIECES 1 2 3 4 5 7

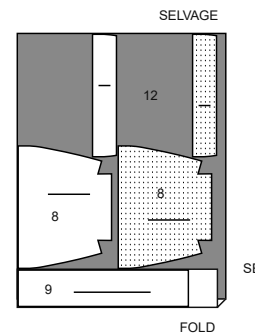
60" (150CM) WITH NAP ALL SIZES



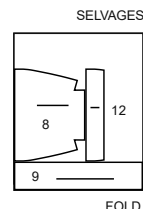
TOTE C

USE PIECES 8 9 12

45" (115CM) WITH NAP



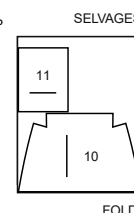
60" (150CM) WITH NAP



LINING C

USE PIECES 10 11

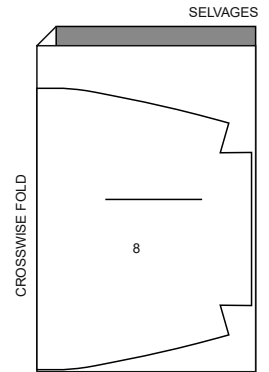
45" (115CM) WITHOUT NAP



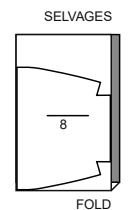
INTERFACING

USE PIECE 8

20" (51CM)



45" (115CM) WITH NAP



SEWING TUTORIALS



Build your skills viewing short, easy-to-follow videos at simplicity.com/sewingtutorials

Sewing Directions

FABRIC KEY

Sewing methods in **BOLD TYPE** have Sewing Tutorial Video available. Scan QR CODE to watch videos:

EDGESTITCH - see how to edgestitch video.

FINISH - Stitch 1/4" (6mm) from raw edge and finish with one of the following: (1) Pink OR (2) Overcast OR (3) Turn in along stitching and stitch close to fold OR (4) Overlock.

GATHER - see sewing two row gathers video.

INTERFACING - Pin interfacing to wrong side of fabric. Baste along seamlines; or if fusible, fuse interfacing in place following manufacturer's directions.

NARROW HEM - see narrow hem video.

SLIPSTITCH - see how to slip-stitch video.

STAYSTITCH - see how to do stay-stitching video.

UNDERSTITCH - see how to understitch video.

PATTERN PIECES WILL BE IDENTIFIED BY NUMBERS THE FIRST TIME THEY ARE USED.

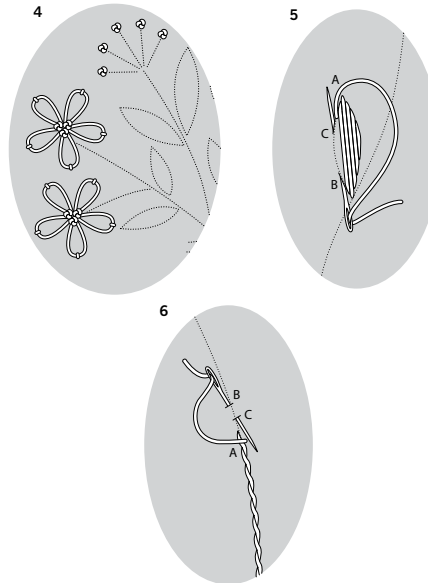
STITCH 5/8" (1.5CM) SEAMS WITH RIGHT SIDES TOGETHER UNLESS OTHERWISE STATED.

OPTIONAL EMBROIDERY MOTIF A, B, C

NOTE: FOR VIEW C – Apply INTERFACING to front and back (8) before you begin.

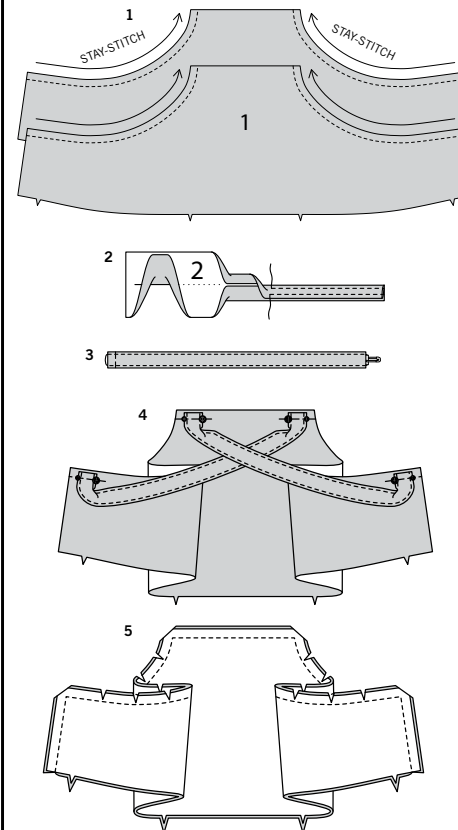
- FOR VIEW A, B** – Center motif on guide (6) over one front and back (1) section with upper point of upper flower 2" (5cm) from upper front edge, or as you prefer. Transfer markings.
FOR VIEW C – Center motif on guide (6) over one front and back (8) section with upper point of upper flower 2-5/8" (6.5cm) from upper front edge, or as you prefer. Transfer markings.

- Make the petals of the two lower **LEFT** flowers in a lazy-daisy stitch, using two or three strands of embroidery floss. To make a lazy-daisy stitch, bring the thread up and hold it in a loop with the left thumb. Insert needle back where the thread emerged. Then bring the needle out the length the stitch desired and pull it through the loop. Make a small straight stitch to anchor the loop at its crown.
- Make three French knots at the center of each daisy. To make a French knot, work with as many threads as desired and use a large eyed needle. Bring thread to **RIGHT** side at A; hold thread with thumb and forefinger in opposite hand; wind thread around the needle two or three times. Hold thread down with thumb, and put needle into fabric close to A, but not in the same hole. Pull to **WRONG** side, drawing up thread to form French knot.



- Make five French knots for the flower above the daisies. Make four French knots for the centers of the two remaining flowers after completing Step 5.
- Fill in the remaining petal and leaf shapes with a satin stitch. To make a satin stitch, bring the thread to the **RIGHT** side of A, down at B, up at C, continuing to fill the shape. (Embroidery stitches should be close enough to cover the area without overlapping the thread).
- Use an outline stitch for stems and tie. To make an outline stitch, work with as many threads as desired and use a large eyed needle. Bring thread to **RIGHT** side at A, down at B, up at C, covering the line from end to end. Always hold thread in the same position either all above or all below the needle for an even line.

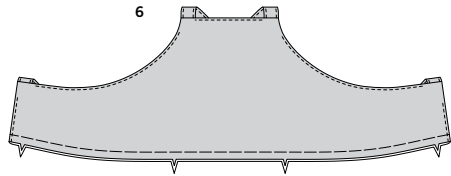
APRON A, B



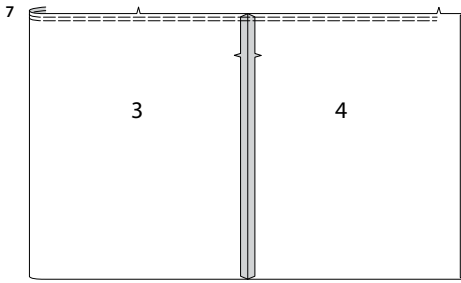
- Begin with "EMBROIDERY MOTIF" instructions above. **STAYSTITCH** armhole edge of bodice front and back (1) fabric and facing sections. (Staystitching shown only in the first illustration).
- To make two straps, fold strap (2) in half, lengthwise with **WRONG** sides together. Press, setting in a crease. Open out long edges of strap and turn them to **WRONG** side so that they meet at the crease. Press. Fold strap in half lengthwise, bringing pressed edges together. Stitch close to both long edges.
- Cut a piece of 1" (1.5cm) wide twill tape the length of he strap. Attach a safety pin to one end. Thread tape through strap. Baste raw edges together.
- On **OUTSIDE**, pin one end of each strap to bodice front, matching small and large dots; baste. On **OUTSIDE**, pin remaining end of **RIGHT** front strap to **LEFT** back, and remaining end of **LEFT** front strap to **RIGHT** back, matching small and large dots; baste.
- With **RIGHT** sides together and raw edges even, pin bodice front and back facing to bodice front and back (over straps). Stitch neck, armhole, and side edges. Trim seam and corners; clip curves.

S9805

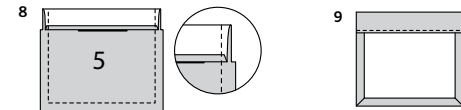
3 of 4



6. UNDERSTITCH the facing. Turn facing to INSIDE; press, pressing out the straps. Baste raw edges together.

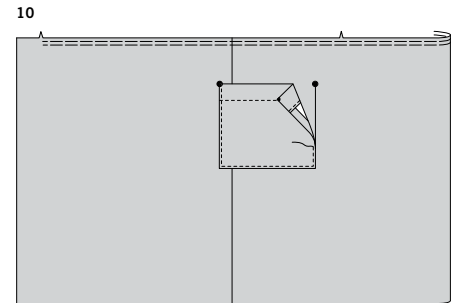


7. Press under 1/4" (6mm) on back edges of skirt back (4) sections. Stitch skirt front (3) to skirt back at side edges. **GATHER** upper edge between the back notches.

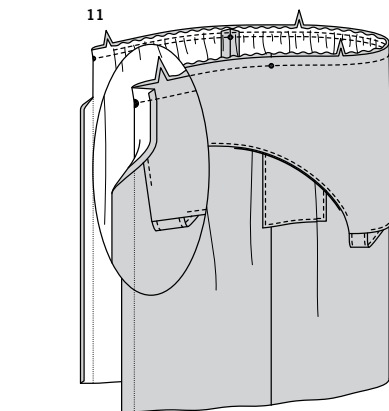


8. Press under 1/4" (6mm) on upper edge of pocket (5). Turn upper edge to OUTSIDE along fold line, forming facing. Stitch along seam line on raw edges. Trim seam allowance in the facing area to 1/4" (6mm).

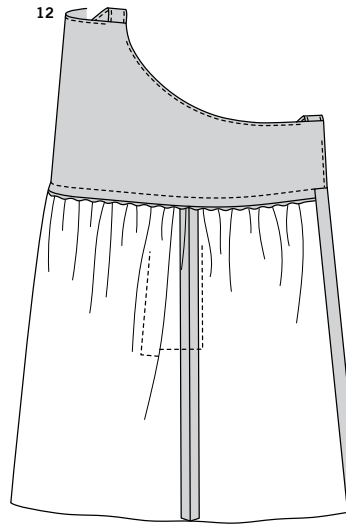
9. Turn corners RIGHT side out, turning facing to the WRONG side; press, pressing under raw edges along stitching. Stitch facing close to inner edge.



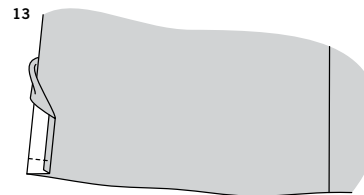
10. On OUTSIDE, pin pocket to front along pocket line, matching large dots. **EDGESTITCH** pocket close to side and lower edges.



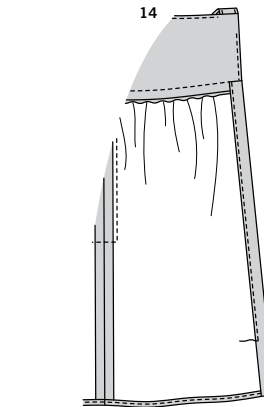
11. With RIGHT sides together, pin lower edge of bodice to upper edge to skirt, matching notches, placing side seams at small dots, pulling up gathering stitches to fit. Baste. Turn upper back edges of skirt to OUTSIDE along fold line (over bodice). Stitch. Press seam toward skirt.



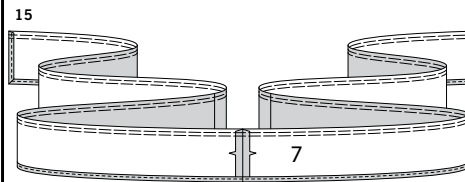
12. Turn back corner out, pressing bodice out; press seam toward skirt. Press remaining back edge of skirt to INSIDE along fold line.

**HEM A**

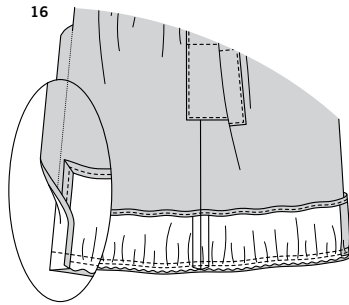
13. Turn lower edge skirt facing to OUTSIDE along fold line. Stitch across facing along hem marking.



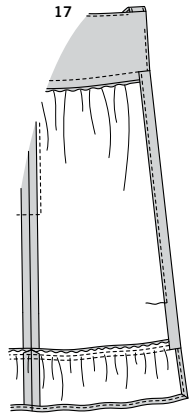
14. Turn facing to INSIDE; press, pressing up hem along marking. **NARROW HEM** lower edge of apron. **EDGESTITCH** inner pressed edge of skirt facing to within 5" (13cm) of hem.

**RUFFLE B**

15. Stitch four ruffle (7) sections together at ends. **NARROW HEM** side and lower edges. **GATHER** upper edge between side edges of hem.

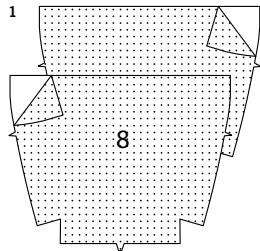


- 16.** With RIGHT sides together, pin ruffle to lower edge of skirt between facing foldlines, matching centers and seams, pulling up gathering stitches to fit. Baste. Turn lower edge skirt facing to OUTSIDE along fold line (over ruffle). Stitch across facing and ruffle.

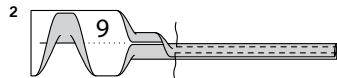


- 17.** Turn facing to INSIDE; press, pressing out the ruffle. Press seam toward skirt. **EDGESTITCH** remainder of inner pressed edge of skirt facing.

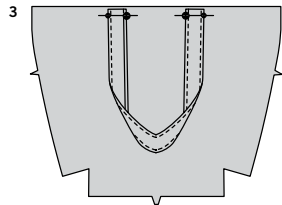
BAG C



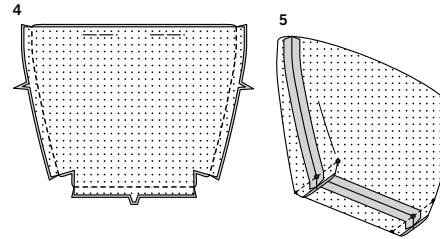
- 1.** Apply **INTERFACING** to each front and back (8) section. Begin with "**EMBROIDERY MOTIF**" instructions above.



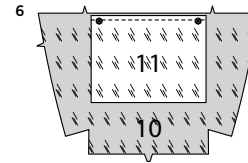
- 2.** To make two straps, fold strap (9) in half, lengthwise with **WRONG** sides together. Press, setting in a crease. Open out long edges of strap and turn them to **WRONG** side so that they meet at the crease. Press. Fold strap in half lengthwise, bringing pressed edges together. Stitch close to both long edges.



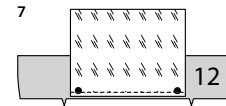
- 3.** On **OUTSIDE**, pin ends of strap to each front and back section, matching small and large dots; baste.



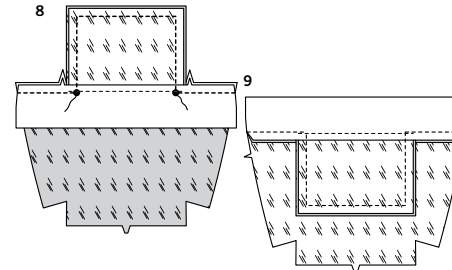
- 4.** Stitch front to back at side seams. Stitch lower edges together.



- 6.** With **RIGHT** sides together, pin inside pocket (11) to one front and back lining (10) section, matching large dots. Stitch in a 1/2" (1.3cm) seam. This will be the inside lower back.

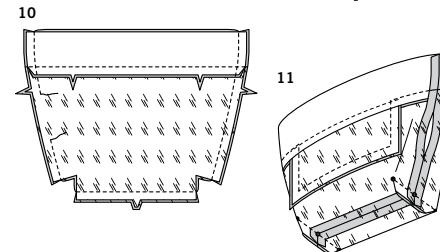


- 7.** With **RIGHT** sides together, pin remaining inside pocket to the **RIGHT** side of one front and back facing (12) section, matching large dots. Stitch in a 1/2" (1.3cm) seam. This pocketed section will be the **INSIDE** upper back.

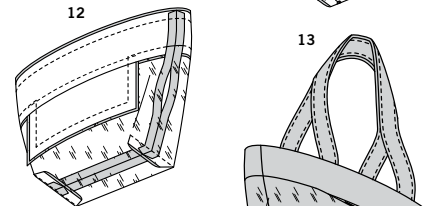


- 8.** Press pockets out. With **RIGHT** sides together, pin pocket and facing to pocket and lining, matching large dots and notches. Stitch in a 5/8" (1.5cm) seam from side edges to large dot, backstitching at dot to reinforce the seam. Stitch side and lower edges of pocket together.

- 9.** On **INSIDE**, press seam and pocket toward lining, pressing facing out.

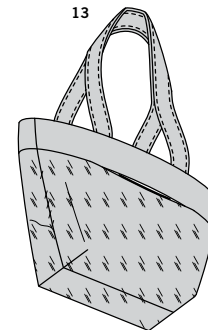


- 10.** Stitch remaining section of facing to remaining section of lining. Press seam toward lining. With **RIGHT** sides together and raw edges even, pin facing/lining sections together at side and lower edges. Stitch, leaving an opening in one side edge for turning.



- 11.** Stitch dart seams in lining in the same manner as bag. Press seams toward bottom.

- 12.** With **RIGHT** sides together and raw edges even, pin facing/lining to bag along upper edge. Stitch.



- 13.** Turn lining; press. **SLIPSTITCH** opening in lining closed. Turn bag **RIGHT** side out; press.



Congrats!

You've completed your sewing adventure

**SHARE
YOUR** LOOK



Post your pattern and tag us
@simplicity_creative_group and **#simplicitypatterns**
for a chance to be featured on our social media.

Look for more PDF patterns at **simplicity.com**

Have a question or need help with your sewing project call us at
1-888-588-2700



Simplicity ©2023 a division of IG Design Group Americas Inc. • Atlanta, GA 30342 USA www.thedesigngroup.com • All Rights Reserved. www.simplicity.com • Made in the U.S.A. Fabriqué aux États-Unis.

To be used for individual private home use only and not for commercial or manufacturing purposes. • A usage privé seulement et non à des fins commerciales ou de production en série. • Para uso privado solamente, no se puede utilizar con propósitos de comercialización o de producción en serie.