



Very Easy

Très Facile

MISSES' KNIT FRONT WRAP HALTER DRESS IN TWO LENGTHS

Suggested Fabrics: Stretch Knits only such as Jerseys, Matte Jerseys, Stretch Velvet, Tricot. See Pick-A-Knit® Rule.

Notions: One pkg. of straight seam binding, ½" (1.3cm) stretch lace (optional).

Sizes	8	10	12	14	16	18	20	22	24	26
European	34	36	38	40	42	44	46	48	50	52

BODY MEASUREMENTS: Select pattern size based on body measurements

Bust	31½	32½	34	36	38	40	42	44	46	48	Ins.
Waist	24	25	26½	28	30	32	34	37	39	41½	"
Hip-9" below waist	33½	34½	36	38	40	42	44	46	48	50	"
Back-neck to waist	15¾	16	16¼	16½	16¾	17	17¼	17½	17¾	17¾	"

Short Dress

60**	2%	2%	2%	2%	2%	2%	2%	2%	2%	3	3	Yds.
------	----	----	----	----	----	----	----	----	----	---	---	------

Long Dress

60**	3%	3%	3%	3%	3%	3%	4	4	4	4	4	Yds.
------	----	----	----	----	----	----	---	---	---	---	---	------

FINISHED GARMENT MEASUREMENTS (Includes Design and Wearing Ease)

Bust	33	34	35½	37½	39½	41½	43½	45½	47½	49½	Ins.
Waist	25	26	27½	29½	31½	33½	35½	37½	39½	41½	"

Width, lower edge

Short Dress	61½	62½	64	66	68	70	72	74	76	78	Ins.
Long Dress	95	96	97½	99½	101½	103½	105½	107½	109½	111½	"

Finished back length from base of neck

Short Dress	35¾	36	36¾	36¾	36¾	37	37¾	37¾	37¾	38	Ins.
Long Dress	53¾	54	54¾	54¾	54¾	55	55¾	55¾	55¾	56	"

*with nap **without nap

ROBE DOS NU PORTEFEUILLE EN TRICOT EN DEUX LONGUEURS POUR JEUNES FEMMES

Tissus Conseillés: Seulement pour tricotons extensibles tels que Jerseys, Jerseys mat, Velours extensible, Tricot. Voyez la Règle-Pour-Choisir-Un-Tricot®.

Mercerie: 1 paquet d'extra-fort pour couture, dentelle extensible de 1.3cm (facultatif).

Tailles	8	10	12	14	16	18	20	22	24	26
Françaises	36	38	40	42	44	46	48	50	52	54
Européen	34	36	38	40	42	44	46	48	50	52

MESURES DU CORPS: Choisissez la taille du patron basée sur les mesures du corps

Poitrine	80	83	87	92	97	102	107	112	117	122	cm
Taille	61	64	67	71	76	81	87	94	99	106	"

Hanches (23cm au-dessous de la taille)

	85	88	92	97	102	107	112	117	122	127	cm
Dos du cou à la taille	40	40.5	41.5	42	42.5	43	44	44	44.5	44.5	"

Robe courte

150cm*	2.4	2.4	2.4	2.6	2.6	2.6	2.7	2.7	2.8	2.8	m
--------	-----	-----	-----	-----	-----	-----	-----	-----	-----	-----	---

Robe longue

150cm*	3.4	3.4	3.4	3.5	3.5	3.5	3.7	3.7	3.7	3.7	m
--------	-----	-----	-----	-----	-----	-----	-----	-----	-----	-----	---

MESURES DES VÊTEMENTS FINI (Motif et aisance de port compris)

Poitrine	84	86	90	95	100	105	110	116	121	126	cm
Taille	64	66	70	75	80	85	90	95	100	105	"

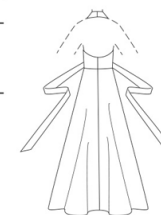
Largeur à l'ourlet

Robe courte	156	159	163	168	173	178	183	188	193	198	cm
Robe longue	241	244	248	253	258	263	268	273	278	283	"

Longueur finie – dos, votre nuque à l'ourlet

Robe courte	91	91	92	93	93	94	95	95	96	97	cm
Robe longue	137	137	138	138	139	140	140	141	142	142	"

*avec sens **sans sens



Use the 1 inch (2.54cm) box to ensure you are using rule at 100%

Utilisez la boîte de 2.54 cm pour vous assurer d'utiliser la règle à 100%.

Utilizar un cuadrado de 2.54 cm para asegurarse de estar usando la regla al 100%.

PICK-A-KNIT® RULE

FOR THIS PATTERN - 4" (10 cm) OF KNIT FABRIC MUST STRETCH CROSSWISE FROM HERE
POUR CE PATRON - LE JERSEY DOIT S'ÉTIRER DANS LA LARGEUR DE 4" (10 cm) DEPUIS ICI
PARA ESTE PATRON - LAS MALLAS DEBEN ESTIRARSE A LO ANCHO POR 4" (10 cm) DESDE AQUÍ



TO HERE 50%
JUSQUE LA 50%
HASTA ALLA 50%



When using the Pick-A-Knit® rule to measure your fabrics stretch capacity, rule must be viewed or printed at 100%.
Quand vous utilisez la règle Pick-A-Knit® pour mesurer la capacité d'élasticité des tissus, la règle doit être visible ou imprimée à 100%.
Al utilizar la regla Pick-A-Knit® para medir la capacidad de elasticidad de las telas, la regla debe estar visible o impresa al 100%.

AUTHENTIC VINTAGE PATTERN REPRODUCTION

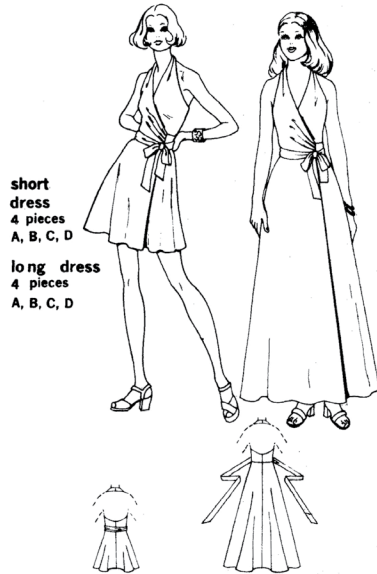
INCLUDES ADDITIONAL SIZE OPTIONS AND CUTTING LAYOUTS

metric chart
converting inches and yards
to centimeters and meters

STANDARD BODY MEASUREMENTS	80	83	87	91	95	97	102	108	114	120	126	132	138	144	150
Bust	31 1/2	32 1/2	34	35 1/2	37	38 1/2	40 1/2	42 1/2	45	47 1/2	50	52 1/2	55	57 1/2	60
Waist	26	27	28	29	30	31	32	33	34	35	36	37	38	39	40
Hip - 22.9 cm below waist	35	36	37	38	39	40	41	42	43	44	45	46	47	48	49
Black - neck to waist	40	40.5	41.5	42	42.5	43	44	45	45.5	46	46.5	47	47.5	48	48.5
Fabric required	8	10	12	14	16										
Short Dress	2.40	2.40	2.65	2.65	2.65	2.65	2.65	2.65	2.65	2.65	2.65	2.65	2.65	2.65	2.65
115 cm without nap	2.10	2.10	2.20	2.20	2.20	2.20	2.20	2.20	2.20	2.20	2.20	2.20	2.20	2.20	2.20
140 cm	1.95	2.10	2.10	2.20	2.20	2.20	2.20	2.20	2.20	2.20	2.20	2.20	2.20	2.20	2.20
150 cm															
Long Dress	3.35	3.45	3.65	3.70	3.70	3.70	3.70	3.70	3.70	3.70	3.70	3.70	3.70	3.70	3.70
145 cm without nap	2.90	2.90	3.00	3.20	3.20	3.20	3.20	3.20	3.20	3.20	3.20	3.20	3.20	3.20	3.20
140 cm	2.75	2.75	2.75	2.75	2.75	2.75	2.75	2.75	2.75	2.75	2.75	2.75	2.75	2.75	2.75
150 cm															
Garment Measurements	90.2	91.4	92.7	94	94	94	94	94	94	94	94	94	94	94	94
Finished back length of short dress	136.4	137.2	137.9	138.4	138.4	138.4	138.4	138.4	138.4	138.4	138.4	138.4	138.4	138.4	138.4
Finished back length of long dress	168.2	168.2	168.2	168.2	168.2	168.2	168.2	168.2	168.2	168.2	168.2	168.2	168.2	168.2	168.2
Waist to lower edge of long dress	241.9	244.4	244.4	244.2	244.2	244.2	244.2	244.2	244.2	244.2	244.2	244.2	244.2	244.2	244.2
Width of lower edge of long dress															
Sewing notations - Polyester or nylon thread, stretch lace (opt.)															

Extra fabric needed to match plaids, stripes, one-way designs
Pattern sized for stretch knits only.
Not suitable for bonded knits.

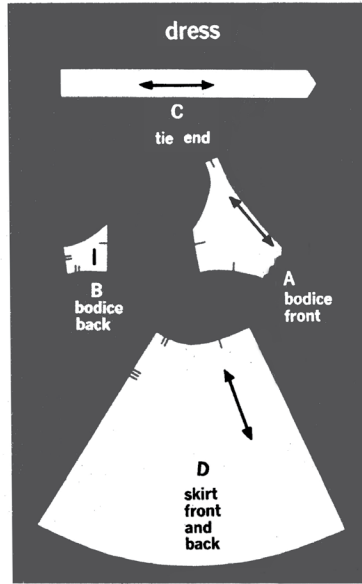
Simplicity 5404
cutting and
sewing directions



short dress
4 pieces
A, B, C, D

long dress
4 pieces
A, B, C, D

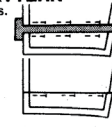
select pattern pieces
for your view
4 pieces given



**How to use your
Simplicity Pattern**
read first... then sew!

1. PREPARE YOUR PATTERN

Select and press pattern pieces. Don't trim away margins. Pattern is made to body measurements with "ease" allowed for design, fit and comfort. Check your back waist and dress length. If necessary, alter the pattern before placing it on fabric.



TO LENGTHEN: Cut pattern between printed lines. Place paper underneath. Spread pattern the necessary amount and pin to paper.
TO SHORTEN: At printed line, pin a pleat half the amount to be shortened [i.e. 1/2" (1, 2 cm) pleat to shorten 1" (2, 5 cm)]. See Simplicity Sewing Book for other pattern alterations.

2. KNOW YOUR PATTERN MARKINGS

STRAIGHT GRAIN: Place an even distance from selvage or a straight thread.
FOLD GRAIN: Place on fold of fabric.
CUTTING LINE
LENGTHENING AND SHORTENING LINES

STITCHING LINES: For darts, seams etc.
NOTCHES: Blocked in for easier cutting.
SEAM ALLOWANCE: 5/8" (1, 5 cm) unless otherwise stated.
DOTS: Small...medium.

3. FABRIC AND CUTTING LAYOUTS

Press fabric. Unless fabric is pre-shrunk, shrink before cutting. Pay particular attention to washing or cleaning instructions with fabric. Circle cutting layout below for your view, size and fabric width.

FOR DOUBLE THICKNESS... Fold fabric with RIGHT side INSIDE. Place pattern on WRONG side of fabric.

FOR SINGLE THICKNESS... Place pattern on RIGHT side of fabric.
FOR NAP OR ONE-WAY DESIGN FABRICS... Use "with nap" cutting layout BEFORE CUTTING... Pin all pattern pieces on fabric as in cutting layouts. Cut through pattern and fabric on cutting lines... cut notches out from cutting line... margins will fall away.

4. MARK AND SEW

Keep pattern pinned to fabric. Mark with tracing wheel and dressmaker's tracing paper, chalk or tailor's tacks. See Simplicity Sewing Book: Remove pattern from fabric and read directions on each piece as you sew.

STAY-STITCH... Machine-stitch through single thickness of fabric to prevent stretching of bias or curved edges... done on seam line or 1/8" (3mm) from

seam line within the seam allowance. Stay-stitching is shown only in the first illustration.

PIN or BASTE SEAMS... Match notch 1 to 1, 2 to 2, etc. Use hand or machine-basting.

STITCH SEAMS... In direction of arrows on pattern. Press open unless otherwise stated. See Simplicity Sewing Book for additional sewing details.

Disregard any perforations on tissue pattern pieces

cutting layouts

- key:**
- black is fabric.
 - white is pattern printed side up.
 - grey is pattern printed side down.
 - solid outline is fabric cut without a pattern piece.

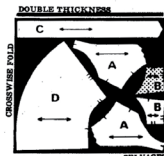
(The metric equivalent is in parenthesis)

GENERAL NOTE: When pattern pieces extend beyond fold of fabric, cut out all pieces except pieces that extend; then open out fabric and on single thickness cut extending pieces on right side of fabric in posit shown.

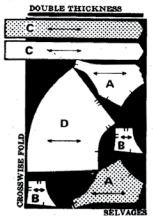
IMPORTANT: This style without darts is sized for stretch knits only. It has a close to the body fit. See Pick-A-Knit Rule and tissue chart.

short dress

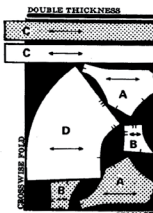
44" 45" (115cm) fabric
without nap
all sizes



58" 60" (150cm) fabric
without nap
size 8

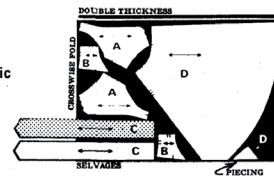


58" 60" (150cm) fabric
without nap
sizes 10, 12, 14, 16



long dress

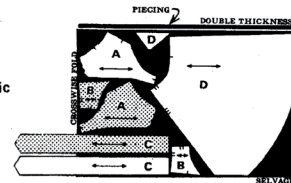
44" 45" (115cm) fabric
without nap
size 8



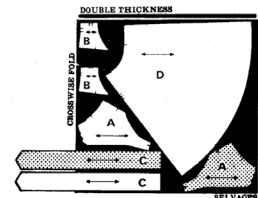
NOTE: Piece D as shown, allowing for seam.

Piece D as shown, allowing for seam.

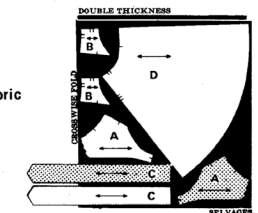
44" 45" (115cm) fabric
without nap
sizes 10, 12, 14, 16



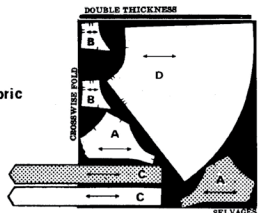
54" (140cm) fabric
without nap
all sizes




58" 60" (150cm) fabric
without nap
sizes 8, 10, 12



58" 60" (150cm) fabric
without nap
sizes 14, 16



5404 sewing directions

 Shaded area is right side of fabric

The metric equivalent for inches is in parenthesis:
1/4" (6mm), 3/8" (9mm), 1/2" (1.2cm) and 5/8" (1.5cm).

NOTE: Stitch 5/8" seams, unless otherwise stated, matching same numbered notches.

THIS STYLE IS SIZED FOR STRETCH KNITS ONLY. IT HAS A CLOSE TO THE BODY FIT.

FOLLOW THESE FEW SIMPLE RULES FOR KNIT FABRICS:

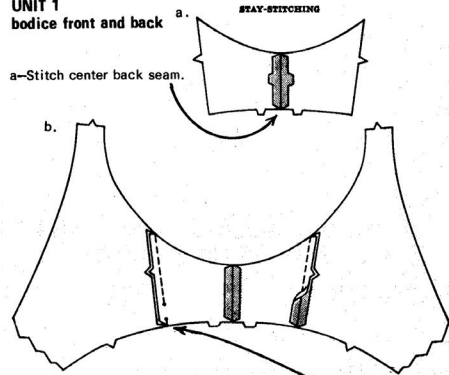
Use loose but balanced tension and 10 to 12 stitches per inch (2.5cm).

Use nylon or polyester thread and a fine needle.

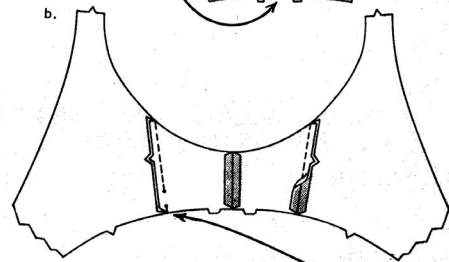
For zig-zag machine, stitch seams with a narrow zig-zag stitch.

long or short dress

UNIT 1 bodice front and back

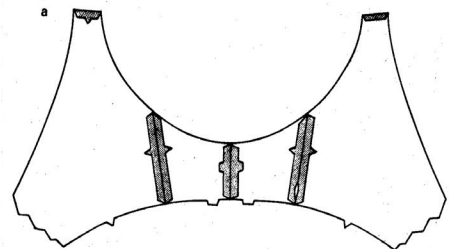


a—Stitch center back seam.

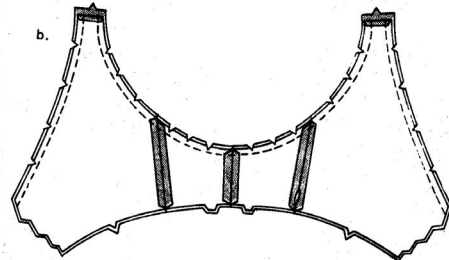


b—Stitch front to back at side seams, leaving RIGHT side seam open between small dots, as shown.

UNIT 2 bodice front and back facings

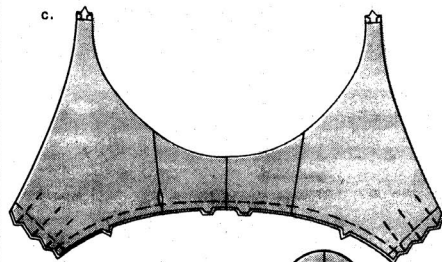


a—Stitch seams of facing same as bodice, as shown. Press under 5/8" on center back edges, as shown; trim to 1/4".

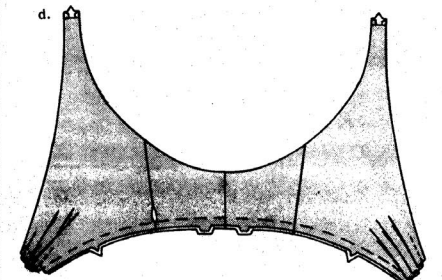


b—With RIGHT sides together, pin facing to bodice, matching centers and seams.

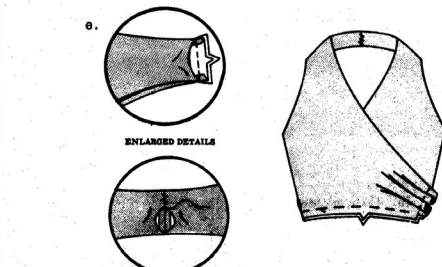
Stitch unnotched edges, as shown. Trim seams; clip curves.



c—Turn RIGHT side out; press. Baste raw edges together, as shown. Baste along solid lines of tucks. Slip-stitch RIGHT side opening edges together, as shown.



d—On facing side, make tucks. Press the two upper tucks down, press the lower tuck up. Machine-stitch along seam line across ends of tucks. Trim away seam allowance at lower edge of front as far as small dots, as shown (You have trimmed away a 5/8" square).



e—With RIGHT sides together, stitch center back seam, being careful not to catch in pressed edges of facing. Trim seam; press open. Slip seam allowance under facing. Slip-stitch center back edge of facing together.

UNIT 3 tie ends

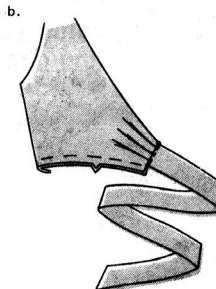
a—Press under 5/8" on straight end of tie end; trim to 1/4". Fold tie end in half, lengthwise, with RIGHT sides together. Stitch long edge and slanted end in 3/8" seam. Trim seam and corners.

Printed in U.S.A.
© Copyright 1972 by Simplicity Pattern Co. Inc.

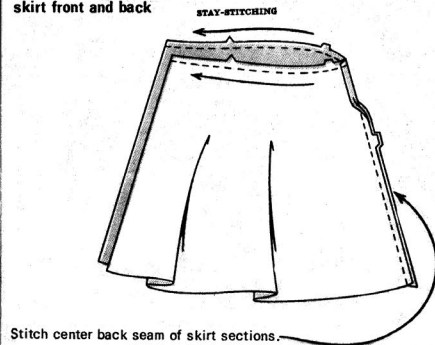
b—Turn tie end; press.

Slip front ends (tucked ends) of bodice between opening in tie end, matching seam lines and small and medium dots.

Stitch close to pressed end of tie end thru all thicknesses.



UNIT 4 skirt front and back



Stitch center back seam of skirt sections.

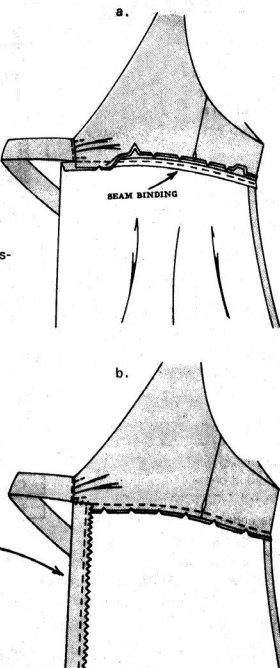
stitching skirt unit to bodice

a—With RIGHT sides together, pin skirt to bodice, matching centers and small dots. Stitch. To prevent waistline seam from stretching, stitch center of straight seam binding along seam on skirt side. Trim seam; clip curves (do not clip tape.) Press seam down, pressing under 5/8" on remaining edge of skirt, as shown.

b—Stitch 1/4" from front edge of skirt and pink or stitch stretch lace 1/4" over raw edge.

Press front edge to INSIDE along fold line, forming facing.

Slip-stitch facing to bodice seam.

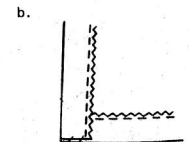
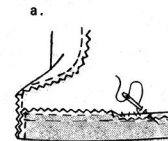


hem

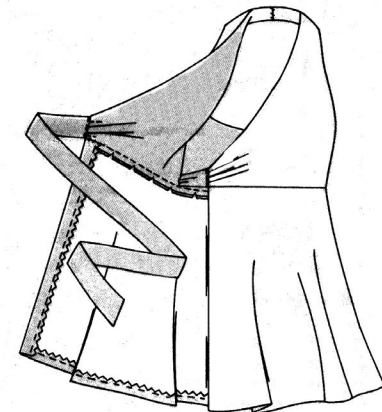
a—Mark length. Open out front facing. Press up hem along marking. Mark depth of hem; trim evenly. Machine-stitch 1/4" from raw edge of hem and pink ...

OR
stitch stretch lace 1/4" over raw edge. Baste 1/2" from raw edge. Turn hem back 1/4" and slip-stitch to skirt, by inserting needle in underside of hem and then picking up one thread in skirt.

b—Press hem flat over stitching. Press facing to INSIDE; slip-stitch to hem.



finishing

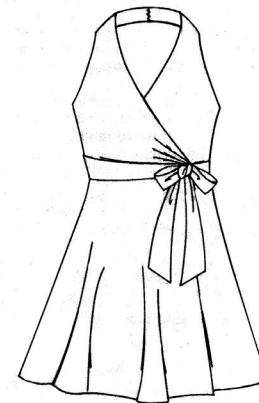


Bring LEFT tie end thru opening in RIGHT side seam.

Lap RIGHT front over LEFT.

Bring tie ends around back.

Tie ends at LEFT side, as shown.

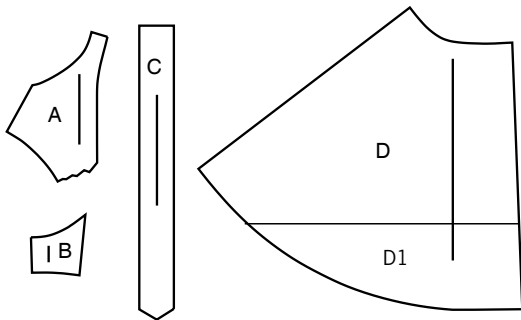


Simplicity®

S9793

Thank you for purchasing this Simplicity pattern.
We made every effort to provide you with a high quality product.

5 PIECES



A BODICE FRONT-A,B
B BODICE BACK-A,B
C TIE END-A,B
D (D1) SKIRT FRONT AND BACK-A,B

SUPPLEMENTAL CUTTING LAYOUTS

General Directions

The Pattern

- SYMBOLS**
- GRAIN LINE Place on straight grain of fabric parallel to selvage
 - PLACE SOLID LINE on fold of fabric.
 - CENTER FRONT OR BACK of garment.
 - NOTCHES
 - DOTS
 - CUTTING LINE
 - LENGTHEN OR SHORTEN LINES

SEAM ALLOWANCE: 5/8" (1.5cm) unless otherwise stated is included but not printed on MULTI-SIZE PATTERNS. Mark your size with colored felt tip pen. See chart on tissue for how to use MULTI-SIZE PATTERNS.

ADJUST IF NEEDED
Make adjustments before placing pattern on fabric.

TO LENGTHEN:
Cut pattern between lengthen or shorten lines. Spread pattern evenly, the amount needed and tape to paper.

TO SHORTEN:
At lengthen or shorten lines, make an even pleat taking up amount needed. Tape in place.

When lengthen or shorten lines are not given, make adjustments at lower edge of pattern.

Cutting/Marking

BEFORE CUTTING:
PRESS pattern pieces with a warm dry iron. PRE-SHRINK fabric by pre-washing washables or steam-pressing non-washables.

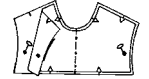
CIRCLE your cutting layout.
PIN pattern to fabric as shown in Cutting Layouts.

- FOR DOUBLE THICKNESS: Fold fabric with RIGHT sides together.
- FOR SINGLE THICKNESS: Place fabric RIGHT side up.
- FOR PILE, SHADED OR ONE WAY DESIGN FABRICS: Use "with nap" layouts

AFTER CUTTING:
Transfer markings to WRONG side of fabric before removing pattern. Use pin and chalk method or dressmaker's tracing paper and wheel.

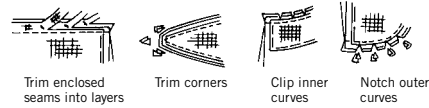
To Quick Mark:

- Snip edge of fabric to mark notches, ends of fold lines and center lines.
- Pin mark dots.



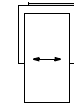
Sewing

- SEW garment following **Sewing Directions**.
- PIN or machine-baste seams matching notches.
- STITCH 5/8" (1.5 cm) seams unless otherwise stated.
- PRESS seams open unless otherwise indicated clipping when necessary so seams will lie flat.
- TRIM seams to reduce bulk, as shown below.



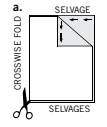
SPECIAL CUTTING NOTES

★ If layout shows a piece extending past fold, cut out all pieces except piece that extends.

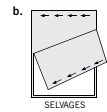


Open out fabric to single thickness. Cut extending piece on RIGHT side of fabric in position shown.

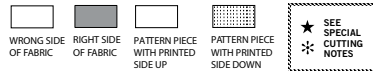
* Mark small arrows along both selvages indicating direction of nap or design. Fold fabric crosswise with RIGHT sides together, and cut along fold (a).



Turn one fabric layer around so arrows on both layers go in the same direction. Place RIGHT sides together (b).



Cutting Layouts

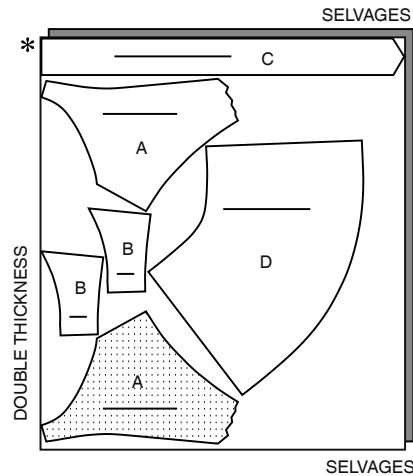


POSITION OF PATTERN PIECES MAY VARY SLIGHTLY ACCORDING TO YOUR PATTERN SIZE

SHORT DRESS

USE PIECES A B C D

60" (150CM)
WITH NAP
ALL SIZES

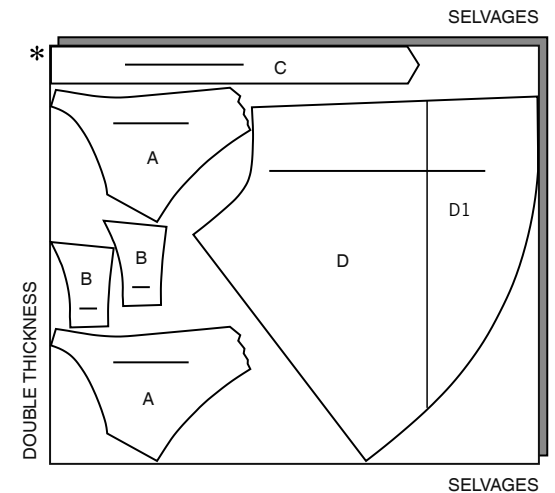


NOTE: BEFORE CUTTING FABRIC, JOIN PIECES IN PARENTHESIS TO CORRESPONDING PIECES FOLLOWING INSTRUCTIONS ON TISSUE PATTERN.

LONG DRESS

USE PIECES A B C D (D1)

60" (150CM)
WITH NAP
ALL SIZES





Congrats!

You've completed your sewing adventure

SHARE YOUR LOOK



Post your pattern and tag us
@simplicity_creative_group and **#simplicitypatterns**
for a chance to be featured on our social media.

Look for more PDF patterns at **simplicity.com**

Have a question or need help with your sewing project call us at
1-888-588-2700

Simplicity
by design

Simplicity ©2023 a division of IG Design Group Americas Inc. • Atlanta, GA 30342 USA www.thedesigngroup.com • All Rights Reserved. www.simplicity.com • Made in the U.S.A. Fabriqué aux États-Unis.

To be used for individual private home use only and not for commercial or manufacturing purposes. • A usage privé seulement et non à des fins commerciales ou de production en série. • Para uso privado solamente, no se puede utilizar con propósitos de comercialización o de producción en serie.