



Very Easy

MISSES' JUMPSUIT IN TWO LENGTHS												
Suggested Fabrics: Canvas, Corduroy, Cotton Types, Denim, Double Knits, Lightweight Wool Types, Linen Types, Poplin, Pique.												
Notions: Views 1,2: 22" (56cm) zipper (adjust to fit), two ½" (1.3cm) buttons, one pkg. of ½" (1.3cm) bias seam binding.												
Sizes	6	8	10	12	14	16	18	20	22	24		
European	32	34	36	38	40	42	44	46	48	50		
BODY MEASUREMENTS: Select pattern size based on body measurements												
Bust	30½	31½	32½	34	36	38	40	42	44	46	Ins.	
Waist	23	24	25	26½	28	30	32	34	37	39	"	
Hip-9" below waist	32½	33½	34½	36	38	40	42	44	46	48	"	
Back-neck to waist	15½	15¾	16	16¼	16½	16¾	17	17¼	17½	17¾	"	
Jumpsuit 1 (includes opt. pockets and belt)												
45**	2½	2¾	3	3¼	3½	3¾	3¾	3¾	3¾	3¾	Yds.	
60**	2½	2½	2½	2½	2½	2½	2½	2¾	2¾	3	"	
Jumpsuit 2 (includes opt. pockets and belt)												
45**	2¼	2¼	2¼	2¼	2½	2½	2¾	2¾	2¾	2¾	Yds.	
60**	1½	1½	1½	1½	1¾	2	2½	2½	2½	2½	"	
FINISHED GARMENT MEASUREMENTS (Includes Design and Wearing Ease)												
1,2 Bust	33½	34½	35½	37	39	41	43	45	47	49	Ins	
1,2 Waist	32	33	34	35½	37½	39½	41½	43½	45½	47½	"	
1,2 Hip	36½	37½	38½	40	42	44	46	48	50	52	"	
Width, each leg												
Jumpsuit 1	14½	15	15½	16	16½	17	17½	18	18½	19	Ins.	
Jumpsuit 2	21	21½	22	22½	23	23½	24	24½	25	25½	"	
Finished back length from base of neck												
Jumpsuit 1	53½	54	54½	55	55½	56	56½	57	57½	58	Ins.	
Jumpsuit 2	34	34½	35	35½	36	36½	37	37½	38	38½	"	

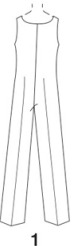
*with nap **without nap

Very Easy

Très Facile

COMBINAISON EN DEUX LONGUEURS POUR JEUNES FEMMES												
Tissus Conseillés: Canevas, Velours côtelé, Cottonnades, Denim, Tricot double, Sortes de lainages légers, Sortes de lin, Poplin fine, Piqué.												
Merçerie: Modèles 1,2: Fermeture à glissière de 56cm (adaptez pour ajuster), 2 boutons de 1.3cm, 1 paquet de extra-fort de biais de 1.3cm.												
Tailles	6	8	10	12	14	16	18	20	22	24		
Françaises	34	36	38	40	42	44	46	48	50	52		
Européen	32	34	36	38	40	42	44	46	48	50		
MESURES DU CORPS: Choisissez la taille du patron basée sur les mesures du corps												
Poitrine	78	80	83	87	92	97	102	107	112	117	cm	
Taille	58	61	64	67	71	76	81	87	94	99	"	
Hanches (23cm au-dessous de la taille)												
	83	85	88	92	97	102	107	112	117	122	cm	
Dos du cou à la taille	39.5	40	40.5	41.5	42	42.5	43	44	44	44.5	"	
Combinaison 1 (y compris poches facultatif et ceinture)												
115cm*	2.4	2.6	2.8	2.9	3.1	3.2	3.5	3.5	3.6	3.6	m	
150cm*	1.9	2.0	2.0	2.0	2.0	2.4	2.4	2.6	2.6	2.8	"	
Combinaison 2 (y compris poches facultatif et ceinture)												
115cm*	2.0	2.1	2.1	2.1	2.2	2.2	2.6	2.6	2.7	2.7	m	
150cm*	1.4	1.4	1.4	1.5	1.6	2.0	2.0	2.0	2.1	2.2	"	
MESURES DES VÊTEMENTS FINI (Motif et aisance de port compris)												
1,2 Poitrine	85	88	90	94	99	104	109	114	119	124	cm	
1,2 Taille	81	84	86	90	95	100	105	110	116	121	"	
1,2 Hanches	93	95	98	102	107	112	117	122	127	132	"	
Largeur, chaque jambe												
Combinaison 1	37	38	39	41	42	43	44	46	47	48	cm	
Combinaison 2	53	55	56	57	58	60	61	62	64	65	"	
Longueur finie – dos, votre nuque à l'ourlet												
Combinaison 1	136	137	138	140	141	142	144	145	146	147	cm	
Combinaison 2	86	88	89	90	91	93	94	95	97	98	"	

*avec sens **sans sens



1



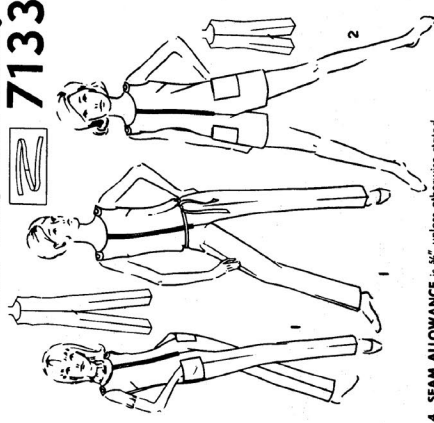
2



1,2

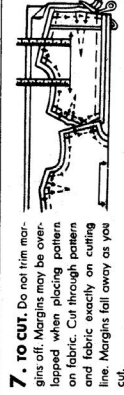
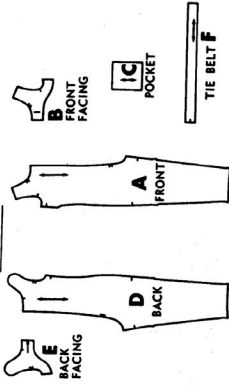
AUTHENTIC VINTAGE PATTERN REPRODUCTION INCLUDES ADDITIONAL SIZE OPTIONS AND CUTTING LAYOUTS

Simplicity PRIMER Guide for Cutting—Sewing—Detailed Dressmaking **7133**



LIST OF PIECES SELECT YOUR PATTERN PIECES, SEE CUTTING LAYOUTS AND NOTES VIEW 1 AND 2-A,B,C,D,E,F

6 PIECES GIVEN
JUMP-SUIT



7. TO CUT. Do not trim margins off. Margins may be overlapped when placing pattern on fabric. Cut through pattern and fabric exactly on cutting line. Margins fall away as you cut.

SEWING INSTRUCTIONS

- 1. READ INSTRUCTIONS** printed on each pattern piece as you work.
- 2. WORK IN UNITS** according to the sewing directions.
- 3. STAY-STITCHING** is a line of regular machine-stitching (in one thickness of fabric) on, or close to the seam line within the seam allowance. It prevents stretching.

Stay-stitching will be shown **only the first time** a section of garment is illustrated in the instructions.

4. SEAM ALLOWANCE is $\frac{1}{2}$ " unless otherwise stated.

5. TO JOIN SEAMS, match notches with same numbers, 1 to 1, 2 to 2, etc. Press each seam before it is joined to another. Press in same direction as it was stitched.

6. STITCHING DIRECTIONS are shown by arrows on printed seam lines. Note: We suggest machine-basting, using longest machine stitch. Note: Press seams open unless otherwise stated.

THE SIMPLICITY SYSTEM OF Sewing is now on Sale.
Simplicity Unit System of Sewing

HOW TO USE YOUR SIMPLICITY PATTERN

1. SELECT THE PATTERN PIECES for the view you are making. These pieces are listed in the box to the right.

2. PRESS THE PATTERN PIECES.

3. COMPARE YOUR BODY MEASUREMENTS with those on back of the envelope.

4. IF ALTERATIONS ARE NECESSARY, they should be made in the pattern before placing on fabric. **Caution:** In addition to body measurements, ease is allowed in the pattern for garment style and comfortable wearing. Alterations are made where to make simple alterations such as:



To Shorten
Crease on printed line. Fold piece as deep as you want to shorten. Press. Shorten to $\frac{1}{2}$ " deep to shorten $\frac{1}{4}$ ".



To Lengthen

Put pattern on printed line. Place paper underneath. Spread pattern the necessary amount and pin to paper.

For Children's Wear, alter at lower edge except in shorts and slacks, etc., when crotch needs alterations, in which case alter above the crotch.

See the **Simplicity Sewing Book** for other alterations.

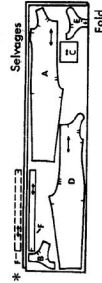
5. PREPARE FABRIC. Press creases out of fabric. Unless fabric is pre-shrunk, sponge or sink before cutting.

To Straighten End. Slip selvage and pull

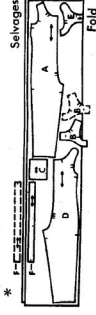
Cutting Layouts

View 1 Jump-Suit

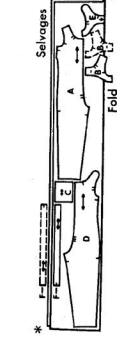
NOTE: Pockets C and tie belt F are optional.



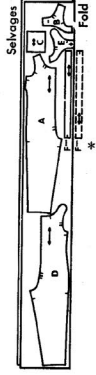
44'' 45'' Fabric
With Nap
Sizes 10, 12, 14



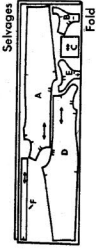
44'' 45'' Fabric
With Nap
Size 16



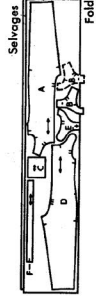
41'' 42'' Fabric
With Nap
Sizes 10, 12



35'' 36'' Fabric
With Or Without
Nap
Sizes 14, 16



44'' 45'' Fabric
Without Nap
Sizes 10, 12



44'' 45'' Fabric
Without Nap
Sizes 14, 16

8. MARK FABRIC. Construction details must be marked on the fabric. Mark center front and back with a clip at top and bottom. **Tailor's Tacks.** Use long double thread without knot. Take 2 small

stitches up pattern and both fabric layers, leaving long loop. Cut top loops and remove pattern. Separate fabric, clip threads between fabric layers, leaving thread tufts on both layers.

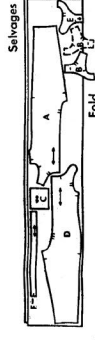
TRACING WHEEL AND DRESS-MAKER'S TRACING PAPER. Markings should be made on wrong side of fabric. Use ruler to guide straight lines; mark curves freehand.

For doubled fabric: lay one piece of tracing paper face up under the wrong side of fabric. Do not remove pattern until ready to work on each piece.

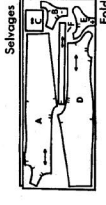
For single thickness: lay one piece of tracing paper face up under the wrong side of fabric. Do not remove pattern until ready to work on each piece.

GENERAL NOTE: WHEN PATTERN PIECES EXTEND BEYOND FOLD OF FABRIC, CUT OUT ALL PIECES EXCEPT PIECES THAT EXTEND; THEN OPEN OUT FABRIC AND ON SINGLE THICKNESS, CUT EXTENDING PIECES ON RIGHT SIDE OF FABRIC IN POSITION SHOWN.

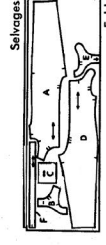
* TIE BELT - F for nap or one way design fabrics, cut 2 F in position shown on single thickness of fabric, with nap or design running in the same direction.



41'' 42'' Fabric
Without Nap
Sizes 14, 16



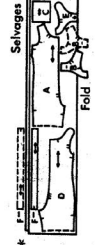
38'' Fabric
Without Nap
All Sizes



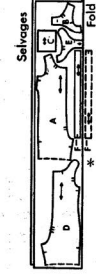
54'' Fabric
Without Nap
Size 16

View 2 Jump-Suit

NOTE: Pockets C and tie belt F are optional.



35'' 36'' Fabric
With Or Without
Nap
Sizes 10, 12, 14



35'' 36'' Fabric
With Or Without
Nap
Size 16

7133

SHADED AREA IS
RIGHT SIDE OF FABRIC

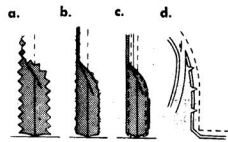
SUGGESTED SEAM FINISHES

a-Pink seams.

b-Overcast separately.

c-Turn in edges 1/8" and
stitch separately.

d-For enclosed seams, trim
seams and corners; clip curves.

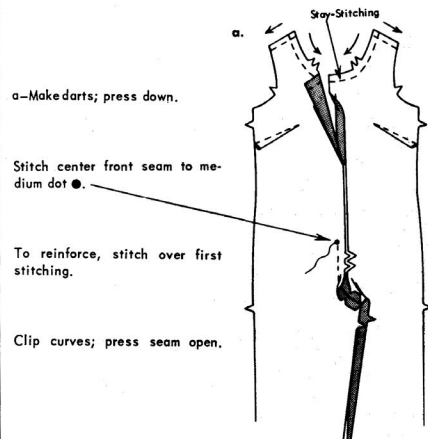


NOTE: For heavy fabric, use bias seam binding to encase inner
edges of facings.

NOTE: Pockets and tie belt are optional.

JUMP-SUIT VIEW 1

UNIT 1 - FRONT



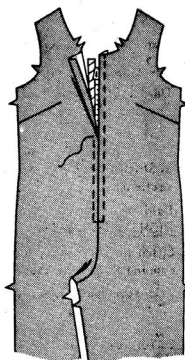
ZIPPER

b-Press under 5/8" on center
front opening edges.

Pin closed zipper under opening
edges, placing tab end 1/2" be-
low seam line at neck edge, hav-
ing opening edges meet at center
of zipper.

Trim tape of zipper below seam
line at neck edge. Baste.

Stitch, using a zipper foot.



UNIT 2 - FRONT FACING

a-Stitch 1/4" from long un-
notched edge of facing.

Press under edge along stitching,
clipping curves and stitch.

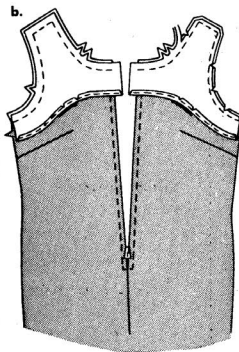


b-With RIGHT sides together,
pin facing to front, matching
centers, having raw edges even.

(Front edges of facing extend
5/8" beyond the front opening
edges of garment.)

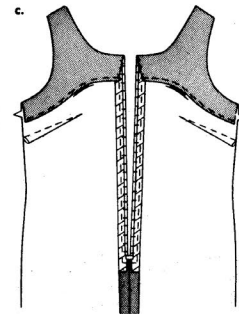
Stitch armhole, shoulder and
neck edges.

Trim seam and corners; clip
curves.



c-Press facing to INSIDE, press-
ing under and slip-stitching center
front edges, as shown.

Sew hook and eye at neck edge.



UNIT 3 - POCKETS

a-Stitch under 1/4" on upper
edge of pocket.

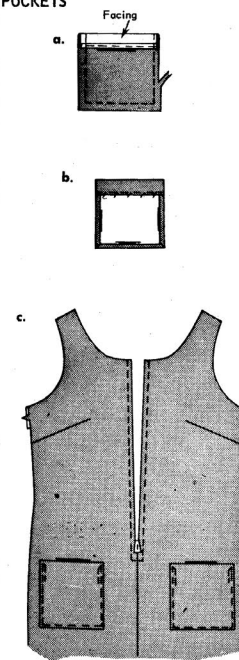
Turn upper edge to OUTSIDE
along fold line, forming facing.
Stitch along seam line on all raw
edges; trim raw edges to 1/4".

b-Press facing to INSIDE, press-
ing under remaining raw edges
along stitching.

Slip-stitch facing.

c-On OUTSIDE, pin pockets
along pocket lines in front.

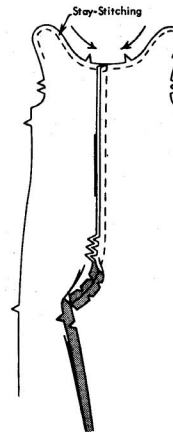
Stitch close to side and lower
edges, reinforcing stitching at
upper corners.



UNIT 4 - BACK

Stitch center back seam.

Reinforce, clip and press same
as for front.



UNIT 5 - BACK FACING

a-Stitch 1/4" from long un-
notched edge of facing.

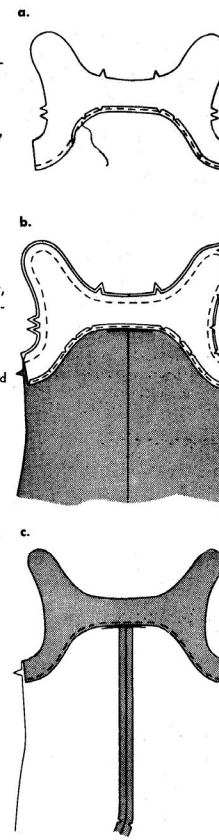
Press under edge along stitching,
clipping curves and stitch.

b-With RIGHT sides together,
pin facing to back, matching cen-
ters, having raw edges even.

Stitch armhole, shoulder and
neck edges.

Trim seam; clip curves.

c-Press facing to INSIDE.



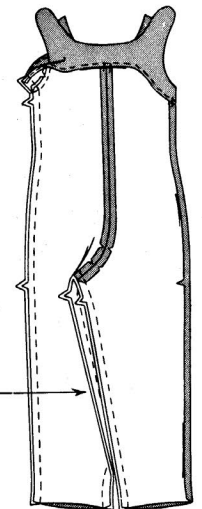
SIDE AND INNER LEG SEAMS

Open out facings at armhole
edges.

Stitch entire side seams, as
shown.

Press facings to INSIDE; tack
to center back and side seams.

Stitch inner leg seam.

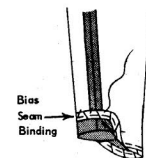


LEG HEMS

Press up hem.

Stitch one edge of bias seam
binding 1/4" over raw edge (or
stitch under 1/4" on raw edge).

Slip-stitch hem.



FINISHING

Lap back shoulder extensions over front, matching shoulder lines.

Sew buttons at small dots ● thru all thicknesses.

On INSIDE, fasten front shoulder with snaps.

TIE BELT

a-Stitch notched ends of belt
sections.

Fold belt in half lengthwise,
RIGHT sides together.

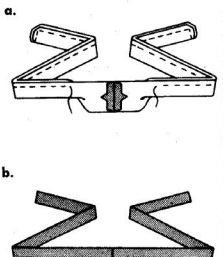
Stitch in 3/8" seam, leaving an
opening to turn, as shown.

Trim seam and corners.

b-Turn belt; press.

Slip-stitch opening.

Wear belt, as shown on front of
envelope.



JUMP-SUIT VIEW 2

Make same as for VIEW 1, see Units 1 thru 5.

Printed in U.S.A.

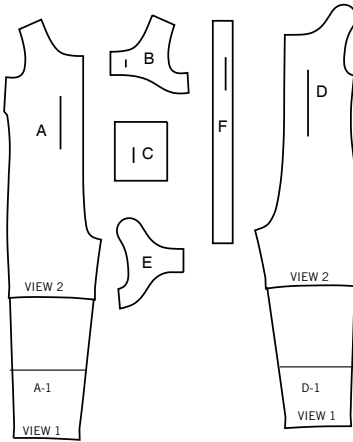
© Copyright 1967 by Simplicity Pattern Co., Inc.

1/5/22 4:06 PM

Simplicity® S9792

Thank you for purchasing this Simplicity pattern.
We made every effort to provide you with a high quality product.

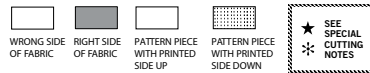
6 PIECES



A(A1) FRONT (View 2 cutting line)
B FRONT FACING A
C POCKET
D(D1) BACK (View 2 cutting line)
E BACK FACING
F TIE BELT

SUPPLEMENTAL CUTTING LAYOUTS

Cutting Layouts



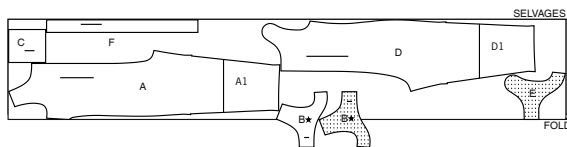
POSITION OF PATTERN PIECES MAY VARY
SLIGHTLY ACCORDING TO YOUR PATTERN SIZE

NOTE: BEFORE CUTTING FABRIC, JOIN PIECES IN PARENTHESIS TO
CORRESPONDING PIECES FOLLOWING INSTRUCTIONS ON TISSUE PATTERN.

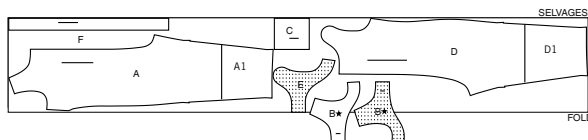
LONG JUMPSUIT (INCLUDES OPTIONAL POCKETS AND BELT)

USE PIECES A(A1) B C D(D1) E F

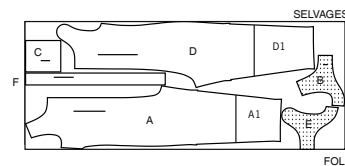
45" (115CM) WITH NAP
SIZES 6 8 10 12 14 16



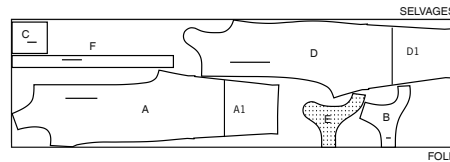
45" (115CM) WITH NAP
SIZES 18 20 22 24



60" (150CM)
WITH NAP
SIZES 6 8 10 12 14



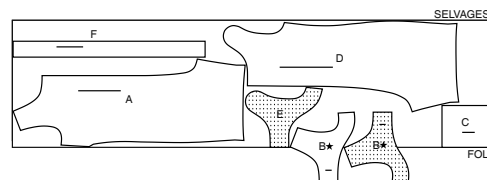
60" (150CM) WITH NAP
SIZES 16 18 20 22 24



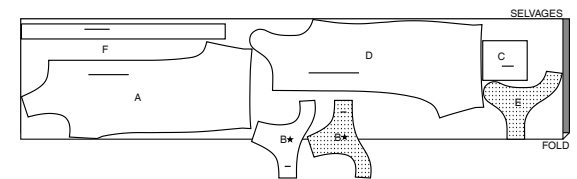
SHORT JUMPSUIT (INCLUDES OPTIONAL POCKETS AND BELT)

USE PIECES A B C D E F

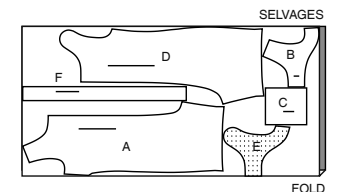
45" (115CM)
WITH NAP
SIZES 6 8 10 12
14 16



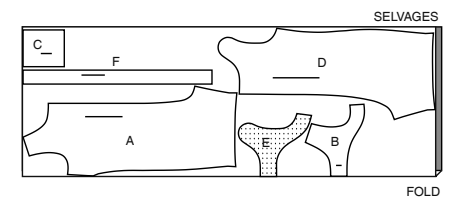
45" (115CM)
WITH NAP
SIZES 18 20 22 24



60" (150CM)
WITH NAP
SIZES 6 8 10 12 14

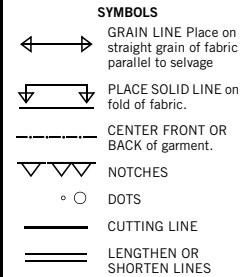


60" (150CM)
WITH NAP
SIZES 16 18 20 22 24



General Directions

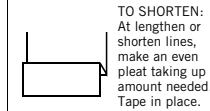
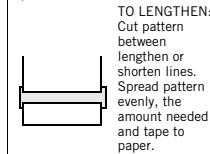
The Pattern



SEAM ALLOWANCE: 5/8" (1.5cm) unless otherwise stated is included but not printed on MULTI-SIZE PATTERNS. Mark your size with colored felt tip pen. See chart on tissue for how to use MULTI-SIZE PATTERNS.

ADJUST IF NEEDED

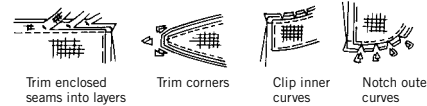
Make adjustments before placing pattern on fabric.



When lengthen or shorten lines are not given, make adjustments at lower edge of pattern.

Sewing

- SEW garment following **Sewing Directions**.
- PIN or machine-baste seams matching notches.
- STITCH 5/8" (1.5 cm) seams unless otherwise stated.
- PRESS seams open unless otherwise indicated clipping when necessary so seams will lie flat.
- TRIM seams to reduce bulk, as shown below.



Cutting/Marking

BEFORE CUTTING:

PRESS pattern pieces with a warm dry iron. PRE-SHRINK fabric by pre-washing washables or steam-pressing non-washables.

CIRCLE your cutting layout.

PIN pattern to fabric as shown in Cutting Layouts.

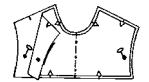
- FOR DOUBLE THICKNESS: Fold fabric with RIGHT sides together.
- FOR SINGLE THICKNESS: Place fabric RIGHT side up.
- FOR PILE, SHADED OR ONE WAY DESIGN FABRICS: Use "with nap" layouts

AFTER CUTTING:

Transfer markings to WRONG side of fabric before removing pattern. Use pin and chalk method or dressmaker's tracing paper and wheel.

To Quick Mark:

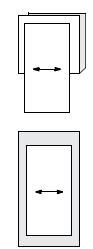
- Snip edge of fabric to mark notches, ends of fold lines and center lines.
- Pin mark dots.



SPECIAL CUTTING NOTES

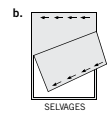
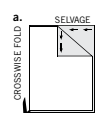
★ If layout shows a piece extending past fold, cut out all pieces except piece that extends.

Open out fabric to single thickness. Cut extending piece on RIGHT side of fabric in position shown.



✱ Mark small arrows along both selvages indicating direction of nap or design. Fold fabric crosswise with RIGHT sides together, and cut along fold (a).

Turn one fabric layer around so arrows on both layers go in the same direction. Place RIGHT sides together (b).





Congrats!

You've completed your sewing adventure

SHARE YOUR LOOK



Post your pattern and tag us
@simplicity_creative_group and **#simplicitypatterns**
for a chance to be featured on our social media.

Look for more PDF patterns at **simplicity.com**

Have a question or need help with your sewing project call us at
1-888-588-2700



Simplicity ©2023 a division of IG Design Group Americas Inc. • Atlanta, GA 30342 USA www.thedesigngroup.com • All Rights Reserved. www.simplicity.com • Made in the U.S.A. Fabriqué aux États-Unis.

To be used for individual private home use only and not for commercial or manufacturing purposes. • A usage privé seulement et non à des fins commerciales ou de production en série. • Para uso privado solamente, no se puede utilizar con propósitos de comercialización o de producción en serie.