

easy-to-sew



MISSES' TOPS, SKIRT AND PANTS

Suggested Fabrics: Chambray, Cotton Types, Gingham, Linens, Poplin, Sateen, Tencel. **C** also in Cotton Lawn, Silky Types. **Lining A,B:** Lining Fabrics. **Interfacing:** Lightweight Fusible.

Notions: **A,B:** Four ½" (1.3cm) buttons. **C,D:** 9" (23cm) invisible zipper.

Sizes	4	6	8	10	12	14	16	18	20
European	30	32	34	36	38	40	42	44	46

BODY MEASUREMENTS: Select pattern size based on body measurements

Bust	29½	30½	31½	32½	34	36	38	40	42	Ins.
Waist	22	23	24	25	26½	28	30	32	34	"
Hip-9" below waist	31½	32½	33½	34½	36	38	40	42	44	"
Back-neck to waist	15¼	15½	15¾	16	16¼	16½	16¾	17	17¼	"

Top A	45**	%	%	%	%	¾	%	%	1	1	Yds.
60**	%	%	%	%	%	%	%	%	%	%	"

Interfacing - 20", ¾ yd.

Lining A,B	45***	%	%	%	%	%	%	%	%	%	Yds.
------------	-------	---	---	---	---	---	---	---	---	---	------

Top B	45**	1½	1½	1½	1½	1½	1½	1½	1½	1½	Yds.
60**	1	1	1	1	1	1	1	1	1	1	"

Interfacing - 20", ¾ yd.

Skirt C	45**	1%	1%	1%	1%	1%	1%	1%	1%	1%	Yds.
60**	1%	1%	1%	1%	1%	1%	1%	1%	1%	1%	"

Contrast (Yoke front and back, Middle front and back) - 45/60**, 1 yd.

Interfacing C,D - 20", ½ yd.

Pants D	45**	2%	2%	2½	2½	2½	2½	2½	2½	2½	Yds.
60**	1%	1½	1½	1½	1½	1½	2	2	2	2	"

NOTE: Please refer to the sewing instructions for **FINISHED GARMENT MEASUREMENTS**.

*with nap **without nap

Easy

HAUTS, JUPES ET PANTALON POUR JEUNES FEMMES

Tissus Conseillés: Chambray, Cotonnades, Vichy, Toile de lin, Popeline, Satin de coton, Tencel. **C** aussi en Linon de coton, Tissus soyeux. **Doublure A,B:** Tissus à doublure. **Entoilage:** Thermocollant léger.

Mercerie: **A,B:** 4 boutons de 1.3cm. **C,D:** Fermeture à glissière invisible de 23cm.

Tailles	4	6	8	10	12	14	16	18	20
Françaises	32	34	36	38	40	42	44	46	48
Européen	30	32	34	36	38	40	42	44	46

MESURES DU CORPS: Choisissez la taille du patron basée sur les mesures du corps

Poitrine	75	78	80	83	87	92	97	102	107	cm
----------	----	----	----	----	----	----	----	-----	-----	----

Taille	56	58	61	64	67	71	76	81	87	"
--------	----	----	----	----	----	----	----	----	----	---

Hanches (23cm au-dessous de la taille)

	80	83	85	88	92	97	102	107	112	cm
--	----	----	----	----	----	----	-----	-----	-----	----

Dos du cou à la taille	38.5	39.5	40	40.5	41.5	42	42.5	43	44	"
------------------------	------	------	----	------	------	----	------	----	----	---

Haut A	115cm*	0.6	0.6	0.6	0.6	0.7	0.8	0.8	0.8	0.8	m
150cm*	0.6	0.6	0.6	0.6	0.6	0.6	0.6	0.6	0.6	0.6	"

Entoilage - 51cm, 0.6m											
------------------------	--	--	--	--	--	--	--	--	--	--	--

Doublure A,B	115cm*	0.6	0.6	0.6	0.6	0.6	0.6	0.8	0.8	0.8	m
--------------	--------	-----	-----	-----	-----	-----	-----	-----	-----	-----	---

Haut B	115cm*	1.4	1.4	1.4	1.5	1.5	1.5	1.5	1.5	1.6	m
150cm*	0.9	0.9	0.9	0.9	0.9	0.9	1.0	1.0	1.0	1.0	"

Entoilage - 51cm, 0.8m											
------------------------	--	--	--	--	--	--	--	--	--	--	--

Jupe C	115cm*	1.7	1.7	1.7	1.7	1.7	1.7	1.7	1.7	1.7	m
150cm*	1.5	1.5	1.5	1.5	1.5	1.5	1.5	1.5	1.5	1.5	"

Contrast (L'epiement devant et dos, milieu devant et dos) - 115/150cm*, 0.9m

Entoilage C,D - 51cm, 0.5m

Pantalon D	115cm*	2.2	2.2	2.2	2.3	2.3	2.3	2.3	2.3	2.3	m
150cm*	1.3	1.3	1.4	1.4	1.4	1.4	1.8	1.8	1.8	1.8	"

NOTE: S'il vous plaît, reportez-vous aux instructions de couture pour les **MESURES DU VÊTEMENTS FINI**.

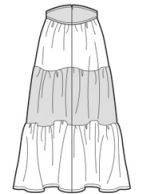
*avec sens **sans sens



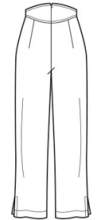
A



B



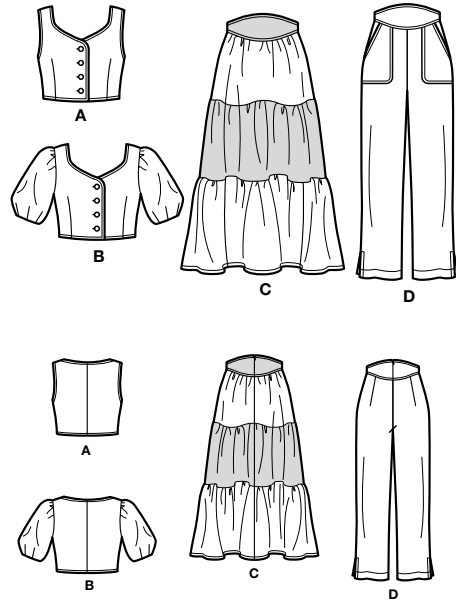
C



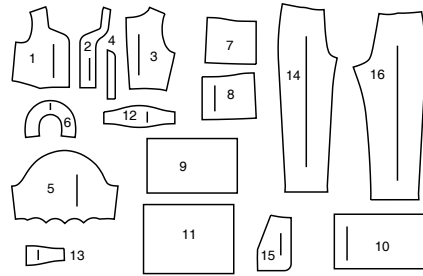
D

Simplicity®

Thank you for purchasing this Simplicity pattern.
We made every effort to provide you with a high quality product.



16 PIECES

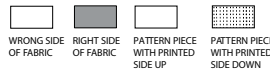


- 1 Front-A,B
2 Front Interfacing-A,B
3 Back-A,B
4 Buttonhole guide-A,B
5 Sleeve-B
6 Sleeve Facing-B
7 Upper Front-C
8 Upper Back-C
9 Middle Front-C
10 Middle Back-C
11 Lower Front and Back-C
12 Yoke Front-C,D
13 Yoke Back-C,D
14 Front-D
15 Pocket-D
16 Back-D

Sizes	4	6	8	10	12	14	16	18	20
European	30	32	34	36	38	40	42	44	46

FINISHED GARMENT MEASUREMENTS (Includes Design and Wearing Ease)										
A,B Bust	32	33	34	35	36½	38½	40½	42½	44½	Ins.
C,D Waist	23½	24½	25½	26½	28	30	32	34	36	*
C Hip	36	37	38	39	40½	42½	44½	46½	48½	*
D Hip	34½	35½	36½	37½	39	41	43	45	47	*
Width, lower edge										
Top A,B	24½	25½	26½	27½	29	31	33	35	37	Ins.
Width, each leg										
Pants D	14½	15	15½	16	16½	17	17½	18	18½	Ins.
Finished back length from base of neck										
Top A,B	14½	14½	14½	15	15½	15½	15½	16	16½	Ins.
Finished back length from waist										
Skirt C	32	32	32	32	32	32	32	32	32	Ins.
Finished side length from waist										
Pants D	37½	37½	37½	38	38½	38½	38½	39	39½	Ins.

Cutting Layouts

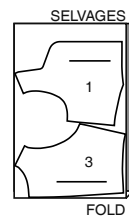
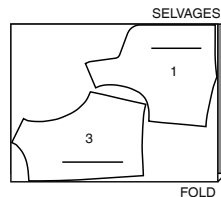


POSITION OF PATTERN PIECES MAY VARY
SLIGHTLY ACCORDING TO YOUR PATTERN SIZE

VIEW A

USE PIECES 1 3

45" (115CM)
WITH NAP
ALL SIZES

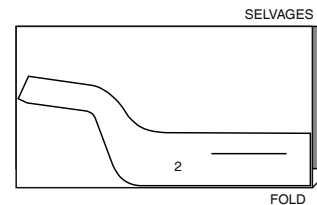


60" (150CM)
WITH NAP
ALL SIZES

INTERFACING A

USE PIECE 2

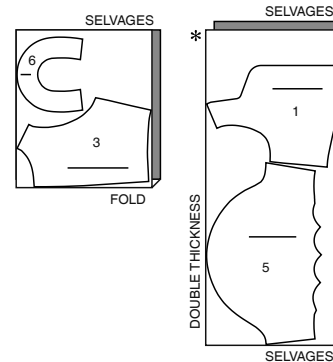
20" (51CM)
ALL SIZES



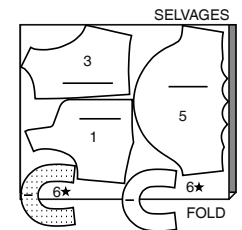
VIEW B

USE PIECES 1 3 5 6

45" (115CM)
WITH NAP
ALL SIZES



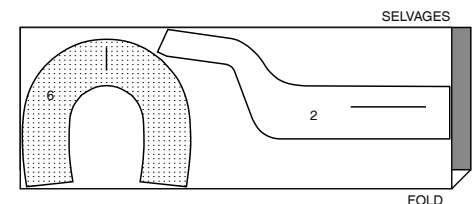
60" (150CM)
WITH NAP
ALL SIZES



INTERFACING B

USE PIECES 2 6

20" (51CM)
ALL SIZES



CUTTING LAYOUTS CONTINUED ON PAGE 2

General Directions

The Pattern

- SYMBOLS**
- GRAIN LINE: Place on straight grain of fabric parallel to selvage
 - PLACE SOLID LINE on fold of fabric.
 - CENTER FRONT OR BACK of garment.
 - NOTCHES
 - DOTS
 - CUTTING LINE
 - LENGTHEN OR SHORTEN LINES

SEAM ALLOWANCE: 5/8" (1.5cm) unless otherwise stated is included but not printed on MULTI-SIZE PATTERNS. Mark your size with colored felt tip pen. See chart on tissue for how to use MULTI-SIZE PATTERNS.

ADJUST IF NEEDED

Make adjustments before placing pattern on fabric.

TO LENGTHEN:
Cut pattern between lengthen or shorten lines. Spread pattern evenly, the amount needed and tape to paper.

TO SHORTEN:
At lengthen or shorten lines, make an even pleat taking up amount needed. Tape in place.

When lengthen or shorten lines are not given, make adjustments at lower edge of pattern.

Cutting/Marking

BEFORE CUTTING:

PRESS pattern pieces with a warm dry iron. PRE-SHRINK fabric by pre-washing washables or steam-pressing non-washables.

CIRCLE your cutting layout.

PIN pattern to fabric as shown in Cutting Layouts.

• FOR DOUBLE THICKNESS: Fold fabric with RIGHT sides together.

• FOR SINGLE THICKNESS: Place fabric RIGHT side up.

• FOR PILE, SHADED OR ONE WAY DESIGN FABRICS: Use "with nap" layouts

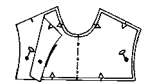
AFTER CUTTING:

Transfer markings to WRONG side of fabric before removing pattern. Use pin and chalk method or dressmaker's tracing paper and wheel.

To Quick Mark:

• Snip edge of fabric to mark notches, ends of fold lines and center lines.

• Pin mark dots.



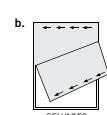
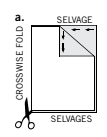
SPECIAL CUTTING NOTES

★ If layout shows a piece extending past fold, cut out all pieces except piece that extends.

Open out fabric to single thickness. Cut extending piece on RIGHT side of fabric in position shown.

* Mark small arrows along both selvages indicating direction of nap or design. Fold fabric crosswise with RIGHT sides together, and cut along fold (a).

Turn one fabric layer around so arrows on both layers go in the same direction. Place RIGHT sides together (b).

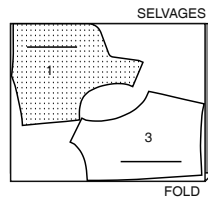


S9791

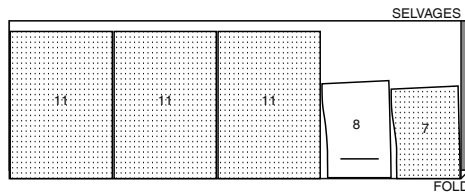
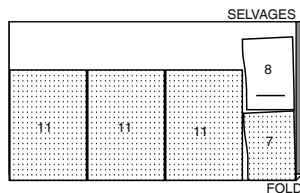
2 of 4

LINING A,B

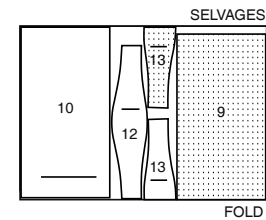
USE PIECES 1 3

45" (115CM)
WITHOUT NAP
ALL SIZES**VIEW C**

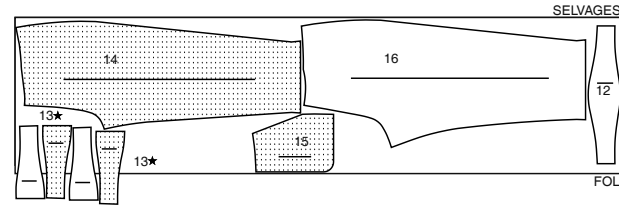
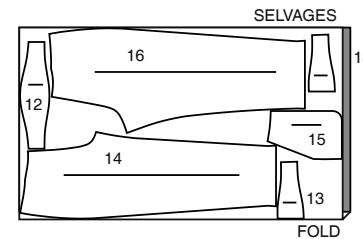
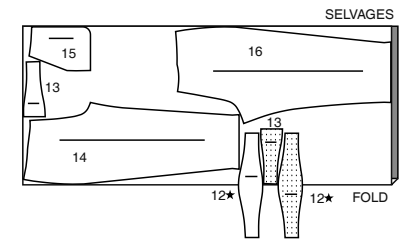
USE PIECES 7 8 11

45" (115CM)
WITH NAP
ALL SIZES60" (150CM)
WITH NAP
ALL SIZES**CONTRAST: WAIST BAND, MIDDLE TIER**

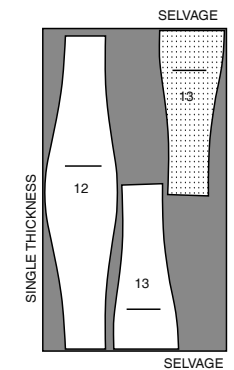
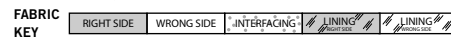
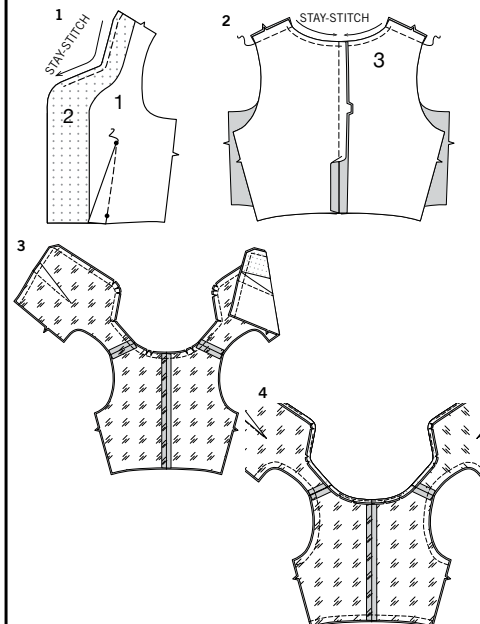
USE PIECES 9 10 12 13

45" TO 60" (115CM TO 150CM)
WITH NAP
ALL SIZES**VIEW D**

USE PIECES 12 13 14 15 16

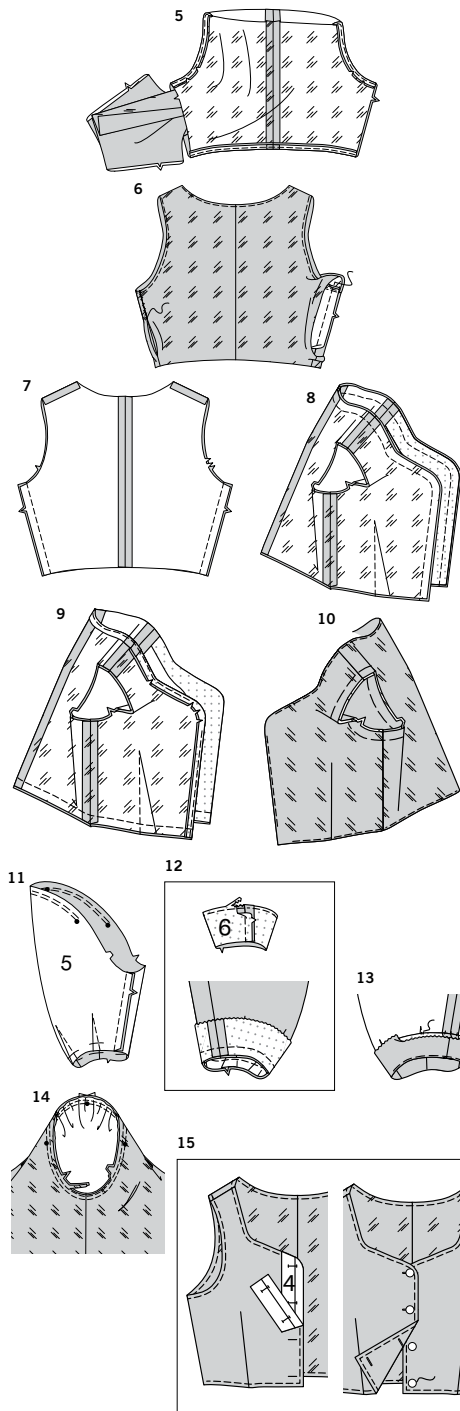
45" (115CM)
WITH NAP
ALL SIZES60" (150CM)
WITH NAP
SIZES 4-6-8-10-12-1460" (150CM)
WITH NAP
SIZES 16 18 20**INTERFACING C,D**

USE PIECES 12 13

20" (51CM)
ALL SIZES**Sewing Directions**Read **General Directions** on page 1 before you begin.Sewing methods in **BOLD TYPE** have Sewing Tutorial Video available.
Scan QR CODE to watch videos:**DART** - see **sewing flat dart** video.**GATHER** - see **sewing two row gathers** video.**EDGE STITCH** - see **how to edgestitch** video.**FINISH** - see **how to finish** video.**INVISIBLE ZIPPER** - see **sewing an invisible zipper** video.**NARROW HEM** - see **sewing narrow hems** video.**STAYSTITCH** - see **how to do stay-stitching** video.**STITCH IN THE DITCH** - see **how to stitch in the ditch** video.**TOPSTITCH** - see **how to topstitch** video.**UNDERSTITCH** - see **how to understitch** video.**SEWING TUTORIALS**Build your skills viewing short, easy-to-follow videos at
[simplicity.com/sewingtutorials](https://www.simplicity.com/sewingtutorials)**PATTERN PIECES WILL BE IDENTIFIED BY NUMBERS THE FIRST TIME THEY ARE USED.****STITCH SEAMS WITH RIGHT SIDES TOGETHER UNLESS OTHERWISE STATED.****TOP A, B****1.** Apply front interfacing (2) to **WRONG** side of front (1) sections, following manufacturer's directions.
STAYSTITCH neck edge along curves.
Make dart and press toward center front.**2.** Stay-stitch neck edge of back (3) sections.
Stitch center back seam of back sections.
Stitch back to front at shoulder seams.**CONTINUE AS FOLLOWS FOR TOP A****3.** Make **DARTS** and stitch seams of lining sections same as for top. With **RIGHT** sides together, pin lining to top, matching centers and seams. Stitch lining to top, leaving side, armhole, and lower back edges open.
Trim seams and corners; clip curves.**4.** **UNDERSTITCH** front and neck edges of lining as far as possible. With **RIGHT** sides together, pin lining to top along remaining raw edges, matching seams; stitch, leaving sides open.

S9791

3 of 4



- 5. UNDERSTITCH** armhole and lower back edges of lining as far as possible.
Turn top **RIGHT** side out by pulling each front through shoulder and out one of the side back openings, as shown; press.

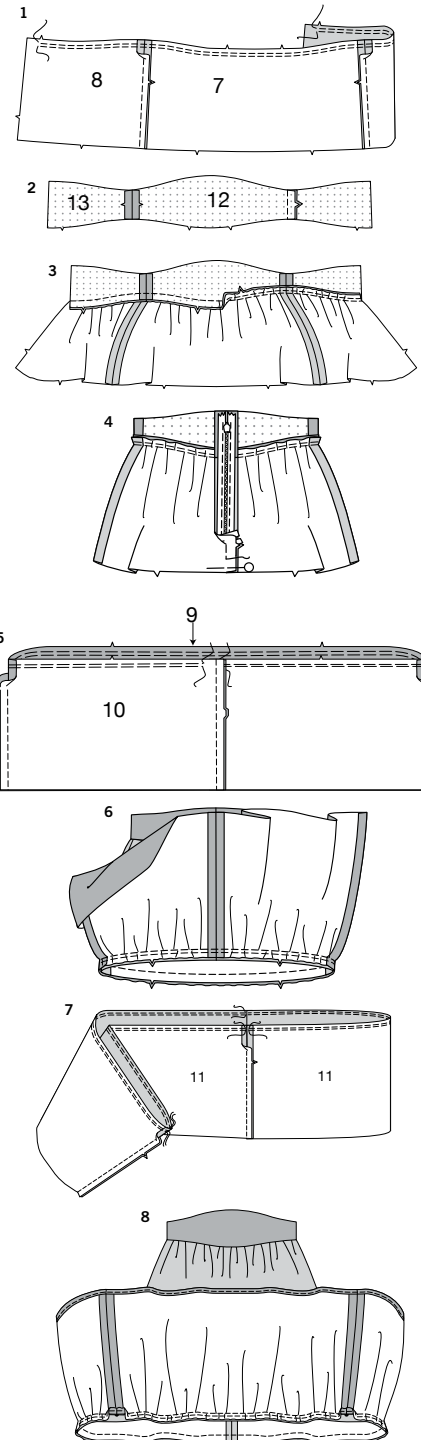
With **RIGHT** sides together and raw edges even, pin top and lining at sides, matching armhole seams and lower seams.
To stitch, begin on lining 1" (2.5cm) above armhole seam; stitch side seam, ending on lining 1" (2.5cm) below lower seam edge. Press seam open.
Turn in seam allowances of remaining lining edges. **SLIP-STITCH** together.

CONTINUE AS FOLLOWS FOR TOP B

- 6.** Stitch back to front at side seams.
- 7.** Make **DARTS** and stitch seams of lining sections same as for top. With **RIGHT** sides together, pin lining to top, matching centers and seams.
Stitch, leaving armhole and lower edges open.
Trim seams and corners; clip curves.
- 8. UNDERSTITCH** front and neck edge of lining as far as possible.
Stitch lower edges together, matching seams.
- 9.** Turn top **RIGHT** side out by pulling through one of the armholes. Press.
UNDERSTITCH lower edge of lining as far as possible.
Baste armhole edges together, matching seams.
- 10. GATHER** upper edge of sleeve (5) sections between outer small dots.
Make **DARTS**. Press all darts toward front armhole; baste darts across raw edges.
Stitch underarm seam of sleeve.
- 11.** Apply interfacing to **WRONG** side of sleeve facing (6), following manufacturer's directions.
Stitch underarm seam.
FINISH unnotched edge.
Pin facing to lower edge of sleeve matching seams; stitch.
Trim seam; clip curves if necessary.
UNDERSTITCH facing.
- 12.** Turn facing to **INSIDE**: press.
To keep the facing from rolling to **OUTSIDE**, hand-tack to underarm seam and then to underside of dart seams about 1/2" (1.3cm) from each point.
- 13.** Turn sleeve **RIGHT** side out. Hold top **WRONG** side out with armhole toward you.
With **RIGHT** sides together, pin sleeve to armhole edges of front and back, matching notches. Stitch.
Stitch again 1/8" (3mm) from first stitching.
Trim seam below notches close to stitching.
Press seam toward sleeve.

CONTINUE AS FOLLOWS FOR TOP A, B

- 14. TOP-STITCH** outer edges of top, excluding sleeve edges for View B.
To mark buttonholes in **RIGHT** front, place guide (4) along finished edge of top, matching centers, as shown. Transfer buttonhole markings to **RIGHT** front. Make buttonholes at markings.
Lap **RIGHT** front over **LEFT**, matching centers front. Sew buttons to **LEFT** front under buttonholes.



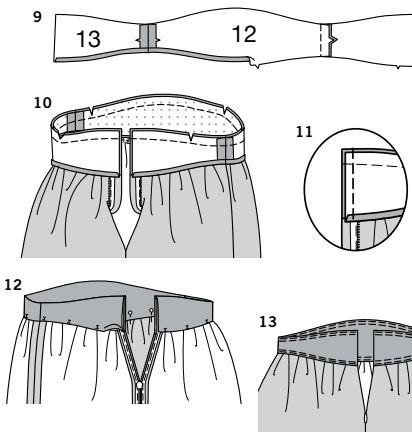
SKIRT C

NOTE: You have cut out two yoke front and four yoke backs. One yoke front and two yoke back sections will be used for the yoke and will be interfaced and stitched to the outside of the skirt. The remaining sections will be used for the yoke facing, and when completed, will be on the inside of the skirt, facing your body.

- 1.** Stitch upper front (7) to upper back (8) sections at side seams. This is your upper skirt.
GATHER upper edge between notches nearest back edges.
- 2.** Apply interfacing to **WRONG** side of yoke front (12) and yoke back (13) sections, following manufacturer's directions.
Stitch yoke backs to front at side seams.
- 3.** Pin upper edge of upper skirt to lower edge of yoke, matching centers, side seams, and notches. Pin up gathering stitches to fit, adjusting fullness evenly; baste. Stitch.
Press seam toward yoke, clipping curves on yoke if necessary.
- 4.** Insert **INVISIBLE ZIPPER** into back opening edges, having tab end 3/4" (2cm) below upper raw edges. Stitch remainder of seam below zipper.
- 5.** Stitch center back seam of middle back (10) sections, matching triple notches.
Stitch middle back to middle front (9) at side seams, matching single notches.
Gather upper edge, breaking stitching at centers back.
- 6.** Pin middle skirt to lower edge of upper skirt, matching centers seams, and notches. Pull up gathering stitches to fit; baste. Stitch.
Press seam toward upper skirt.
- 7.** Stitch lower front and back (11) sections together at sides, forming a circle.
GATHER upper edge, breaking stitches at seams.
- 8.** Make a **NARROW HEM** on lower edge of lower front and back.
Pin lower front and back to lower edge of middle skirt, matching center back seams, placing remaining seams at small dots on front.
Pull up gathering stitches to fit; baste. Stitch.
Press seam toward middle skirt.

S9791

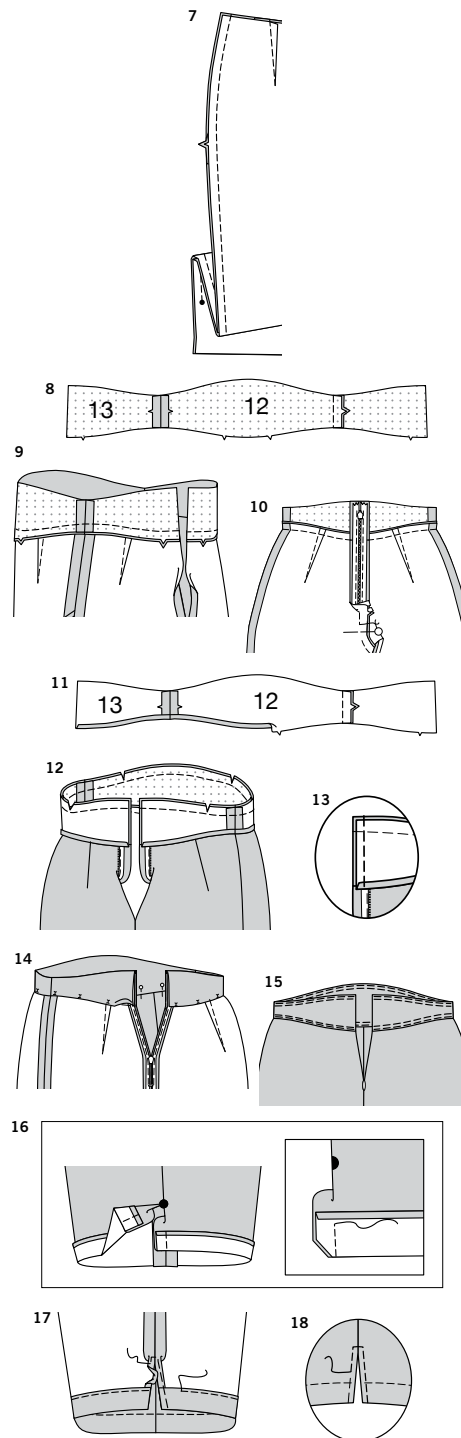
4 of 4



9. Stitch side seams of yoke facing sections. Press under 1/2" (1.3cm) on lower notched edge.
10. Open out center back opening edges of skirt, rolling zipper teeth away from opening edges. With RIGHT sides together and raw edges even, pin facing to yoke, matching centers and side seams. Stitch upper edge. Trim seam; clip curves.
11. Pin back opening edges together. Using an adjustable zipper foot, stitch 1/2" (1.3cm) from back edges, keeping zipper teeth free. Trim corners. Do not trim center back edges. If you prefer, **UNDERSTITCH** facing as far as possible.
12. Turn facing and back edges to INSIDE, rolling zipper teeth back in place; press. Pin pressed edge of facing 1/8" (3mm) over seam, placing pins on OUTSIDE. **STITCH IN THE DITCH.**
13. On OUTSIDE, **EDGE-STITCH** upper and lower edges of yoke, catching in lower edge of facing on INSIDE. **TOP-STITCH** 1/4" (6mm) away from edge-stitching.

PANTS D

1. **STAY-STITCH** upper edge of front (14) sections. Make **DART**; press toward center front.
2. Make a **NARROW HEM** on unnotched angled edge of each pocket (15). Stitch along seam line on inner and lower edge. To ease curved edge of pocket, stitch 1/4" (6mm) INSIDE the seam allowance, using a long machine-stitch.
3. Press under raw edges of pocket along stitching. Pull up ease stitches to shape the curve. To eliminate bulk, notch out the fullness in the seam allowance along the curves as far as the ease stitches.
4. On OUTSIDE, pin pocket to front, matching small and large dots, having raw edges even. Baste raw edges together **EDGE-STITCH** side and lower edges. **TOP-STITCH** 1/4" (6mm) away from edge-stitching.
5. **STAYSTITCH** upper edge of back (16) sections. Make **DART** and press toward center back. Stitch back to front at inner leg seams.
6. Pin center seam, matching inner leg seams, and notches. Stitch center front and center back, stopping 3" (7.5cm) below notch at center back. To reinforce seam, stitch again over first stitching.



7. Pin front to back at sides, matching large dots. Stitch side seam above large dot, back-stitching at large dot to reinforce seam.
8. Apply interfacing to WRONG side of yoke front (12) and yoke back (13) sections, following manufacturer's directions. Stitch yoke backs to front at side seams.
9. Pin upper edge of pants to yoke, matching centers, side seams, and notches. Stitch. Press seam toward yoke.
10. Insert **INVISIBLE ZIPPER** into back opening edges, having tab end 3/4" (2cm) below upper raw edge. Stitch remainder of center back seam.
11. Stitch side seams of yoke facing sections. Press under 1/2" (1.3cm) on lower notched edge.
12. Open out center back opening edges of pants, rolling zipper teeth away from opening edges. With RIGHT sides together and raw edges even, pin yoke facing to yoke, matching centers and side seams. Stitch upper edge. Trim seam; clip curves.
13. Pin back opening edges together. Using an adjustable zipper foot, stitch 1/2" (1.3cm) from back edges, keeping zipper teeth free. Trim corners. Do not trim center back edges. If you prefer, **UNDERSTITCH** facing as far as possible.
14. Turn facing and back edges to INSIDE, rolling zipper teeth back in place; press. Pin pressed edge of facing 1/8" (3mm) over seam, placing pins on OUTSIDE. **STITCH IN THE DITCH.**
15. On OUTSIDE, **EDGE-STITCH** upper and lower edges of yoke, catching in lower edge of facing on INSIDE. **TOP-STITCH** 1/4" (6mm) away from edge-stitching.
16. Turn hem to OUTSIDE at slit opening edges; forming hem facing. Stitch ends in 5/8" (1.5cm) seams. Trim corners.
17. Turn hem facing to INSIDE, turning in hem allowances on slit opening edges; press. Tuck under raw slit edges to meet crease; press. Hand-baste close to inner pressed edge, squaring stitches above opening. Stitch hem close to pressed edge.
18. On OUTSIDE, stitch slit edges as basted; remove basting.



Congrats!

You've completed your sewing adventure

SHARE YOUR LOOK



Post your pattern and tag us
@simplicity_creative_group and **#simplicitypatterns**
for a chance to be featured on our social media.

Look for more PDF patterns at **simplicity.com**

Have a question or need help with your sewing project call us at
1-888-588-2700



Simplicity ©2023 a division of IG Design Group Americas Inc. • Atlanta, GA 30342 USA www.thedesigngroup.com • All Rights Reserved. www.simplicity.com • Made in the U.S.A. Fabriqué aux États-Unis.

To be used for individual private home use only and not for commercial or manufacturing purposes. • A usage privé seulement et non à des fins commerciales ou de production en série. • Para uso privado solamente, no se puede utilizar con propósitos de comercialización o de producción en serie.