



Average

MISSES' KNIT TOPS, PANTS AND SKIRT

Suggested Fabrics: Stretch Knits only such as ITY, Jersey, Spandex Blends, Stretch Velvet. See Pick-A-Knit® Rule.

Notions: **A,B:** One pkg. of ½" (1.3cm) single fold bias tape, one 16" (41cm) invisible zipper (adjust to fit). **C,D:** 1½ yds. (1.1m) of ¼" (6mm) elastic.

Sizes	4	6	8	10	12	14	16	18	20
European	30	32	34	36	38	40	42	44	46

BODY MEASUREMENTS: Select pattern size based on body measurements

Bust	29½	30½	31½	32½	34	36	38	40	42	Ins.
Waist	22	23	24	25	26½	28	30	32	34	"
Hip-9" below waist	31½	32½	33½	34½	36	38	40	42	44	"
Back-neck to waist	15¼	15½	15¾	16	16¼	16½	16¾	17	17¼	"

Top A,B	60**	1%	1¼	1¾	1¾	1¾	1¾	1¾	2	2	Yds.
Pants C	60**	1½	2½	2½	2½	2½	2½	2½	2½	2½	Yds.
Skirt D	60** - 1½ yds.										

FINISHED GARMENT MEASUREMENTS (Includes Design and Wearing Ease)

A,B Bust	29½	30½	31½	32½	34	36	38	40	42	Ins.
A,B Waist	24	25	26	27	28½	30½	32½	34½	36½	"
C,D Waist	21½	22½	23½	24	26	28	30	32	34	"
C Hip	32	33	34	35	36½	38½	40½	42½	44½	"
D Hip	31	32	33	34	35½	37½	39½	41½	43½	"
Width, lower edge										
Skirt D	32½	33½	34½	35½	37	39	41	43	45	Ins.
Width, each leg										
Pants C	26¾	27½	28¾	29	30	31¼	32½	33¾	35	Ins.
Finished back length from waist										
Skirt D	25	25	25	25	25	25	25	25	25	Ins.
Finished side length from waist										
Pants C	41¼	41½	41¾	42	42¼	42½	42¾	43	43¼	Ins.

*with nap **without nap

Moins Facile

HAUTS EN TRICOT, PANTALON ET JUPE POUR JEUNES FEMMES

Tissus Conseillés: Seulement pour tricotés extensibles tels que Tricot ITY, Jersey, Mélanges de spandex, Velours extensible. Voyez la Règle-Pour-Choisir-Un-Tricot®.

Merçerie: **A,B:** 1 paquet de ruban de biais simple de 1.3cm, 1 fermeture à glissière invisible de 41cm (adaptez pour ajuster). **C,D:** 1.1m d'élastique de 6mm.

Tailles	4	6	8	10	12	14	16	18	20
Françaises	32	34	36	38	40	42	44	46	48
Européen	30	32	34	36	38	40	42	44	46

MESURES DU CORPS: Choisissez la taille du patron basée sur les mesures du corps

Poitrine	75	78	80	83	87	92	97	102	107	cm
Taille	56	58	61	64	67	71	76	81	87	"
Hanches (23cm au-dessous de la taille)										

	80	83	85	88	92	97	102	107	112	cm
Dos du cou à la taille	38.5	39.5	40	40.5	41.5	42	42.5	43	44	"

Haut A,B	150cm*	1.5	1.6	1.6	1.6	1.6	1.8	1.8	1.8	1.9	m
Pantalon C	150cm*	1.4	2.0	2.0	2.0	2.0	2.0	2.2	2.2	2.2	m

Jupe D 150cm* - 1.1m

MESURES DES VÊTEMENTS FINI (Motif et aisance de port compris)

A,B Poitrine	75	77	80	83	86	91	97	102	107	cm
A,B Taille	61	64	66	69	72	77	83	88	93	"
C,D Taille	55	57	60	62	66	71	76	81	86	"
C Hanches	81	84	86	89	93	98	103	108	113	"
D Hanches	79	81	84	86	90	95	100	105	110	"

Largeur à l'ourlet

Jupe D	83	85	88	90	94	99	104	109	114	cm
--------	----	----	----	----	----	----	-----	-----	-----	----

Largeur, chaque jambe

Pantalon C	68	70	72	74	76	79	83	86	89	cm
------------	----	----	----	----	----	----	----	----	----	----

Longueur finie – dos, taille à l'ourlet

Jupe D	64	64	64	64	64	64	64	64	64	cm
--------	----	----	----	----	----	----	----	----	----	----

Longueur finie – côté, taille à l'ourlet

Pantalon C	105	105	106	107	107	108	109	109	110	cm
------------	-----	-----	-----	-----	-----	-----	-----	-----	-----	----

*avec sens **sans sens



A



B



C



D

Use the 1 inch (2.54cm) box to ensure you are using rule at 100%

Utilisez la boîte de 2.54 cm pour vous assurer d'utiliser la règle à 100%.

Utilizar un cuadrado de 2.54 cm para asegurarse de estar usando la regla al 100%.

PICK-A-KNIT® RULE

FOR THIS PATTERN - 4" (10 cm) OF KNIT FABRIC MUST STRETCH CROSSWISE FROM HERE
POUR CE PATRON - LE JERSEY DOIT S'ÉTIRER DANS LA LARGEUR DE 4" (10 cm) DEPUIS ICI
PARA ESTE PATRON - LAS MALLAS DEBEN ESTIRARSE A LO ANCHO POR 4" (10 cm) DESDE AQUÍ



TO HERE 50%
JUSQUE LA 50%
HASTA ALLA 50%



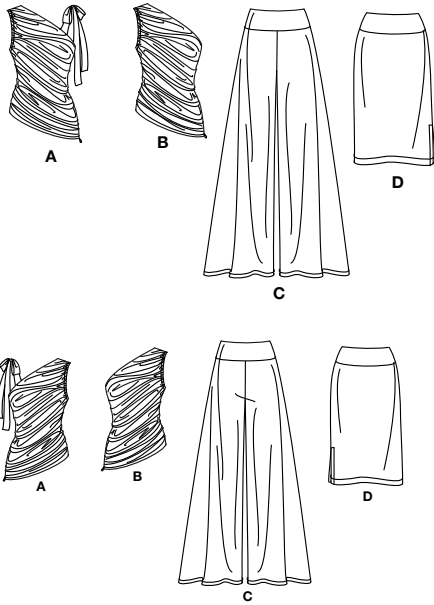
When using the Pick-A-Knit® rule to measure your fabrics stretch capacity, rule must be viewed or printed at 100%.

Quand vous utilisez la règle Pick-A-Knit® pour mesurer la capacité d'élasticité des tissus, la règle doit être visible ou imprimée à 100%.

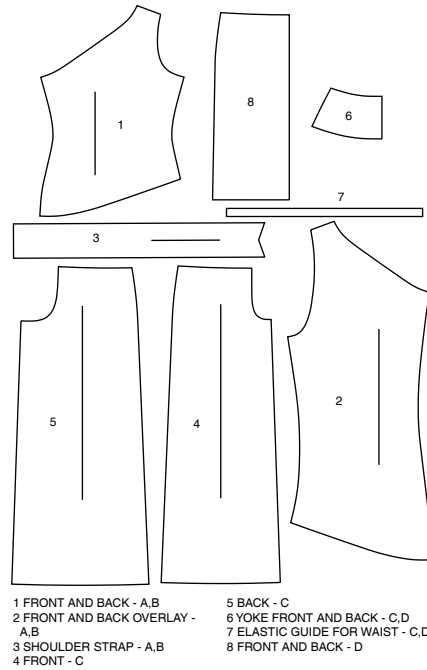
Al utilizar la regla Pick-A-Knit® para medir la capacidad de elasticidad de las telas, la regla debe estar visible o impresa al 100%.

Simplicity®

Thank you for purchasing this Simplicity pattern.
We made every effort to provide you with a high quality product.



8 PIECES



www.simplicity.com



info@simplicity.com



1-888-588-2700

General Directions

The Pattern

SYMBOLS

- GRAIN LINE Place on straight grain of fabric parallel to selvage
- PLACE SOLID LINE on fold of fabric.
- CENTER FRONT OR BACK of garment.
- NOTCHES
- DOTS
- CUTTING LINE
- LENGTHEN OR SHORTEN LINES

SEAM ALLOWANCE: 5/8" (1.5cm) unless otherwise stated is included but not printed on MULTI-SIZE PATTERNS. Mark your size with colored felt tip pen. See chart on tissue for how to use MULTI-SIZE PATTERNS.

ADJUST IF NEEDED

Make adjustments before placing pattern on fabric.

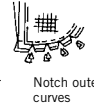
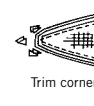
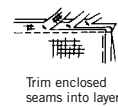
TO LENGTHEN:
Cut pattern between lengthen or shorten lines. Spread pattern evenly, the amount needed and tape to paper.

TO SHORTEN:
At lengthen or shorten lines, make an even pleat taking up amount needed. Tape in place.

When lengthen or shorten lines are not given, make adjustments at lower edge of pattern.

Sewing

- SEW garment following **Sewing Directions**.
- PIN or machine-baste seams matching notches.
- STITCH 5/8" (1.5 cm) seams unless otherwise stated.
- PRESS seams open unless otherwise indicated clipping when necessary so seams will lie flat.
- TRIM seams to reduce bulk, as shown below.



Cutting/Marking

BEFORE CUTTING:

PRESS pattern pieces with a warm dry iron. PRE-SHRINK fabric by pre-washing washables or steam-pressing non-washables.

CIRCLE your cutting layout.

PIN pattern to fabric as shown in Cutting Layouts.

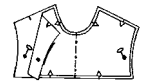
- FOR DOUBLE THICKNESS: Fold fabric with RIGHT sides together.
- FOR SINGLE THICKNESS: Place fabric RIGHT side up.
- FOR PILE, SHADED OR ONE WAY DESIGN FABRICS: Use "with nap" layouts

AFTER CUTTING:

Transfer markings to WRONG side of fabric before removing pattern. Use pin and chalk method or dressmaker's tracing paper and wheel.

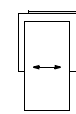
To Quick Mark:

- Snip edge of fabric to mark notches, ends of fold lines and center lines.
- Pin mark dots.



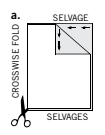
SPECIAL CUTTING NOTES

★ If layout shows a piece extending past fold, cut out all pieces except piece that extends.

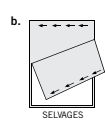


Open out fabric to single thickness. Cut extending piece on RIGHT side of fabric in position shown.

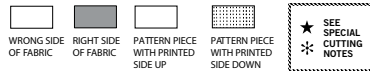
✱ Mark small arrows along both selvages indicating direction of nap or design. Fold fabric crosswise with RIGHT sides together, and cut along fold (a).



Turn one fabric layer around so arrows on both layers go in the same direction. Place RIGHT sides together (b).



Cutting Layouts



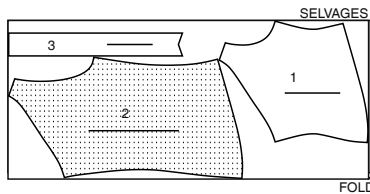
POSITION OF PATTERN PIECES MAY VARY SLIGHTLY ACCORDING TO YOUR PATTERN SIZE

ALL VIEWS SIZED FOR STRETCH KNITS ONLY

TOP A

USE PIECES 1 2 3

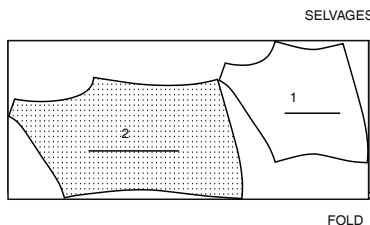
60" (150CM)
WITH NAP
ALL SIZES



TOP B

USE PIECES 1 2

60" (150CM)
WITH NAP
ALL SIZES

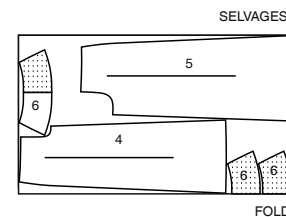


PANTS C

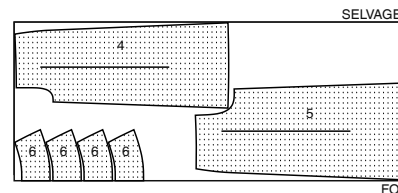
USE PIECES 4 5 6

PIECE 7 IS CUT OF ELASTIC

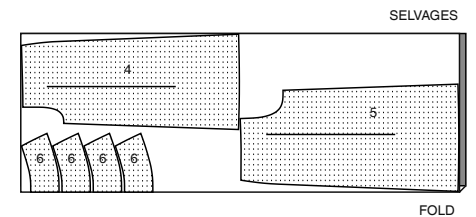
60" (150CM)
WITH NAP
SIZE 4



60" (150CM)
WITH NAP
SIZES 6 8 10 12 14



60" (150CM)
WITH NAP
SIZES 16 18 20

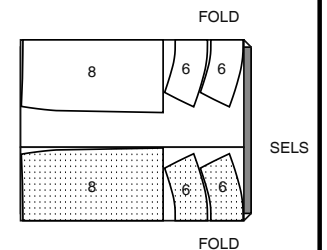


SKIRT D

USE PIECES 6 8

PIECE 7 IS CUT OF ELASTIC

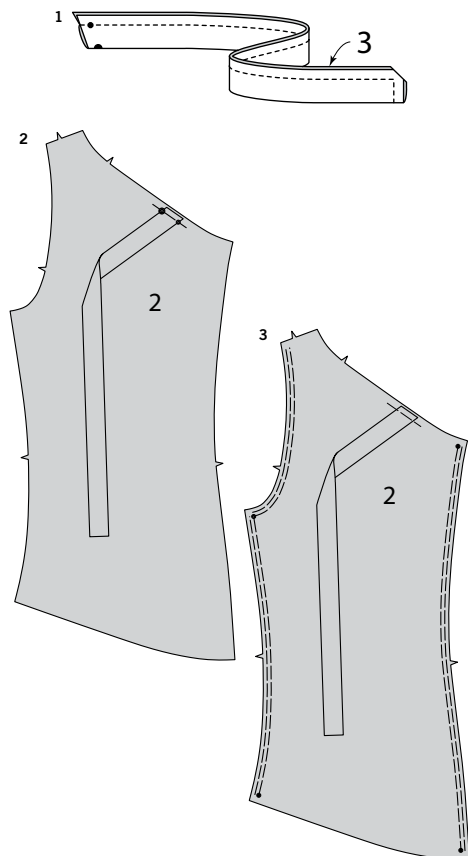
60" (150CM)
WITH NAP
ALL SIZES



SEWING TUTORIALS



Build your skills viewing short, easy-to-follow videos at [simplicity.com/sewingtutorials](https://www.simplicity.com/sewingtutorials)



Sewing Directions

FABRIC KEY RIGHT SIDE WRONG SIDE INTERFACING LINING LINING

Read **General Directions** on page 1 before you begin.

Sewing methods in **BOLD TYPE** have Sewing Tutorial Video available. Scan QR CODE to watch videos:

INVISIBLE ZIPPER – see **Zippers**: “sewing an invisible zipper” video.

NARROW HEM – see **Hems**: “sewing narrow hems” video.

TOPSTITCH – see **Machine Stitches**: “how to topstitch” video.

UNDERSTITCH – see **Machine Stitches**: “how to understitch” video.

PATTERN PIECES WILL BE IDENTIFIED BY NUMBERS THE FIRST TIME THEY ARE USED.

STITCH 5/8" (1.5CM) SEAMS WITH RIGHT SIDES TOGETHER UNLESS OTHERWISE STATED.

TOP A, B

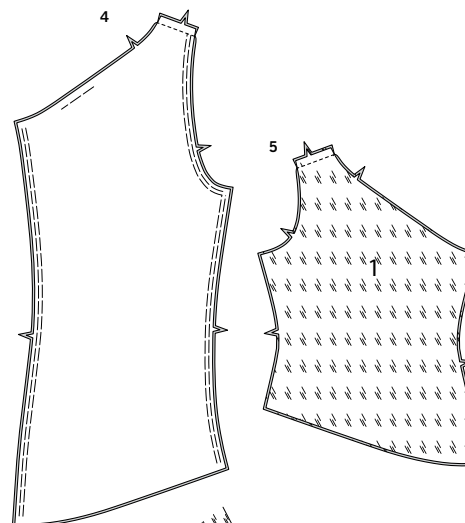
NOTE: For clarity, illustrations of front and back (1) will be shown as lining.

1. FOR VIEW A – Fold each shoulder strap (3) in half lengthwise with **RIGHT** sides together. Stitch, leaving end with small and large dots open. Trim seam; clip corner.

2. Turn straps. On **OUTSIDE**, pin one strap to each front and back overlay (2), matching small and large dots. Baste.

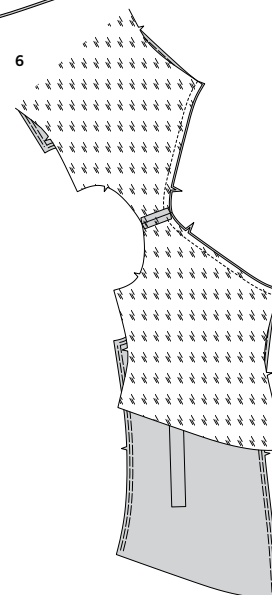
CONTINUE AS FOLLOWS FRO BOTH VIEWS

3. To gather armhole and side edges between the small dots of front and back overlay (2), stitch 1/2" (1.3cm) from raw edge and again 1/4" (6mm) from raw edge, using a long machine stitch.



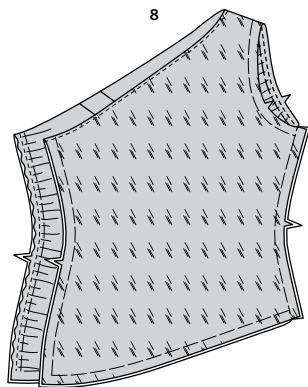
4. Stitch shoulder edges of overlay.

5. Stitch front and back (1) shoulder edges together.

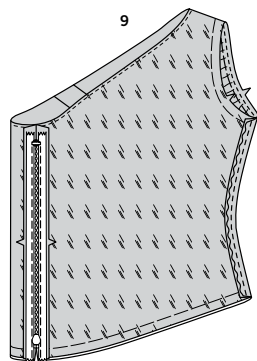


6. With **RIGHT** sides together, pin overlay to top at neck edge, matching centers, seams, and notches. Stitch.
UNDERSTITCH the top- see **how to understitch** video.

7. Turn top to **INSIDE**; press. On **OUTSIDE**, pull up gathering stitches on side and armhole edges of overlay between the small dots to fit the top. Baste raw edges of overlay to top along all remaining seamlines.

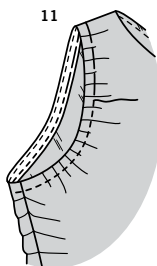
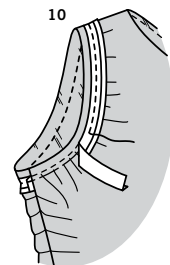


8. Stitch RIGHT side seam of top.



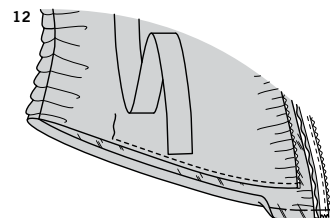
NOTE: Zipper opens from the lower edge, up.

9. Insert **INVISIBLE ZIPPER** (dirty finish) with top stop 3/4" (2cm) from lower edge and bottom stop at the large dot. Stitch remainder of seam and shorten zipper- see **Zippers sewing an invisible zipper** video.



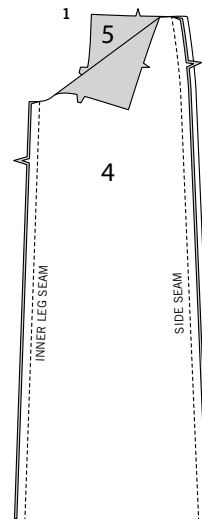
10. Open out one edge of single fold bias tape. With RIGHT sides together, pin tape to armhole edge having crease 5/8" (1.5cm) from raw edge, turning under and lapping one end at side seam. Stitch. Trim seam.

11. **UNDERSTITCH** the tape- see **how to understitch** video. Turn tape to INSIDE; press. Baste close to inner edge of tape. On OUTSIDE, **TOPSTITCH** edge as basted- see **how to topstitch** video.

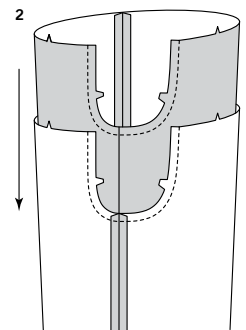


12. Press up hem and upper edge of zipper tape along basting. **TOPSTITCH** edge. Remove basting.

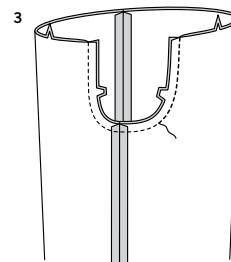
PANTS C



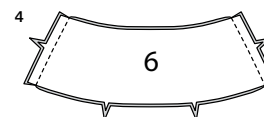
1. Stitch front (4) to back (5) at inner leg and side seams.



2. With RIGHT sides together, insert one leg INSIDE the other.

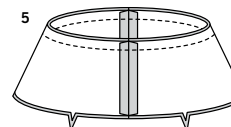


3. With RIGHT sides together, pin center seam, matching inner leg seams and notches. Stitch. To reinforce seam, stitch again over first stitching.

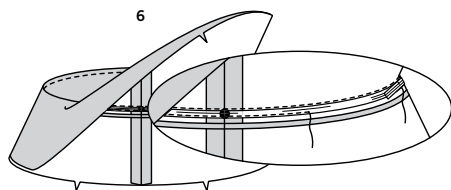


NOTE: You have cut four yoke front and back sections. Two will be the yoke front and back and two will be used as facings.

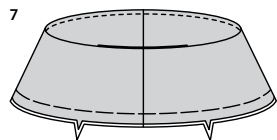
4. Pin yoke front and back (6) sections together at side edges. Stitch. Stitch yoke front and back facing sections together in the same manner.



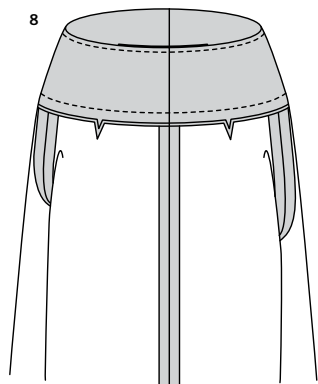
5. With RIGHT sides together and raw edges even, pin yoke to yoke facing at upper edge, matching seams. Stitch.



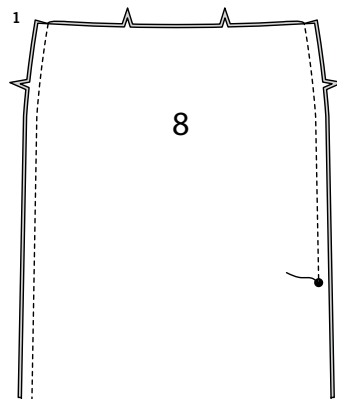
- 6.** Open out the yoke; press seam toward facing. Cut a piece of elastic the length of the elastic guide for waist (7). Stitch ends. On **INSIDE**, pin elastic to facing over seam allowance with upper edge along seam line, matching centers, and placing side seams at small dots. Stitch close to lower edge of elastic, stretching elastic to fit.



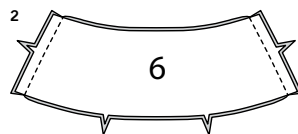
- 7.** Turn yoke; press. Baste raw edges together.



- 8.** Pin pants to yoke, matching centers, seams, and notches. Stitch. Press seam toward pants.
NARROW HEM pant legs- see [how to sew a narrow hem](#) video.

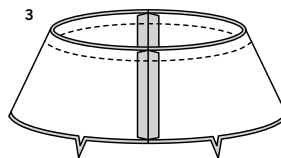


- 1.** Pin front and back (8) sections together at side edges. Stitch **RIGHT** side seam. Stitch left side seam from upper edge to large dot, back-stitching at dot to reinforce the seam.

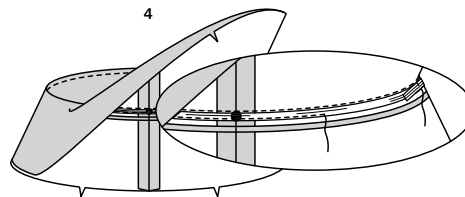


- 2.** Pin yoke front and back (6) sections together at side edges. Stitch. Stitch yoke front and back facing sections together in the same manner.

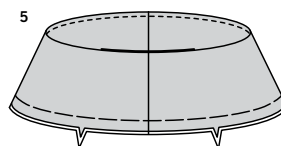
NOTE: You have cut four yoke front and back sections. Two will be the yoke front and back and two will be used as facings.



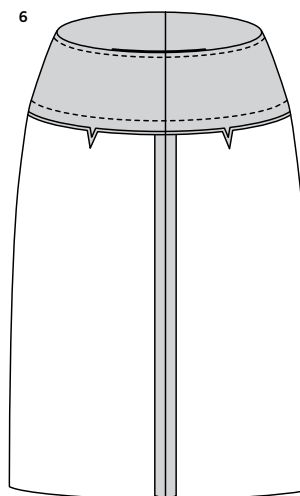
- 3.** With **RIGHT** sides together and raw edges even, pin yoke to yoke facing at upper edge, matching seams. Stitch.



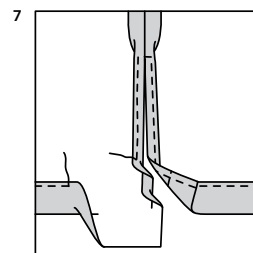
- 4.** Open out the yoke; press seam toward facing. Cut a piece of elastic the length of the elastic guide for waist (7). Stitch ends. On **INSIDE**, pin elastic to facing over seam allowance with upper edge along seam line, matching centers, and placing side seams at small dots. Stitch close to lower edge of elastic, stretching elastic to fit.



- 5.** Turn yoke; press. Baste raw edges together.



- 6.** Pin skirt to yoke, matching centers, seams, and notches. Stitch. Press seam toward skirt.



- 7.** Press up hem allowance on skirt. Stitch 1" (2.5cm) from pressed edge. **NARROW HEM** LEFT side opening edges, squaring stitching at opening end- see [how to sew a narrow hem](#) video.



Congrats!

You've completed your sewing adventure

SHARE YOUR LOOK



Post your pattern and tag us
@simplicity_creative_group and **#simplicitypatterns**
for a chance to be featured on our social media.

Look for more PDF patterns at **simplicity.com**

Have a question or need help with your sewing project call us at
1-888-588-2700



Simplicity ©2023 a division of IG Design Group Americas Inc. • Atlanta, GA 30342 USA www.thedesigngroup.com • All Rights Reserved. www.simplicity.com • Made in the U.S.A. Fabriqué aux États-Unis.

To be used for individual private home use only and not for commercial or manufacturing purposes. • A usage privé seulement et non à des fins commerciales ou de production en série. • Para uso privado solamente, no se puede utilizar con propósitos de comercialización o de producción en serie.