

easy-to-sew



A



B



C



MISSES' KNIT SKIRTS IN TWO LENGTHS

Suggested Fabrics: Stretch Knits only such as Bamboo, Interlock, ITY, Jacquard, Jersey, Rib Knit. See Pick-A-Knit® Rule.

Notions: A,B,C: 7" (18cm) invisible zipper. **Also for A,B:** One pkg. of 1" (2.5cm) double fold bias tape. **Also for C:** One pkg. of ½" (1.3cm) single fold bias tape.

Sizes	10	12	14	16	18	20	22
European	36	38	40	42	44	46	48

BODY MEASUREMENTS: Select pattern size based on body measurements

Bust	32½	34	36	38	40	42	44	Ins.
Waist	25	26½	28	30	32	34	37	"
Hip-9" below waist	34½	36	38	40	42	44	46	"
Back-neck to waist	16	16¼	16½	16¾	17	17¼	17½	"

Interfacing A,B,C - 20", ¼ yd.

Skirt A - worn 1" below waist -

60**	1	1	1	1	1	1	1	Yd.
------	---	---	---	---	---	---	---	-----

Skirt B,C - worn 1" below waist -

60**	1¼	1¼	1¼	1¼	1¼	1¼	1¼	Yds.
------	----	----	----	----	----	----	----	------

FINISHED GARMENT MEASUREMENTS (Includes Design and Wearing Ease)

A,B,C Hip	34½	36	38	40	42	45	48	Ins.
Width, lower edge								
Skirt A,B,C	34½	36	38	40	42	45	48	Ins.
Finished back length from waist								
Skirt A	25	25	25	25	25	25	25	Ins.
Skirt B,C	33	33	33	33	33	33	33	"

*with nap **without nap

Very Easy

JUPES EN TRICOT EN DEUX LONGUEURS POUR JEUNES FEMMES

Tissus Conseillés: Seulement pour tricotés extensibles tels que Tricot de bambou, Tricotés interlock en fil retors, Tricot ITY, Jacquard, Jersey, Tricot à côtes. Voyez la Règle-Pour-Choisir-Un-Tricot®.

Mercurie: A,B,C: Fermeture à glissière invisible de 18cm. **Aussi pour A,B:** 1 paquet de ruban de biais double de 2.5cm. **Aussi pour C:** 1 paquet de ruban de biais simple de 1.3cm.

Tailles	10	12	14	16	18	20	22
Françaises	38	40	42	44	46	48	50
Européen	36	38	40	42	44	46	48

MESURES DU CORPS: Choisissez la taille du patron basée sur les mesures du corps

Poitrine	83	87	92	97	102	107	112	cm
Taille	64	67	71	76	81	89	94	"
Hanches ((23cm au-dessous de la taille)								
	88	92	97	102	107	112	117	cm
Dos du cou à la taille	40.5	41.5	42	42.5	43	44	44	"

Entoilage A,B,C - 51cm, 0.3m

Jupe A - se porte à 2.5cm au-dessous de la taille

150cm*	1.0	1.0	1.0	1.0	1.0	1.0	1.0	m
--------	-----	-----	-----	-----	-----	-----	-----	---

Jupe B,C - se porte à 2.5cm au-dessous de la taille

150cm*	1.2	1.2	1.2	1.2	1.2	1.2	1.2	m
--------	-----	-----	-----	-----	-----	-----	-----	---

MESURES DES VÊTEMENTS FINI (Motif et aisance de port compris)

A,B,C Hanches	88	91	97	102	107	114	122	cm
Largeur à l'ourlet								
Jupe A,B,C	88	91	97	102	107	114	122	cm
Longueur finie - dos, taille à l'ourlet								
Jupe A	64	64	64	64	64	64	64	cm
Jupe B,C	84	84	84	84	84	84	84	"

*avec sens **sans sens



A



B,C

Use the 1 inch (2.54cm) box to ensure you are using rule at 100%

Utilisez la boîte de 2.54 cm pour vous assurer d'utiliser la règle à 100%.

Utilizar un cuadrado de 2.54 cm para asegurarse de estar usando la regla al 100%.

PICK-A-KNIT® RULE

FOR THIS PATTERN - 4" (10 cm) OF KNIT FABRIC MUST STRETCH CROSSWISE FROM HERE
POUR CE PATRON - LE JERSEY DOIT S'ÉTIRER DANS LA LARGEUR DE 4" (10 cm) DEPUIS ICI
PARA ESTE PATRON - LAS MALLAS DEBEN ESTIRARSE A LO ANCHO POR 4" (10 cm) DESDE AQUI



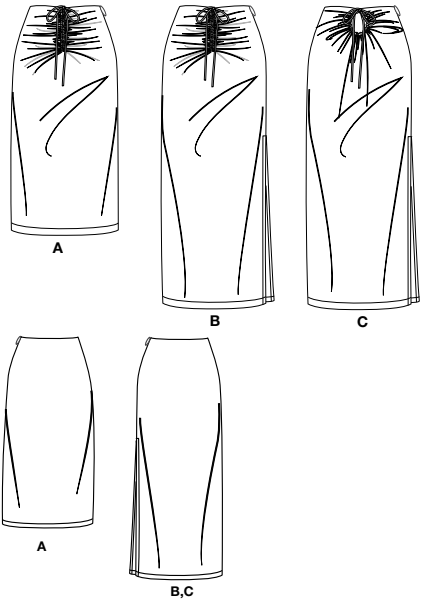
TO HERE 50%
JUSQUE LA 50%
HASTA ALLA 50%



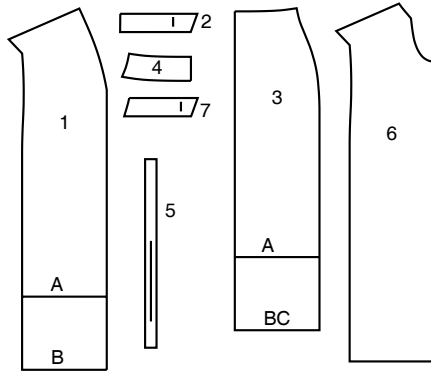
When using the Pick-A-Knit® rule to measure your fabrics stretch capacity, rule must be viewed or printed at 100%.
Quand vous utilisez la règle Pick-A-Knit® pour mesurer la capacité d'élasticité des tissus, la règle doit être visible ou imprimée à 100%.
Al utilizar la regla Pick-A-Knit® para medir la capacidad de elasticidad de las telas, la regla debe estar visible o impresa al 100%.

Simplicity®

Thank you for purchasing this Simplicity pattern. We made every effort to provide you with a high quality product.



7 PIECES



- 1 FRONT-A,B
- 2 FRONT INTERFACING-A,B
- 3 BACK-A,B,C
- 4 BACK FACING-A,B,C
- 5 DRAWSTRING-A,B,C
- 6 FRONT-C
- 7 FRONT INTERFACING-C

General Directions

The Pattern

- SYMBOLS**
- ↔ GRAIN LINE: Place on straight grain of fabric parallel to selvage
 - ⇄ PLACE SOLID LINE on fold of fabric.
 - - - CENTER FRONT OR BACK of garment.
 - ∇ NOTCHES
 - ○ DOTS
 - CUTTING LINE
 - == LENGTHEN OR SHORTEN LINES

SEAM ALLOWANCE: 5/8" (1.5cm) unless otherwise stated is included but not printed on MULTI-SIZE PATTERNS. Mark your size with colored felt tip pen. See chart on tissue for how to use MULTI-SIZE PATTERNS.

ADJUST IF NEEDED

Make adjustments before placing pattern on fabric.

TO LENGTHEN:
Cut pattern between lengthen or shorten lines. Spread pattern evenly, the amount needed and tape to paper.

TO SHORTEN:
At lengthen or shorten lines, make an even pleat taking up amount needed. Tape in place.

When lengthen or shorten lines are not given, make adjustments at lower edge of pattern.

Cutting/Marking

BEFORE CUTTING:

PRESS pattern pieces with a warm dry iron. PRE-SHRINK fabric by pre-washing washables or steam-pressing non-washables.

CIRCLE your cutting layout.

PIN pattern to fabric as shown in Cutting Layouts.

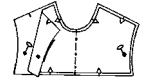
- FOR DOUBLE THICKNESS: Fold fabric with RIGHT sides together.
- FOR SINGLE THICKNESS: Place fabric RIGHT side up.
- FOR PILE, SHADED OR ONE WAY DESIGN FABRICS: Use "with nap" layouts

AFTER CUTTING:

Transfer markings to WRONG side of fabric before removing pattern. Use pin and chalk method or dressmaker's tracing paper and wheel.

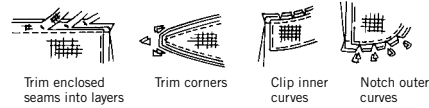
To Quick Mark:

- Snip edge of fabric to mark notches, ends of fold lines and center lines.
- Pin mark dots.



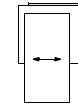
Sewing

- SEW garment following **Sewing Directions**.
- PIN or machine-baste seams matching notches.
- STITCH 5/8" (1.5 cm) seams unless otherwise stated.
- PRESS seams open unless otherwise indicated clipping when necessary so seams will lie flat.
- TRIM seams to reduce bulk, as shown below.

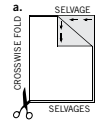


SPECIAL CUTTING NOTES

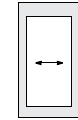
★ If layout shows a piece extending past fold, cut out all pieces except piece that extends.



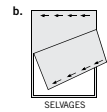
✱ Mark small arrows along both selvages indicating direction of nap or design. Fold fabric crosswise with RIGHT sides together, and cut along fold (a).



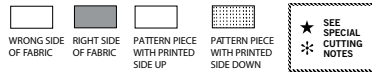
Open out fabric to single thickness. Cut extending piece on RIGHT side of fabric in position shown.



Turn one fabric layer around so arrows on both layers go in the same direction. Place RIGHT sides together (b).



Cutting Layouts

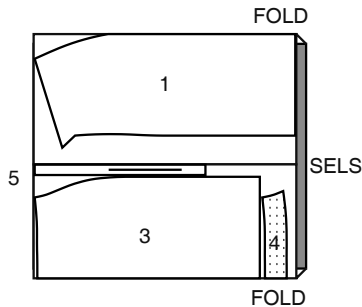


POSITION OF PATTERN PIECES MAY VARY SLIGHTLY ACCORDING TO YOUR PATTERN SIZE

SKIRT A

USE PIECES 1 3 4 5

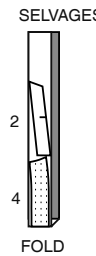
60" (150CM) WITH NAP ALL SIZES



INTERFACING A,B

USE PIECES 2 4

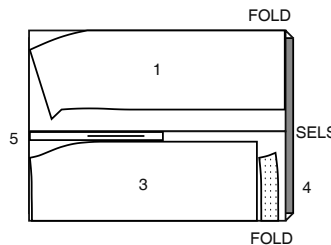
60" (150CM) WITH NAP ALL SIZES



SKIRT B

USE PIECES 1 3 4 5

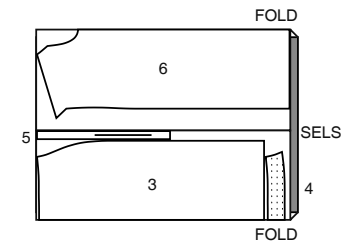
60" (150CM) WITH NAP ALL SIZES



SKIRT C

USE PIECES 3 4 5 6

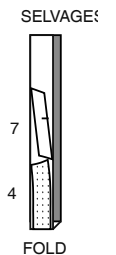
60" (150CM) WITH NAP ALL SIZES



INTERFACING C

USE PIECES 4 7

60" (150CM) WITH NAP ALL SIZES



SEWING TUTORIALS



Build your skills viewing short, easy-to-follow videos at [simplicity.com/sewingtutorials](https://www.simplicity.com/sewingtutorials)

Sewing Directions

FABRIC KEY

Read **General Directions** on page 1 before you begin.

Sewing methods in **BOLD TYPE** have Sewing Tutorial Video available. Scan QR CODE to watch videos:

UNDERSTITCH - see how to understitch video

SIMPLY THE BEST SEWING TECHNIQUES...

FOR KNITS

- Use a ball point or stretch needle.
- Decrease pressure on presser foot for heavy sweater knits; increase pressure for lingerie knits.
- Stretch knits need seams that are supple enough to “give” with the fabric. You can sew them with straight stitches (stretching the fabric slightly as you sew), narrow zig-zag stitches or one of the stretch stitches built into many conventional machines, or on your serger.
- Some knits require very little or no pressing while sewing. Use the appropriate temperature setting. Press lightly or use steam.
- Hems can be stitched in place 1/4” (6mm) from raw edge.
- Raw edges of hem and facings are left raw, unless using a serger.

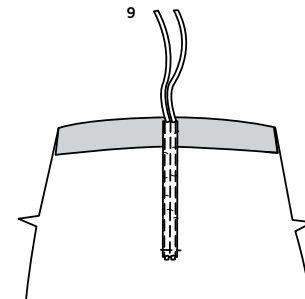
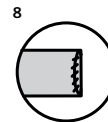
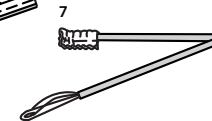
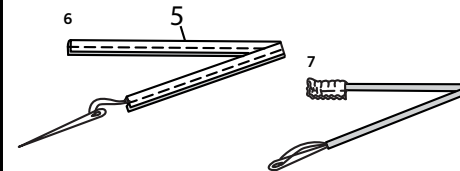
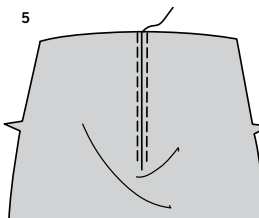
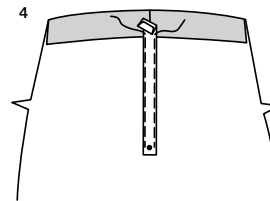
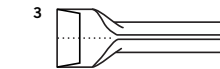
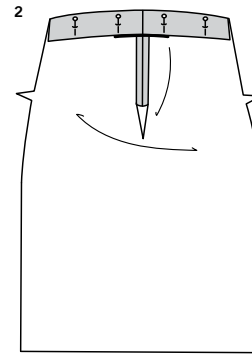
PATTERN PIECES WILL BE IDENTIFIED BY NUMBERS THE FIRST TIME THEY ARE USED.

STITCH SEAMS WITH RIGHT SIDES TOGETHER UNLESS OTHERWISE STATED.

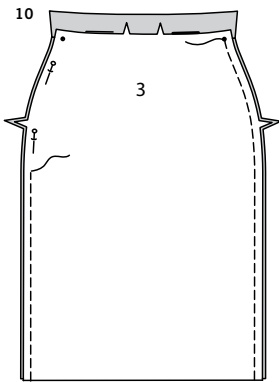
SKIRT A, B

NOTE: Skirt is worn 1” (2.5cm) below waist.

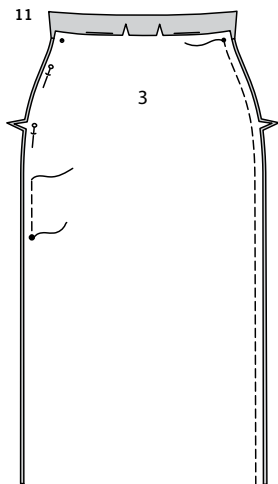
1. Apply interfacing (2) to front (1) sections along foldline, having raw edges even. Pin inner raw edges of front sections together, matching double notches. Stitch 3/8” (1cm) along seam and stitching lines to small dot. Press seam open as far as possible.



2. Turn upper edge of front to **INSIDE** along foldline, forming self-facing; pin facing in place with a few pins.
3. Cut a piece of 1/2” (1.3cm) double fold bias tape the length of skirt along center front from foldline to small dot, plus 3/4” (2cm). Open out tape at center and press out center crease; press under 3/8” (1cm) on one end.
4. On **INSIDE**, center and pin tape over center front seam, having upper pressed edge 1/8” (3mm) below fold edge and raw edge extending 1/2” (1.5cm) beyond small dot. Stitch close to long edges of tape to level of small dot, forming casing. **TIP** - Double fold bias tape comes with one side slightly wider than the other. After pressing out center crease, use a clear ruler and a washable fabric marking pen or pencil to mark center of tape for placement.
5. On **OUTSIDE**, stitch in the ditch or “groove” of center front seam to level of casing stitches, forming two tunnels for drawstring. **TIP** - To conceal the stitches in the ditch or groove of seam, try using a zipper foot, spreading each side of front away from seam.
6. Fold each drawstring (5) section in half, lengthwise, with **RIGHT** sides together. Stitch a scant 1/4” (6mm) from fold edge, stretching drawstring while stitching. With a needle, attach a strong thread to one end of loop.
7. Draw needle eye forward through fold, turning drawstring **RIGHT** side out.
8. Tuck in raw edge on one end of each drawstring. Invisibly slip-stitch opening closed.
9. On **INSIDE**, insert raw edge of drawstrings through tunnels in casing, having raw edges even. Stitch across lower edge of tape between ends of outer casing stitching, catching in ends of drawstring.

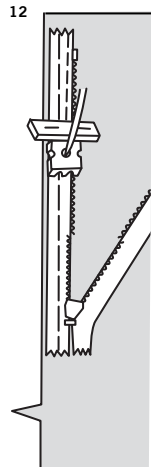


- 10. FOR VIEW A-** Pin back (3) to front at side seams, matching notches and small dots. Stitch RIGHT side seam below small dot, back-stitching at small dot to reinforce seam. Stitch LEFT side seam to within 3" (7.5cm) of notch, back-stitching at end of opening.

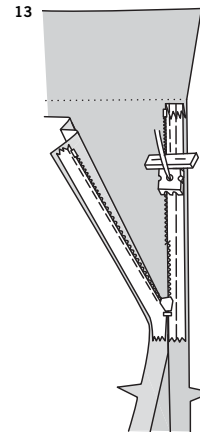


- 11. FOR VIEW B-** Pin back (3) to front at side seams, matching notches, small and large dots. Stitch RIGHT side seam below small dot, back-stitching at small dot to reinforce seam. Stitch LEFT side seam from large dot to within 3" (7.5cm) of notch, back-stitching at each end to reinforce seam.

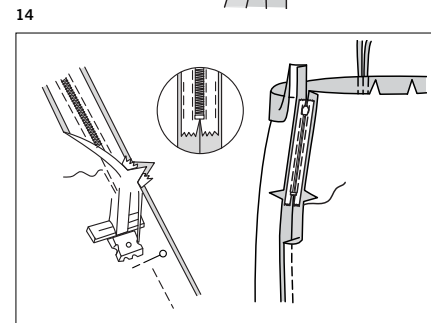
NOTE: *Stitch invisible zipper using an invisible zipper foot. Before you begin, be sure to line up your needle with center of invisible zipper foot or you may break your needle. When coils are to the LEFT of raw edge use LEFT groove and when coils are to RIGHT of raw edge use the RIGHT groove.*



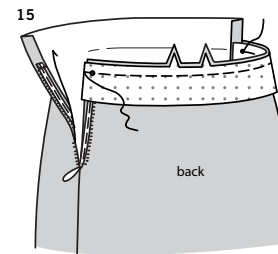
- 12. FOR VIEWS A, B -** Open zipper and press tape flat on WRONG side unrolling coils. Do not press coils. (Use a low iron setting.) On OUTSIDE, pin RIGHT side of zipper face down on RIGHT side of zipper opening (this is the opening on left skirt back). Have coil along seam line, tape within seam allowance and top stop 3/4" (2cm) below upper edge, as shown. Hand-based along center of tape. Position zipper foot at the top of zipper with RIGHT groove of foot over coil. Stitch along tape to the notch. Back-stitch to reinforce.



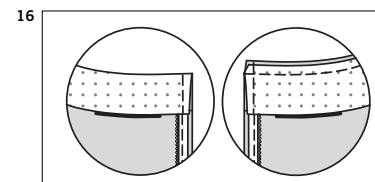
- 13.** Open out self-facing on front. On OUTSIDE, pin remaining half of zipper face down to LEFT side of LEFT zipper opening (this is the left opening on skirt front). Have the coil along seam line, the tape within seam allowance and top stop 1/8" (3mm) below foldline. Make sure that the foldline on skirt front is even with seamline on skirt back. Turn upper end of tape down, as shown. Hand-baste along center of tape. Position zipper foot at top of zipper with LEFT groove over coil. Stitch along tape to notch. Back-stitch to reinforce.



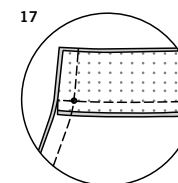
- 14.** Close zipper and check that it is invisible from the OUTSIDE. Pull free ends of tape away from seam allowance. Pin remaining LEFT side seam together below zipper. Position zipper foot all the way to the LEFT so the needle goes down through the outer notch of the foot. Start stitching seam 1/4" (6mm) above lowest stitch and slightly to the LEFT. Stitch remainder of seam connecting to previous stitching. If you prefer, open out each seam allowance at end of zipper and stitch tape to seam allowance.



- 15.** Apply interfacing to WRONG side of back facing (4), following manufacturer's directions. Open out LEFT opening edge on skirt back, rolling zipper teeth away from opening edge. With RIGHT sides together and raw edges even, pin back facing to upper edge of back, matching centers and small dots on right side edges. Stitch as far as small dot, keeping front free. Back-stitch at small dot. Trim seam; clip curves.

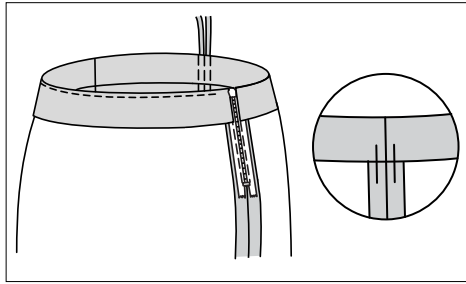


- 16.** Open out LEFT front opening edges, rolling zipper teeth away from opening edges. Turn front self-facing to OUTSIDE along foldline. Using an adjustable zipper foot, stitch 1/2" (1.3cm) from opening edges, keeping zipper teeth free. Stitch LEFT back opening edges in same manner, having facing turned to OUTSIDE along seam line. Trim corners. Do not trim center back edges.



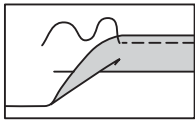
- 17.** Open out facings on RIGHT side edges. Turn waist seam allowance toward skirt. Stitch side seams of facing above small dot, keeping seam allowance out of the way. Back-stitch at small dot to reinforce seam.

18

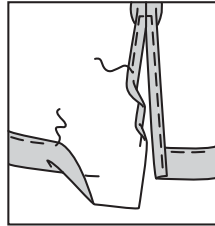


- 18. UNDERSTITCH** back facing as far as possible.
Turn facings to **INSIDE**; lightly press.
Secure facing to **RIGHT** seam allowances by tacking it by hand.

19



20



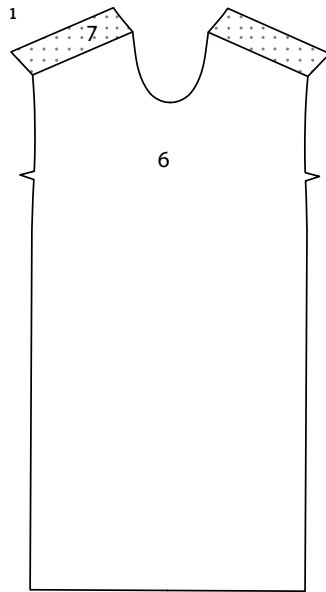
- 19. HEM A** – Press up hem on lower edge. Stitch **OR** zig-zag $1/4"$ (6mm) from raw edge.

- 20. HEM AND SIDE SLITS B** – Press up hem on lower edge. Stitch **OR** zig-zag $1/4"$ (6mm) from raw edge. Press under $5/8"$ (1.5cm) on slit opening edges. Press under $1/4"$ (6mm) on inner raw edge; stitch, squaring stitching above opening.

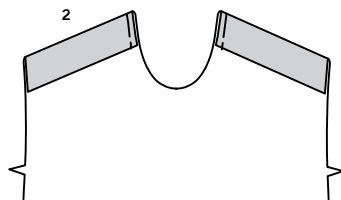
When wearing skirt, gather front along drawstring, as shown on envelope.

SKIRT C

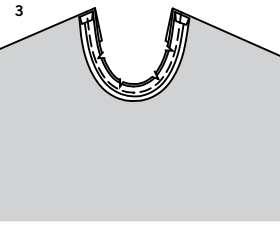
NOTE: Skirt is worn $1"$ (2.5cm) below waist.



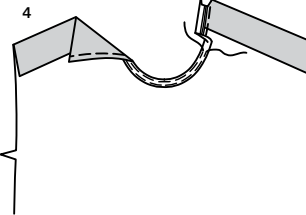
- 1.** Apply front interfacing (7) to **WRONG** side of front (6) sections above foldline, having raw edges even.



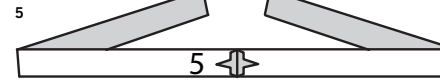
- 2.** Turn upper edges of front to **INSIDE** along foldline.
Baste inner raw edges together $1/4"$ (6mm) from raw edges.



- 3.** Open out one edge of single fold bias tape.
With **RIGHT** sides together, pin tape to front keyhole edge, having raw edges even and turning under $3/8"$ (1cm) just below folded edge.
Stitch in a $3/8"$ (1cm) seam
Trim seam; clip curves.
UNDERSTITCH tape.
TIP – Using front tissue pattern and an iron, shape bias tape to fit along curve, gently stretching fold edge and being careful not to shrink width.



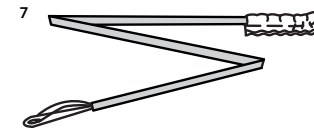
- 4.** Turn tape to **INSIDE**, forming casing; press.
Hand-baste close to inner edge of casing, leaving ends open.
On **OUTSIDE**, top-stitch as basted.



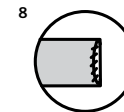
- 5.** Stitch notched ends of drawstring (5) sections.



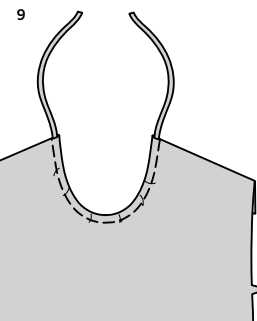
- 6.** Fold drawstring in half, lengthwise, with **RIGHT** sides together.
Stitch a scant $1/4"$ (6mm) from fold edge, stretching drawstring while stitching. With a needle, attach a strong thread to one end of loop.



- 7.** Draw needle eye forward, through fold, turning loop **RIGHT** side out.



- 8.** Tuck in raw edge on each end. Invisibly slip-stitch openings closed.



- 9.** On **INSIDE**, insert drawstring through casing, extending ends evenly.

CONTINUE SAME AS FOR SKIRT B- SEE STEPS 10 THROUGH 20.

When wearing skirt, gather front along drawstring, as shown on envelope.



Congrats!

You've completed your sewing adventure

SHARE YOUR LOOK



Post your pattern and tag us
@simplicity_creative_group and **#simplicitypatterns**
for a chance to be featured on our social media.

Look for more PDF patterns at **simplicity.com**

Have a question or need help with your sewing project call us at
1-888-588-2700

Simplicity
by design

Simplicity ©2023 a division of IG Design Group Americas Inc. • Atlanta, GA 30342 USA www.thedesigngroup.com • All Rights Reserved. www.simplicity.com • Made in the U.S.A. Fabriqué aux États-Unis.

To be used for individual private home use only and not for commercial or manufacturing purposes. • A usage privé seulement et non à des fins commerciales ou de production en série. • Para uso privado solamente, no se puede utilizar con propósitos de comercialización o de producción en serie.