

easy-to-sew



A



B



C



Very Easy

MISSES' SKIRT WITH HEMLINE VARIATIONS

Suggested Fabrics: Batiks, Cotton Blends, Cotton Lawn, Eyelet, Gauze, Lightweight Linen Blends, Voile. **Interfacing:** Lightweight Fusible.

Notions: A,B,C: Eight ¾" (1.5cm) buttons, 1 yd. (1.0m) of ¾" (1cm) elastic.

Sizes	4	6	8	10	12	14	16	18	20
European	30	32	34	36	38	40	42	44	46

BODY MEASUREMENTS: Select pattern size based on body measurements

Bust	29½	30½	31½	32½	34	36	38	40	42	Ins.
Waist	22	23	24	25	26½	28	30	32	34	"
Hip-9" below waist	31½	32½	33½	34½	36	38	40	42	44	"
Back-neck to waist	15¼	15½	15¾	16	16¼	16½	16¾	17	17¼	"

Skirt A - worn 1" below waist

60"	1¾	1¾	1¾	1¾	1¾	1¾	1¾	1¾	1¾	Yds.
-----	----	----	----	----	----	----	----	----	----	------

Interfacing 20" - ¾ yd.

Skirt B - worn 1" below waist

60"	2¼	2¼	2¼	2½	2½	3	3	3½	3½	Yds.
-----	----	----	----	----	----	---	---	----	----	------

Interfacing 20" - ¾ yd.

Skirt C - worn 1" below waist

60"	2½	2½	2½	2½	2½	3¼	3¼	3¼	3¼	Yds.
-----	----	----	----	----	----	----	----	----	----	------

Interfacing 20" - 1½ yds.

FINISHED GARMENT MEASUREMENTS (Includes Design and Wearing Ease)

A,B,C Hip	46½	47½	48½	49½	51	53	55	57	59	Ins.
-----------	-----	-----	-----	-----	----	----	----	----	----	------

Width, lower edge

Skirt A	90	91	92	93	94½	96½	98½	100½	102½	Ins.
---------	----	----	----	----	-----	-----	-----	------	------	------

Finished back length from waist

Skirt A	20	20	20	20	20	20	20	20	20	Ins.
---------	----	----	----	----	----	----	----	----	----	------

Skirt B,C	37	37	37	37	37	37	37	37	37	"
-----------	----	----	----	----	----	----	----	----	----	---

*with nap **without nap

Très Facile

JUPE AVEC VARIATIONS D'OURLET POUR JEUNES FEMMES

Tissus Conseillés: Batiks, Cotonnades, Linon de coton, Broderie anglaise, Gaze, Lin mélangés léger, Voile. **Entoilage:** Thermocollant léger.

Mercerie: A,B,C: 8 boutons de 1.5cm, 1.0m d'élastique de 1cm.

Tailles	4	6	8	10	12	14	16	18	20
Françaises	32	34	36	38	40	42	44	46	48
Européen	30	32	34	36	38	40	42	44	46

MESURES DU CORPS: Choisissez la taille du patron basée sur les mesures du corps

Poitrine	75	78	80	83	87	92	97	102	107	cm
Taille	56	58	61	64	67	71	76	81	87	"

Hanches (23cm au-dessous de la taille)

	80	83	85	88	92	97	102	107	112	cm
--	----	----	----	----	----	----	-----	-----	-----	----

Dos du cou à la taille	38.5	39.5	40	40.5	41.5	42	42.5	43	44	"
------------------------	------	------	----	------	------	----	------	----	----	---

Jupe A - se porte à 2.5cm au-dessous de la taille

150cm*	1.6	1.6	1.6	1.6	1.6	1.6	1.6	1.6	1.6	m
--------	-----	-----	-----	-----	-----	-----	-----	-----	-----	---

Entoilage 51cm - 0.7m

Jupe B - se porte à 2.5cm au-dessous de la taille

150cm*	2.1	2.1	2.1	2.1	2.2	2.7	2.8	2.9	2.9	m
--------	-----	-----	-----	-----	-----	-----	-----	-----	-----	---

Entoilage 51cm - 0.8m

Jupe C - se porte à 2.5cm au-dessous de la taille

150cm*	2.7	2.7	2.7	2.7	2.7	3.0	3.0	3.0	3.0	m
--------	-----	-----	-----	-----	-----	-----	-----	-----	-----	---

Entoilage 51cm - 1.1m

MESURES DES VÊTEMENTS FINI (Motif et aisance de port compris)

A,B,C Hanches	118	121	123	126	130	135	140	145	150	cm
---------------	-----	-----	-----	-----	-----	-----	-----	-----	-----	----

Largeur à l'ourlet

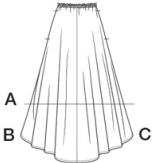
Jupe A	229	231	234	236	240	245	250	255	260	cm
--------	-----	-----	-----	-----	-----	-----	-----	-----	-----	----

Longueur finie – dos, taille à l'ourlet

Jupe A	51	51	51	51	51	51	51	51	51	cm
--------	----	----	----	----	----	----	----	----	----	----

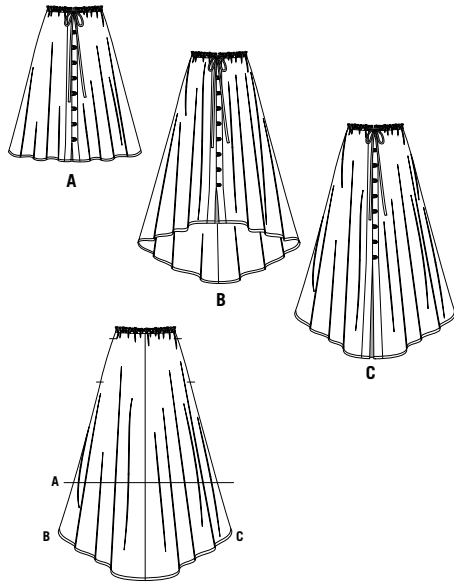
Jupe B,C	94	94	94	94	94	94	94	94	94	"
----------	----	----	----	----	----	----	----	----	----	---

*avec sens **sans sens

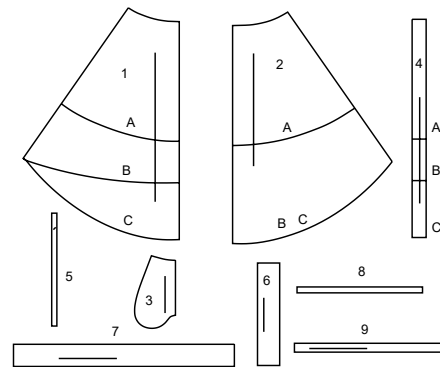


Simplicity®

Thank you for purchasing this Simplicity pattern.
We made every effort to provide you with a high quality product.



9 PIECES



- 1 FRONT - A,B,C
2 BACK - A,B,C
3 POCKET - A,B,C
4 FRONT BAND - A,B,C
5 LOOPS - A,B,C
6 UNDERLAP - A,B,C
7 CASING - A,B,C
8 ELASTIC GUIDE FOR WAIST - A,B,C
9 DRAWSTRING - A,B,C



www.simplicity.com



info@simplicity.com



1-888-588-2700

General Directions

The Pattern

SYMBOLS

- ↔ GRAIN LINE Place on straight grain of fabric parallel to selvage
- ↓ PLACE SOLID LINE on fold of fabric.
- CENTER FRONT OR BACK of garment.
- ▽ NOTCHES
- DOTS
- CUTTING LINE
- LENGTHEN OR SHORTEN LINES

SEAM ALLOWANCE: 5/8" (1.5cm) unless otherwise stated is included but not printed on MULTI-SIZE PATTERNS. Mark your size with colored felt tip pen. See chart on tissue for how to use MULTI-SIZE PATTERNS.

ADJUST IF NEEDED

Make adjustments before placing pattern on fabric.

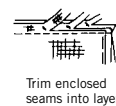
TO LENGTHEN:
Cut pattern between lengthen or shorten lines. Spread pattern evenly, the amount needed and tape to paper.

TO SHORTEN:
At lengthen or shorten lines, make an even pleat taking up amount needed. Tape in place.

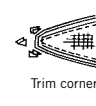
When lengthen or shorten lines are not given, make adjustments at lower edge of pattern.

Sewing

- SEW garment following **Sewing Directions**.
- PIN or machine-baste seams matching notches.
- STITCH 5/8" (1.5 cm) seams unless otherwise stated.
- PRESS seams open unless otherwise indicated clipping when necessary so seams will lie flat.
- TRIM seams to reduce bulk, as shown below.



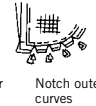
Trim enclosed seams into layers



Trim corners



Clip inner curves



Notch outer curves

Cutting/Marking

BEFORE CUTTING:

PRESS pattern pieces with a warm dry iron. PRE-SHRINK fabric by pre-washing washables or steam-pressing non-washables.

CIRCLE your cutting layout.

PIN pattern to fabric as shown in Cutting Layouts.

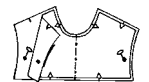
- FOR DOUBLE THICKNESS: Fold fabric with RIGHT sides together.
- FOR SINGLE THICKNESS: Place fabric RIGHT side up.
- FOR PILE, SHADED OR ONE WAY DESIGN FABRICS: Use "with nap" layouts

AFTER CUTTING:

Transfer markings to WRONG side of fabric before removing pattern. Use pin and chalk method or dressmaker's tracing paper and wheel.

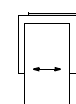
To Quick Mark:

- Snip edge of fabric to mark notches, ends of fold lines and center lines.
- Pin mark dots.

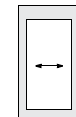


SPECIAL CUTTING NOTES

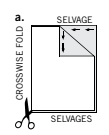
★ If layout shows a piece extending past fold, cut out all pieces except piece that extends.



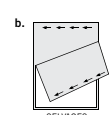
Open out fabric to single thickness. Cut extending piece on RIGHT side of fabric in position shown.



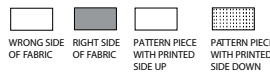
✱ Mark small arrows along both selvages indicating direction of nap or design. Fold fabric crosswise with RIGHT sides together, and cut along fold (a).



Turn one fabric layer around so arrows on both layers go in the same direction. Place RIGHT sides together (b).



Cutting Layouts

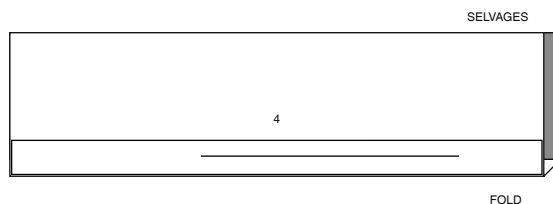


POSITION OF PATTERN PIECES MAY VARY SLIGHTLY ACCORDING TO YOUR PATTERN SIZE

INTERFACING A,B,C

USE PIECE 4

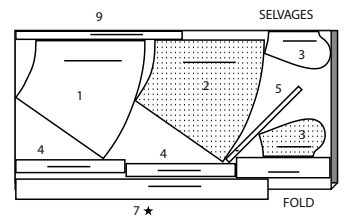
20" (51CM)
ALL SIZES



SKIRT A

USE PIECES 1 2 3 4 5 6 7 9
CUT ONE OF PIECES 5 6
PIECE 8 CUT OF ELASTIC

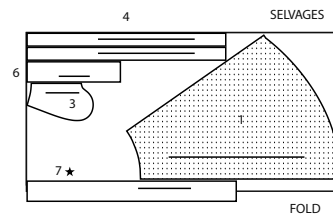
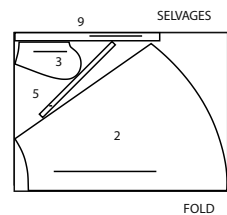
60" (150CM)
WITH NAP
ALL SIZES



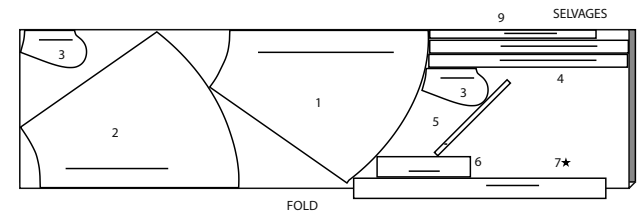
SKIRT B,C

USE PIECES 1 2 3 4 5 6 7 9
CUT ONE OF PIECES 5 6
PIECE 8 CUT OF ELASTIC

60" (150CM) WITH NAP
SIZES 4 6 8 10 12



60" (150CM)
WITH NAP
SIZES 14 16 18 20



SEWING TUTORIALS



Build your skills viewing short, easy-to-follow videos at simplicity.com/sewingtutorials

Sewing Directions

FABRIC KEY

Read **General Directions** on page 1 before you begin.

Sewing methods in **BOLD TYPE** have Sewing Tutorial Video available. Scan QR CODE to watch videos:

EDGE STITCH - see Machine Stitches: "how to edgestitch" video.

STAY STITCH - see Machine Stitches: "how to do stay-stitching" video.

UNDERSTITCH - see Machine Stitches: "how to understitch" video.

PATTERN PIECES WILL BE IDENTIFIED BY NUMBERS THE FIRST TIME THEY ARE USED.

STITCH SEAMS WITH RIGHT SIDES TOGETHER UNLESS OTHERWISE STATED.

SKIRT A, B, C

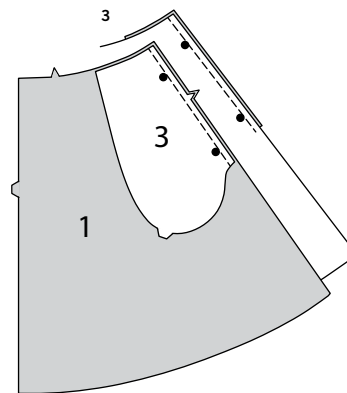
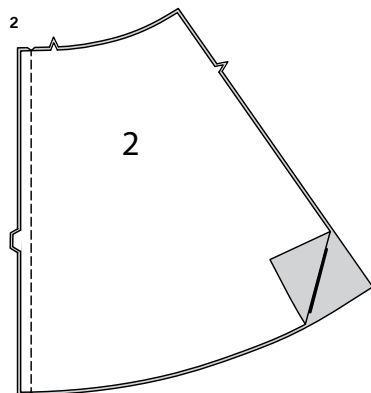
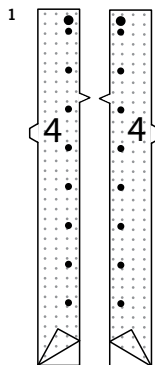
NOTE: Under each sub-heading, the first view will be illustrated, unless otherwise illustrated.

INTERFACING

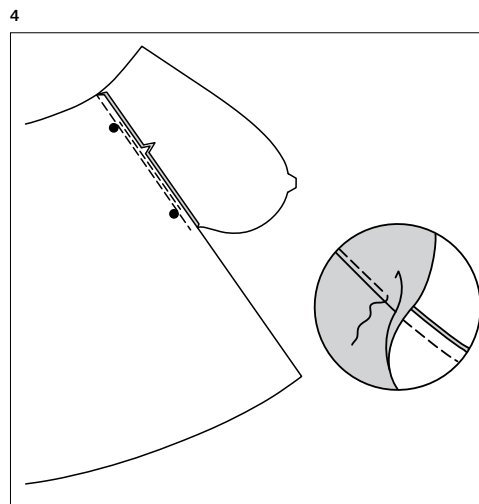
1. Fuse INTERFACING to wrong side of each matching FABRIC section, following manufacturer's instructions.

BACK AND FRONT

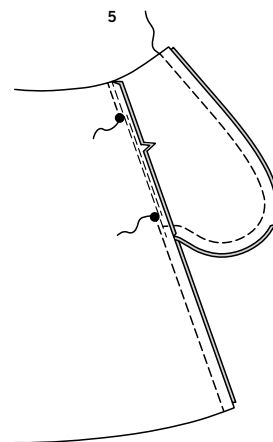
2. With **RIGHT** sides together, pin Back (2) sections together. Stitch center seam.



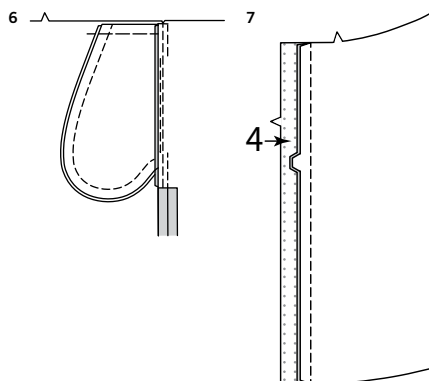
3. **NOTE:** Apply pockets to side edges of front and back as follows: With **RIGHT** sides together, pin Pocket (3) to Front (1) and back, matching large dots, having raw edges even. Stitch in 3/8" (1cm) seam.



4. Press seam toward pocket, pressing pocket out. **UNDERSTITCH** front pocket between dots.



5. Pin front to back at side seams, matching large dots. Stitch side seams, leaving an opening between large dots. Stitch pocket edges together from side seam to upper edge.



- 6.** Clip skirt back seam allowance below pocket. Press seam open below clip. Press pocket toward front. Baste upper edge of pocket to front, having raw edges even.

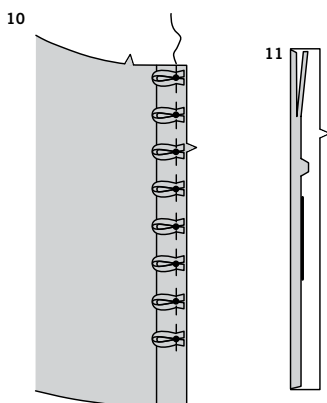
RIGHT FRONT BAND AND LOOPS



- 8.** Fold Loops (5) in half lengthwise, with RIGHT sides together. Stitch a scant 1/4" (6mm) from fold edge, stretching loop while stitching.

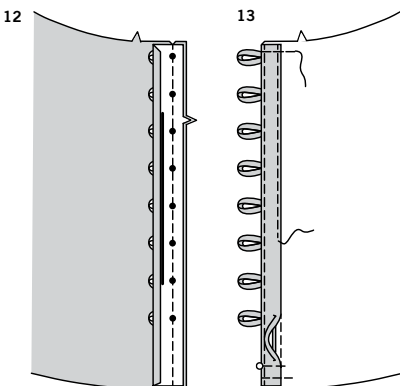


- 9.** With a needle, attach a strong thread to one end of loop. Draw needle eye forward, through fold, turning loop RIGHT side out.



- 10.** Cut eight loops, each 2-3/8" (6cm) long. On OUTSIDE, pin loops to front band, centering over small dots, having raw edges even; baste.

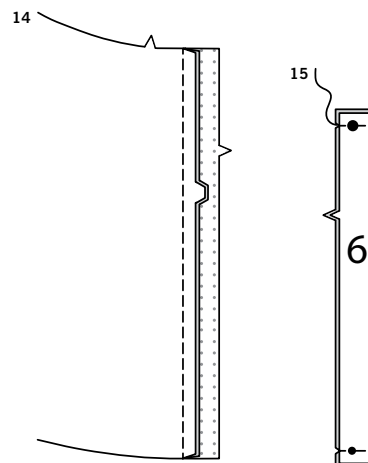
- 11.** Press under 5/8" (1.5cm) on one front band Facing (4) section along double notched edge. Trim pressed edge to 3/8" (1.0cm).



- 12.** With RIGHT sides together, pin facing to band (over loops), matching notches and dots. Stitch front edge. Trim seam.

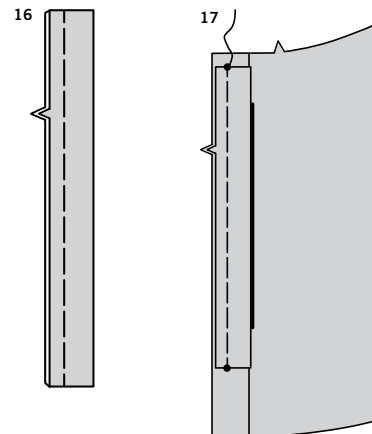
- 13.** Turn facing to inside, turning loops out; press. Pin pressed edge of band facing just over seam. **EDGESTITCH** long edges of band. Baste raw edges.

LEFT FRONT BAND AND UNDERLAP



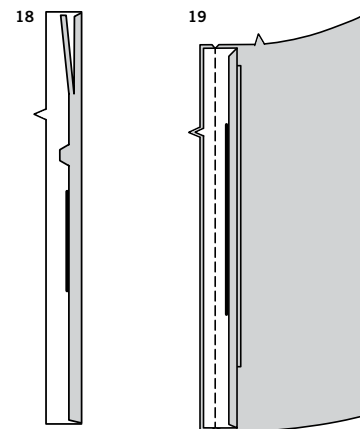
- 14.** Pin remaining interfaced Front band section to left skirt front, matching notches. Stitch front edge, trim seam. Press seam toward band, turning band out.

- 15.** With RIGHT sides together, fold Underlap (6) on foldline, matching dots. Stitch across ends; trim seams.



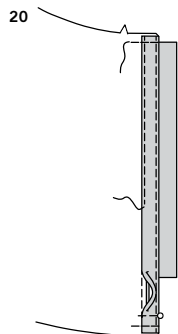
- 16.** Turn right side out; press. Baste raw edges.

- 17.** On OUTSIDE, pin underlap to front band, matching notches and dots; baste.

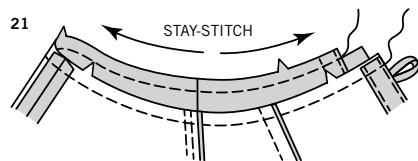


- 18.** Press under 5/8" (1.5cm) on remaining front band facing section along double notched edge. Trim pressed edge to 3/8" (1.0cm).

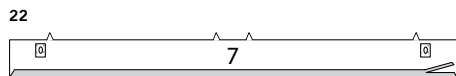
- 19.** With RIGHT sides together, pin facing to band (over underlap), matching notches and dots. Stitch front edge. Trim seam.



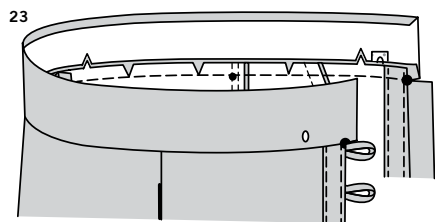
- 20.** Turn facing to inside, turning underlap out; press.
Pin pressed edge of band facing just over seam.
EDGESTITCH long edges of band. Baste raw edges.



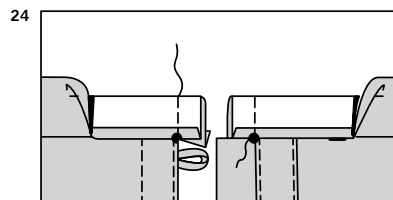
- 21.** **STAYSTITCH** upper edge of skirt.



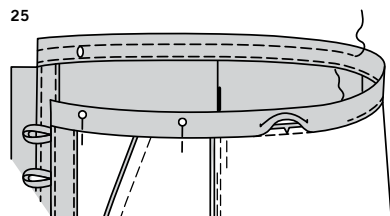
- 22.** Apply a small scrap of fusible interfacing to **WRONG** side of Casing (7) over buttonhole markings.
Make buttonholes at markings.
Press under 5/8" (1.5cm) on long unnotched edge of casing. Trim pressed edge to 3/8" (1.0cm).



- 23.** With **RIGHT** sides together, pin casing to skirt, matching centers, large dots and small dots to side seams, clipping skirt where necessary. Stitch; trim seam. Press seam toward casing; pressing casing out.



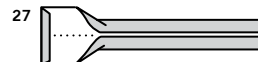
- 24.** Turn ends of casing to outside along foldline. Stitch ends along seam line. Trim seams and corners.



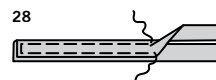
- 25.** Turn casing to inside; press.
On **INSIDE**, pin pressed edge of casing just over seam.
On **OUTSIDE**, stitch casing close to seam, catching in pressed edge.
To form casing row, stitch casing along stitching line.



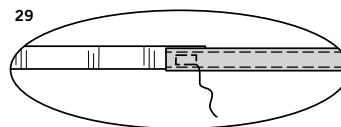
- 26.** Press under 1/4" (6mm) on one end of each Drawstring (9) section.
Fold drawstring in half lengthwise, with **WRONG** sides together.
Press, setting in a crease.



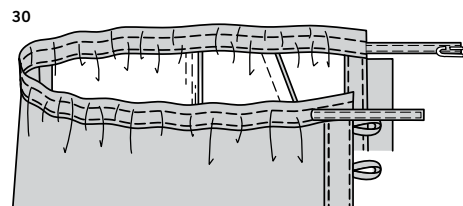
- 27.** Open out long edges of drawstring and turn them to **WRONG** side so that they meet at the crease. Press.



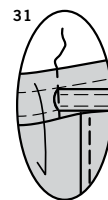
- 28.** Fold drawstring in half lengthwise, bringing pressed edges together. Stitch close to both long edges and pressed end.



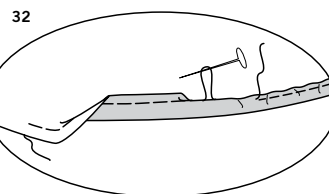
- 29.** Cut a piece of elastic using Elastic guide for waist (8) pattern piece.
Pin elastic ends to raw end of drawstring, overlapping ends 5/8" (1.5cm). Stitch overlapped ends together securely in a box, as shown.



- 30.** Attach a safety pin to one end of drawstring. Insert pin and drawstring through one buttonhole opening in casing. Work drawstring through entire casing and out through the other buttonhole so that lapped ends are just inside the buttonholes and ends of drawstring extend evenly.



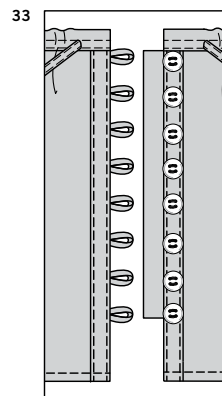
- 31.** On **OUTSIDE**, stitch drawstring to casing along buttonhole opening, stitching through all layers, casing and elastic.



FINISHING

HEM

- 32.** Stitch 1/4" (6mm) from lower edge of skirt using long machine stitches, as shown.
Turn up 5/8" (1.5cm) hem at lower edge of skirt, turning in 1/4" (6mm) on raw edge. Pull thread to ease in fullness. Stitch; press.



BUTTONS

- 33.** Sew buttons to left front band at dots, opposite loops.



Congrats!

You've completed your sewing adventure

SHARE YOUR LOOK



Post your pattern and tag us
@simplicity_creative_group and **#simplicitypatterns**
for a chance to be featured on our social media.

Look for more PDF patterns at **simplicity.com**

Have a question or need help with your sewing project call us at
1-888-588-2700

