

easy-to-sew



A



B



C



A

Easy

MISSES' PANTS

Suggested Fabrics: Chambray, Cotton Types, Lightweight Denim, Poplin, Sateen, Tencel, Washed Linen. **Interfacing:** Lightweight Fusible.

Notions: A,B: 1½ yds. (1.3m) of 1" (2.5cm) elastic. C: Three ¾" (2cm) buttons, 2¼ yds. (2.1m) of 1" (2.5cm) elastic.

Sizes	8	10	12	14	16	18	20	22	24	26
European	34	36	38	40	42	44	46	48	50	52

BODY MEASUREMENTS: Select pattern size based on body measurements

Bust	31½	32½	34	36	38	40	42	44	46	48	Ins.
Waist	24	25	26½	28	30	32	34	37	39	41½	"
Hip-9" below waist	33½	34½	36	38	40	42	44	46	48	50	"
Back-neck to waist	15¾	16	16¼	16½	16¾	17	17¼	17¾	17½	17¾	"

Pants A	45**	2%	2%	2%	2%	2%	3	3	3%	3%	3%	Yds.
60**	1%	2	2	2¼	2¼	2%	2%	2¾	2¾	2¾	2¾	"

Interfacing 20" - 1½ yds.

Pants B	45**	2¼	2¼	2%	2½	2%	2%	2%	2%	2%	Yds.
60**	1½	1%	1%	1%	2	2%	2%	2%	2%	2%	"

Interfacing 20 - ¼ yd.

Pants C	45**	2%	2%	2%	2¾	2%	2%	2%	2%	2%	Yds.
60**	1¾	1%	1%	1%	2	2%	2%	2%	2%	2%	"

Interfacing 20 - ¼ yd.

FINISHED GARMENT MEASUREMENTS (Includes Design and Wearing Ease)

A,B,C Hip	39	40	41½	43½	45½	47½	49½	51½	53½	55½	Ins.
-----------	----	----	-----	-----	-----	-----	-----	-----	-----	-----	------

Width, each leg

Pants A	17½	18	18½	19	19½	20	20½	21	21½	22	Ins.
Pants B,C	16½	17	17¾	18½	19¼	20	20¾	21½	22¼	23	"

Finished side length from waist

Pants A	41¾	42	42¼	42½	42¾	43	43¾	43½	43¾	44	Ins.
Pants B	35¾	36	36¼	36½	36¾	37	37¼	37½	37¾	38	"
Pants C	37¾	38	38¼	38½	38¾	39	39¼	39½	39¾	40	"

*with nap **without nap

Facile

PANTALONS POUR JEUNES FEMMES

Tissus Conseillés: Chambray, Cottonnades, Denim léger, Popeline, Satin de coton, Tencel, Lin lavé. **Entoilage:** Thermocollant léger.

Mercerie: A,B: 1.3m d'élastique de 2.5cm. C: 3 boutons de 2cm, 2.1m d'élastique de 2.5cm.

Tailles	8	10	12	14	16	18	20	22	24	26
Françaises	36	38	40	42	44	46	48	50	52	54
Européen	34	36	38	40	42	44	46	48	50	52

MESURES DU CORPS: Choisissez la taille du patron basée sur les mesures du corps

Poitrine	80	83	87	92	97	102	107	112	117	122	cm
Taille	61	64	67	71	76	81	87	94	99	106	"

Hanches (23cm au-dessous de la taille)

	85	88	92	97	102	107	112	117	122	127	cm
Dos du cou à la taille	40	40,5	41,5	42	42,5	43	44	44	44,5	44,5	"

Pantalon A	115cm*	2.4	2.4	2.4	2.7	2.7	2.8	2.8	2.9	2.9	2.9	m
150cm*	1.8	1.8	1.9	2.1	2.1	2.2	2.2	2.6	2.6	2.6	"	

Entoilage 51cm - 1.1m

Pantalon B	115cm*	2.1	2.1	2.2	2.3	2.3	2.4	2.4	2.4	2.4	m
150cm*	1.4	1.4	1.5	1.5	1.9	1.9	2.0	2.2	2.2	2.2	"

Entoilage 51cm - 0.3m

Pantalon C	115cm*	2.2	2.2	2.2	2.6	2.6	2.7	2.7	2.7	2.7	m
150cm*	1.6	1.6	1.8	1.8	1.9	1.9	2.0	2.2	2.2	2.2	"

Entoilage 51cm - 0.3m

MESURES DES VÊTEMENTS FINI (Motif et aisance de port compris)

A,B,C Hanches	99	102	105	110	116	121	126	131	136	141	cm
---------------	----	-----	-----	-----	-----	-----	-----	-----	-----	-----	----

Largeur, chaque jambe

Pantalon A	44	46	47	48	50	51	52	53	55	56	cm
Pantalon B,C	42	43	45	47	49	51	53	55	57	58	"

Longueur finie - côté, taille à l'ourlet

Pantalon A	106	107	107	108	109	109	110	110	111	112	cm
Pantalon B	91	91	92	93	93	94	95	95	96	97	"
Pantalon C	96	97	97	98	98	99	100	100	101	102	"

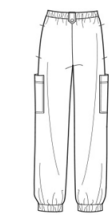
*avec sens **sans sens



A



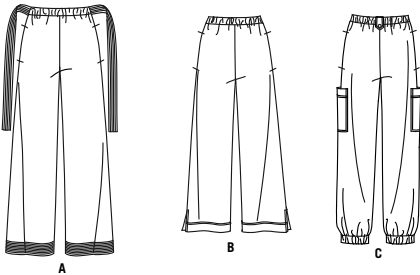
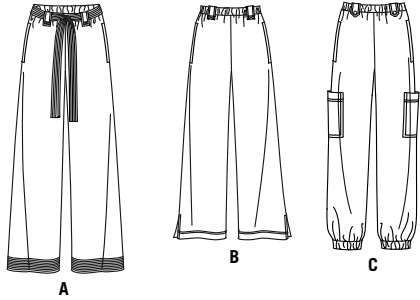
B



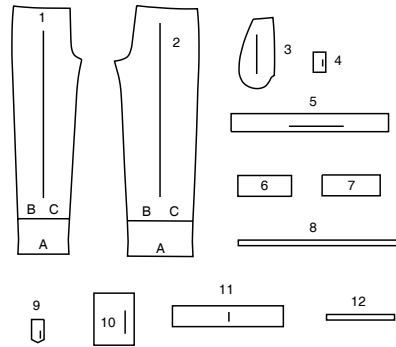
C

Simplicity

Thank you for purchasing this Simplicity pattern. We made every effort to provide you with a high quality product.



12 PIECES



- 1 FRONT - A,B,C
- 2 BACK - A,B,C
- 3 POCKET - A,B,C
- 4 CARRIER - A,B
- 5 TIE END - A
- 6 FRONT CASING - A,B,C
- 7 BACK CASING - A,B,C
- 8 ELASTIC GUIDE FOR WAIST - A,B,C
- 9 CARRIER - C
- 10 LOWER POCKET - C
- 11 LEG BAND - C
- 12 ELASTIC GUIDE FOR LEG - C

General Directions

The Pattern

- SYMBOLS**
- ↔ GRAIN LINE Place on straight grain of fabric parallel to selvage
 - ⇄ PLACE SOLID LINE on fold of fabric.
 - CENTER FRONT OR BACK OF GARMENT.
 - ∇ NOTCHES
 - ○ DOTS
 - CUTTING LINE
 - == LENGTHEN OR SHORTEN LINES

SEAM ALLOWANCE: 5/8" (1.5cm) unless otherwise stated is included but not printed on MULTI-SIZE PATTERNS. Mark your size with colored felt tip pen. See chart on tissue for how to use MULTI-SIZE PATTERNS.

ADJUST IF NEEDED

Make adjustments before placing pattern on fabric.

TO LENGTHEN: Cut pattern between lengthen or shorten lines. Spread pattern evenly, the amount needed and tape to paper.

TO SHORTEN: At lengthen or shorten lines, make an even pleat taking up amount needed. Tape in place.

When lengthen or shorten lines are not given, make adjustments at lower edge of pattern.

Cutting/Marking

BEFORE CUTTING:

PRESS pattern pieces with a warm dry iron. PRE-SHRINK fabric by pre-washing washables or steam-pressing non-washables.

CIRCLE your cutting layout.

PIN pattern to fabric as shown in Cutting Layouts.

• FOR DOUBLE THICKNESS: Fold fabric with RIGHT sides together.

• FOR SINGLE THICKNESS: Place fabric RIGHT side up.

• FOR PILE, SHADED OR ONE WAY DESIGN FABRICS: Use "with nap" layouts

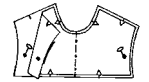
AFTER CUTTING:

Transfer markings to WRONG side of fabric before removing pattern. Use pin and chalk method or dressmaker's tracing paper and wheel.

To Quick Mark:

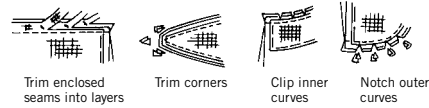
• Snip edge of fabric to mark notches, ends of fold lines and center lines.

• Pin mark dots.



Sewing

- SEW garment following **Sewing Directions**.
- PIN or machine-baste seams matching notches.
- STITCH 5/8" (1.5 cm) seams unless otherwise stated.
- PRESS seams open unless otherwise indicated clipping when necessary so seams will lie flat.
- TRIM seams to reduce bulk, as shown below.



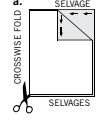
SPECIAL CUTTING NOTES

★ If layout shows a piece extending past fold, cut out all pieces except piece that extends.

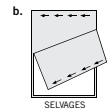


Open out fabric to single thickness. Cut extending piece on RIGHT side of fabric in position shown.

✱ Mark small arrows along both selvages indicating direction of nap or design. Fold fabric crosswise with RIGHT sides together, and cut along fold (a).



Turn one fabric layer around so arrows on both layers go in the same direction. Place RIGHT sides together (b).



Cutting Layouts

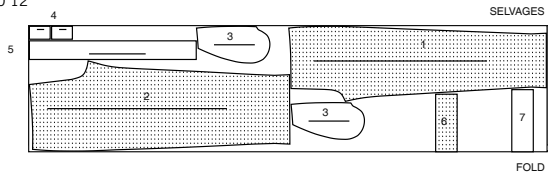
- WRONG SIDE OF FABRIC
- RIGHT SIDE OF FABRIC
- PATTERN PIECE WITH PRINTED SIDE UP
- PATTERN PIECE WITH PRINTED SIDE DOWN
- ★ SEE SPECIAL CUTTING NOTES

POSITION OF PATTERN PIECES MAY VARY SLIGHTLY ACCORDING TO YOUR PATTERN SIZE

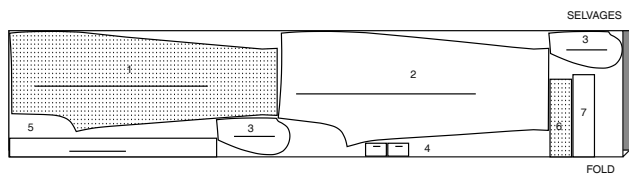
PANTS A

USE PIECES 1 2 3 4 5 6 7
PIECE 8 CUT OF ELASTIC

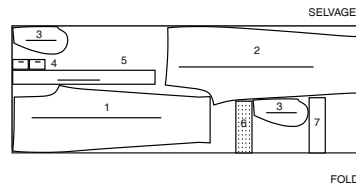
45" (115CM) WITH NAP
SIZES 8 10 12



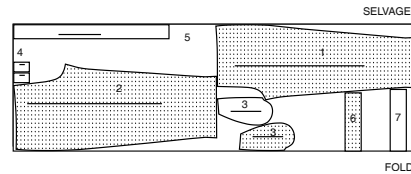
45" (115CM) WITH NAP
SIZES 14 16 18 20 22 24 26



60" (150CM) WITH NAP
SIZES 8 10 12 14 16 18 20



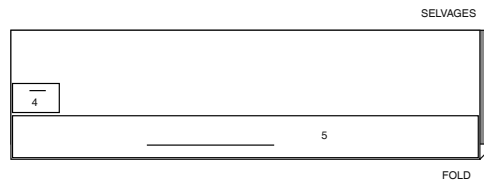
60" (150CM) WITH NAP
SIZES 22 24 26



INTERFACING A

USE PIECES 4 5

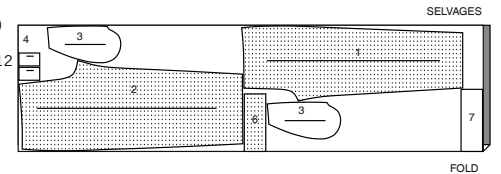
20" (51CM) ALL SIZES



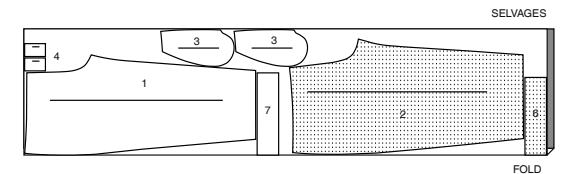
PANTS B

USE PIECES 1 2 3 4 6 7
PIECE 8 CUT OF ELASTIC

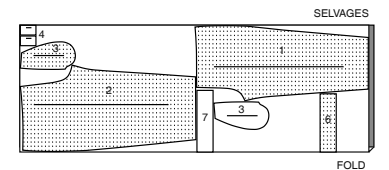
45" (115CM) WITH NAP
SIZES 8 10 12



45" (115CM) WITH NAP
SIZES 14 16 18 20 22 24 26



60" (150CM) WITH NAP
ALL SIZES



CUTTING LAYOUTS CONTINUED ON PAGE 2

S9785

2 of 4

INTERFACING B

USE PIECE 4

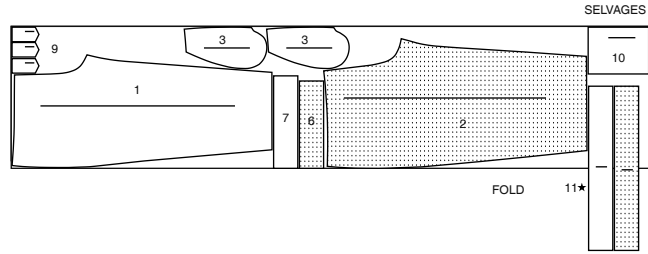
20" (51CM)
ALL SIZES

SELVAGES



FOLD

45" (115CM)
WITH NAP
SIZES 14 16 18 20 22 24 26



SELVAGES

FOLD

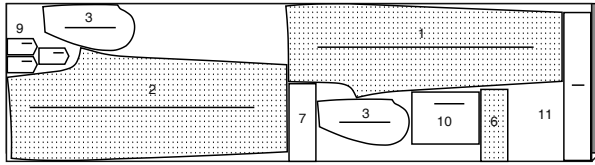
11*

PANTS C

USE PIECES 1 2 3 6 7 9 10 11
PIECES 8 12 CUT OF ELASTIC

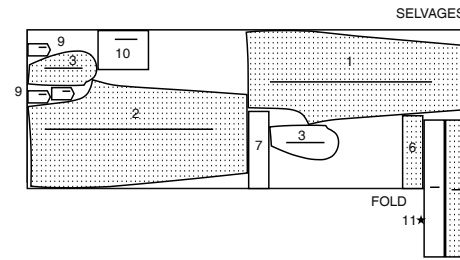
45" (115CM) WITH NAP
SIZES 8 10 12

SELVAGES



FOLD

60" (150CM)
WITH NAP
ALL SIZES



SELVAGES

FOLD

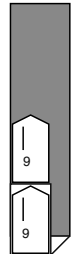
11*

INTERFACING C

USE PIECE 9

20" (51CM)
ALL SIZES

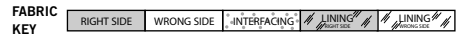
SELVAGE



FOLD

SEL

Sewing Directions



Read **General Directions** on page 1 before you begin.

Sewing methods in **BOLD TYPE** have Sewing Tutorial Video available. Scan QR CODE to watch videos:

EDGESTITCH - see [how to edgestitch](#) video.

STITCH IN THE DITCH - see [how to stitch in the ditch](#) video.

TOPSTITCH - see [how to topstitch](#) video.

SLIPSTITCH - see [how slipstitch](#) video.

SEWING TUTORIALS



Build your skills viewing short, easy-to-follow videos at simplicity.com/sewingtutorials

PATTERN PIECES WILL BE IDENTIFIED BY NUMBERS THE FIRST TIME THEY ARE USED.

STITCH SEAMS WITH RIGHT SIDES TOGETHER UNLESS OTHERWISE STATED.

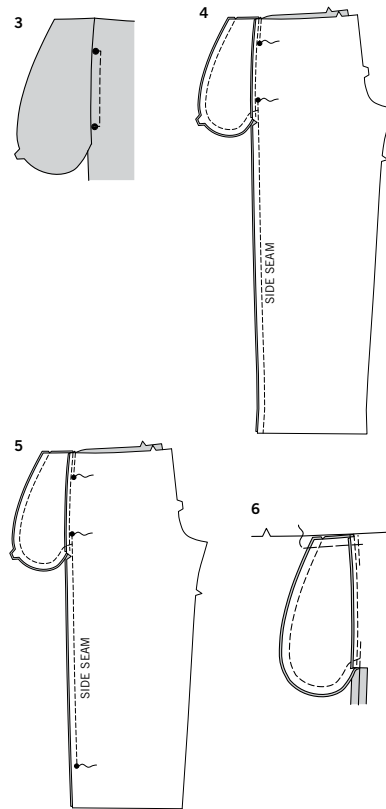
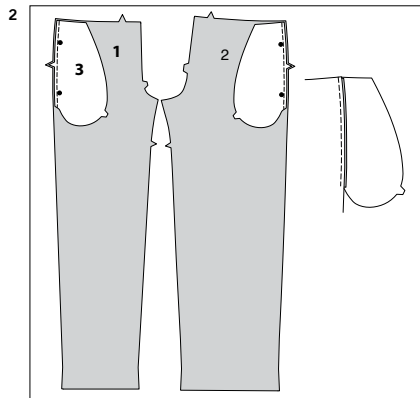
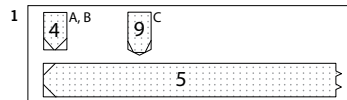
PANTS A, B, C

INTERFACING

1. Trim corners of INTERFACING, as shown. Fuse interfacing to wrong side of each matching FABRIC section, following manufacturer's instructions.

FRONT AND BACK

2. Stitch one Pocket (3) section to Front (1) and Back (2) at each side, matching dots. Stitch in 3/8" (1cm) seam. Press seam toward pocket, pressing pocket out.

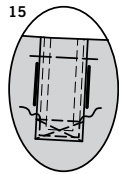
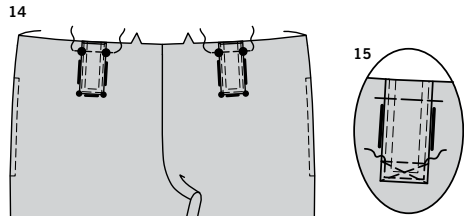
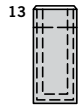
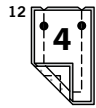
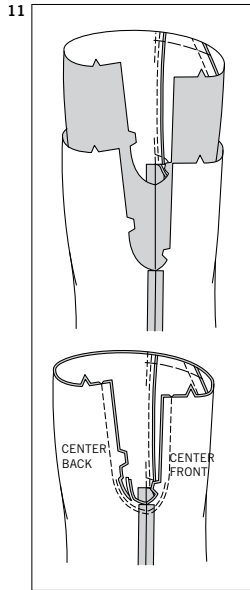
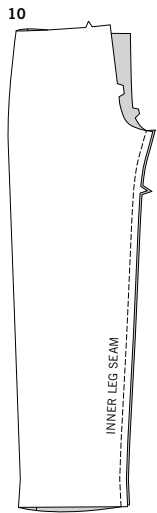
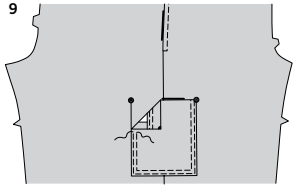
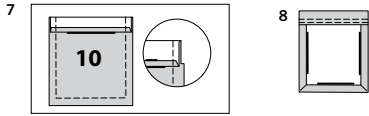


3. **TOPSTITCH** front pocket opening edge between dots, pivoting at dots- see [how to topstitch](#) video.

4. **FOR VIEWS A, C:** Pin back to front at sides, **RIGHT** sides together, matching notches and dots. Stitch, leaving free between dots. Stitch pocket edges together to side seams. Clip back seam allowances below pockets.

5. **FOR VIEW B:** Pin back to front at sides, **RIGHT** sides together, matching notches and dots. Stitch to lower dot, leaving free between upper dots. Stitch pocket edges together to side seams. Clip back seam allowances below pockets.

6. Turn pockets toward front along seamlines; press. Baste upper edge in place.



LOWER POCKET C

7. Press under 1/4" (6mm) on upper edge of lower pocket (10). Turn upper edge to OUTSIDE along foldline, forming facing. Stitch along seam line on raw edges. Trim seam allowance in the facing area to 1/4" (6mm).
8. Turn corners RIGHT side out, turning facing to the WRONG side; press, pressing under raw edges along stitching. Stitch facing close to inner edge and 1/4" (6mm) above first stitching.
9. On OUTSIDE, pin pocket to front and back along pocket line, matching dots. Stitch close to sides and lower edge and 1/4" (6mm) away.

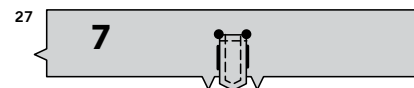
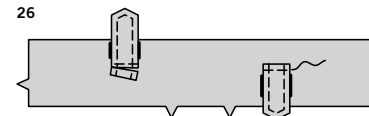
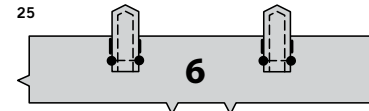
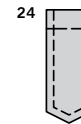
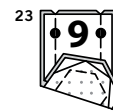
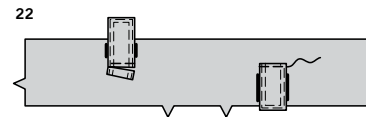
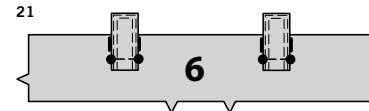
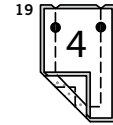
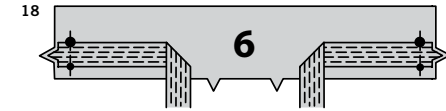
REMAINING SEAMS

10. Stitch front to back at inner leg seam.

11. For crotch seam, turn one pants leg right side out; slip inside remaining pants leg. Stitch. Stitch again 1/4" (6mm) away in seam allowance along curve as shown. Trim close to second stitching.

CARRIERS A

12. For each carrier, pin one interfaced Carrier (4) to one without, RIGHT sides together. Stitch in 3/8" (1cm) seam, leaving end with large dots open. Trim seams.
13. Turn RIGHT side out; press. Baste raw edges. EDGESTITCH finished edges of carrier. Stitch again 1/4" (6mm) away- see how to edgestitch video.
14. Pin carriers to pants front, matching small and large dots, having upper edges even. Baste raw edges.
15. Stitch carriers to front along stitching lines, continuing stitching sides and lower edge along edgestitching, keeping carrier free above stitching line.



CASING AND ELASTIC

VIEW A

16. Fold Tie end (5) in half, lengthwise, with RIGHT sides together. Stitch in 3/8" (1cm) seam, leaving notched end open. Trim seams.
17. Turn RIGHT side out; press. Baste raw edges. Stitch tie end 1/4" (6mm) from one long edge. Stitch again 1/4" (6mm) below first stitching. Continue stitching rows to other long edge, spacing each 1/4" (6mm) apart.

18. On OUTSIDE, pin tie ends to Front casing (6), matching notches, small and large dots; baste.

VIEW B

19. For each carrier, pin one interfaced Carrier (4) to one without, RIGHT sides together. Stitch in 3/8" (1cm) seam, leaving end with large dots open. Trim seams.

20. Turn RIGHT side out; press. Baste raw edges. EDGESTITCH finished edges of carrier. Stitch again 1/4" (6mm) away- see how to edgestitch video.

21. On OUTSIDE, pin carriers (interfaced side up) to Front casing (6), matching large dots, having seamline toward notched edge. Baste. Stitch along seamline between large dots.

22. Trim carrier seam allowance to a scant 1/4" (6mm), being careful not to cut casing. Turn carrier down; press. Stitch 1/4" (6mm) from upper edge of carrier, encasing trimmed edge.

VIEW C

23. For each carrier, pin one interfaced Carrier (9) to one without, RIGHT sides together. Stitch in 3/8" (1cm) seam, leaving end with large dots open. Trim seams.

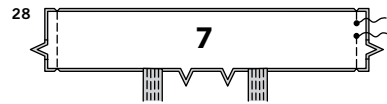
24. Turn RIGHT side out; press. Baste raw edges. Stitch 1/4" (6mm) from finished edges of carrier.

25. On OUTSIDE, pin two carriers (interfaced side up) to Front casing (6), matching large dots, having seamline toward notched edge. Baste. Stitch along seamline between large dots.

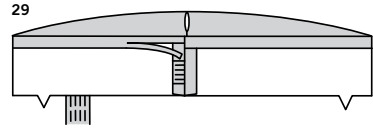
26. Trim carrier seam allowance to a scant 1/4" (6mm), being careful not to cut casing. (Save remaining carrier for back.) Turn carriers down; press. Stitch 1/4" (6mm) from upper edge of carrier, encasing trimmed edge.

27. Apply remaining carrier to Back casing (7) in the same manner as front casing.

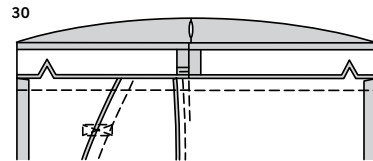
VIEWS A, B, C



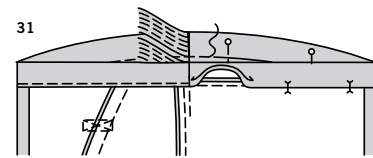
28. With RIGHT sides together, pin front casing to Back casing (7) at sides, matching notches and small dots. Stitch sides, leaving left side open between small dots, back stitching at small dots to reinforce seam.



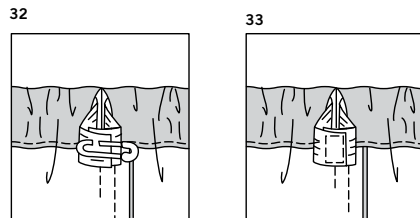
29. Press under 5/8" (1.5cm) on unnotched edge of casing. Trim pressed edge to 3/8" (1.0cm).



30. With RIGHT sides together, pin casing to pants, matching notches, centers and side seams. Stitch; trim seams. Press seams toward casing, pressing casing out.

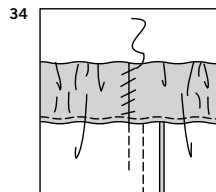


31. On INSIDE, pin pressed edge of casing just over seam, folding casing along foldline, placing pins on OUTSIDE. (Finished edge of casing extends just below seam.) On OUTSIDE, **STITCH IN THE DITCH** or groove of the seam, catching in finished edge of casing on INSIDE- see **how to stitch in the ditch** video.
TIP- To conceal the stitches in the ditch or groove of the seam, try using a zipper foot, spreading the pants and casing away from the seam with your fingers.



32. Cut a piece of elastic using Elastic guide for waist (8) pattern piece. Insert elastic through opening in casing. Overlap ends and hold with a safety pin.

33. Try on pants and adjust to fit. Stitch ends of elastic together securely.

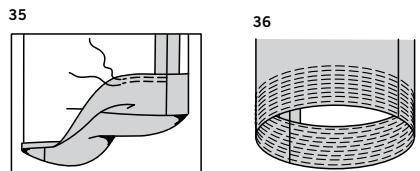


34. SLIPSTITCH opening edges of casing together. Distribute fullness evenly- see **how slipstitch** video.

TIP- To secure elastic so it won't twist in wearing, stitch through all thicknesses of casing in the groove of each seam.

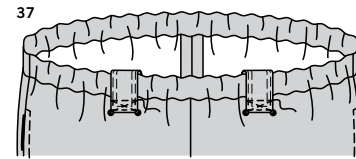
FINISHING

VIEW A



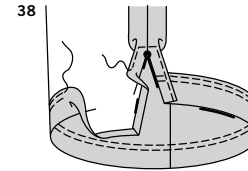
35. Press up 1-1/2" (3.8cm) hem on lower edge of pants. Press under 1/4" (6mm) on raw edge. Stitch close to inner pressed edge. Stitch again 1/4" (6mm) below first stitching.

36. Continue stitching rows to lower edge of pants, spacing each 1/4" (6mm) apart.

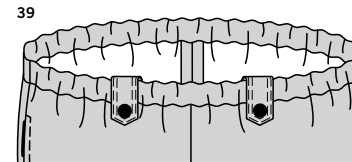


VIEW B

37. Pin carriers to pants front, matching small dots. Stitch carrier to front along stitching lines, continuing stitching sides and lower edge along edgestitching.

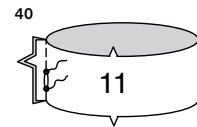


38. Press up 1-1/2" (3.8cm) hem on lower edge of pants. Press under 1/4" (6mm) on raw edge. Stitch close to inner pressed edge. Stitch again 1/4" (6mm) below first stitching. Press under 5/8" (1.5cm) on slit opening edges. Press under 1/4" (6mm) on raw edge. Stitch, squaring stitching above dot.

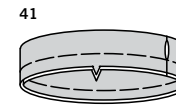


VIEW C

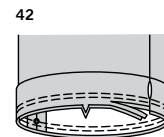
39. Pin carriers to pants, matching small dots. Sew one button to each carrier at dot, through all layers.



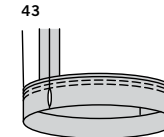
40. With RIGHT sides together, stitch seam of Leg band (11), leaving an opening between small dots, as shown. Back-stitch at dots to reinforce seam. Press seam open.



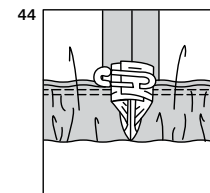
41. Fold leg band in half, lengthwise, with WRONG sides together, having raw edges even. Baste raw edges together. The side with the opening is the underside of the leg band.



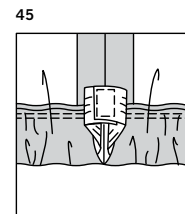
42. With the underside of leg band facing you, pin leg band to pants, matching seam to inner leg seam and dots to side seams. Stitch along seam line. Stitch again 1/4" (6mm) from first stitching within seam allowance. Trim close to second stitching.



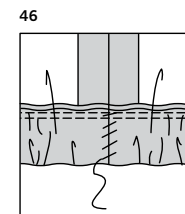
43. Press seam toward pants, pressing leg band out.



44. Cut two pieces of elastic, each using Elastic guide for leg (12) pattern piece. Insert elastic through opening in leg band. Overlap ends and hold with a safety pin.



45. Try on pants and adjust to fit. Stitch ends of elastic together securely.



46. SLIPSTITCH opening edges of leg band together. Distribute fullness evenly.
TIP- To secure elastic so it won't twist in wearing, stitch through all thicknesses of leg band in the groove of each seam.



Congrats!

You've completed your sewing adventure

**SHARE
YOUR** LOOK



Post your pattern and tag us
@simplicity_creative_group and **#simplicitypatterns**
for a chance to be featured on our social media.

Look for more PDF patterns at **simplicity.com**

Have a question or need help with your sewing project call us at
1-888-588-2700

Simplicity
by design

Simplicity ©2023 a division of IG Design Group Americas Inc. • Atlanta, GA 30342 USA www.thedesigngroup.com • All Rights Reserved. www.simplicity.com • Made in the U.S.A. Fabriqué aux États-Unis.

To be used for individual private home use only and not for commercial or manufacturing purposes. • A usage privé seulement et non à des fins commerciales ou de production en série. • Para uso privado solamente, no se puede utilizar con propósitos de comercialización o de producción en serie.