



Very Easy

Très Facile

MISSES' KNIT TOPS

Suggested Fabrics: Stretch Knits only such as Activewear Knits, Bamboo, ITY Knit, Rib Knit. See Pick-A-Knit® Rule.

Notions: A: One ¼" (1cm) button. C: One pkg. of ½" (1.3cm) single fold bias tape.

Sizes	XS	S	M	L	XL	XXL
European	4-6	8-10	12-14	16-18	20-22	24-26
European	30-32	34-36	38-40	42-44	46-48	50-52

BODY MEASUREMENTS: Select pattern size based on body measurements

Bust	29½-30½	31½-32½	34-36	38-40	42-44	46-48	Ins.
Waist	22-23	24-25	26½-28	30-32	34-37	39-41½	"
Hip-9" below waist	31½-32½	33½-34½	36-38	40-42	44-46	48-50	"
Back-neck to waist	15½-15½	15¾-16	16¼-16½	16¾-17	17¼-17½	17¾-18	"

Top A	60**	¾	¾	¾	¾	¾	¾	Yds.
Top B	60**	¾	¾	1	1	1	1	Yds.
Top C	60**	1	1	1	1	1½	1½	Yds.

FINISHED GARMENT MEASUREMENTS (Includes Design and Wearing Ease)

A,B,C Bust	30	32	35½	39½	43½	47½	Ins.
Width, lower edge							
Top A	24	26	29½	33½	37½	41½	Ins.
Finished back length from base of neck							
Top A	14½	15	15½	16	16½	17	Ins.

with nap *without nap

HAUTS EN TRICOT POUR JEUNES FEMMES

Tissus Conseillés: Seulement pour tricot extensibles tels que Tricot pour Vêtements de Sport, Tricot bambou, Tricot interlock en fil retors, Tricot à côtes. Voyez la Règle-Pour-Choisir-Un-Tricot®.

Mercerie: A: 1 bouton de 1cm. C: 1 paquet de ruban de biais simple de 1.3cm.

Tailles	TP/XS	P/S	M/M	G/L	TG/XL	TTG/XXL
Françaises	32-34	36-38	40-42	44-46	48-50	52-54
Européen	30-32	34-36	38-40	42-44	46-48	50-52

MESURES DU CORPS: Choisissez la taille du patron basée sur les mesures du corps

Poitrine	75-77	80-83	87-92	97-102	107-112	117-122	cm
Taille	56-58	61-64	67-71	76-81	87-94	99-105	"
Hanches (23cm au-dessous de la taille)	80-83	85-88	92-97	102-107	112-117	122-127	cm
Dos du cou à la taille	39-39.5	40-40.5	41.5-42	42.5-43	44-44.5	45-45.5	"

Haut A	150cm*	0.6	0.6	0.6	0.6	0.6	0.7	m
Haut B	150cm*	0.8	0.8	1.0	1.0	1.0	1.0	m
Haut C	150cm*	0.8	1.0	1.0	1.0	1.1	1.1	m

MESURES DES VÊTEMENTS FINI (Motif et aisance de port compris)

A,B,C Poitrine	76	81	90	100	110	121	cm
Largeur à l'ourlet							
Haut A	61	66	75	85	95	105	cm
Longueur finie – dos, votre nuque à l'ourlet							
Haut A	37	38	39	41	42	43	cm

*avec sens **sans sens



A



B



C

Use the 1 inch (2.54cm) box to ensure you are using rule at 100%

Utilisez la boîte de 2.54 cm pour vous assurer d'utiliser la règle à 100%.

Utilizar un cuadrado de 2.54 cm para asegurarse de estar usando la regla al 100%.

PICK-A-KNIT® RULE

FOR THIS PATTERN - 4" (10 cm) OF KNIT FABRIC MUST STRETCH CROSSWISE FROM HERE
POUR CE PATRON - LE JERSEY DOIT S'ÉTIRER DANS LA LAGEUR DE 4" (10 cm) DEPUIS ICI
PARA ESTE PATRON - LAS MALLAS DEBEN ESTIRARSE A LO ANCHO POR 4" (10 cm) DESDE AQUI



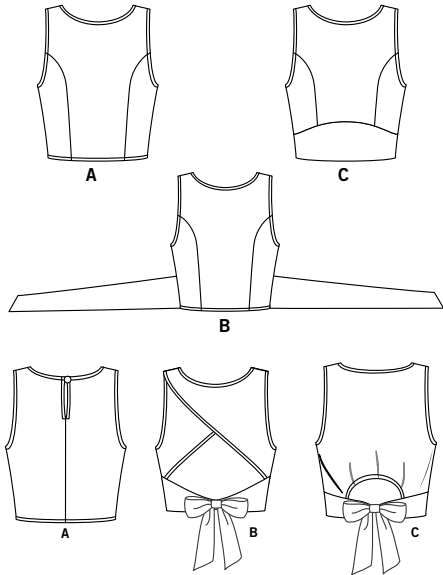
TO HERE 50%
JUSQUE LA 50%
HASTA ALLA 50%



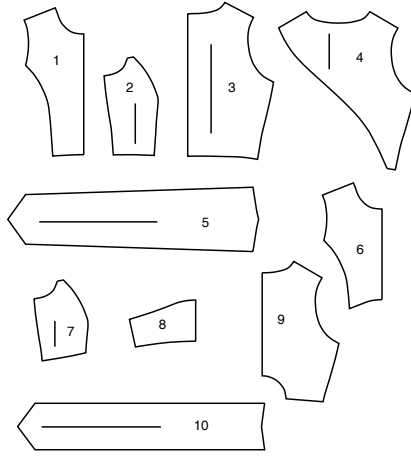
When using the Pick-A-Knit® rule to measure your fabrics stretch capacity, rule must be viewed or printed at 100%.
Quand vous utilisez la règle Pick-A-Knit® pour mesurer la capacité d'élasticité des tissus, la règle doit être visible ou imprimée à 100%.
Al utilizar la regla Pick-A-Knit® para medir la capacidad de elasticidad de las telas, la regla debe estar visible o impresa al 100%.

Simplicity®

Thank you for purchasing this Simplicity pattern. We made every effort to provide you with a high quality product.



10 PIECES



- 1 FRONT - A,B
- 2 SIDE FRONT - A,B
- 3 BACK - A
- 4 BACK - B
- 5 TIE END - B
- 6 UPPER FRONT - C
- 7 UPPER SIDE FRONT - C
- 8 LOWER FRONT - C
- 9 BACK - C
- 10 TIE END - C

General Directions

The Pattern

- SYMBOLS**
- ↔ GRAIN LINE Place on straight grain of fabric parallel to selvage
 - ⇄ PLACE SOLID LINE on fold of fabric.
 - - - CENTER FRONT OR BACK OF garment.
 - ∇ NOTCHES
 - ○ DOTS
 - CUTTING LINE
 - == LENGTHEN OR SHORTEN LINES

SEAM ALLOWANCE: 5/8" (1.5cm) unless otherwise stated is included but not printed on MULTI-SIZE PATTERNS. Mark your size with colored felt tip pen. See chart on tissue for how to use MULTI-SIZE PATTERNS.

ADJUST IF NEEDED
Make adjustments before placing pattern on fabric.

TO LENGTHEN:
Cut pattern between lengthen or shorten lines. Spread pattern evenly, the amount needed and tape to paper.

TO SHORTEN:
At lengthen or shorten lines, make an even pleat taking up amount needed. Tape in place.

When lengthen or shorten lines are not given, make adjustments at lower edge of pattern.

Cutting/Marking

BEFORE CUTTING:
PRESS pattern pieces with a warm dry iron. PRE-SHRINK fabric by pre-washing washables or steam-pressing non-washables.

CIRCLE your cutting layout.

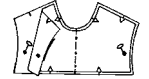
PIN pattern to fabric as shown in Cutting Layouts.

- FOR DOUBLE THICKNESS: Fold fabric with RIGHT sides together.
- FOR SINGLE THICKNESS: Place fabric RIGHT side up.
- FOR PILE, SHADED OR ONE WAY DESIGN FABRICS: Use "with nap" layouts

AFTER CUTTING:
Transfer markings to WRONG side of fabric before removing pattern. Use pin and chalk method or dressmaker's tracing paper and wheel.

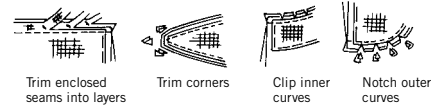
To Quick Mark:

- Snip edge of fabric to mark notches, ends of fold lines and center lines.
- Pin mark dots.



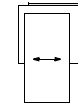
Sewing

- SEW garment following **Sewing Directions**.
- PIN or machine-baste seams matching notches.
- STITCH 5/8" (1.5 cm) seams unless otherwise stated.
- PRESS seams open unless otherwise indicated clipping when necessary so seams will lie flat.
- TRIM seams to reduce bulk, as shown below.



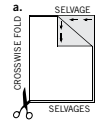
SPECIAL CUTTING NOTES

★ If layout shows a piece extending past fold, cut out all pieces except piece that extends.

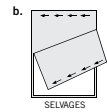


Open out fabric to single thickness. Cut extending piece on RIGHT side of fabric in position shown.

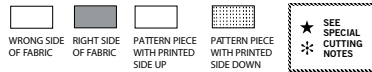
✱ Mark small arrows along both selvages indicating direction of nap or design. Fold fabric crosswise with RIGHT sides together, and cut along fold (a).



Turn one fabric layer around so arrows on both layers go in the same direction. Place RIGHT sides together (b).



Cutting Layouts



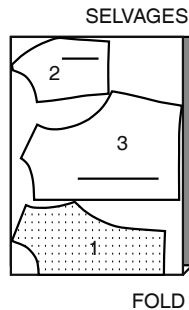
POSITION OF PATTERN PIECES MAY VARY SLIGHTLY ACCORDING TO YOUR PATTERN SIZE

A,B,C TOPS: SIZED FOR STRETCH KNITS ONLY

TOP A

USE PIECES 1 2 3

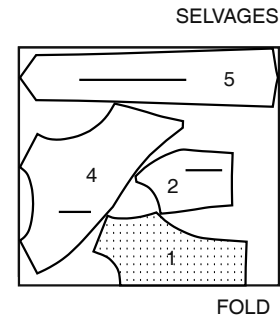
60" (150CM) WITH NAP ALL SIZES



TOP B

USE PIECES 1 2 4 5

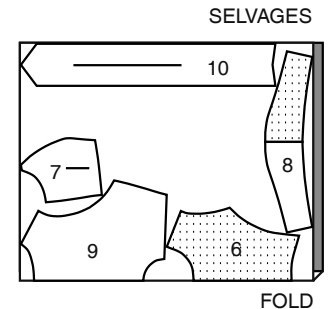
60" (150CM) WITH NAP ALL SIZES



TOP C

USE PIECES 6 7 8 9 10

60" (150CM) WITH NAP ALL SIZES



SEWING TUTORIALS



Build your skills viewing short, easy-to-follow videos at simplicity.com/sewingtutorials

Sewing Directions

FABRIC KEY RIGHT SIDE WRONG SIDE INTERFACING LINING LINING

Read **General Directions** on page 1 before you begin.

Sewing methods in **BOLD TYPE** have Sewing Tutorial Video available. Scan QR CODE to watch videos:

NARROW HEM- see sewing narrow hems video.

UNDERSTITCH- see how to understitch video.

SIMPLY THE BEST SEWING TECHNIQUES...
FOR KNITS

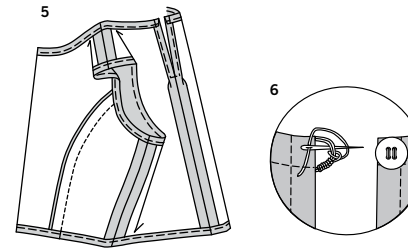
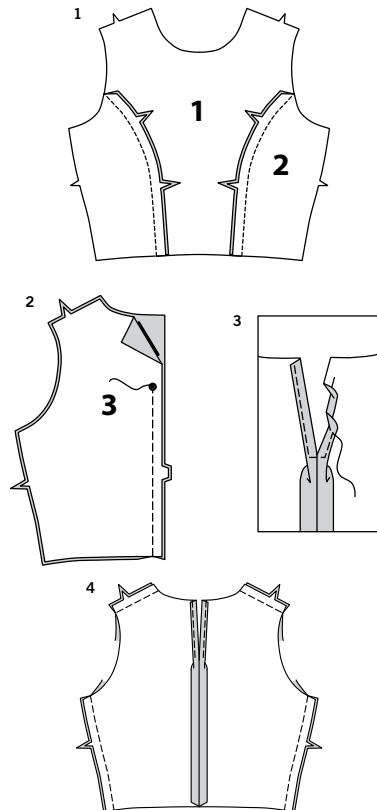
- Use a ball point or stretch needle.
- Decrease pressure on presser foot for heavy sweater knits; increase
- Stretch knits need seams that are supple enough to “give” with the fabric. You can sew them with straight stitches (stretching the fabric slightly as you sew), narrow zig-zag stitches or one of the stretch stitches built into many conventional machines, or on your serger.
- Some knits require very little or no pressing while sewing. Use the appropriate temperature setting. Press lightly or use steam.
- To prevent shoulder seams from stretching, pin center of hem tape, clear elastic or twill tape along seam line on front shoulder edges, then stitch the shoulder seams.
- Hems can be stitched in place 1/4" (6mm) from raw edge.

PATTERN PIECES WILL BE IDENTIFIED BY NUMBERS THE FIRST TIME THEY ARE USED.

STITCH SEAMS WITH RIGHT SIDES TOGETHER UNLESS OTHERWISE STATED.

TOP A

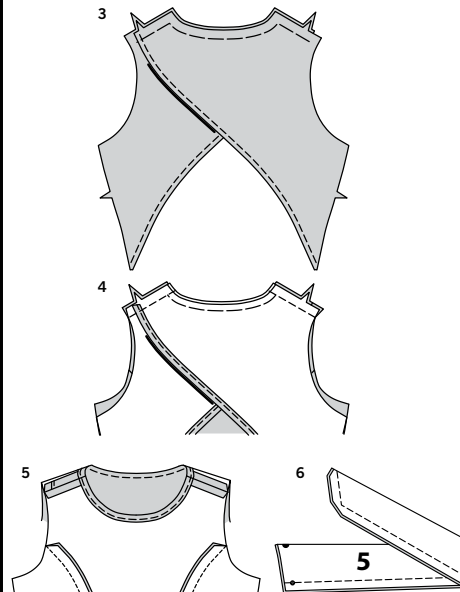
1. Pin side front (2) sections to front (1), matching notches. Stitch. Turn seam toward center front.
2. Stitch center back seam of back (3) sections below large dot, back-stitching at large dot to reinforce seam.
3. Press under 5/8" (1.5cm) on slit opening edges. Press under 1/4" (6mm) on raw edge; stitch, squaring stitching 1/4" (6mm) below opening.
4. Stitch front to back at shoulder and side seams.



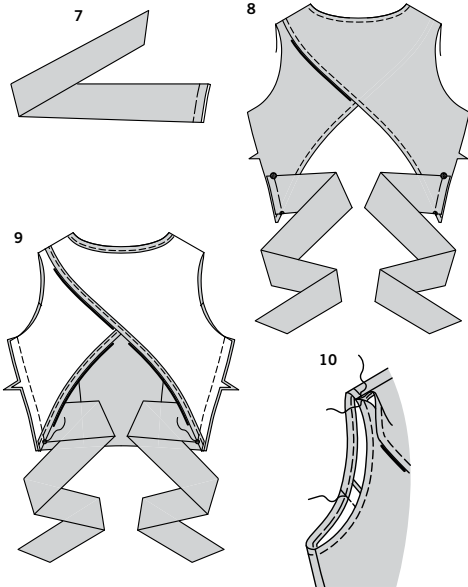
5. Make a **NARROW HEM** on neck, armhole, and lower edges of top- see **sewing narrow hems** video.
6. Sew button to **RIGHT** back at neck edge. Make a thread loop on **LEFT** back, as shown, making it large enough to fit over button.

TOP B

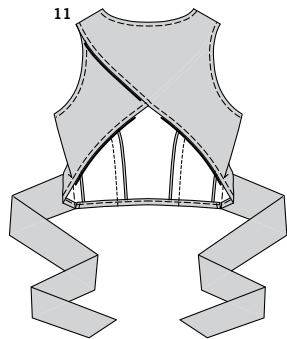
1. Pin side front (2) sections to front (1), matching notches. Stitch. Turn seam toward center front.
2. Make a **NARROW HEM** on lower angled edge of each back (4) section- see **sewing narrow hems** video.



3. On **OUTSIDE**, lap **RIGHT** back over **LEFT** back, matching centers back and having edges even, as shown. Baste shoulder edges together.
4. Stitch back to front at shoulder seams.
5. Make a **NARROW HEM** on neck edge.
6. Fold each tie end (5) in half, lengthwise, with **RIGHT** sides together. Stitch raw edges together, leaving end with small and large dots open. Trim seam and corners.



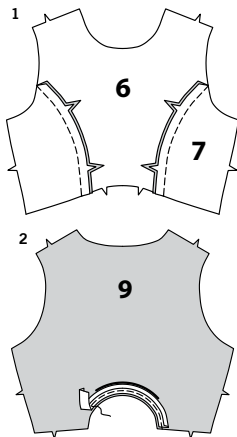
- 7.** Turn tie end; lightly press. Baste raw edges together.
- 8.** On **OUTSIDE**, baste tie ends to side edges of back, matching small and large dots, having raw edges even.
- 9.** Stitch front to back at side seams (over raw edges of ties), matching small dots. Turn side seams toward front.
- 10.** Press under 5/8" (1.5cm) hem allowance on armhole edge. To form narrow hem, tuck under raw edge to meet crease; press. Hand-baste in place on **INSIDE**. On **OUTSIDE**, stitch as basted, breaking and reinforcing stitches at shoulder seams. Remove basting.



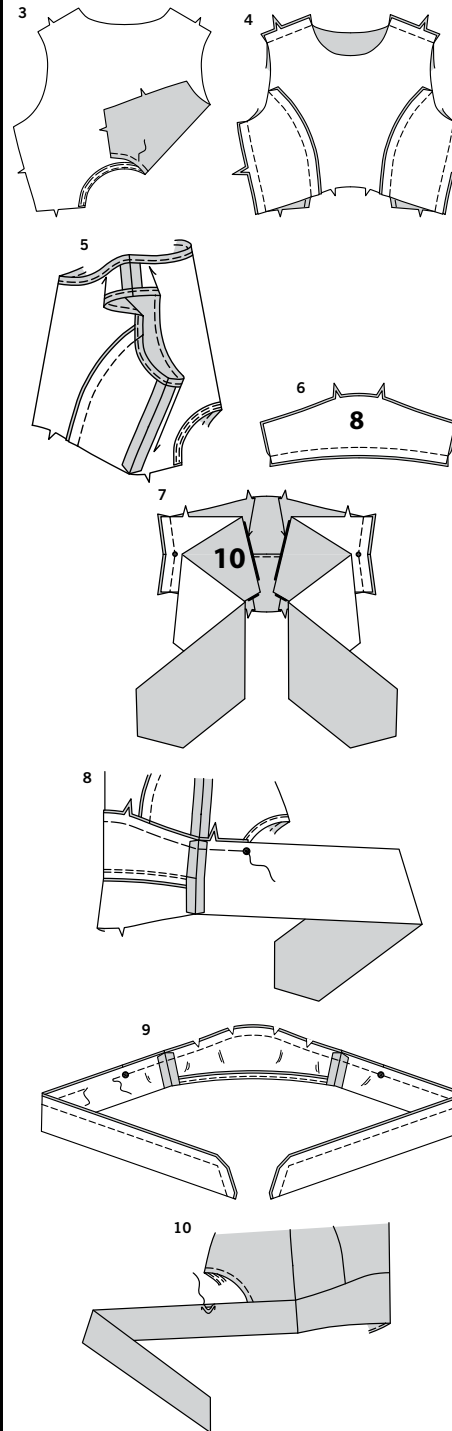
- 11.** Make a **NARROW HEM** on lower edge of front between side seams, keeping ties free.

When wearing, fasten ties into a bow on back, as shown on envelope.

TOP C



- 1.** Pin upper side front (7) sections to upper front (6), matching notches. Stitch. Turn seam toward center front.
- 2.** Open out one edge of single fold bias tape. With **RIGHT** sides together, pin tape to lower edge of back (9) along inner curve, having raw edges even. Stitch in a 3/8" (1cm) seam. Trim seam; clip curves. **UNDERSTITCH** tape- see [how to understitch](#) video.



- 3.** Turn tape to **INSIDE**; press. Hand-baste close to inner edge of tape. On **OUTSIDE**, top-stitch as basted. Remove basting.
- 4.** Stitch back to front at shoulder and side seams.
- 5.** Make a **NARROW HEM** on neck and armhole edges- see [sewing narrow hems](#) video.

NOTE: You have cut out two lower front sections. One section will be used as the lower front and will be stitched to the outside of the top. The remaining section will be used as the facing, and when completed, will be on the inside of the top, facing your body.

- 6.** Stitch long unnotched edges of lower front (8) and facing together. **UNDERSTITCH** facing.
- 7.** Open out lower front and facing. Pin tie end (10) sections to side seams matching small dots and having raw edges even. Stitch.

- 8.** With **RIGHT** sides together, pin lower front and ties to lower edge of bodice, matching centers front, side seams, and large dots. Baste.

- 9.** Tightly roll up bodice and with **RIGHT** sides together, bring raw edges of lower front and ties together, sandwiching bodice. Pin carefully, matching centers front, side seams, and large dots. Stitch through all thicknesses, leaving an opening in one tie seam 2" to 3" (5-7.5cm) long for turning, being careful not to catch in free edges of bodice. Back-stitch at each end of opening to reinforce seam. Trim seam and corners. Clip curves.

- 10.** Turn top **RIGHT** side out through opening in tie. Slip-stitch opening closed.

When wearing, fasten ties into a bow on back, as shown on envelope.



Congrats!

You've completed your sewing adventure

SHARE YOUR LOOK



Post your pattern and tag us
@simplicity_creative_group and **#simplicitypatterns**
for a chance to be featured on our social media.

Look for more PDF patterns at **simplicity.com**

Have a question or need help with your sewing project call us at
1-888-588-2700

Simplicity
by design

Simplicity ©2023 a division of IG Design Group Americas Inc. • Atlanta, GA 30342 USA www.thedesigngroup.com • All Rights Reserved. www.simplicity.com • Made in the U.S.A. Fabriqué aux États-Unis.

To be used for individual private home use only and not for commercial or manufacturing purposes. • A usage privé seulement et non à des fins commerciales ou de production en série. • Para uso privado solamente, no se puede utilizar con propósitos de comercialización o de producción en serie.