



Average

MISSES' TOPS

Suggested Fabrics: Challis, Chambray, Cotton Types, Gingham, Linens, Poplin, Silky Types.
Interfacing: Lightweight Fusible.

Notions: A,C: Six ¼" (1.5cm) buttons. B,D: Five ¼" (1.5cm) buttons. Also for D: ¼ yd. (0.6m) of ¼" (1cm) elastic.

Sizes	8	10	12	14	16	18	20	22	24	26
European	34	36	38	40	42	44	46	48	50	52

BODY MEASUREMENTS: Select pattern size based on body measurements

Bust	31½	32½	34	36	38	40	42	44	46	48	Ins.
Waist	24	25	26½	28	30	32	34	37	39	41½	"
Hip-9" below waist	33½	34½	36	38	40	42	44	46	48	50	"
Back-neck to waist	15¾	16	16¼	16½	16¾	17	17¼	17½	17¾	17¾	"

Top A	45**	2%	2%	2¼	2¼	2¼	2¼	2¾	2¾	2¾	2¾ Yds.
	60**	1¾	1¾	1¾	1%	1%	1%	1%	2	2%	2% "

Interfacing - 20", ¼ yd.											
Top B	45*	1½	1½	1½	1½	1½	1½	1½	1½	1½	Yds.
	60**	1%	1%	1%	1%	1¼	1¼	1¼	1%	1½	1½ "

Interfacing B,C,D - 20", ¾ yd.

Top C	45**	2	2	2	2	2%	2%	2¼	2¼	2%	Yds.
	60**	1%	1¼	1¼	1%	1¾	1¾	1¾	1%	2	"

Top D	45**	1%	1%	1¾	1¾	1¾	1%	1%	1%	2	2 Yds.
	60**	1	1%	1%	1%	1%	1½	1%	1%	1%	"

FINISHED GARMENT MEASUREMENTS (Includes Design and Wearing Ease)

A,B,C,D Bust 45 46 47½ 49½ 51½ 53½ 55½ 57½ 59½ 61½ Ins.

A,B,C,D Waist 44 45 46½ 48½ 50½ 52½ 54½ 56½ 58½ 60½ "

Width, lower edge

Top A,B,C,D 44 45 46½ 48½ 50½ 52½ 54½ 56½ 58½ 60½ Ins.

Finished back length from base of neck

Top A,C 23¾ 24 24¼ 24½ 24¾ 25 25¼ 25½ 25¾ 26 Ins.

Top B,D 17¾ 18 18¼ 18½ 18¾ 19 19¼ 19½ 19¾ 20 "

*with nap **without nap

Moins Facile

HAUTS POUR JEUNES FEMMES

Tissus Conseillés: Challis, Chambray, Cotonnades, Vichy, Toile de lin, Popeline, Tissus soyeux.
Entoilage: Thermocollant léger.

Mercerie: A,C: 6 boutons de 1.5cm. B,D: 5 boutons de 1.5cm. Aussi pour D: 0.6m d'élastique de 1cm.

Tailles	8	10	12	14	16	18	20	22	24	26
Françaises	36	38	40	42	44	46	48	50	52	54
Européennes	34	36	38	40	42	44	46	48	50	52

MESURES DU CORPS: Choisissez la taille du patron basée sur les mesures du corps

Poitrine 80 83 87 92 97 102 107 112 117 122 cm

Taille 61 64 67 71 76 81 87 94 99 106 "

Hanches (23cm au-dessous de la taille)

85 88 92 97 102 107 112 117 122 127 cm

Dos du cou à la taille 40 40.5 41.5 42 42.5 43 44 44 44.5 44.5 "

Haut A 115cm* 2.0 2.0 2.0 2.1 2.1 2.1 2.6 2.6 2.6 2.7 m

150cm* 1.6 1.6 1.6 1.8 1.8 1.8 1.8 1.9 1.9 2.0 "

Entoilage 51cm, 0.8m

Haut B 115cm* 1.3 1.4 1.4 1.4 1.4 1.4 1.6 1.8 1.8 1.8 m

150cm* 1.1 1.1 1.1 1.1 1.2 1.2 1.2 1.3 1.3 1.4 "

Entoilage B,C,D - 51cm, 0.3m

Haut C 115cm* 1.9 1.9 1.9 1.9 1.9 2.0 2.0 2.1 2.1 2.1 m

150cm* 1.1 1.2 1.2 1.5 1.5 1.6 1.6 1.6 1.8 1.9 "

Haut D 115cm* 1.50 1.50 1.50 1.60 1.60 1.60 1.80 1.80 1.90 1.90 m

150cm* 1.00 1.10 1.10 1.30 1.30 1.30 1.30 1.40 1.50 1.50 "

MESURES DES VÊTEMENTS FINI (Motif et aisance de port compris)

A,B,C,D Poitrine 114 117 121 126 131 136 141 146 151 156 cm

A,B,C,D Taille 112 114 118 123 128 133 138 144 149 154 "

Largeur à l'ourlet

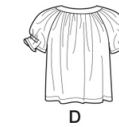
Haut A,B,C,D 112 114 118 123 128 133 138 144 149 154 cm

Longueur finie - dos, votre nuque à l'ourlet

Haut A,C 60 61 62 62 63 64 64 65 65 66 cm

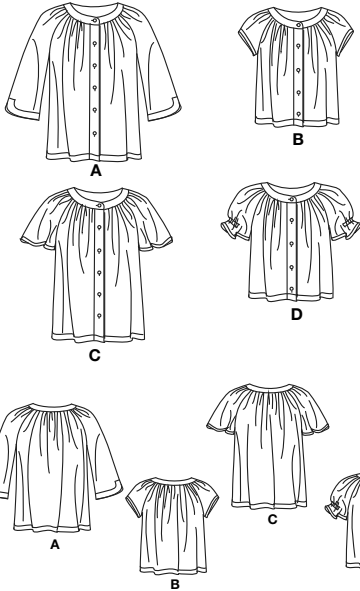
Haut B,D 45 46 46 47 48 48 49 50 50 51 "

*avec sens **sans sens

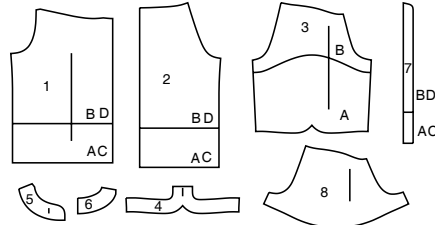


Simplicity®

Thank you for purchasing this Simplicity pattern.
We made every effort to provide you with a high quality product.



8 PIECES



- 1 Front -A,B,C,D
- 2 Back-A,B,C,D
- 3 Sleeve-A,B
- 4 Sleeve Facing-A
- 5 Front Neck Band-A,B,C,D
- 6 Back Neck Band-A,B,C,D
- 7 guide for buttonholes-A,B,C,D
- 8 Sleeve-C,D

General Directions

The Pattern

- SYMBOLS**
- ↔ GRAIN LINE Place on straight grain of fabric parallel to selvage
 - ⇄ PLACE SOLID LINE on fold of fabric.
 - CENTER FRONT OR BACK OF garment.
 - ∇ NOTCHES
 - ○ DOTS
 - CUTTING LINE
 - == LENGTHEN OR SHORTEN LINES

SEAM ALLOWANCE: 5/8" (1.5cm) unless otherwise stated is included but not printed on MULTI-SIZE PATTERNS. Mark your size with colored felt tip pen. See chart on tissue for how to use MULTI-SIZE PATTERNS.

ADJUST IF NEEDED

Make adjustments before placing pattern on fabric.

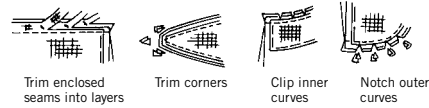
TO LENGTHEN:
Cut pattern between lengthen or shorten lines. Spread pattern evenly, the amount needed and tape to paper.

TO SHORTEN:
At lengthen or shorten lines, make an even pleat taking up amount needed. Tape in place.

When lengthen or shorten lines are not given, make adjustments at lower edge of pattern.

Sewing

- SEW garment following **Sewing Directions**.
- PIN or machine-baste seams matching notches.
- STITCH 5/8" (1.5 cm) seams unless otherwise stated.
- PRESS seams open unless otherwise indicated clipping when necessary so seams will lie flat.
- TRIM seams to reduce bulk, as shown below.



Cutting/Marking

BEFORE CUTTING:

PRESS pattern pieces with a warm dry iron. PRE-SHRINK fabric by pre-washing washables or steam-pressing non-washables.

CIRCLE your cutting layout.

PIN pattern to fabric as shown in Cutting Layouts.

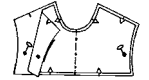
- FOR DOUBLE THICKNESS: Fold fabric with RIGHT sides together.
- FOR SINGLE THICKNESS: Place fabric RIGHT side up.
- FOR PILE, SHADED OR ONE WAY DESIGN FABRICS: Use "with nap" layouts

AFTER CUTTING:

Transfer markings to WRONG side of fabric before removing pattern. Use pin and chalk method or dressmaker's tracing paper and wheel.

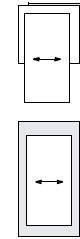
To Quick Mark:

- Snip edge of fabric to mark notches, ends of fold lines and center lines.
- Pin mark dots.

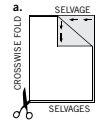


SPECIAL CUTTING NOTES

★ If layout shows a piece extending past fold, cut out all pieces except piece that extends.

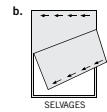


✳ Mark small arrows along both selvages indicating direction of nap or design. Fold fabric crosswise with RIGHT sides together, and cut along fold (a).

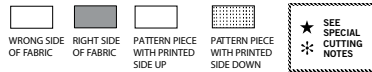


Open out fabric to single thickness. Cut extending piece on RIGHT side of fabric in position shown.

Turn one fabric layer around so arrows on both layers go in the same direction. Place RIGHT sides together (b).



Cutting Layouts

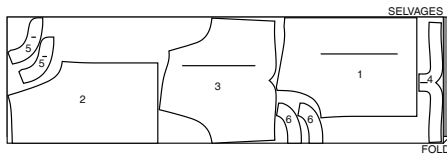


POSITION OF PATTERN PIECES MAY VARY SLIGHTLY ACCORDING TO YOUR PATTERN SIZE

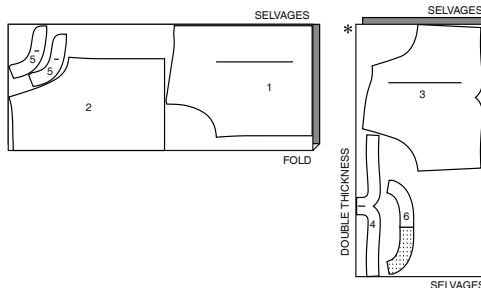
VIEW A

USE PIECES 1 2 3 4 5 6

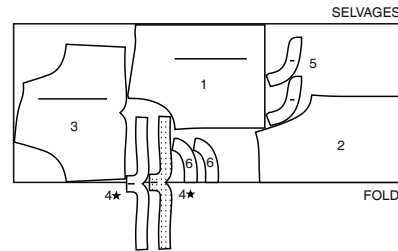
45" (115CM) WITH NAP
SIZES 8-10-12-14-16-18



45" (115CM) WITH NAP
SIZES 20-22-24-26



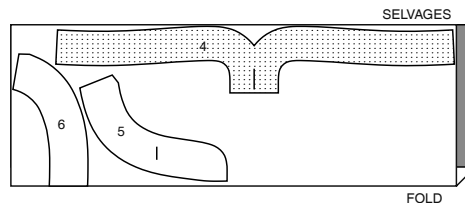
60" (150CM) WITH NAP
ALL SIZES



INTERFACING A

USE PIECES 4 5 6

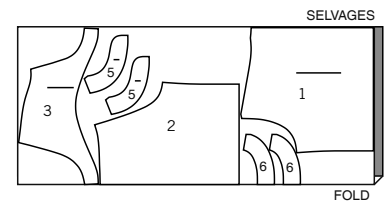
20" (51CM) ALL SIZES



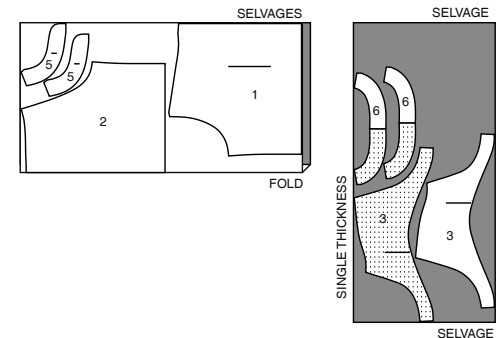
VIEW B

USE PIECES 1 2 3 5 6

45" (115CM) WITH NAP
SIZES 8 10 12 14 16 18

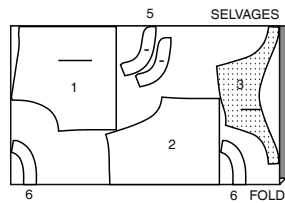


45" (115CM) WITH NAP
SIZES 20 22 24 26



CUTTING LAYOUTS CONTINUED ON PAGE 2

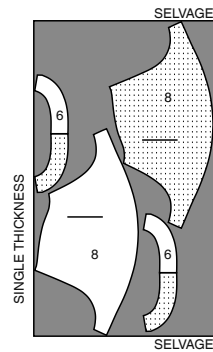
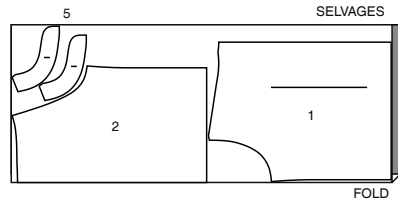
60" (150CM)
WITH NAP
ALL SIZES



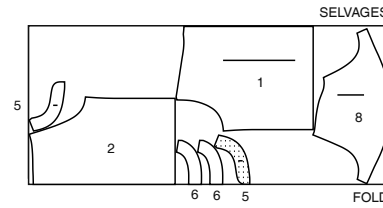
VIEW C

USE PIECES 1 2 5 6 8

45" (115CM) WITH NAP
ALL SIZES



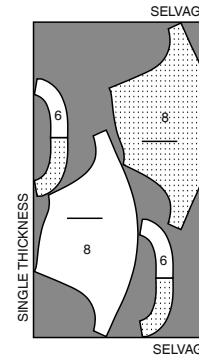
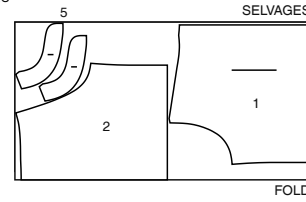
60" (150CM)
WITH NAP
ALL SIZES



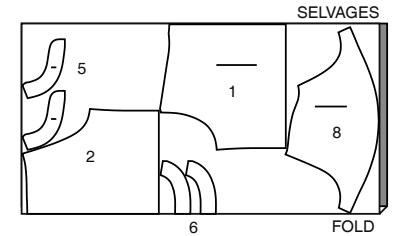
VIEW D

USE PIECES 1 2 5 6 8

45" (115CM) WITH NAP
ALL SIZES



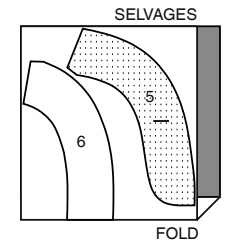
60" (150CM)
WITH NAP
ALL SIZES



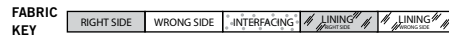
INTERFACING B,C,D

USE PIECES 5 6

20" (51CM)
ALL SIZES



Sewing Directions



Read **General Directions** on page 1 before you begin.

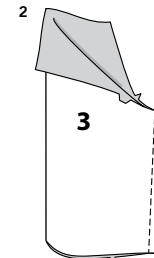
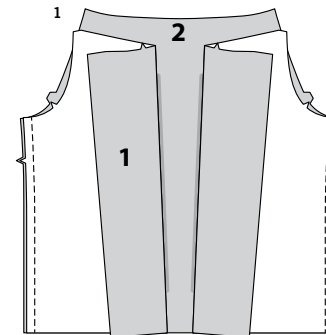
Sewing methods in **BOLD TYPE** have Sewing Tutorial Video available.
Scan QR CODE to watch videos:

- EASE/GATHER** - see [sewing two row gathers](#) video.
- NARROW HEM** - see [sewing narrow hems](#) video.
- EDGESTITCH** - see [how to edgestitch](#) video.
- STAYSTITCH** - see [how to do stay-stitching](#) video.
- STITCH IN THE DITCH** - see [how to stitch in the ditch](#) video.
- TOPSTITCH** - see [how to topstitch](#) video.
- UNDERSTITCH** - see [how to understitch](#) video.
- FINISH** - Stitch 1/4" (6mm) from raw edge and finish with one of the following: (1) Pink OR (2) Overcast OR (3) Turn in along stitching and stitch close to fold OR (4) Overlock.
- OPTIONAL FOR HEMS:** Apply Seam Binding.
- SLIPSTITCH** - see [how to slipstitch](#) video.

SEWING TUTORIALS



Build your skills viewing short, easy-to-follow videos at [simplicity.com/sewingtutorials](https://www.simplicity.com/sewingtutorials)



PATTERN PIECES WILL BE IDENTIFIED BY NUMBERS THE FIRST TIME THEY ARE USED.
STITCH SEAMS WITH RIGHT SIDES TOGETHER UNLESS OTHERWISE STATED.

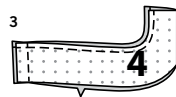
TOP A, B, C, D

FRONT, BACK AND SLEEVE

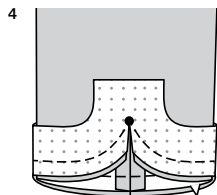
1. Stitch front (1) sections to back (2) at side seams.

FOR VIEWS A, B

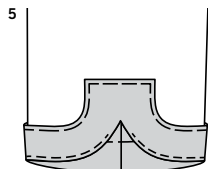
2. Stitch sleeve (3) seam.

**FOR VIEW A**

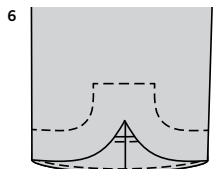
- 3.** Apply **INTERFACING** to sleeve facing (4). **FINISH** upper unnotched edges of sleeve facing. With **RIGHT** sides together, stitch ends of sleeve facing together, as shown.



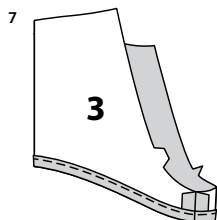
- 4.** With **RIGHT** sides together, pin sleeve facing to sleeve, matching seams, notches and small dots. Stitch lower edge, continuing along stitching line, pivoting at small dot. Clip to small dot, being careful not to cut through stitching. Clip curves. Trim seam. **UNDERSTITCH** facing as far as possible.



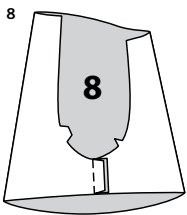
- 5.** Turn facing to **INSIDE**. Press. Baste close to finished edge.



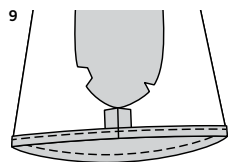
- 6.** On **OUTSIDE**, top-stitch as basted.

FOR VIEW B

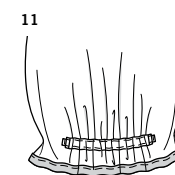
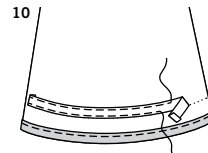
- 7.** Make **NARROW HEM** at lower edge of sleeve (3).

FOR VIEWS C, D

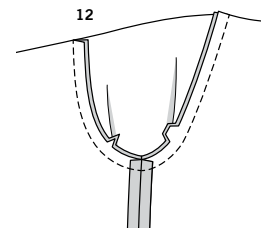
- 8.** Stitch sleeve (8) seam.



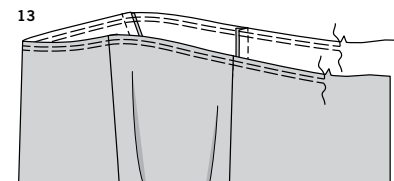
- 9.** Make **NARROW HEM** at lower edge of sleeve.

**FOR VIEW D**

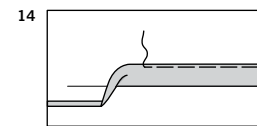
- 10.** On **INSIDE**, pin bias tape to sleeve, placing lower long edge along placement line, turning under 1/4" (6mm) on ends. Stitch close to upper and lower edges, forming casing.
- 11.** For each sleeve, cut a piece of elastic 4" (10.2cm) long. Insert elastic through casing, having ends even. Baste ends. Stitch close to ends of casing, catching elastic in stitching.

**CONTINUE AS FOLLOWS FOR ALL VIEWS**

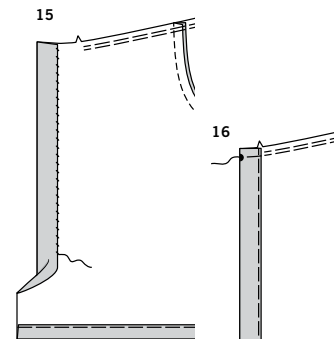
- 12.** With right sides together, pin sleeve to armhole edge, matching notches and seams. Stitch. Press seam toward sleeve.



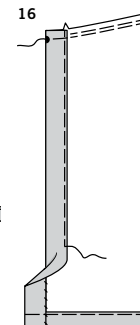
- 13.** **GATHER** upper edge between notches, as shown.

FINISHING

- 14.** Turn up hem on lower edge of top. Turn 1/4" (6mm) on raw edge of hem to wrong side; press. Baste close to inner edge of hem.



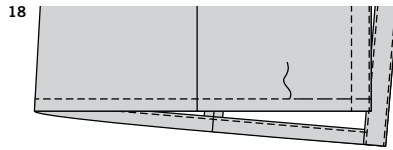
- 15.** Turn front edges to **INSIDE** along foldline for interfacing. Press. Sew in place invisibly close to raw edge.



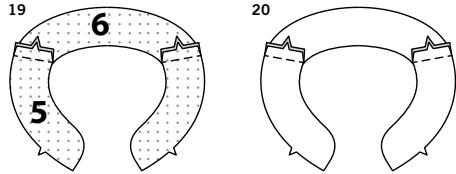
- 16.** For self facing, turn in again along foldline for facing. Press. Baste close to inner edge, as shown. Baste upper edges.



- 17.** On **OUTSIDE**, stitch front edges along inner basting, as shown. **EDGESTITCH** front edges.

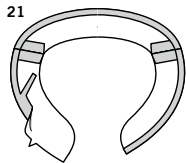


18. Stitch hem along basting, as shown, beginning and ending at self facing stitching.

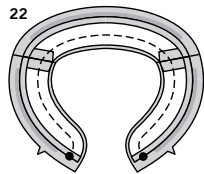


19. Apply **INTERFACING** to front neck band (5) and back neck band (6). Stitch interfaced front neck band sections to interfaced back neck band at shoulder edges.

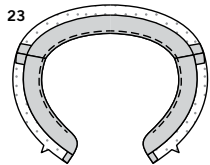
20. For facing, stitch uninterfaced front neck band sections to uninterfaced back neck band at shoulder edges.



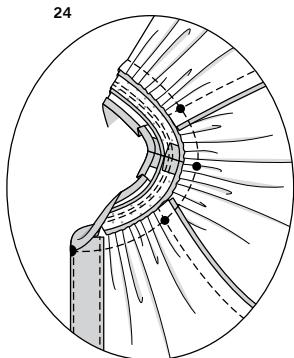
21. Press under seam allowance on lower edge of neck band facing, easing in fullness where necessary. Trim pressed seam allowance to 3/8" (1cm).



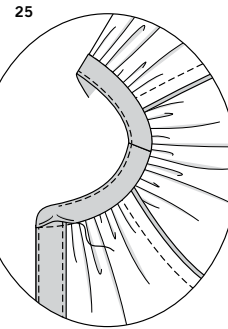
22. With **RIGHT** sides together, pin facing to neck band, matching large dots and seams. Stitch front and unnotched edge. Trim seam. **UNDERSTITCH** facing as far as possible.



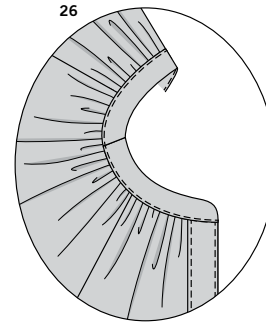
23. Turn **RIGHT** side out. Press.



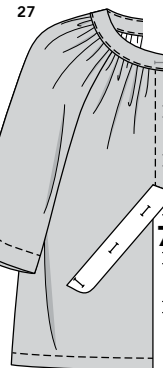
24. With **RIGHT** sides together, pin neck band to upper edge of top, keeping pressed edge free, placing small dots at sleeve seams and seam at small dot on sleeve. Adjust gathers; baste. Stitch. Trim seam. Press seam toward neck band.



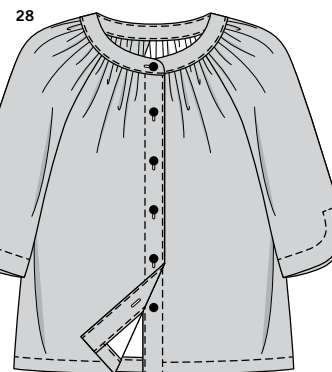
25. **SLIPSTITCH** pressed edge over seam.



26. **EDGESTITCH** lower edge of neck band.



27. Place **GUIDE FOR BUTTONHOLES** (7) on right front, having edges of tissue even with finished edges of shirt, as shown. Transfer markings. Make buttonholes at markings.



28. Lap opening edges, as shown, matching centers. Using buttonholes as guides, make button markings on left front. Sew buttons at markings.



Congrats!

You've completed your sewing adventure

SHARE YOUR LOOK



Post your pattern and tag us
@simplicity_creative_group and **#simplicitypatterns**
for a chance to be featured on our social media.

Look for more PDF patterns at **simplicity.com**

Have a question or need help with your sewing project call us at
1-888-588-2700

Simplicity
by design

Simplicity ©2023 a division of IG Design Group Americas Inc. • Atlanta, GA 30342 USA www.thedesigngroup.com • All Rights Reserved. www.simplicity.com • Made in the U.S.A. Fabriqué aux États-Unis.

To be used for individual private home use only and not for commercial or manufacturing purposes. • A usage privé seulement et non à des fins commerciales ou de production en série. • Para uso privado solamente, no se puede utilizar con propósitos de comercialización o de producción en serie.