



mig A DIY & LIFESTYLE BRAND

Use the 1 inch (2.54cm) box to ensure you are using rule at 100%
Utilisez la boîte de 2.54 cm pour vous assurer d'utiliser la règle à 100%.
Utilizar un cuadrado de 2.54 cm para asegurarse de estar usando la regla al 100%.

PICK-A-KNIT® RULE

FOR THIS PATTERN - 4" (10 cm) OF KNIT FABRIC MUST STRETCH CROSSWISE FROM HERE
POUR CE PATRON - LE JERSEY DOIT S'ÉTIRER DANS LA LAGEUR DE 4" (10 cm) DEPUIS ICI
PARA ESTE PATRON - LAS MALLAS DEBEN ESTIRARSE A LO ANCHO POR 4" (10 cm) DESDE AQUÍ

→

TO HERE 50%
JUSQUE LA 50%
HASTA ALLA 50%

→

When using the Pick-A-Knit® rule to measure your fabrics stretch capacity, rule must be viewed or printed at 100%.
Quand vous utilisez la règle Pick-A-Knit® pour mesurer la capacité d'élasticité des tissus, la règle doit être visible ou imprimée à 100%.
Al utilizar la regla Pick-A-Knit® para medir la capacidad de elasticidad de las telas, la regla debe estar visible o impresa al 100%.

Easy

MISSES' KNIT DRESS IN TWO LENGTHS

Suggested Fabrics: Stretch Knits only such as Bamboo, Interlock, ITY, Jacquard, Jersey, Rib Knit. See Pick-A-Knit® Rule.

Notions: A,B: 1½ yds. (1.3m) of 1¼" (3.2cm) elastic.

Sizes	8	10	12	14	16	18	20	22	24	26
European	34	36	38	40	42	44	46	48	50	52

BODY MEASUREMENTS: Select pattern size based on body measurements

Bust	31½	32½	34	36	38	40	42	44	46	48	Ins.
Waist	24	25	26½	28	30	32	34	37	39	41½	"
Hip-9" below waist	33½	34½	36	38	40	42	44	46	48	50	"
Back-neck to waist	15¾	16	16¼	16½	16¾	17	17¼	17½	17¾	17¾	"

Dress A	60**	1¼	1¼	1¼	1¾	1¾	1½	1½	1½	1½	Yds.
Dress B	60**	1¼	1¼	1¼	1¾	1¾	2	2½	2½	2¼	Yds.

FINISHED GARMENT MEASUREMENTS (Includes Design and Wearing Ease)

A,B Bust	30½	31½	33	35	37	39	41	43	45	47	Ins.
A,B Waist	28	29	30½	32½	34½	36½	38½	40½	42½	44½	"
A,B Hip	33½	34½	36	38	40	42	44	46	48	50	"
Width, lower edge											
Dress A	36½	37½	39	41	43	45	47	49	51	53	Ins.
Dress B	40	41	42½	44½	46½	48½	50½	52½	54½	56½	"
Finished back length from base of neck											
Dress A	33¾	34	34¼	34½	34¾	35	35¼	35½	35¾	36	Ins.
Dress B	49¾	50	50¼	50½	50¾	51	51¼	51½	51¾	52	"

*with nap **without nap

Facile

ROBE EN TRICOT EN DEUX LONGUEURS POUR JEUNES FEMMES

Tissus Conseillés: Seulement pour tricot extensibles tels que Tricot bambou, Interlock, Tricot interlock en fil retors, Tricot jacquard, Jersey, Tricot à côtes. Voyez la Règle-Pour-Choisir-Un-Tricot®.

Mercerie: A,B: 1.3m d'élastique de 3.2cm.

Tailles	8	10	12	14	16	18	20	22	24	26
Françaises	36	38	40	42	44	46	48	50	52	54
Européen	34	36	38	40	42	44	46	48	50	52

MESURES DU CORPS: Choisissez la taille du patron basée sur les mesures du corps

Poitrine	80	83	87	92	97	102	107	112	117	122	cm
Taille	61	64	67	71	76	81	87	94	99	106	"
Hanches (23cm au-dessous de la taille)	85	88	92	97	102	107	112	117	122	127	cm
Dos du cou à la taille	40	40.5	41.5	42	42.5	43	44	44	44.5	44.5	"

Robe A	150cm*	1.2	1.2	1.2	1.2	1.3	1.4	1.4	1.4	1.4	m
Robe B	150cm*	1.6	1.6	1.6	1.6	1.6	1.9	1.9	2.0	2.1	m

MESURES DES VÊTEMENTS FINI (Motif et aisance de port compris)

A,B Poitrine	77	80	84	89	94	99	104	109	114	119	cm
A,B Taille	71	74	77	83	88	93	98	103	108	113	"
A,B Hanches	85	88	91	97	102	107	112	117	122	127	"
Largeur à l'ourlet											
Robe A	93	95	99	104	109	114	119	124	130	135	cm
Robe B	102	104	108	113	118	123	128	133	138	144	"
Longueur finie – dos, votre nuque à l'ourlet											
Robe A	86	86	87	88	88	89	90	90	91	91	cm
Robe B	126	127	128	128	129	130	130	131	131	132	"

*avec sens **sans sens



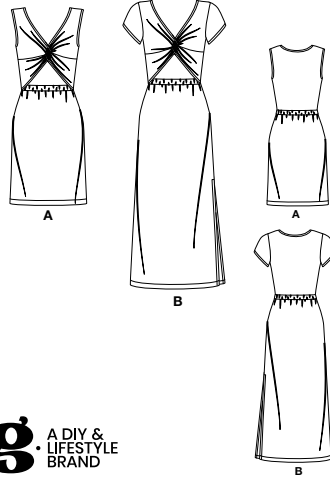
A



B

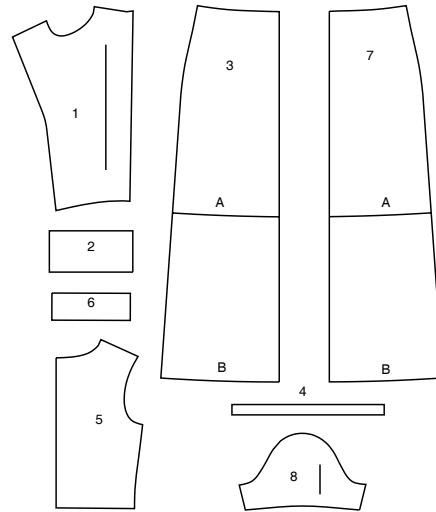
Simplicity®

Thank you for purchasing this Simplicity pattern.
We made every effort to provide you with a high quality product.



miG A DIY & LIFESTYLE BRAND

8 PIECES



- 1 BODICE FRONT - A,B
2 FRONT CASING - A,B
3 SKIRT FRONT - A,B
4 ELASTIC GUIDE FOR CASING - A,B
5 BODICE BACK - A,B
6 BACK CASING - A,B
7 SKIRT BACK - A,B
8 SLEEVE - B



www.simplicity.com



info@simplicity.com



1-888-588-2700

General Directions

The Pattern

- SYMBOLS**
- GRAIN LINE: Place on straight grain of fabric parallel to selvage
 - PLACE SOLID LINE on fold of fabric.
 - CENTER FRONT OR BACK OF garment.
 - NOTCHES
 - DOTS
 - CUTTING LINE
 - LENGTHEN OR SHORTEN LINES

SEAM ALLOWANCE: 5/8" (1.5cm) unless otherwise stated is included but not printed on MULTI-SIZE PATTERNS. Mark your size with colored felt tip pen. See chart on tissue for how to use MULTI-SIZE PATTERNS.

ADJUST IF NEEDED
Make adjustments before placing pattern on fabric.

TO LENGTHEN:
Cut pattern between lengthen or shorten lines. Spread pattern evenly, the amount needed and tape to paper.

TO SHORTEN:
At lengthen or shorten lines, make an even pleat taking up amount needed. Tape in place.

When lengthen or shorten lines are not given, make adjustments at lower edge of pattern.

Sewing

- SEW garment following **Sewing Directions**.
- PIN or machine-baste seams matching notches.
- STITCH 5/8" (1.5 cm) seams unless otherwise stated.
- PRESS seams open unless otherwise indicated clipping when necessary so seams will lie flat.
- TRIM seams to reduce bulk, as shown below.



Trim enclosed seams into layers



Trim corners



Clip inner curves



Notch outer curves

Cutting/Marking

BEFORE CUTTING:

PRESS pattern pieces with a warm dry iron. PRE-SHRINK fabric by pre-washing washables or steam-pressing non-washables.

CIRCLE your cutting layout.

PIN pattern to fabric as shown in Cutting Layouts.

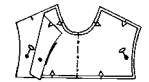
- FOR DOUBLE THICKNESS: Fold fabric with RIGHT sides together.
- FOR SINGLE THICKNESS: Place fabric RIGHT side up.
- FOR PILE, SHADED OR ONE WAY DESIGN FABRICS: Use "with nap" layouts

AFTER CUTTING:

Transfer markings to WRONG side of fabric before removing pattern. Use pin and chalk method or dressmaker's tracing paper and wheel.

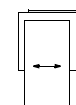
To Quick Mark:

- Snip edge of fabric to mark notches, ends of fold lines and center lines.
- Pin mark dots.



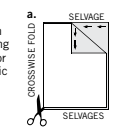
SPECIAL CUTTING NOTES

★ If layout shows a piece extending past fold, cut out all pieces except piece that extends.

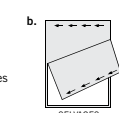


Open out fabric to single thickness. Cut extending piece on RIGHT side of fabric in position shown.

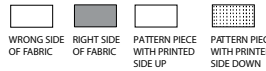
✱ Mark small arrows along both selvages indicating direction of nap or design. Fold fabric crosswise with RIGHT sides together, and cut along fold (a).



Turn one fabric layer around so arrows on both layers go in the same direction. Place RIGHT sides together (b).



Cutting Layouts



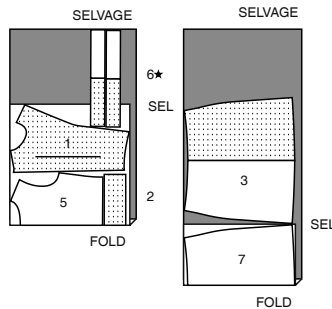
POSITION OF PATTERN PIECES MAY VARY SLIGHTLY ACCORDING TO YOUR PATTERN SIZE

A,B: SIZED FOR STRETCH KNITS ONLY
A,B: PIECE 4 CUT OF ELASTIC

DRESS A

USE PIECES 1 2 3 5 6 7

60" (150CM)
WITH NAP
SIZES 8 10 12 14 16

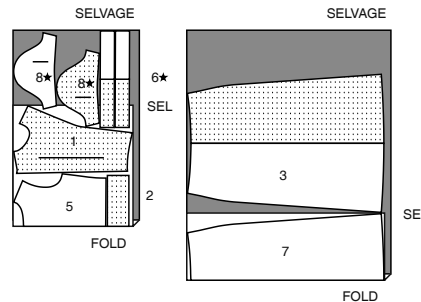


60" (150CM)
WITH NAP
SIZES 18 20 22 24 26

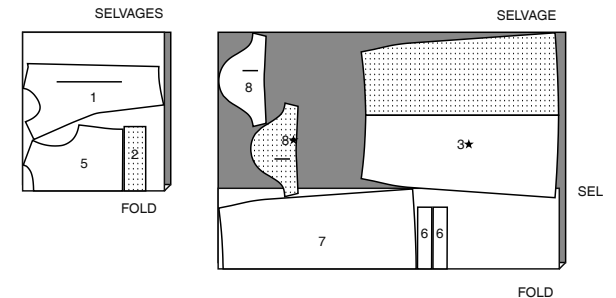
DRESS B

USE PIECES 1 2 3 5 6 7 8

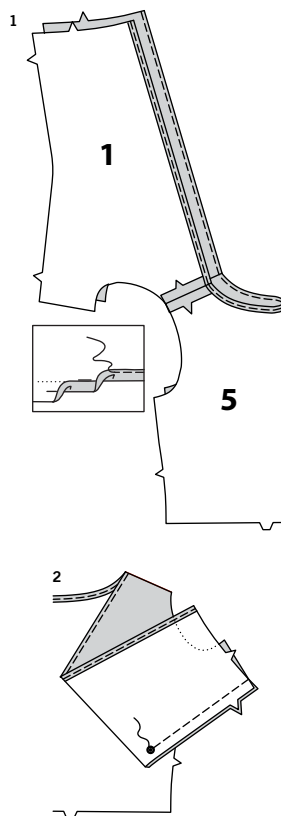
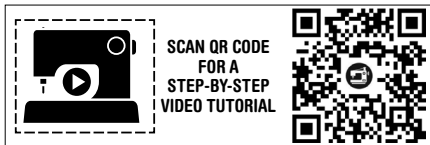
60" (150CM)
WITH NAP
SIZES 8 10 12 14 16



60" (150CM)
WITH NAP
SIZES 18 20 22 24 26



Congratulations on purchasing a Mimi G for Simplicity Sew Along Pattern. Please scan the QR code below to link to the Sew Along video for this pattern, hosted by Mimi G. This video features step by step instructions and helpful pattern insight. Enjoy!



Sewing Directions

FABRIC KEY RIGHT SIDE WRONG SIDE INTERFACING LINING LINING

Read **General Directions** on page 1 before you begin.

SIMPLY THE BEST SEWING TECHNIQUES...

FOR KNITS

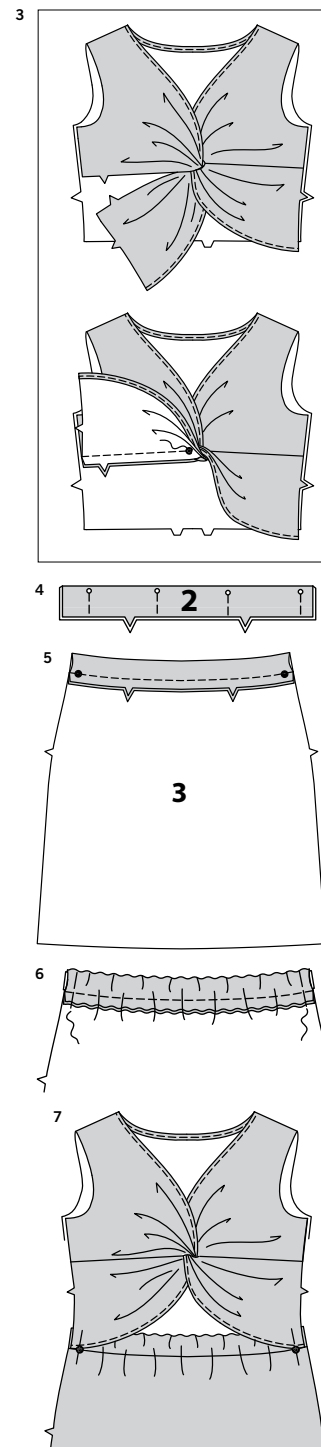
- Use a ball point or stretch needle.
- Stretch knits need seams that are supple enough to “give” with the fabric. You can sew them with straight stitches (stretching the fabric slightly as you sew), narrow zig-zag stitches or one of the stretch stitches built into many conventional machines, or on your serger.
- Some knits require very little or no pressing while sewing. Use the appropriate temperature setting. Press lightly or use steam.
- To prevent shoulder seams from stretching, pin center of hem tape, clear elastic or twill tape along seam line on front shoulder edges, then stitch the shoulder seams.
- Hems can be stitched in place 1/4" (6mm) from raw edge for 1-1/4" (3.2cm) hem allowances.
- Raw edges of hem and facings are left raw, unless using a serger.

PATTERN PIECES WILL BE IDENTIFIED BY NUMBERS THE FIRST TIME THEY ARE USED.

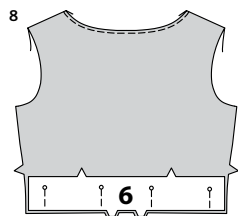
STITCH SEAMS WITH RIGHT SIDES TOGETHER UNLESS OTHERWISE STATED.

DRESS A, B

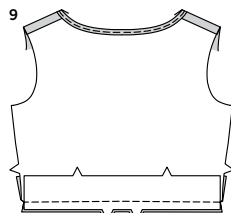
1. Stitch bodice front (1) sections to bodice back (5) at shoulder seams.
To make a narrow hem on front and neck edges, press under 5/8" (1.5cm) hem allowance. To form narrow hem, tuck under raw edge to meet crease. Press. Stitch hem in place.
2. To make opening in LEFT front bodice, fold along center front, bringing inner raw edges together, matching notches and large dots.
Stitch inner raw edges together to large dot, back-stitching at large dot to reinforce seam.



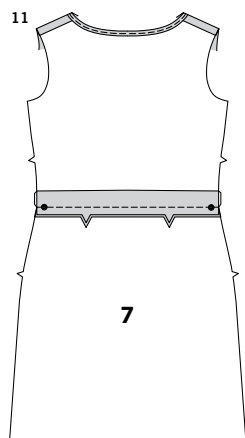
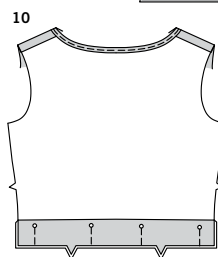
3. With RIGHT sides facing up towards you, insert extended RIGHT front edge through opening in LEFT front. Fold along center front, bringing inner raw edges together, matching notches and large dots.
Stitch inner raw edges together to large dot, back-stitching at large dot.
4. Fold front casing (2) in half along foldline, WRONG sides together. Pin long raw edges together.
5. Stitch front casing to upper edge of skirt front (3), matching centers and large dots. Stitch.
Turn seam toward skirt.
6. Cut two pieces of elastic, each the length of elastic guide for casing (4).
Insert one elastic through opening in casing, having raw edges even. Stitch across ends a scant 5/8" (1.5cm) from raw edges, catching in elastic.
Distribute fullness evenly.
Set aside remaining elastic for back casing.
7. With RIGHT sides facing up, lap side edges of bodice front over side edge of skirt front, matching large dots; baste raw edges together.



- 8.** With RIGHT sides together, pin one back casing (6) section to bodice back, matching centers and double notches.

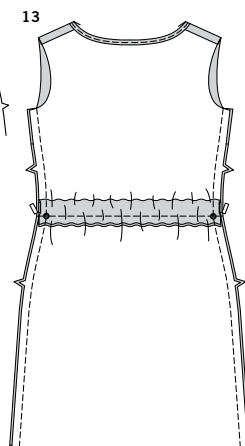
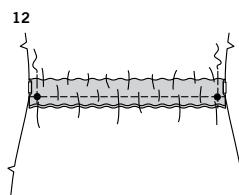


- 9.** With RIGHT sides together, pin remaining back casing to attached back casing (sandwiching bodice back), matching centers and double notches. Stitch.



- 10.** Turn casing sections away from bodice back. With WRONG sides together and raw edges even, pin lower edges of casing sections together.

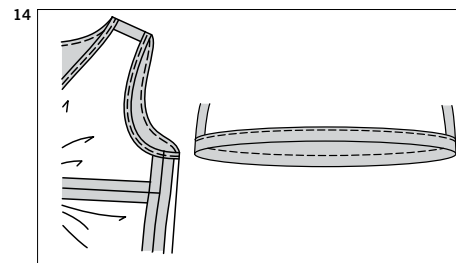
- 11.** Stitch back casing to upper edge of skirt back (7), matching centers and large dots. Turn seam toward skirt.



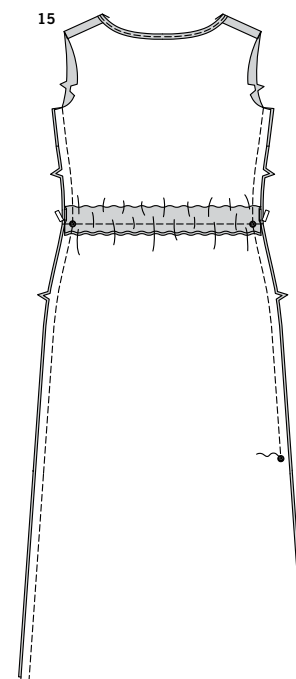
- 12.** Insert remaining elastic through opening in casing, having raw edges even. Stitch across ends a scant 5/8" (1.5cm) from raw edges, catching in elastic. Distribute fullness evenly.

CONTINUE AS FOLLOWS FOR DRESS A

- 13.** Pin dress back to front at side seams, matching upper edges of casing and large dots. Stitch. Pull out ends of elastic and trim.

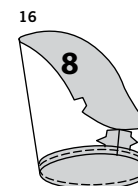


- 14.** Make a **NARROW HEM** on armhole edges same as for front and neck. Press up hem on lower edge of skirt. Stitch OR zig-zag 1/4" (6mm) from raw edge.

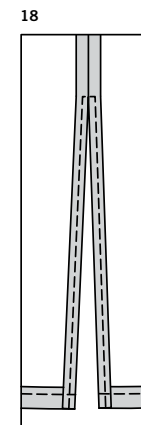
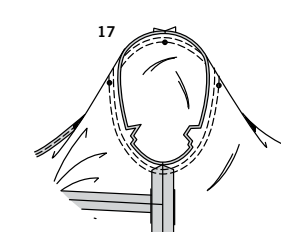


CONTINUE AS FOLLOWS FOR DRESS B

- 15.** Pin dress back to front at side seams, matching upper edges of casing and large dots. Stitch RIGHT side seam. Stitch LEFT side seam above lower large dot, back-stitching at lower large dot to reinforce seam. Pull out ends of elastic and trim.



- 16.** Stitch underarm seam of sleeve (8). Make a narrow hem lower edge of sleeve same as for front and neck.



- 17.** Turn sleeve RIGHT side out. Hold dress WRONG side out with armhole toward you. With RIGHT sides together, pin sleeve to armhole edge with center small dot at shoulder seam, matching underarm seams, notches and remaining small dots. Baste, easing in sleeve to fit. Stitch. Stitch again 1/8" (3mm) from first stitching. Trim seam below notches close to stitching. Press only the seam allowance, shrinking out fullness.

- 18.** Press up hem on lower edge of skirt. Stitch OR zig-zag 1/4" (6mm) from raw edge. Press under 5/8" (1.5cm) on slit opening edges; stitch, squaring stitching above opening.



Congrats!

You've completed your sewing adventure

SHARE YOUR LOOK



Post your pattern and tag us
@simplicity_creative_group and **#simplicitypatterns**
for a chance to be featured on our social media.

Look for more PDF patterns at **simplicity.com**

Have a question or need help with your sewing project call us at
1-888-588-2700



Simplicity ©2023 a division of IG Design Group Americas Inc. • Atlanta, GA 30342 USA www.thedesigngroup.com • All Rights Reserved. www.simplicity.com • Made in the U.S.A. Fabriqué aux États-Unis.

To be used for individual private home use only and not for commercial or manufacturing purposes. • A usage privé seulement et non à des fins commerciales ou de production en série. • Para uso privado solamente, no se puede utilizar con propósitos de comercialización o de producción en serie.